

**MISSION DATA CARD**

OPORD		Callsign		Mission		Date/Time		
3850/2025		Panther 7		Training		052000MAY25		
Task	Formation, A2A Refuel					Freq		
AO						261.15		
Departure				Recovery				
CAT				Tacan RWY 21				
#	Callsign		Pilot		IFF	TCN	LSR	NET
-1	Panther 7-1		Prinz		1011	1Y	1551	01/01

**LOADOUT**

A/A	2xA9X				GUN	100% HEI-T	
A/G					CHF	50	
POD					FLR	70	
TKS	3xFPU-8A				FUEL	100%	

**TOLD**

	Takeoff	Target	Joker	Bingo	Land
FUEL	17535				

**AIRBASES**

	Name	TCN	ATIS	GND	TWR	RWY	Elev	ILS
Dep	CVN-71 USS Theodore Roosevelt	71X		ICLS 7	304.0			
Arr	Rovaniemi	14X	282.8	282.5	250.55	21	643	111.7
Div	CVN-71 USS Theodore Roosevelt	71X		ICLS 7	304.0			

**FLIGHTPLAN**

#	Name	Navaid/Coords/DME	ALT	TOT
1	ORTEN	N70 00.140 E014 59.450		
2	LURAP	N69 05.560 E018 15.890		
3	SEPJA	N67 27.300 E021 12.080		
4	ROTKO		15000	
5	OSLIT	N66 51.750 E025 24.383	15000	

**COMMS**

Radio	Usage
1	CV(12), Heimdall(16), Shell-1(11), Heimdall(16), CV(12)

**SUPPORT****Tanker**

Callsign	TCN	Freq	ALT	TAS
SHELL 1	41Y	360.8		
Pos				

## OTHER FLIGHTS

Callsign	Mission	Airframe	Freq	TCN	Grpld	Laser
Raptor 1	Training	4x F-16C	134.0	1/64		162X
AO		Task				
Raptor 2	Training	4x F-16C	134.25	2/65		162X
AO		Task				
Monster 1	Training	4x A-10C	132.15	1/64	21	161X
AO	CAS Range ESR04	Task				
T-Rex 1	Training	4x A-10C	132.25	1/64	20	162X
AO	CAS Range ESR04	Task				
Tiger 1	Training	4x F/A-18C	261.15	1/64	1	155X
AO		Task	Formation, A2A Refuel			
Nazgul 6	Training	3x F-15E	262.45	1/64		156X
AO		Task				
Edelweiss 2	Training	2x F/A-18C	264.25	1/64		172X
AO		Task				
Edelweiss 3	Training	2x F/A-18C	264.15	1/64	1	171X
AO	AG Range R93A	Task	SLAM Attack			
Warrior	Training	1x Ground	264.05	1/64		170X
AO	ESR04	Task	JTAC ESR04			
Rattler 1	Training	4x AH-64D	133.5	1/64		125X
AO		Task				
Tusk 1	Training	4x A-10C	132.35	1/64	26	163X
AO	CAS Range ESR04	Task				

## RADIO CHANNELS

#	Freq	Name
1		Flight/Squadron specific
2	282.8	Rovaniemi ATIS
3	282.5	Rovaniemi Ground
4	250.55	Rovaniemi Tower
5	320.7	Bodo ATIS
6	250.75	Bodo Tower
7	235.45	Kallax ATIS
8	250.3	Kallax Tower
9	265.0	Texaco-1   KC-135   Medium / Slow   71Y
10	319.8	Arco-1   KC-135   High / Fast   22Y
11	360.8	Shell-1   KC-135 MPRS   High / Fast   41Y
12	304.0	CVN-71 Rough Rider (RRR)   71X
13	303.0	LHA-1 Tarawa (TWA)   79X
14	247.8	S-3B Mauler-1 (MAU)  64Y
15	347.8	Loki (E-2D)
16	348.7	Heimdall (E-3A)
17	242.17	ESR02 - CAS Range Operator
18	34.7	ESR02 - JTAC Odin
19	270.5	Blue
20	270.75	Red

**RAMROD**

0	1	2	3	4	5	6	7	8	9
W	A	N	D	E	R	L	U	S	T

**KTC 1400 C**

	0	1	2	3	4	5	6	7	8	9
A	JXSD	YGQ	ARM	TL	VC	UOE	WH	NP	FB	IK
B	TEBN	LGK	RHC	PW	SU	AOM	VQ	JI	FD	YX
C	IOMN	DPT	FCY	JH	GB	SWR	EU	KX	AQ	VL
D	PIYX	WHF	SVL	BR	DJ	NEA	OK	QM	UC	TG
E	YMTE	NKP	UAD	JB	QV	RCX	HW	OG	SL	FI
F	UPNL	AYO	GMI	BD	JW	RKQ	VC	TX	FE	HS
G	XKDY	WJT	CHP	FU	LQ	BSN	GI	AM	EV	RO
H	YTFX	LRB	SVO	PU	HQ	WND	MA	GJ	IC	KE
I	RKTO	DIF	LHC	MU	ES	WGA	BQ	YN	PX	VJ
J	LGAK	IDY	FNQ	EO	JT	WSP	UX	CH	RV	BM
K	CARG	POB	WNJ	SX	HM	TVY	QF	EK	IU	DL
L	JEGL	QVR	DOF	YN	KI	MAC	UB	PH	WS	TX
M	ESoy	QNT	CWM	BI	JG	UPK	FX	HA	LD	VR
N	BFTE	YKX	ONC	DR	QU	WMH	JV	IG	SP	AL
O	BWET	MOJ	UQX	IV	FL	HSG	DP	YN	KR	AC
P	UYCD	AHM	LGQ	VS	IE	BKO	TR	XN	JW	FP
Q	TOUK	SMW	RQX	VE	AI	LBY	HP	NG	FJ	CD
R	BXSF	KUD	TMA	OL	RH	PGQ	IY	EV	WN	JC
S	MIVX	LQA	BEN	TK	YD	WGC	JS	RH	PO	FU
T	UXCF	TNM	LYW	AH	EP	RID	JQ	VG	OS	BK
U	PJWX	GVO	TIA	SD	LK	CRY	UB	MQ	FH	NE
V	IGDO	UHA	CLE	RF	PV	JNS	TM	BW	QK	YX
W	FEAS	LVI	QBY	XC	WJ	DOP	MR	NU	HG	TK
X	TJCV	MDS	RWN	AB	QY	UFX	HK	IP	EL	OG
Y	QFAG	EJT	NIC	RW	XU	MYK	VH	SD	BP	LO

**NAVAIDS**

Id	Name	Channel	Position	Elevation
BOO	Bodo	45	N67 15.838 E014 20.046	43
BNK	Banak	47	N70 03.937 E024 58.181	17
OYA	Andoya	28	N69 17.175 E016 08.658	19



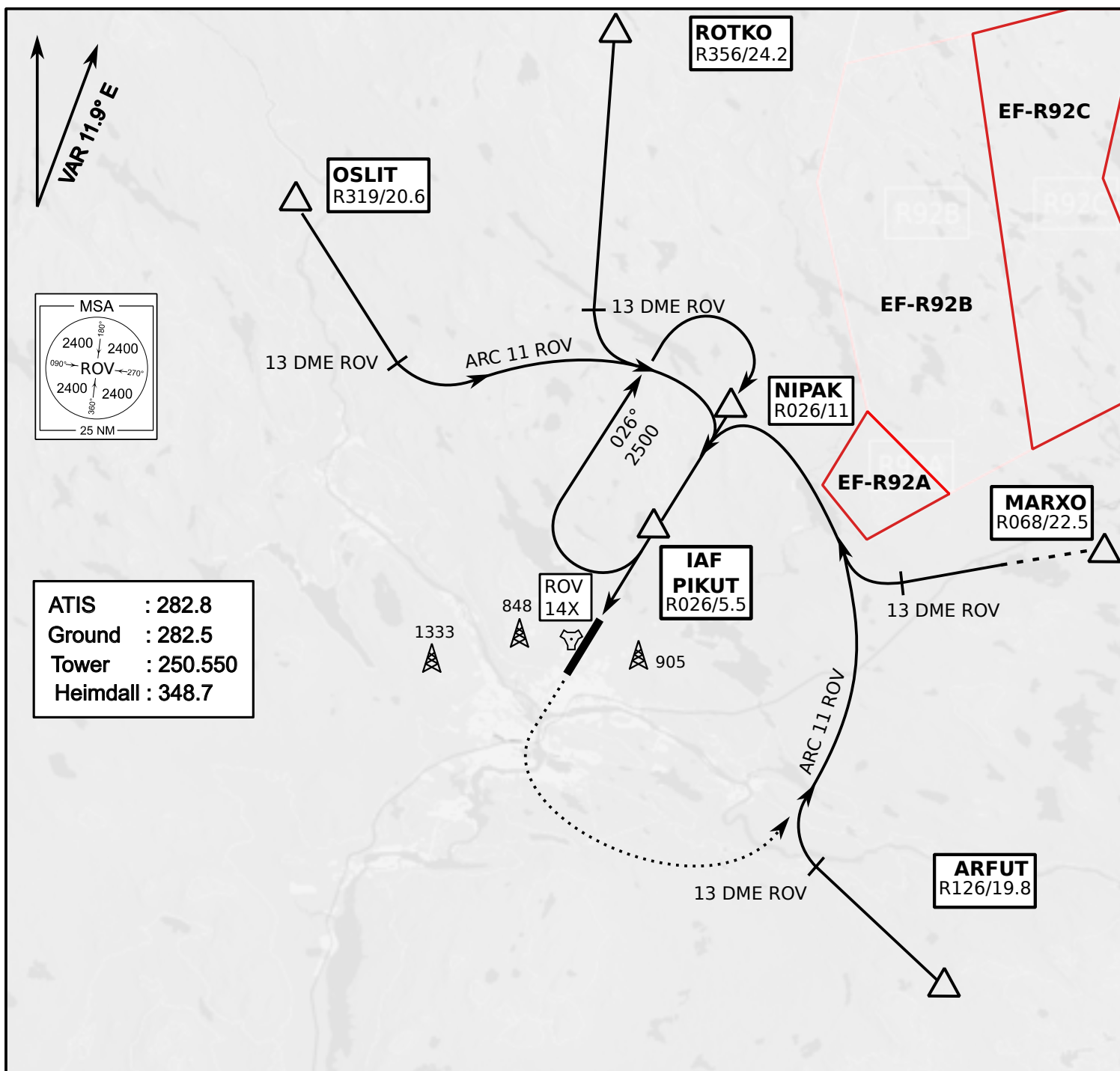




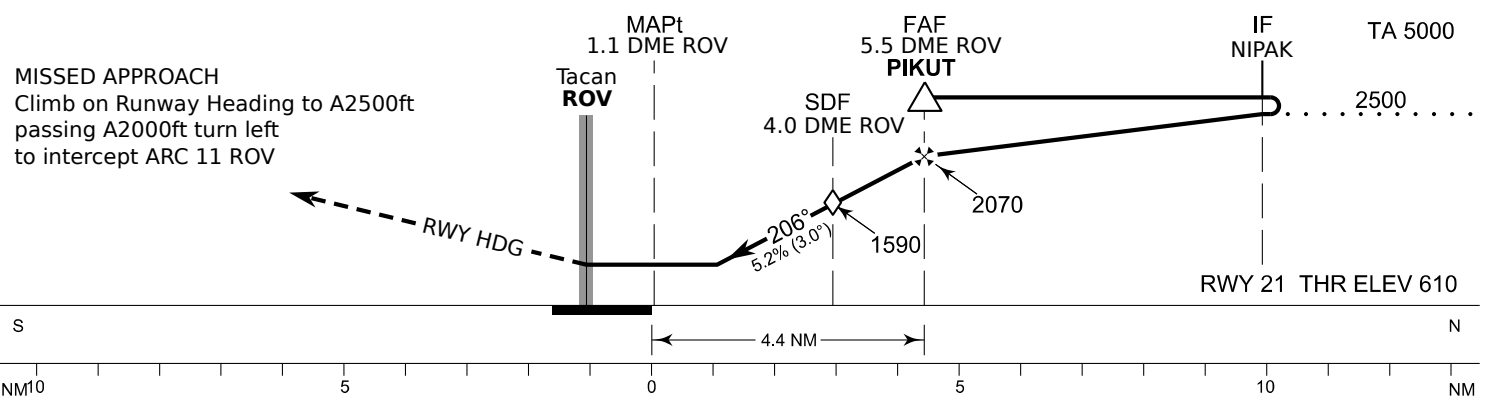
INSTRUMENT  
APPROACH CHART

ELEV 643ft  
HEIGHTS RELATED TO  
THR RWY21 ELEV 610ft

Tacan RWY 21  
ROVANIEMI AERODROME  
ROVANIEMI, FINLAND



**ATIS : 282.8**  
**Ground : 282.5**  
**Tower : 250.550**  
**Heimdall : 348.7**

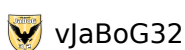


OCA (H)	A	B	C	D
Tacan	1010 (400)			
Tacan WO SDF	1590 (980)			
Circling	1120 (470)	1150 (510)	1300 (660)	1340 (690)

Final Approach DIST	3.0 DME	4.0 DME	5.0 DME			
Altitude (Height)	1280 (670)	1590 (980)	1910 (1300)			
	kt	90	100	120	140	160
FAF - MAPt 4.4 NM	min:sec	2:56	2:38	2:12	1:53	1:39
Rate of descent	ft/min	480	530	640	740	850

Timing not authorized for defining the MAPt

01.12.2024



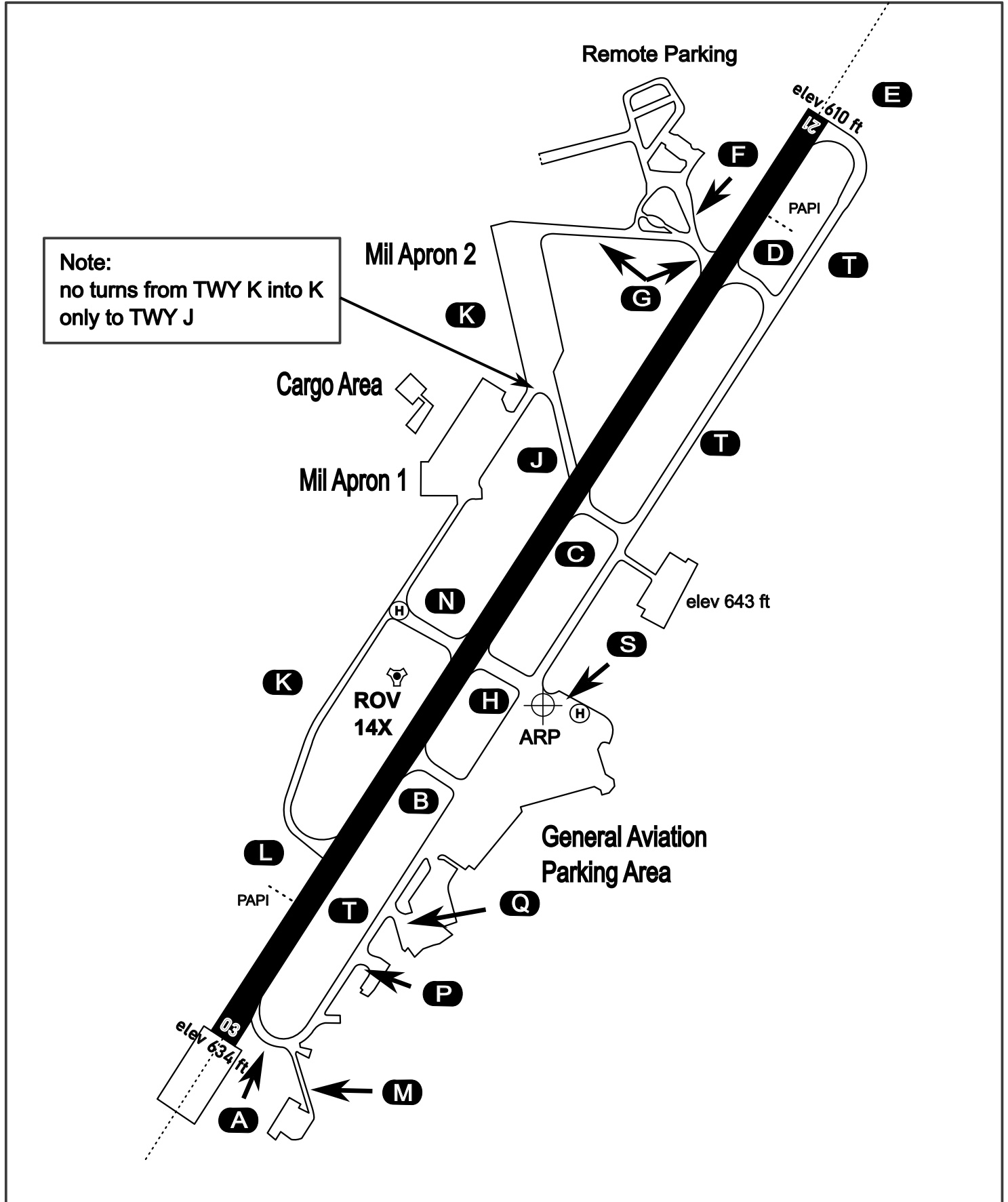
# AERODROME CHART

Rovaniemi Aerodrome

ARP N66° 33' 42" E025° 49' 51"

elev 643 ft

## ROVANIEMI, FINLAND



ATIS	Ground	Tower	Radar
282.800	282.500	250.550	348.700

