

MISSION DATA CARD

OPORD		Callsign		Mission		Date/Time	
3830/2025		Rattler 1		Training		282000APR25	
Task	Coop-Attack					Freq	
AO	R92D					133.5	
Departure				Recovery			
VFR Helicopter				VFR Helicopter			
#	Callsign	Pilot		IFF	TCN	LSR	NET
-1	Rattler 1-1	Hudson		4661	1Y	1251	
-2	Rattler 1-2	Remotex		4662	64Y	1252	
-3	Rattler 1-3	Laud		4663	64X	1253	
-4	Rattler 1-4	Warblade		4664	1X	1254	

LOADOUT

A/A		GUN	25% HEDP
A/G	4xAGM114L, 12xAGM114K	CHF	30
POD		FLR	60
TKS		FUEL	100%

TOLD

	Takeoff	Target	Joker	Bingo	Land
FUEL	2513				

AIRBASES

	Name	TCN	ATIS	GND	TWR	RWY	Elev	ILS
Dep	Rovaniemi	14X	282.8	282.5	250.55	21	643	111.7
Arr	Rovaniemi	14X	282.8	282.5	250.55	21	643	111.7

FLIGHTPLAN

#	Name	Navaid/Coords/DME	ALT	TOT
1	VIKA	N66 37.474 E026 13.557		
2	R92A.FARP.KI MI	N66 37.800 E026 22.717		
3	Entry S	N66 42.454 E026 40.184		
4	WP1	N66 46.021 E027		
5	WP2	N66 50.261 E027		
6	WP3	N66 54.169 E026 54.331		

COMMS

Radio	Usage
1	133.50
2	250.550
3	35.35

OTHER FLIGHTS

Callsign	Mission	Airframe	Freq	TCN	Grpld	Laser
Monster 1	Training	2x A-10C	132.15	1/64	21	161X
AO	ESR04	Task	CAS			
T-Rex 2	Training	2x A-10C	132.25	1/64	25	165X
AO	ESR04	Task	CAS			
Warrior	Training	1x Ground	32.0	1/64		170X
AO	ESR04	Task	JTAC			
Tusk 1	Training	1x A-10C	132.35	1/64	26	143X
AO	ESR04	Task	CAS			

RADIO CHANNELS

#	Freq	Name
1		Flight/Squadron specific
2	282.8	Rovaniemi ATIS
3	282.5	Rovaniemi Ground
4	250.55	Rovaniemi Tower
5	320.7	Bodo ATIS
6	250.75	Bodo Tower
7	235.45	Kallax ATIS
8	250.3	Kallax Tower
9	265.0	Texaco-1 KC-135 Medium / Slow 71Y
10	319.8	Arco-1 KC-135 High / Fast 22Y
11	360.8	Shell-1 KC-135 MPRS High / Fast 41Y
12	304.0	CVN-71 Rough Rider (RRR) 71X
13	303.0	LHA-1 Tarawa (TWA) 79X
14	247.8	S-3B Mauler-1 (MAU) 64Y
15	347.8	Loki (E-2D)
16	348.7	Heimdall (E-3A)
17	242.17	ESR02 - CAS Range Operator
18	34.7	ESR02 - JTAC Odin
19	270.5	Blue
20	270.75	Red

RAMROD

0	1	2	3	4	5	6	7	8	9
C	O	N	J	U	G	A	T	E	D

KTC 1400 C

	0	1	2	3	4	5	6	7	8	9
A	CVGN	ULE	RMA	IK	QD	TJW	BY	PO	SH	XF
B	IBGH	EFL	MAT	PD	YR	QVU	CJ	WX	SN	KO
C	DXOY	VHF	KJL	CQ	AB	MGR	PT	IN	EU	WS
D	FYDM	AXU	EBI	LW	GN	KJO	VP	CH	QS	RT
E	SAKC	LPH	VRX	JW	YD	UIG	OM	TN	EQ	BF
F	TMHK	CPL	GBD	JF	SR	WNE	AV	XI	QU	OY
G	XGWY	SKI	PCJ	BH	EN	ULR	QD	VA	OT	MF
H	RPQB	KSH	EVN	YA	TU	FXG	CJ	OD	LW	MI
I	LGFB	OJM	AKQ	TX	HP	CEN	YI	VS	UR	WD
J	NPIA	EDG	OQB	CR	LX	THJ	MU	FW	YK	VS
K	LUAK	EDN	VYR	OP	GQ	TMJ	CH	BI	SX	FW
L	QCFI	YJE	VSD	TP	OL	ANF	BG	WK	XH	UR
M	TBYL	KDN	JVO	MU	GR	HSI	EW	XC	AQ	FP
N	CVER	YIA	HFQ	TJ	MP	WDO	KS	XU	BL	GN
O	MQDS	JCE	LKT	WU	BF	NOA	HV	IP	GR	YX
P	YXUO	IJC	TFE	RG	PA	BMS	KN	WL	VH	QD
Q	TSDC	BWR	NGH	LI	AJ	FVK	MY	PO	EX	QU
R	VRAE	TSJ	KQI	YL	MC	NOG	DU	PX	HB	WF
S	YVPJ	CEF	RDO	LT	WU	AGN	IB	QH	SM	KX
T	QWGL	DXE	FOJ	AR	CI	HBY	SU	NM	TV	KP
U	AKVN	DUF	PBS	OM	WG	CQT	JE	IL	YR	HX
V	OCUV	BAE	FSP	WY	XR	NIM	TH	QD	KJ	LG
W	DJKH	SEA	NMY	BF	TR	UIQ	OX	WP	VG	LC
X	VMYF	WSP	ULD	XT	RE	CNG	KB	JO	AH	QI
Y	EJCY	VFN	TLP	BR	AS	GUX	HI	DQ	WO	KM

NAVAIDS

Id	Name	Channel	Position	Elevation
BOO	Bodo	45	N67 15.838 E014 20.046	43
BNK	Banak	47	N70 03.937 E024 58.181	17
OYA	Andoya	28	N69 17.175 E016 08.658	19

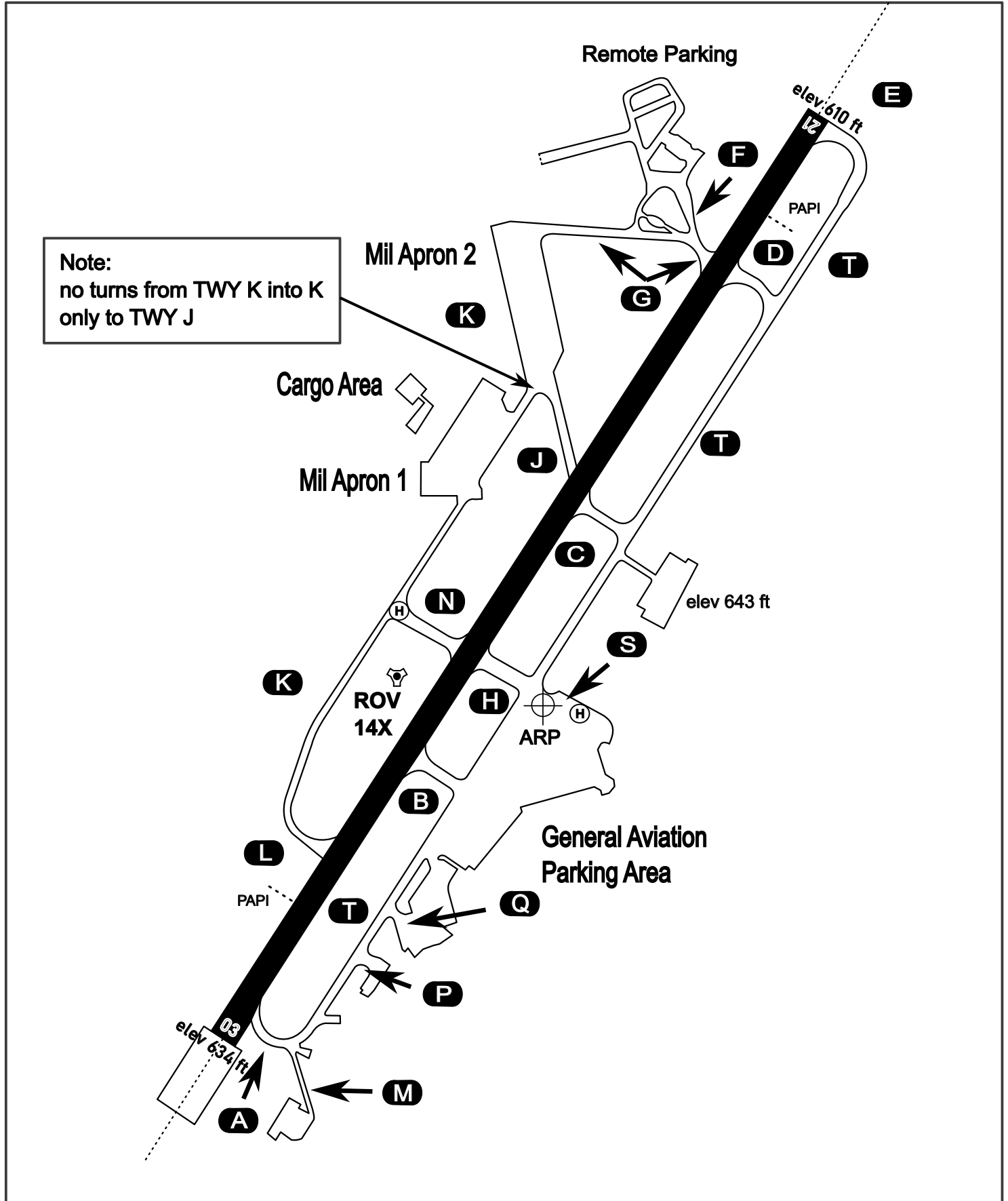
AERODROME CHART

Rovaniemi Aerodrome

ARP N66° 33' 42" E025° 49' 51"

elev 643 ft

ROVANIEMI, FINLAND

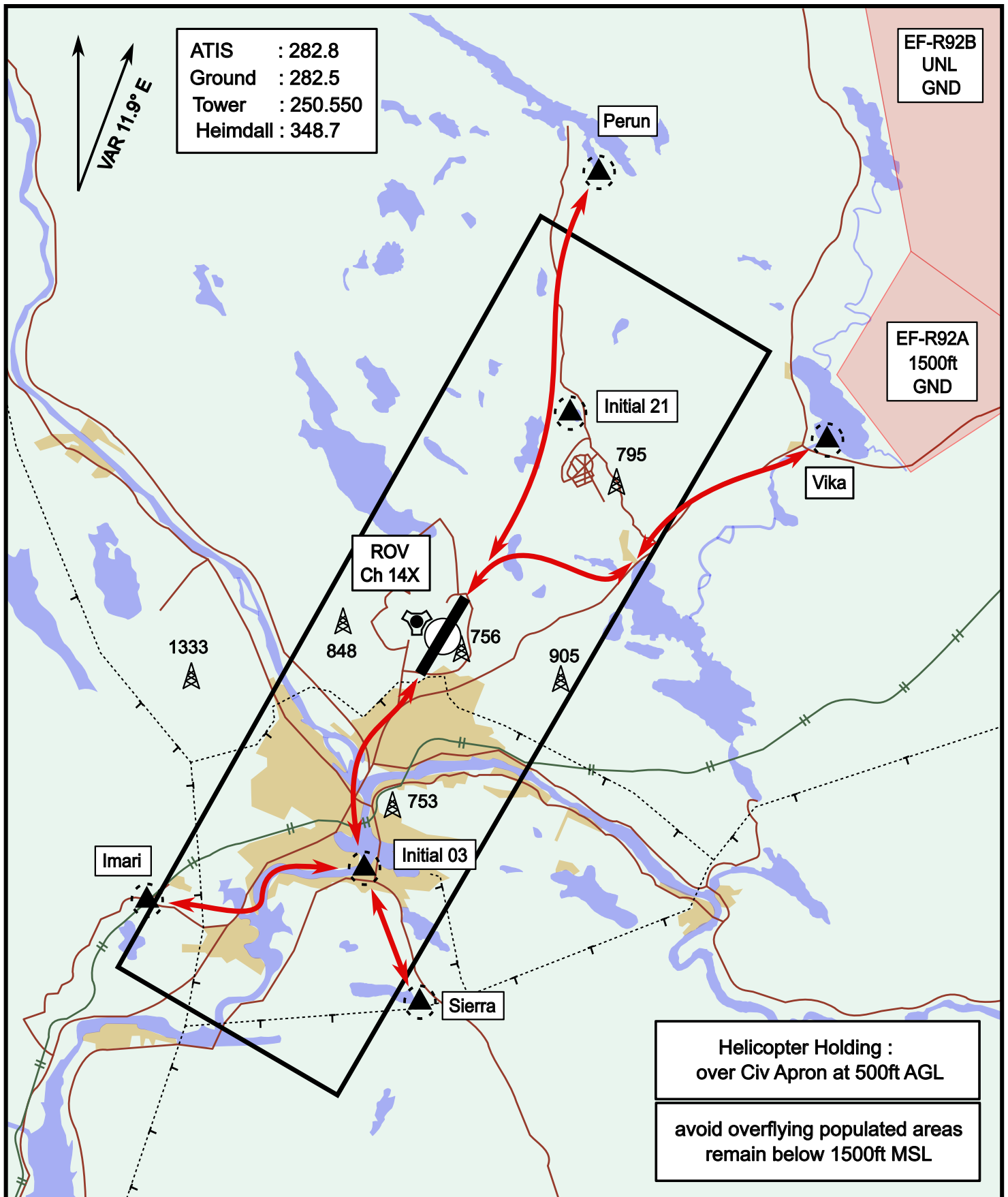


ATIS	Ground	Tower	Radar
282.800	282.500	250.550	348.700

Helicopter Routing

elev 643 ft

Rovaniemi, Finland

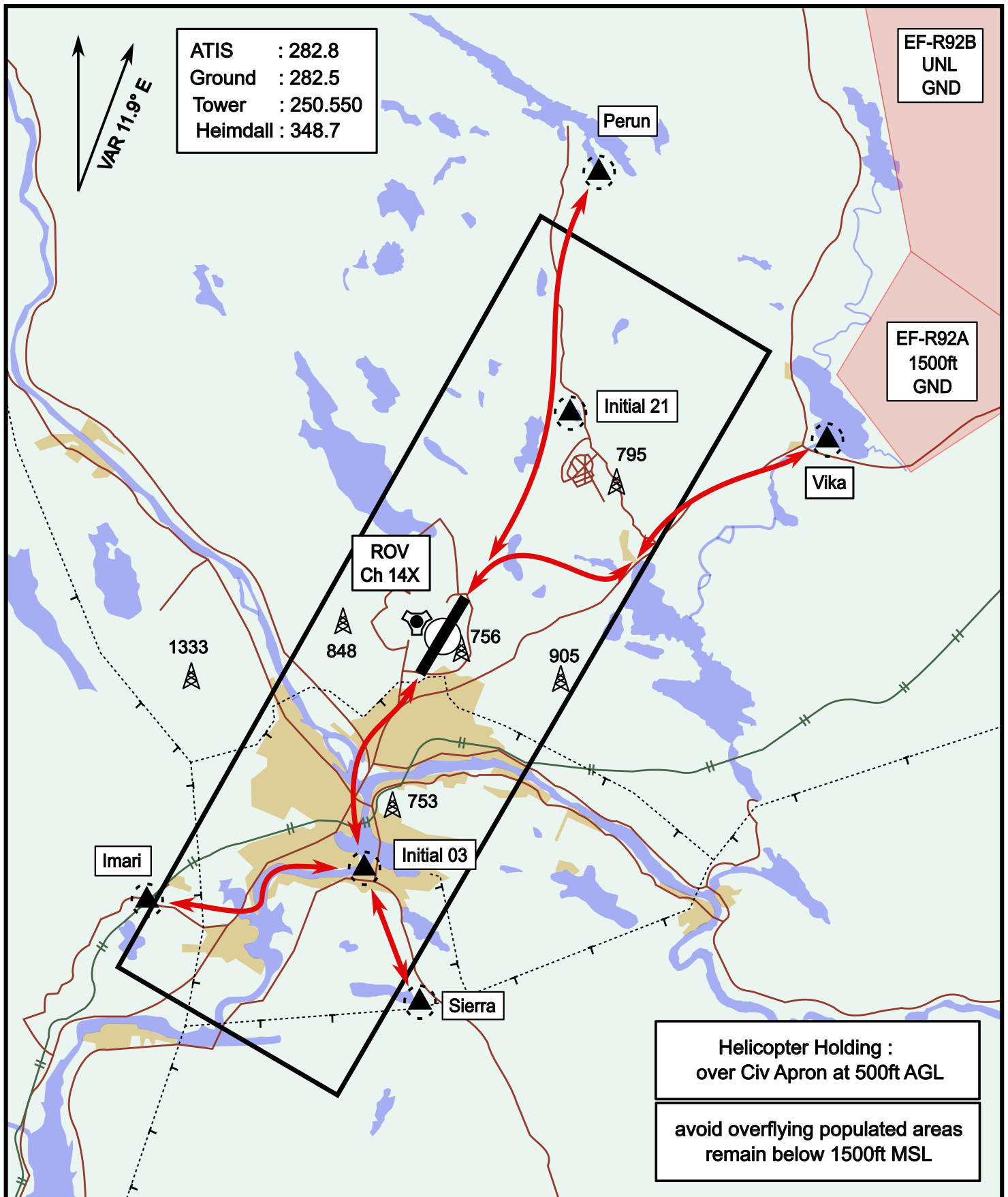


Vika	N66° 37.474 / E026° 13.557	Sierra	N66° 25.711 / E025° 46.610
Perun	N66° 44.135 / E026° 01.630	Imari	N66° 28.406 / E025° 31.291
Initial21	N66° 38.421 / E025° 58.682	Initial03	N66° 28.793 / E025° 44.105

Helicopter Routing

elev 643 ft

Rovaniemi, Finland



Vika	N66° 37.474 / E026° 13.557	Sierra	N66° 25.711 / E025° 46.610
Perun	N66° 44.135 / E026° 01.630	Imari	N66° 28.406 / E025° 31.291
Initial21	N66° 38.421 / E025° 58.682	Initial03	N66° 28.793 / E025° 44.105