

MISSION DATA CARD

OPORD	Callsign	Mission	Date/Time			
3818/2025	T-Rex 1	Training	171631APR25			
Task						Freq
AO	CAS Range ESR04					132.25
Departure			Recovery			
VFR Departure			VFR Approach			
#	Callsign	Pilot	IFF	TCN	LSR	NET
-1	T-Rex 1-1	Stoner	1511	1Y	1621	20/01
-2	T-Rex 1-2	addiks	1512	64Y	1622	20/02

LOADOUT

A/A	2xA9L	GUN	75% CM
A/G	12x7M151, 7M156	CHF	360
POD	TGP, A184L	FLR	120
TKS		FUEL	50%

TOLD

	Takeoff	Target	Joker	Bingo	Land
FUEL	5543				

AIRBASES

	Name	TCN	ATIS	GND	TWR	RWY	Elev	ILS
Dep	Rovaniemi	14X	282.8	282.5	250.55	21	643	111.7
Arr	Rovaniemi	14X	282.8	282.5	250.55	21	643	111.7

FLIGHTPLAN

#	Name	Navaid/Coords/DME	ALT	TOT
1	RVNInit21	N66 38.642 E025 58.682	2500	
2	PERUN	N66 44.135 E026 01.630	3500	
3	T.ESR04.HQ	N65 48.554 E021 41.706		
4	T.ESR04.Conv oy	N65 58.503 E021 36.744		
5	IMARI	N66 28.406 E025 31.291	3500	
6	RVNInit03	N66 28.793 E025 44.105	2500	

COMMS

Radio	Usage
1	132.15
2	2, 4, 16, 2, 4
3	32,00

NOTES

Trainingsziel ist mit unguidet Rockets auf max Entfernung zu wirken.

Da es nicht möglich ist wirklich gut zu snipern werden wir in erheblichen Salven schießen, und die Rockets als Flächenwaffe nutzen.

OTHER FLIGHTS

Callsign	Mission	Airframe	Freq	TCN	Grpld	Laser
Monster 1	Training	4x A-10C	132.15	1/64	21	161X
AO	CAS Range ESR04	Task				
Nazgul 6	Training	4x F-15E	262.45	1/64		156X
AO	ESR02	Task	WVR Training			
Rattler 1	Training	1x AH-64D	133.5	1/64		125X
AO	R92A/R92B	Task				

RADIO CHANNELS

#	Freq	Name
1		Flight/Squadron specific
2	282.8	Rovaniemi ATIS
3	282.5	Rovaniemi Ground
4	250.55	Rovaniemi Tower
5	320.7	Bodo ATIS
6	250.75	Bodo Tower
7	235.45	Kallax ATIS
8	250.3	Kallax Tower
9	265.0	Texaco-1 KC-135 Medium / Slow 71Y
10	319.8	Arco-1 KC-135 High / Fast 22Y
11	360.8	Shell-1 KC-135 MPRS High / Fast 41Y
12	304.0	CVN-71 Rough Rider (RRR) 71X
13	303.0	LHA-1 Tarawa (TWA) 79X
14	247.8	S-3B Mauler-1 (MAU) 64Y
15	347.8	Loki (E-2D)
16	348.7	Heimdall (E-3A)
17	242.17	ESR02 - CAS Range Operator
18	34.7	ESR02 - JTAC Odin
19	270.5	Blue
20	270.75	Red

RAMROD

0	1	2	3	4	5	6	7	8	9
R	E	P	U	B	L	I	C	A	N

KTC 1400 C

	0	1	2	3	4	5	6	7	8	9
A	VPIM	NKS	FJL	WA	RT	GOE	HY	UC	DB	XQ
B	NLAD	UJC	XIQ	TF	KP	SVH	WM	OE	GY	RB
C	LKUO	XET	GBA	PQ	ND	YCW	RF	VM	HS	IJ
D	NRAX	CTB	EWD	GY	FL	JUH	PS	MV	QO	IK
E	CVTP	JQA	HKL	YI	RO	SUG	XN	DW	EB	MF
F	TYNB	AUR	XQP	LI	KG	EMW	VJ	CS	FO	HD
G	L RCS	WJE	AUI	FP	BT	NVM	XD	YO	HG	KQ
H	QJFW	LBD	HOE	PC	KN	SRI	VM	AG	UT	YX
I	JYBI	HSR	NPE	WK	MA	TCO	QX	VD	FU	GL
J	YKFU	VRJ	MAT	PW	OD	XSH	BQ	IN	EL	GC
K	WEUF	DOY	NKC	SX	MT	LQR	AH	VP	IB	JG
L	NKPG	TWX	DCM	AV	EI	RBQ	OF	HY	SL	JU
M	HPVR	KYB	LCQ	SA	TO	EGU	XM	DW	JN	FI
N	NATE	FUI	XLH	JC	PS	YGD	WR	VK	BM	QO
O	SWDF	JKP	XQM	UE	NL	VIC	TO	GR	AB	YH
P	IGNY	WAT	SMC	EO	JU	QFP	XK	BV	HR	LD
Q	BLNY	EFJ	HWV	AG	UM	QRP	DT	OS	IK	XC
R	RYUV	BHW	ODG	XC	JK	PET	MQ	LF	SI	NA
S	LUSJ	KNX	TVI	AB	OM	GFR	EW	CY	QD	PH
T	MPLK	GOV	CYS	XQ	RE	DAU	WI	BN	JF	HT
U	LFRP	CKQ	HWV	DU	SX	TJE	NO	YA	BM	IG
V	BW XF	MRG	PTL	YK	EC	HOQ	SU	VJ	AI	DN
W	QVUN	XTB	HFI	GJ	OA	DYE	MP	CW	SL	KR
X	ABDV	YSC	WFQ	GT	PH	JNM	IR	KX	LE	OU
Y	PGXY	QJN	VEK	MF	WC	OSD	IT	LH	BR	UA

NAVAIDS

Id	Name	Channel	Position	Elevation
BOO	Bodo	45	N67 15.838 E014 20.046	43
BNK	Banak	47	N70 03.937 E024 58.181	17
OYA	Andoya	28	N69 17.175 E016 08.658	19

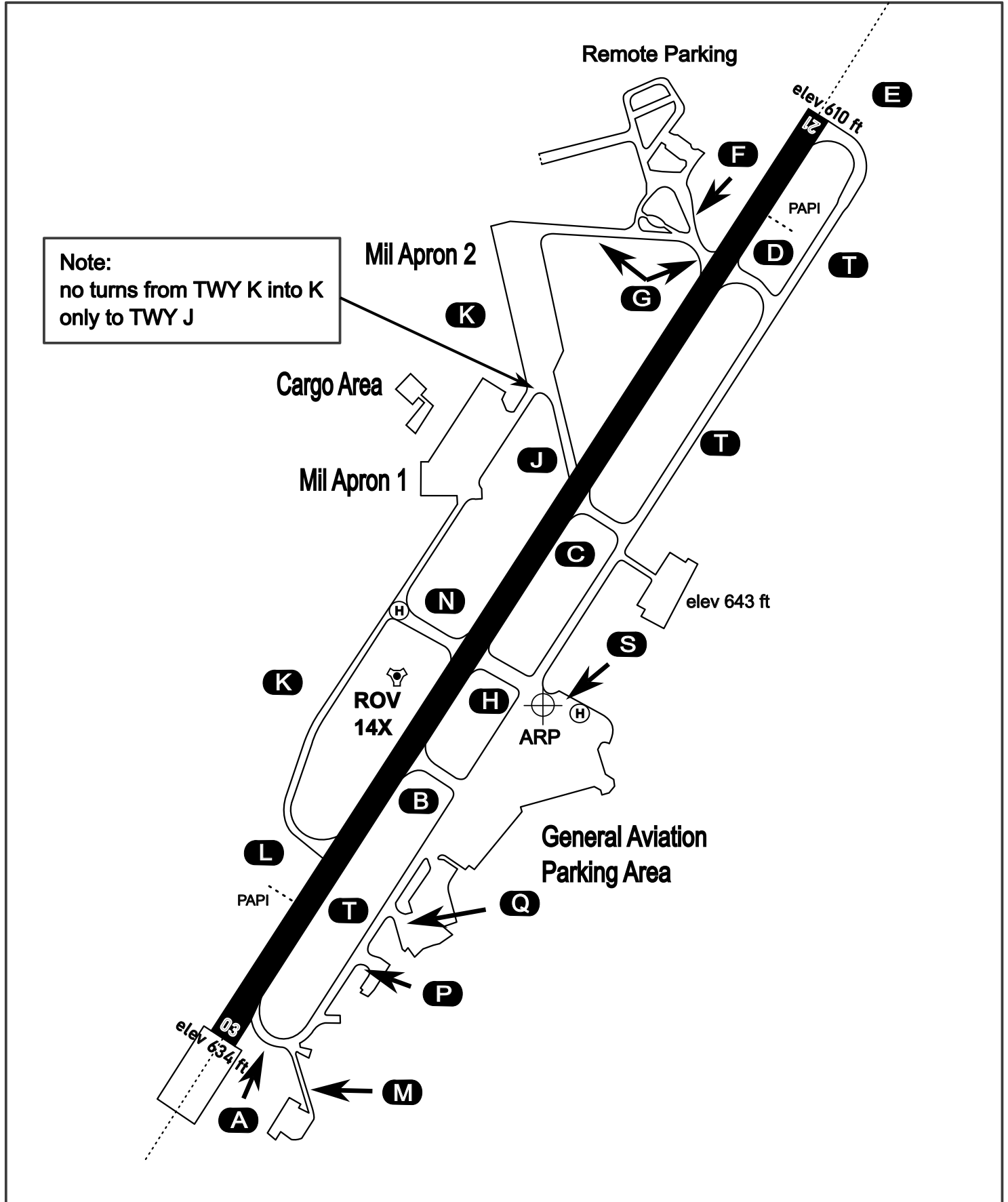
AERODROME CHART

Rovaniemi Aerodrome

ARP N66° 33' 42" E025° 49' 51"

elev 643 ft

ROVANIEMI, FINLAND

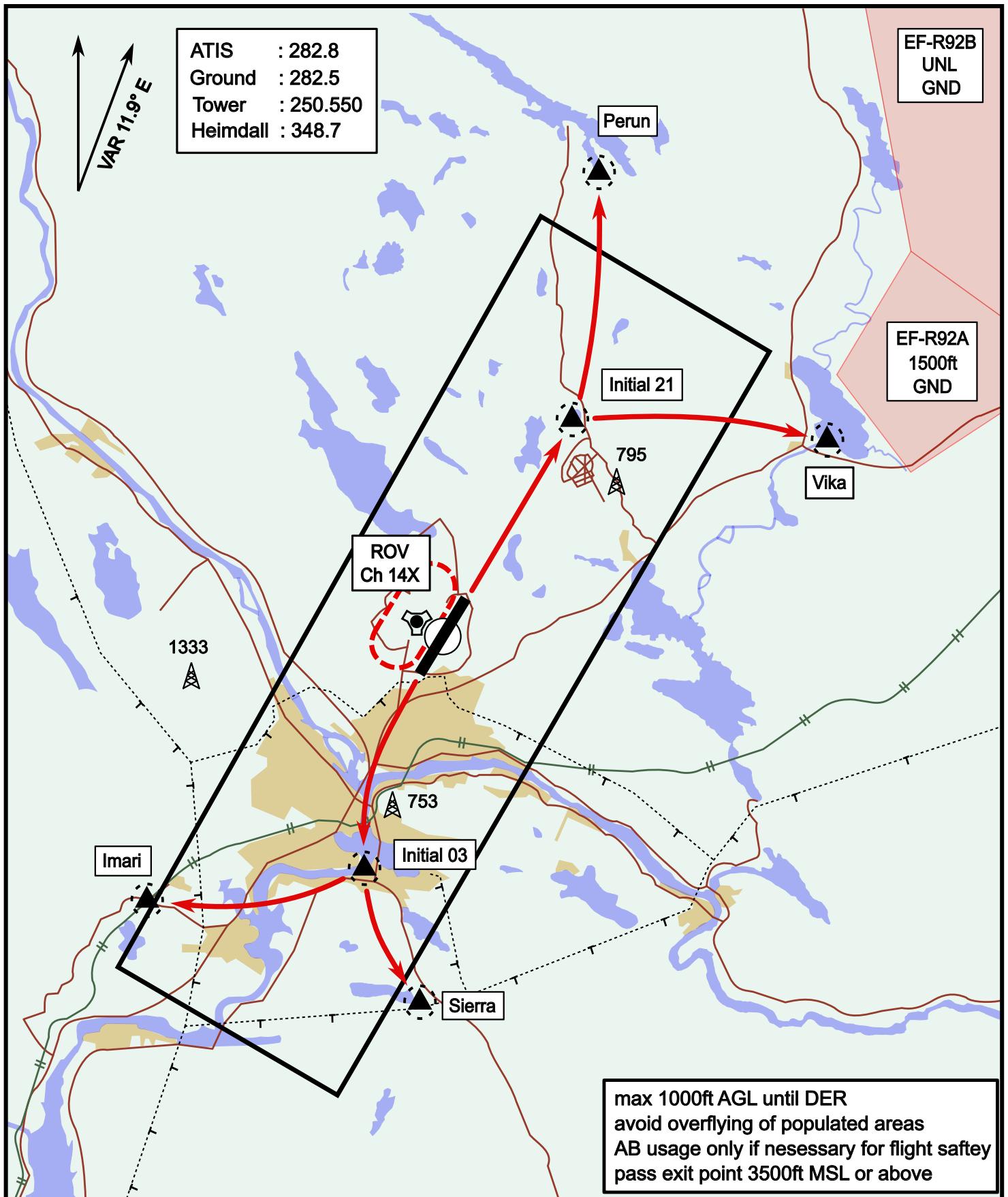


ATIS	Ground	Tower	Radar
282.800	282.500	250.550	348.700

Visual Departure Jet

elev 643 ft

Rovaniemi, Finland



Vika	N66° 37.474 / E026° 13.557	Sierra	N66° 25.711 / E025° 46.610
Perun	N66° 44.135 / E026° 01.630	Imari	N66° 28.406 / E025° 31.291
Initial21	N66° 38.421 / E025° 58.682	Initial03	N66° 28.793 / E025° 44.105

Visual Approach Jet

elev 643 ft

Rovaniemi, Finland



Vika	N66° 37.474 / E026° 13.557	Sierra	N66° 25.711 / E025° 46.610
Perun	N66° 44.135 / E026° 01.630	Imari	N66° 28.406 / E025° 31.291
Initial21	N66° 38.421 / E025° 58.682	Initial03	N66° 28.793 / E025° 44.105