

**MISSION DATA CARD**

OPORD		Callsign		Mission		Date/Time		
3816/2025		Joker*		Training		152000APR25		
Task						Freq		
AO						264.05		
Departure				Recovery				
SID RWY 03				none				
#	Callsign		Pilot		IFF	TCN	LSR	NET
-1	Joker*-1		Butcher		1701	1Y	1701	

**LOADOUT**

A/A	3xA7F				GUN	100% AP&HE	
A/G					CHF	120	
POD	A131				FLR	0	
TKS	2xFT370				FUEL	100%	

**TOLD**

	Takeoff	Target	Joker	Bingo	Land
FUEL	16969				

**AIRBASES**

	Name	TCN	ATIS	GND	TWR	RWY	Elev	ILS
Dep	Rovaniemi	14X	282.8	282.5	250.55	21	643	111.7
Arr	Kallax		235.45		250.3	32	66	109.9

**FLIGHTPLAN**

#	Name	Navaid/Coords/DME	ALT	TOT
1	Pikut	N66 38.059 E025 57.813	1000	
2	PERUN	N66 44.135 E026 01.630	2000	
3	ISBan	N66 42.339 E025	6000	
4	NEMGU	N66 20.400 E024 41.650	6000	
5	WP5	N65 30.983 E022 39.292	6000	
6	WP6	N65 28.598 E022 16.563	3000	
7	Lulea	N65 32.782 E022		

**SUPPORT****Tanker**

Callsign	TCN	Freq	ALT	TAS
TEXACO 1	71Y	265.0		
	Pos			

**AWACS**

Callsign	Freq	ALT	Pos
HEIMDALL	348.7		

## RADIO CHANNELS

#	Freq	Name
1		Flight/Squadron specific
2	282.8	Rovaniemi ATIS
3	282.5	Rovaniemi Ground
4	250.55	Rovaniemi Tower
5	320.7	Bodo ATIS
6	250.75	Bodo Tower
7	235.45	Kallax ATIS
8	250.3	Kallax Tower
9	265.0	Texaco-1   KC-135   Medium / Slow   71Y
10	319.8	Arco-1   KC-135   High / Fast   22Y
11	360.8	Shell-1   KC-135 MPRS   High / Fast   41Y
12	304.0	CVN-71 Rough Rider (RRR)   71X
13	303.0	LHA-1 Tarawa (TWA)   79X
14	247.8	S-3B Mauler-1 (MAU)  64Y
15	347.8	Loki (E-2D)
16	348.7	Heimdall (E-3A)
17	242.17	ESR02 - CAS Range Operator
18	34.7	ESR02 - JTAC Odin
19	270.5	Blue
20	270.75	Red

**RAMROD**

0	1	2	3	4	5	6	7	8	9
M	I	C	R	O	W	A	V	E	D

**KTC 1400 C**

	0	1	2	3	4	5	6	7	8	9
A	VNCM	GDX	HJR	UK	OL	QIS	BF	WE	YA	PT
B	RGTL	PDQ	UOX	BN	WA	IES	YV	CJ	FK	HM
C	XRKT	SQL	IUB	JP	HF	OEM	YA	GV	WC	ND
D	EQDJ	VHY	XSL	CR	KN	OUI	MG	AF	WT	PB
E	RBMH	SDY	PLU	KV	JX	ONI	FA	WG	ET	QC
F	XHJP	NGE	TIK	LR	DU	OQF	MA	YS	CB	WV
G	BCHP	UVQ	FLO	KW	JN	AYI	RD	ES	TG	MX
H	TXQI	SYD	UNP	KR	EG	JOW	AL	MF	BC	HV
I	VBDS	PMF	OEN	AC	QY	IHT	GX	UR	JW	LK
J	VBPA	IHE	QWO	FD	KU	YGM	JN	RT	LC	XS
K	RWOC	XJV	HTN	FS	IA	LQU	EP	KG	BY	MD
L	QNGJ	DWY	FAB	SM	IX	EKL	CH	UT	RP	VO
M	LVIG	DXY	NJW	UE	SC	ROF	HT	MK	PB	QA
N	CWKG	FHD	EJX	TP	MO	LYV	RQ	BU	IA	NS
O	NSFE	TAV	DKP	IX	OR	CHB	WU	MJ	QG	YL
P	EPJO	MTW	SHV	IR	BN	YXL	AC	QK	DG	FU
Q	QRJK	OUP	DNM	CX	WG	BYH	IV	FL	TE	AS
R	NFXT	YQJ	PDH	IC	UR	KGE	SA	OM	LB	VW
S	SQHF	KMT	IYV	LJ	PN	XBD	UO	AR	EW	CG
T	UJAX	WCH	SBF	ET	PY	DGO	IK	LV	RN	MQ
U	PEXO	RTS	DKY	VF	MB	CHU	AW	JN	IQ	LG
V	YQLI	GDB	FVA	WM	JR	CHK	UT	PO	NS	XE
W	OMPI	JHL	GXQ	UA	EB	VCF	SK	RT	YW	ND
X	JHEM	RFG	TOI	CV	AQ	WSB	PY	NK	LU	DX
Y	ICDL	VYW	GOE	HM	KX	BTP	SQ	FJ	NU	AR

**NAVAIDS**

Id	Name	Channel	Position	Elevation
BOO	Bodo	45	N67 15.838 E014 20.046	43
BNK	Banak	47	N70 03.937 E024 58.181	17
OYA	Andoya	28	N69 17.175 E016 08.658	19

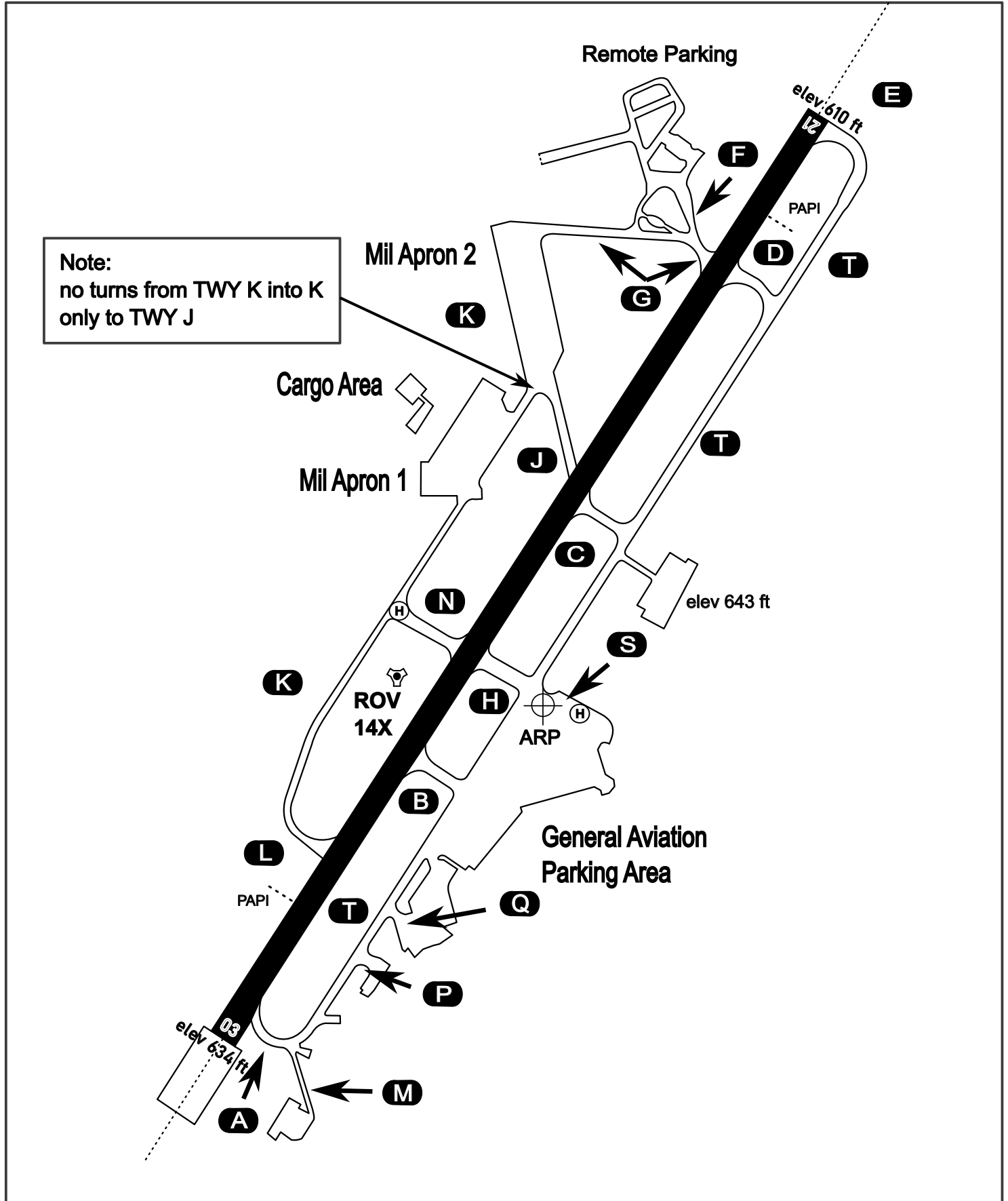
# AERODROME CHART

Rovaniemi Aerodrome

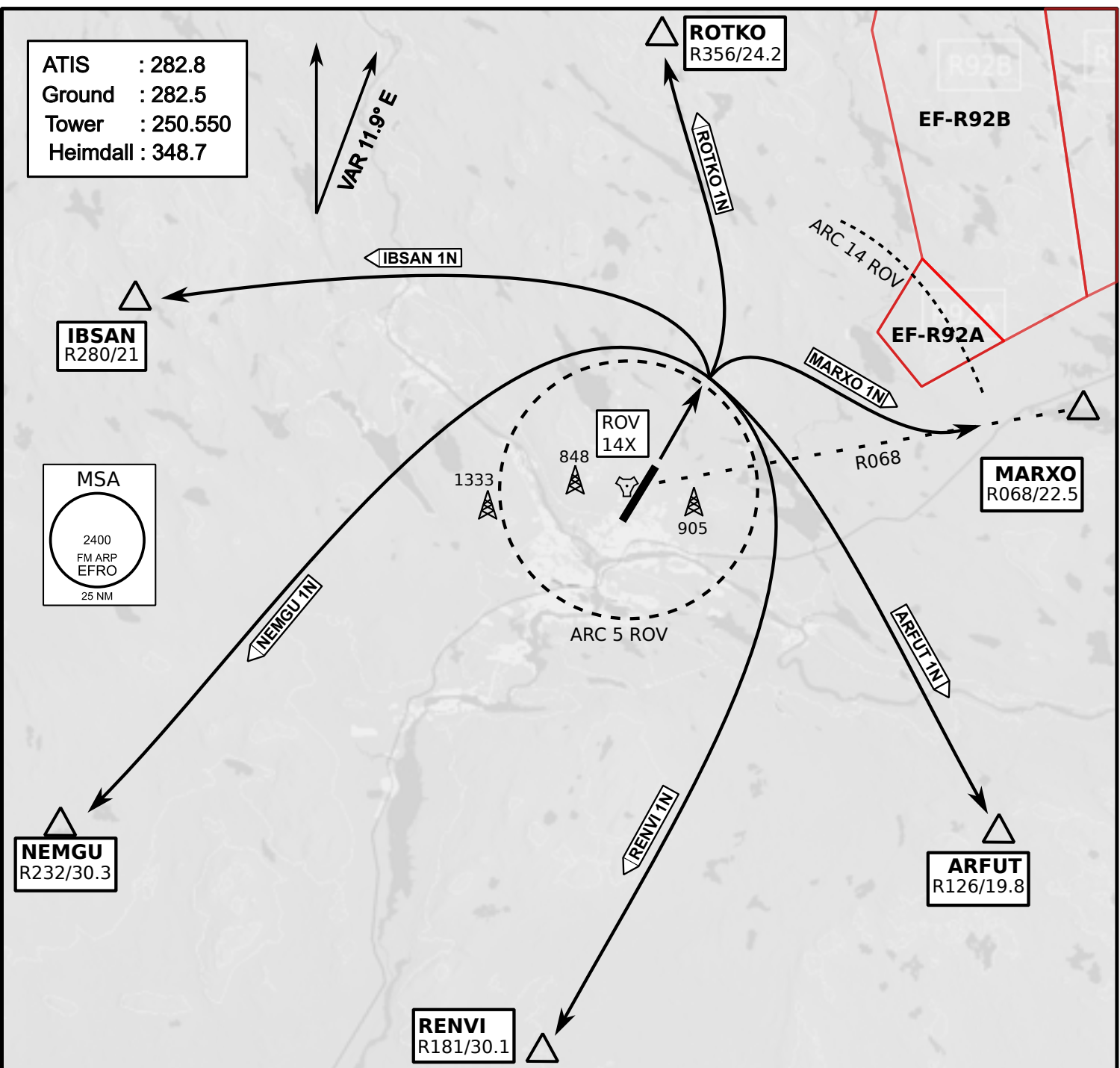
ARP N66° 33' 42" E025° 49' 51"

elev 643 ft

## ROVANIEMI, FINLAND



ATIS	Ground	Tower	Radar
282.800	282.500	250.550	348.700



- Climb on Rwy heading to min A2000ft
- when passing A2000ft OR 5 DME ROV (whichever is later) turn to exit point
- Stay outside ARC 5 ROV
- if EF-R92B is active :  
intercept R068 ROV inside 14 DME ROV to MARXO
- AB usage only if necessary for flight safety



**NOT AVAILABLE**

**NOT AVAILABLE**