

MISSION DATA CARD

OPORD		Callsign		Mission		Date/Time	
3802/2025		Nazgul 6		Training		072000APR25	
Task	CAS Training						Freq
AO	ESR04						262.45
Departure				Recovery			
VFR Depature				VFR Approach			
#	Callsign	Pilot	IFF	TCN	LSR	NET	
-1	Nazgul 6-1	Striver	1161	1Y	1561		
-3	Nazgul 6-3	Repsus/Lempo	1163	64X	1563		
-4	Nazgul 6-4	Razorback	1164	1X	1564		

LOADOUT

A/A	2xA120C, 2xA9M			GUN	100% SAPHEI
A/G	6xM82SE, G311B, 4xG12			CHF	120
POD	TGT, NAV			FLR	60
TKS	2xFT610			FUEL	100%

TOLD

	Takeoff	Target	Joker	Bingo	Land
FUEL	30518				

AIRBASES

	Name	TCN	ATIS	GND	TWR	RWY	Elev	ILS
Dep	Rovaniemi	14X	282.8	282.5	250.55	21	643	111.7
Arr	Rovaniemi	14X	282.8	282.5	250.55	21	643	111.7

FLIGHTPLAN

#	Name	Navaid/Coords/DME	ALT	TOT
1	RVNInit03	N66 28.793 E025 44.105	1500	
2	IMARI	N66 28.406 E025 31.291	3500	
3	IBSAN	N66 42.500 E025 01.083	20000	
4	NAFFI	N67 04.630 E023 11.660	20000	
5	ENOXI	N66 54.960 E021 38.780	20000	
6	T.ESR04.Cros sroads	N65 50.819 E021 43.955	500	
7	T.ESR04.Arty	N65 58.635 E021 41.106	500	
8	T.ESR04.Armo red Attack	N65 51.471 E021 28.020	500	
9	T.ESR04.HQ	N65 48.554 E021 41.706	500	
10	T.ESR04.Conv oy	N65 58.503 E021 36.744	500	
11	IP		2500	
12	ECHO		2500	
13	PERUN	N66 44.135 E026 01.630	2500	
14	RVNInit21	N66 38.642 E025 58.682	2000	

COMMS

Radio	Usage
1	1
2	2/(3)/4/16/4/(3)/2

SUPPORT**AWACS**

Callsign

Freq

ALT

Pos

HEIMDALL

348.7

OTHER FLIGHTS

Callsign	Mission	Airframe	Freq	TCN	Grpld	Laser
Tiger 1	Training	4x F/A-18C	261.15	1/64	1	155X
AO		Task				
Joker* 1	Training	2x F-4E	264.05	1/64		170X
AO		Task				
T-Rex 1	Training	4x A-10C	132.25	1/64	25	165X
AO	R92D	Task	Training			

RADIO CHANNELS

#	Freq	Name
1		Flight/Squadron specific
2	282.8	Rovaniemi ATIS
3	282.5	Rovaniemi Ground
4	250.55	Rovaniemi Tower
5	320.7	Bodo ATIS
6	250.75	Bodo Tower
7	235.45	Kallax ATIS
8	250.3	Kallax Tower
9	265.0	Texaco-1 KC-135 Medium / Slow 71Y
10	319.8	Arco-1 KC-135 High / Fast 22Y
11	360.8	Shell-1 KC-135 MPRS High / Fast 41Y
12	304.0	CVN-71 Rough Rider (RRR) 71X
13	303.0	LHA-1 Tarawa (TWA) 79X
14	247.8	S-3B Mauler-1 (MAU) 64Y
15	347.8	Loki (E-2D)
16	348.7	Heimdall (E-3A)
17	242.17	ESR02 - CAS Range Operator
18	34.7	ESR02 - JTAC Odin
19	270.5	Blue
20	270.75	Red

RAMROD

0	1	2	3	4	5	6	7	8	9
S	C	A	M	P	E	R	I	N	G

KTC 1400 C

	0	1	2	3	4	5	6	7	8	9
A	UQPH	RLB	MKX	GC	OA	NVS	ID	YT	EJ	WF
B	QFEA	JUB	OMV	DI	HS	WNX	RY	TG	CK	PL
C	XAFW	QSK	HND	OP	BY	RCL	VE	MI	GT	JU
D	AQDI	WKJ	XSP	VL	HO	FRC	MN	UT	EG	YB
E	MFPJ	CGX	DLW	VH	YB	OKU	AQ	NT	RE	IS
F	NFYB	OPQ	RXK	WM	SD	EAC	IG	JL	UT	HV
G	HGQP	JFM	RVU	XN	DE	IST	CK	WB	AL	YO
H	QGVT	DBS	LYI	OJ	XC	KUE	NM	WH	PF	RA
I	MBIH	SJE	XGA	OD	WK	PCU	QY	TV	NL	RF
J	YIHR	QKP	VXU	EW	AF	NSD	OG	CB	TL	MJ
K	INEP	SFY	LGT	QB	UA	XDK	OW	JV	CR	MH
L	TILO	WRX	AED	NJ	MH	SUY	QG	PV	CK	FB
M	NXED	GKC	FRP	LA	JQ	WOV	IB	UY	SH	MT
N	IBMS	VRE	JCF	HD	NL	KQW	TY	PA	XG	UO
O	ADBX	JSW	CQM	PL	RK	FYV	NE	TI	GH	OU
P	RXSQ	LMA	INW	BV	HG	PKE	CD	YU	TO	FJ
Q	EONC	KYL	APM	WV	QT	IGF	SU	RD	BJ	XH
R	SULM	VHK	CQO	NE	IA	WBF	DX	PY	JG	RT
S	KUGP	XVN	YOR	MF	WS	IBL	HE	JQ	AC	TD
T	LMPQ	JND	XVE	TK	CB	AFI	SH	OR	YG	WU
U	OXKF	WHV	GLC	BP	YT	JUN	SM	QD	ER	IA
V	OTGS	YDB	JRV	FN	MW	EQI	HA	PK	LU	CX
W	AHXM	VTK	JPC	NO	SL	IWF	GY	UD	RE	BQ
X	SYDG	EWP	AUT	RQ	JL	BNV	OM	IX	CH	KF
Y	VHED	ASW	JCR	LT	PQ	FMX	YB	OI	NK	GU

NAVAIDS

Id	Name	Channel	Position	Elevation
BOO	Bodo	45	N67 15.838 E014 20.046	43
BNK	Banak	47	N70 03.937 E024 58.181	17
OYA	Andoya	28	N69 17.175 E016 08.658	19

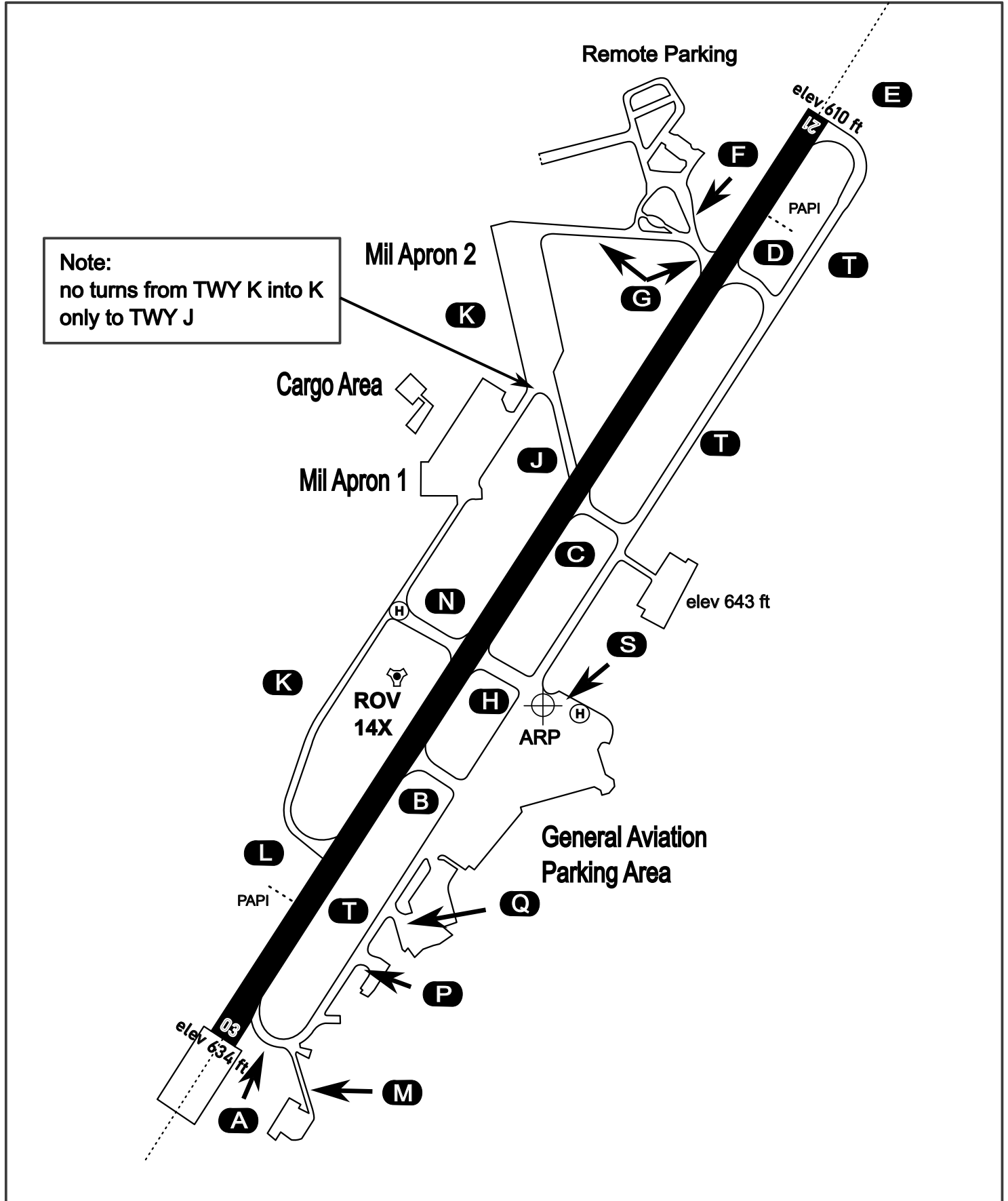
AERODROME CHART

Rovaniemi Aerodrome

ARP N66° 33' 42" E025° 49' 51"

elev 643 ft

ROVANIEMI, FINLAND

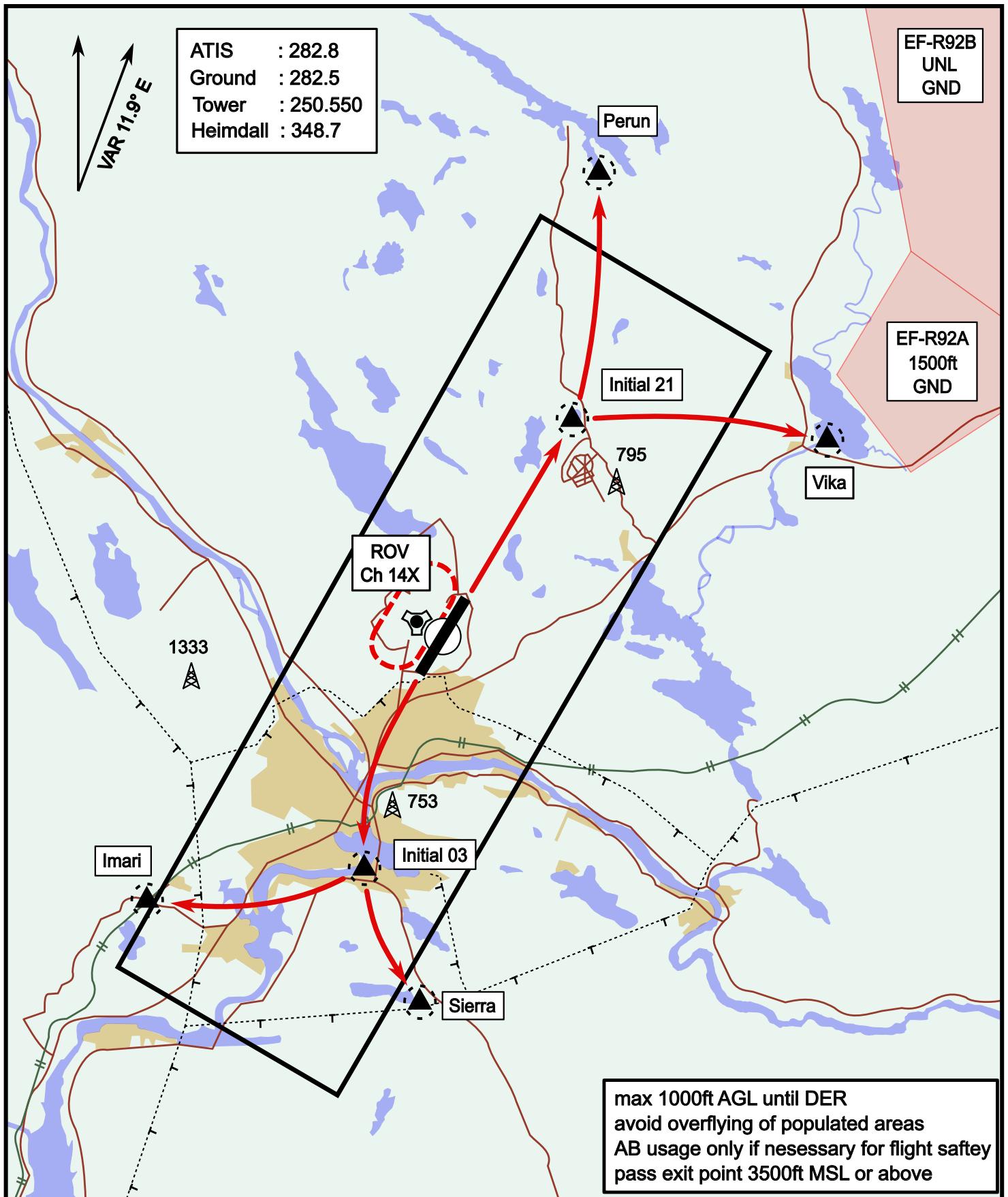


ATIS	Ground	Tower	Radar
282.800	282.500	250.550	348.700

Visual Departure Jet

elev 643 ft

Rovaniemi, Finland



Vika	N66° 37.474 / E026° 13.557	Sierra	N66° 25.711 / E025° 46.610
Perun	N66° 44.135 / E026° 01.630	Imari	N66° 28.406 / E025° 31.291
Initial21	N66° 38.421 / E025° 58.682	Initial03	N66° 28.793 / E025° 44.105

Visual Approach Jet

elev 643 ft

Rovaniemi, Finland



Vika	N66° 37.474 / E026° 13.557	Sierra	N66° 25.711 / E025° 46.610
Perun	N66° 44.135 / E026° 01.630	Imari	N66° 28.406 / E025° 31.291
Initial21	N66° 38.421 / E025° 58.682	Initial03	N66° 28.793 / E025° 44.105