

MISSION DATA CARD

OPORD		Callsign		Mission		Date/Time		
3797/2025		BamBam 2		Training		032000APR25		
Task						Freq		
AO	EF-R92C					133.5		
Departure				Recovery				
VFR Helicopter				VFR Helicopter				
#	Callsign		Pilot		IFF	TCN	LSR	NET
-1	BamBam 2-1		Remotex/Mütze		4721	1Y	1701	
-2	BamBam 2-2		Laud		4722	64Y	1702	

LOADOUT

A/A						GUN	26% HEDP
A/G	12xAGM114K, 4xAGM114L					CHF	30
POD						FLR	60
TKS						FUEL	100%

TOLD

	Takeoff	Target	Joker	Bingo	Land
FUEL	2513				

AIRBASES

	Name	TCN	ATIS	GND	TWR	RWY	Elev	ILS
Dep	Rovaniemi	14X	282.8	282.5	250.55	21	643	111.7
Arr	Rovaniemi	14X	282.8	282.5	250.55	21	643	111.7

FLIGHTPLAN

#	Name	Navaid/Coords/DME	ALT	TOT
1	VIKA	N66 37.474 E026 13.557		
2	R92A.FARP.KI MI	N66 37.800 E026 22.717		
3	R92B.BP.ALP HA	N66 39.867 E026 28.783		

COMMS

Radio	Usage
1	133.50
2	250.550

OTHER FLIGHTS

Callsign	Mission	Airframe	Freq	TCN	Grpld	Laser
Monster 1	Training	4x A-10C	132.15	1/64	21	161X
AO	NORTH OF ROV	Task	TACT FORMATION			

RADIO CHANNELS

#	Freq	Name
1		Flight/Squadron specific
2	282.8	Rovaniemi ATIS
3	282.5	Rovaniemi Ground
4	250.55	Rovaniemi Tower
5	320.7	Bodo ATIS
6	250.75	Bodo Tower
7	235.45	Kallax ATIS
8	250.3	Kallax Tower
9	265.0	Texaco-1 KC-135 Medium / Slow 71Y
10	319.8	Arco-1 KC-135 High / Fast 22Y
11	360.8	Shell-1 KC-135 MPRS High / Fast 41Y
12	304.0	CVN-71 Rough Rider (RRR) 71X
13	303.0	LHA-1 Tarawa (TWA) 79X
14	247.8	S-3B Mauler-1 (MAU) 64Y
15	347.8	Loki (E-2D)
16	348.7	Heimdall (E-3A)
17	242.17	ESR02 - CAS Range Operator
18	34.7	ESR02 - JTAC Odin
19	270.5	Blue
20	270.75	Red

RAMROD

0	1	2	3	4	5	6	7	8	9
P	A	U	N	C	H	I	E	S	T

KTC 1400 C

	0	1	2	3	4	5	6	7	8	9
A	XLUE	SIW	QRB	TM	JA	YVG	HD	PF	CO	NK
B	JRVO	KMI	LHC	NG	FE	ASQ	XD	WY	TB	PU
C	INBQ	UDG	JSA	FW	PL	VKC	XH	EM	TR	OY
D	DNLX	IVQ	GHO	JW	KC	FRB	YA	PS	UT	EM
E	YWTK	SRB	DCA	LQ	IV	NEO	XH	UJ	FP	MG
F	RSQY	HDL	UNK	AV	WC	OXF	FJ	TG	BE	MI
G	TNHL	JRQ	CWK	DI	UV	SAY	FB	GO	MP	XE
H	MQGV	XNH	UJF	BK	IT	WYD	LC	OP	RE	SA
I	BDLV	HKE	MNF	OA	GI	TJP	XC	QY	SW	RU
J	BLRM	GJF	CAX	QK	OU	HNI	PW	YV	TS	ED
K	IVKG	NMX	EBW	JO	RS	CTH	DU	LP	YA	FQ
L	THGB	PDE	XRW	NI	VF	ASQ	CY	OJ	LM	UK
M	RPOS	FTL	BGH	UD	AK	MYV	JC	WE	QI	NX
N	MGKC	UDY	QBO	AH	EI	JWV	NL	PT	XS	FR
O	HCJI	QVX	URO	PN	WY	KDG	MA	LB	FE	ST
P	BFUP	DOL	GXQ	HM	KY	WRI	VC	TS	EN	JA
Q	GCYH	PDN	IMU	RO	XB	VJQ	KL	FT	ES	AW
R	PWFU	OGQ	IEC	SR	BK	YHX	VJ	AM	LT	DN
S	MXHQ	BPR	KOT	JS	ED	LFV	YA	UW	GC	IN
T	HBDM	OTF	IJL	WU	EP	RNQ	YC	SX	AK	GV
U	VIPK	HXL	WMD	FY	CN	TGB	AS	JQ	EO	UR
V	PSLK	AFJ	HRB	MX	TO	VQE	CG	NU	WI	DY
W	FVOU	JRT	XIW	NC	PK	LEH	QD	SY	GA	BM
X	HYGT	RLO	XID	KA	EM	VFB	PC	UJ	NQ	WS
Y	XJOS	QIC	YGH	KV	BN	LEA	DW	UM	FR	PT

NAVAIDS

Id	Name	Channel	Position	Elevation
BOO	Bodo	45	N67 15.838 E014 20.046	43
BNK	Banak	47	N70 03.937 E024 58.181	17
OYA	Andoya	28	N69 17.175 E016 08.658	19

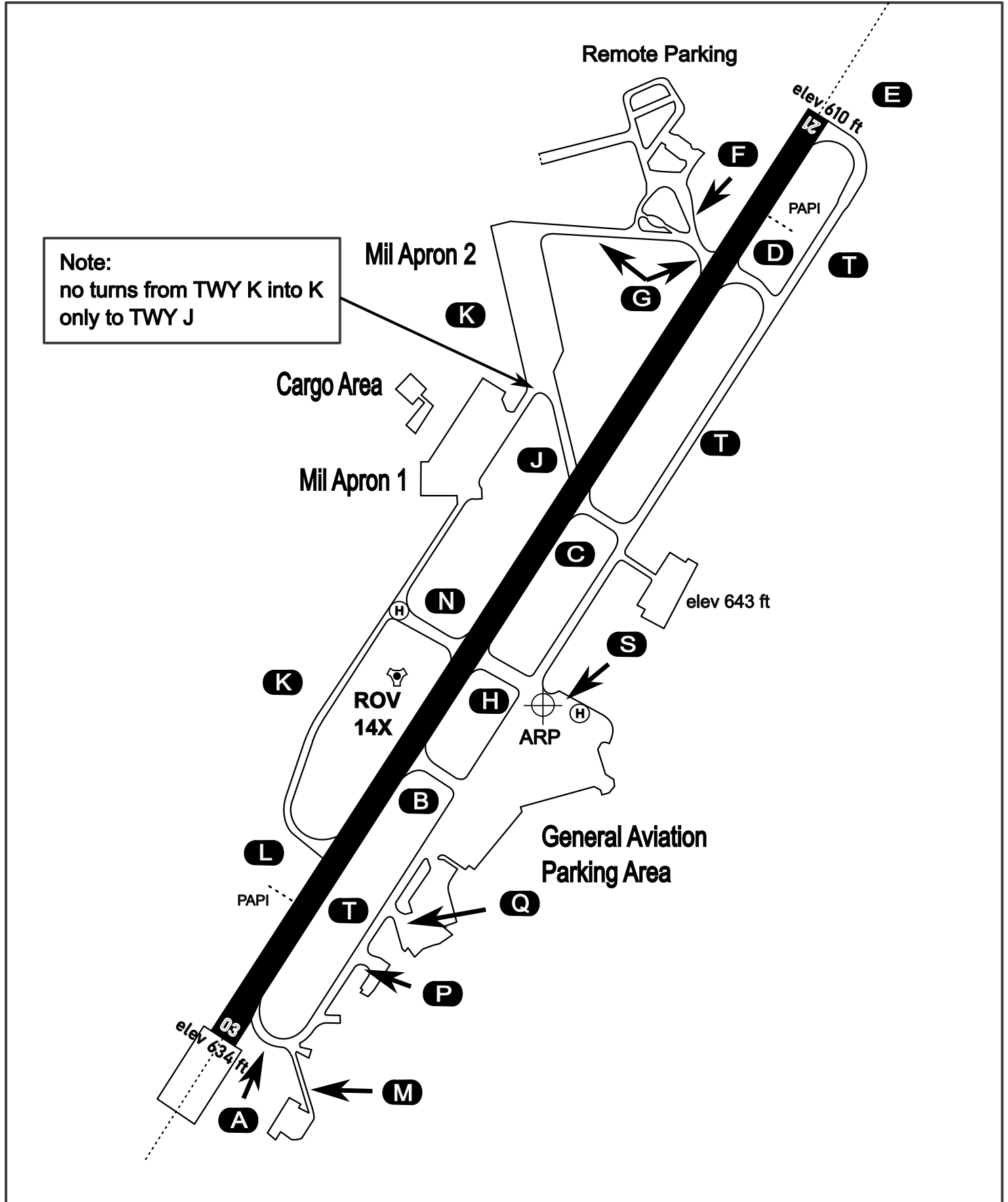
AERODROME CHART

Rovaniemi Aerodrome

ARP N66° 33' 42" E025° 49' 51"

elev 643 ft

ROVANIEMI, FINLAND

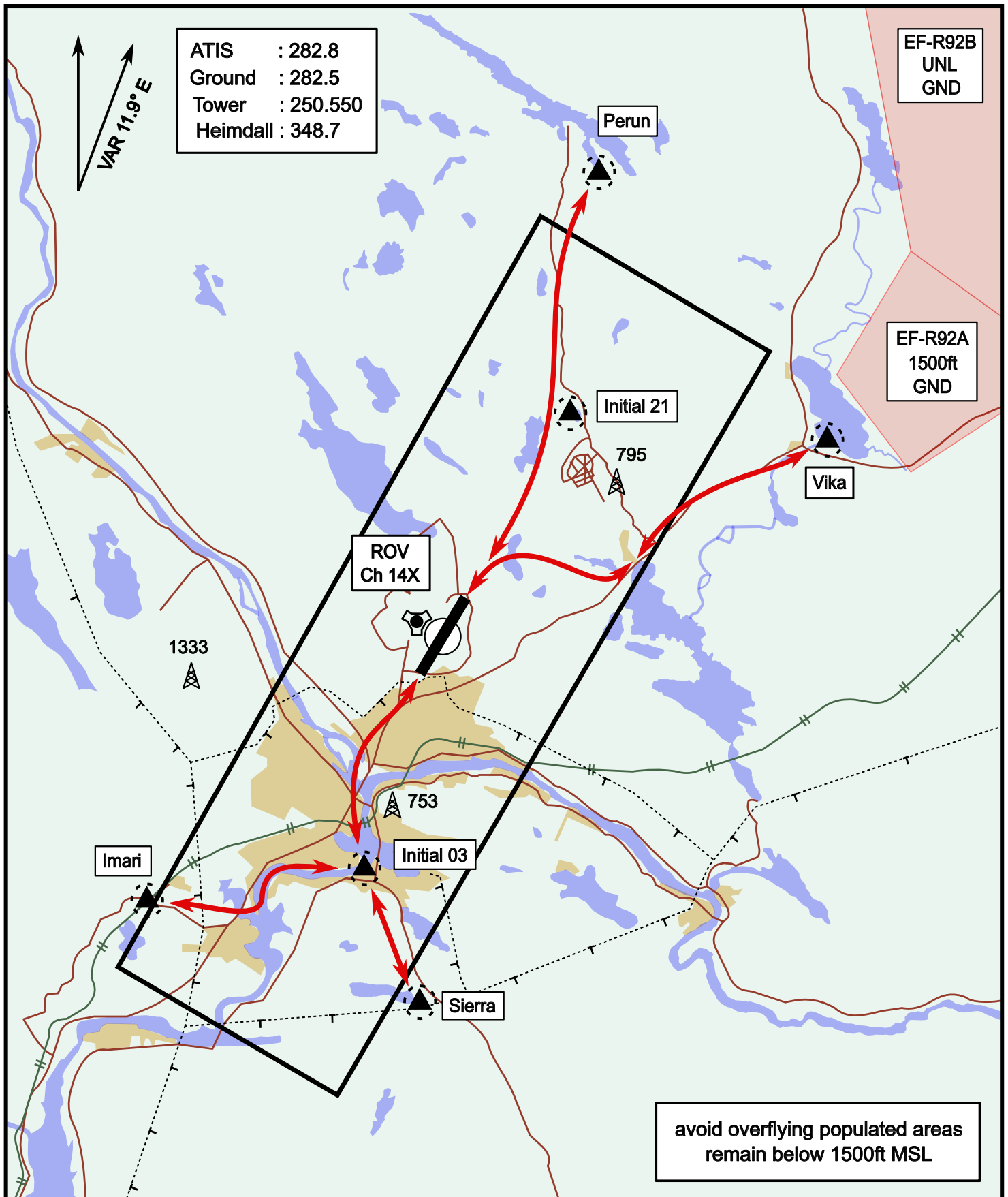


ATIS	Ground	Tower	Radar
282.800	282.500	250.550	348.700

Helicopter Routing

elev 643 ft

Rovaniemi, Finland

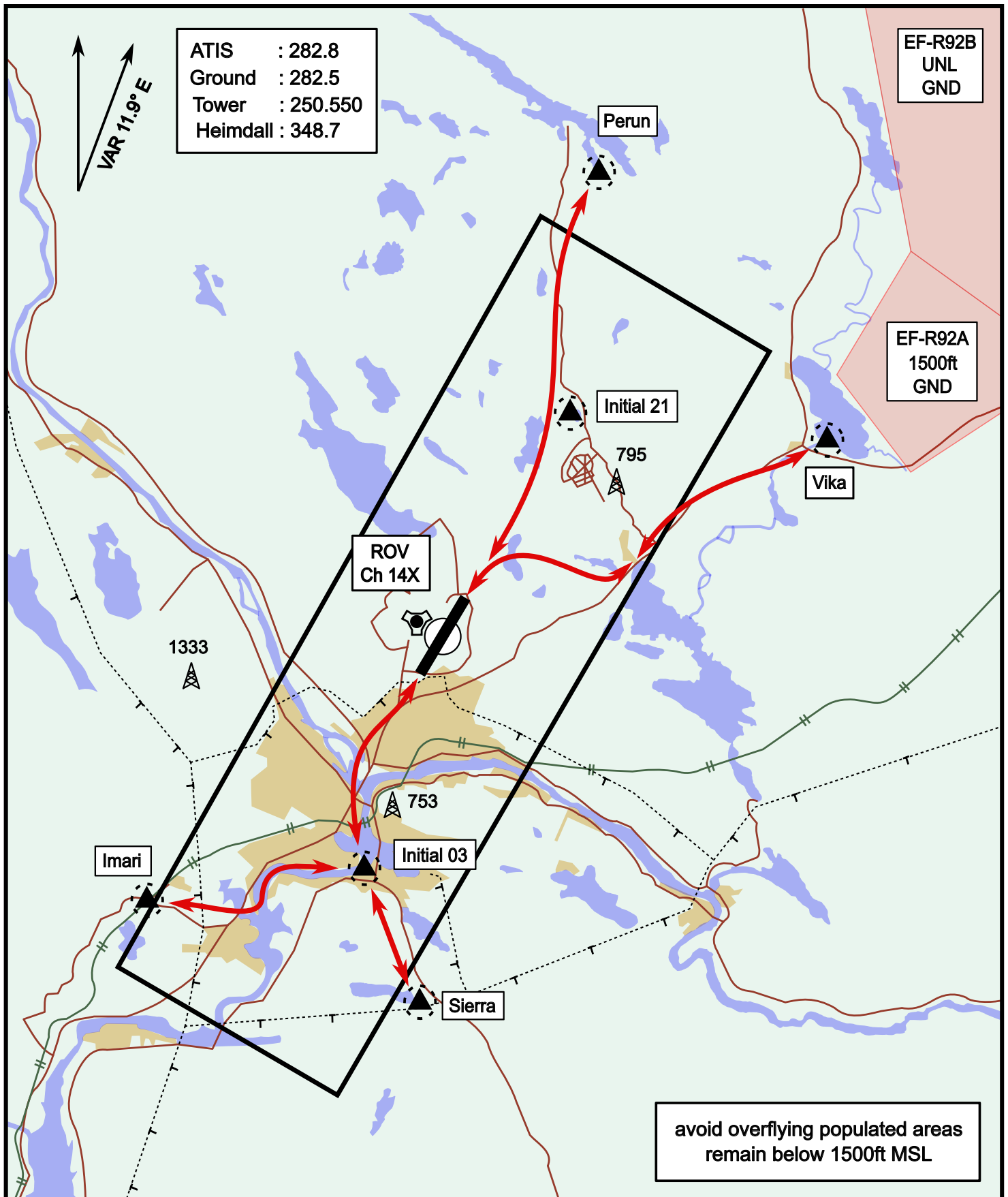


Vika	N66° 37.474 / E026° 13.557	Sierra	N66° 25.711 / E025° 46.610
Perun	N66° 44.135 / E026° 01.630	Imari	N66° 28.406 / E025° 31.291
Initial21	N66° 38.421 / E025° 58.682	Initial03	N66° 28.793 / E025° 44.105

Helicopter Routing

elev 643 ft

Rovaniemi, Finland



Vika	N66° 37.474 / E026° 13.557	Sierra	N66° 25.711 / E025° 46.610
Perun	N66° 44.135 / E026° 01.630	Imari	N66° 28.406 / E025° 31.291
Initial21	N66° 38.421 / E025° 58.682	Initial03	N66° 28.793 / E025° 44.105