

**MISSION DATA CARD**

OPORD		Callsign		Mission		Date/Time	
3796/2025		Monster 1		Training		032000APR25	
Task	TACT FORMATION					Freq	
AO	NORTH OF ROV					132.15	
Departure				Recovery			
VFR Departure				VFR Approach			
#	Callsign	Pilot	IFF	TCN	LSR	NET	
-1	Monster 1-1	addiks	1411	1Y	1611	21/01	
-2	Monster 1-2	Marsy	1412	64Y	1612	21/02	
-3	Monster 1-3	Toolface	1413	64X	1613	21/03	
-4	Monster 1-4	Stoner	1414	1X	1614	21/04	

**LOADOUT**

A/A	A9M	GUN	100% CM
A/G	7M282L	CHF	120
POD	A184L, TGP	FLR	360
TKS		FUEL	70%

**TOLD**

	Takeoff	Target	Joker	Bingo	Land
FUEL	7760				

**AIRBASES**

	Name	TCN	ATIS	GND	TWR	RWY	Elev	ILS
Dep	Rovaniemi	14X	282.8	282.5	250.55	21	643	111.7
Arr	Rovaniemi	14X	282.8	282.5	250.55	21	643	111.7

**FLIGHTPLAN**

#	Name	Navaid/Coords/DME	ALT	TOT
1	VIKA	N66 37.474 E026 13.557	3000	
2	SIERRA	N66 25.711 E025 46.610	3000	
3	IMARI	N66 28.406 E025 31.291	3000	
4	PERUN	N66 44.135 E026 01.630	3000	
5	TRAINING	N67 39.523 E025 55.555	10000	
6	AR.SHELL1	N67 26.792 E024 34.717		
7	RVNInit21	N66 38.642 E025 58.682	2000	
8	RVNInit03	N66 28.793 E025 44.105	2000	

**COMMS**

Radio	Usage
1	132.15
2	2-4-16-2-4

## NOTES

### Ablauf:

- \* Kurze theoretische Besprechung der Formationen
- \* Abflug RVN, Departure to the North
- \* Die Four-Ship Formationen werden durchgespielt (Siehe unten)
- \* Spätestens bei Erreichen von Wegpunkt 5:
- \* Als 4-Ship Line-Abreast einnehmen
- \* Visuelle Coverage zu Vor- & Hintermann prüfen ( $0^\circ$ ,  $25^\circ$ ,  $45^\circ$ ,  $70^\circ$ )
- \* Zweites Element spaltet sich ab. Erstes Element nach Westen, zweites nach Osten
- \* Beide Element gehen jeweils die Two-Ship-Formationen durch
- \* Danach im Trail, Low-Level zurück zu Wegpunkt 5 (TRAINING)
- \* Bei Wegpunkt 5 wieder 4-Ship Re-Join
- \* Dann ab zum Tanker, Air-to-Air Refueling
- \* Landing at RVN

### Arten von Formationen:

- \* Line Abreast (Gute visuelle Coverage, schlecht bei geringer Höhe, schlecht Manövrierbar)
- \* Trail & Wedge (Schlechte visuelle Coverage, besser bei geringer Höhe, besser Manövrierbar)

### Four-Ship-Formationen: (6000-9000ft Line; 6000-18000ft Trail)

- \* Box (Low-Stack / High-Stack)
- \* Offset Box
- \* Wedge Trail Wedge
- \* Wedge on Wedge

### Two-Ship-Formationen:

- \* Fighting Wing (500-3000ft;  $20^\circ$ - $60^\circ$ )
- \* Combat Trail (3000-6000ft;  $120^\circ$  cone)
- \* Line Abreast (6000-9000ft;  $10^\circ$  / +-2000ft)
- \* Wedge (6000-9000ft;  $30^\circ$ - $60^\circ$ )
- \* Trail (6000-18000ft;  $30^\circ$  cone)

**SUPPORT****Tanker**

Callsign	TCN	Freq	ALT	TAS
SHELL 1	41Y	360.8		
Pos				

**OTHER FLIGHTS**

Callsign	Mission	Airframe	Freq	TCN	Grpld	Laser
BamBam 2	Training	2x AH-64D	133.5	1/64		170X
AO	EF-R92C	Task				

## RADIO CHANNELS

#	Freq	Name
1		Flight/Squadron specific
2	282.8	Rovaniemi ATIS
3	282.5	Rovaniemi Ground
4	250.55	Rovaniemi Tower
5	320.7	Bodo ATIS
6	250.75	Bodo Tower
7	235.45	Kallax ATIS
8	250.3	Kallax Tower
9	265.0	Texaco-1   KC-135   Medium / Slow   71Y
10	319.8	Arco-1   KC-135   High / Fast   22Y
11	360.8	Shell-1   KC-135 MPRS   High / Fast   41Y
12	304.0	CVN-71 Rough Rider (RRR)   71X
13	303.0	LHA-1 Tarawa (TWA)   79X
14	247.8	S-3B Mauler-1 (MAU)  64Y
15	347.8	Loki (E-2D)
16	348.7	Heimdall (E-3A)
17	242.17	ESR02 - CAS Range Operator
18	34.7	ESR02 - JTAC Odin
19	270.5	Blue
20	270.75	Red

**RAMROD**

0	1	2	3	4	5	6	7	8	9
P	A	U	N	C	H	I	E	S	T

**KTC 1400 C**

	0	1	2	3	4	5	6	7	8	9
A	XLUE	SIW	QRB	TM	JA	YVG	HD	PF	CO	NK
B	JRVO	KMI	LHC	NG	FE	ASQ	XD	WY	TB	PU
C	INBQ	UDG	JSA	FW	PL	VKC	XH	EM	TR	OY
D	DNLX	IVQ	GHO	JW	KC	FRB	YA	PS	UT	EM
E	YWTK	SRB	DCA	LQ	IV	NEO	XH	UJ	FP	MG
F	RSQY	HDL	UNK	AV	WC	OXF	FJ	TG	BE	MI
G	TNHL	JRQ	CWK	DI	UV	SAY	FB	GO	MP	XE
H	MQGV	XNH	UJF	BK	IT	WYD	LC	OP	RE	SA
I	BDLV	HKE	MNF	OA	GI	TJP	XC	QY	SW	RU
J	BLRM	GJF	CAX	QK	OU	HNI	PW	YV	TS	ED
K	IVKG	NMX	EBW	JO	RS	CTH	DU	LP	YA	FQ
L	THGB	PDE	XRW	NI	VF	ASQ	CY	OJ	LM	UK
M	RPOS	FTL	BGH	UD	AK	MYV	JC	WE	QI	NX
N	MGKC	UDY	QBO	AH	EI	JWV	NL	PT	XS	FR
O	HCJI	QVX	URO	PN	WY	KDG	MA	LB	FE	ST
P	BFUP	DOL	GXQ	HM	KY	WRI	VC	TS	EN	JA
Q	GCYH	PDN	IMU	RO	XB	VJQ	KL	FT	ES	AW
R	PWFU	OGQ	IEC	SR	BK	YHX	VJ	AM	LT	DN
S	MXHQ	BPR	KOT	JS	ED	LFV	YA	UW	GC	IN
T	HBDM	OTF	IJL	WU	EP	RNQ	YC	SX	AK	GV
U	VIPK	HXL	WMD	FY	CN	TGB	AS	JQ	EO	UR
V	PSLK	AFJ	HRB	MX	TO	VQE	CG	NU	WI	DY
W	FVOU	JRT	XIW	NC	PK	LEH	QD	SY	GA	BM
X	HYGT	RLO	XID	KA	EM	VFB	PC	UJ	NQ	WS
Y	XJOS	QIC	YGH	KV	BN	LEA	DW	UM	FR	PT

**NAVAIDS**

Id	Name	Channel	Position	Elevation
BOO	Bodo	45	N67 15.838 E014 20.046	43
BNK	Banak	47	N70 03.937 E024 58.181	17
OYA	Andoya	28	N69 17.175 E016 08.658	19



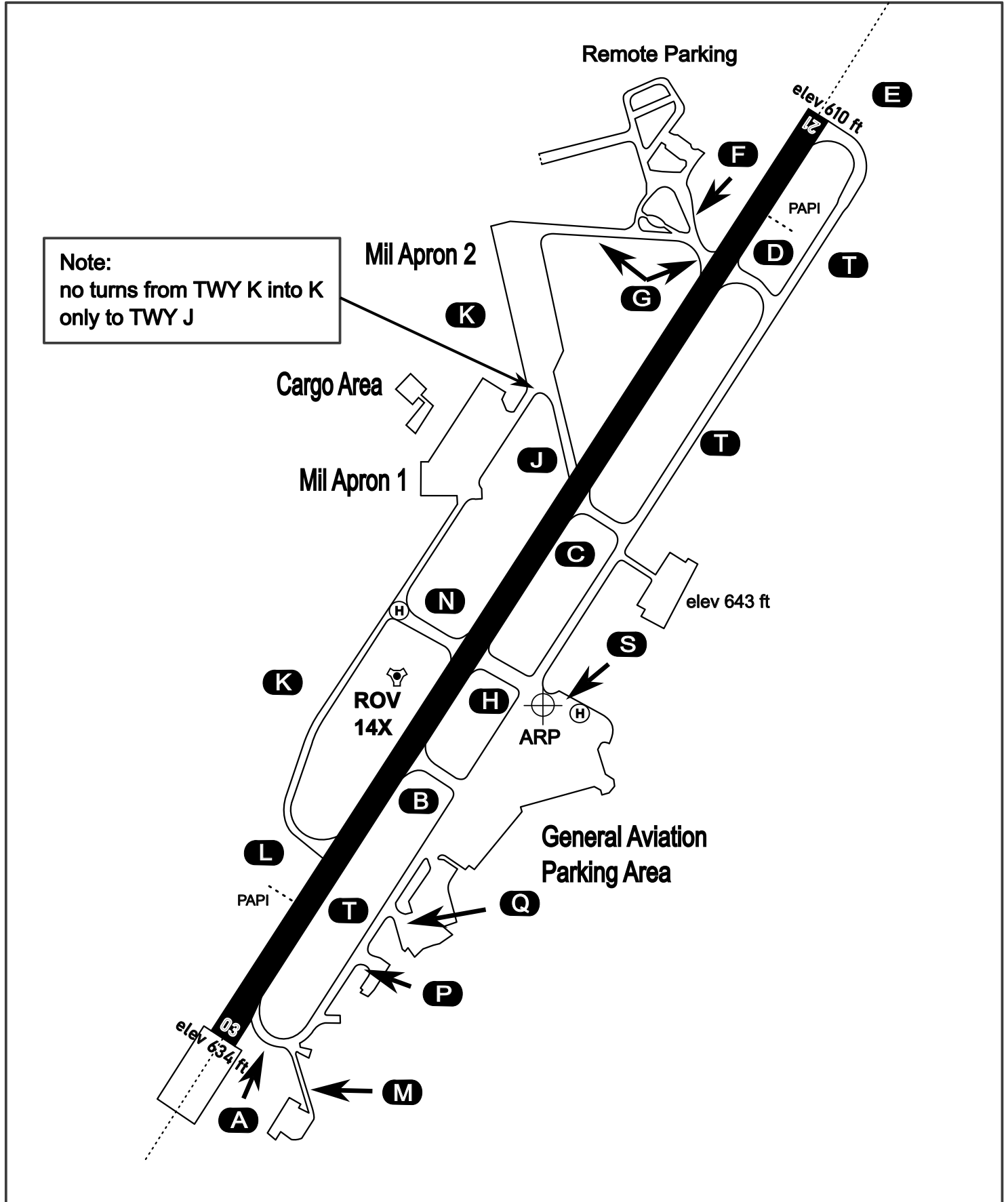
# AERODROME CHART

Rovaniemi Aerodrome

ARP N66° 33' 42" E025° 49' 51"

elev 643 ft

## ROVANIEMI, FINLAND

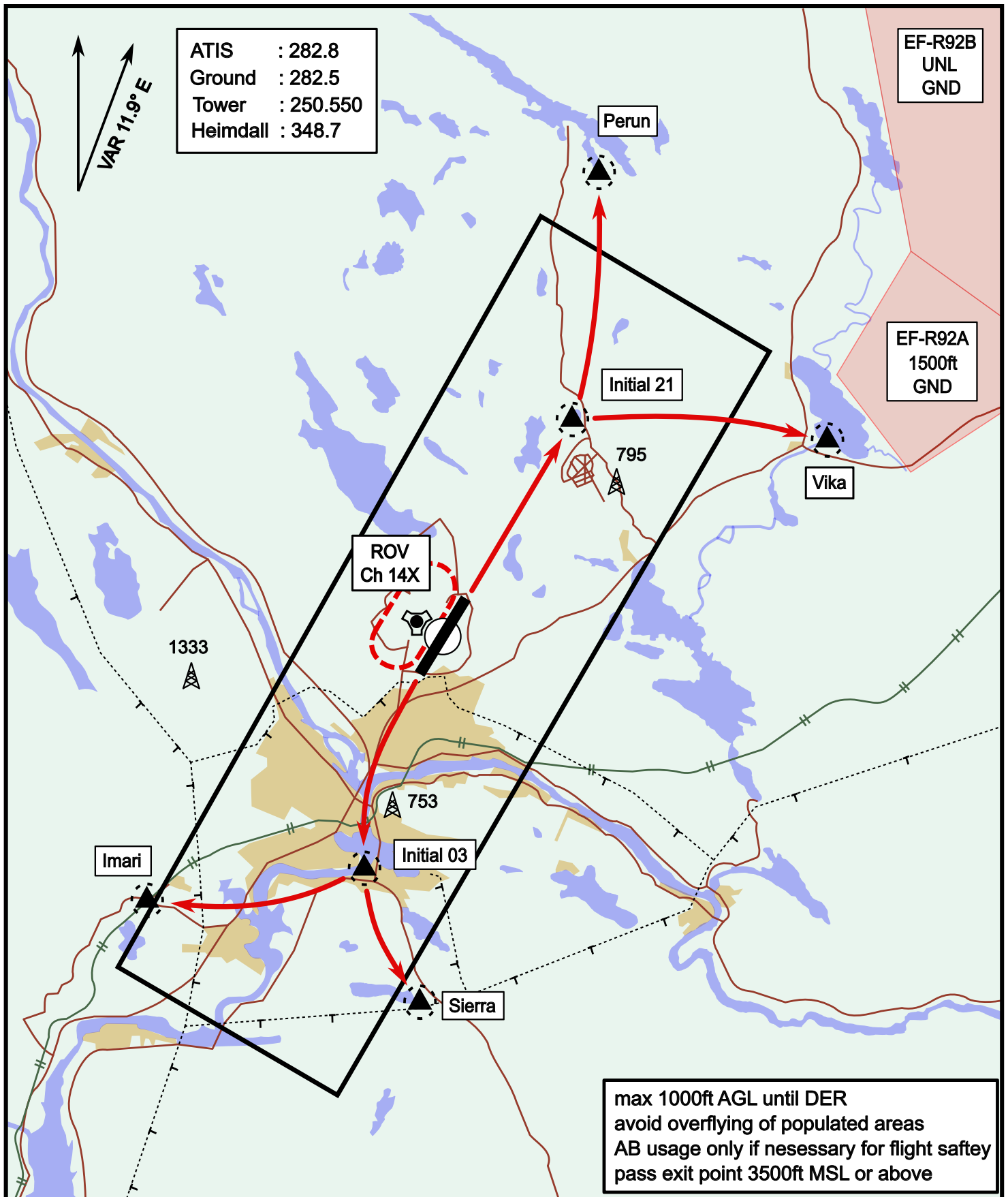


ATIS	Ground	Tower	Radar
282.800	282.500	250.550	348.700

# Visual Departure Jet

elev 643 ft

# Rovaniemi, Finland

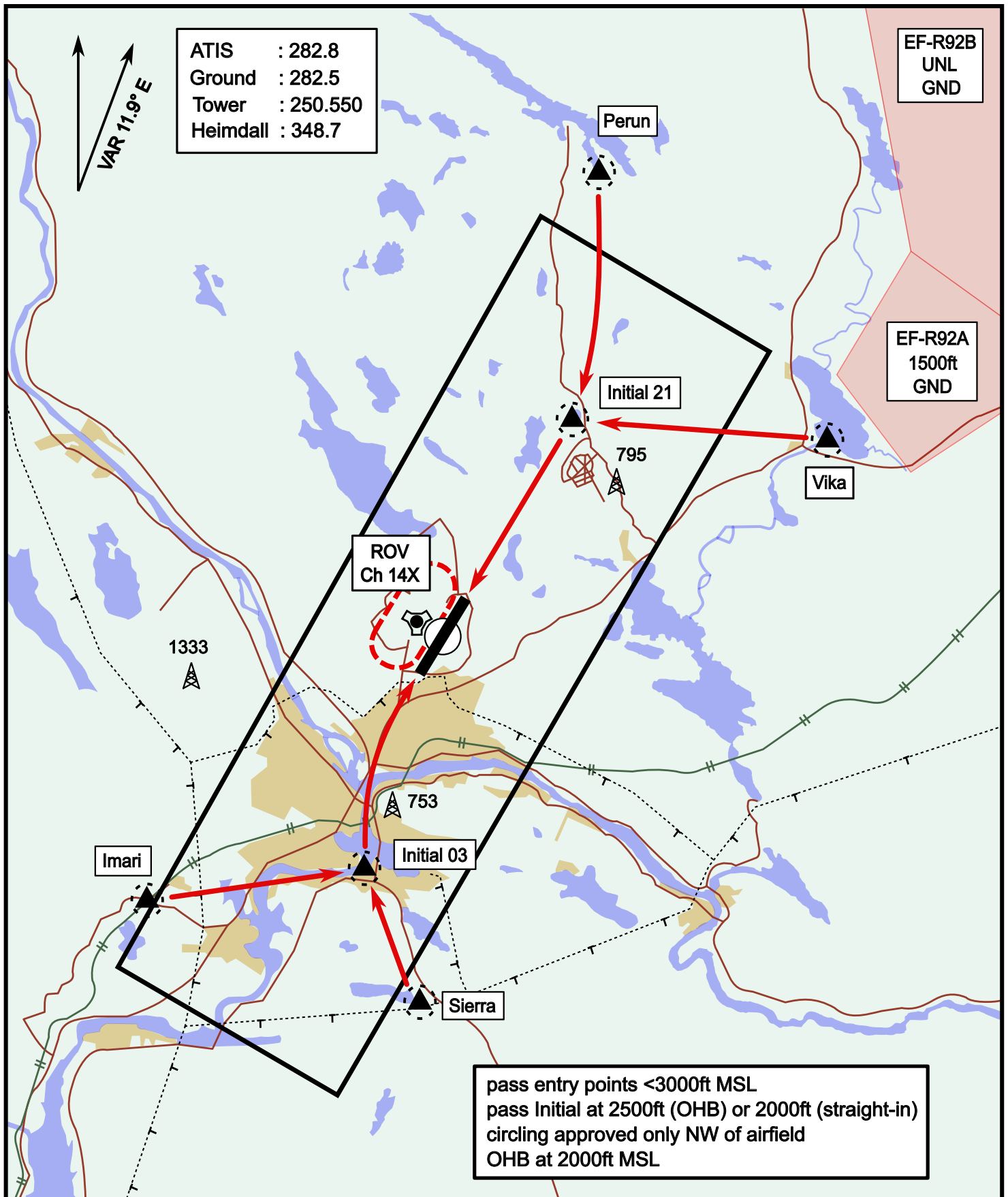


Vika	N66° 37.474 / E026° 13.557	Sierra	N66° 25.711 / E025° 46.610
Perun	N66° 44.135 / E026° 01.630	Imari	N66° 28.406 / E025° 31.291
Initial21	N66° 38.421 / E025° 58.682	Initial03	N66° 28.793 / E025° 44.105

# Visual Approach Jet

elev 643 ft

# Rovaniemi, Finland



Vika	N66° 37.474 / E026° 13.557	Sierra	N66° 25.711 / E025° 46.610
Perun	N66° 44.135 / E026° 01.630	Imari	N66° 28.406 / E025° 31.291
Initial21	N66° 38.421 / E025° 58.682	Initial03	N66° 28.793 / E025° 44.105