

MISSION DATA CARD

OPORD		Callsign		Mission		Date/Time		
3795/2025		Tiger 1		Training		052200APR25		
Task						Freq		
AO	T.ESR04.Convoy					261.15		
Departure				Recovery				
SID RWY 03				CASE III				
#	Callsign		Pilot		IFF	TCN	LSR	NET
-1	Tiger 1-1		Ghost		1011	1Y	1551	01/01

LOADOUT

A/A	2xA9X, A120C				GUN	100% HEI-T	
A/G	2xA65F, 2xG12				CHF	90	
POD	TGP				FLR	30	
TKS	2xFPU-8A				FUEL	100%	

TOLD

	Takeoff	Target	Joker	Bingo	Land
FUEL	15291			6000	20000

AIRBASES

	Name	TCN	ATIS	GND	TWR	RWY	Elev	ILS
Dep	Rovaniemi	14X	282.8	282.5	250.55	21	643	111.7
Arr	CVN-71 USS Theodore Roosevelt	71X		ICLS 7	304.0			
Div	Andoya	28X			250.6	32	46	

FLIGHTPLAN

#	Name	Navaid/Coords/DME	ALT	TOT
1	IMARI	N66 28.406 E025 31.291	3500	
2	T.ESR04.Conv ov	N65 58.503 E021 36.744	0	
3	ENOXI	N66 54.960 E021 38.780	28000	
4	NAFFI	N67 04.630 E023 11.660	28000	
5	AR.SHELL1	N67 26.792 E024 34.717	25000	
6	SEPJA	N67 27.300 E021 12.080	28000	
7	LURAP	N69 05.560 E018 15.890	20000	
8	ORTEN	N70 00.140 E014 59.450	6000	

COMMS

Radio	Usage
1	#2 (ATIS) 282.8, #3 (Ground) 282.5, #4 (Tower) 250.55, #16 (Haimdall) 348.7, #12 (Mother) 304.0
2	Inhouse 261.15
3	MIDS A: 22 / B: 44

SUPPORT**Tanker**

Callsign	TCN	Freq	ALT	TAS
SHELL 1	41Y	360.8		

Pos

AWACS

Callsign	Freq	ALT	Pos
HEIMDALL	348.7		
LOKI	347.8		

RADIO CHANNELS

#	Freq	Name
1		Flight/Squadron specific
2	282.8	Rovaniemi ATIS
3	282.5	Rovaniemi Ground
4	250.55	Rovaniemi Tower
5	320.7	Bodo ATIS
6	250.75	Bodo Tower
7	235.45	Kallax ATIS
8	250.3	Kallax Tower
9	265.0	Texaco-1 KC-135 Medium / Slow 71Y
10	319.8	Arco-1 KC-135 High / Fast 22Y
11	360.8	Shell-1 KC-135 MPRS High / Fast 41Y
12	304.0	CVN-71 Rough Rider (RRR) 71X
13	303.0	LHA-1 Tarawa (TWA) 79X
14	247.8	S-3B Mauler-1 (MAU) 64Y
15	347.8	Loki (E-2D)
16	348.7	Heimdall (E-3A)
17	242.17	ESR02 - CAS Range Operator
18	34.7	ESR02 - JTAC Odin
19	270.5	Blue
20	270.75	Red

RAMROD

0	1	2	3	4	5	6	7	8	9
D	E	B	O	N	A	I	R	L	Y

KTC 1400 C

	0	1	2	3	4	5	6	7	8	9
A	HYQE	VRS	TAK	DU	IO	WJN	GL	FP	CM	BX
B	OLUI	FBR	JTQ	YA	XC	VSM	KG	HW	DN	EP
C	DXIK	LAE	CWF	GN	RP	MOY	VB	QH	UT	SJ
D	DSAR	VBN	GCJ	YF	HI	MTP	WE	XU	LK	OQ
E	PDCM	KRV	SQE	LO	GB	FXW	YI	TJ	AU	HN
F	CWQR	NAL	GKI	PD	EY	UHM	SB	OX	VF	JT
G	ACSN	GLF	IWD	MJ	QH	VPU	OB	KE	RX	TY
H	FNLM	UJH	TWR	CV	XD	OEK	PG	YI	QA	SB
I	PRGQ	TXW	ISO	HK	DE	FBA	VJ	YU	CN	LM
J	RUNT	PVA	BWY	FK	JM	HXD	LE	SQ	IG	OC
K	NMRT	LYG	ICK	QB	XS	UJO	HW	FV	AP	DE
L	IROK	LXQ	GNC	VD	BA	UYT	WP	HJ	MF	ES
M	FLQY	WSH	PUN	DJ	OB	TCE	VG	IM	KX	AR
N	HOJM	EKW	UNR	SP	VT	YQB	AF	DG	IX	CL
O	DJGX	CYM	PRU	FS	BT	OVH	LQ	EA	IN	WK
P	XENO	RDS	CPG	AU	YL	MJV	WB	IH	TQ	KF
Q	DTIP	ENH	KGV	UM	OJ	CXY	RL	WA	BQ	SF
R	YAQV	SPM	HIE	TW	RJ	KCX	UD	GN	OF	BL
S	ALCP	TSM	YEN	OB	XD	GUJ	HV	KF	IQ	WR
T	PXBC	UWN	TQK	HJ	FM	IEA	GO	VD	LR	YS
U	OFIR	WMA	QVN	TD	XP	LKB	CJ	HS	GY	EU
V	SEKG	MUH	YJC	OV	RN	XPQ	FW	LB	TI	AD
W	MYEW	KBP	LTG	VX	AR	ICO	SF	NJ	HQ	DU
X	ITVM	PHC	SQE	GU	KX	RWL	DY	FN	BJ	AO
Y	QUBW	YCV	PEJ	DF	RA	LOH	MN	IS	GX	KT

NAVAIDS

Id	Name	Channel	Position	Elevation
BOO	Bodo	45	N67 15.838 E014 20.046	43
BNK	Banak	47	N70 03.937 E024 58.181	17
OYA	Andoya	28	N69 17.175 E016 08.658	19

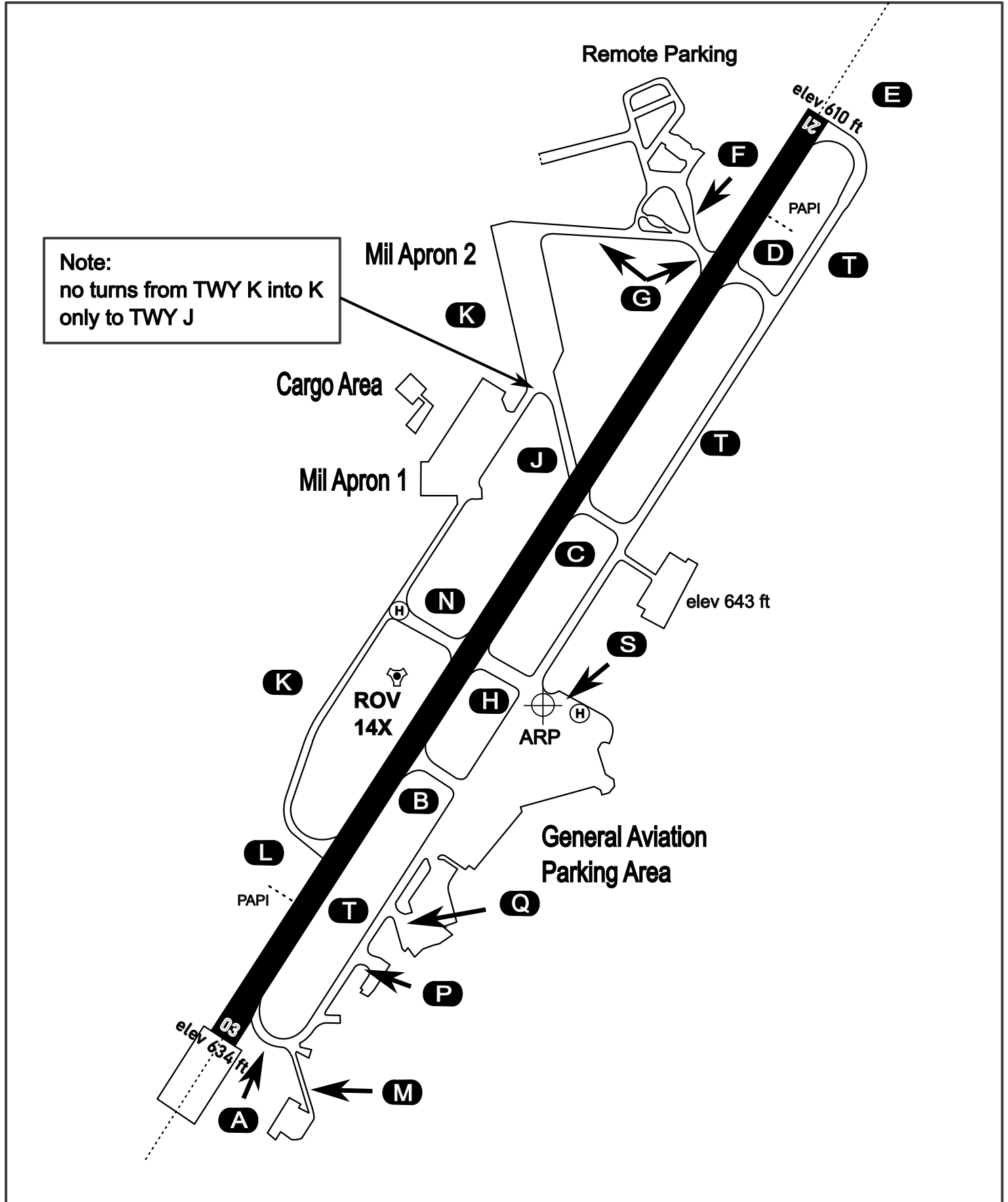
AERODROME CHART

Rovaniemi Aerodrome

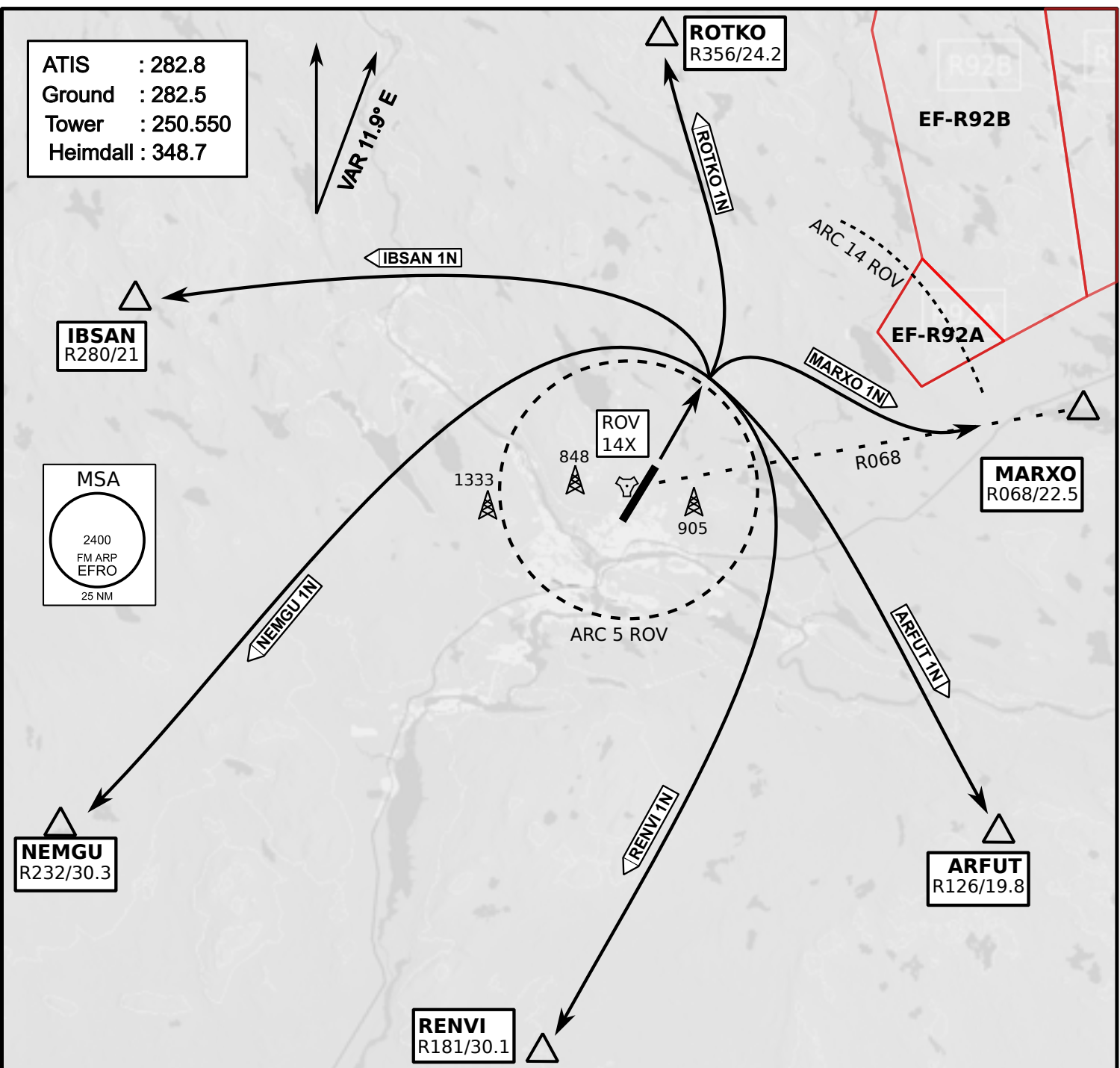
ARP N66° 33' 42" E025° 49' 51"

elev 643 ft

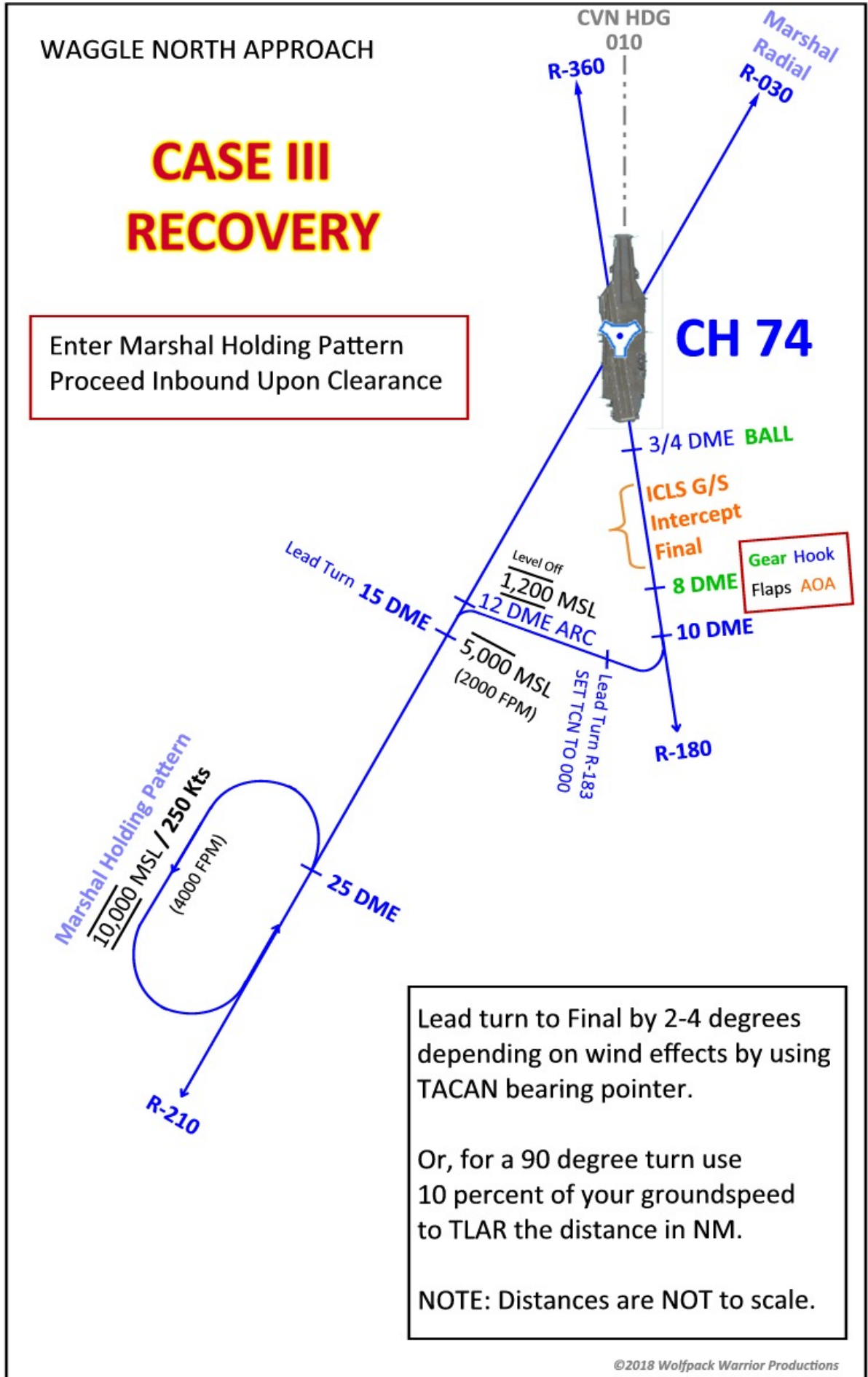
ROVANIEMI, FINLAND

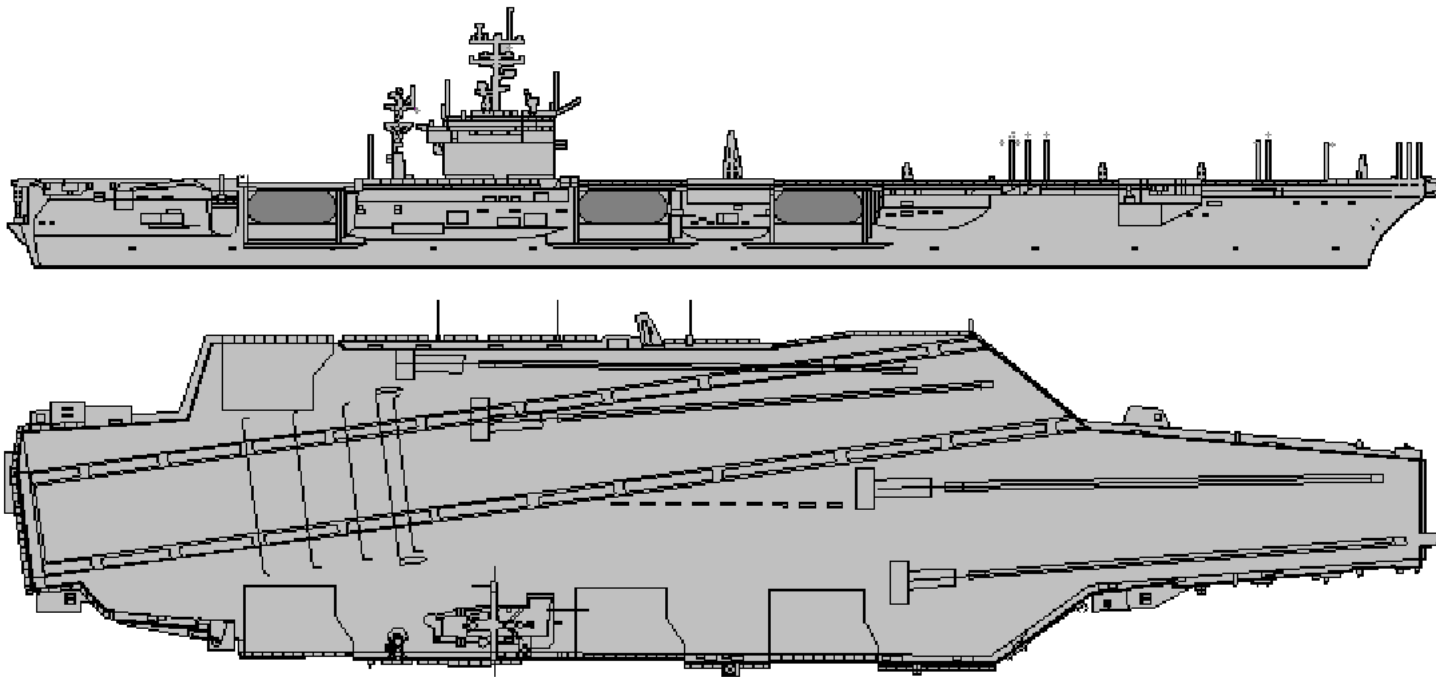


ATIS	Ground	Tower	Radar
282.800	282.500	250.550	348.700



- Climb on Rwy heading to min A2000ft
- when passing A2000ft OR 5 DME ROV (whichever is later) turn to exit point
- Stay outside ARC 5 ROV
- if EF-R92B is active :
intercept R068 ROV inside 14 DME ROV to MARXO
- AB usage only if necessary for flight safety





NOT AVAILABLE

NOT AVAILABLE