

MISSION DATA CARD

OPORD		Callsign		Mission		Date/Time		
3792/2025		T-Rex 1		Training		312000MAR25		
Task						Freq		
AO						135.15		
Departure				Recovery				
SID RWY 03				ILS RWY 21				
#	Callsign		Pilot		IFF	TCN	LSR	NET
-1	T-Rex 1-1		Stoner		1411	1Y	1621	20/01

LOADOUT

A/A	2xA9L				GUN	100% CM	
A/G	2xG38, 7M156				CHF	0	
POD	TGP, A184L				FLR	480	
TKS					FUEL	80%	

TOLD

	Takeoff	Target	Joker	Bingo	Land
FUEL	8869				

AIRBASES

	Name	TCN	ATIS	GND	TWR	RWY	Elev	ILS
Dep	Rovaniemi	14X	282.8	282.5	250.55	21	643	111.7
Arr	Rovaniemi	14X	282.8	282.5	250.55	21	643	111.7

FLIGHTPLAN

#	Name	Navaid/Coords/DME	ALT	TOT
1	RVNInit03	N66 28.793 E025 44.105	3500	
2	IMARI		3000	
3	T.ESR04.Cros sroads	N65 50.819 E021 43.955	15000	
4	PERUN		3500	
5	RVNInit21	N66 38.642 E025 58.682	3500	

COMMS

Radio	Usage
1	135.15
2	2, 4, 16, 2, 4
3	32,00

OTHER FLIGHTS

Callsign	Mission	Airframe	Freq	TCN	Grpld	Laser
Rattler 1	Training	4x AH-64D	133.5	1/64		125X
AO	R92D	Task	Coop-Attack			
Monster 1	Training	1x A-10C	132.15	1/64	21	161X
AO		Task				
Nazgul 6	Training	4x F-15E	262.45	1/64		156X
AO	ENR04	Task	Toss/Loft Bombing Training			
Hammer 1	Training	1x A-10C	133.25	1/64	19	163X
AO		Task				
Beast 1	Training	1x A-10C	134.25	1/64	18	163X
AO		Task				

RADIO CHANNELS

#	Freq	Name
1		Flight/Squadron specific
2	282.8	Rovaniemi ATIS
3	282.5	Rovaniemi Ground
4	250.55	Rovaniemi Tower
5	320.7	Bodo ATIS
6	250.75	Bodo Tower
7	235.45	Kallax ATIS
8	250.3	Kallax Tower
9	265.0	Texaco-1 KC-135 Medium / Slow 71Y
10	319.8	Arco-1 KC-135 High / Fast 22Y
11	360.8	Shell-1 KC-135 MPRS High / Fast 41Y
12	304.0	CVN-71 Rough Rider (RRR) 71X
13	303.0	LHA-1 Tarawa (TWA) 79X
14	247.8	S-3B Mauler-1 (MAU) 64Y
15	347.8	Loki (E-2D)
16	348.7	Heimdall (E-3A)
17	242.17	ESR02 - CAS Range Operator
18	34.7	ESR02 - JTAC Odin
19	270.5	Blue
20	270.75	Red

RAMROD

0	1	2	3	4	5	6	7	8	9
M	A	T	C	H	B	O	X	E	S

KTC 1400 C

	0	1	2	3	4	5	6	7	8	9
A	UKAN	GRX	ICB	ME	QS	FWY	PO	LV	HT	JD
B	XCGE	BIQ	NKY	DM	TA	UPJ	RL	SW	OF	HV
C	OMUA	TNQ	IJF	RP	BV	CYH	SD	WG	LK	XE
D	PVFN	YLE	TQO	BH	KW	XDR	GJ	UC	SI	MA
E	OCAN	FTM	WIL	PH	BS	GXV	UY	RQ	KJ	ED
F	YIAE	LOUD	JBW	KV	LN	RXQ	GT	CM	PF	SH
G	BPMA	YHD	SOK	NG	WV	QUR	TL	JE	FI	CX
H	LDUW	OGM	SJQ	EY	HT	AVR	PX	IC	KF	NB
I	WRUP	XMH	SYN	QO	GK	LFV	AT	CB	JI	DE
J	TFEY	DSJ	BCX	MI	VN	QWL	GK	HO	UP	RA
K	DIRG	OVU	EFN	LT	MX	BHS	JA	WY	CK	PQ
L	OCRV	DLM	PJG	FN	IK	WBA	ES	HY	UX	TQ
M	NLQH	MKS	ETI	WF	CY	DGR	AO	BU	VJ	PX
N	IXEK	VCT	UJY	DA	GM	WQH	NR	OB	LP	SF
O	AFKM	JIV	YGH	PB	NO	QTU	WL	RD	EC	XS
P	WCNV	EXH	OMP	JF	GU	TSL	AY	RB	QI	KD
Q	PEAX	LOU	MQH	FY	RC	JVT	ND	BK	GW	IS
R	HBMO	KJN	QCD	GU	WP	XLF	SR	YT	VI	AE
S	EULG	KFR	PVQ	IJ	WD	CMA	YB	XN	SO	TH
T	KGJO	HVR	NMU	AD	LX	QYE	CI	FP	SB	WT
U	XIEB	RSG	UHD	QT	NA	OPJ	WF	KC	VY	ML
V	JSQT	ERF	YHX	LI	WO	PAN	VB	KU	CM	GD
W	PBRC	HDS	YUL	IX	VA	TJQ	GW	EF	ON	MK
X	HMIP	CND	GJW	KT	XR	VBL	YO	AS	EQ	UF
Y	JRBV	NQL	EIP	MY	DA	SCO	XT	FK	WG	UH

NAVAIDS

Id	Name	Channel	Position	Elevation
BOO	Bodo	45	N67 15.838 E014 20.046	43
BNK	Banak	47	N70 03.937 E024 58.181	17
OYA	Andoya	28	N69 17.175 E016 08.658	19

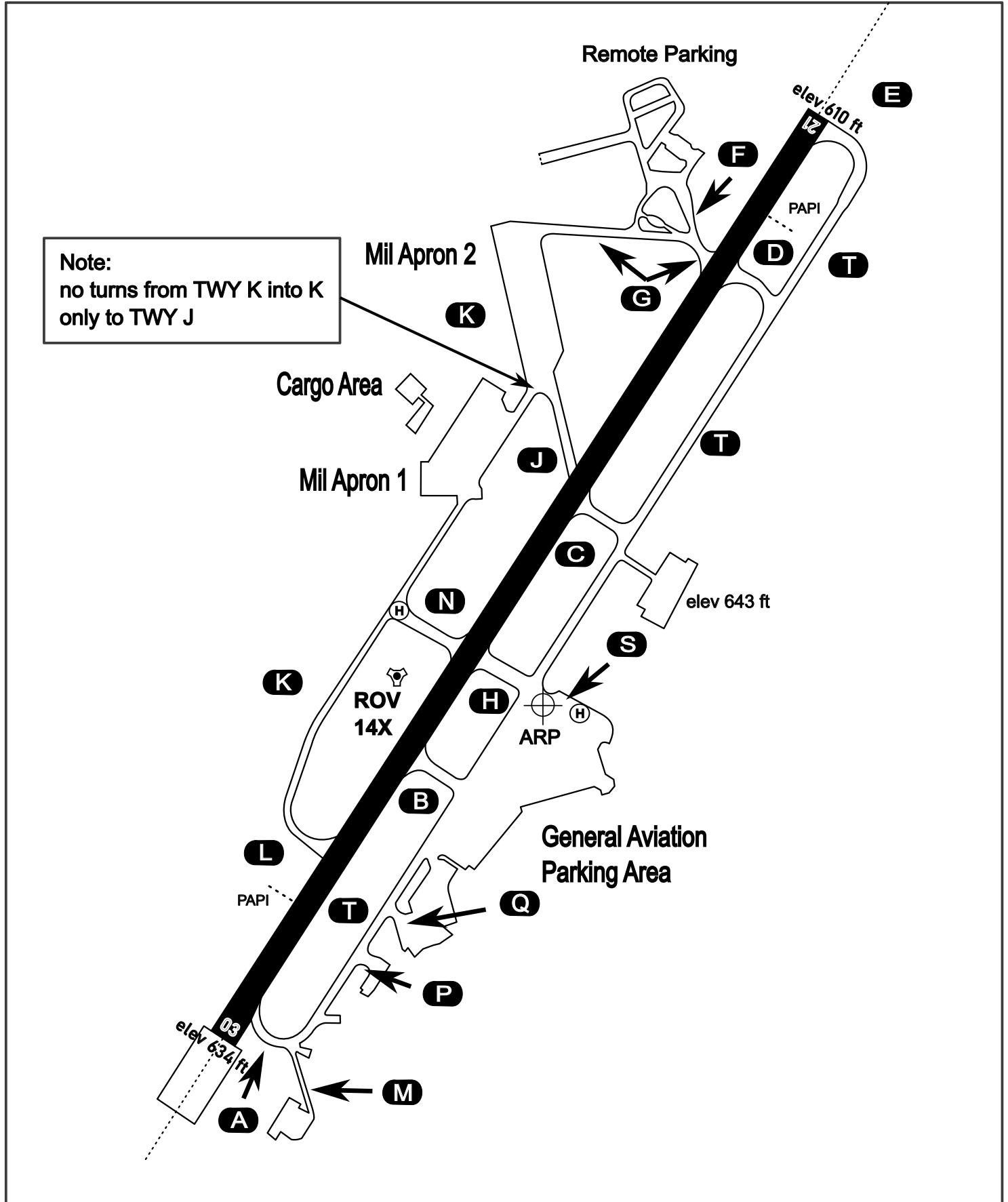
AERODROME CHART

Rovaniemi Aerodrome

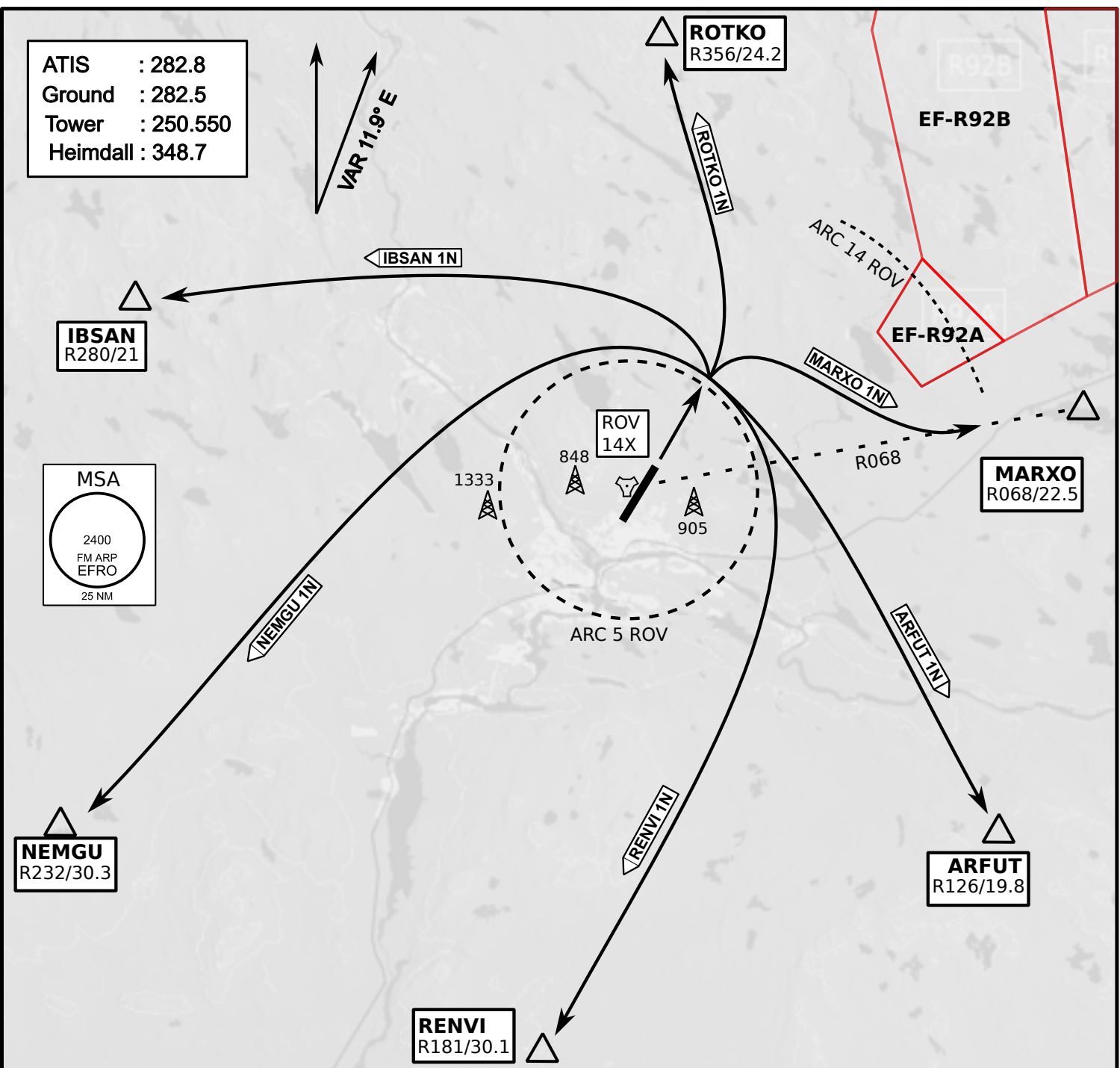
ARP N66° 33' 42" E025° 49' 51"

elev 643 ft

ROVANIEMI, FINLAND



ATIS	Ground	Tower	Radar
282.800	282.500	250.550	348.700



- Climb on Rwy heading to min A2000ft
- when passing A2000ft OR 5 DME ROV (whichever is later) turn to exit point
- Stay outside ARC 5 ROV
- if EF-R92B is active :
intercept R068 ROV inside 14 DME ROV to MARXO
- AB usage only if necessary for flight safety

