

MISSION DATA CARD

OPORD		Callsign		Mission		Date/Time		
3783/2025		Nazgul 6		Training		272000MAR25		
Task	low level bombing					Freq		
AO	ESR04					262.45		
Departure				Recovery				
SID RWY 21				ILS RWY 21				
#	Callsign		Pilot		IFF	TCN	LSR	NET
-1	Nazgul 6-1		Tank/Razorback		1161	1Y	1561	
-2	Nazgul 6-2		Repsus/UTA		1162	64Y	1562	

LOADOUT

A/A	2xA120C, 2xA9M				GUN	100% SAPHEI	
A/G	4xM82SE				CHF	120	
POD	TGT, NAV				FLR	60	
TKS					FUEL	100%	

TOLD

	Takeoff	Target	Joker	Bingo	Land
FUEL	22588				

AIRBASES

	Name	TCN	ATIS	GND	TWR	RWY	Elev	ILS
Dep	Rovaniemi	14X	282.8	282.5	250.55	21	643	111.7
Arr	Rovaniemi	14X	282.8	282.5	250.55	21	643	111.7
Div	Kallax		235.45		250.3	32	66	109.9

FLIGHTPLAN

#	Name	Navaid/Coords/DME	ALT	TOT
1	IBSAN	N66 42.500 E025 01.083	5000	
2	NAFFI	N67 04.630 E023 11.660	15000	
3	ENOXI	N66 54.960 E021 38.780	15000	
4	ITVAV	N66 44.630 E019 56.760	15000	
5	T.ESR04.HQ	N65 48.554 E021 41.706	500	
6	T.ESR04.Cros sroads	N65 50.819 E021 43.955	500	
7	REIVI	N66 04.567 E025 31.900	15000	
8	ARFUT	N66 18.988 E026 21.957	15000	
9	NIPAK	N66 42.350 E026 06.083	2500	

NOTES

Range ESR04
Inbound from NW via ITVAV
low level using TF Radar

Egress --> south for deconfliction ESR03

Target1: HQ
Coordinates: N6548.554 E02141.706

Target2: Crossroads
Coordinates: N65 50.819 E02143.955

SUPPORT**AWACS**

Callsign

Freq

ALT

Pos

HEIMDALL

348.7

OTHER FLIGHTS

Callsign	Mission	Airframe	Freq	TCN	Grpld	Laser
Tiger 1	Escort	2x F/A-18C	261.15	1/64		155X
AO	ENR04	Task	PKG LEAD / STRIKE ESCORT			
Rattler 1	Training	4x AH-64D	133.5	1/64		125X
AO	R92D	Task	Coop-Attack			
Raptor 1	Training	4x F-16C	134.0	1/64		161X
AO	ESR-03	Task	Training S&D AGM-65			
Raptor 2	Training	4x F-16C	134.5	1/64		162X
AO	ESR-03	Task	Training S&D GBU-12			
Monster 1	Training	4x A-10C	132.15	1/64	21	161X
AO	EFR92B	Task	ILLUM. FLARES + GUN			
T-Rex 1	Training	4x A-10C	132.25	1/64	25	165X
AO	EFR92B	Task	ILLUM. FLARES + GUN			
Panther 5	Strike	4x F/A-18C	261.15	1/64		155X
AO	ENR04	Task	LOW LEVEL STRIKE			

RADIO CHANNELS

#	Freq	Name
1		Flight/Squadron specific
2	282.8	Rovaniemi ATIS
3	282.5	Rovaniemi Ground
4	250.55	Rovaniemi Tower
5	320.7	Bodo ATIS
6	250.75	Bodo Tower
7	235.45	Kallax ATIS
8	250.3	Kallax Tower
9	265.0	Texaco-1 KC-135 Medium / Slow 71Y
10	319.8	Arco-1 KC-135 High / Fast 22Y
11	360.8	Shell-1 KC-135 MPRS High / Fast 41Y
12	304.0	CVN-71 Rough Rider (RRR) 71X
13	303.0	LHA-1 Tarawa (TWA) 79X
14	247.8	S-3B Mauler-1 (MAU) 64Y
15	347.8	Loki (E-2D)
16	348.7	Heimdall (E-3A)
17	242.17	ESR02 - CAS Range Operator
18	34.7	ESR02 - JTAC Odin
19	270.5	Blue
20	270.75	Red

RAMROD

0	1	2	3	4	5	6	7	8	9
C	O	N	F	U	S	E	D	L	Y

KTC 1400 C

	0	1	2	3	4	5	6	7	8	9
A	FAYN	RUH	CIG	WL	VJ	QSB	DP	XT	KM	OE
B	OUHL	PSV	RJA	TY	BF	GDI	QW	KN	EC	MX
C	KMQO	YET	LCA	HS	RD	WPX	BN	UI	FV	JG
D	SLFE	XOV	HWC	KM	YD	GRQ	TI	BA	JU	PN
E	EKSD	RLI	FYJ	QP	UT	HGO	WC	XA	MB	VN
F	YAFX	TBE	VDJ	PN	OI	KHQ	GM	SL	WR	UC
G	UPMY	FWR	LEQ	HD	SN	KVT	JO	CX	GI	BA
H	BYOH	LSI	RPD	WG	AF	MEV	CN	QU	JX	TK
I	RCBP	DQE	ITG	WU	FS	NVK	JY	AX	MH	OL
J	GUNC	MLO	TQW	RS	KE	XPA	YD	HJ	BF	VI
K	HMNC	PKF	STG	QR	LO	XEY	VB	IW	DJ	UA
L	HLIX	PVB	UEC	RY	QO	GDA	NM	FJ	TW	KS
M	SQID	TEH	OYR	XA	WC	UPF	VJ	MK	LN	BG
N	NLCW	KRP	ISH	EX	GJ	UAF	MT	OY	VB	QD
O	HIGA	WRC	LSP	ET	BO	KJU	VM	DX	FQ	YN
P	ILNP	YEW	DJR	OS	XH	UFQ	KV	GT	MA	BC
Q	JUJR	FHX	IOT	EB	PK	GAC	VD	WN	MS	QL
R	WXVT	HEB	KUR	FJ	SD	YLA	GP	NC	MI	OQ
S	YTXE	GWK	POA	RD	IF	VCB	MQ	NH	JU	SL
T	UMDI	EPK	GVT	BR	NX	YFC	HJ	OA	QS	LW
U	BFCA	QUT	XID	MK	EY	GVS	OP	NJ	RL	WH
V	BMTY	GNS	WEX	RU	KL	FPO	CI	DJ	HQ	AV
W	BGPV	EXN	KID	OM	UJ	TRH	CY	LA	WQ	FS
X	XAGY	NCB	QKO	ML	RT	IPD	VE	FW	US	JH
Y	VGLR	KQB	YFT	HA	JI	MCP	OD	SX	UW	NE

NAVAIDS

Id	Name	Channel	Position	Elevation
BOO	Bodo	45	N67 15.838 E014 20.046	43
BNK	Banak	47	N70 03.937 E024 58.181	17
OYA	Andoya	28	N69 17.175 E016 08.658	19

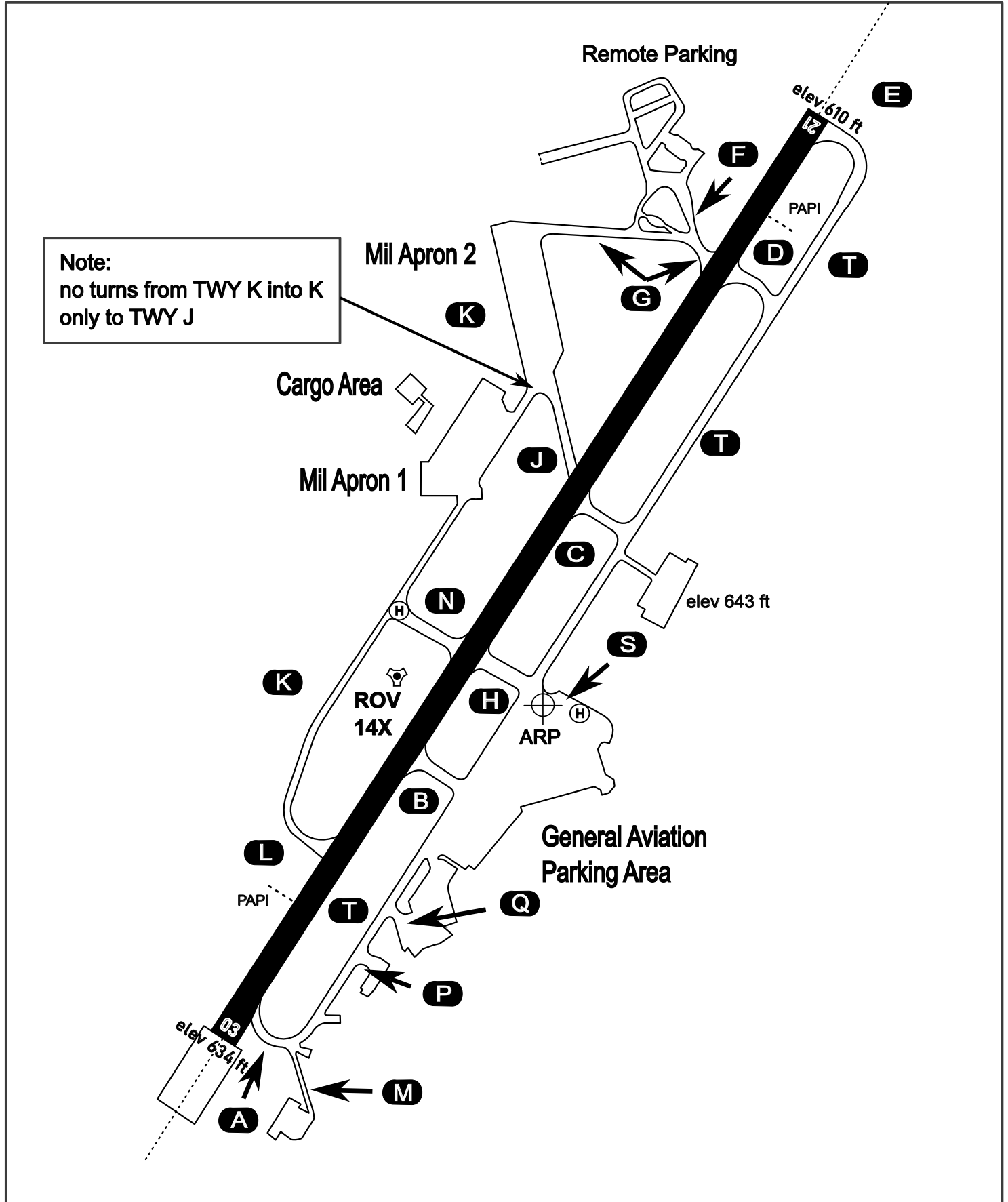
AERODROME CHART

Rovaniemi Aerodrome

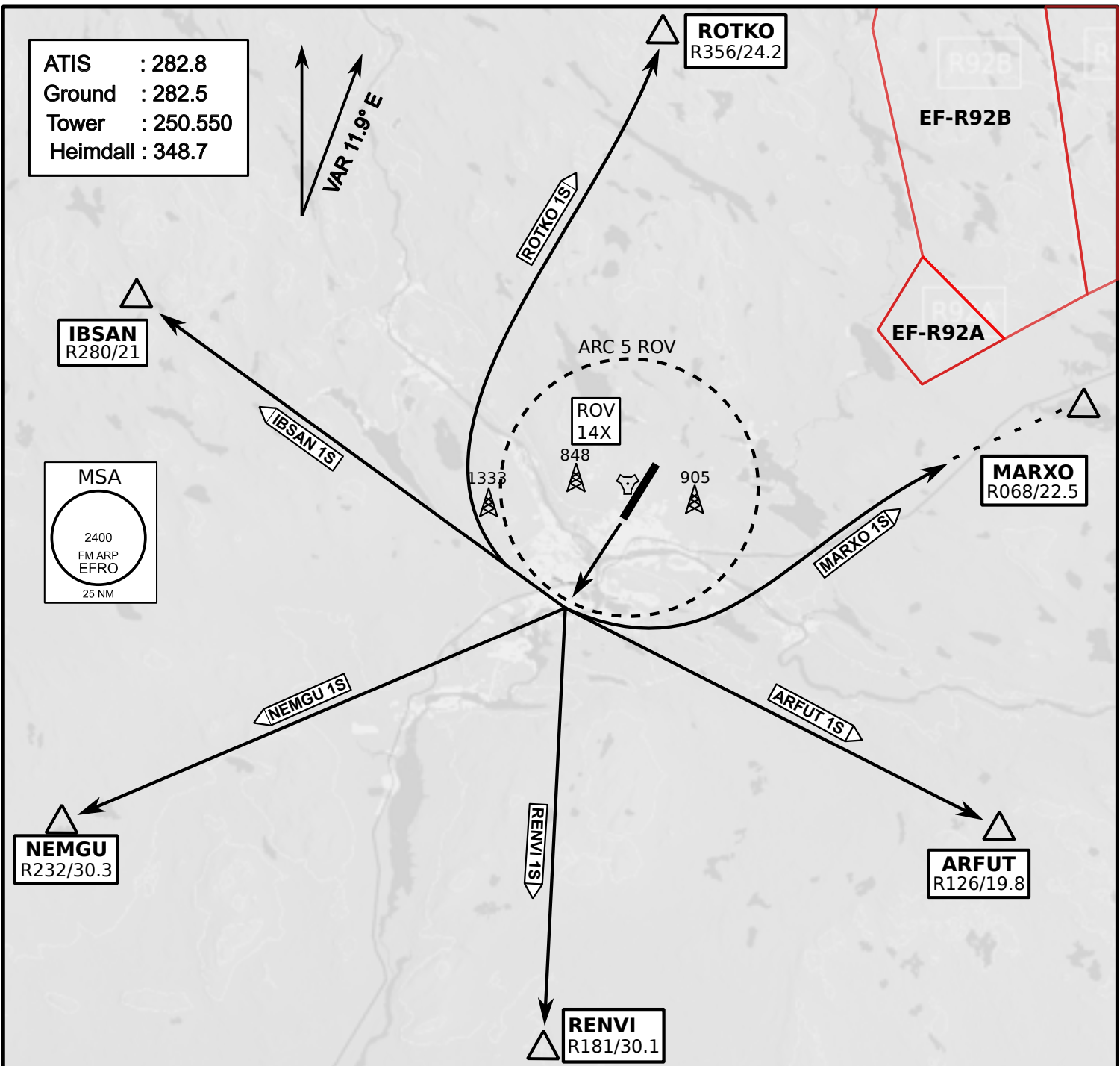
ARP N66° 33' 42" E025° 49' 51"

elev 643 ft

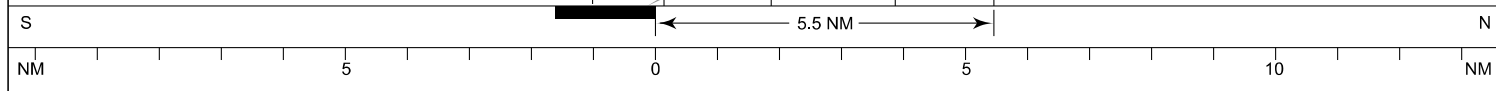
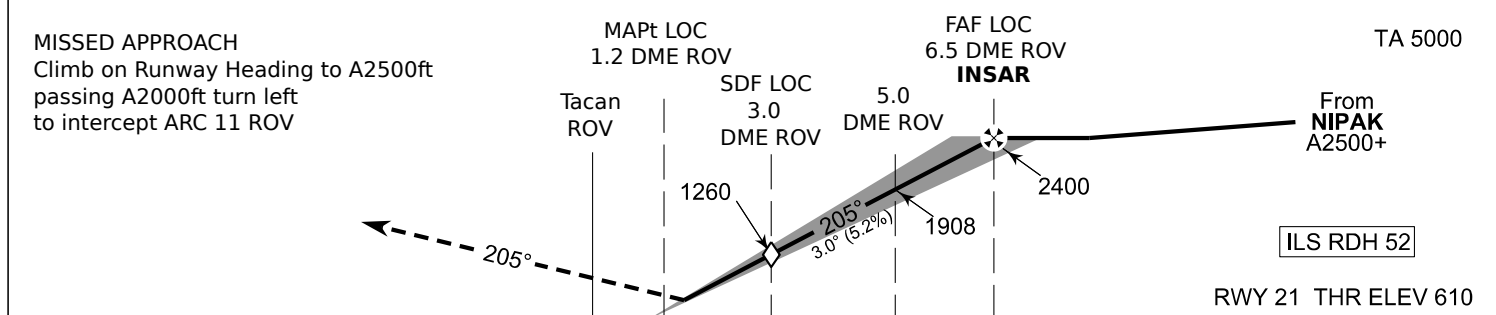
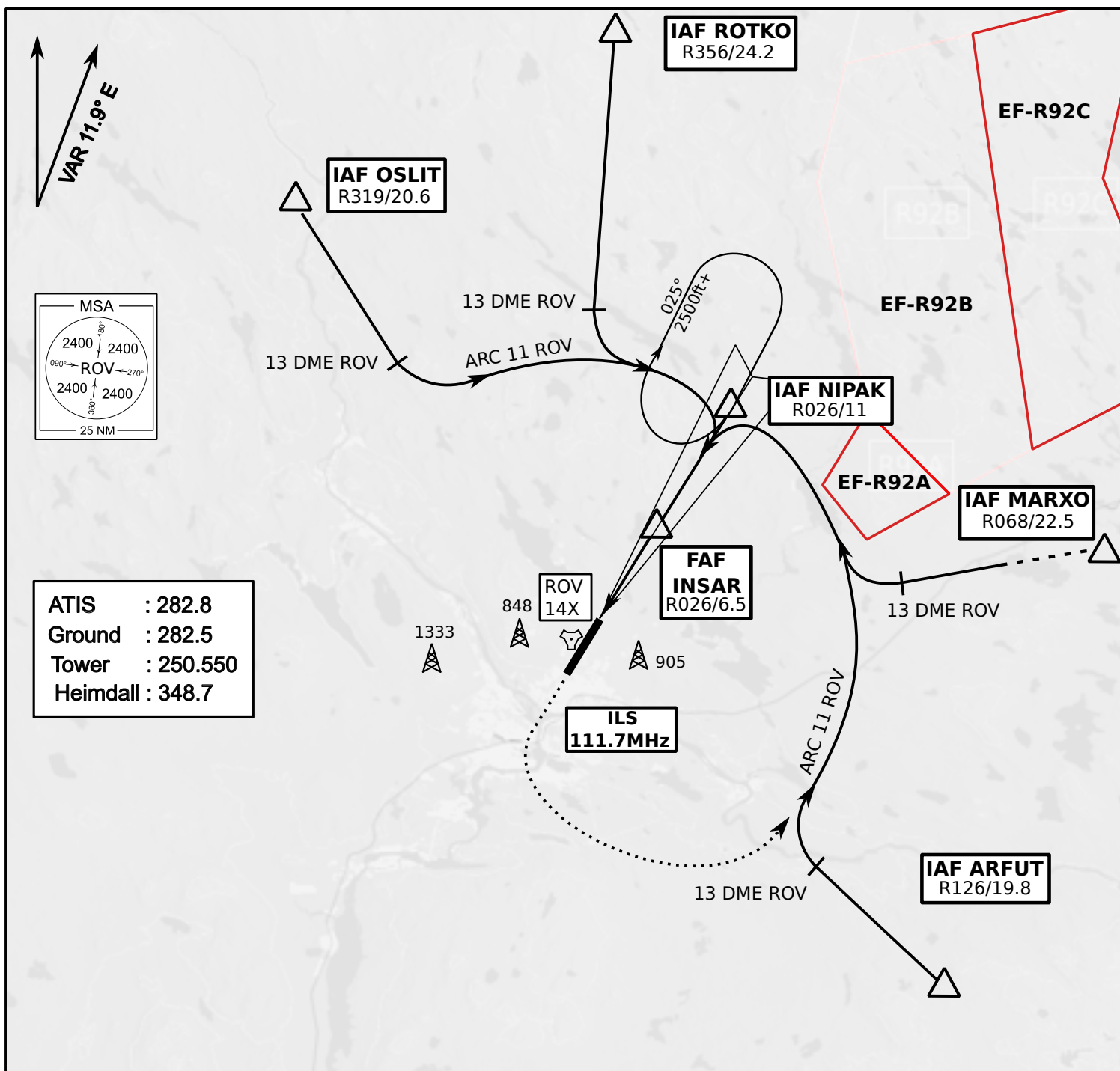
ROVANIEMI, FINLAND



ATIS	Ground	Tower	Radar
282.800	282.500	250.550	348.700



- Climb on Rwy heading to min A2000ft
- when passing A2000ft OR 5 DME ROV (whichever is later) turn direct exit point
- Stay outside ARC 5 ROV
- AB usage only if necessary for flight safety



OCA (H)	A	B	C	D
ILS CAT I	773 (164)	784 (175)	795 (186)	809 (200)
LOC	930 (320)			
LOC WO SDF	1260 (650)			
Circling	1120 (470)	1150 (510)	1300 (660)	1340 (690)

	kt	90	100	120	140	160
FAF - MAPt 5.4 NM	min:sec	3:36	3:14	2:42	2:19	2:01
Rate of descent	ft/min	480	530	640	740	850

Timing not authorized for defining the MAPt

NOT AVAILABLE

NOT AVAILABLE