

**MISSION DATA CARD**

OPORD		Callsign		Mission		Date/Time		
3782/2025		Raptor 2		Training		272030MAR25		
Task	Training S&D GBU-12					Freq		
AO	ESR-03					134.5		
Departure				Recovery				
VFR Departure				VFR Approach				
#	Callsign		Pilot		IFF	TCN	LSR	NET
-1	Raptor 2-1		Jinx		1621	1Y	1621	
-2	Raptor 2-2		Meteor		1622	64Y	1622	
-3	Raptor 2-3		Beathovenz		1623	64X	1623	
-4	Raptor 2-4		Cyking		1624	1X	1624	

**LOADOUT**

A/A	2xA120B, 2xA9L				GUN	100% SAPHEI
A/G	4xG12				CHF	60
POD	TGP				FLR	60
TKS	2xFT300				FUEL	100%

**TOLD**

	Takeoff	Target	Joker	Bingo	Land
FUEL	11169	9000	3500	2500	1500

**AIRBASES**

	Name	TCN	ATIS	GND	TWR	RWY	Elev	ILS
Dep	Rovaniemi	14X	282.8	282.5	250.55	21	643	111.7
Arr	Rovaniemi	14X	282.8	282.5	250.55	21	643	111.7

**FLIGHTPLAN**

#	Name	Navaid/Coords/DME	ALT	TOT
1	RVNInit21	N66 38.642 E025 58.682	2500	
2	PERUN	N66 44.135 E026 01.630	3500	
3	NEMGU	N66 20.400 E024 41.650	19000	
4	Holding Kukkola	N65 57.661 E024	19000	
5	T-ESR03-08	N65 59.779 E023 16.320	266	
6	T-ESR03-06	N66 14.116 E022 57.207	119	
7	NEMGU	N66 20.400 E024 41.650	19000	
8	IMARI	N66 28.406 E025 31.291	3000	
9	RVNInit03	N66 28.793 E025 44.105	2000	

**COMMS**

Radio	Usage
1	2
2	3
3	4
4	16

## NOTES

#6 8 IFV

#8 8 APC, 2 AAA

**SUPPORT****Tanker**

Callsign	TCN	Freq	ALT	TAS
ARCO 1	22Y	319.8		
	Pos			

**AWACS**

Callsign	Freq	ALT	Pos
HEIMDALL	348.7		

## OTHER FLIGHTS

Callsign	Mission	Airframe	Freq	TCN	Grpld	Laser
Tiger 1	Escort	2x F/A-18C	261.15	1/64		155X
AO	ENR04	Task	PKG LEAD / STRIKE ESCORT			
Rattler 1	Training	4x AH-64D	133.5	1/64		125X
AO	R92D	Task	Coop-Attack			
Raptor 1	Training	4x F-16C	134.0	1/64		161X
AO	ESR-03	Task	Training S&D AGM-65			
Nazgul 6	Training	4x F-15E	262.45	1/64		156X
AO	ESR04	Task	low level bombing			
Monster 1	Training	4x A-10C	132.15	1/64	21	161X
AO	EFR92B	Task	ILLUM. FLARES + GUN			
T-Rex 1	Training	4x A-10C	132.25	1/64	25	165X
AO	EFR92B	Task	ILLUM. FLARES + GUN			
Panther 5	Strike	4x F/A-18C	261.15	1/64		155X
AO	ENR04	Task	LOW LEVEL STRIKE			

## RADIO CHANNELS

#	Freq	Name
1		Flight/Squadron specific
2	282.8	Rovaniemi ATIS
3	282.5	Rovaniemi Ground
4	250.55	Rovaniemi Tower
5	320.7	Bodo ATIS
6	250.75	Bodo Tower
7	235.45	Kallax ATIS
8	250.3	Kallax Tower
9	265.0	Texaco-1   KC-135   Medium / Slow   71Y
10	319.8	Arco-1   KC-135   High / Fast   22Y
11	360.8	Shell-1   KC-135 MPRS   High / Fast   41Y
12	304.0	CVN-71 Rough Rider (RRR)   71X
13	303.0	LHA-1 Tarawa (TWA)   79X
14	247.8	S-3B Mauler-1 (MAU)  64Y
15	347.8	Loki (E-2D)
16	348.7	Heimdall (E-3A)
17	242.17	ESR02 - CAS Range Operator
18	34.7	ESR02 - JTAC Odin
19	270.5	Blue
20	270.75	Red

**RAMROD**

0	1	2	3	4	5	6	7	8	9
C	O	N	F	U	S	E	D	L	Y

**KTC 1400 C**

	0	1	2	3	4	5	6	7	8	9
A	FAYN	RUH	CIG	WL	VJ	QSB	DP	XT	KM	OE
B	OUHL	PSV	RJA	TY	BF	GDI	QW	KN	EC	MX
C	KMQO	YET	LCA	HS	RD	WPX	BN	UI	FV	JG
D	SLFE	XOV	HWC	KM	YD	GRQ	TI	BA	JU	PN
E	EKSD	RLI	FYJ	QP	UT	HGO	WC	XA	MB	VN
F	YAFX	TBE	VDJ	PN	OI	KHQ	GM	SL	WR	UC
G	UPMY	FWR	LEQ	HD	SN	KVT	JO	CX	GI	BA
H	BYOH	LSI	RPD	WG	AF	MEV	CN	QU	JX	TK
I	RCBP	DQE	ITG	WU	FS	NVK	JY	AX	MH	OL
J	GUNC	MLO	TQW	RS	KE	XPA	YD	HJ	BF	VI
K	HMNC	PKF	STG	QR	LO	XEY	VB	IW	DJ	UA
L	HLIX	PVB	UEC	RY	QO	GDA	NM	FJ	TW	KS
M	SQID	TEH	OYR	XA	WC	UPF	VJ	MK	LN	BG
N	NLCW	KRP	ISH	EX	GJ	UAF	MT	OY	VB	QD
O	HIGA	WRC	LSP	ET	BO	KJU	VM	DX	FQ	YN
P	ILNP	YEW	DJR	OS	XH	UFQ	KV	GT	MA	BC
Q	JUJR	FHX	IOT	EB	PK	GAC	VD	WN	MS	QL
R	WXVT	HEB	KUR	FJ	SD	YLA	GP	NC	MI	OQ
S	YTXE	GWK	POA	RD	IF	VCB	MQ	NH	JU	SL
T	UMDI	EPK	GVT	BR	NX	YFC	HJ	OA	QS	LW
U	BFCA	QUT	XID	MK	EY	GVS	OP	NJ	RL	WH
V	BMTY	GNS	WEX	RU	KL	FPO	CI	DJ	HQ	AV
W	BGPV	EXN	KID	OM	UJ	TRH	CY	LA	WQ	FS
X	XAGY	NCB	QKO	ML	RT	IPD	VE	FW	US	JH
Y	VGLR	KQB	YFT	HA	JI	MCP	OD	SX	UW	NE

**NAVAIDS**

Id	Name	Channel	Position	Elevation
BOO	Bodo	45	N67 15.838 E014 20.046	43
BNK	Banak	47	N70 03.937 E024 58.181	17
OYA	Andoya	28	N69 17.175 E016 08.658	19



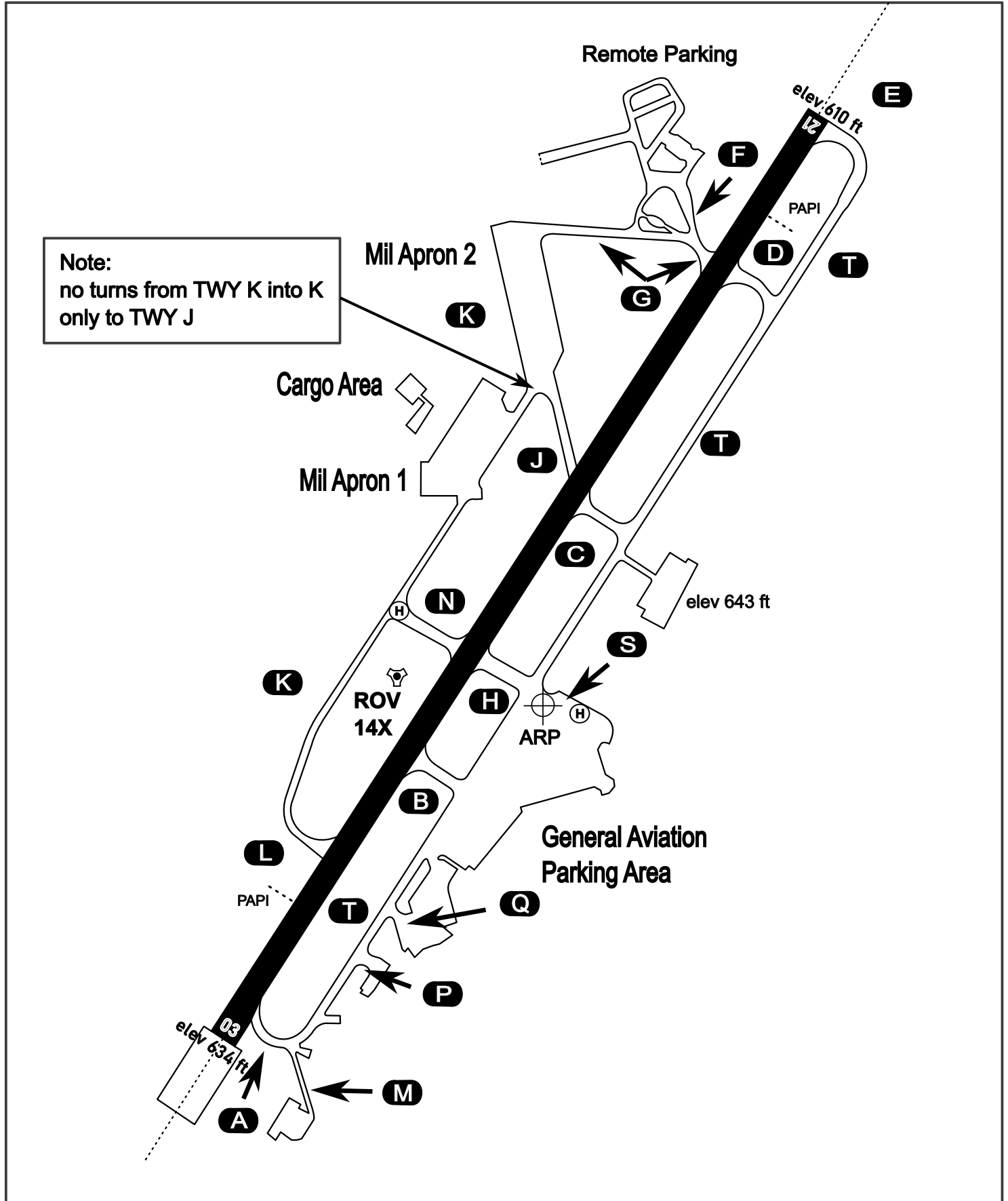
# AERODROME CHART

Rovaniemi Aerodrome

ARP N66° 33' 42" E025° 49' 51"

elev 643 ft

## ROVANIEMI, FINLAND

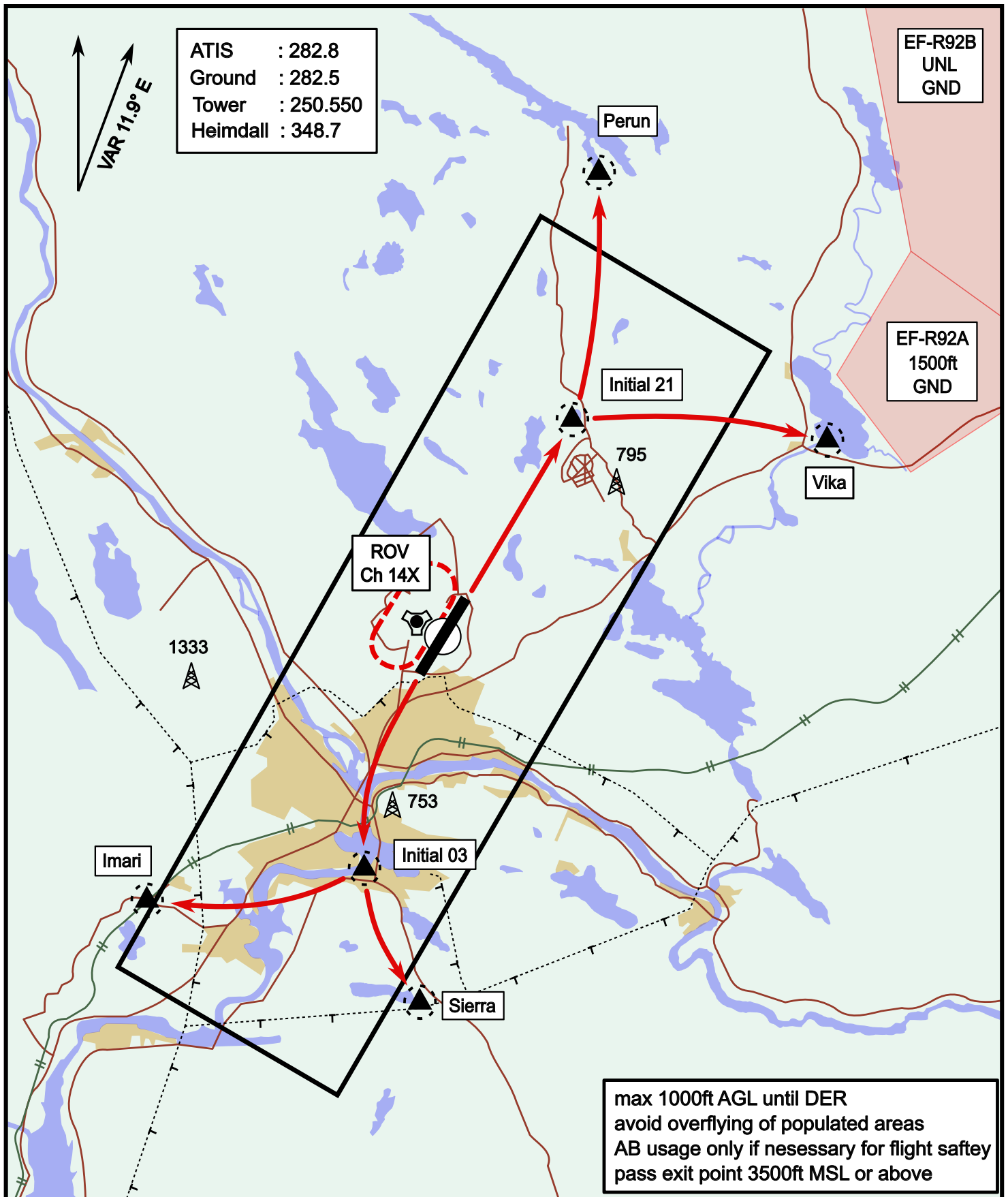


ATIS	Ground	Tower	Radar
282.800	282.500	250.550	348.700

# Visual Departure Jet

elev 643 ft

# Rovaniemi, Finland

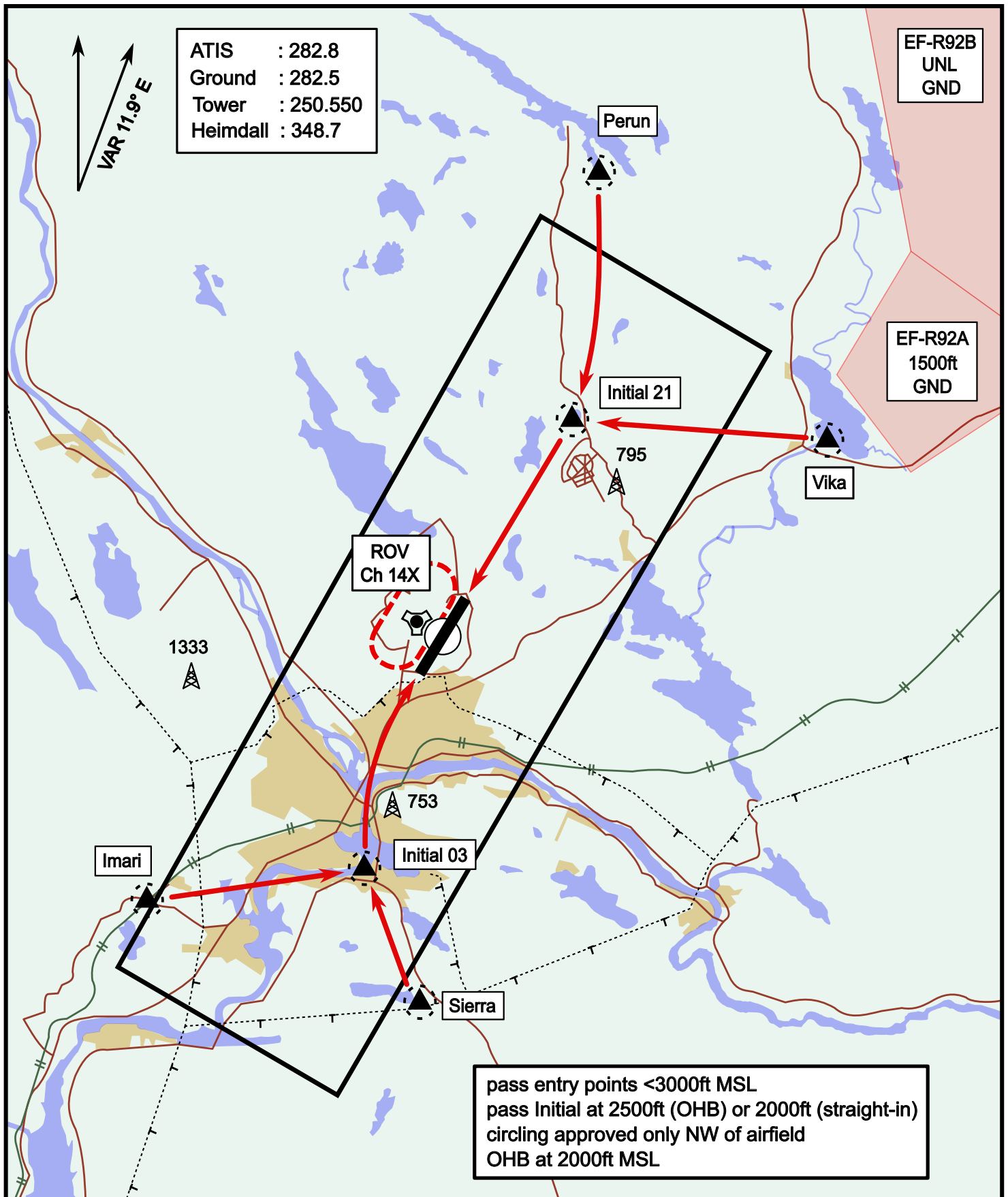


Vika	N66° 37.474 / E026° 13.557	Sierra	N66° 25.711 / E025° 46.610
Perun	N66° 44.135 / E026° 01.630	Imari	N66° 28.406 / E025° 31.291
Initial21	N66° 38.421 / E025° 58.682	Initial03	N66° 28.793 / E025° 44.105

# Visual Approach Jet

elev 643 ft

# Rovaniemi, Finland



Vika	N66° 37.474 / E026° 13.557	Sierra	N66° 25.711 / E025° 46.610
Perun	N66° 44.135 / E026° 01.630	Imari	N66° 28.406 / E025° 31.291
Initial21	N66° 38.421 / E025° 58.682	Initial03	N66° 28.793 / E025° 44.105