

MISSION DATA CARD

OPORD		Callsign		Mission		Date/Time		
3779/2025		Raptor 1		Training		251701MAR25		
Task						Freq		
AO						134.0		
Departure				Recovery				
SID RWY 03				ILS RWY 21				
#	Callsign		Pilot		IFF	TCN	LSR	NET
-1	Raptor 1-1		Jinx		1611	1Y	1621	

LOADOUT

A/A						GUN	
A/G						CHF	
POD						FLR	
TKS						FUEL	

TOLD

	Takeoff	Target	Joker	Bingo	Land
FUEL	7163				

AIRBASES

	Name	TCN	ATIS	GND	TWR	RWY	Elev	ILS
Dep	Rovaniemi	14X	282.8	282.5	250.55	21	643	111.7
Arr	Rovaniemi	14X	282.8	282.5	250.55	21	643	111.7

FLIGHTPLAN

#	Name	Navaid/Coords/DME	ALT	TOT
1	IBSAN	N66 42.500 E025 01.083	15000	
2	NAFFI	N67 04 37.837 E023 11 40.006	15000	
3	T-ESR03-07	N66 04 18.555 E023 15 02.585	15000	
4	NAFFI	N67 04 37.837 E023 11 40.006	15000	
5	IBSAN	N66 42 30.019 E025 01 04.824	15000	
6	OSLIT	N66 51 45.011 E025 24 22.802	10000	
7	NIPAK	N66 42 21.021 E026 06 04.833	3000	
8	Rovaniemi	N66 33 53.445 E025 49 49.755	1500	

SUPPORT**Tanker**

Callsign	TCN	Freq	ALT	TAS
ARCO 1	22Y	319.8		

Pos

AWACS

Callsign	Freq	ALT	Pos
HEIMDALL	348.7		

RADIO CHANNELS

#	Freq	Name
1		Flight/Squadron specific
2	282.8	Rovaniemi ATIS
3	282.5	Rovaniemi Ground
4	250.55	Rovaniemi Tower
5	320.7	Bodo ATIS
6	250.75	Bodo Tower
7	235.45	Kallax ATIS
8	250.3	Kallax Tower
9	265.0	Texaco-1 KC-135 Medium / Slow 71Y
10	319.8	Arco-1 KC-135 High / Fast 22Y
11	360.8	Shell-1 KC-135 MPRS High / Fast 41Y
12	304.0	CVN-71 Rough Rider (RRR) 71X
13	303.0	LHA-1 Tarawa (TWA) 79X
14	247.8	S-3B Mauler-1 (MAU) 64Y
15	347.8	Loki (E-2D)
16	348.7	Heimdall (E-3A)
17	242.17	ESR02 - CAS Range Operator
18	34.7	ESR02 - JTAC Odin
19	270.5	Blue
20	270.75	Red

RAMROD

0	1	2	3	4	5	6	7	8	9
C	L	A	M	P	D	O	W	N	S

KTC 1400 C

	0	1	2	3	4	5	6	7	8	9
A	HSAL	XWU	MBT	OF	DJ	NQG	KI	CY	RP	VE
B	UPMY	XKH	IWL	AT	VG	SRQ	FO	BD	JC	EN
C	RLDW	SGO	EKX	NA	BM	FQV	IT	PY	JU	CH
D	WCNM	BKO	YPU	JG	AH	TEL	XQ	SD	VF	IR
E	QTWU	LAE	FHR	KN	BI	GXS	MP	YC	JV	OD
F	HTER	WJC	QKM	LF	PB	IAD	YG	XU	NO	VS
G	ETPI	XBL	NSU	WK	OF	JMV	DC	QA	GH	RY
H	FUJD	XBG	WKE	MH	RV	YLO	TN	SA	IC	PQ
I	YRCV	NDS	XWM	QT	BJ	IKL	OU	HF	PA	GE
J	AHKX	OBU	LMY	TR	SW	FJV	ND	PE	QI	CG
K	RQWY	PNB	VKL	GU	AH	OIC	MD	XE	JF	ST
L	YJWA	HVT	UGP	ND	XQ	BOC	IM	SL	KR	FE
M	FEQA	DJL	TVB	YK	HU	PCI	SR	GX	MW	ON
N	ESCG	YKT	JNW	VD	MR	OXF	PU	BL	HQ	AI
O	OBCP	HSQ	UKX	DG	LM	TYF	IR	EV	JW	AN
P	PBKX	NLT	VHM	ES	AI	CRY	GW	FO	UQ	DJ
Q	ENGJ	MBO	TDQ	VL	IU	SAH	WF	PY	RK	CX
R	LTRX	QEW	NOP	JS	DG	IBY	UH	VF	MA	KC
S	DLWS	PHO	TVA	JC	YX	EUK	RI	MQ	GB	NF
T	SABV	ICJ	GTF	LN	HD	PUW	KY	EX	MR	QO
U	FLWK	SOU	VJH	PN	CM	XGA	YQ	ET	IB	RD
V	FSOE	AHD	NRT	MX	BY	PIQ	CW	GJ	KU	VL
W	GAKS	RQY	BPD	FE	OJ	HTL	WU	XM	CI	VN
X	MHLW	KOF	NYX	UB	EI	JDC	GS	VQ	AP	RT
Y	KQPN	ERY	JIG	HD	XT	BOS	VM	FW	LC	UA

NAVAIDS

Id	Name	Channel	Position	Elevation
BOO	Bodo	45	N67 15.838 E014 20.046	43
BNK	Banak	47	N70 03.937 E024 58.181	17
OYA	Andoya	28	N69 17.175 E016 08.658	19

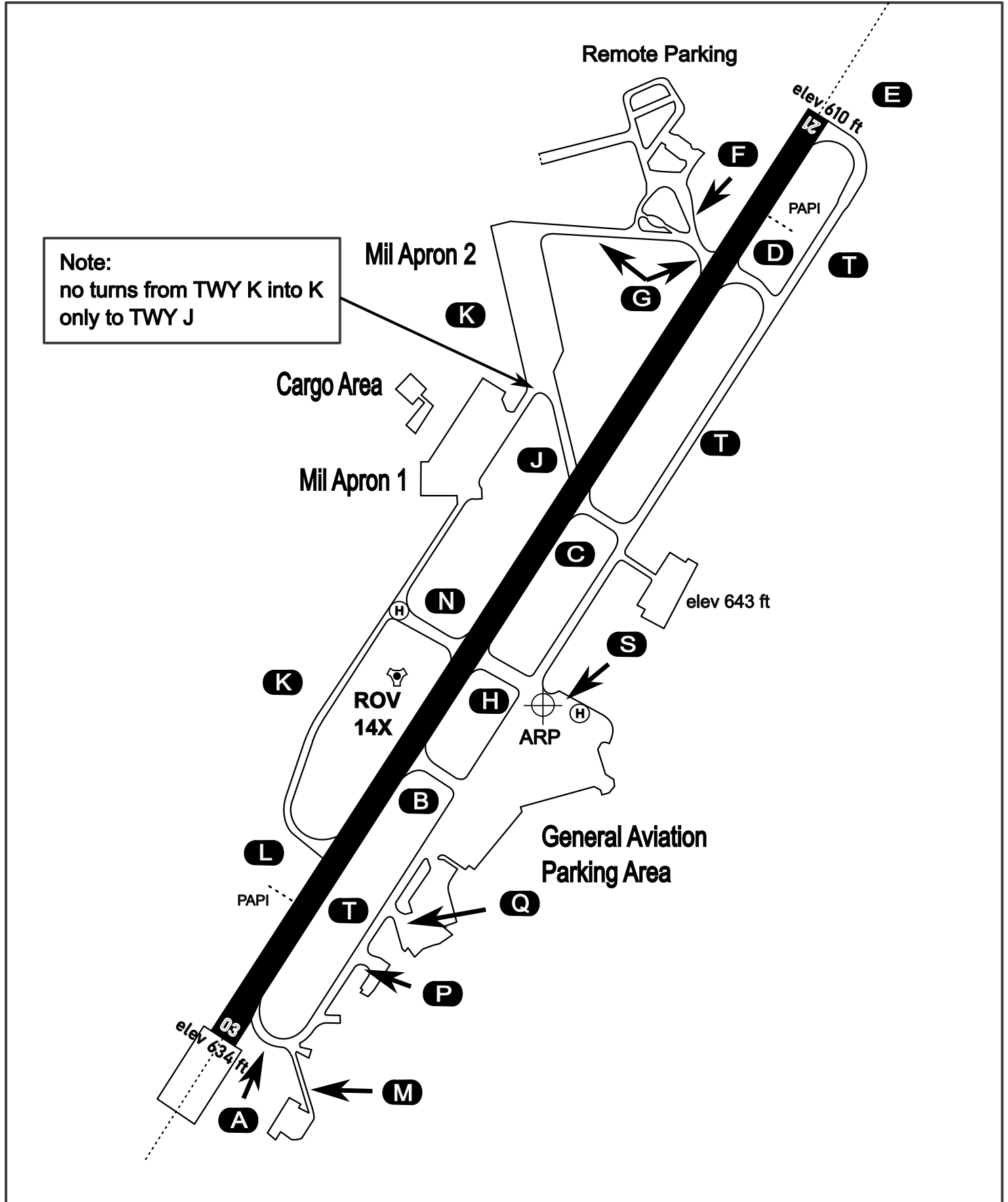
AERODROME CHART

Rovaniemi Aerodrome

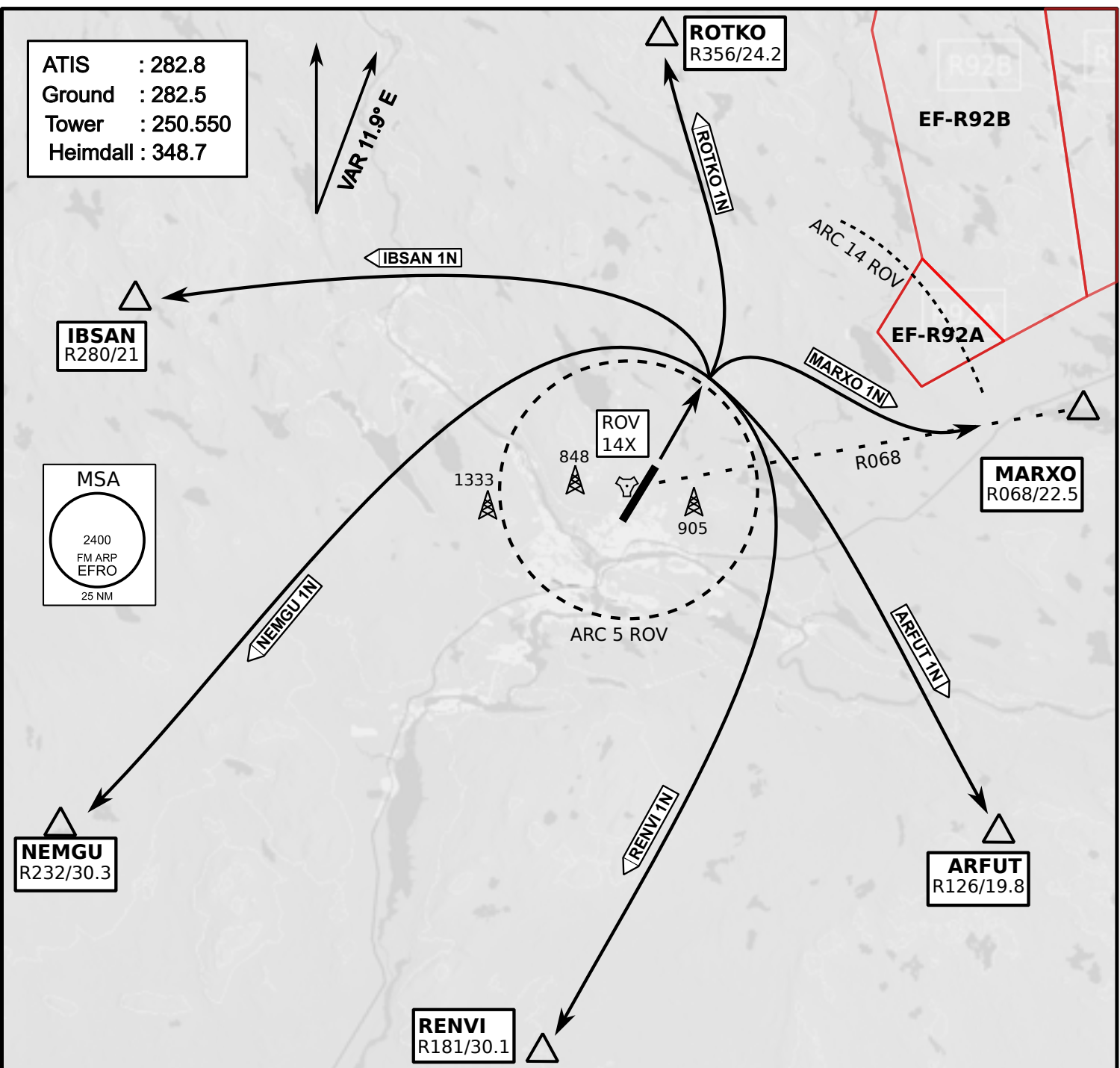
ARP N66° 33' 42" E025° 49' 51"

elev 643 ft

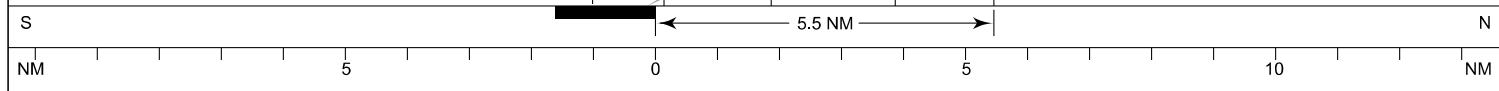
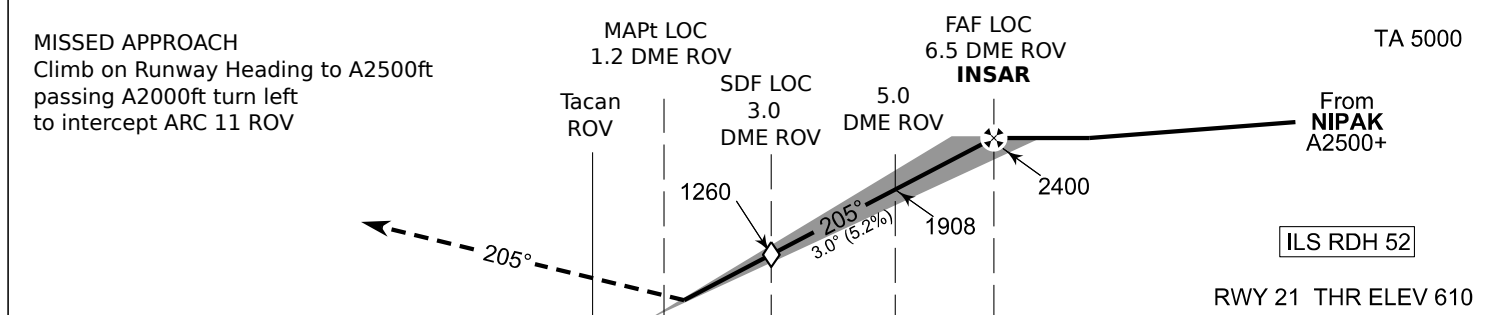
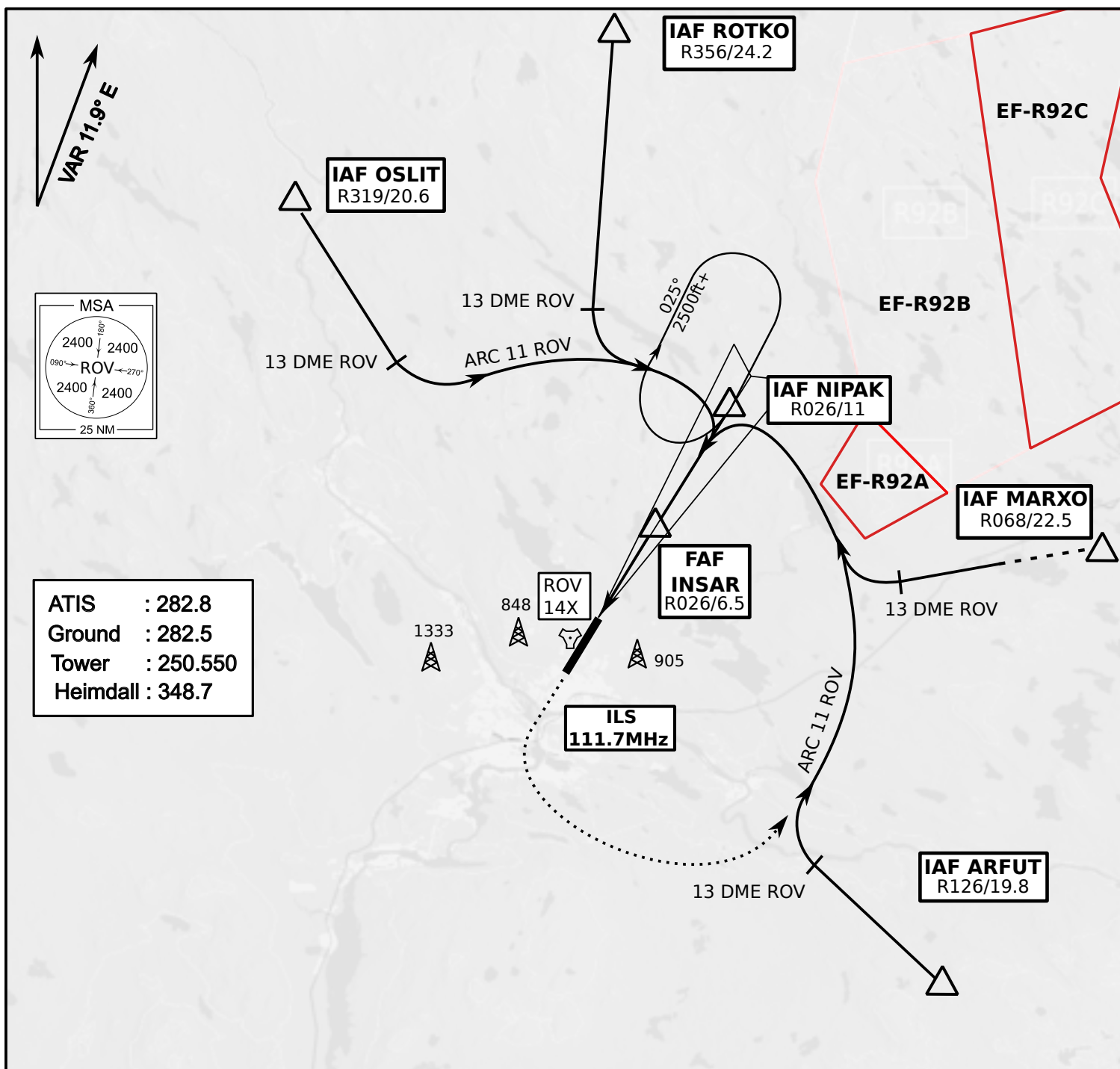
ROVANIEMI, FINLAND



ATIS	Ground	Tower	Radar
282.800	282.500	250.550	348.700



- Climb on Rwy heading to min A2000ft
- when passing A2000ft OR 5 DME ROV (whichever is later) turn to exit point
- Stay outside ARC 5 ROV
- if EF-R92B is active :
intercept R068 ROV inside 14 DME ROV to MARXO
- AB usage only if necessary for flight safety



OCA (H)	A	B	C	D
ILS CAT I	773 (164)	784 (175)	795 (186)	809 (200)
LOC	930 (320)			
LOC WO SDF	1260 (650)			
Circling	1120 (470)	1150 (510)	1300 (660)	1340 (690)

	kt	90	100	120	140	160
FAF - MAPt 5.4 NM	min:sec	3:36	3:14	2:42	2:19	2:01
Rate of descent	ft/min	480	530	640	740	850

Timing not authorized for defining the MAPt