

**MISSION DATA CARD**

OPORD		Callsign	Mission	Date/Time		
3776/2025		Monster 1	Strike	242000MAR25		
Task	Strike SCUD				Freq	
AO	Static 3				132.15	
Departure			Recovery			
SID RWY 03			ILS RWY 21			
#	Callsign	Pilot	IFF	TCN	LSR	NET
-1	Monster 1-1	Toolface	1411	1Y	1611	21/01
-2	Monster 1-2	addiks	1412	64Y	1612	21/02
-3	Monster 1-3	Stoner	1413	64X	1613	21/03

**LOADOUT**

A/A	2xA9L	GUN	100% CM
A/G	2xA65L, 2xG38, 7M257	CHF	240
POD	TGP, A184L	FLR	240
TKS		FUEL	100%

**TOLD**

	Takeoff	Target	Joker	Bingo	Land
FUEL	11087				

**AIRBASES**

	Name	TCN	ATIS	GND	TWR	RWY	Elev	ILS
Dep	Rovaniemi	14X	282.8	282.5	250.55	21	643	111.7
Arr	Rovaniemi	14X	282.8	282.5	250.55	21	643	111.7

**FLIGHTPLAN**

#	Name	Navaid/Coords/DME	ALT	TOT
1	RVNInit03	N66 28.793 E025 44.105	0	
2	IMARI	N66 28.406 E025 31.291	0	
3	XALPHA	N66 34.734 E023 01.488	0	
4	XBRAVO	N66 34.653 E023 01.126	0	
5	XCHARLY	N66 34.795 E023 01.804	0	
6	XDELTA	N66 34.910 E023	0	
7	XFOX	N66 35.140 E023 00.800	0	
8	XECHO	N66 35.005 E023 00.611	0	
9	XGOLF	N66 35 E023 01.045	0	
10	XHOTEL	N66 35.500 E023 00.600	0	
11	XINDIA	N66 34.650 E023 01.133	0	
12	PERUN	N66 44.135 E026 01.630	0	
13	RVNInit21	N66 38.642 E025 58.682	0	

**COMMS**

Radio	Usage
1	132.15
2	2, 4, 16, 2, 4
3	32,00

**OTHER FLIGHTS**

Callsign	Mission	Airframe	Freq	TCN	Grpld	Laser
Rattler 1	Training	4x AH-64D	133.5	1/64		125X
	AO	R92D	Task	Coop-Attack		
Raptor 1	Training	1x F-16C	134.0	1/64		162X
	AO		Task			

## RADIO CHANNELS

#	Freq	Name
1		Flight/Squadron specific
2	282.8	Rovaniemi ATIS
3	282.5	Rovaniemi Ground
4	250.55	Rovaniemi Tower
5	320.7	Bodo ATIS
6	250.75	Bodo Tower
7	235.45	Kallax ATIS
8	250.3	Kallax Tower
9	265.0	Texaco-1   KC-135   Medium / Slow   71Y
10	319.8	Arco-1   KC-135   High / Fast   22Y
11	360.8	Shell-1   KC-135 MPRS   High / Fast   41Y
12	304.0	CVN-71 Rough Rider (RRR)   71X
13	303.0	LHA-1 Tarawa (TWA)   79X
14	247.8	S-3B Mauler-1 (MAU)  64Y
15	347.8	Loki (E-2D)
16	348.7	Heimdall (E-3A)
17	242.17	ESR02 - CAS Range Operator
18	34.7	ESR02 - JTAC Odin
19	270.5	Blue
20	270.75	Red

**RAMROD**

0	1	2	3	4	5	6	7	8	9
M	A	L	N	O	U	R	I	S	H

**KTC 1400 C**

	0	1	2	3	4	5	6	7	8	9
A	RUST	IHN	MLA	KG	CQ	EPJ	WV	DF	BX	YO
B	KPUS	OFN	HBV	LR	QY	ADG	IX	WJ	TM	EC
C	SMIU	TAV	QLP	ND	GH	ECF	KB	XO	YW	JR
D	BIFU	KQM	SRY	GT	AP	OHN	JV	LE	XC	DW
E	HRBI	FAX	PUD	OY	WT	MGQ	JL	KV	SE	CN
F	FGPB	WHD	IXA	TL	UO	QYV	RN	SJ	CE	MK
G	URNI	CWJ	PGT	MQ	DF	XLS	OE	VH	YA	KB
H	MKHR	WPC	QIX	JD	OB	AVE	UN	TF	LY	GS
I	IXVH	JRC	KGY	TB	WQ	SLN	MD	FU	AO	EP
J	FJNO	LHY	MAC	EV	BS	DGQ	XU	KI	TW	RP
K	LHXU	WVE	PNA	QG	TD	FMY	JO	KI	RC	SB
L	JBWF	QEI	LXU	HS	OK	YPT	VN	GA	DM	CR
M	XIQE	BOW	YMD	AH	NL	CSJ	GP	FV	KT	UR
N	WEOR	FUK	SNJ	TI	DY	AHL	XM	BV	QC	GP
O	VQPC	XGH	ODM	UR	IN	BAJ	LT	EW	KS	FY
P	XOAU	YRW	QES	KI	CG	JTB	NL	VH	MD	FP
Q	COLU	FRT	PSJ	ME	KD	GVN	HA	IB	XQ	YW
R	VEQP	YIT	SMU	BK	GC	NWF	LH	JD	AO	RX
S	GADI	NPX	TLM	SR	OJ	FQB	YE	KC	HW	UV
T	TXMJ	LDW	ISQ	AE	NK	UVH	RY	FO	PC	GB
U	LVFJ	BIM	QWA	CN	GP	UXD	TK	RO	SE	HY
V	SCXO	LDT	KGN	BY	FE	VAI	HM	UQ	WP	RJ
W	KVQY	DSU	EGR	IJ	CH	LPM	FN	BT	XW	AO
X	OWXU	VBJ	NQL	AK	ID	MEC	YS	RT	HF	GP
Y	GRIQ	FKT	OEP	UN	AM	HDL	WJ	CX	VS	YB

**NAVAIDS**

Id	Name	Channel	Position	Elevation
BOO	Bodo	45	N67 15.838 E014 20.046	43
BNK	Banak	47	N70 03.937 E024 58.181	17
OYA	Andoya	28	N69 17.175 E016 08.658	19

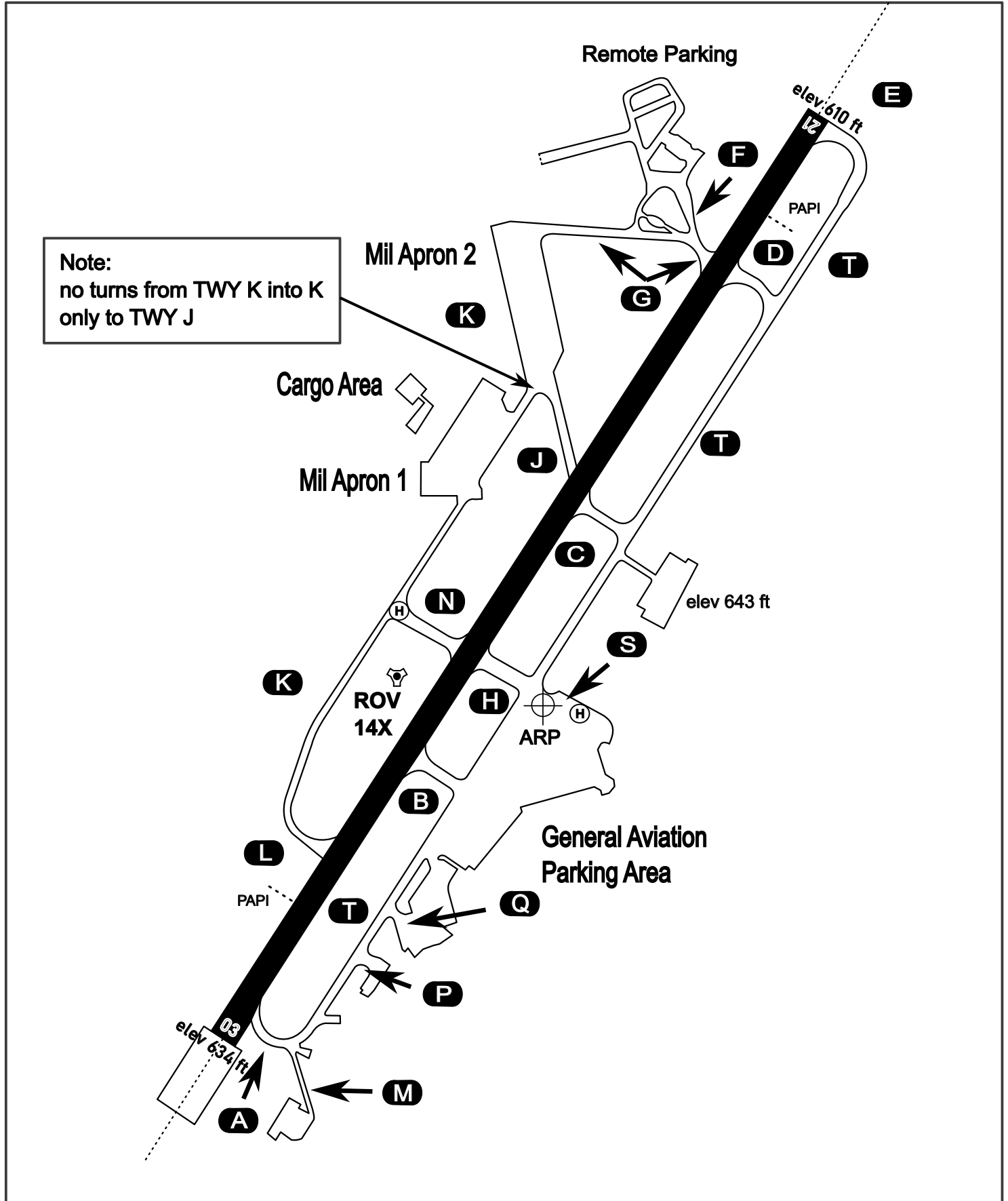
# AERODROME CHART

Rovaniemi Aerodrome

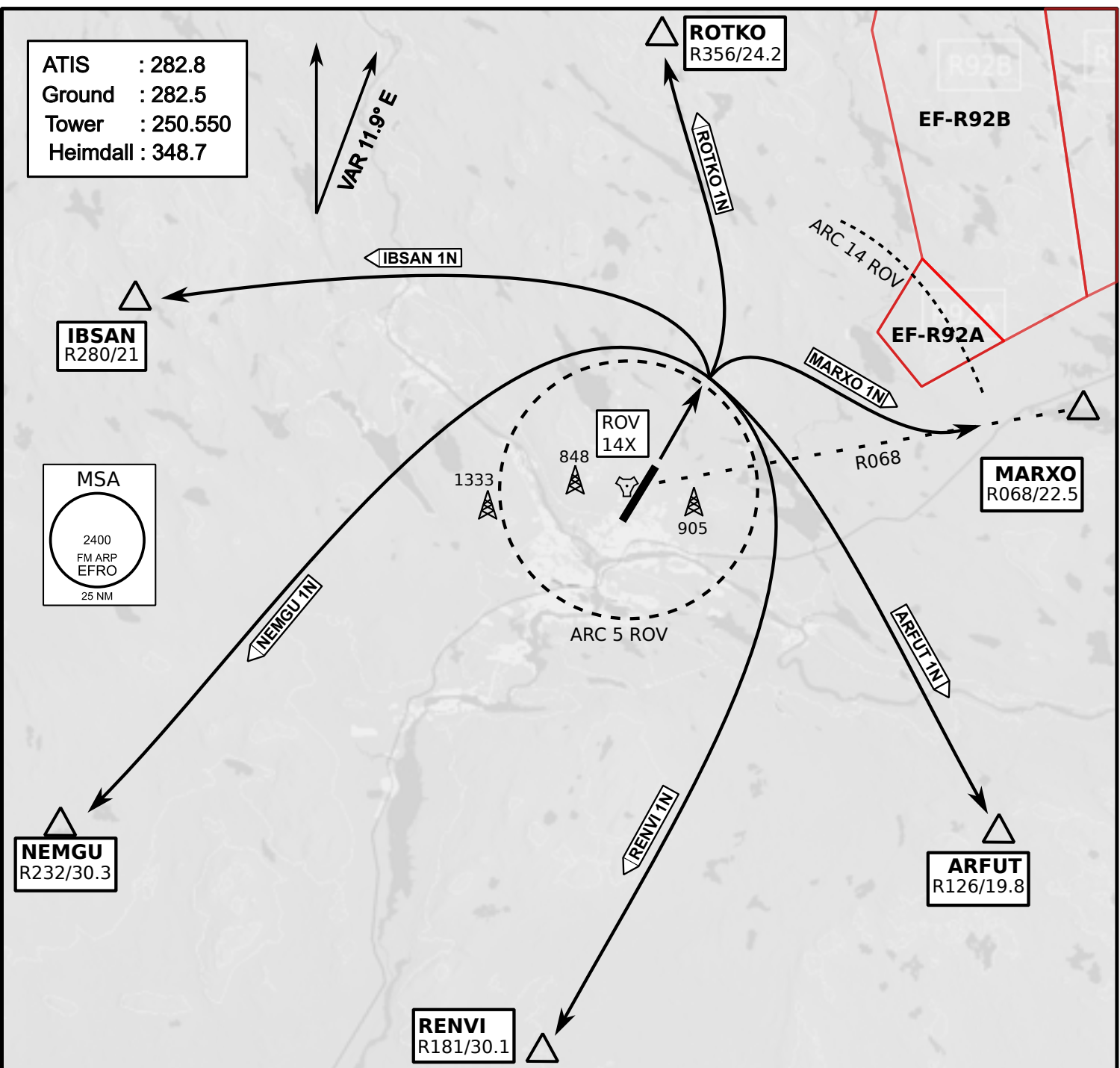
ARP N66° 33' 42" E025° 49' 51"

elev 643 ft

## ROVANIEMI, FINLAND



ATIS	Ground	Tower	Radar
282.800	282.500	250.550	348.700



- Climb on Rwy heading to min A2000ft
- when passing A2000ft OR 5 DME ROV (whichever is later) turn to exit point
- Stay outside ARC 5 ROV
- if EF-R92B is active :  
intercept R068 ROV inside 14 DME ROV to MARXO
- AB usage only if necessary for flight safety



