

MISSION DATA CARD

OPORD		Callsign		Mission		Date/Time	
3775/2025		Zapper* 1		Training		261800MAR25	
Task	Dive Bombing					Freq	
AO						264.05	
Departure				Recovery			
VFR Departure				VFR Approach			
#	Callsign	Pilot		IFF	TCN	LSR	NET
-1	Zapper* 1-1	Butcher		1701	1Y	1701	

LOADOUT

A/A					GUN	100% AP&HE	
A/G	2x3xM82				CHF	120	
POD	S23				FLR	0	
TKS	2xFT370				FUEL	100%	

TOLD

	Takeoff	Target	Joker	Bingo	Land
FUEL	16969				

AIRBASES

	Name	TCN	ATIS	GND	TWR	RWY	Elev	ILS
Dep	Rovaniemi	14X	282.8	282.5	250.55	21	643	111.7
Arr	Rovaniemi	14X	282.8	282.5	250.55	21	643	111.7
Div	Kuusamo				250.35	30	866	110.3

FLIGHTPLAN

#	Name	Navaid/Coords/DME	ALT	TOT
1	RVNInit03	N66 28.793 E025 44.105	1000	
2	GOSOV	N66 27.967 E025 39.467	1500	
3	IMARI	N66 28.406 E025 31.291	2000	
4	ROTKO	N66 57.633 E025 57.667	3000	
5	IP	N67 17.567 E026 22.243	4000	
6	TG1	N67 21.230 E026 22.465	4000	
7	TG2	N67 22.646 E026 22.788	4000	
8	ROTKO	N66 57.633 E025 57.667	3000	
9	PERUN	N66 44.135 E026 01.630	2500	
10	RVNInit21	N66 38.642 E025 58.682	2500	
11	LDG	N66 33.914 E025 49.814	500	

SUPPORT**Tanker**

Callsign	TCN	Freq	ALT	TAS
ARCO 1	22Y	319.8		
	Pos			

AWACS

Callsign	Freq	ALT	Pos
HEIMDALL	348.7		

RADIO CHANNELS

#	Freq	Name
1		Flight/Squadron specific
2	282.8	Rovaniemi ATIS
3	282.5	Rovaniemi Ground
4	250.55	Rovaniemi Tower
5	320.7	Bodo ATIS
6	250.75	Bodo Tower
7	235.45	Kallax ATIS
8	250.3	Kallax Tower
9	265.0	Texaco-1 KC-135 Medium / Slow 71Y
10	319.8	Arco-1 KC-135 High / Fast 22Y
11	360.8	Shell-1 KC-135 MPRS High / Fast 41Y
12	304.0	CVN-71 Rough Rider (RRR) 71X
13	303.0	LHA-1 Tarawa (TWA) 79X
14	247.8	S-3B Mauler-1 (MAU) 64Y
15	347.8	Loki (E-2D)
16	348.7	Heimdall (E-3A)
17	242.17	ESR02 - CAS Range Operator
18	34.7	ESR02 - JTAC Odin
19	270.5	Blue
20	270.75	Red

RAMROD

0	1	2	3	4	5	6	7	8	9
O	U	T	P	L	A	Y	I	N	G

KTC 1400 C

	0	1	2	3	4	5	6	7	8	9
A	PJUR	QKB	CMN	SI	WA	EXO	VH	DF	GL	TY
B	DASG	HPB	EFO	QI	VM	NRK	UT	CW	XJ	YL
C	QPVB	GDM	HEC	OK	AU	JNW	FX	IY	TL	SR
D	ISVE	FUJ	KXO	CH	MW	BGD	PR	AY	LT	NQ
E	PXJN	GAR	IKT	EC	DW	YLS	BU	QO	MH	FV
F	APTH	FRB	ISY	DV	OC	LQW	MG	EX	UJ	NK
G	GFHU	JYB	XQI	MW	CV	LDA	PN	KT	SE	OR
H	DHNS	JUB	OWX	ML	FA	PCV	TY	EG	IR	KQ
I	RKVL	HSB	YOU	NW	EP	CFJ	GM	ID	XT	AQ
J	AFJC	WRM	GQK	OP	SD	YLN	BX	IV	HT	UE
K	UNGO	VWR	KXP	SF	LI	MCT	DY	AQ	HE	JB
L	EWRL	QKN	SXF	IA	CG	OMD	BH	VP	YU	JT
M	SJNE	CKT	YOM	HL	IB	RGD	AW	QU	PF	XV
N	YIMN	VJR	DQS	OX	HL	EGC	PU	TB	WF	AK
O	MRAI	LCT	PBQ	GK	UW	DVH	JE	YO	XF	NS
P	WDPN	RKS	GOV	YI	LU	ECJ	TA	HM	XQ	BF
Q	YRHS	WMI	PJX	CE	DU	OFB	AK	NG	LQ	VT
R	IWJM	BYT	ARC	LH	UQ	DEX	VF	KN	PO	SG
S	DTUB	YAM	QSG	FN	CE	OWI	PH	XL	KR	JV
T	TQRK	CYU	HEA	WG	XV	FNO	DP	BJ	MI	LS
U	AORK	ICV	EQM	JD	PB	YXF	SU	LW	HT	NG
V	UNDY	GFE	XRC	OT	LP	VBI	QJ	WA	HS	KM
W	HCNP	FDS	UQO	EI	RG	TLB	JK	XV	MA	YW
X	KDFS	BAN	XPM	IU	GL	REQ	OV	YW	HJ	CT
Y	SUHY	ITW	ARX	MQ	VO	NCP	GE	DL	KB	JF

NAVAIDS

Id	Name	Channel	Position	Elevation
BOO	Bodo	45	N67 15.838 E014 20.046	43
BNK	Banak	47	N70 03.937 E024 58.181	17
OYA	Andoya	28	N69 17.175 E016 08.658	19

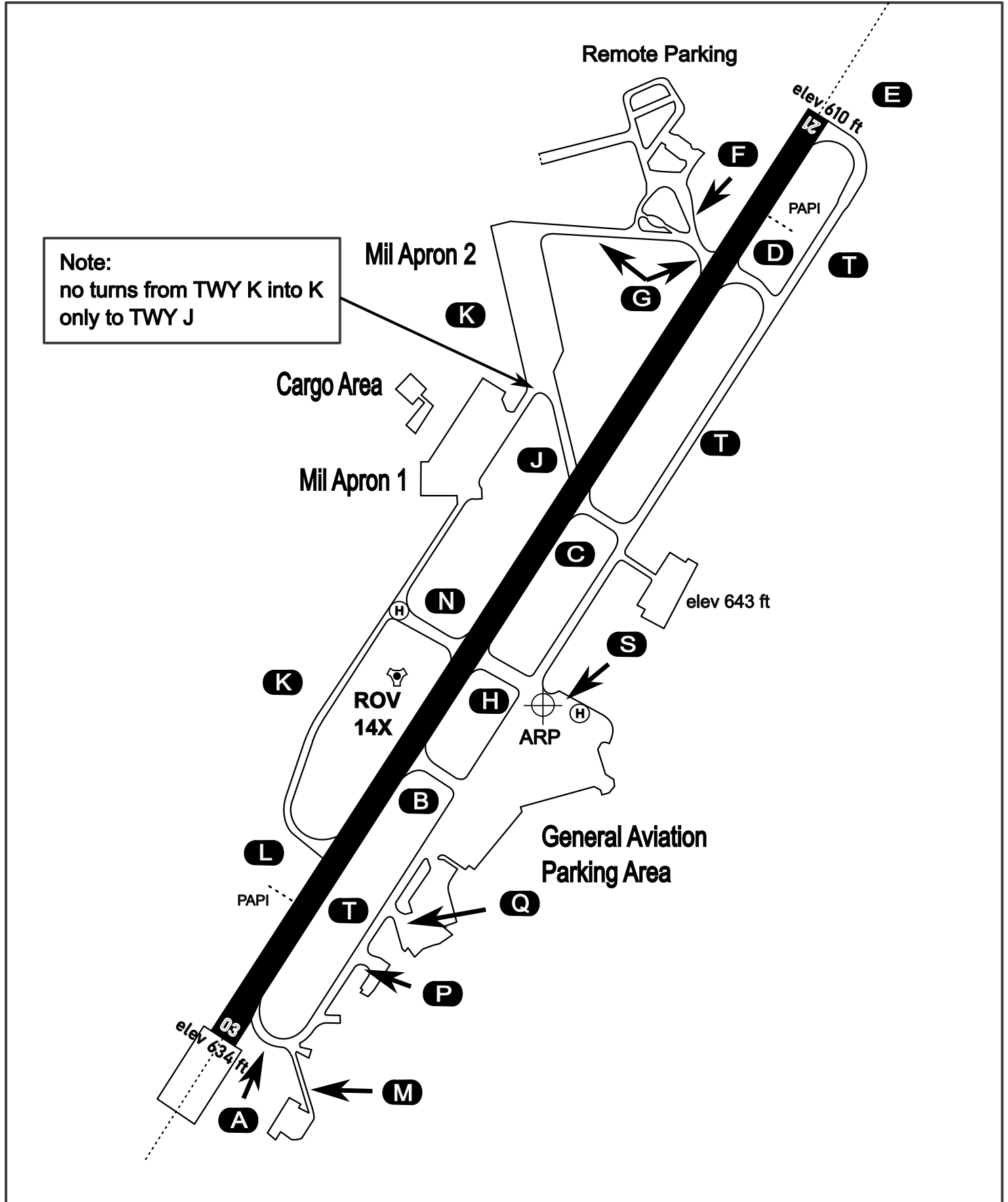
AERODROME CHART

Rovaniemi Aerodrome

ARP N66° 33' 42" E025° 49' 51"

elev 643 ft

ROVANIEMI, FINLAND

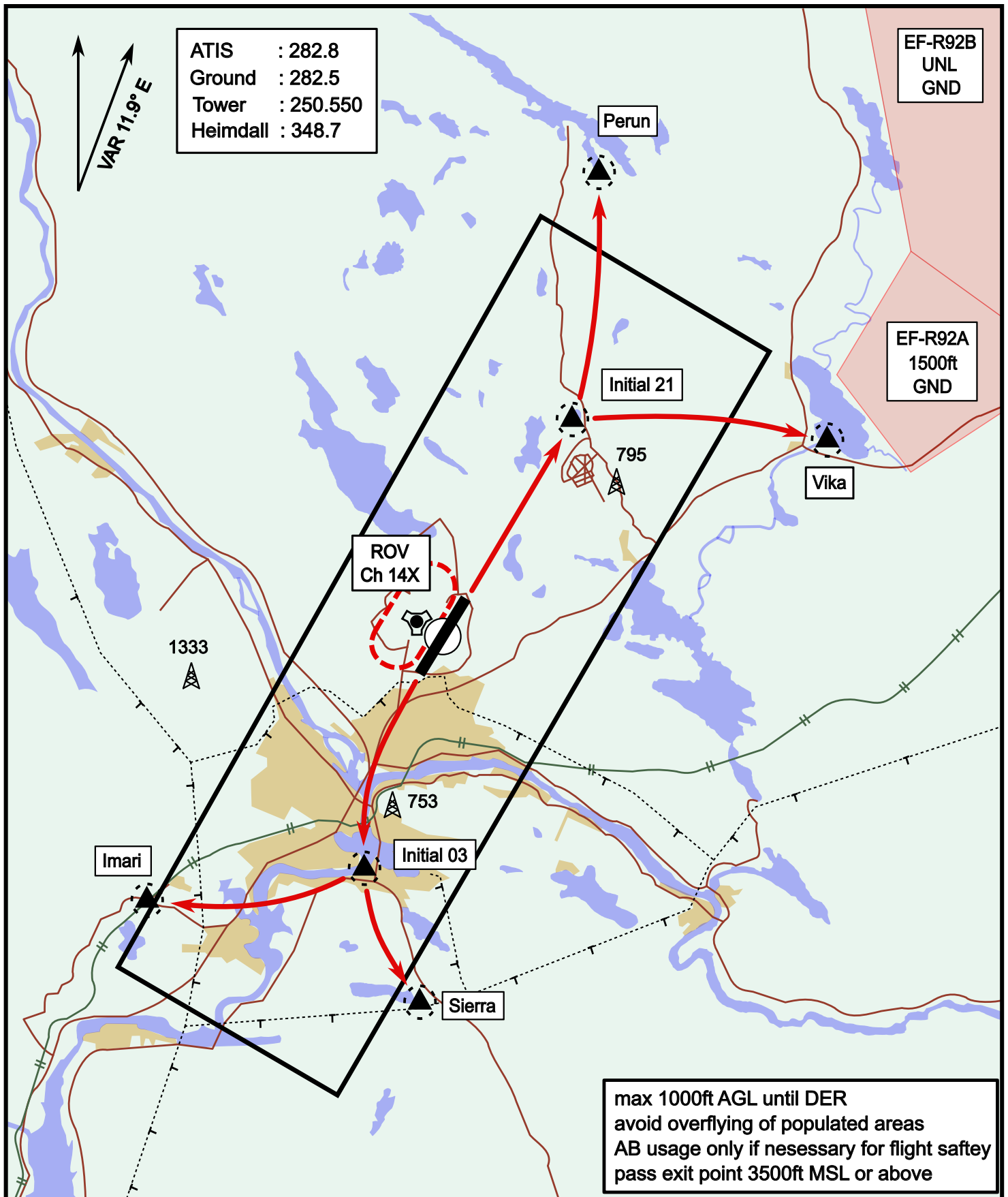


ATIS	Ground	Tower	Radar
282.800	282.500	250.550	348.700

Visual Departure Jet

elev 643 ft

Rovaniemi, Finland

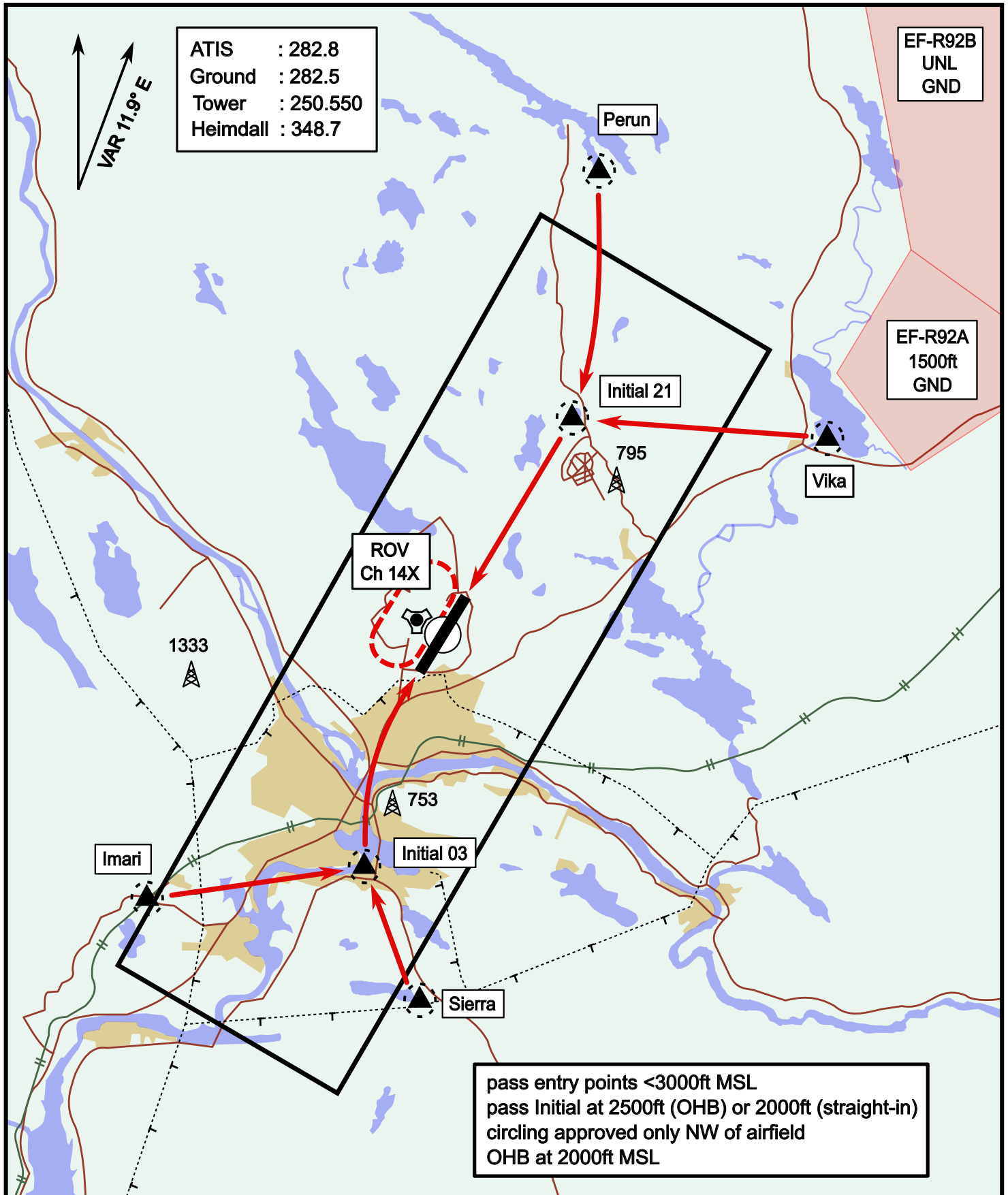


Vika	N66° 37.474 / E026° 13.557	Sierra	N66° 25.711 / E025° 46.610
Perun	N66° 44.135 / E026° 01.630	Imari	N66° 28.406 / E025° 31.291
Initial21	N66° 38.421 / E025° 58.682	Initial03	N66° 28.793 / E025° 44.105

Visual Approach Jet

elev 643 ft

Rovaniemi, Finland



Vika	N66° 37.474 / E026° 13.557	Sierra	N66° 25.711 / E025° 46.610
Perun	N66° 44.135 / E026° 01.630	Imari	N66° 28.406 / E025° 31.291
Initial21	N66° 38.421 / E025° 58.682	Initial03	N66° 28.793 / E025° 44.105

NOT AVAILABLE

NOT AVAILABLE