

MISSION DATA CARD

OPORD		Callsign		Mission		Date/Time	
3774/2025		Raptor 1		Training		242145MAR25	
Task						Freq	
AO						134.0	
Departure				Recovery			
VFR Helicopter				VFR Approach			
#	Callsign	Pilot		IFF	TCN	LSR	NET
-1	Raptor 1-1	Nerkub		1611	1Y	1621	

LOADOUT

A/A						GUN	
A/G						CHF	
POD						FLR	
TKS						FUEL	

TOLD

	Takeoff	Target	Joker	Bingo	Land
FUEL	7163				

AIRBASES

	Name	TCN	ATIS	GND	TWR	RWY	Elev	ILS
Dep	Rovaniemi	14X	282.8	282.5	250.55	21	643	111.7
Arr	Rovaniemi	14X	282.8	282.5	250.55	21	643	111.7
Div	Rovaniemi	14X	282.8	282.5	250.55	21	643	111.7

FLIGHTPLAN

#	Name	Navaid/Coords/DME	ALT	TOT
1	PERUN	N66 44 08.120 E026 01 37.812	15000	
2	VIKA	N66 37 28.469 E026 13 33.460	15000	
3	IMARI	N66 28 24.377 E025 31 17.480	15000	
4	SIERRA	N66 25 42.681 E025 46 36.642	15000	
5	IBSAN	N66 42 30.019 E025 01 04.824	15000	
6	NAFFI	N67 04 37.837 E023 11 40.006	15000	
7	7	N67 49 35.323 E022 46 35.893	15000	
8	8	N68 23 29.607 E021 04 03.320	15000	
9	9	N68 51 53.095 E022 45 29.706	15000	
10	SEPJA	N67 27 18.033 E021 12 04.808	15000	
11	IBSAN	N66 42 30.019 E025 01 04.824	15000	
12	Rovaniemi	N66 33 53.445 E025 49 49.755	1500	

OTHER FLIGHTS

Callsign	Mission	Airframe	Freq	TCN	Grpld	Laser
Rattler 1	Training	4x AH-64D	133.5	1/64		125X
AO	R92D	Task	Coop-Attack			
Monster 1	Strike	4x A-10C	132.15	1/64	21	161X
AO	Static 3	Task	Strike SCUD			

RADIO CHANNELS

#	Freq	Name
1		Flight/Squadron specific
2	282.8	Rovaniemi ATIS
3	282.5	Rovaniemi Ground
4	250.55	Rovaniemi Tower
5	320.7	Bodo ATIS
6	250.75	Bodo Tower
7	235.45	Kallax ATIS
8	250.3	Kallax Tower
9	265.0	Texaco-1 KC-135 Medium / Slow 71Y
10	319.8	Arco-1 KC-135 High / Fast 22Y
11	360.8	Shell-1 KC-135 MPRS High / Fast 41Y
12	304.0	CVN-71 Rough Rider (RRR) 71X
13	303.0	LHA-1 Tarawa (TWA) 79X
14	247.8	S-3B Mauler-1 (MAU) 64Y
15	347.8	Loki (E-2D)
16	348.7	Heimdall (E-3A)
17	242.17	ESR02 - CAS Range Operator
18	34.7	ESR02 - JTAC Odin
19	270.5	Blue
20	270.75	Red

RAMROD

0	1	2	3	4	5	6	7	8	9
M	A	L	N	O	U	R	I	S	H

KTC 1400 C

	0	1	2	3	4	5	6	7	8	9
A	RUST	IHN	MLA	KG	CQ	EPJ	WV	DF	BX	YO
B	KPUS	OFN	HBV	LR	QY	ADG	IX	WJ	TM	EC
C	SMIU	TAV	QLP	ND	GH	ECF	KB	XO	YW	JR
D	BIFU	KQM	SRY	GT	AP	OHN	JV	LE	XC	DW
E	HRBI	FAX	PUD	OY	WT	MGQ	JL	KV	SE	CN
F	FGPB	WHD	IXA	TL	UO	QYV	RN	SJ	CE	MK
G	URNI	CWJ	PGT	MQ	DF	XLS	OE	VH	YA	KB
H	MKHR	WPC	QIX	JD	OB	AVE	UN	TF	LY	GS
I	IXVH	JRC	KGY	TB	WQ	SLN	MD	FU	AO	EP
J	FJNO	LHY	MAC	EV	BS	DGQ	XU	KI	TW	RP
K	LHXU	WVE	PNA	QG	TD	FMY	JO	KI	RC	SB
L	JBWF	QEI	LXU	HS	OK	YPT	VN	GA	DM	CR
M	XIQE	BOW	YMD	AH	NL	CSJ	GP	FV	KT	UR
N	WEOR	FUK	SNJ	TI	DY	AHL	XM	BV	QC	GP
O	VQPC	XGH	ODM	UR	IN	BAJ	LT	EW	KS	FY
P	XOAU	YRW	QES	KI	CG	JTB	NL	VH	MD	FP
Q	COLU	FRT	PSJ	ME	KD	GVN	HA	IB	XQ	YW
R	VEQP	YIT	SMU	BK	GC	NWF	LH	JD	AO	RX
S	GADI	NPX	TLM	SR	OJ	FQB	YE	KC	HW	UV
T	TXMJ	LDW	ISQ	AE	NK	UVH	RY	FO	PC	GB
U	LVFJ	BIM	QWA	CN	GP	UXD	TK	RO	SE	HY
V	SCXO	LDT	KGN	BY	FE	VAI	HM	UQ	WP	RJ
W	KVQY	DSU	EGR	IJ	CH	LPM	FN	BT	XW	AO
X	OWXU	VBJ	NQL	AK	ID	MEC	YS	RT	HF	GP
Y	GRIQ	FKT	OEP	UN	AM	HDL	WJ	CX	VS	YB

NAVAIDS

Id	Name	Channel	Position	Elevation
BOO	Bodo	45	N67 15.838 E014 20.046	43
BNK	Banak	47	N70 03.937 E024 58.181	17
OYA	Andoya	28	N69 17.175 E016 08.658	19

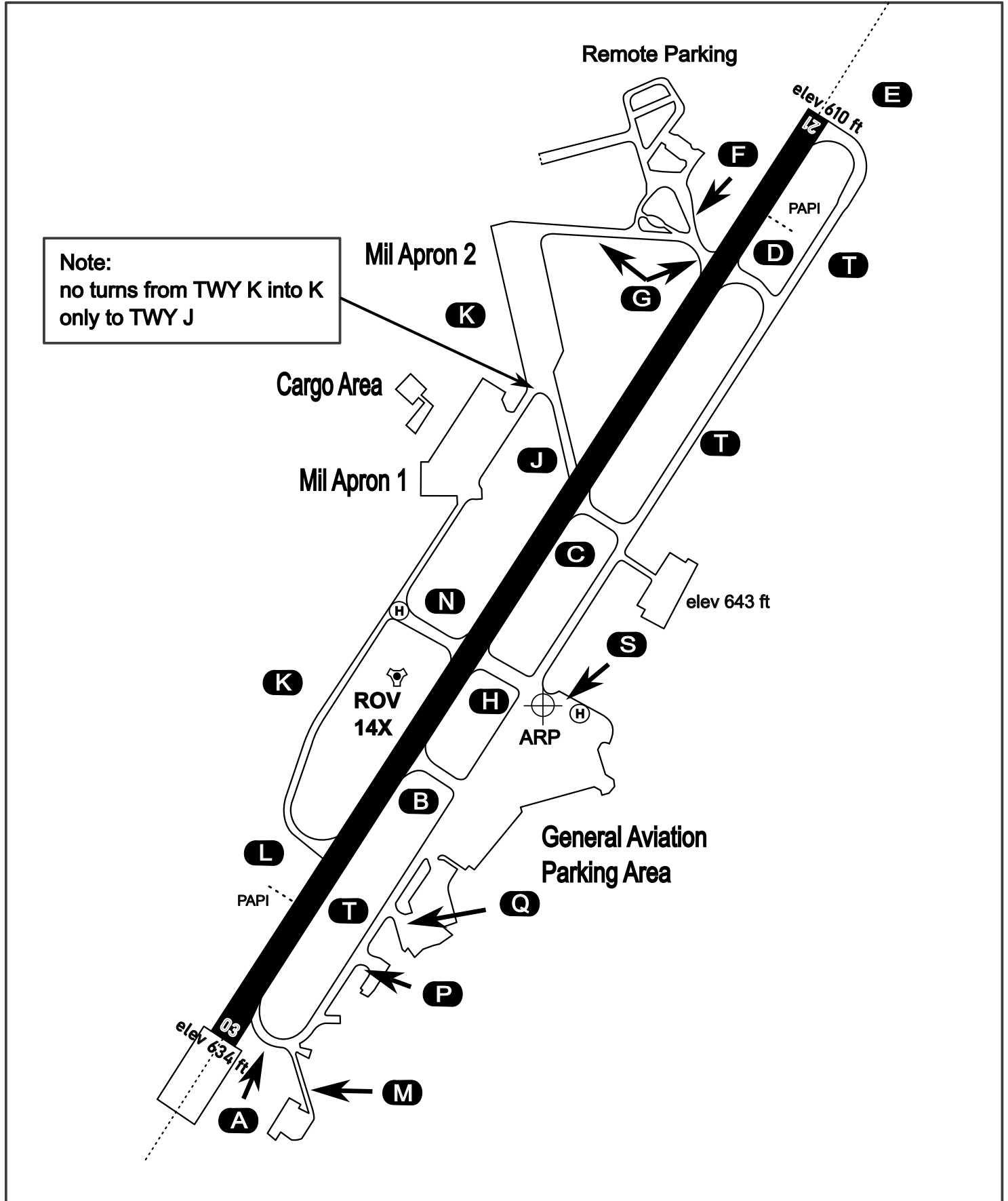
AERODROME CHART

Rovaniemi Aerodrome

ARP N66° 33' 42" E025° 49' 51"

elev 643 ft

ROVANIEMI, FINLAND

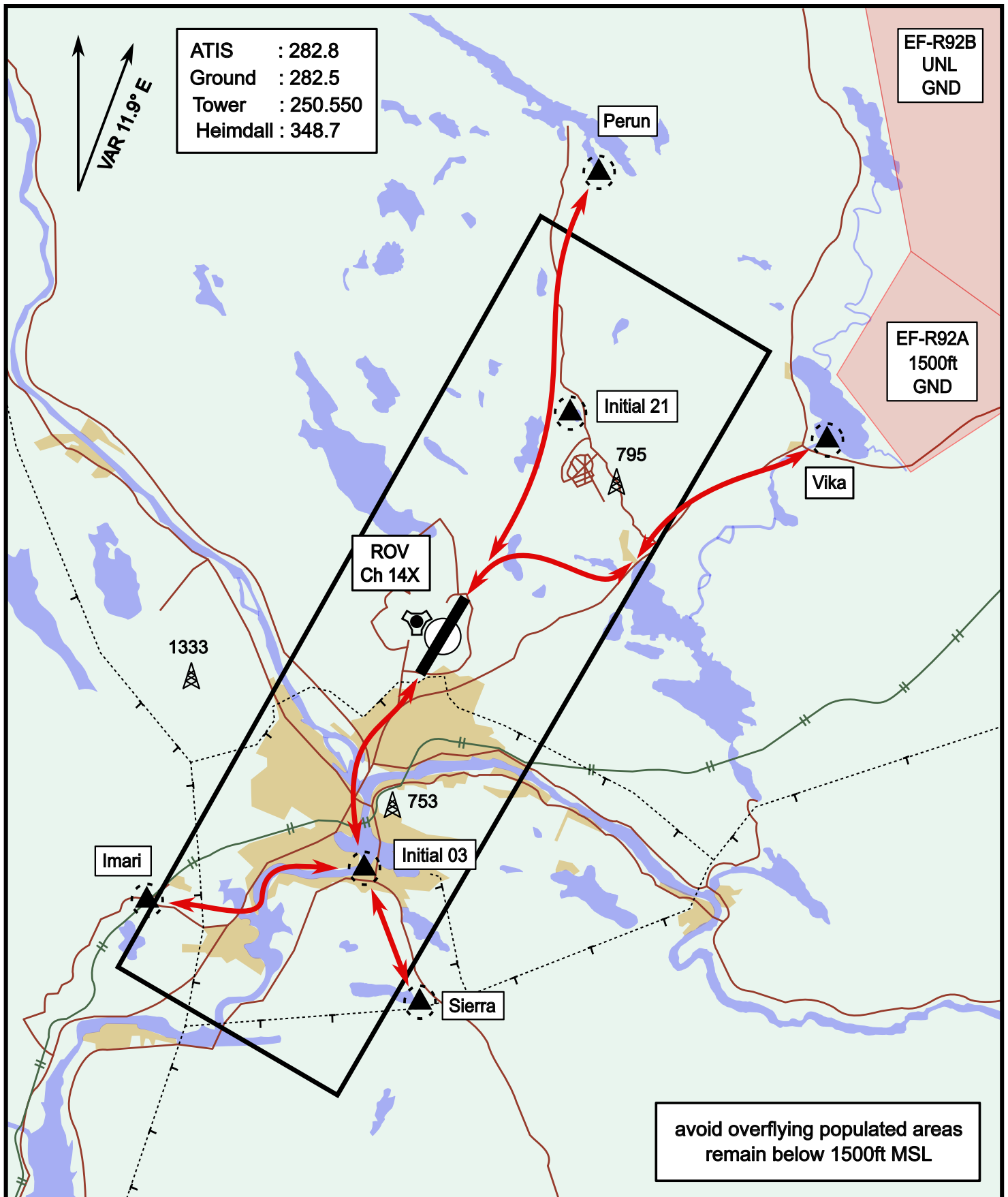


ATIS	Ground	Tower	Radar
282.800	282.500	250.550	348.700

Helicopter Routing

elev 643 ft

Rovaniemi, Finland

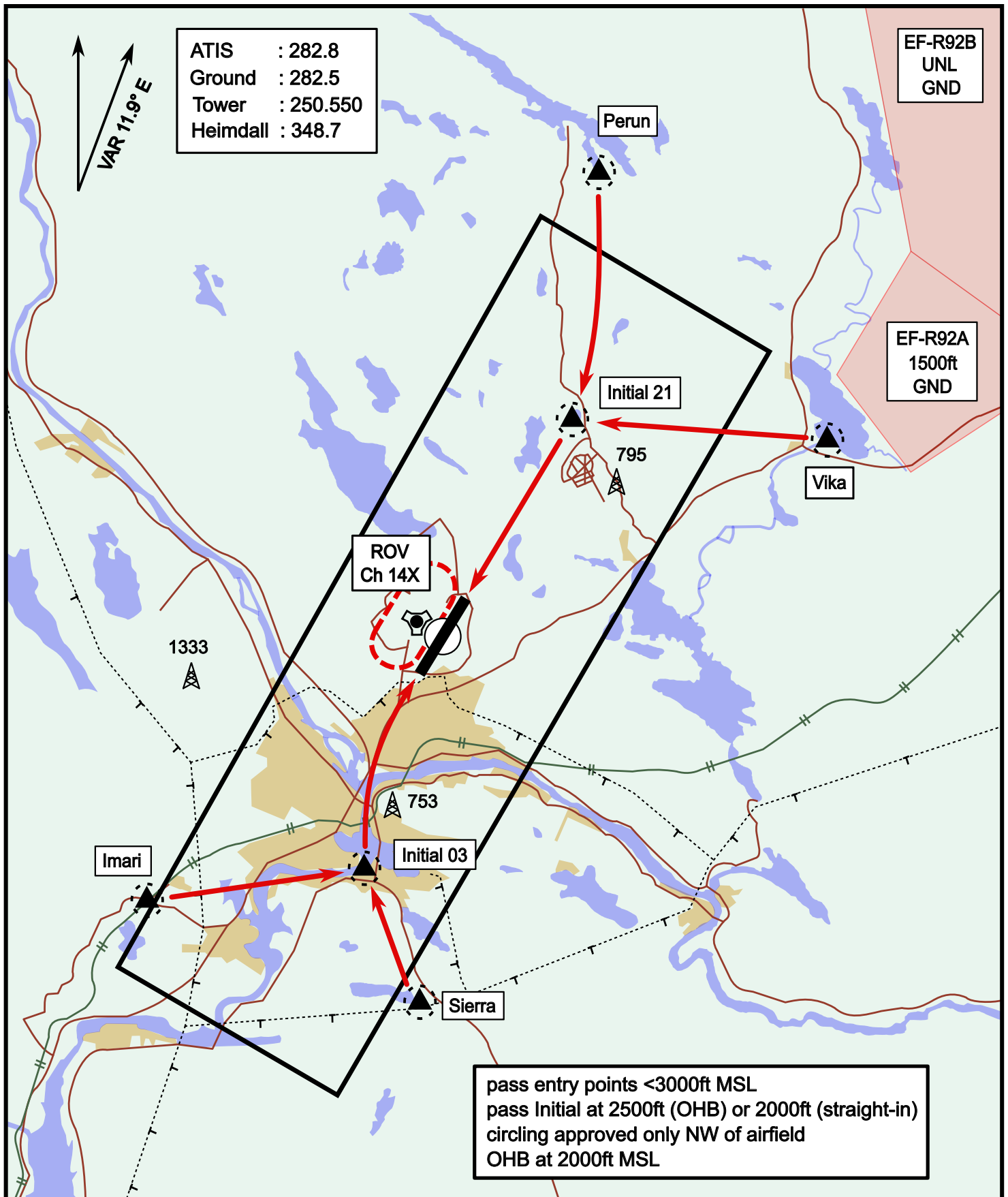


Vika	N66° 37.474 / E026° 13.557	Sierra	N66° 25.711 / E025° 46.610
Perun	N66° 44.135 / E026° 01.630	Imari	N66° 28.406 / E025° 31.291
Initial21	N66° 38.421 / E025° 58.682	Initial03	N66° 28.793 / E025° 44.105

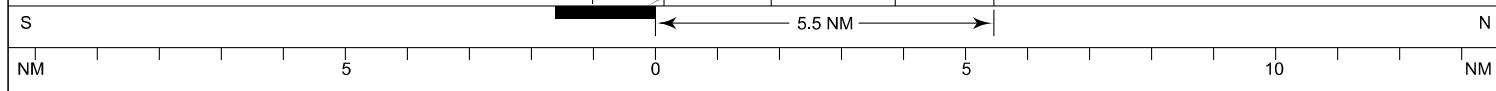
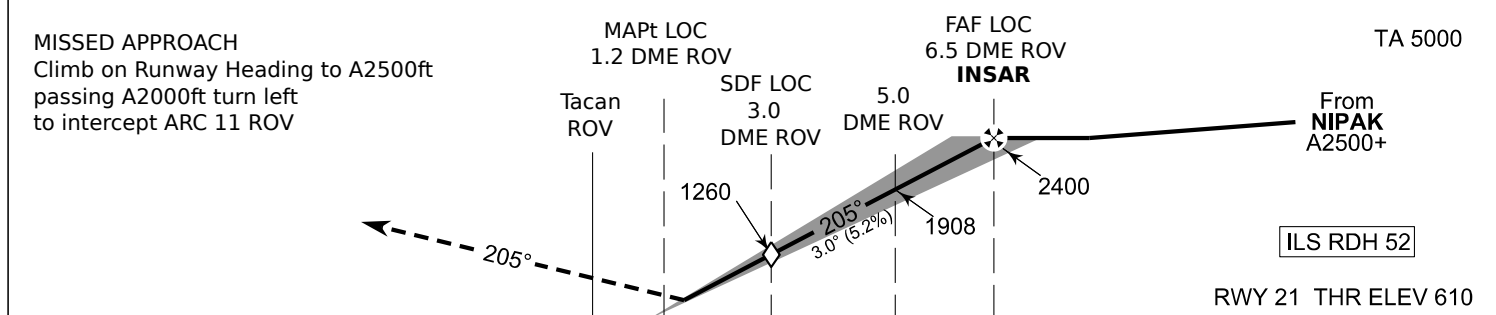
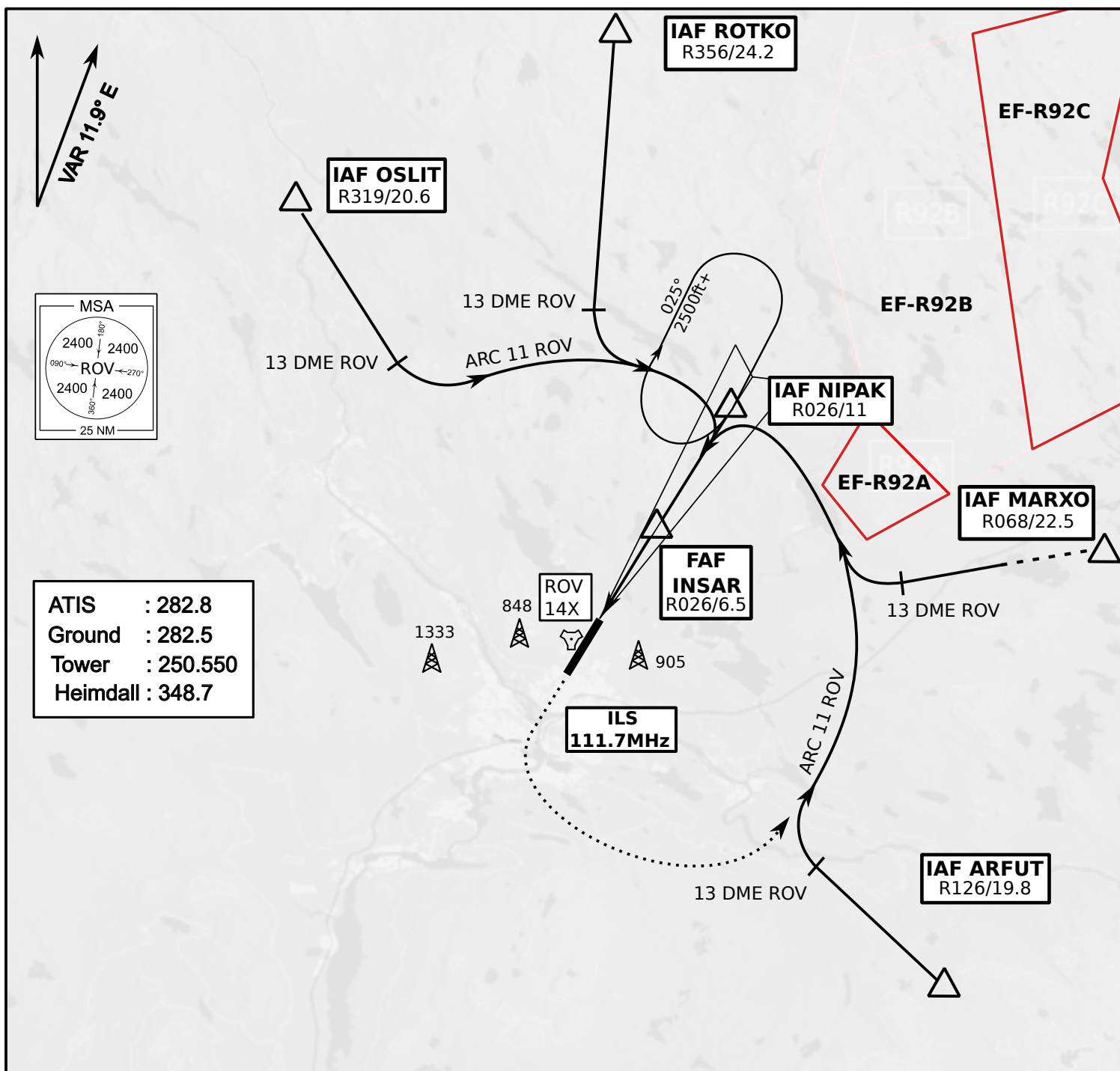
Visual Approach Jet

elev 643 ft

Rovaniemi, Finland



Vika	N66° 37.474 / E026° 13.557	Sierra	N66° 25.711 / E025° 46.610
Perun	N66° 44.135 / E026° 01.630	Imari	N66° 28.406 / E025° 31.291
Initial21	N66° 38.421 / E025° 58.682	Initial03	N66° 28.793 / E025° 44.105



OCA (H)	A	B	C	D
ILS CAT I	773 (164)	784 (175)	795 (186)	809 (200)
LOC	930 (320)			
LOC WO SDF	1260 (650)			
Circling	1120 (470)	1150 (510)	1300 (660)	1340 (690)

	kt	90	100	120	140	160
FAF - MAPt 5.4 NM	min:sec	3:36	3:14	2:42	2:19	2:01
Rate of descent	ft/min	480	530	640	740	850

Timing not authorized for defining the MAPt

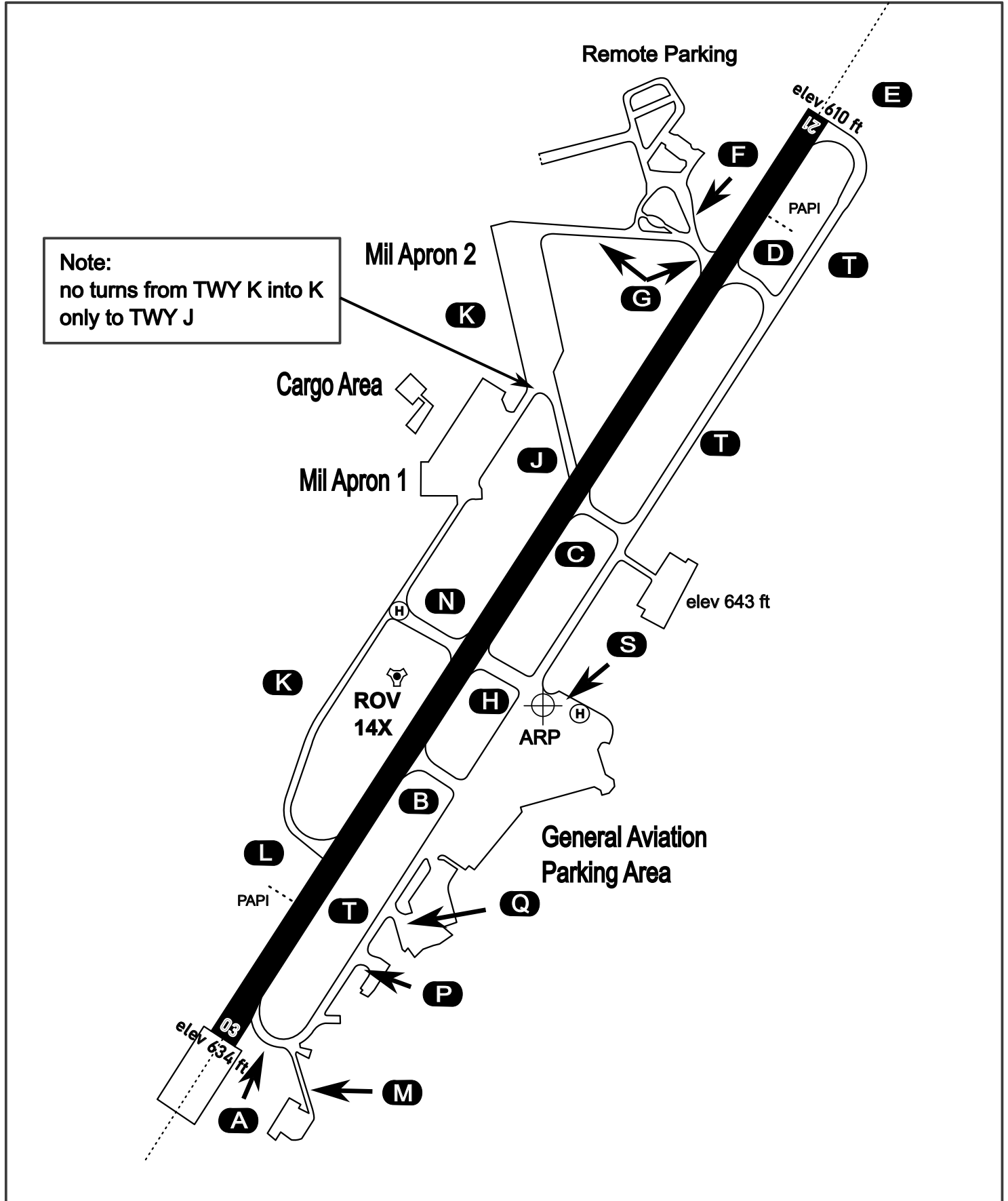
AERODROME CHART

Rovaniemi Aerodrome

ARP N66° 33' 42" E025° 49' 51"

elev 643 ft

ROVANIEMI, FINLAND



ATIS	Ground	Tower	Radar
282.800	282.500	250.550	348.700