

MISSION DATA CARD

OPORD		Callsign		Mission		Date/Time		
3770/2025		Monster 1		Training		202000MAR25		
Task	CAS					Freq		
AO	ESR04					132.15		
Departure				Recovery				
SID RWY 21				ILS RWY 21				
#	Callsign		Pilot		IFF	TCN	LSR	NET
-1	Monster 1-1		Toolface		1411	1Y	1611	21/01
-2	Monster 1-2		addiks		1412	64Y	1612	21/02
-3	Monster 1-3		Lenzi		1413	64X	1613	21/03

LOADOUT

A/A		GUN	
A/G		CHF	
POD		FLR	
TKS		FUEL	

TOLD

	Takeoff	Target	Joker	Bingo	Land
FUEL	11087				

AIRBASES

	Name	TCN	ATIS	GND	TWR	RWY	Elev	ILS
Dep	Rovaniemi	14X	282.8	282.5	250.55	21	643	111.7
Arr	Rovaniemi	14X	282.8	282.5	250.55	21	643	111.7

FLIGHTPLAN

#	Name	Navaid/Coords/DME	ALT	TOT
1	NEMGU	N66 20.400 E024 41.650		
2	CP	N65 39.175 E023		
3	T.ESR04.HQ	N65 48.554 E021 41.706		
4	ENOXI	N66 54.960 E021 38.780		
5	NAFFI	N67 04.630 E023 11.660		
6	IBSAN	N66 42.500 E025 01.083		
7	OSLIT	N66 51.750 E025 24.383		
8	NIPAK	N66 42.350 E026 06.083		
9	INSAR	N66 38.850 E025 59.333		

COMMS

Radio	Usage
1	132.15
2	2-4-16-2-4
3	35.50

OTHER FLIGHTS

Callsign	Mission	Airframe	Freq	TCN	Grpld	Laser
Raptor 1	Training	4x F-16C	134.0	1/64		162X
AO	ERN03	Task	BVR			
Rattler 6	Training	4x AH-64D	133.5	1/64		125X
AO	R92B	Task	Coop-Attack			
Tiger 3	Training	1x F/A-18C	261.15	1/64		155X
AO	ENR01	Task				

RADIO CHANNELS

#	Freq	Name
1		Flight/Squadron specific
2	282.8	Rovaniemi ATIS
3	282.5	Rovaniemi Ground
4	250.55	Rovaniemi Tower
5	320.7	Bodo ATIS
6	250.75	Bodo Tower
7	235.45	Kallax ATIS
8	250.3	Kallax Tower
9	265.0	Texaco-1 KC-135 Medium / Slow 71Y
10	319.8	Arco-1 KC-135 High / Fast 22Y
11	360.8	Shell-1 KC-135 MPRS High / Fast 41Y
12	304.0	CVN-71 Rough Rider (RRR) 71X
13	303.0	LHA-1 Tarawa (TWA) 79X
14	247.8	S-3B Mauler-1 (MAU) 64Y
15	347.8	Loki (E-2D)
16	348.7	Heimdall (E-3A)
17	242.17	ESR02 - CAS Range Operator
18	34.7	ESR02 - JTAC Odin
19	270.5	Blue
20	270.75	Red

RAMROD

0	1	2	3	4	5	6	7	8	9
F	L	A	M	I	N	G	O	E	S

KTC 1400 C

	0	1	2	3	4	5	6	7	8	9
A	VSAG	LMJ	DOK	YI	HB	EPU	QW	FT	CR	NX
B	CKSU	REQ	LBJ	PI	TH	AXM	DG	FV	YO	WN
C	FUWN	DQY	ITP	JX	GH	MVB	CE	SK	RA	LO
D	LAND	UXB	SRK	HG	QT	IEF	MW	JO	YV	PC
E	FDEG	JCH	SAM	TW	IV	KBP	NL	QY	UX	RO
F	TOIH	SUP	CDQ	YV	LB	WRK	NJ	MX	EG	AF
G	WBDV	SMN	QJH	RI	GP	CLK	EY	UF	OT	XA
H	IOHB	SXY	AMR	EN	PV	QJL	KG	DU	TF	CW
I	IBWV	OLY	SJA	UR	QP	DFM	XC	KH	EN	GT
J	UGVP	YMI	TFB	HC	SW	OLE	KD	AX	QN	RJ
K	VOTP	XHN	DIL	JE	MF	BKU	RG	AW	SQ	CY
L	TRMF	DHU	OPA	CG	KJ	ENX	SL	YV	WI	BQ
M	LTEF	AXM	KRQ	VO	WS	BHC	DI	JP	UY	NG
N	UBJW	LIV	FMS	QX	RD	PCN	YT	GO	EK	HA
O	VTXU	OEC	BFI	JG	YM	PKS	DQ	LN	WR	HA
P	RPQN	EJY	DKF	SH	TX	CUA	BW	VL	IG	MO
Q	EDNB	KTC	HAL	UV	MX	PWS	FJ	OR	YQ	IG
R	ULFO	VDR	WYJ	SC	AP	MNQ	GX	EI	HK	BT
S	HJTN	YPQ	AXE	OD	RC	GBL	FS	IU	KW	MV
T	HCWT	XMA	OFJ	GE	SU	IPK	BR	DN	QV	LY
U	LIFU	SGT	WQB	YC	EO	HAK	PV	MD	JX	RN
V	PUFX	HVB	TSR	QM	NG	DAJ	CL	YI	OK	WE
W	SCOI	PYG	NVH	AF	XK	BWJ	UL	TR	QE	DM
X	TRNJ	GBW	LFX	CP	MD	UQO	HI	EY	VA	KS
Y	XDWN	HUY	PRE	QF	LV	JSG	TC	KO	BI	MA

NAVAIDS

Id	Name	Channel	Position	Elevation
BOO	Bodo	45	N67 15.838 E014 20.046	43
BNK	Banak	47	N70 03.937 E024 58.181	17
OYA	Andoya	28	N69 17.175 E016 08.658	19

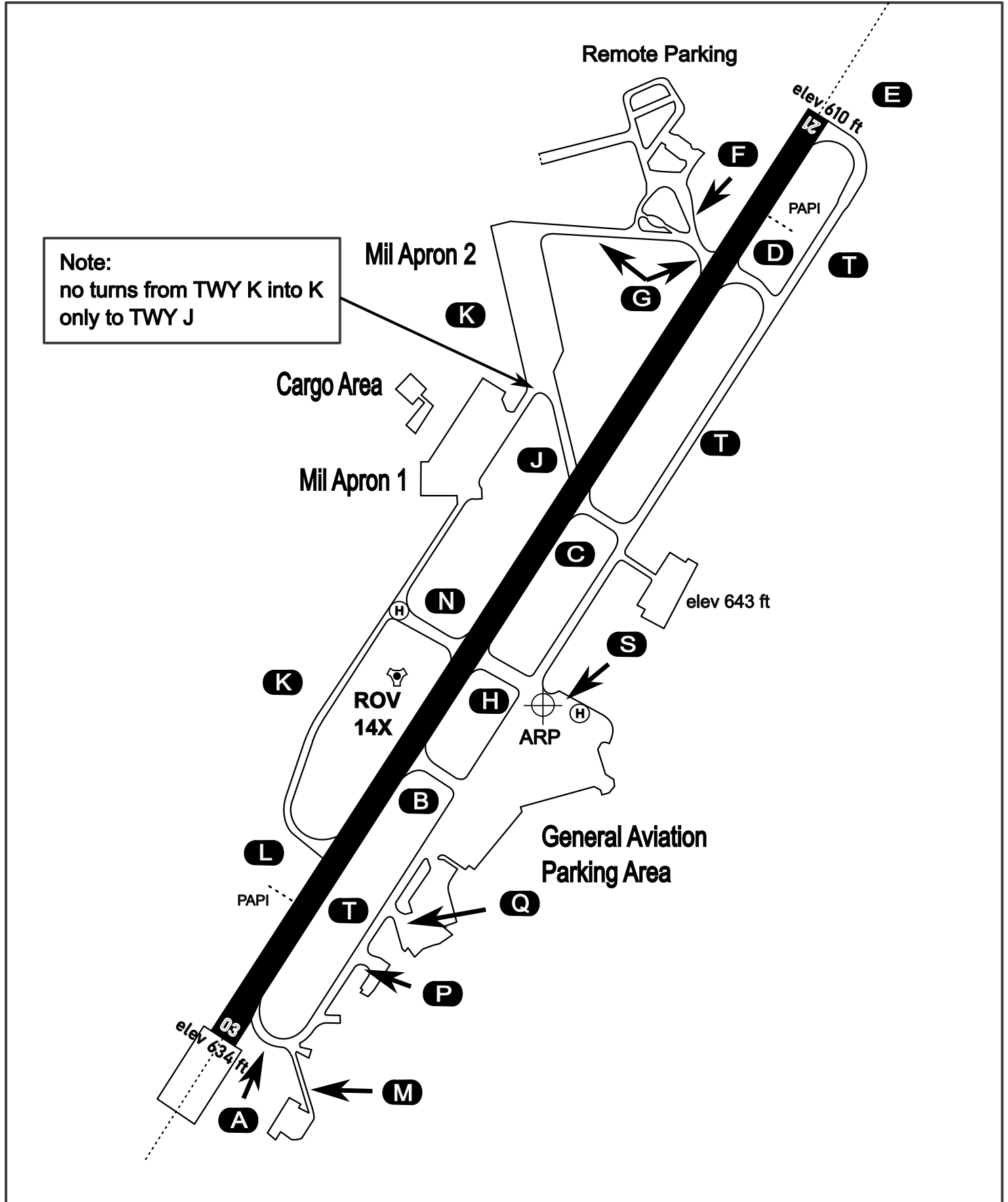
AERODROME CHART

Rovaniemi Aerodrome

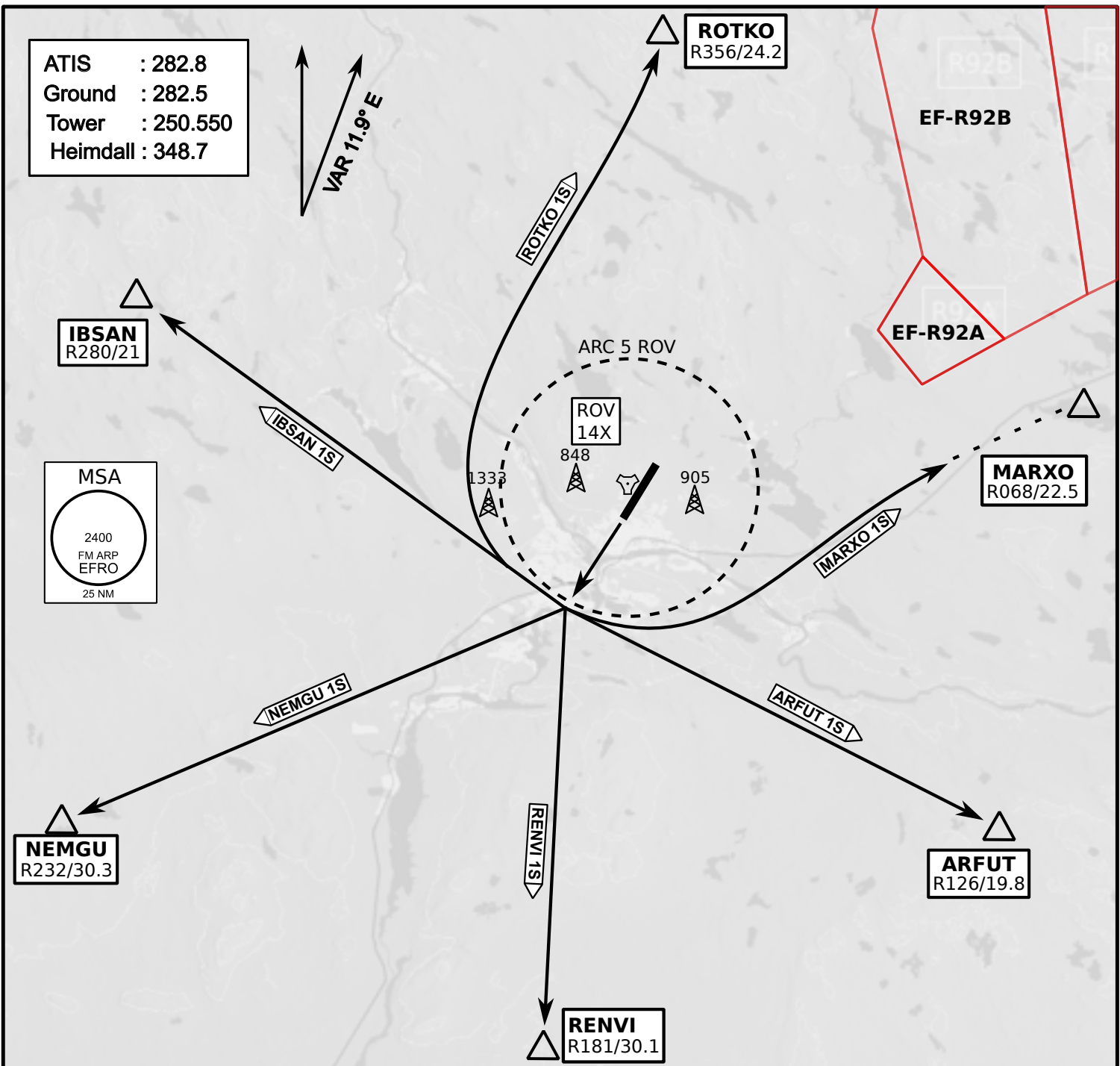
ARP N66° 33' 42" E025° 49' 51"

elev 643 ft

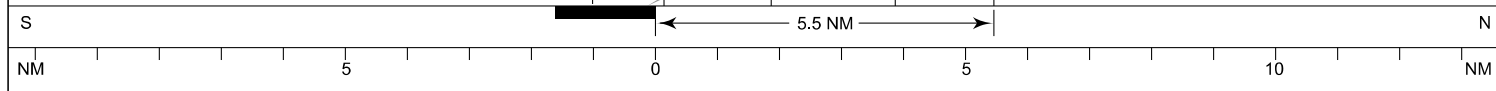
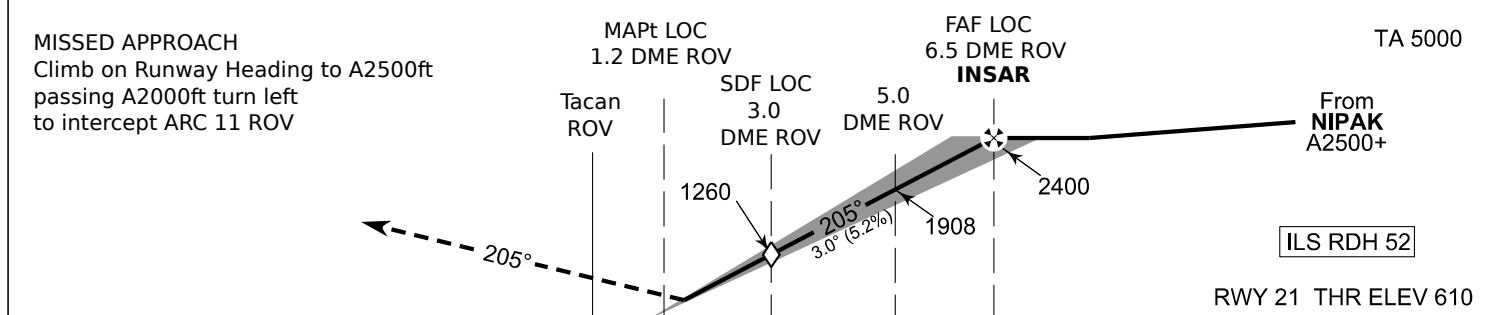
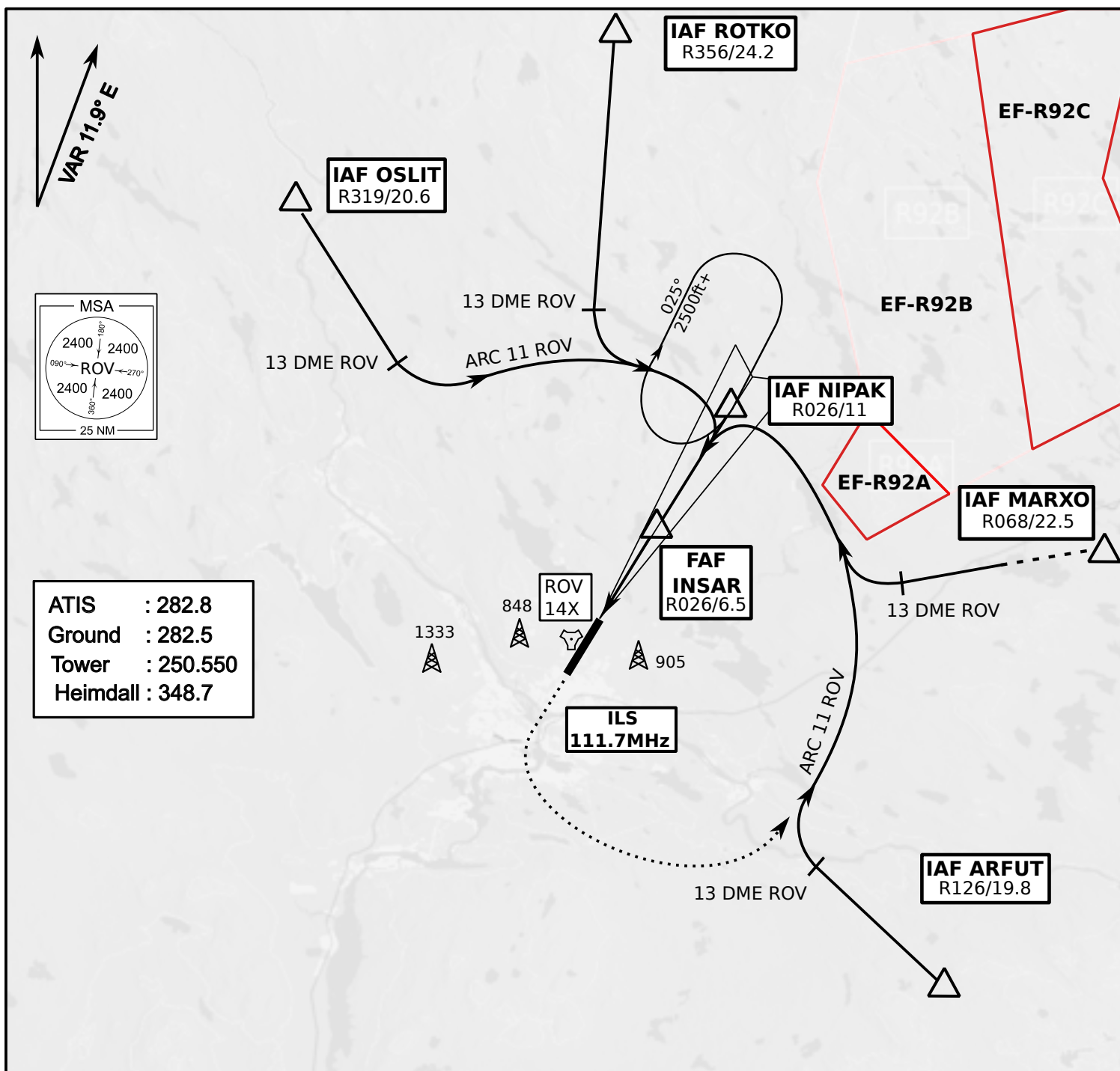
ROVANIEMI, FINLAND



ATIS	Ground	Tower	Radar
282.800	282.500	250.550	348.700



- Climb on Rwy heading to min A2000ft
- when passing A2000ft OR 5 DME ROV (whichever is later) turn direct exit point
- Stay outside ARC 5 ROV
- AB usage only if necessary for flight safety



OCA (H)	A	B	C	D
ILS CAT I	773 (164)	784 (175)	795 (186)	809 (200)
LOC	930 (320)			
LOC WO SDF	1260 (650)			
Circling	1120 (470)	1150 (510)	1300 (660)	1340 (690)

	kt	90	100	120	140	160
FAF - MAPt 5.4 NM	min:sec	3:36	3:14	2:42	2:19	2:01
Rate of descent	ft/min	480	530	640	740	850

Timing not authorized for defining the MAPt