

MISSION DATA CARD

OPORD		Callsign	Mission	Date/Time		
3764/2025		Nazgul 6	Training	172000MAR25		
Task	BVR Training				Freq	
AO	ENR01				262.45	
Departure			Recovery			
SID RWY 21			ILS RWY 21			
#	Callsign	Pilot	IFF	TCN	LSR	NET
-1	Nazgul 6-1	Striver	1161	1Y	1561	
-2	Nazgul 6-2	Tank	1162	64Y	1562	
-3	Nazgul 6-3	Repsus/Lempo	1163	64X	1563	

LOADOUT

A/A	6xA120C, 2xA9M	GUN	100% SAPHEI
A/G		CHF	120
POD	TGT, NAV	FLR	60
TKS	2xFT610	FUEL	100%

TOLD

	Takeoff	Target	Joker	Bingo	Land
FUEL	30518				4000

AIRBASES

	Name	TCN	ATIS	GND	TWR	RWY	Elev	ILS
Dep	Rovaniemi	14X	282.8	282.5	250.55	21	643	111.7
Arr	Rovaniemi	14X	282.8	282.5	250.55	21	643	111.7

FLIGHTPLAN

#	Name	Navaid/Coords/DME	ALT	TOT
1	IBSAN	N66 42.500 E025 01.083	12000	
2	NAFFI	N67 04.630 E023 11.660	25000	
3	SEPJA	N67 27.300 E021 12.080	25000	
4	LURAP	N69 05.560 E018 15.890	35000	
5	ORTEN	N70 00.140 E014 59.450	35000	
6	ENEXI	N69 20.040 E025 44.900	35000	
7	EVOLA	N68 30.860 E024 58.410	35000	
8	ROTKO	N66 57.633 E025 57.667	35000	

OTHER FLIGHTS

Callsign	Mission	Airframe	Freq	TCN	Grpld	Laser
Rattler 6	Training	4x AH-64D	133.5	1/64		125X
AO	R92B	Task	Coop-Attack			
Raptor 1	Training	4x F-16C	134.0	1/64		162X
AO	ESR01	Task	NIGHT SEAD			
Raptor 2	Training	4x F-16C	134.5	2/65		162X
AO	ESR01	Task	NIGHT SEAD			
Monster 1	Training	4x A-10C	132.15	1/64	24	141X
AO	CAS Range	Task	Combined Strike			
T-Rex 1	Training	4x A-10C	132.25	1/64	25	151X
AO	CAS Range	Task	Combined Strike			
Panther 3	DEAD	2x F/A-18C	261.15	1/64		155X
AO	ENR04	Task	STRIKE DEAD ESCORT			
Panther 5	Strike	4x F/A-18C	261.15	1/64		155X
AO	ENR04	Task	LOW LEVEL STRIKE			

RADIO CHANNELS

#	Freq	Name
1		Flight/Squadron specific
2	282.8	Rovaniemi ATIS
3	282.5	Rovaniemi Ground
4	250.55	Rovaniemi Tower
5	320.7	Bodo ATIS
6	250.75	Bodo Tower
7	235.45	Kallax ATIS
8	250.3	Kallax Tower
9	265.0	Texaco-1 KC-135 Medium / Slow 71Y
10	319.8	Arco-1 KC-135 High / Fast 22Y
11	360.8	Shell-1 KC-135 MPRS High / Fast 41Y
12	304.0	CVN-71 Rough Rider (RRR) 71X
13	303.0	LHA-1 Tarawa (TWA) 79X
14	247.8	S-3B Mauler-1 (MAU) 64Y
15	347.8	Loki (E-2D)
16	348.7	Heimdall (E-3A)
17	242.17	ESR02 - CAS Range Operator
18	34.7	ESR02 - JTAC Odin
19	270.5	Blue
20	270.75	Red

RAMROD

0	1	2	3	4	5	6	7	8	9
F	O	R	M	I	D	A	B	L	E

KTC 1400 C

	0	1	2	3	4	5	6	7	8	9
A	WRJT	GCF	QHL	MP	NK	BVE	OU	XI	AY	SD
B	KTXM	WLB	RAU	VH	CO	ISD	GN	FQ	YP	EJ
C	ARFX	MPV	SQJ	HB	LD	EOW	YI	GC	NK	UT
D	FAPM	HVO	KXE	YW	LT	CNR	IG	SU	DQ	JB
E	NFAD	MVO	LHK	XB	CP	WRT	IU	QE	SG	JY
F	BOQJ	WRS	XGN	PE	MK	YLF	HD	CU	IT	VA
G	WOYG	DQB	VAM	LR	XF	CKU	TP	SE	NJ	HI
H	NLGS	WJR	XIE	OM	BY	TQD	PH	VK	CA	UF
I	CWPB	QIM	FXR	EK	UH	AOG	VS	DT	LN	JY
J	VHCQ	RWF	TUE	NO	MA	SIB	XK	DP	GJ	YL
K	VPBW	XAU	DIS	RJ	MF	GET	HC	QL	NK	YO
L	KEXD	BTV	PLS	UH	NI	OCF	MJ	QW	RG	AY
M	XSUM	YOQ	PHT	BR	AW	NGL	JV	CI	KD	EF
N	UHLN	BJF	DVX	CP	OY	SKM	WR	IQ	TG	EA
O	CKOG	PLA	VIH	QR	JW	FYX	US	TN	ED	BM
P	AYIM	RXS	FVJ	QE	KG	LDT	UP	OC	HB	WN
Q	HWMD	GEA	UTY	BO	FQ	LSC	IV	XP	KR	JN
R	TNOR	HLV	GYI	UJ	DQ	EKP	FS	AB	MX	CW
S	WLFR	OSY	ACJ	GB	QU	IKP	EH	VN	MT	XD
T	IVBW	TCJ	QYS	RH	AO	NPK	XU	LE	MG	DF
U	KSQD	GNB	FWC	PX	LE	MOY	RU	HJ	AV	IT
V	CLBP	QXF	KRI	AJ	TN	MDS	EG	YU	WV	OH
W	EBIV	YLH	QKM	AP	RJ	DUW	NF	GO	ST	XC
X	GBRT	AMW	FPK	XC	DI	VNY	QE	SO	UH	JL
Y	EPAI	OQR	DSX	GH	LM	JUY	FW	VN	TK	BC

NAVAIDS

Id	Name	Channel	Position	Elevation
BOO	Bodo	45	N67 15.838 E014 20.046	43
BNK	Banak	47	N70 03.937 E024 58.181	17
OYA	Andoya	28	N69 17.175 E016 08.658	19

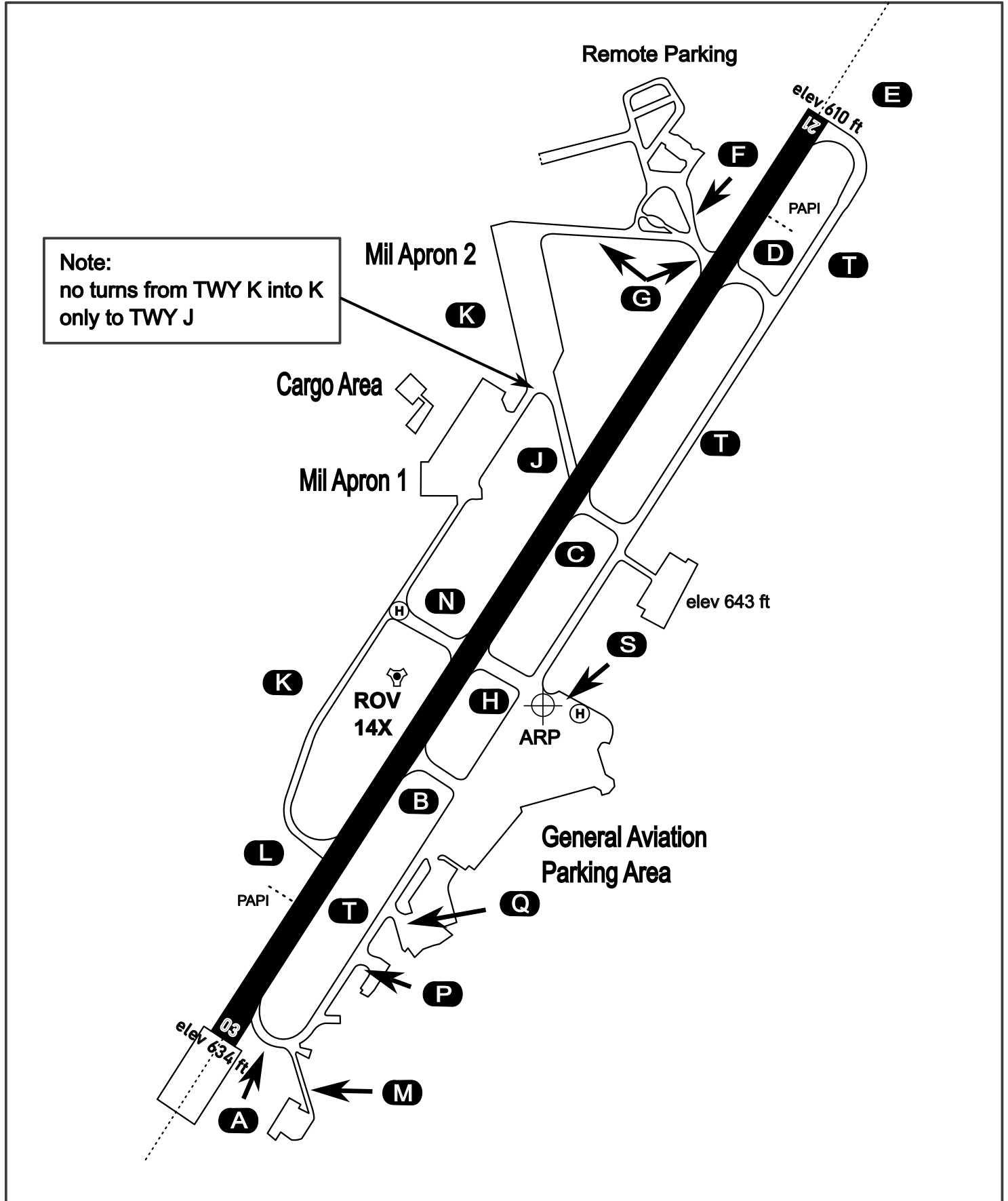
AERODROME CHART

Rovaniemi Aerodrome

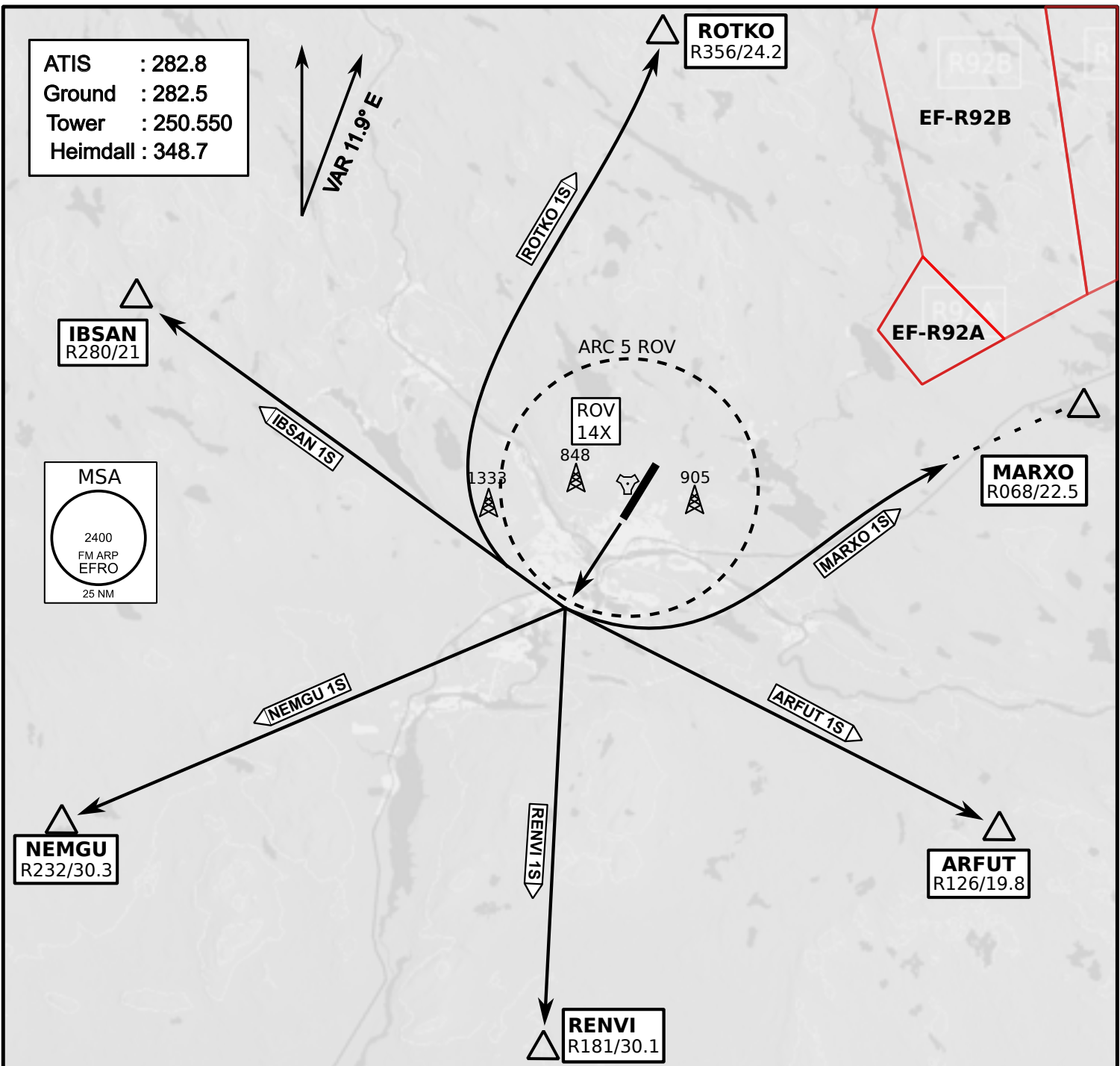
ARP N66° 33' 42" E025° 49' 51"

elev 643 ft

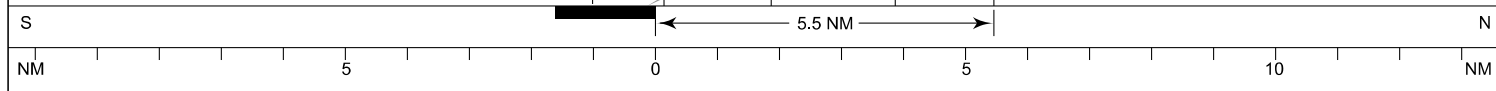
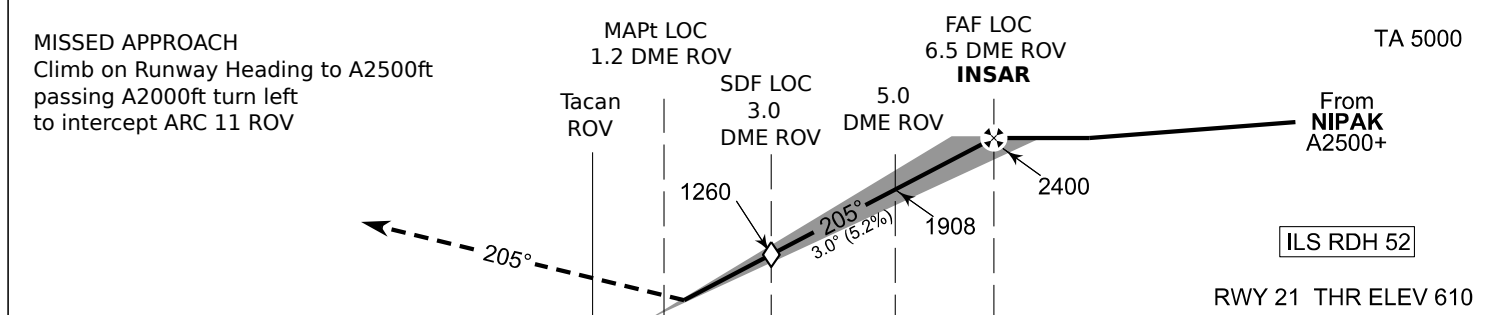
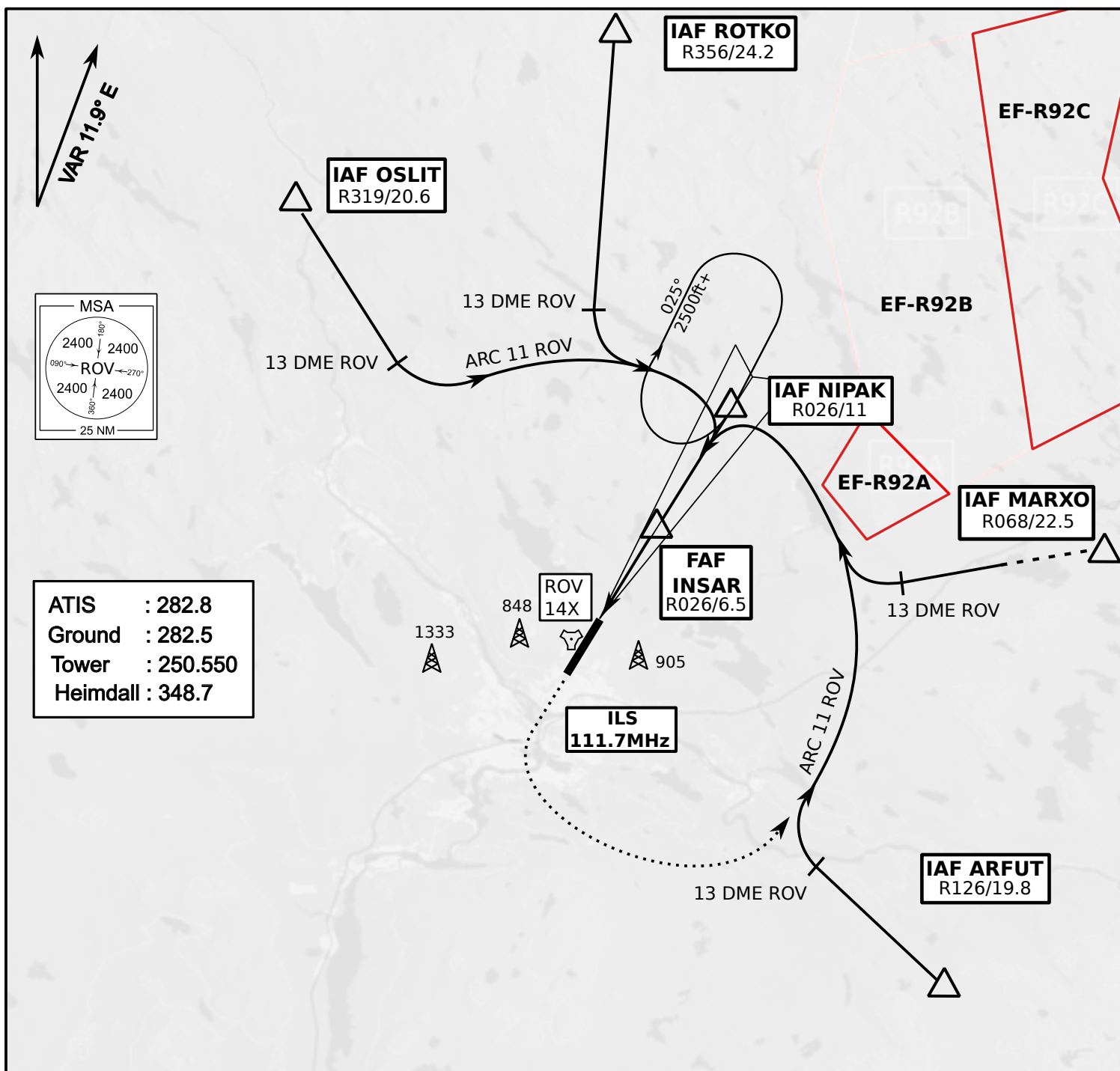
ROVANIEMI, FINLAND



ATIS	Ground	Tower	Radar
282.800	282.500	250.550	348.700



- Climb on Rwy heading to min A2000ft
- when passing A2000ft OR 5 DME ROV (whichever is later) turn direct exit point
- Stay outside ARC 5 ROV
- AB usage only if necessary for flight safety



OCA (H)	A	B	C	D
ILS CAT I	773 (164)	784 (175)	795 (186)	809 (200)
LOC	930 (320)			
LOC WO SDF	1260 (650)			
Circling	1120 (470)	1150 (510)	1300 (660)	1340 (690)

	kt	90	100	120	140	160
FAF - MAPt 5.4 NM	min:sec	3:36	3:14	2:42	2:19	2:01
Rate of descent	ft/min	480	530	640	740	850

Timing not authorized for defining the MAPt