

**MISSION DATA CARD**

OPORD		Callsign		Mission		Date/Time		
3758/2025		Tiger 1		DEAD		192000MAR25		
Task	ATO 1050 DEAD					Freq		
AO	Al Safira 260B280					261.15		
Departure				Recovery				
CAT				CASE I				
#	Callsign		Pilot		IFF	TCN	LSR	NET
-1	Tiger 1-1		Ghost		1011	1Y	1551	01/01

**LOADOUT**

A/A	2xA9X, A120C				GUN	100% HEI-T	
A/G	4xG38				CHF	90	
POD	TGP				FLR	30	
TKS	2xFPU-8A				FUEL	100%	

**TOLD**

	Takeoff	Target	Joker	Bingo	Land
FUEL	15291	8000		6000	2000

**AIRBASES**

	Name	TCN	ATIS	GND	TWR	RWY	Elev	ILS
Dep	CVN-73 USS G. Washington	55X		ICLS 12	304.0			
Arr	CVN-73 USS G. Washington	55X		ICLS 12	304.0			
Div	Incirlik AFB	21X	377.47 5	371.35	360.1	5	190	

**FLIGHTPLAN**

#	Name	Navaid/Coords/DME	ALT	TOT
1	ReGrroup	N37 04 43.603 E036 28 38.662	23000	
2	Hold	N36 58 13.841 E037 12 50.426	27000	
3	IP	N36 23 00.054 E037 31 00.628	27000	
4	TGT SA2	N36 04 14.066 E037 20 28.625	1224	
5	TGT AAA	N36 02 37.894 E037 20 23.681	1509	
6	Fence Out	N36 57 45.501 E037 12 37.955	27000	
7	RTB	N36 53 44.440 E036 14 36.263	23000	
8	CVN73	N35 52 05.218 E034 01 04.193	500	

**COMMS**

Radio	Usage
1	4(CVN), 12 (OV), 8/9(Shell), 12(OV), 4(CVN)
2	MIDS A:1 / B:44 Tiger
3	MIDS A:9 / B:44 Lion
4	Shell 1 248.8 (12Y) / Shell 2 249.8 (13Y)

## NOTES

-----  
ATO#: 1050[?]  
STATUS:  
CLSGN: Tiger 1  
SLOT: Tiger 1  
PCKGE:  
A/F: CVN-73  
DIVERT: Incirlik[?]  
MSN: DEAD  
AC: F/A-18C  
MIN/MAX: 2/4  
AO: AL-Safirah  
AOR:  
INGRESS/EGRESS: via CW  
CLEARANCE: By SEAD Raptor-1  
STP-TIME:  
T/O: STP+  
CAT: 1 - 4  
TOT: STP+  
VUL: DEAD & Strike Push nachdem SA-2 suppressed  
ALTBL: 260B280

-----  
Raptor-1 130.5 (SEAD)  
Tiger-1[?]MIDS 1 (DEAD)  
Lion-2[?]MIDS 9 (STRIKE)  
Raptor-3 130.7 (STRIKE)  
Overlord 377.8 (AWACS)  
Wizard 355.6 (GROUND)  
Texaco 1 248.7 (11Y) (AAR)  
Shell 1[?]48.8 (12Y) (AAR MPRS)  
Shell 2[?]49.8 (13Y) (AAR MPRS)  
ALR: MED

-----  
Threats AO 1050:  
Ground: SA-2, SA-3, AAA  
Air: MiG-21, MiG-25

-----  
Weather:  
Time : 24.08.2013, 05:30 lcl / 03:30Z  
Clouds : Light SCT / BKN 13780ft  
Wind : 0ft 6/239 , 1600ft 14/2390 , 6600ft 14/218 , 26000ft 22/254  
QNH: 3001

**SUPPORT****AWACS**

Callsign

Freq

ALT

Pos

OVERLORD2

377.8

FL320

N3713 E03643 - N3714 E03749

**RADIO CHANNELS**

#	Freq	Name
1		Flight/Squadron specific
2	288.2	Akrotiri ATIS
3	240.1	Akrotiri Ground
4	339.85	Aktrotiri Tower
5	335.05	Akrotiri Approach
6	360.1	Incirlik Tower
7	371.35	Incirlik Ground
8	377.475	Incirlik ATIS
9		No Preset
10	127.3	Paphos ATIS
11	353.8	Paphos Tower
12	304.0	CVN-73 George Washington
13	302.0	LHA-1 Tarawa
14	259.0	CV-59 Forrestal
15		No Preset
16	377.8	Overlord
17	265.0	KC-135 Texaco-1 medium/slow
18	319.8	KC-135 Arco-1
19	360.8	KC-135MPRS Arco-2
20	256.0	S-3B Recovery Tanker

**RAMROD**

0	1	2	3	4	5	6	7	8	9
S	C	H	E	D	U	L	I	N	G

**KTC 1400 C**

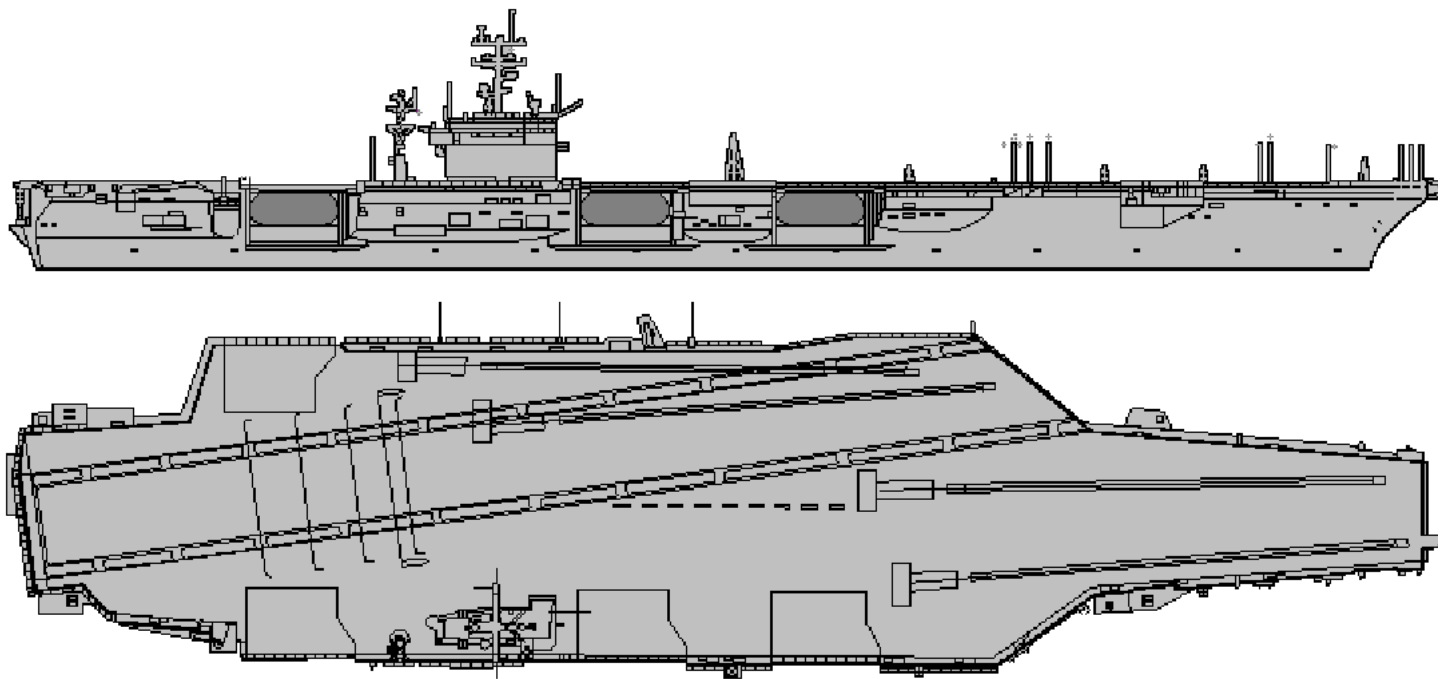
	0	1	2	3	4	5	6	7	8	9
A	XQDE	AOM	YTP	UC	BL	RGW	FK	NV	IJ	SH
B	UPVO	SAN	IRM	LH	XB	KJG	FE	DQ	YC	WT
C	FIMS	WLR	BNG	QO	KJ	PHY	UX	DC	AV	ET
D	ERFW	JSV	QOM	LI	YT	GBX	CD	UH	AN	KP
E	KNCB	OQA	ITH	PU	RG	XVM	WF	JD	YS	EL
F	IRDS	KJV	CHL	OF	BX	MGY	AW	NT	UE	QP
G	MEQG	IRF	SXC	YT	PO	ALD	BW	HN	UJ	KV
H	AUBP	GRY	LSJ	MW	DQ	CNX	TH	KI	EO	FV
I	XIMN	AGT	RPQ	WS	BV	EKC	UL	YF	OJ	HD
J	KOLE	FQT	WIV	JA	DN	RCS	MY	HX	UB	GP
K	XNDO	YPW	FGR	KS	IE	ALC	QM	UH	TV	BJ
L	DPFE	RNH	CBY	KJ	US	XWL	VQ	MA	OT	IG
M	PRUJ	QBG	EVH	FY	DX	NTC	OS	IM	KL	AW
N	VCRX	GYL	EBJ	NT	UD	FWS	KA	PH	MI	QO
O	YLTV	GND	IKF	SH	CP	EUQ	MX	OW	JB	RA
P	NFEY	XRG	HSB	DA	IU	LMO	WQ	PK	CJ	VT
Q	SANU	BVI	FCX	QD	MY	HGK	JT	LO	PE	RW
R	HOUN	KPQ	DLJ	AY	CX	MBR	EW	GF	VI	ST
S	BUFL	GTW	OJN	AE	PS	YXI	CQ	HR	DV	KM
T	LODM	EVC	QXP	KG	FY	HNI	SU	RW	JT	AB
U	UOIH	MPA	SKN	BQ	JW	CEY	FX	RD	GT	LV
V	CTVB	KWQ	ILR	FN	UY	APS	DO	MG	JX	HE
W	INWY	AVT	EJU	FR	SK	HOQ	PB	DL	GC	MX
X	KSXU	JWF	RBP	MQ	YL	HOE	CT	IG	AD	VN
Y	DFSX	BTG	UKH	MR	AI	JEW	LO	PV	CY	QN

**NAVAIDS**

<b>Id</b>	<b>Name</b>	<b>Channel</b>	<b>Position</b>	<b>Elevation</b>
DAN	Incirlik	21	N37 00.950 E035 26.883	243
AKR	Akrotiri	107	N34 34.765 E032 57.769	147
PHA	Paphos	79	N34 42.997 E032 28.963	35
RMD	Ramat David	84	N32 39.892 E035 11.265	136
OS66	Kuweires Military Aviation Institute	36	N36 11.362 E037 34.226	1200









ATIS  
377.475 (#8)

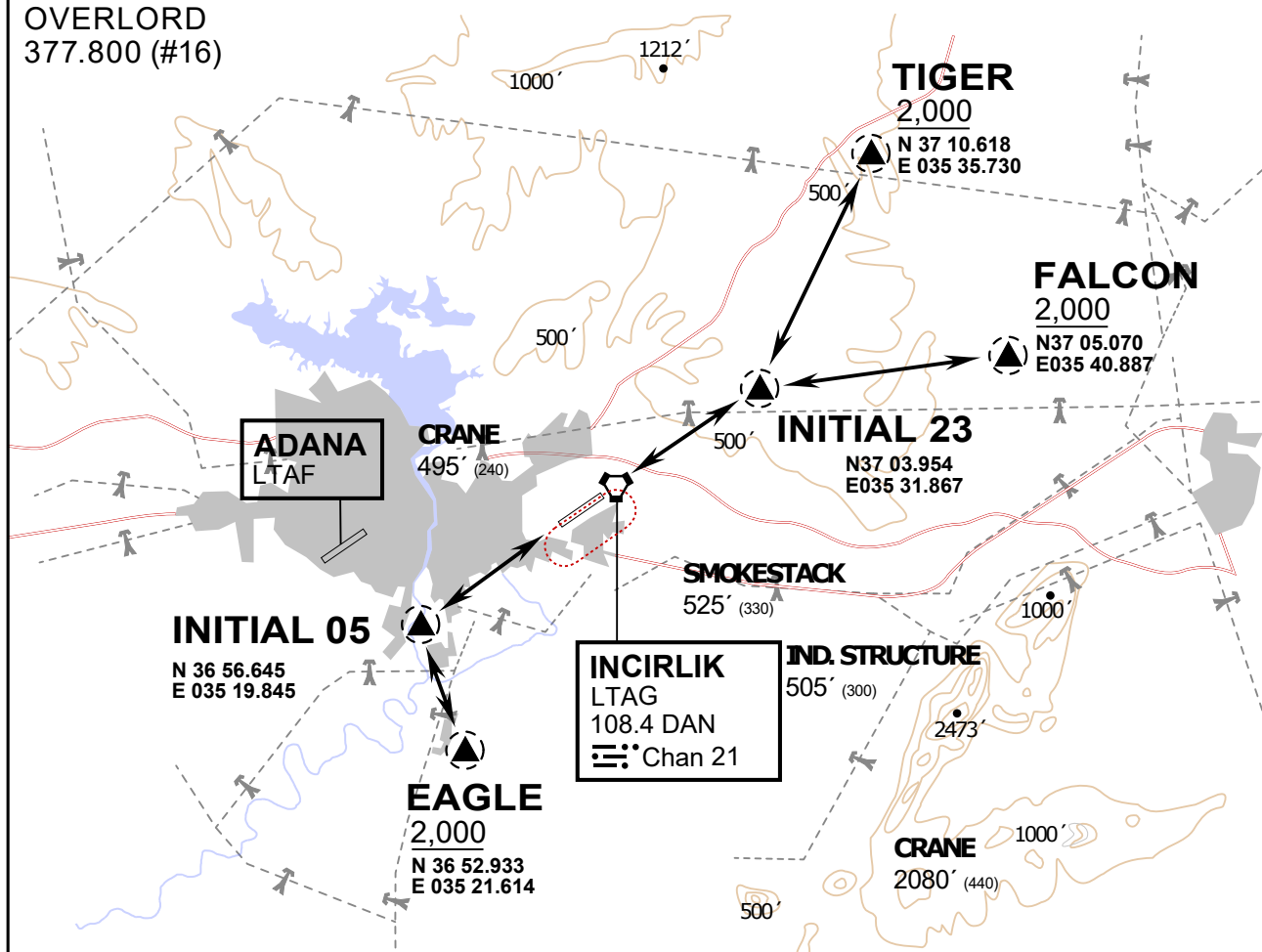
INCIRLIK GROUND  
371.3500 (#7)

INCIRLIK TOWER  
360.100 (#6)

OVERLORD  
377.800 (#16)

NOT FOR CIVIL USE

CAUTION: If unable to comply  
with restrictions advise ATC  
prior to departure.



vJaBoG32 ETTR NAV CHART



### ARR / DEP ROUTE DESCRIPTION

#### STRAIGHT-IN RWY 05 / 23

Pass entry EAGLE / TIGER / FALCON at 2000' and INITIAL at 1500'

#### OVERHEAD BREAK RWY 05 / 23

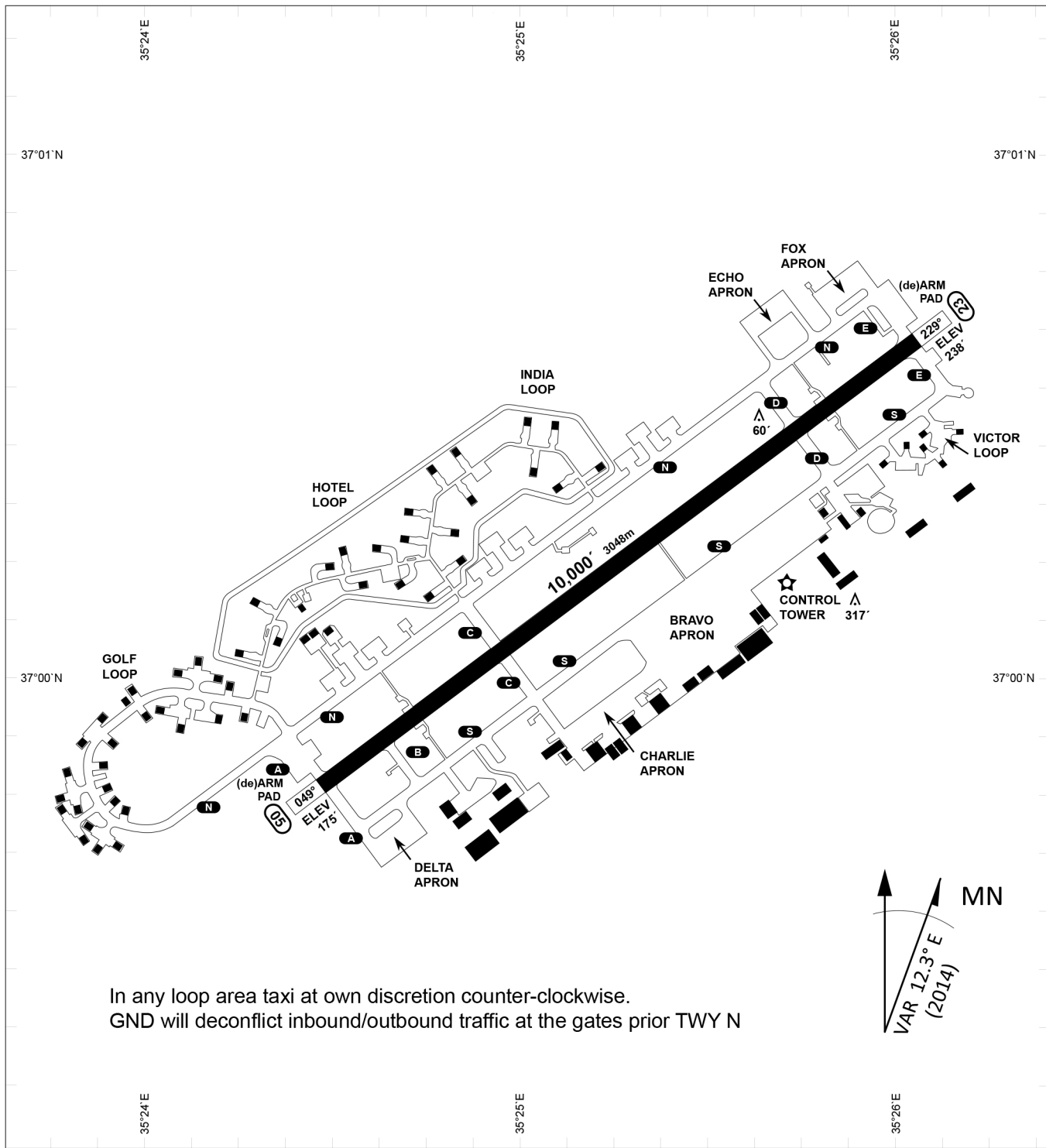
Pass entry EAGLE / TIGER / FALCON at 2500',  
pass INITIAL at 2000' break to the south at 2000' pattern altitude.

#### HELICOPTER ROUTES

Pass entry EAGLE / TIGER / FALCON at 1000' or below, pass INITIAL at 1000' break to the south at 1000' pattern altitude.

#### DEPARTURE ALL DIRECTIONS

pass DER below 1500ft



In any loop area taxi at own discretion counter-clockwise.  
 GND will deconflict inbound/outbound traffic at the gates prior TWY N

PAR	RWY	CAT	MINIMA	ARP	ELEV	Scale 1:35'500 0 300 600 900 1200 1500 [m] 0 1000 2000 3000 4000 5000 [ft]
	21L	A B D E	2057 - 0.8 200 (200-0.8/1.6) GS 3°	37°0'56.000" N	1857 [ft]	
SRA	3R	A B D E	2057 - 0.8 200 (200-0.8/1.6) GS 3°	35°26'53.000" E	566 [m]	
	21R	A C D E	2257 - 1.2 350 (350-1.2/1.6)			
	3L	A C D E	2257 - 1.2 350 (350-1.2/1.6)			

RWY	TORA	TORA from D	TORA from B	COURSE	PSN THR	ALS
23	10,000 [ft] 3048 [m]	8,000 [ft] 2438 [m]		235°	37°00.611'N 035°26.368'E	⊙
05	10,000 [ft] 3048 [m]		9,000 [ft] 2743 [m]	055°	36°59.043'N 035°24.760'E	⊙

ATIS	INCIRLIK GROUND	INCIRLIK TOWER	CONTROL	TACAN	ILS RWY 05	ILS RWY 23
377.475	371.350   123.020	360.100   121.100	337.800	DAN21x	109.3MHz	111.7MHz