

MISSION DATA CARD

| | | | | | | | | |
|-----------|-----------------------------|-----------|----------|----------|------|-------------|------|-------|
| OPORD | | Callsign | | Mission | | Date/Time | | |
| 3756/2025 | | Monster 1 | | CAS | | 141900MAR25 | | |
| Task | Air Assault Minakh Airfield | | | | | Freq | | |
| AO | Minakh Airfield | | | | | 132.15 | | |
| Departure | | | | Recovery | | | | |
| VFR | | | | VFR | | | | |
| # | Callsign | | Pilot | | IFF | TCN | LSR | NET |
| -1 | Monster 1-1 | | Toolface | | 1411 | 16Y | 1611 | 21/01 |
| -2 | Monster 1-2 | | addiks | | 1412 | 79Y | 1612 | 21/02 |

LOADOUT

| | | | | | | |
|-----|-----------------------|--|--|--|------|---------|
| A/A | 2xA9L | | | | GUN | 100% CM |
| A/G | 2xA65G, 4xG54, 7M282L | | | | CHF | 0 |
| POD | TGP | | | | FLR | 480 |
| TKS | | | | | FUEL | 100% |

TOLD

| | | | | | |
|------|---------|--------|-------|-------|------|
| | Takeoff | Target | Joker | Bingo | Land |
| FUEL | 11087 | | | | |

AIRBASES

| | | | | | | | | |
|-----|--------------|------|-------------|--------|--------|-----|------|-------|
| | Name | TCN | ATIS | GND | TWR | RWY | Elev | ILS |
| Dep | Incirlik AFB | 21X | 377.47 5 | 371.35 | 360.1 | 5 | 190 | |
| Arr | Incirlik AFB | 21X | 377.47 5 | 371.35 | 360.1 | 5 | 190 | |
| Div | Akrotiri AFB | 107X | 288.2 | 240.1 | 339.85 | 28 | 62 | 109.7 |

COMMS

| Radio | Usage |
|-------|---|
| 1 | Monster1 132.15; Demon4 132,55; Joker1 133.75 |
| 2 | 1, 2, 3, 13 AO: 345.6, 1, 3, 2 |
| 3 | Grizzly 40.50; Playboy 41.50 |

NOTES

Texaco1 6 248.7 11Y
Texaco2 7 249.7 14Y
Arco2 11 263.5 42Y

ATO 1020 Minakh Air Assault Traffic Update GT01

All Grids: 37S
IP AFRIN: CA 09 42 / N36°30 E36°52
IP KILIS: CA 30 66
BP SHERWOOD: CA 21 44
BP AZAZ: CA 25 51
Minakh LZ: CA 245 433 / N36°31.13 E37°02.40

Expecting 5 Flights in the AO

Rattler 5-1 + Rattler 5-2, 2 x AH-64D, IP AFRIN, Ground - Cherubs 10, Expect Routing to BP AZIZ AZAZ for JTAC Playboy

Monster 1, 4 x A-10C, IP AFRIN, Angels 5 - Angels 12, Expect IP AFRIN with JTAC Grizzly

Demon 4, 4 x A-10C, IP AFRIN, Angels 13 - Angels 20, Expect IP Kiliz for JTAC Playboy

Rattler 5-3 + Rattler 5-4, 2 x AH-64D, IP AFRIN, Ground - Cherubs 10, Expect Routing to BP Sherwood for JTAC Grizzly

Joker 1, (1 or 2) x CH-47F, IP AFRIN, Ground - Cherubs 10, Expect Holding at IP AFRIN until cleared to Infil at LZ Minakh

ATO 1020 Minakh Air Assault Situation Update GS01

Threats:

SA-2 and SA-3, South of AO

Expecting Soviet Era Short and Medium Range Radar and IR SAMs (SA-8, SA-9, SA-13), MANPADs (SA-18), Radar and Optical Guided AAA (Zu-23, ZSU-23, Zu-57)

Target: All Ground Based Air Defenses, Infantry Fighting Vehicles and other assets that pose a threat to Joker 1 helicopters

Friendlys are 2 x Recon units:

Grizzly, 500 Meters Northwest of Minakh Airfield in a residential area

Playboy, 400 Meter North by Northeast of Minakh Airfield in a Residential Area

No Artillery Support

Clearance Authority:

Rattler 5-1 + Rattler 5-2, Demon 4: Expect Clearance by JTAC Playboy

Rattler 5-3 + Rattler 5-4, Monster 1: Expect Clearance by JTAC Grizzly

Joker 1: Expect Clearance by JTAC Grizzly

Ordnance Request: PGM, Anti-SAM, Anti-AAA, Anti-MBT, Gun, HE Rockets

Restrictions:

All Rattlers, all Jokers: Expect all RW assets initially holding at IP AFRIN at GND - Cherubs 10, request visual separation;

FW assets dropping Low-Level near IP AFRIN for SAM-Avoidance: Expect RW assets holding Low-Level at IP AFRIN during entire VUL period

Hazards: -

Remarks:

Check In with JTAC Grizzly FM 40.5, Monitor AO 345.6 UHF

Call all Rifle Shots/SAM Launches/Threats at AO Freq

OTHER FLIGHTS

| Callsign | Mission | Airframe | Freq | TCN | Grpld | Laser |
|-----------|-------------------|------------|----------------------------|------|-------|-------|
| Nazgul 1 | Strike | 4x F-15E | 131.65 | 1/64 | | 156X |
| AO | Syria | Task | ATO 1030 - Southern Target | | | |
| Tiger 1 | DEAD | 4x F/A-18C | 261.15 | 1/64 | 1 | 155X |
| AO | Al Safira 260B280 | Task | ATO 1050 DEAD | | | |
| Joker* 1 | Transport | 4x CH-47F | 133.75 | 1/64 | | 170X |
| AO | | Task | | | | |
| Raptor 1 | SEAD | 4x F-16C | 130.5 | 1/64 | | 162X |
| AO | Al Safira | Task | ATO 1050 SEAD | | | |
| Knight* 6 | Strike | 4x F/A-18C | 264.05 | 1/64 | | 170X |
| AO | Aleppo | Task | ATO1010 | | | |
| Rattler 5 | Training | 4x AH-64D | 133.5 | 1/64 | | 125X |
| AO | ATO 1020 | Task | CAS | | | |
| Raptor 3 | Strike | 2x F-16C | 130.7 | 5/68 | | 169X |
| AO | Al Safira | Task | ATO 1050 STRIKE | | | |
| Raptor 7 | Training | 4x F-16C | 129.3 | 1/64 | | 170X |
| AO | Mako 6 | Task | ATO 1060 | | | |
| Devil* 4 | CAS | 4x A-10C | 132.55 | 1/64 | | 164X |
| AO | Minakh AB | Task | ATO 1020 CAS | | | |
| Panther 3 | Training | 4x F/A-18C | 261.35 | 1/64 | | 157X |
| AO | ATO1010 | Task | SEAD | | | |

RADIO CHANNELS

| # | Freq | Name |
|----|---------|-----------------------------|
| 1 | | Flight/Squadron specific |
| 2 | 288.2 | Akrotiri ATIS |
| 3 | 240.1 | Akrotiri Ground |
| 4 | 339.85 | Aktrotiri Tower |
| 5 | 335.05 | Akrotiri Approach |
| 6 | 360.1 | Incirlik Tower |
| 7 | 371.35 | Incirlik Ground |
| 8 | 377.475 | Incirlik ATIS |
| 9 | | No Preset |
| 10 | 127.3 | Paphos ATIS |
| 11 | 353.8 | Paphos Tower |
| 12 | 304.0 | CVN-73 George Washington |
| 13 | 302.0 | LHA-1 Tarawa |
| 14 | 259.0 | CV-59 Forrestal |
| 15 | | No Preset |
| 16 | 377.8 | Overlord |
| 17 | 265.0 | KC-135 Texaco-1 medium/slow |
| 18 | 319.8 | KC-135 Arco-1 |
| 19 | 360.8 | KC-135MPRS Arco-2 |
| 20 | 256.0 | S-3B Recovery Tanker |

RAMROD

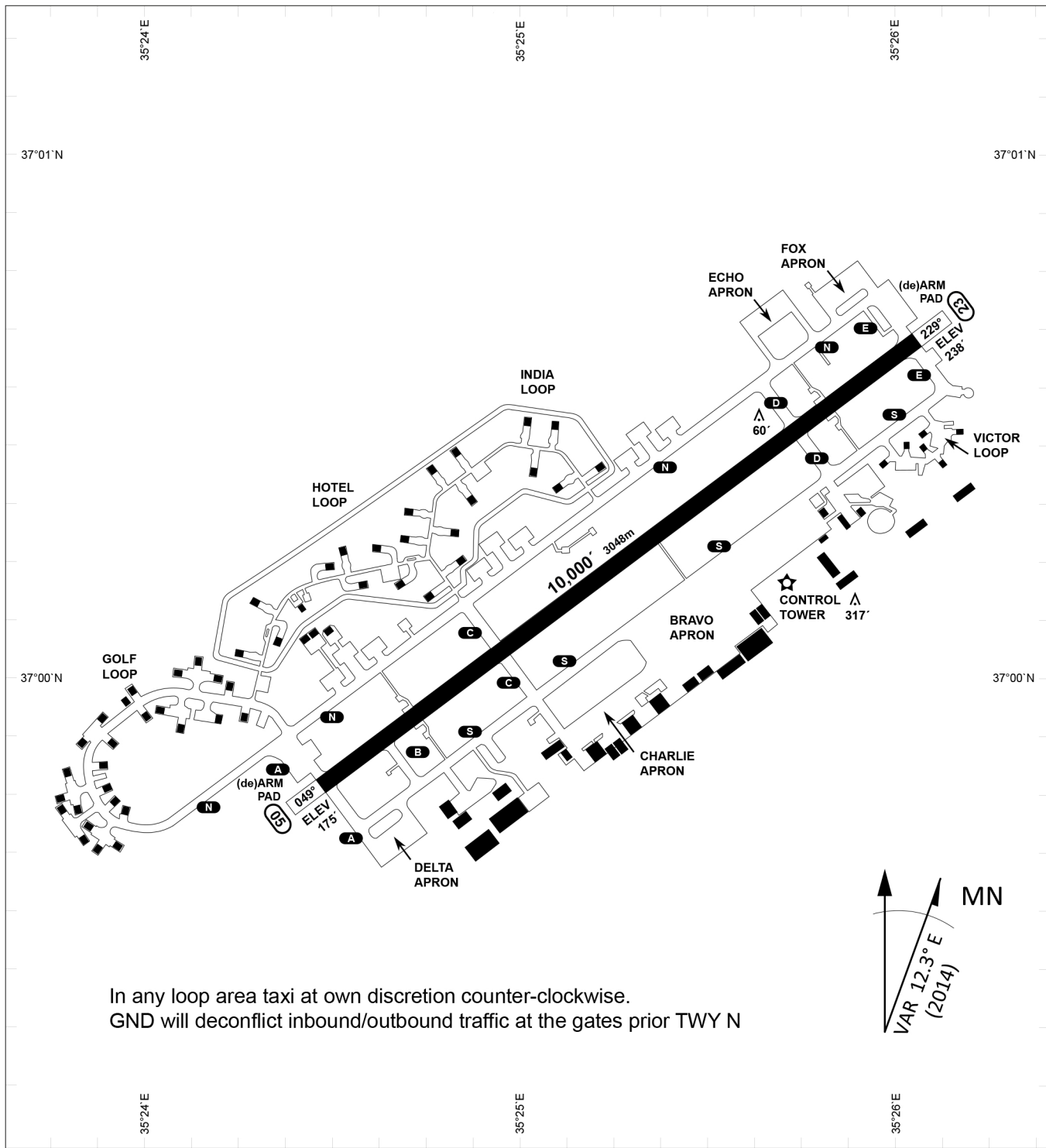
| | | | | | | | | | |
|---|---|---|---|---|---|---|---|---|---|
| 0 | 1 | 2 | 3 | 4 | 5 | 6 | 7 | 8 | 9 |
| H | A | R | M | O | N | I | Z | E | D |

KTC 1400 C

| | 0 | 1 | 2 | 3 | 4 | 5 | 6 | 7 | 8 | 9 |
|---|------|-----|-----|----|----|-----|----|----|----|----|
| A | TBDY | AVR | XPJ | GQ | UE | MWO | HN | CS | LF | KI |
| B | ASJQ | FKB | RIU | GW | HO | EVX | LM | NT | CP | YD |
| C | THXB | YUK | PLS | MG | DW | QAR | EV | IF | CO | JN |
| D | AOBG | RSW | KUH | LJ | DC | IQN | PM | XT | VY | FE |
| E | PEBF | JVX | KQL | CN | TW | OGY | AH | UR | SI | DM |
| F | YPXL | MNK | FWA | QS | IE | DTB | HU | VR | JG | CO |
| G | MLJR | KCQ | EUT | YB | PI | HXW | GA | FS | DV | NO |
| H | IHQU | JYT | BVC | RP | GE | MDF | LO | SX | NW | AK |
| I | NKBH | IDE | YTS | XU | WV | RJF | MG | LP | OQ | CA |
| J | OPQK | IHN | RJB | MU | WD | CEA | LY | VS | GT | XF |
| K | UOEY | GFX | PRH | QK | SI | BDJ | CN | VW | LT | AM |
| L | KBRG | WFS | UXL | VO | EC | PDM | YA | HQ | NI | TJ |
| M | GLHO | MKU | SCW | VP | ED | QRB | FY | TJ | IN | AX |
| N | KYEH | BUC | MTO | XG | VS | WPL | IN | FD | QR | JA |
| O | UNPA | KQR | TJW | HD | YG | FLM | OI | VC | SB | EX |
| P | YCSO | LGW | QBE | FT | MX | DUK | JA | HV | IP | RN |
| Q | WDCS | QVY | UPT | BI | XK | GOR | HJ | NE | FA | ML |
| R | CIYJ | DGV | BUQ | NH | OE | APF | SL | RM | TX | WK |
| S | KPGF | OIU | TQY | DL | XH | CWA | EJ | BM | RS | NV |
| T | IHPL | WAT | XMG | QC | JB | EOK | UF | RN | SV | YD |
| U | IRHL | USD | KCY | OG | FW | XME | VN | QA | TB | PJ |
| V | JISG | AWX | OBU | TH | LK | MYF | RQ | EV | DP | CN |
| W | TEXD | RNF | KGQ | JU | MV | IAC | LP | WO | SH | BY |
| X | TOGA | SWM | HIL | YQ | FN | EUC | PB | JX | RD | KV |
| Y | JXYT | IEB | NRH | GP | WL | UMO | SQ | FV | KA | DC |

NAVAIDS

| Id | Name | Channel | Position | Elevation |
|-----------|---|----------------|------------------------|------------------|
| DAN | Incirlik | 21 | N37 00.950 E035 26.883 | 243 |
| AKR | Akrotiri | 107 | N34 34.765 E032 57.769 | 147 |
| PHA | Paphos | 79 | N34 42.997 E032 28.963 | 35 |
| RMD | Ramat David | 84 | N32 39.892 E035 11.265 | 136 |
| OS66 | Kuweires Military Aviation Institute | 36 | N36 11.362 E037 34.226 | 1200 |



In any loop area taxi at own discretion counter-clockwise.
 GND will deconflict inbound/outbound traffic at the gates prior TWY N

| | | | | | | |
|-----|-----|---------|------------------------------------|-----------------|-----------|--|
| PAR | RWY | CAT | MINIMA | ARP | ELEV | Scale 1:35'500 0 300 600 900 1200 1500 [m] 0 1000 2000 3000 4000 5000 [ft] |
| | 21L | A B D E | 2057 - 0.8 200 (200-0.8/1.6) GS 3° | 37°0'56.000" N | 1857 [ft] | |
| SRA | 21R | A C D E | 2257 - 1.2 350 (350-1.2/1.6) | 35°26'53.000" E | 566 [m] | |
| | 3R | A B D E | 2057 - 0.8 200 (200-0.8/1.6) GS 3° | | | |
| | 3L | A C D E | 2257 - 1.2 350 (350-1.2/1.6) | | | |

| RWY | TORA | TORA from D | TORA from B | COURSE | PSN THR | ALS |
|-----|----------------------|---------------------|---------------------|--------|--------------------------|-----|
| 23 | 10,000 [ft] 3048 [m] | 8,000 [ft] 2438 [m] | | 235° | 37°00.611'N 035°26.368'E | ⊙ |
| 05 | 10,000 [ft] 3048 [m] | | 9,000 [ft] 2743 [m] | 055° | 36°59.043'N 035°24.760'E | ⊙ |

| | | | | | | |
|---------|-------------------|-------------------|---------|--------|------------|------------|
| ATIS | INCIRLIK GROUND | INCIRLIK TOWER | CONTROL | TACAN | ILS RWY 05 | ILS RWY 23 |
| 377.475 | 371.350 123.020 | 360.100 121.100 | 337.800 | DAN21x | 109.3MHz | 111.7MHz |

ATIS
377.475 (#8)

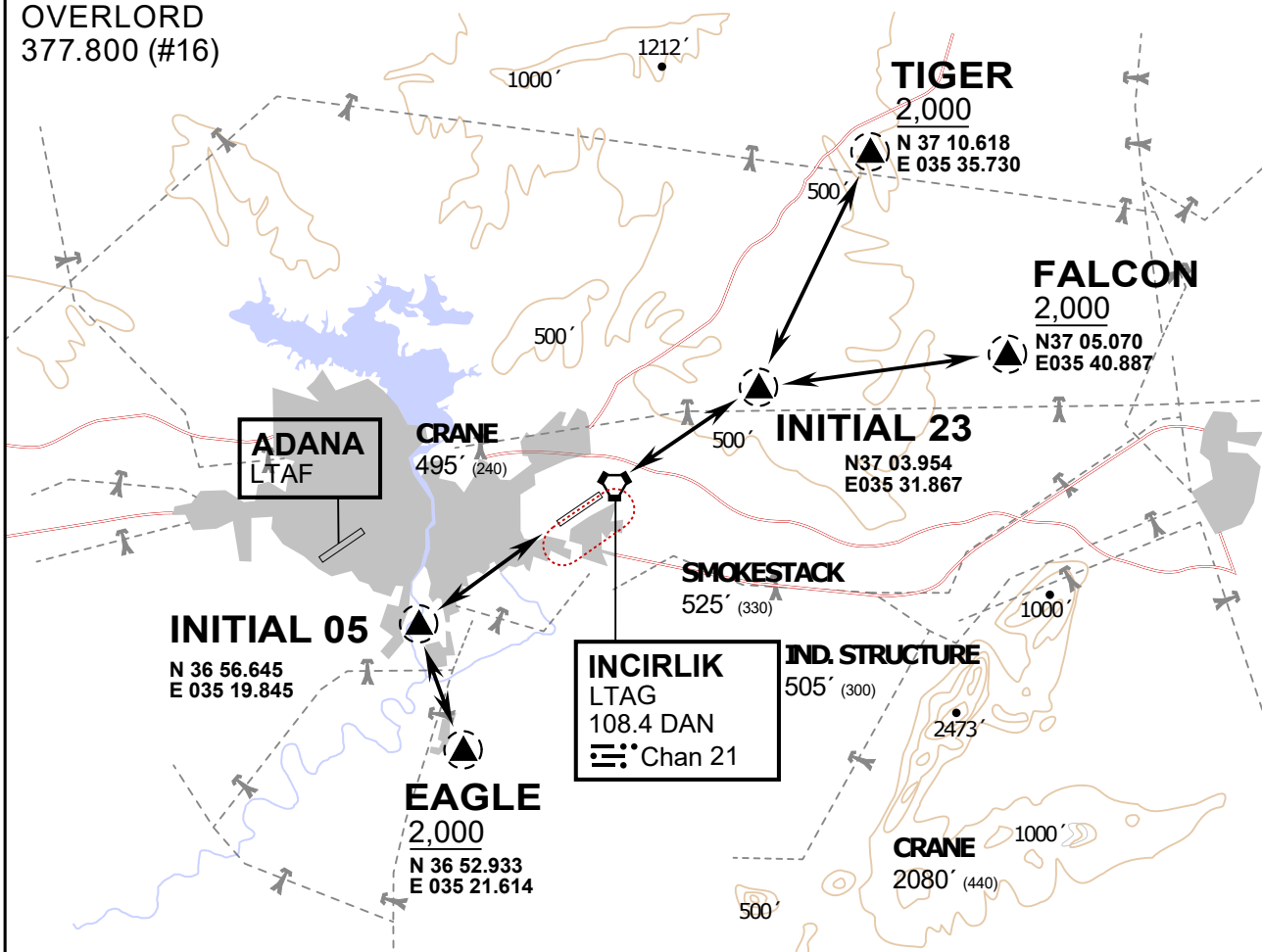
INCIRLIK GROUND
371.3500 (#7)

INCIRLIK TOWER
360.100 (#6)

OVERLORD
377.800 (#16)

NOT FOR CIVIL USE

CAUTION: If unable to comply with restrictions advise ATC prior to departure.



vJaBoG32 ETTR NAV CHART

ARR / DEP ROUTE DESCRIPTION

STRAIGHT-IN RWY 05 / 23

Pass entry EAGLE / TIGER / FALCON at 2000' and INITIAL at 1500'

OVERHEAD BREAK RWY 05 / 23

Pass entry EAGLE / TIGER / FALCON at 2500', pass INITIAL at 2000' break to the south at 2000' pattern altitude.

HELICOPTER ROUTES

Pass entry EAGLE / TIGER / FALCON at 1000' or below, pass INITIAL at 1000' break to the south at 1000' pattern altitude.

DEPARTURE ALL DIRECTIONS

pass DER below 1500ft

ATIS
377.475 (#8)

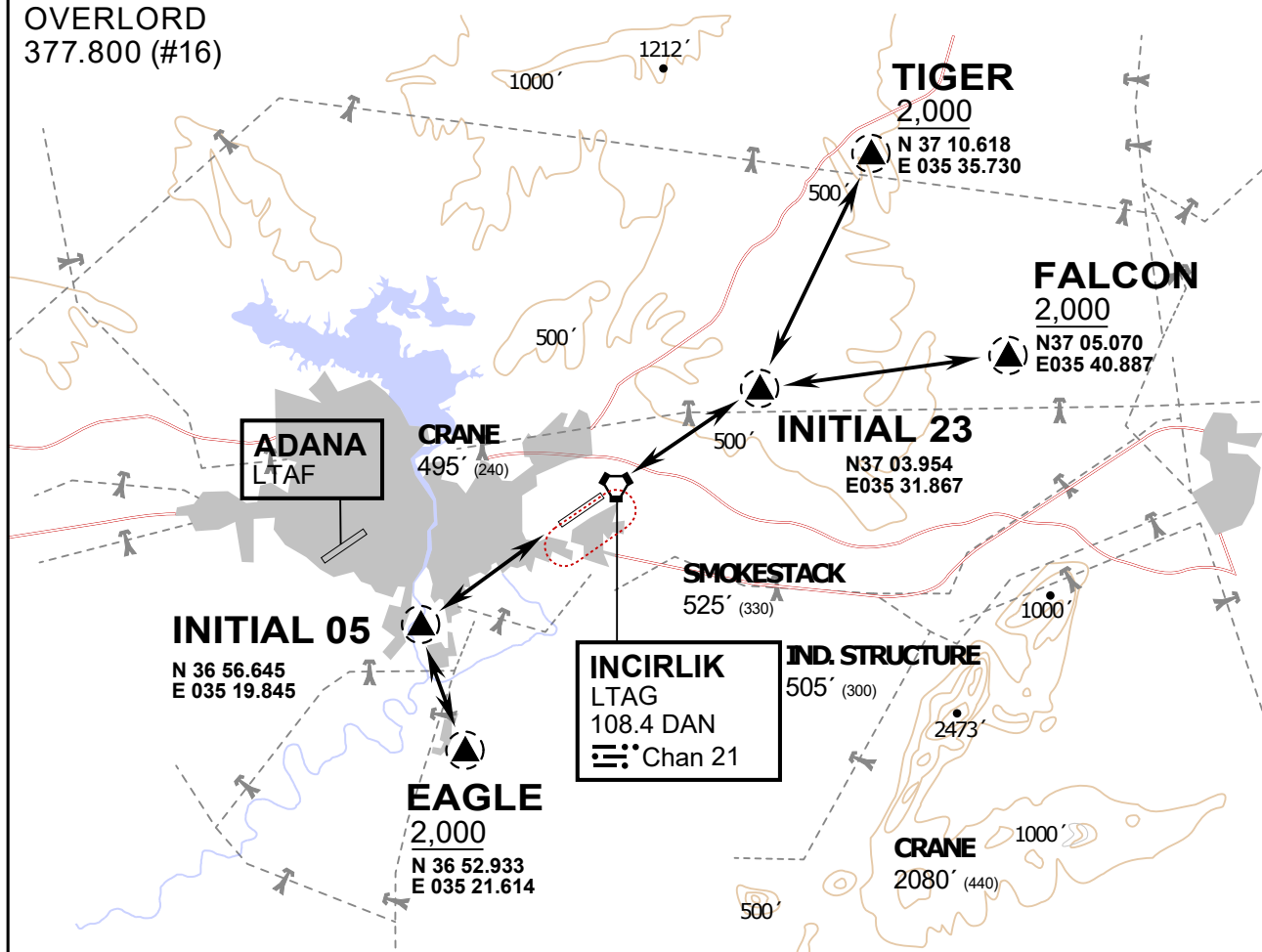
INCIRLIK GROUND
371.3500 (#7)

INCIRLIK TOWER
360.100 (#6)

OVERLORD
377.800 (#16)

NOT FOR CIVIL USE

CAUTION: If unable to comply
with restrictions advise ATC
prior to departure.



ARR / DEP ROUTE DESCRIPTION

STRAIGHT-IN RWY 05 / 23

Pass entry EAGLE / TIGER / FALCON at 2000' and INITIAL at 1500'

OVERHEAD BREAK RWY 05 / 23

Pass entry EAGLE / TIGER / FALCON at 2500',
pass INITIAL at 2000' break to the south at 2000' pattern altitude.

HELICOPTER ROUTES

Pass entry EAGLE / TIGER / FALCON at 1000' or below, pass INITIAL at 1000' break to the south at 1000' pattern altitude.

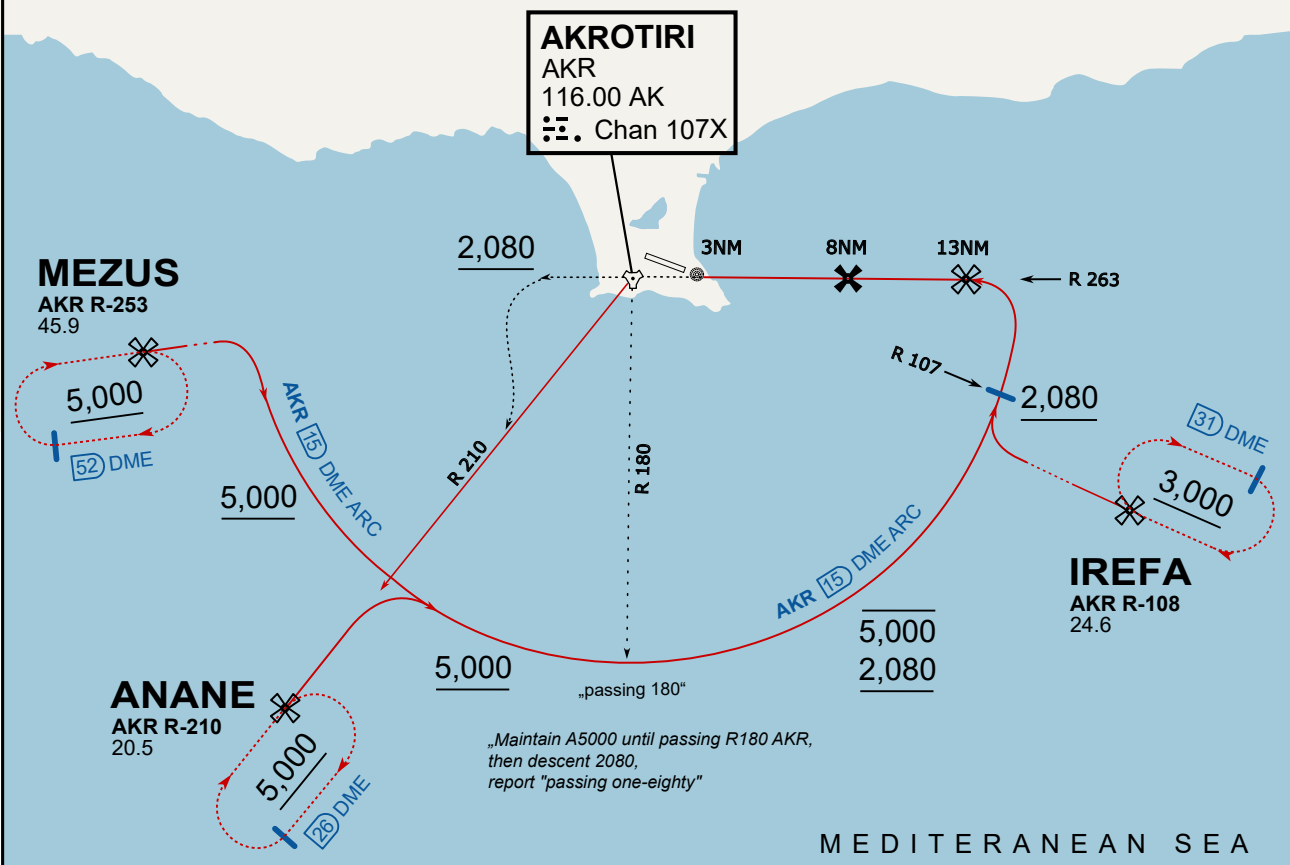
DEPARTURE ALL DIRECTIONS

pass DER below 1500ft

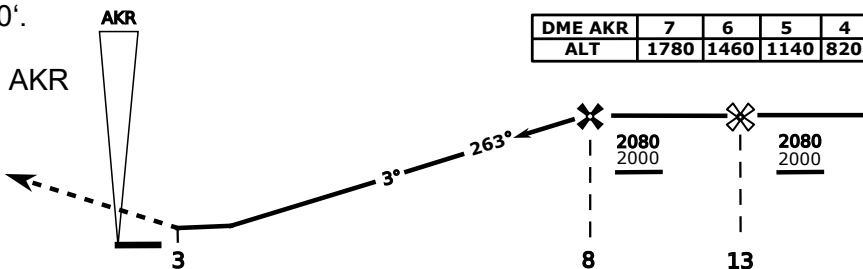
ATIS
 288.200
AKROTIRI GROUND
 122.100
AKROTIRI TOWER
 339.850
APP (OVERLORD)
 377.800

NOT FOR CIVIL USE

CAUTION: If unable to comply with restrictions advise ATC prior to departure.

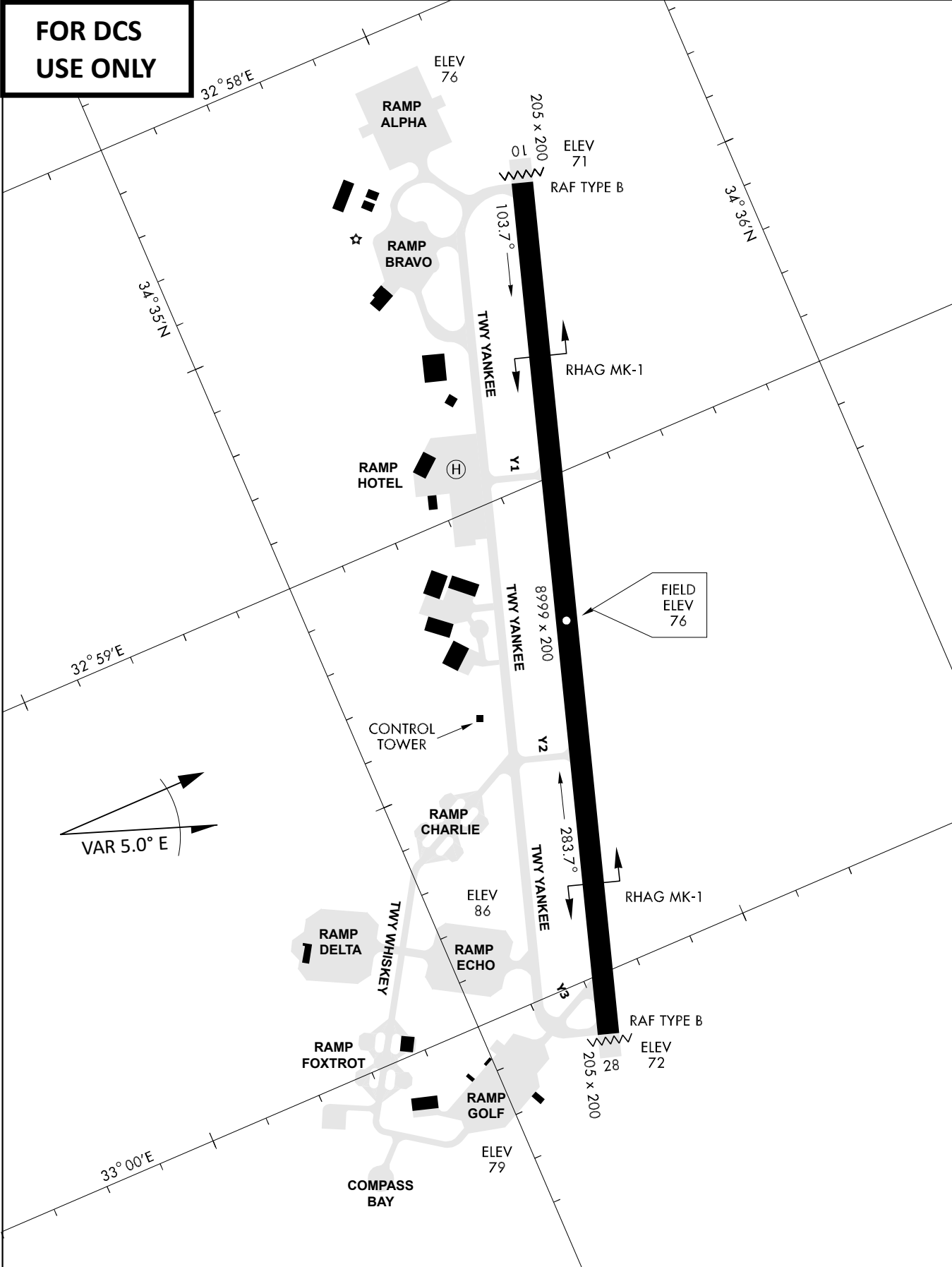


On Track 263° climb A 4.000'.
 passing 2.080' (2.000' AAL)
 turn left and intercept R-210 AKR
 to ANANE.
 Enter ANANE Holding.



| CAT | TAC | CIRCLE | GS (kts) | 80 | 120 | 150 | 180 | 210 |
|-----|--------------------|--------------------|----------------------|--|------|------|------|------|
| A | 500(430) | 680 (610) 2000m | FAF - MAPt (4.1NM) | 3:06 | 2:03 | 1:38 | 1:22 | 1:10 |
| B | 1300m | | RoD (fpm) | 420 | 640 | 800 | 950 | 1110 |
| C | 780 (710) 2600m | N/A | 780 (710) 3300m | - CIRCLING PROHIBITED N of Rwy - final track is offset 20° right of RCL and Intcp 1.1NM before THR - when established on final contact tower - Timing not Auth to define MAPt | | | | |
| D | | | 780 (710) 3600m | | | | | |
| E | | | 1380 (1310) 5000m | | | | | |

**FOR DCS
 USE ONLY**



| ATIS | AKROTIRI GND | AKROTIRI TWR | OVERLORD CONTROL | TACAN | FIELD ELEVATION |
|------------|-----------------|------------------|------------------|----------|-----------------------|
| 288.20 MHz | 240.10 122.10 | 339.85 130.075 | 377.8 | AKR 107X | 75 [ft] 23 [m] |