

**MISSION DATA CARD**

OPORD		Callsign		Mission		Date/Time		
3751/2025		Raptor 3		Strike		141900MAR25		
Task	ATO 1050 STRIKE					Freq		
AO	Al Safira					130.7		
Departure				Recovery				
VFR				VFR				
#	Callsign		Pilot		IFF	TCN	LSR	NET
-1	Raptor 3-1		Woodman		1631	5Y	1691	
-2	Raptor 3-2		Beathovenz		1632	68Y	1692	

**LOADOUT**

A/A	2xA120C, 2xA9X				GUN	100% HEI-T	
A/G	4xG38				CHF	90	
POD	HTS, A184, TGP				FLR	30	
TKS	2xFT300				FUEL	100%	

**TOLD**

	Takeoff	Target	Joker	Bingo	Land
FUEL	11169		5600	4500	500

**AIRBASES**

	Name	TCN	ATIS	GND	TWR	RWY	Elev	ILS
Dep	Incirlik AFB	21X	377.47 5	371.35	360.1	5	190	
Arr	Incirlik AFB	21X	377.47 5	371.35	360.1	5	190	
Div	Akrotiri AFB	107X	288.2	240.1	339.85	28	62	109.7

**FLIGHTPLAN**

#	Name	Navaid/Coords/DME	ALT	TOT
1	Falcon	N37 05 04.196 E035 40 53.222	5000	
2	HOLD Initial	N36 58.231 E037 35.550	24000	
3	HOLD Turnpoint	N36 34.283 E037 29.026	24000	
4	Turnpoint	N36 57 45.495 E037 12 37.968	3008	
5	Compound Factory	N36 03.72 E037 20.45	1260	
6	Compound Barrels	N36 03.46 E037 20.20	1236	
7	SA-2	N36 04.23 E037 20.51	1673	
8	AAA	N36 02.73 E037 20.41	1236	
9	Eagle	N36 52 55.992 E035 21 36.927	5000	
10	Incirlik AB	N36 59 39 E035 24 45	190	

## NOTES

### 1. SEAD- und Strike-Status

Sprite-Call für SEAD: erfolgreich

RedBull SEAD: nicht erfolgreich

\*Pepsi für unseren Strike: erfolgreich

\*Mate: nicht erfolgreich

### 2. Manöver

Manöverbeschreibung:

WP2 Holding Entry; Left Hand Holding;

Inbound Heading 193°; 24 Miles Leg; Speed 300 IAS; 3G, 60°

Bank

### 3. Frequenz-/Kanalzuweisungen

Einheiten und Systeme:

Raptor-1: 130.5

Tiger-1: MIDS 1

Lion-2: MIDS 9

\*Raptor-3: 130.7

Overlord: 377.8

Wizard: 355.6

Texaco 1: 248.7 (11Y)

Bodenkontrolle und Tower:

Incirlik ATIS: 377.475

Ground: 371.350

Tower: 360.100 (21X, 111.70 Mhz)

**SUPPORT****Tanker**

Callsign	TCN	Freq	ALT	TAS
TEXACO 2	44Y	244.78	FL150	250
Pos	TEXACO2: (N3424 E03403)			

## OTHER FLIGHTS

Callsign	Mission	Airframe	Freq	TCN	Grpld	Laser
Nazgul 1	Strike	4x F-15E	131.65	1/64		156X
AO	Syria	Task	ATO 1030 - Southern Target			
Tiger 1	DEAD	4x F/A-18C	261.15	1/64	1	155X
AO	Al Safira 260B280	Task	ATO 1050 DEAD			
Joker* 1	Transport	4x CH-47F	133.75	1/64		170X
AO		Task				
Raptor 1	SEAD	4x F-16C	130.5	1/64		162X
AO	Al Safira	Task	ATO 1050 SEAD			
Knight* 6	Strike	4x F/A-18C	264.05	1/64		170X
AO	Aleppo	Task	ATO1010			
Rattler 5	Training	4x AH-64D	133.5	1/64		125X
AO	ATO 1020	Task	CAS			
Raptor 7	Training	4x F-16C	129.3	1/64		170X
AO	Mako 6	Task	ATO 1060			
Devil* 4	CAS	4x A-10C	132.55	1/64		164X
AO	Minakh AB	Task	ATO 1020 CAS			
Monster 1	CAS	4x A-10C	132.15	16/79	21	161X
AO	Minakh Airfield	Task	Air Assault Minakh Airfield			
Panther 3	Training	4x F/A-18C	261.35	1/64		157X
AO	ATO1010	Task	SEAD			

**RADIO CHANNELS**

#	Freq	Name
1		Flight/Squadron specific
2	288.2	Akrotiri ATIS
3	240.1	Akrotiri Ground
4	339.85	Aktrotiri Tower
5	335.05	Akrotiri Approach
6	360.1	Incirlik Tower
7	371.35	Incirlik Ground
8	377.475	Incirlik ATIS
9		No Preset
10	127.3	Paphos ATIS
11	353.8	Paphos Tower
12	304.0	CVN-73 George Washington
13	302.0	LHA-1 Tarawa
14	259.0	CV-59 Forrestal
15		No Preset
16	377.8	Overlord
17	265.0	KC-135 Texaco-1 medium/slow
18	319.8	KC-135 Arco-1
19	360.8	KC-135MPRS Arco-2
20	256.0	S-3B Recovery Tanker

**RAMROD**

0	1	2	3	4	5	6	7	8	9
H	A	R	M	O	N	I	Z	E	D

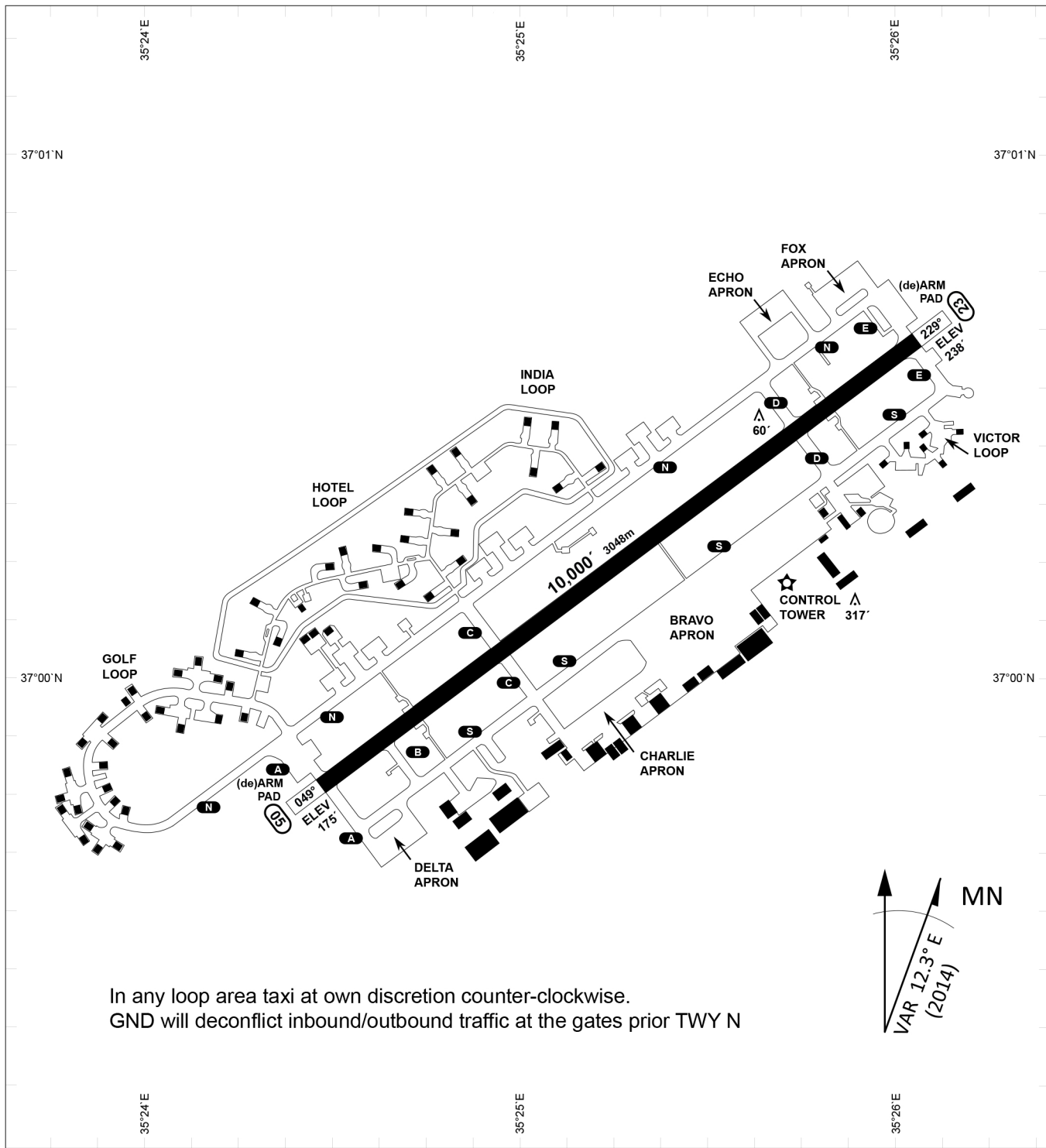
**KTC 1400 C**

	0	1	2	3	4	5	6	7	8	9
A	TBDY	AVR	XPJ	GQ	UE	MWO	HN	CS	LF	KI
B	ASJQ	FKB	RIU	GW	HO	EVX	LM	NT	CP	YD
C	THXB	YUK	PLS	MG	DW	QAR	EV	IF	CO	JN
D	AOBG	RSW	KUH	LJ	DC	IQN	PM	XT	VY	FE
E	PEBF	JVX	KQL	CN	TW	OGY	AH	UR	SI	DM
F	YPXL	MNK	FWA	QS	IE	DTB	HU	VR	JG	CO
G	MLJR	KCQ	EUT	YB	PI	HXW	GA	FS	DV	NO
H	IHQU	JYT	BVC	RP	GE	MDF	LO	SX	NW	AK
I	NKBH	IDE	YTS	XU	WV	RJF	MG	LP	OQ	CA
J	OPQK	IHN	RJB	MU	WD	CEA	LY	VS	GT	XF
K	UOEY	GFX	PRH	QK	SI	BDJ	CN	VW	LT	AM
L	KBRG	WFS	UXL	VO	EC	PDM	YA	HQ	NI	TJ
M	GLHO	MKU	SCW	VP	ED	QRB	FY	TJ	IN	AX
N	KYEH	BUC	MTO	XG	VS	WPL	IN	FD	QR	JA
O	UNPA	KQR	TJW	HD	YG	FLM	OI	VC	SB	EX
P	YCSO	LGW	QBE	FT	MX	DUK	JA	HV	IP	RN
Q	WDCS	QVY	UPT	BI	XK	GOR	HJ	NE	FA	ML
R	CIYJ	DGV	BUQ	NH	OE	APF	SL	RM	TX	WK
S	KPGF	OIU	TQY	DL	XH	CWA	EJ	BM	RS	NV
T	IHPL	WAT	XMG	QC	JB	EOK	UF	RN	SV	YD
U	IRHL	USD	KCY	OG	FW	XME	VN	QA	TB	PJ
V	JISG	AWX	OBU	TH	LK	MYF	RQ	EV	DP	CN
W	TEXD	RNF	KGQ	JU	MV	IAC	LP	WO	SH	BY
X	TOGA	SWM	HIL	YQ	FN	EUC	PB	JX	RD	KV
Y	JXYT	IEB	NRH	GP	WL	UMO	SQ	FV	KA	DC

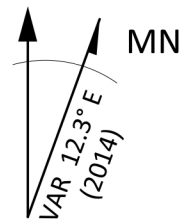
**NAVAIDS**

<b>Id</b>	<b>Name</b>	<b>Channel</b>	<b>Position</b>	<b>Elevation</b>
DAN	Incirlik	21	N37 00.950 E035 26.883	243
AKR	Akrotiri	107	N34 34.765 E032 57.769	147
PHA	Paphos	79	N34 42.997 E032 28.963	35
RMD	Ramat David	84	N32 39.892 E035 11.265	136
OS66	Kuweires Military Aviation Institute	36	N36 11.362 E037 34.226	1200





In any loop area taxi at own discretion counter-clockwise.  
 GND will deconflict inbound/outbound traffic at the gates prior TWY N



PAR	RWY	CAT	MINIMA	ARP	ELEV	Scale 1:35'500 0 300 600 900 1200 1500 [m] 0 1000 2000 3000 4000 5000 [ft]
SRA	21L 3R 21R 3L	A B D E A B D E A C D E A C D E	2057 - 0.8 200 (200-0.8/1.6) GS 3° 2057 - 0.8 200 (200-0.8/1.6) GS 3° 2257 - 1.2 350 (350-1.2/1.6) 2257 - 1.2 350 (350-1.2/1.6)	37°0'56.000" N 35°26'53.000" E	1857 [ft] 566 [m]	

RWY	TORA	TORA from D	TORA from B	COURSE	PSN THR	ALS
23	10,000 [ft] 3048 [m]	8,000 [ft] 2438 [m]		235°	37°00.611'N 035°26.368'E	⊙
05	10,000 [ft] 3048 [m]		9,000 [ft] 2743 [m]	055°	36°59.043'N 035°24.760'E	⊙

ATIS	INCIRLIK GROUND	INCIRLIK TOWER	CONTROL	TACAN	ILS RWY 05	ILS RWY 23
377.475	371.350   123.020	360.100   121.100	337.800	DAN21x	109.3MHz	111.7MHz

ATIS  
377.475 (#8)

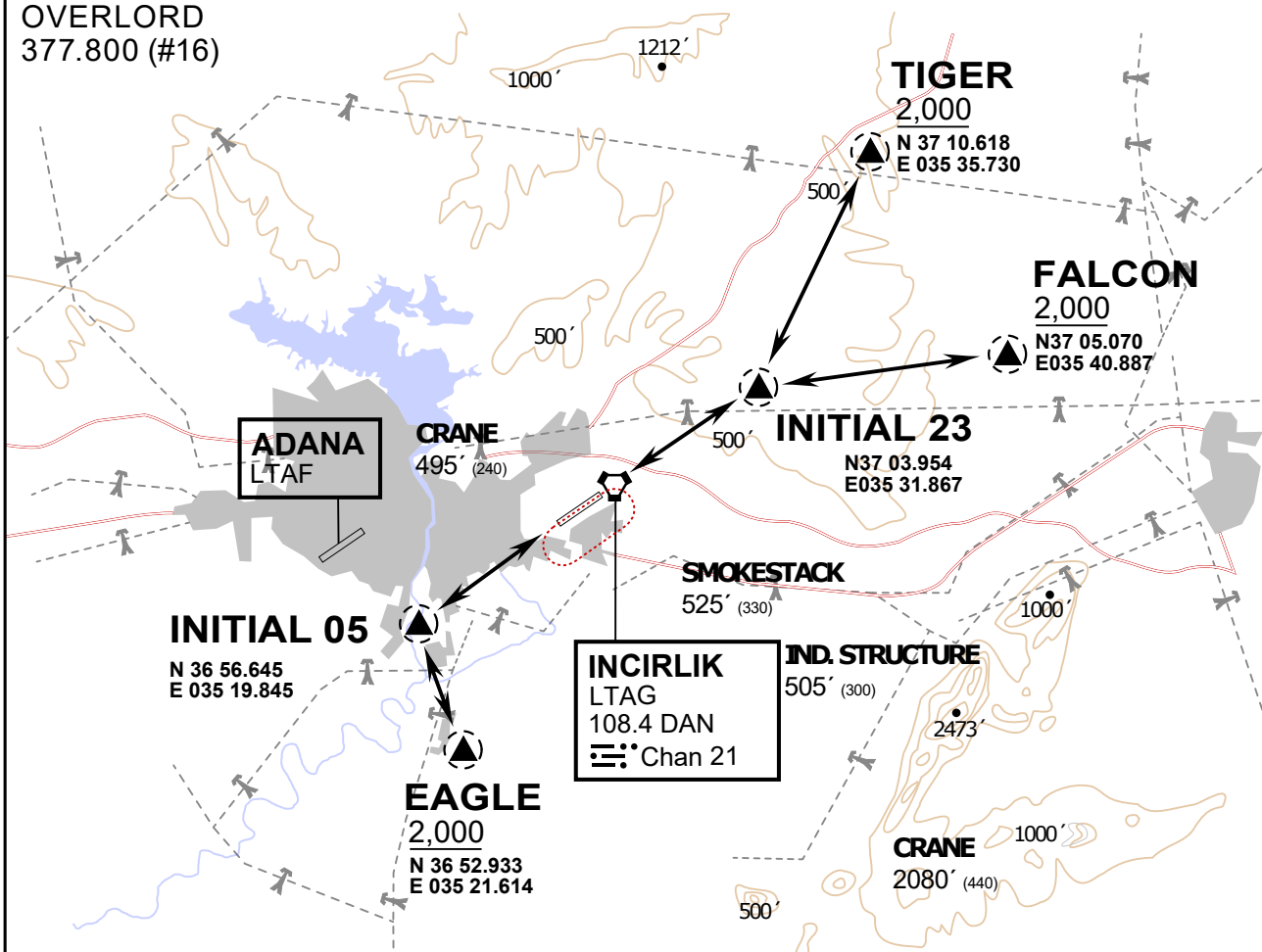
INCIRLIK GROUND  
371.3500 (#7)

INCIRLIK TOWER  
360.100 (#6)

OVERLORD  
377.800 (#16)

NOT FOR CIVIL USE

CAUTION: If unable to comply with restrictions advise ATC prior to departure.



vJaBoG32 ETTR NAV CHART

**ARR / DEP ROUTE DESCRIPTION**

**STRAIGHT-IN RWY 05 / 23**

Pass entry EAGLE / TIGER / FALCON at 2000' and INITIAL at 1500'

**OVERHEAD BREAK RWY 05 / 23**

Pass entry EAGLE / TIGER / FALCON at 2500', pass INITIAL at 2000' break to the south at 2000' pattern altitude.

**HELICOPTER ROUTES**

Pass entry EAGLE / TIGER / FALCON at 1000' or below, pass INITIAL at 1000' break to the south at 1000' pattern altitude.

**DEPARTURE ALL DIRECTIONS**

pass DER below 1500ft

ATIS  
377.475 (#8)

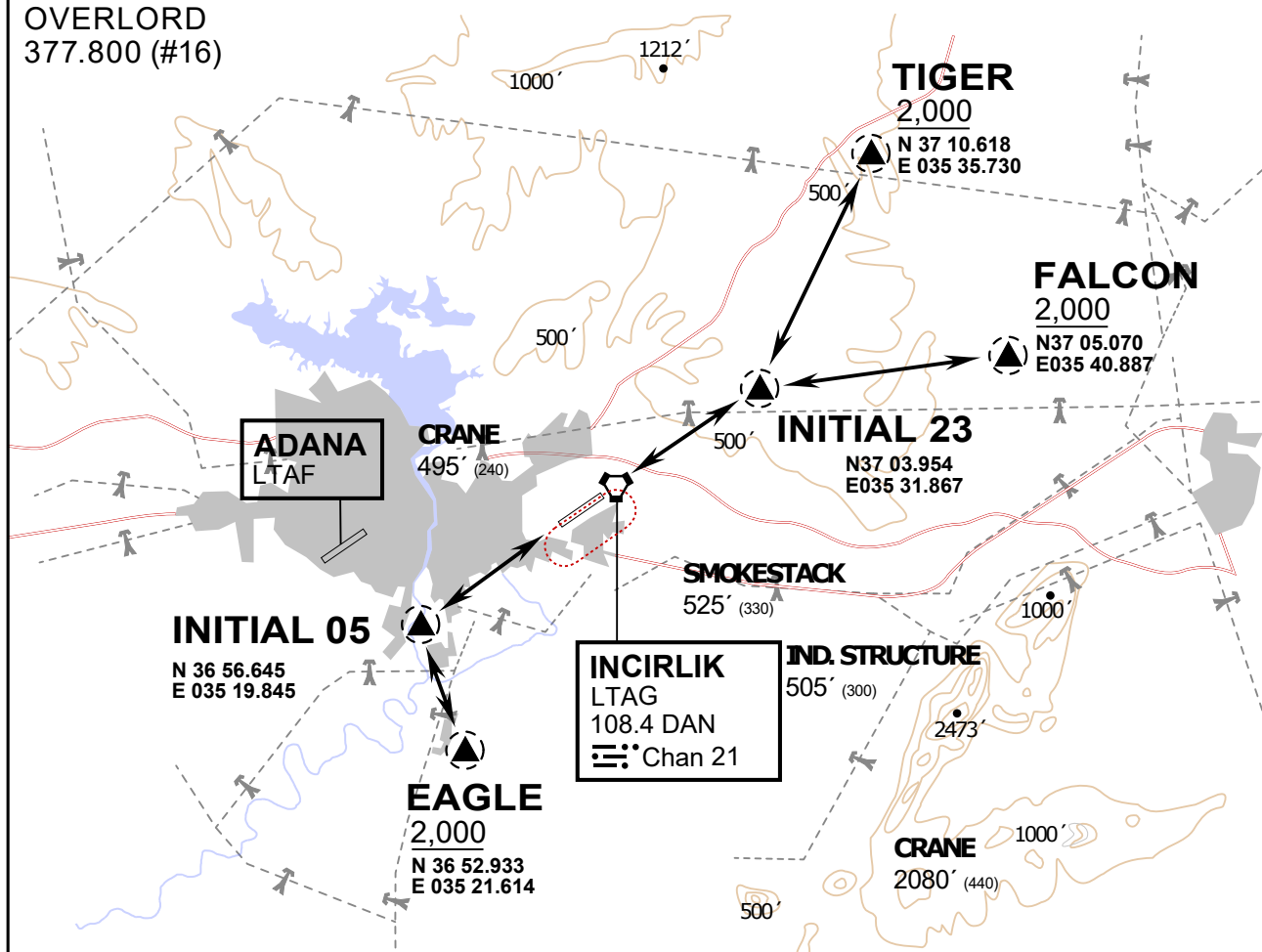
INCIRLIK GROUND  
371.3500 (#7)

INCIRLIK TOWER  
360.100 (#6)

OVERLORD  
377.800 (#16)

NOT FOR CIVIL USE

CAUTION: If unable to comply  
with restrictions advise ATC  
prior to departure.



vJaBoG32 ETRR NAV CHART



### ARR / DEP ROUTE DESCRIPTION

#### STRAIGHT-IN RWY 05 / 23

Pass entry EAGLE / TIGER / FALCON at 2000' and INITIAL at 1500'

#### OVERHEAD BREAK RWY 05 / 23

Pass entry EAGLE / TIGER / FALCON at 2500',  
pass INITIAL at 2000' break to the south at 2000' pattern altitude.

#### HELICOPTER ROUTES

Pass entry EAGLE / TIGER / FALCON at 1000' or below, pass INITIAL at 1000' break to the south at 1000' pattern altitude.

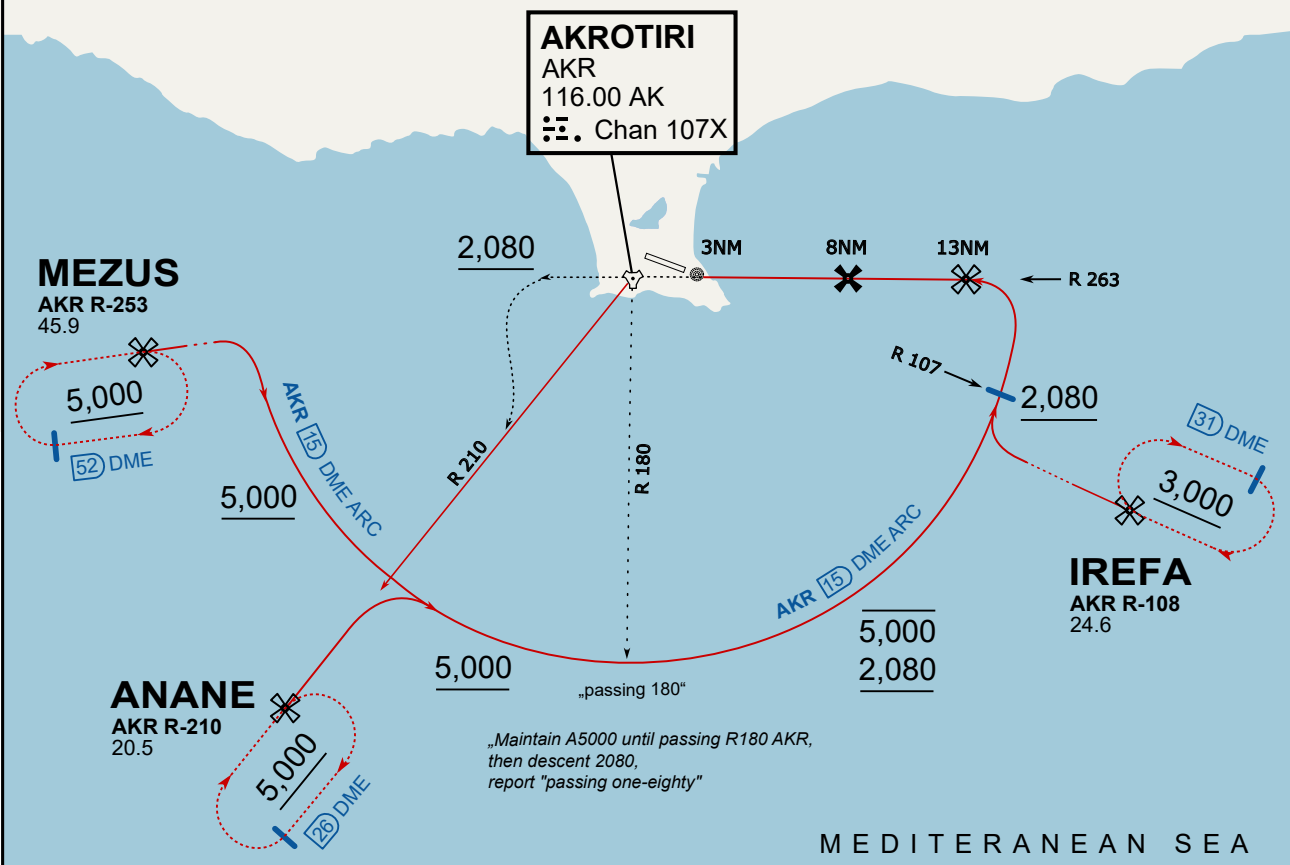
#### DEPARTURE ALL DIRECTIONS

pass DER below 1500ft

**ATIS**  
 288.200  
**AKROTIRI GROUND**  
 122.100  
**AKROTIRI TOWER**  
 339.850  
**APP (OVERLORD)**  
 377.800

**NOT FOR CIVIL USE**

CAUTION: If unable to comply with restrictions advise ATC prior to departure.

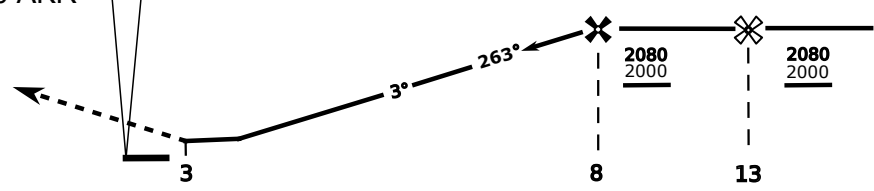


vJaBoG32 ETRR NAV CHART

On Track 263° climb A 4.000'.  
 passing 2.080' (2.000' AAL)  
 turn left and intercept R-210 AKR  
 to ANANE.  
 Enter ANANE Holding.

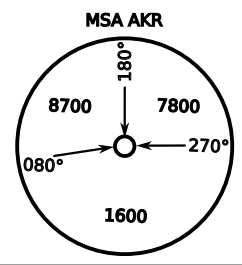


DME AKR	7	6	5	4
ALT	1780	1460	1140	820

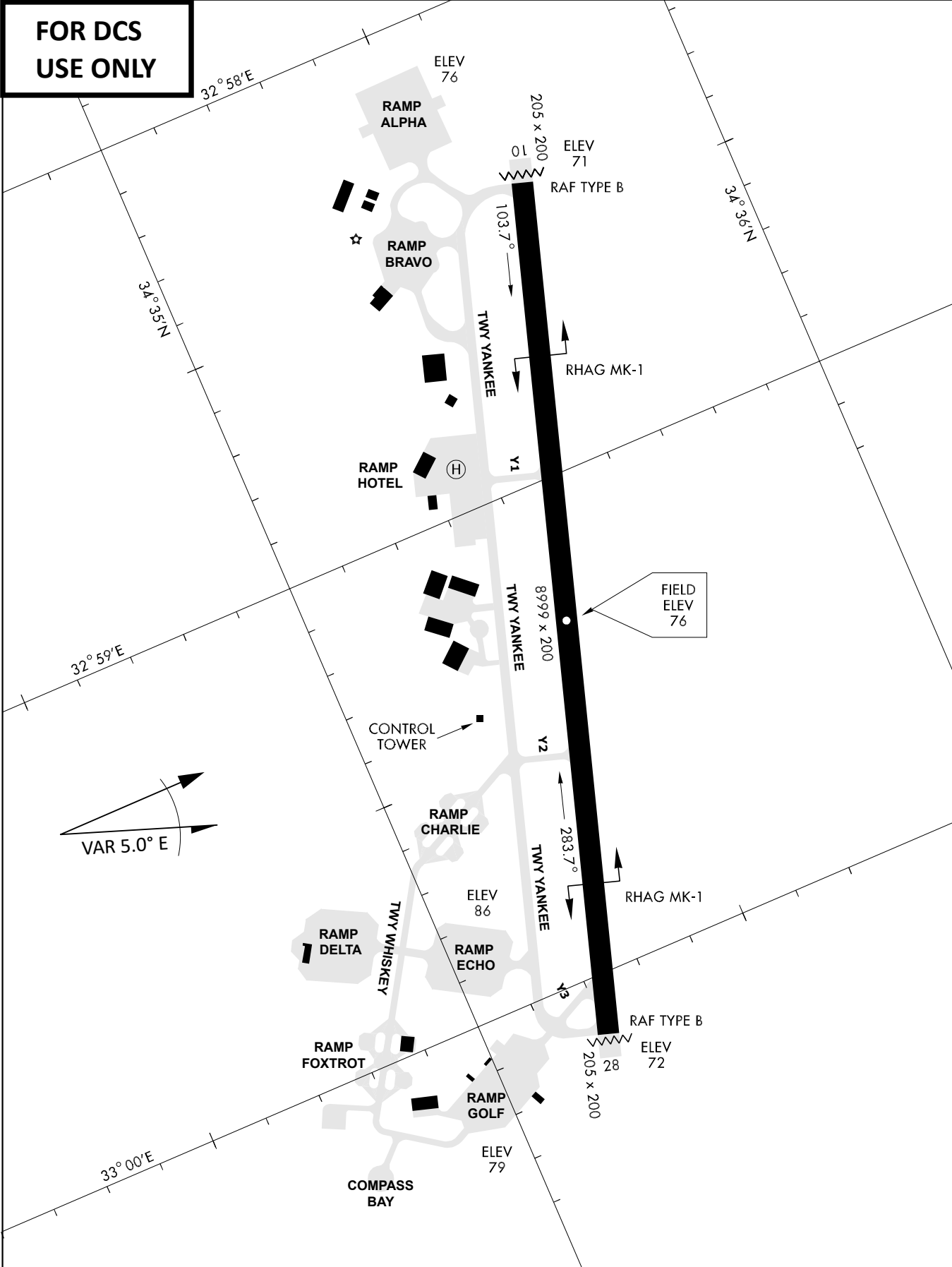


THR Elev 74ft DME AKR

CAT	TAC	CIRCLE	GS (kts)	80	120	150	180	210
A	500(430)	N/A	680 (610) 2000m	FAF - MAPt (4.1NM)				
B	1300m			3:06	2:03	1:38	1:22	1:10
C	780 (710) 2600m		780 (710) 3300m	RoD (fpm)				
D			780 (710) 3600m	420	640	800	950	1110
E			1380 (1310) 5000m	1380 (1310) 5000m	- CIRCLING PROHIBITED N of Rwy			
			- final track is offset 20° right of RCL and Intcp 1.1NM before THR					
			- when established on final contact tower					
			- Timing not Auth to define MAPt					



**FOR DCS  
 USE ONLY**



ATIS	AKROTIRI GND	AKROTIRI TWR	OVERLORD CONTROL	TACAN	FIELD ELEVATION
288.20 MHz	240.10   122.10	339.85   130.075	377.8	AKR 107X	<b>75 [ft] 23 [m]</b>