

**MISSION DATA CARD**

OPORD		Callsign		Mission		Date/Time	
3747/2025		Panther 7		Training		132007MAR25	
Task	SAM Tests SA-11 / SA-10					Freq	
AO	ESR01 SAM Range					261.35	
Departure				Recovery			
CAT				Tacan RWY 21			
#	Callsign	Pilot		IFF	TCN	LSR	NET
-1	Panther 7-1	Prinz		1271	1Y	1571	
-2	Panther 7-2	Kosmoss		1272	64Y	1572	
-3	Panther 7-3	Hawk		1273	64X	1573	
-4	Panther 7-4	Ghost		1274	1X	1574	

**LOADOUT**

A/A	2xA9X, A120C				GUN	100% HEI-T
A/G	4xA88C				CHF	90
POD	TGP				FLR	30
TKS	FPU-8A				FUEL	100%

**TOLD**

	Takeoff	Target	Joker	Bingo	Land
FUEL	13047			3500	

**AIRBASES**

	Name	TCN	ATIS	GND	TWR	RWY	Elev	ILS
Dep	CVN-71 USS Theodore Roosevelt	71X		ICLS 7	304.0			
Arr	Rovaniemi	14X	282.8	282.5	250.55	21	643	111.7
Div	Rovaniemi	14X	282.8	282.5	250.55	21	643	111.7

**FLIGHTPLAN**

#	Name	Navaid/Coords/DME	ALT	TOT
1	LURAP	N69 05.560 E018 15.890	28000	
2	T.ESR01.SA10	N68 27.930 E020 52.903	0	
3	T.ESR01.SA11	N68 32.359 E021 07.058	0	
4	AR.SHELL1	N67 26.792 E024 34.717	28000	
5	IMARI	N66 28.406 E025 31.291	0	
6	INSAR	N66 38.850 E025 59.333	0	

**COMMS**

Radio	Usage
1	304.0 MTHR / 348.7 HMDLL / ROV 282.8 (ATIS) 250.55 (TWR) 282.5 (GND) /
2	SHL1 360.8
3	MIDS-A 23
4	MIDS-B 44

**SUPPORT****Tanker**

Callsign	TCN	Freq	ALT	TAS
SHELL 1	41Y	360.8		
Pos				

**OTHER FLIGHTS**

Callsign	Mission	Airframe	Freq	TCN	Grpld	Laser
Raptor 1	Training	4x F-16C	134.0	1/64		171X
AO	East Rovaniemi	Task	Tac Formations			
Cobra 3	Training	4x AH-64D	264.05	1/64		170X
AO	R92D	Task				

## RADIO CHANNELS

#	Freq	Name
1		Flight/Squadron specific
2	282.8	Rovaniemi ATIS
3	282.5	Rovaniemi Ground
4	250.55	Rovaniemi Tower
5	320.7	Bodo ATIS
6	250.75	Bodo Tower
7	235.45	Kallax ATIS
8	250.3	Kallax Tower
9	265.0	Texaco-1   KC-135   Medium / Slow   71Y
10	319.8	Arco-1   KC-135   High / Fast   22Y
11	360.8	Shell-1   KC-135 MPRS   High / Fast   41Y
12	304.0	CVN-71 Rough Rider (RRR)   71X
13	303.0	LHA-1 Tarawa (TWA)   79X
14	247.8	S-3B Mauler-1 (MAU)  64Y
15	347.8	Loki (E-2D)
16	348.7	Heimdall (E-3A)
17	242.17	ESR02 - CAS Range Operator
18	34.7	ESR02 - JTAC Odin
19	270.5	Blue
20	270.75	Red

**RAMROD**

0	1	2	3	4	5	6	7	8	9
W	A	I	N	S	C	O	T	E	D

**KTC 1400 C**

	0	1	2	3	4	5	6	7	8	9
A	PUKB	SAF	LYM	IQ	EH	NVR	OT	XW	CG	DJ
B	NAIR	TUV	CXL	ME	WF	KOY	DJ	BH	SP	GQ
C	ASYV	UNK	LJP	OH	IG	BWQ	DT	CE	FR	MX
D	EJHG	TVW	RFI	DL	KM	NAU	CP	BO	YS	QX
E	EDJQ	CKN	SBM	UR	AH	OFL	IV	PY	XG	TW
F	AQRU	XHL	PFK	DN	OM	IYW	GS	BC	EJ	VT
G	BJML	HTW	AUO	CX	GP	YKE	FD	IQ	RV	SN
H	DFXB	IYH	VGP	TS	CJ	LQN	UM	WK	OA	RE
I	NIAV	TXF	YOJ	HE	UB	RDL	QW	MP	SC	GK
J	WHMD	NLE	KRF	UC	OJ	SVX	IY	BT	QG	PA
K	NHDX	AMJ	TFV	SQ	YL	EIB	UO	RG	CK	WP
L	MHDC	JLV	YUX	QG	BK	NPF	ST	WO	EI	RA
M	RTWH	YSC	IKA	MQ	OB	GVU	JF	LN	EX	PD
N	YLVE	NOG	DXH	SK	IT	WAM	PR	QJ	FB	CU
O	MJRE	BYQ	FCA	GX	IO	LSU	KT	PD	HN	WV
P	UFAP	EIK	HLO	WY	CS	DBG	JX	QR	NV	TM
Q	ELCU	PWH	QFB	KO	VG	DTS	AX	IR	JY	MN
R	XUPG	DRQ	YCI	AO	TB	LVN	EF	JW	HS	MK
S	ASYE	TKR	LIB	VD	XJ	WMG	UQ	FP	CH	ON
T	GYFM	XRA	QTC	HS	KI	WDP	LB	OE	JV	UN
U	LKIA	FHV	PTS	DR	MY	NCJ	UQ	EO	XB	WG
V	NTFS	OIH	GCE	MU	PK	BXV	QW	RY	JD	LA
W	BULQ	WSM	PGD	YA	CF	XJN	VK	IO	TE	HR
X	EMRF	VXW	BYD	NG	LH	QSC	JU	OA	TI	PK
Y	EQIK	RMX	GTD	NP	UA	HOC	LB	VJ	YS	FW

**NAVAIDS**

Id	Name	Channel	Position	Elevation
BOO	Bodo	45	N67 15.838 E014 20.046	43
BNK	Banak	47	N70 03.937 E024 58.181	17
OYA	Andoya	28	N69 17.175 E016 08.658	19



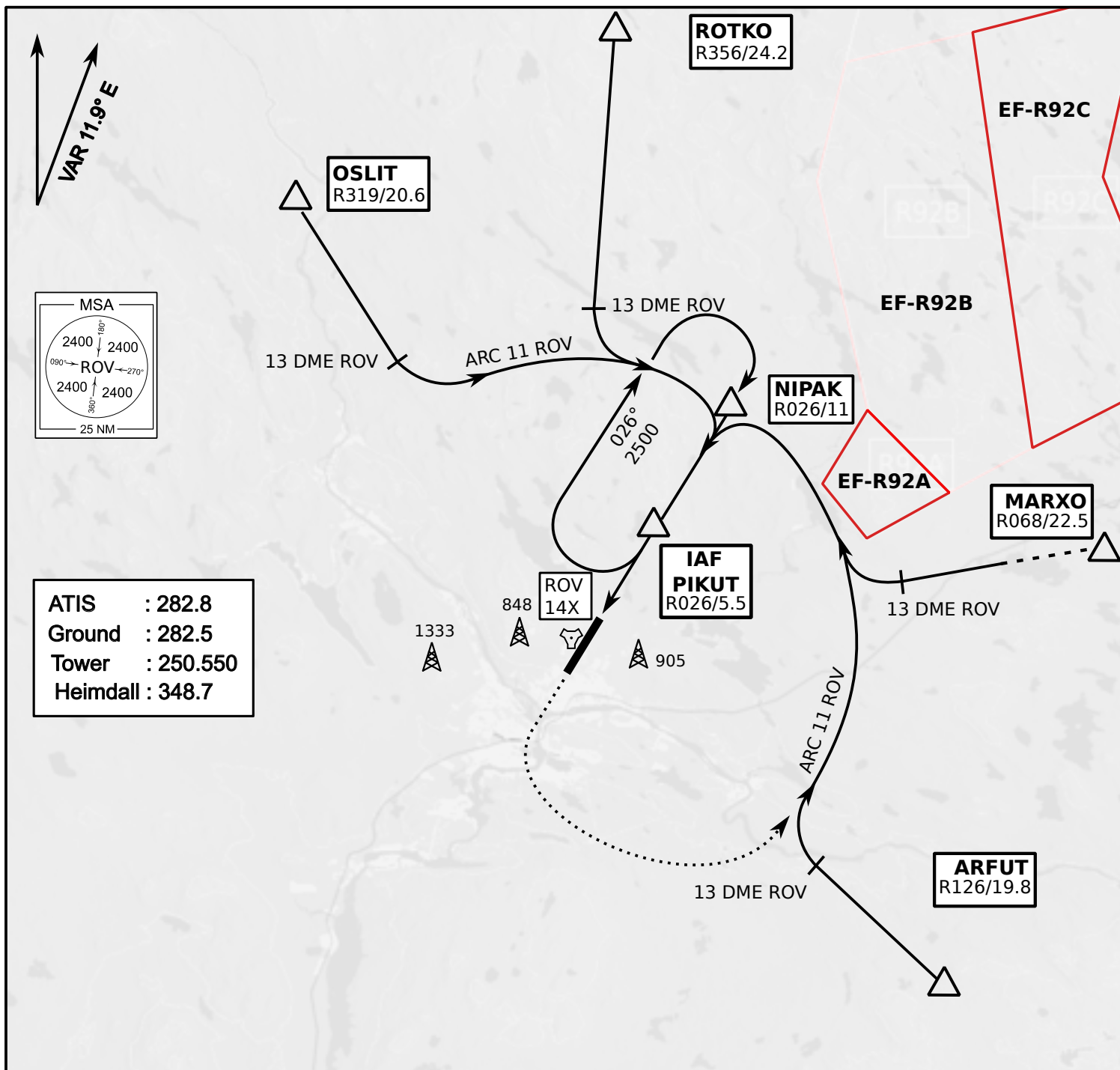




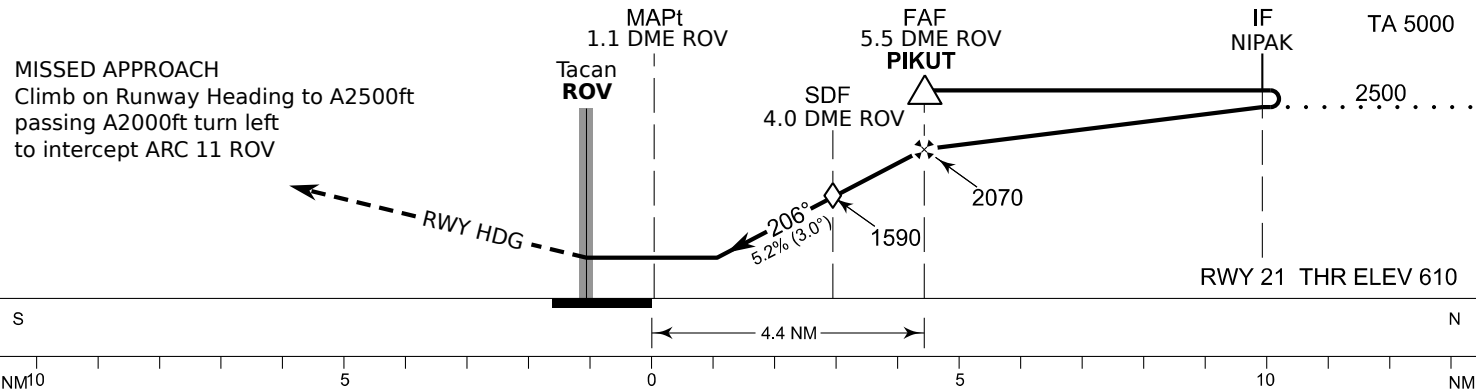
INSTRUMENT  
APPROACH CHART

ELEV 643ft  
HEIGHTS RELATED TO  
THR RWY21 ELEV 610ft

Tacan RWY 21  
ROVANIEMI AERODROME  
ROVANIEMI, FINLAND



**ATIS : 282.8**  
**Ground : 282.5**  
**Tower : 250.550**  
**Heimdall : 348.7**



OCA (H)	A	B	C	D
Tacan	1010 (400)			
Tacan WO SDF	1590 (980)			
Circling	1120 (470)	1150 (510)	1300 (660)	1340 (690)

Final Approach DIST	3.0 DME	4.0 DME	5.0 DME			
Altitude (Height)	1280 (670)	1590 (980)	1910 (1300)			
	kt	90	100	120	140	160
FAF - MAPt 4.4 NM	min:sec	2:56	2:38	2:12	1:53	1:39
Rate of descent	ft/min	480	530	640	740	850

Timing not authorized for defining the MAPt

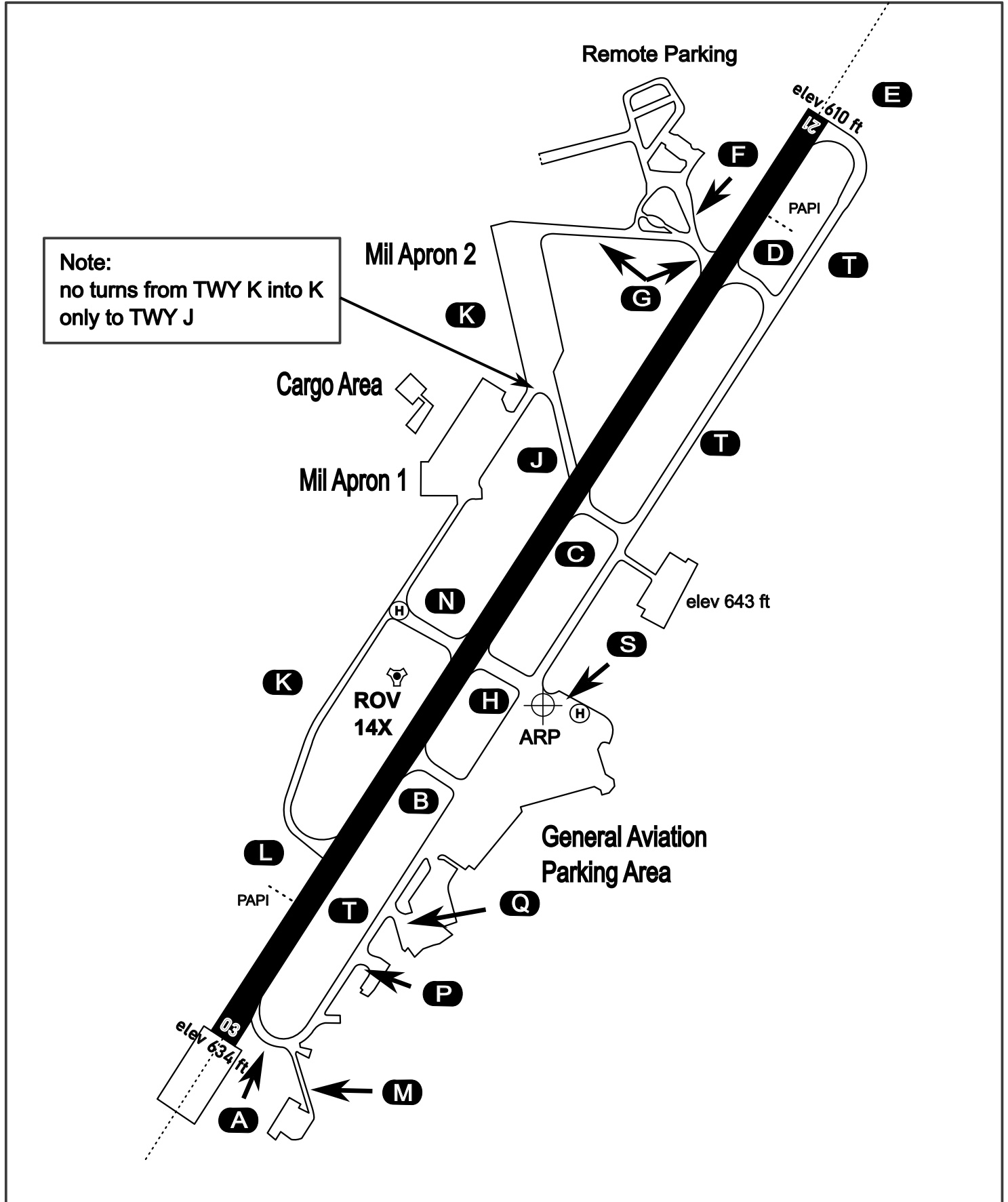
# AERODROME CHART

Rovaniemi Aerodrome

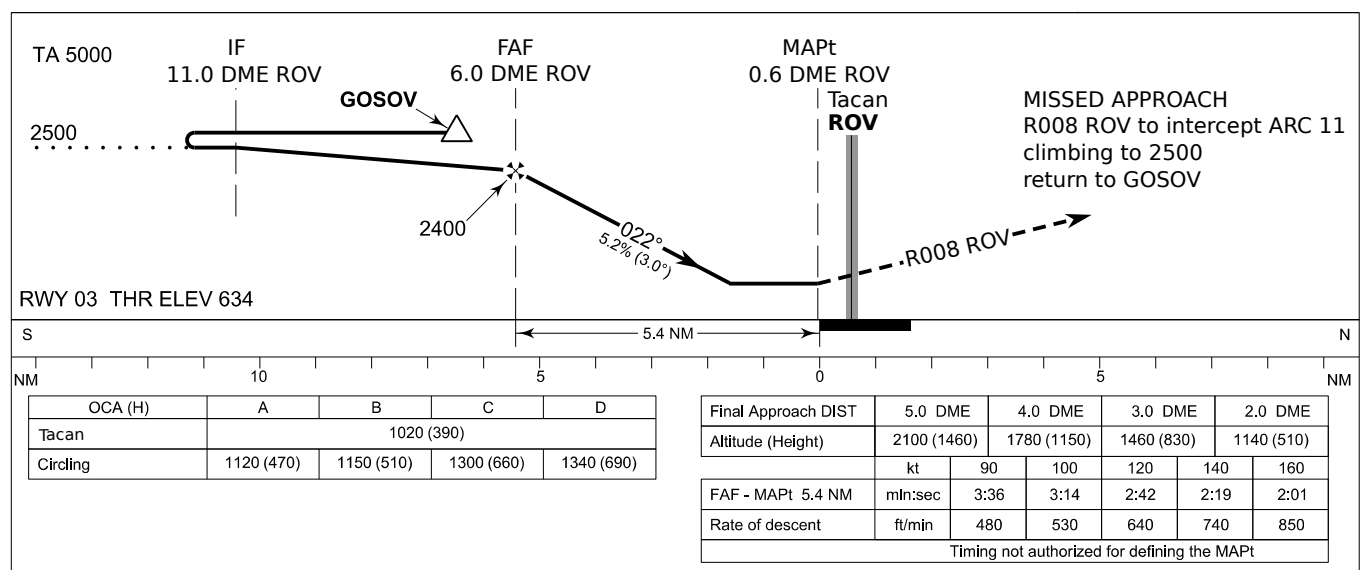
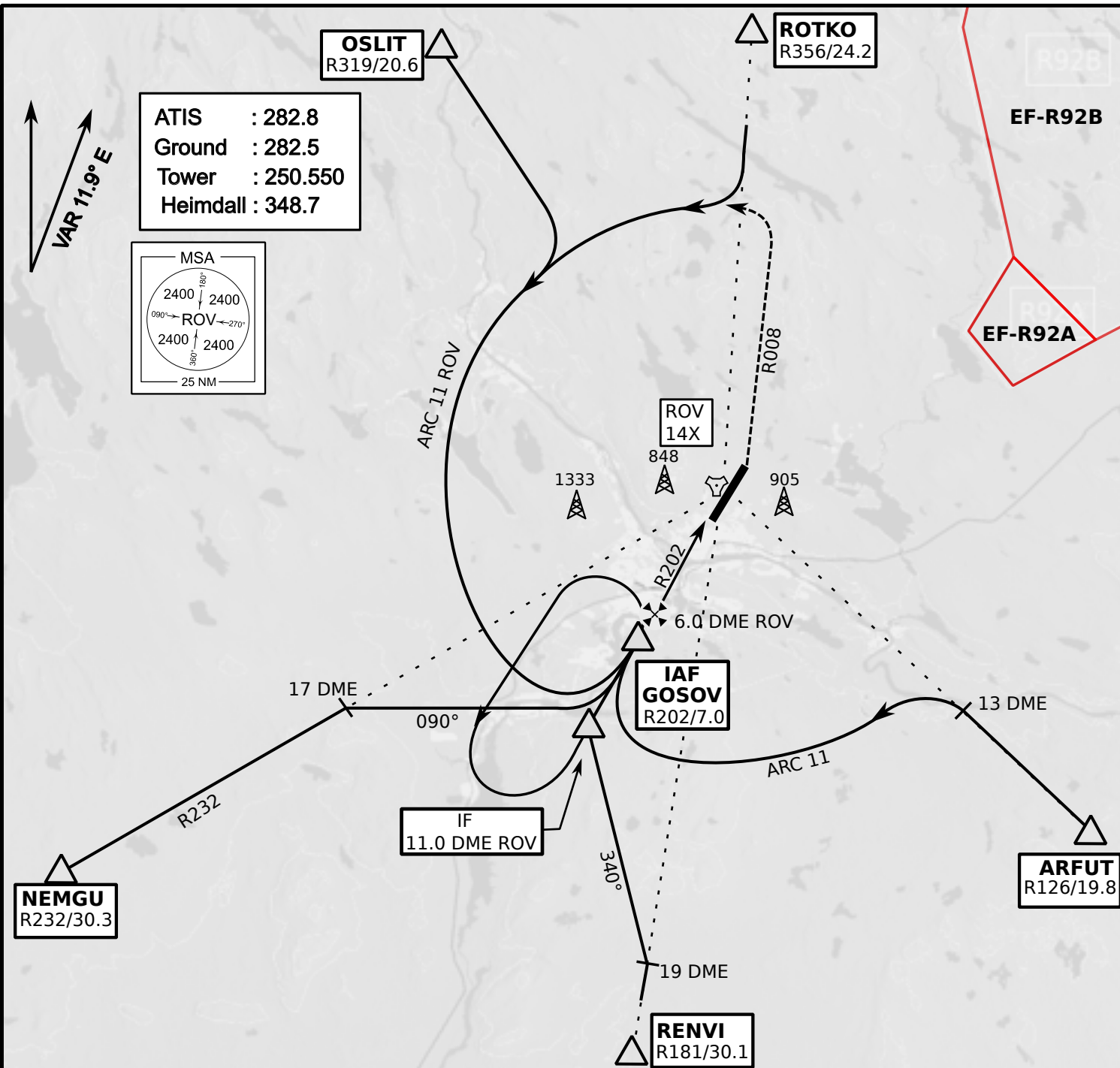
ARP N66° 33' 42" E025° 49' 51"

elev 643 ft

## ROVANIEMI, FINLAND



ATIS	Ground	Tower	Radar
282.800	282.500	250.550	348.700



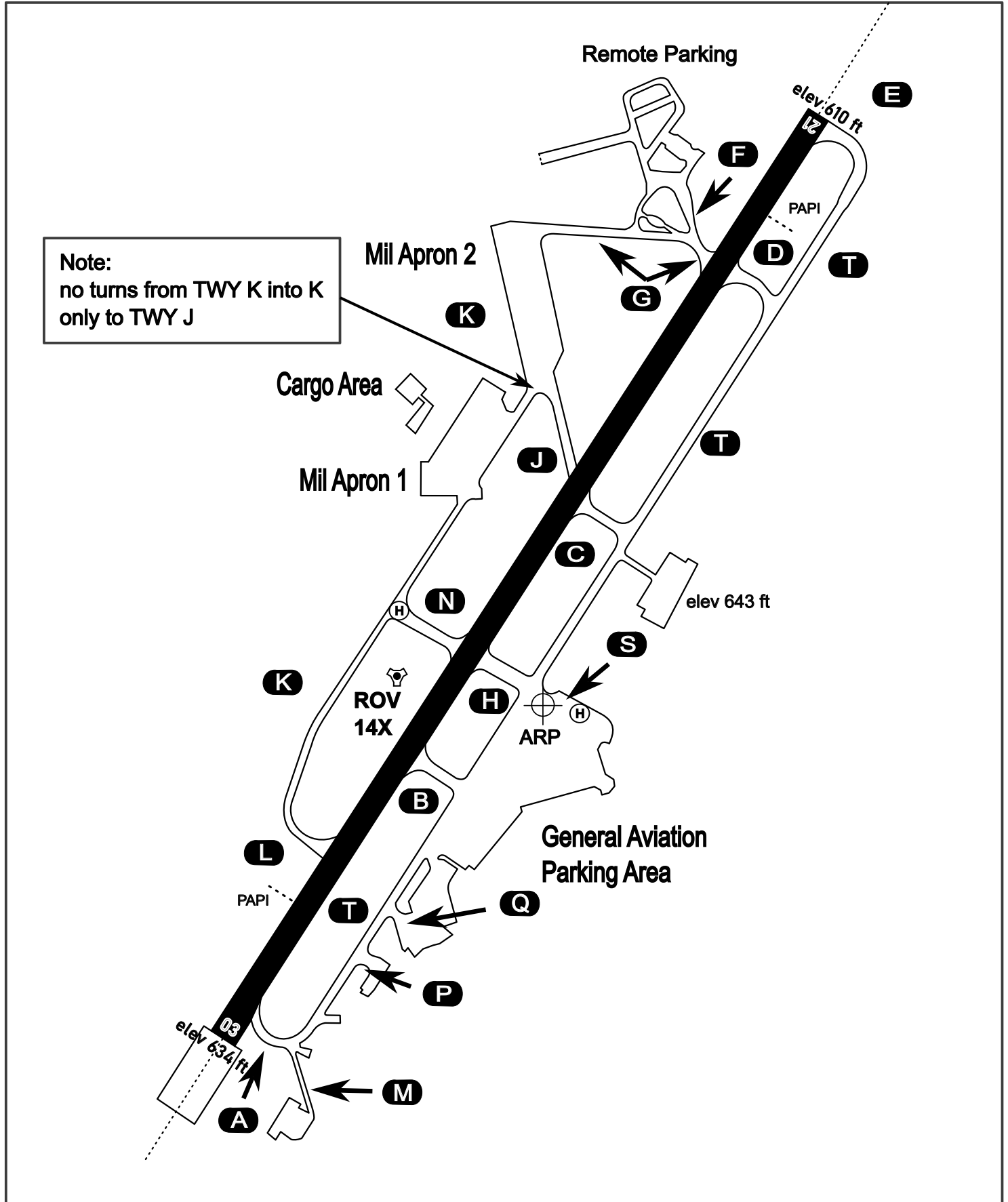
# AERODROME CHART

Rovaniemi Aerodrome

ARP N66° 33' 42" E025° 49' 51"

elev 643 ft

## ROVANIEMI, FINLAND



ATIS	Ground	Tower	Radar
282.800	282.500	250.550	348.700