

**MISSION DATA CARD**

OPORD		Callsign		Mission		Date/Time		
3746/2025		Raptor 1		Training		121545MAR25		
Task						Freq		
AO						134.0		
Departure				Recovery				
SID RWY 21				ILS RWY 21				
#	Callsign		Pilot		IFF	TCN	LSR	NET
-1	Raptor 1-1		Meteor		1611	1Y	1621	

**LOADOUT**

A/A	2xA120C, 2xA9X				GUN	100% HEI-T	
A/G	2xA88C				CHF	60	
POD	HTS, TGP				FLR	60	
TKS	2xFT300				FUEL	100%	

**TOLD**

	Takeoff	Target	Joker	Bingo	Land
FUEL	11169	0			

**AIRBASES**

	Name	TCN	ATIS	GND	TWR	RWY	Elev	ILS
Dep	Rovaniemi	14X	282.8	282.5	250.55	21	643	111.7
Arr	Rovaniemi	14X	282.8	282.5	250.55	21	643	111.7
Div	Kemi Tornio	106X			250.3	36	62	110.9

**FLIGHTPLAN**

#	Name	Navaid/Coords/DME	ALT	TOT
1	IBSAN	N66 42.500 E025 01.083	10000	
2	NAFFI	N67 04.630 E023 11.660	20000	
3	SEPJA	N67 27.300 E021 12.080	20000	
4	T.ESR01.SA6	N68 22.154 E020 19.399		
5	OSLIT	N66 51.750 E025 24.383	10000	
6	NIPAK	N66 42.350 E026 06.083	3000	

## RADIO CHANNELS

#	Freq	Name
1		Flight/Squadron specific
2	282.8	Rovaniemi ATIS
3	282.5	Rovaniemi Ground
4	250.55	Rovaniemi Tower
5	320.7	Bodo ATIS
6	250.75	Bodo Tower
7	235.45	Kallax ATIS
8	250.3	Kallax Tower
9	265.0	Texaco-1   KC-135   Medium / Slow   71Y
10	319.8	Arco-1   KC-135   High / Fast   22Y
11	360.8	Shell-1   KC-135 MPRS   High / Fast   41Y
12	304.0	CVN-71 Rough Rider (RRR)   71X
13	303.0	LHA-1 Tarawa (TWA)   79X
14	247.8	S-3B Mauler-1 (MAU)  64Y
15	347.8	Loki (E-2D)
16	348.7	Heimdall (E-3A)
17	242.17	ESR02 - CAS Range Operator
18	34.7	ESR02 - JTAC Odin
19	270.5	Blue
20	270.75	Red

**RAMROD**

0	1	2	3	4	5	6	7	8	9
F	R	U	I	T	C	A	K	E	S

**KTC 1400 C**

	0	1	2	3	4	5	6	7	8	9
A	LETY	SVP	WDR	NM	AX	FBH	GU	IO	CJ	QK
B	XLOC	BQA	VKH	SR	IW	JMF	EP	DU	NY	TG
C	SPYO	GRB	QCL	UE	VF	JKH	NT	AI	XW	MD
D	VNYI	JLH	ODF	XW	EP	TQG	KA	BC	MR	US
E	HREW	XSY	TNF	IJ	BA	MLC	UG	KV	QO	PD
F	SABE	ILX	TOG	UR	QD	PFH	WY	MN	VC	KJ
G	VKTF	SEB	JMO	YW	CD	LIU	NP	QA	XG	HR
H	JESM	OLQ	BPD	TN	XV	HRG	YC	AK	IW	FU
I	YGXN	CTE	QWO	DK	MR	IVU	LA	JH	PF	BS
J	NRBW	IYF	SHX	AT	JO	GML	VC	EP	DQ	UK
K	ITLH	FPK	EDX	GA	VY	RWO	SJ	BC	MQ	UN
L	IPJV	BYT	UHC	KA	MF	GSQ	NR	WX	DL	OE
M	BUQH	YPE	GVX	KC	AJ	NMO	RW	ST	DI	LF
N	DASX	COQ	MPJ	VF	RE	YLU	HI	GB	TK	WN
O	AEXQ	LYK	IOM	JD	FS	NGW	UH	BT	PV	RC
P	LABM	DKR	EOF	HN	CJ	XYW	VT	PQ	IG	SU
Q	WOJB	CID	URM	PS	XN	EHY	TA	LV	GK	FQ
R	RUVS	OBX	DYJ	EW	QG	PLN	KF	AH	IT	CM
S	TYEC	WGO	KXH	ID	RF	AJP	QU	LM	BS	VN
T	EBJH	WUC	IDA	QT	KL	VYX	RP	ON	MS	FG
U	LJGA	QFO	NYT	HX	MC	BRE	VS	PU	IK	DW
V	HSGE	VAR	LCX	JM	DK	QBF	IW	NO	TY	UP
W	QHXA	RFO	CEY	IP	WM	LBK	UN	DG	SJ	TV
X	AIDH	TVL	SBF	YU	QN	OMK	EW	JC	RX	GP
Y	TYFG	KBE	XCJ	OU	RL	IMP	DS	WH	NQ	AV

**NAVAIDS**

Id	Name	Channel	Position	Elevation
BOO	Bodo	45	N67 15.838 E014 20.046	43
BNK	Banak	47	N70 03.937 E024 58.181	17
OYA	Andoya	28	N69 17.175 E016 08.658	19

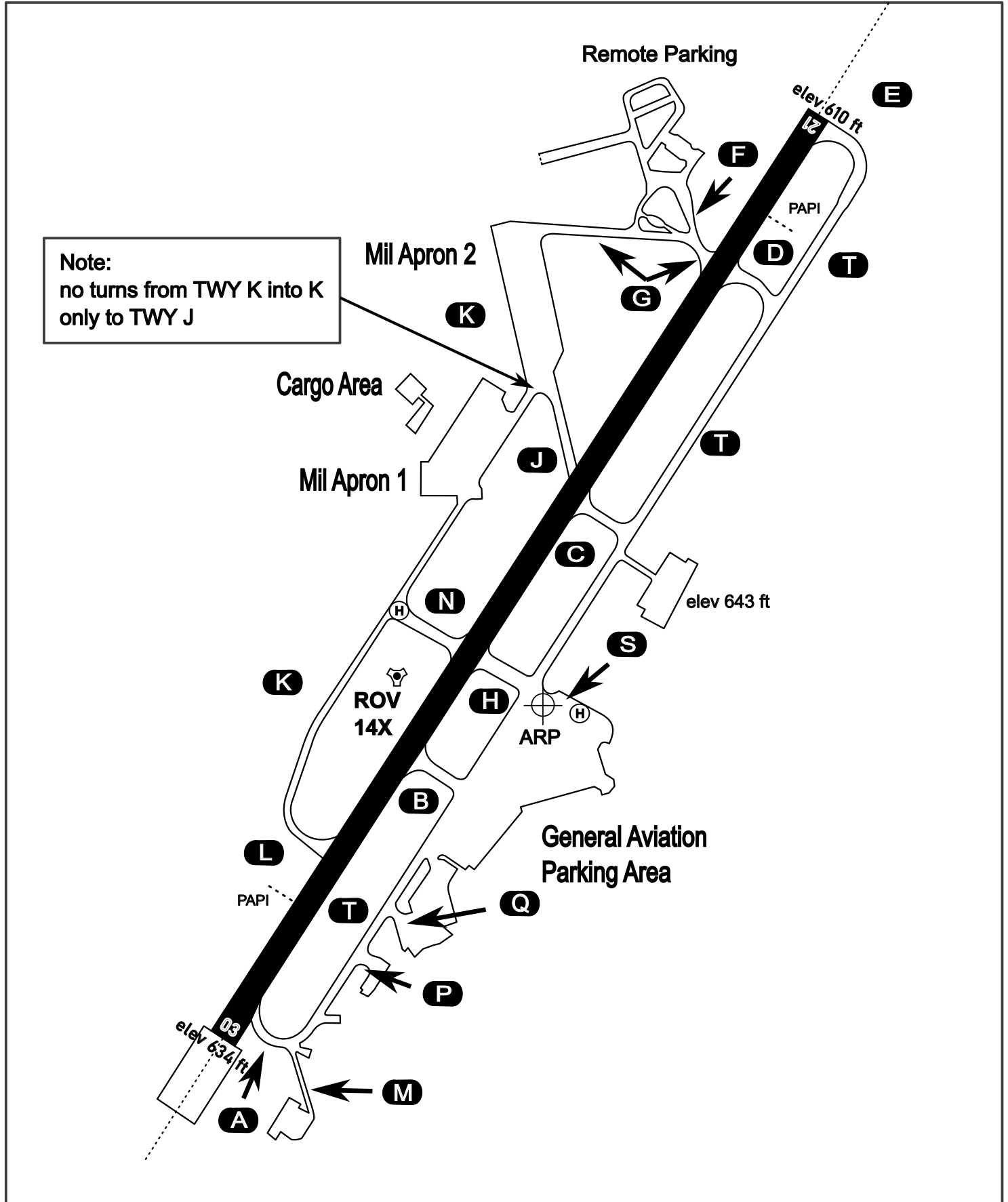
# AERODROME CHART

Rovaniemi Aerodrome

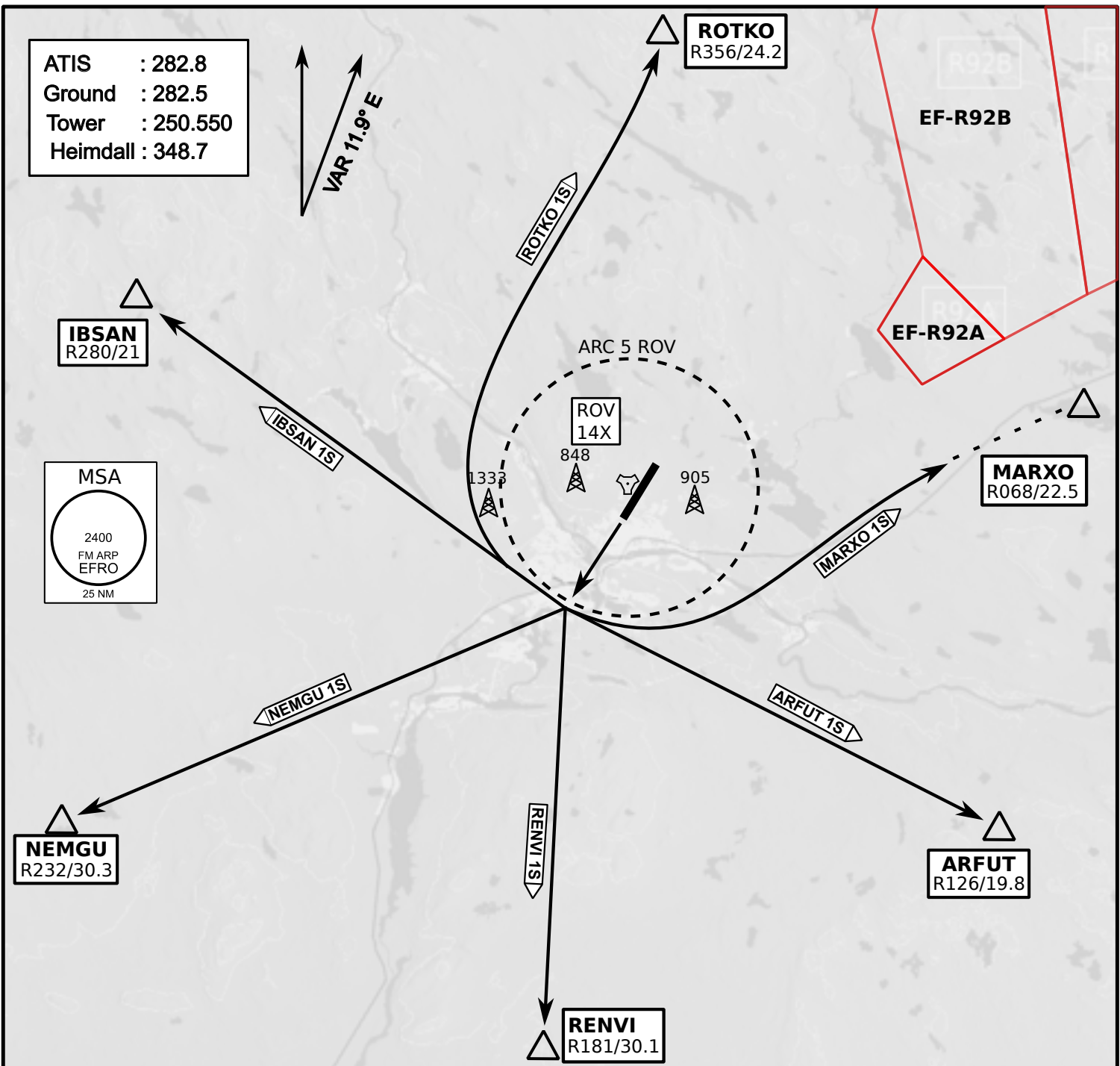
ARP N66° 33' 42" E025° 49' 51"

elev 643 ft

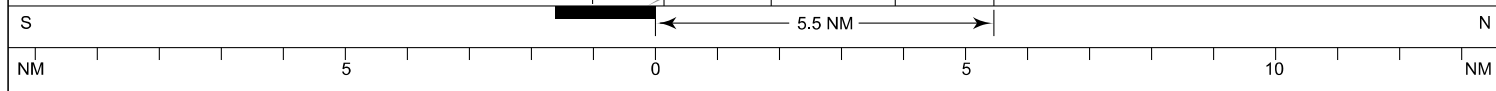
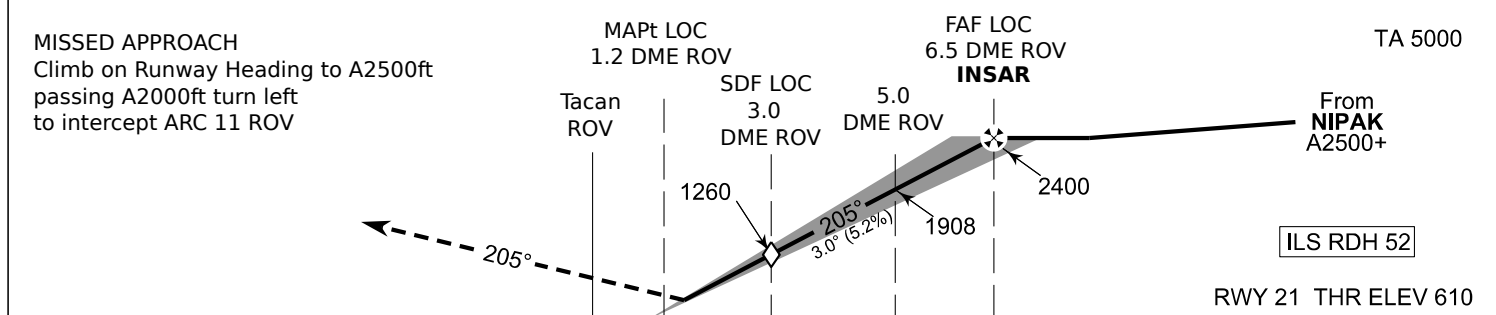
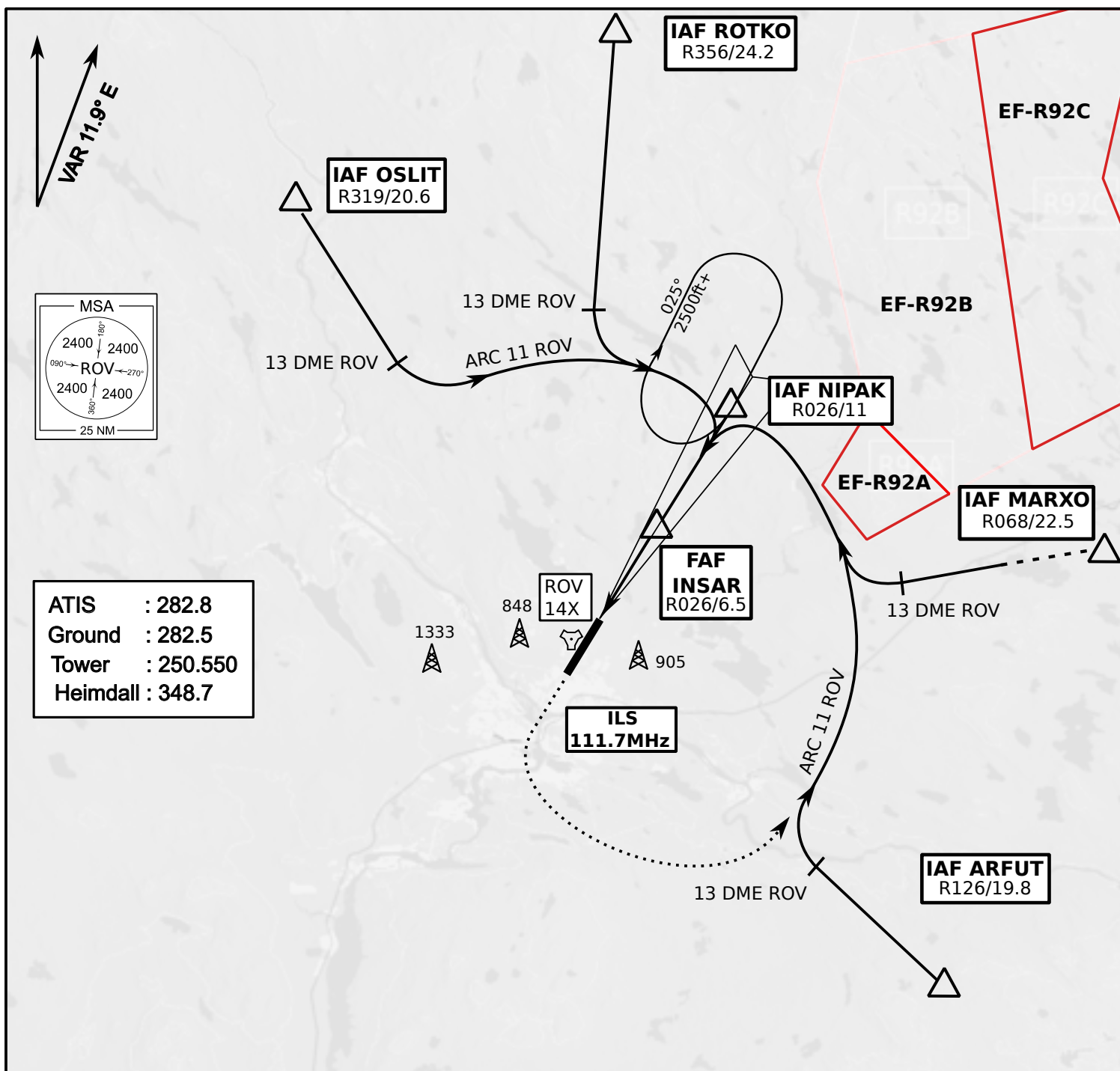
## ROVANIEMI, FINLAND



ATIS	Ground	Tower	Radar
282.800	282.500	250.550	348.700



- Climb on Rwy heading to min A2000ft
- when passing A2000ft OR 5 DME ROV (whichever is later) turn direct exit point
- Stay outside ARC 5 ROV
- AB usage only if necessary for flight safety



OCA (H)	A	B	C	D
ILS CAT I	773 (164)	784 (175)	795 (186)	809 (200)
LOC	930 (320)			
LOC WO SDF	1260 (650)			
Circling	1120 (470)	1150 (510)	1300 (660)	1340 (690)

	kt	90	100	120	140	160
FAF - MAPt 5.4 NM	min:sec	3:36	3:14	2:42	2:19	2:01
Rate of descent	ft/min	480	530	640	740	850

Timing not authorized for defining the MAPt



**NOT AVAILABLE**

**NOT AVAILABLE**