

**MISSION DATA CARD**

OPORD		Callsign		Mission		Date/Time		
3745/2025		Cobra 3		Training		132200MAR25		
Task						Freq		
AO	R92D					264.05		
Departure				Recovery				
VFR Helicopter				VFR Helicopter				
#	Callsign		Pilot		IFF	TCN	LSR	NET
-1	Cobra 3-1		Hudson/Laud		5031	1Y	1701	
-2	Cobra 3-2		Warblade/Mütze		5032	64Y	1702	
-3	Cobra 3-3		Remotex		5033	64X	1703	

**LOADOUT**

A/A					GUN	25% HEDP	
A/G	4xAGM114L, 8xAGM114K				CHF	30	
POD					FLR	60	
TKS					FUEL	100%	

**TOLD**

	Takeoff	Target	Joker	Bingo	Land
FUEL	2513				

**AIRBASES**

	Name	TCN	ATIS	GND	TWR	RWY	Elev	ILS
Dep	Rovaniemi	14X	282.8	282.5	250.55	21	643	111.7
Arr	Rovaniemi	14X	282.8	282.5	250.55	21	643	111.7

**FLIGHTPLAN**

#	Name	Navaid/Coords/DME	ALT	TOT
1	ROV - MA1	N66 34.044 E025 49.528		
2	VIKA	N66 37.474 E026 13.557		
3	R92A.FARP.KI MI	N66 37.800 E026 22.717		
4	R92D.ENTRY. SOUTH	N66 40.400 E026 54.300		
5	R92D.AO.1	N66 45.900 E027 03.717		
6	R92D.AO.2	N66 47.550 E026 54.017		

**COMMS**

Radio	Usage
1	133.50 (PLT)
2	250.55 (TWR)
3	35.35(CPG)

**OTHER FLIGHTS**

Callsign	Mission	Airframe	Freq	TCN	Grpld	Laser
Raptor 1	Training	4x F-16C	134.0	1/64		171X
AO	East Rovaniemi	Task	Tac Formations			
Panther 7	Training	4x F/A-18C	261.35	1/64		157X
AO	ESR01 SAM Range	Task	SAM Tests SA-11 / SA-10			

## RADIO CHANNELS

#	Freq	Name
1		Flight/Squadron specific
2	282.8	Rovaniemi ATIS
3	282.5	Rovaniemi Ground
4	250.55	Rovaniemi Tower
5	320.7	Bodo ATIS
6	250.75	Bodo Tower
7	235.45	Kallax ATIS
8	250.3	Kallax Tower
9	265.0	Texaco-1   KC-135   Medium / Slow   71Y
10	319.8	Arco-1   KC-135   High / Fast   22Y
11	360.8	Shell-1   KC-135 MPRS   High / Fast   41Y
12	304.0	CVN-71 Rough Rider (RRR)   71X
13	303.0	LHA-1 Tarawa (TWA)   79X
14	247.8	S-3B Mauler-1 (MAU)  64Y
15	347.8	Loki (E-2D)
16	348.7	Heimdall (E-3A)
17	242.17	ESR02 - CAS Range Operator
18	34.7	ESR02 - JTAC Odin
19	270.5	Blue
20	270.75	Red

**RAMROD**

0	1	2	3	4	5	6	7	8	9
W	A	I	N	S	C	O	T	E	D

**KTC 1400 C**

	0	1	2	3	4	5	6	7	8	9
A	PUKB	SAF	LYM	IQ	EH	NVR	OT	XW	CG	DJ
B	NAIR	TUV	CXL	ME	WF	KOY	DJ	BH	SP	GQ
C	ASYV	UNK	LJP	OH	IG	BWQ	DT	CE	FR	MX
D	EJHG	TVW	RFI	DL	KM	NAU	CP	BO	YS	QX
E	EDJQ	CKN	SBM	UR	AH	OFL	IV	PY	XG	TW
F	AQRU	XHL	PFK	DN	OM	IYW	GS	BC	EJ	VT
G	BJML	HTW	AUO	CX	GP	YKE	FD	IQ	RV	SN
H	DFXB	IYH	VGP	TS	CJ	LQN	UM	WK	OA	RE
I	NIAV	TXF	YOJ	HE	UB	RDL	QW	MP	SC	GK
J	WHMD	NLE	KRF	UC	OJ	SVX	IY	BT	QG	PA
K	NHDX	AMJ	TFV	SQ	YL	EIB	UO	RG	CK	WP
L	MHDC	JLV	YUX	QG	BK	NPF	ST	WO	EI	RA
M	RTWH	YSC	IKA	MQ	OB	GVU	JF	LN	EX	PD
N	YLVE	NOG	DXH	SK	IT	WAM	PR	QJ	FB	CU
O	MJRE	BYQ	FCA	GX	IO	LSU	KT	PD	HN	WV
P	UFAP	EIK	HLO	WY	CS	DBG	JX	QR	NV	TM
Q	ELCU	PWH	QFB	KO	VG	DTS	AX	IR	JY	MN
R	XUPG	DRQ	YCI	AO	TB	LVN	EF	JW	HS	MK
S	ASYE	TKR	LIB	VD	XJ	WVG	UQ	FP	CH	ON
T	GYFM	XRA	QTC	HS	KI	WDP	LB	OE	JV	UN
U	LKIA	FHV	PTS	DR	MY	NCJ	UQ	EO	XB	WG
V	NTFS	OIH	GCE	MU	PK	BXV	QW	RY	JD	LA
W	BULQ	WSM	PGD	YA	CF	XJN	VK	IO	TE	HR
X	EMRF	VXW	BYD	NG	LH	QSC	JU	OA	TI	PK
Y	EQIK	RMX	GTD	NP	UA	HOC	LB	VJ	YS	FW

**NAVAIDS**

Id	Name	Channel	Position	Elevation
BOO	Bodo	45	N67 15.838 E014 20.046	43
BNK	Banak	47	N70 03.937 E024 58.181	17
OYA	Andoya	28	N69 17.175 E016 08.658	19

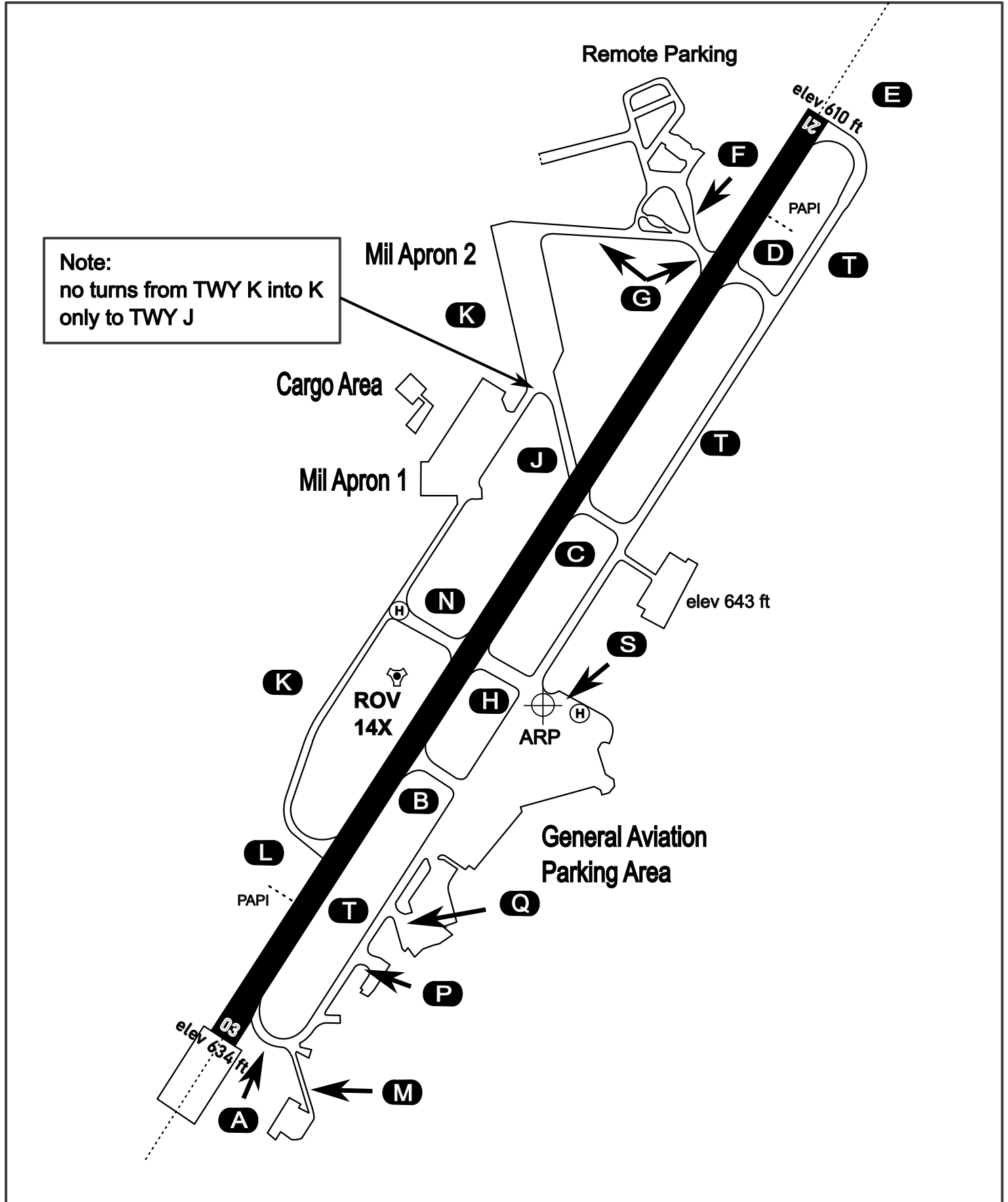
# AERODROME CHART

Rovaniemi Aerodrome

ARP N66° 33' 42" E025° 49' 51"

elev 643 ft

## ROVANIEMI, FINLAND

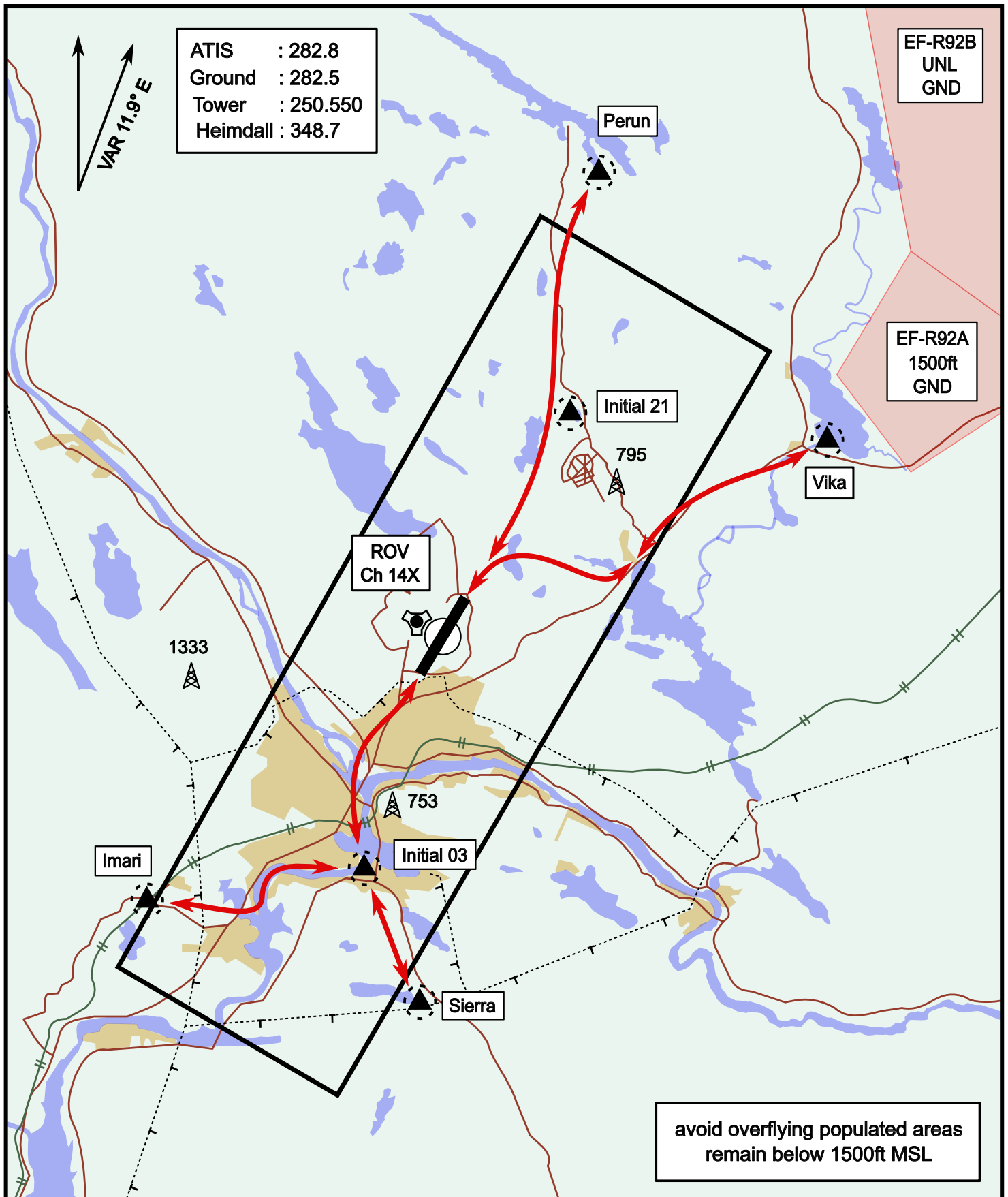


ATIS	Ground	Tower	Radar
282.800	282.500	250.550	348.700

# Helicopter Routing

elev 643 ft

# Rovaniemi, Finland



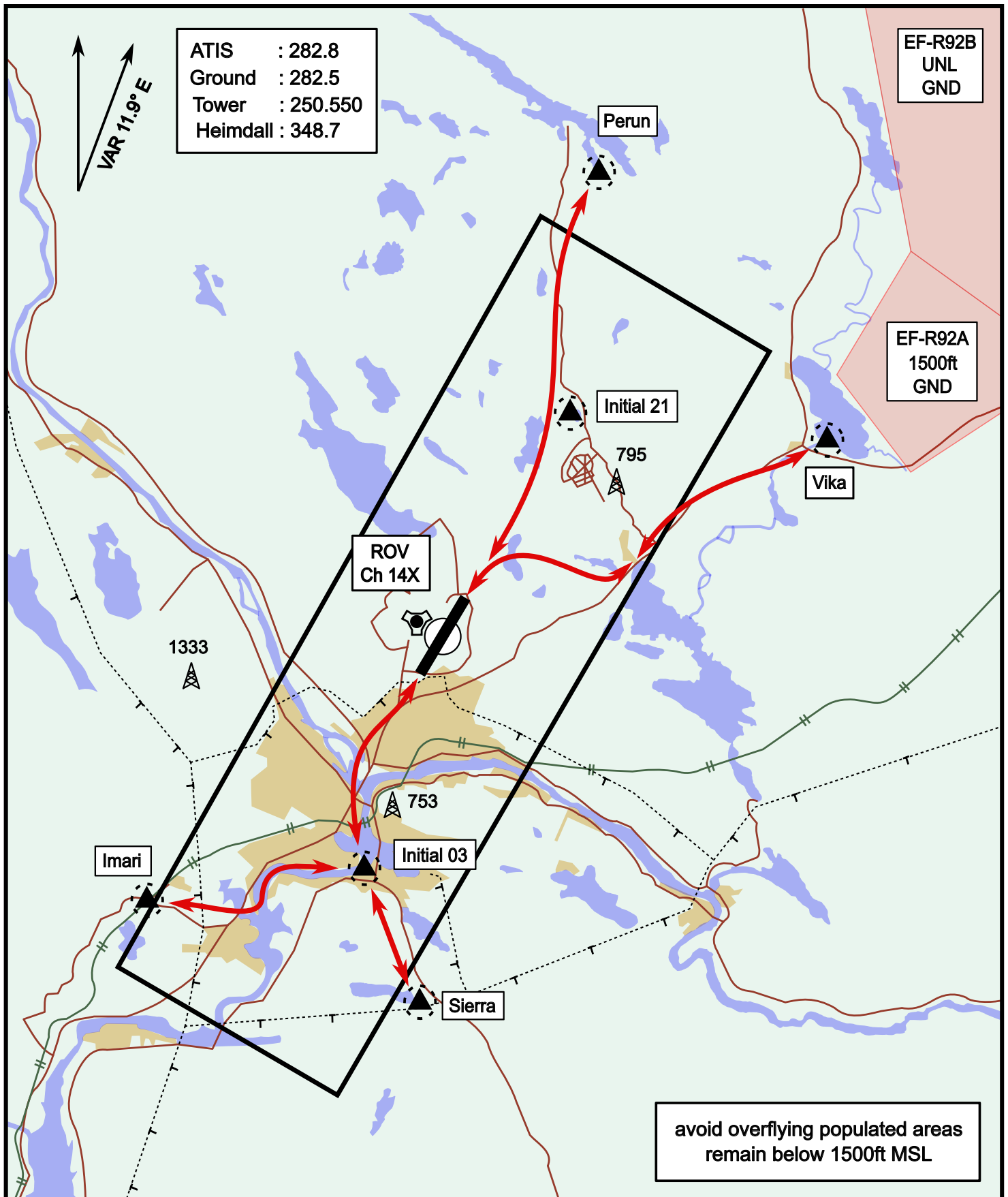
Vika	N66° 37.474 / E026° 13.557	Sierra	N66° 25.711 / E025° 46.610
Perun	N66° 44.135 / E026° 01.630	Imari	N66° 28.406 / E025° 31.291
Initial21	N66° 38.421 / E025° 58.682	Initial03	N66° 28.793 / E025° 44.105



# Helicopter Routing

elev 643 ft

# Rovaniemi, Finland



Vika	N66° 37.474 / E026° 13.557	Sierra	N66° 25.711 / E025° 46.610
Perun	N66° 44.135 / E026° 01.630	Imari	N66° 28.406 / E025° 31.291
Initial21	N66° 38.421 / E025° 58.682	Initial03	N66° 28.793 / E025° 44.105