

**MISSION DATA CARD**

OPORD		Callsign		Mission		Date/Time		
3744/2025		Raptor 1		Training		112100MAR25		
Task						Freq		
AO						134.0		
Departure				Recovery				
VFR Depature				VFR Approach				
#	Callsign		Pilot		IFF	TCN	LSR	NET
-1	Raptor 1-1		Meteor		1611	1Y	1621	

**LOADOUT**

A/A						GUN	
A/G						CHF	
POD						FLR	
TKS						FUEL	

**TOLD**

	Takeoff	Target	Joker	Bingo	Land
FUEL	7163				

**AIRBASES**

	Name	TCN	ATIS	GND	TWR	RWY	Elev	ILS
Dep	Rovaniemi	14X	282.8	282.5	250.55	21	643	111.7
Arr	Rovaniemi	14X	282.8	282.5	250.55	21	643	111.7
Div	Kemi Tornio	106X			250.3	36	62	110.9

**FLIGHTPLAN**

#	Name	Navaid/Coords/DME	ALT	TOT
1	IMARI	N66 28.406 E025 31.291	3000	
2	NEMGU	N66 20.400 E024 41.650	10000	
3	Kemi	N65 46.874 E024 34.921	10000	
4	IBSAN	N66 42.500 E025 01.083	10000	
5	PERUN	N66 44.135 E026 01.630	3000	
6	RVNInit21	N66 38.642 E025 58.682	2500	

**SUPPORT****Tanker**

Callsign	TCN	Freq	ALT	TAS
ARCO 1	22Y	319.8		
Pos				

**OTHER FLIGHTS**

Callsign	Mission	Airframe	Freq	TCN	Grpld	Laser
Tiger 1	Training	4x F/A-18C	261.15	1/64	1	155X
AO	ESR01	Task	SEAD / DEAD			

## RADIO CHANNELS

#	Freq	Name
1		Flight/Squadron specific
2	282.8	Rovaniemi ATIS
3	282.5	Rovaniemi Ground
4	250.55	Rovaniemi Tower
5	320.7	Bodo ATIS
6	250.75	Bodo Tower
7	235.45	Kallax ATIS
8	250.3	Kallax Tower
9	265.0	Texaco-1   KC-135   Medium / Slow   71Y
10	319.8	Arco-1   KC-135   High / Fast   22Y
11	360.8	Shell-1   KC-135 MPRS   High / Fast   41Y
12	304.0	CVN-71 Rough Rider (RRR)   71X
13	303.0	LHA-1 Tarawa (TWA)   79X
14	247.8	S-3B Mauler-1 (MAU)  64Y
15	347.8	Loki (E-2D)
16	348.7	Heimdall (E-3A)
17	242.17	ESR02 - CAS Range Operator
18	34.7	ESR02 - JTAC Odin
19	270.5	Blue
20	270.75	Red

**RAMROD**

0	1	2	3	4	5	6	7	8	9
T	H	U	M	B	N	A	I	L	S

**KTC 1400 C**

	0	1	2	3	4	5	6	7	8	9
A	UOYP	WDG	KJN	BR	FX	QTS	AI	MV	HE	CL
B	CAXI	PWJ	YQG	VR	SM	FLO	ET	DB	UK	NH
C	HDXP	LJW	SEM	RF	YC	UOI	NK	QG	AT	BV
D	FIOR	PMK	VAH	UW	CJ	YNB	LT	ES	XG	DQ
E	VOWQ	EYI	RNH	FX	AT	DUP	CM	KJ	BS	LG
F	GUHL	BWR	CQE	AP	MK	TNY	OI	DX	VJ	SF
G	UFIH	YEQ	NDR	TK	SJ	GPB	OC	ML	AV	WX
H	VNLS	FIJ	MDP	GR	XO	ACQ	HU	YT	WK	BE
I	KFNV	WLI	HRA	OX	SU	DBM	ET	QP	GJ	YC
J	AXDY	KPO	WJV	IR	BU	TNL	HF	SG	CE	QM
K	ICBX	JQE	PFA	VK	DO	TNY	LU	GW	SH	RM
L	HIXF	VLM	GJR	KU	DN	TYW	OS	CQ	AB	EP
M	HAFM	YKE	OUN	LQ	PJ	VIC	TR	DW	BS	GX
N	JKWL	SBQ	IHV	TF	AN	CGO	YE	UP	DX	MR
O	APTK	NJE	IBF	DL	UX	MWG	CO	HS	QY	VR
P	VTUW	MGR	PJL	SB	YO	HKN	IQ	FC	DE	AX
Q	USPF	XBC	OYM	KD	TV	IER	JQ	AW	NL	HG
R	YOLV	GSB	KQI	DW	NX	AEH	FC	RJ	TM	UP
S	WAJV	ORM	YTI	SE	HC	XQG	UN	KL	DF	PB
T	SKOB	ELG	CIP	WY	MQ	UAF	DR	TH	XN	JV
U	VKBR	LJE	DGM	OA	YU	WQP	CX	IT	FH	SN
V	WYGS	KJA	QDO	BI	VR	HLM	PX	FN	TE	CU
W	CWJY	GSU	ITA	OQ	PM	BKD	EL	HX	RN	VF
X	BYNV	PLR	MET	AH	DC	FQX	OG	KS	WI	UJ
Y	UKRQ	GOD	SFE	NA	IB	TLP	VX	CW	HY	JM

**NAVAIDS**

Id	Name	Channel	Position	Elevation
BOO	Bodo	45	N67 15.838 E014 20.046	43
BNK	Banak	47	N70 03.937 E024 58.181	17
OYA	Andoya	28	N69 17.175 E016 08.658	19

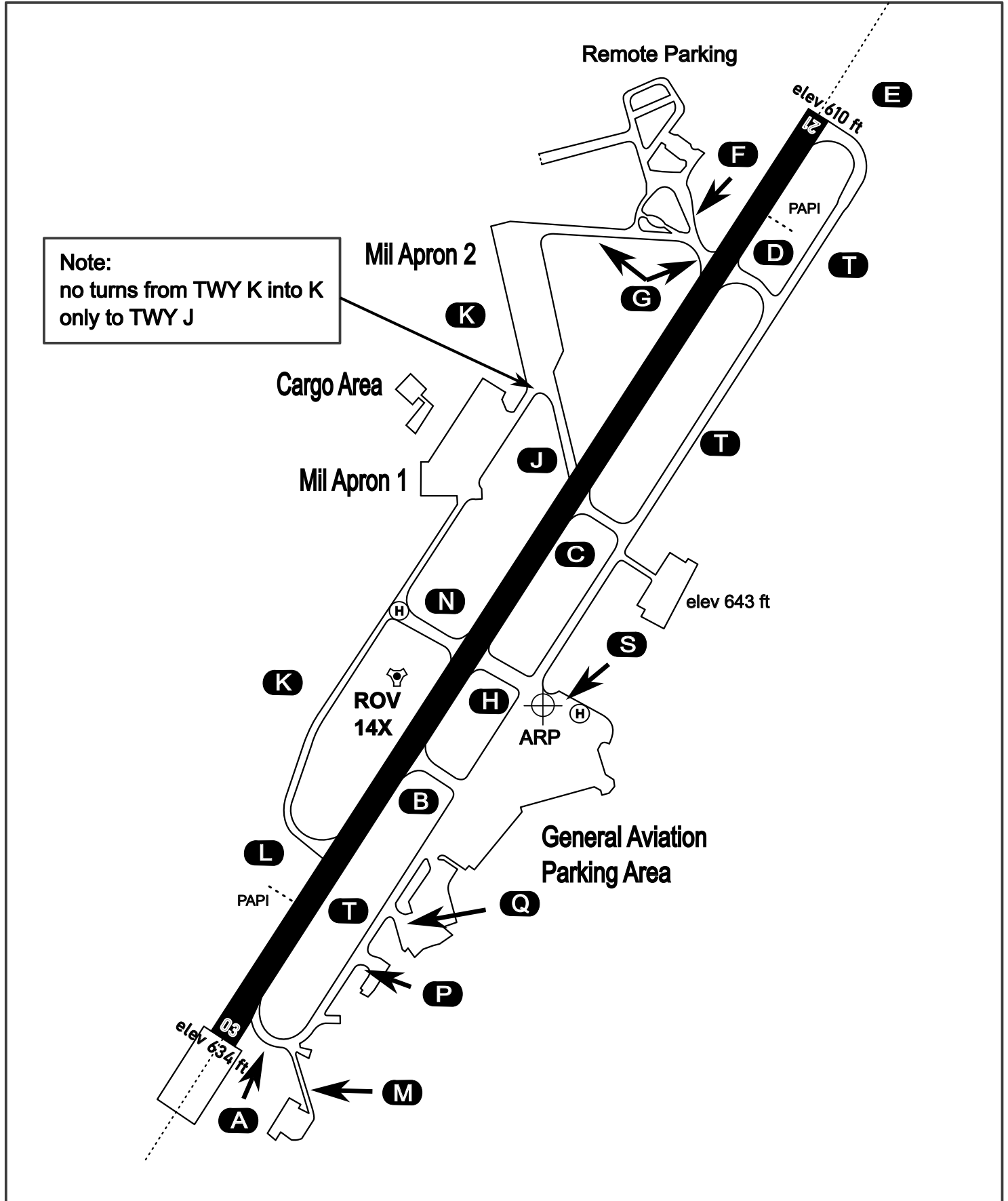
# AERODROME CHART

Rovaniemi Aerodrome

ARP N66° 33' 42" E025° 49' 51"

elev 643 ft

## ROVANIEMI, FINLAND



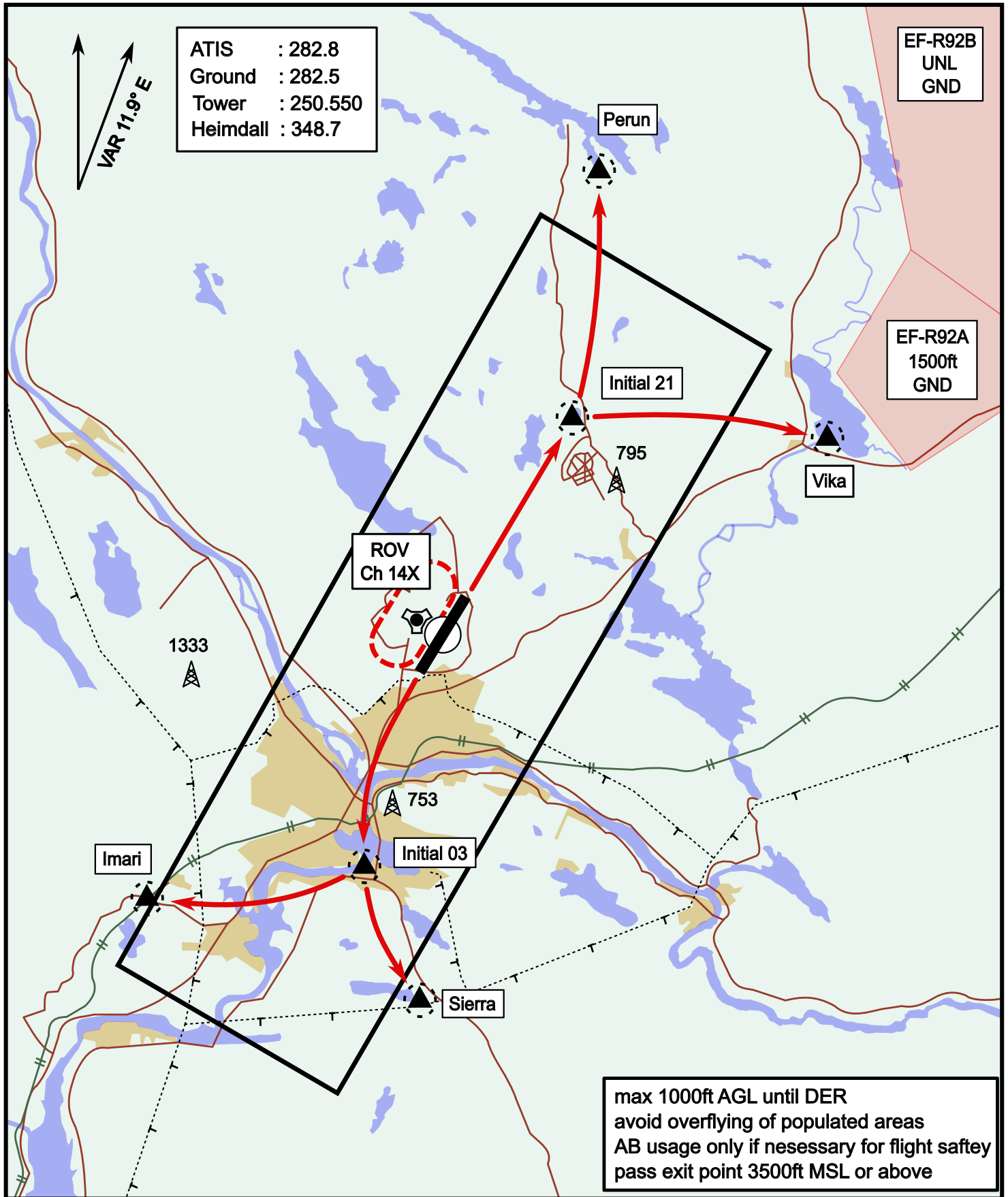
ATIS	Ground	Tower	Radar
282.800	282.500	250.550	348.700



# Visual Departure Jet

elev 643 ft

# Rovaniemi, Finland

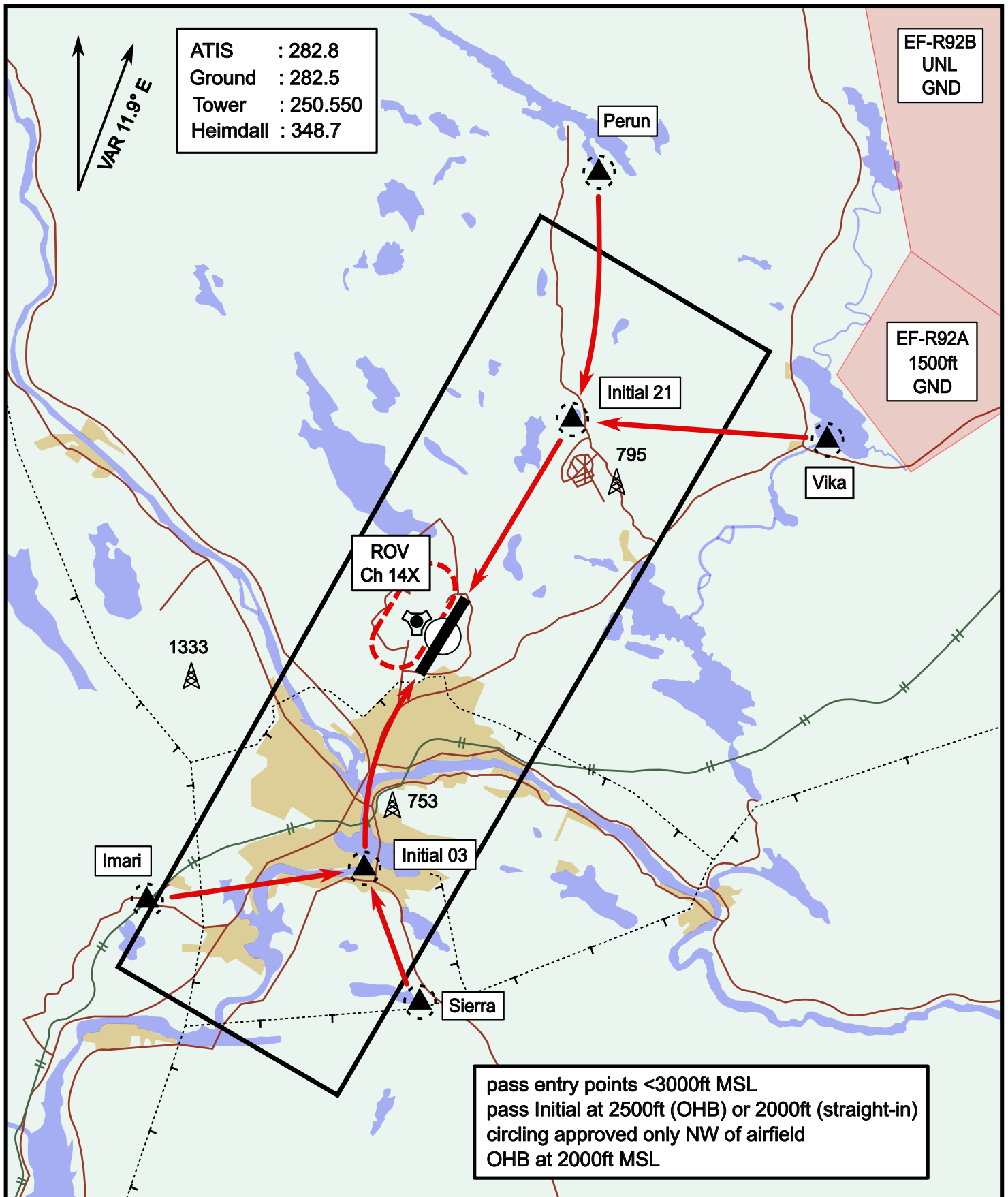


Vika	N66° 37.474 / E026° 13.557	Sierra	N66° 25.711 / E025° 46.610
Perun	N66° 44.135 / E026° 01.630	Imari	N66° 28.406 / E025° 31.291
Initial21	N66° 38.421 / E025° 58.682	Initial03	N66° 28.793 / E025° 44.105

# Visual Approach Jet

elev 643 ft

# Rovaniemi, Finland



Vika	N66° 37.474 / E026° 13.557	Sierra	N66° 25.711 / E025° 46.610
Perun	N66° 44.135 / E026° 01.630	Imari	N66° 28.406 / E025° 31.291
Initial21	N66° 38.421 / E025° 58.682	Initial03	N66° 28.793 / E025° 44.105

**NOT AVAILABLE**

**NOT AVAILABLE**