

**MISSION DATA CARD**

OPORD		Callsign		Mission		Date/Time		
3742/2025		Raptor 1		Training		132000MAR25		
Task	Tac Formations					Freq		
AO	East Rovaniemi					134.0		
Departure				Recovery				
VFR Departure				VFR Approach				
#	Callsign		Pilot		IFF	TCN	LSR	NET
-1	Raptor 1-1		Nerkub		1611	1Y	1711	
-2	Raptor 1-2		Meteor		1612	64Y	1712	
-3	Raptor 1-3		Beathovenz		1613	64X	1713	
-4	Raptor 1-4		Jinx		1614	1X	1714	

**LOADOUT**

A/A	2xA120C, 2xA9X				GUN	100% HEI-T	
A/G					CHF	60	
POD					FLR	60	
TKS	FT300				FUEL	100%	

**TOLD**

	Takeoff	Target	Joker	Bingo	Land
FUEL	9166				

**AIRBASES**

	Name	TCN	ATIS	GND	TWR	RWY	Elev	ILS
Dep	Rovaniemi	14X	282.8	282.5	250.55	21	643	111.7
Arr	Rovaniemi	14X	282.8	282.5	250.55	21	643	111.7
Div	Kemi Tornio	106X			250.3	36	62	110.9

**FLIGHTPLAN**

#	Name	Navaid/Coords/DME	ALT	TOT
1	PERUN	N66 44 08.120 E026 01 37.812	3000	
2	VIKA	N66 37 28.469 E026 13 33.460	3000	
3	SIERRA	N66 25 42.681 E025 46 36.642	3000	
4	IMARI	N66 28 24.377 E025 31 17.480	3000	
5	NEMGU	N66 20 24.029 E024 41 39.025	3000	
6	Kemi Tornio	N65 46 53.344 E024 34 56.221	3000	
7	RENVİ	N66 04 33.600 E025 31 54.003	3000	
8	IBSAN	N66 42 30.019 E025 01 04.824	3000	
9	Rovaniemi	N66 33 53.445 E025 49 49.755	2000	

**OTHER FLIGHTS**

Callsign	Mission	Airframe	Freq	TCN	Grpld	Laser
Cobra 3	Training	4x AH-64D	264.05	1/64		170X
AO	R92D	Task				
Panther 7	Training	4x F/A-18C	261.35	1/64		157X
AO	ESR01 SAM Range	Task	SAM Tests SA-11 / SA-10			

## RADIO CHANNELS

#	Freq	Name
1		Flight/Squadron specific
2	282.8	Rovaniemi ATIS
3	282.5	Rovaniemi Ground
4	250.55	Rovaniemi Tower
5	320.7	Bodo ATIS
6	250.75	Bodo Tower
7	235.45	Kallax ATIS
8	250.3	Kallax Tower
9	265.0	Texaco-1   KC-135   Medium / Slow   71Y
10	319.8	Arco-1   KC-135   High / Fast   22Y
11	360.8	Shell-1   KC-135 MPRS   High / Fast   41Y
12	304.0	CVN-71 Rough Rider (RRR)   71X
13	303.0	LHA-1 Tarawa (TWA)   79X
14	247.8	S-3B Mauler-1 (MAU)  64Y
15	347.8	Loki (E-2D)
16	348.7	Heimdall (E-3A)
17	242.17	ESR02 - CAS Range Operator
18	34.7	ESR02 - JTAC Odin
19	270.5	Blue
20	270.75	Red

**RAMROD**

0	1	2	3	4	5	6	7	8	9
W	A	I	N	S	C	O	T	E	D

**KTC 1400 C**

	0	1	2	3	4	5	6	7	8	9
A	PUKB	SAF	LYM	IQ	EH	NVR	OT	XW	CG	DJ
B	NAIR	TUV	CXL	ME	WF	KOY	DJ	BH	SP	GQ
C	ASYV	UNK	LJP	OH	IG	BWQ	DT	CE	FR	MX
D	EJHG	TVW	RFI	DL	KM	NAU	CP	BO	YS	QX
E	EDJQ	CKN	SBM	UR	AH	OFL	IV	PY	XG	TW
F	AQRU	XHL	PFK	DN	OM	IYW	GS	BC	EJ	VT
G	BJML	HTW	AUO	CX	GP	YKE	FD	IQ	RV	SN
H	DFXB	IYH	VGP	TS	CJ	LQN	UM	WK	OA	RE
I	NIAV	TXF	YOJ	HE	UB	RDL	QW	MP	SC	GK
J	WHMD	NLE	KRF	UC	OJ	SVX	IY	BT	QG	PA
K	NHDX	AMJ	TFV	SQ	YL	EIB	UO	RG	CK	WP
L	MHDC	JLV	YUX	QG	BK	NPF	ST	WO	EI	RA
M	RTWH	YSC	IKA	MQ	OB	GVU	JF	LN	EX	PD
N	YLVE	NOG	DXH	SK	IT	WAM	PR	QJ	FB	CU
O	MJRE	BYQ	FCA	GX	IO	LSU	KT	PD	HN	WV
P	UFAP	EIK	HLO	WY	CS	DBG	JX	QR	NV	TM
Q	ELCU	PWH	QFB	KO	VG	DTS	AX	IR	JY	MN
R	XUPG	DRQ	YCI	AO	TB	LVN	EF	JW	HS	MK
S	ASYE	TKR	LIB	VD	XJ	WMG	UQ	FP	CH	ON
T	GYFM	XRA	QTC	HS	KI	WDP	LB	OE	JV	UN
U	LKIA	FHV	PTS	DR	MY	NCJ	UQ	EO	XB	WG
V	NTFS	OIH	GCE	MU	PK	BXV	QW	RY	JD	LA
W	BULQ	WSM	PGD	YA	CF	XJN	VK	IO	TE	HR
X	EMRF	VXW	BYD	NG	LH	QSC	JU	OA	TI	PK
Y	EQIK	RMX	GTD	NP	UA	HOC	LB	VJ	YS	FW

**NAVAIDS**

Id	Name	Channel	Position	Elevation
BOO	Bodo	45	N67 15.838 E014 20.046	43
BNK	Banak	47	N70 03.937 E024 58.181	17
OYA	Andoya	28	N69 17.175 E016 08.658	19

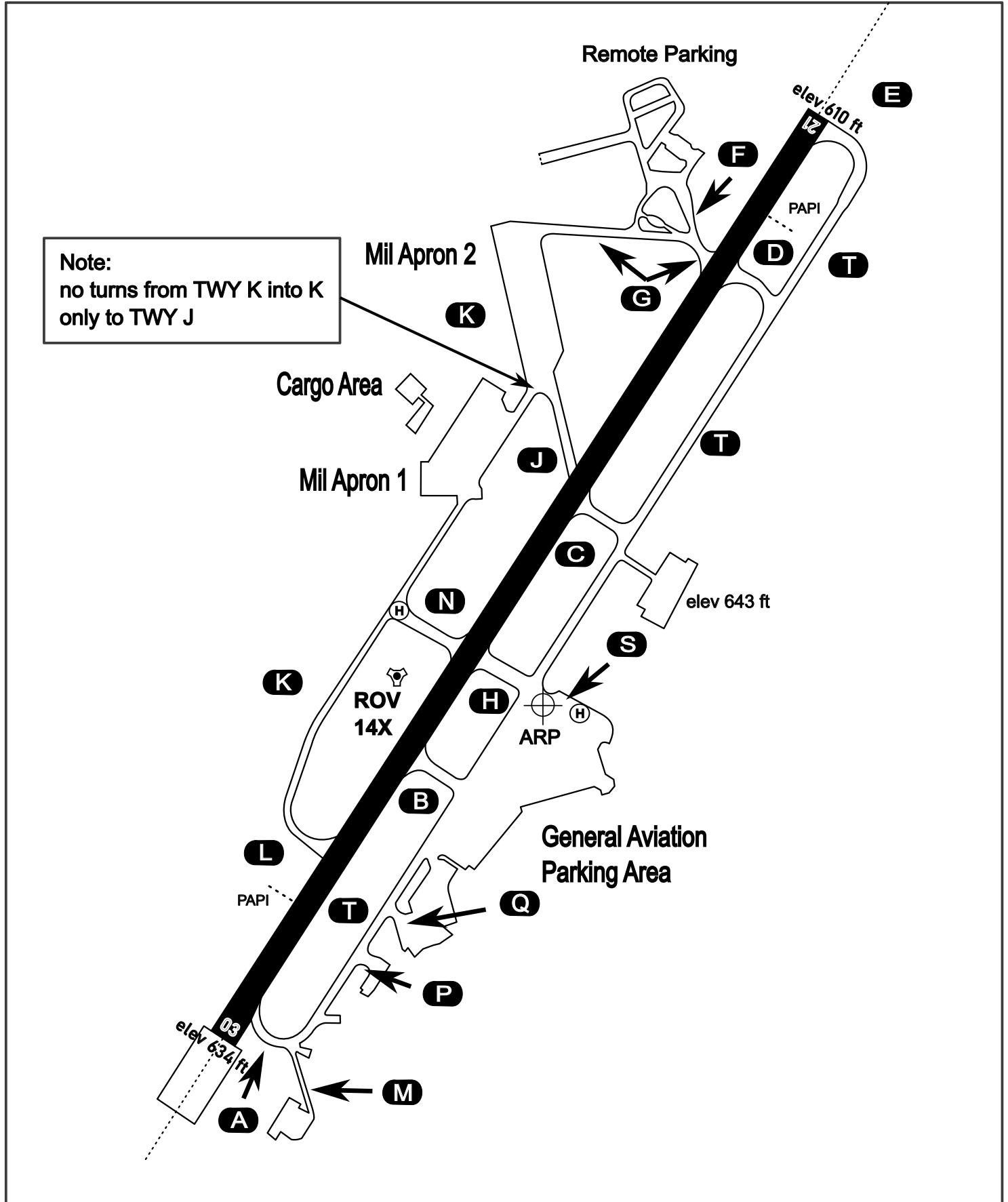
# AERODROME CHART

Rovaniemi Aerodrome

ARP N66° 33' 42" E025° 49' 51"

elev 643 ft

## ROVANIEMI, FINLAND

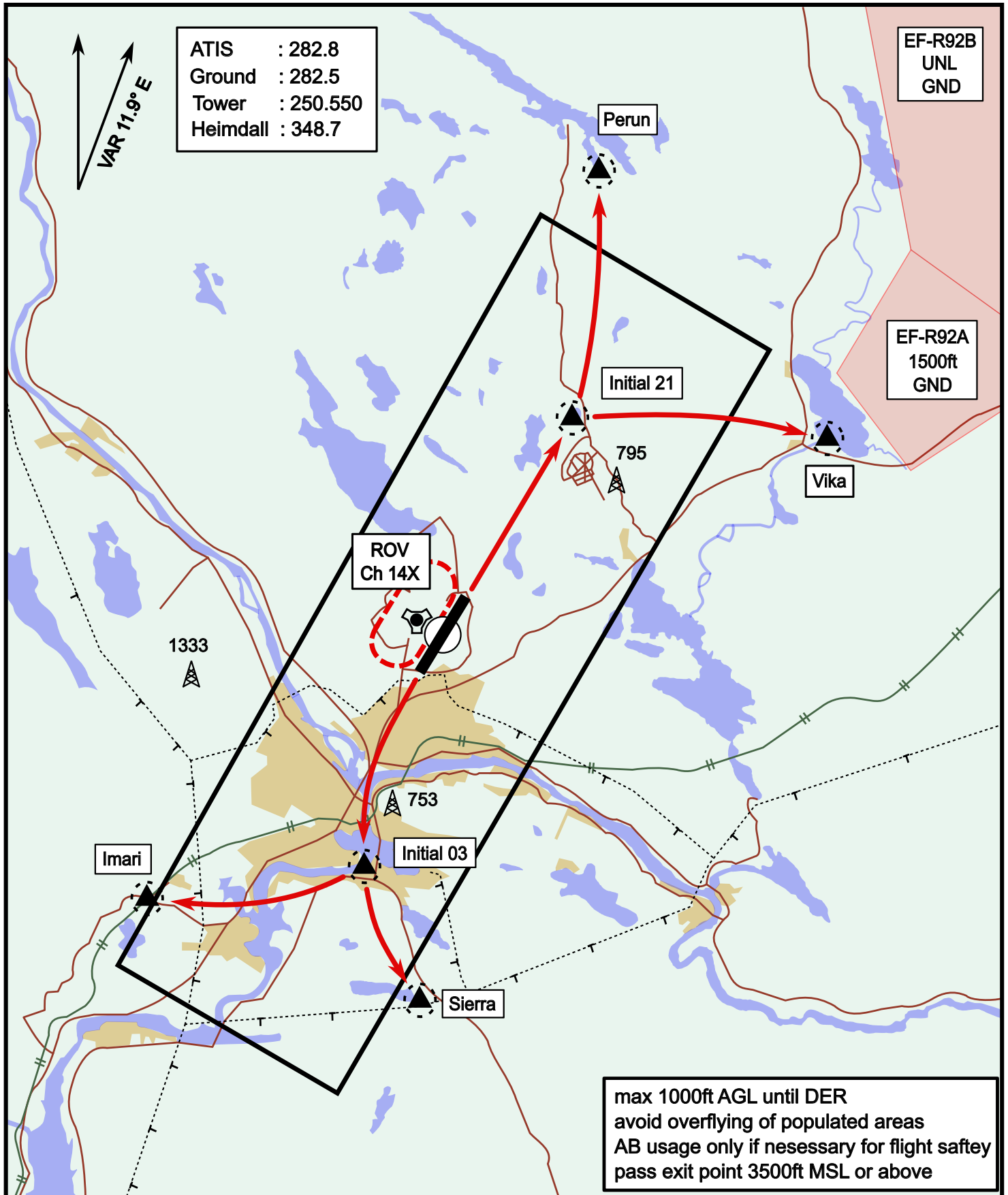


ATIS	Ground	Tower	Radar
282.800	282.500	250.550	348.700

# Visual Departure Jet

elev 643 ft

# Rovaniemi, Finland



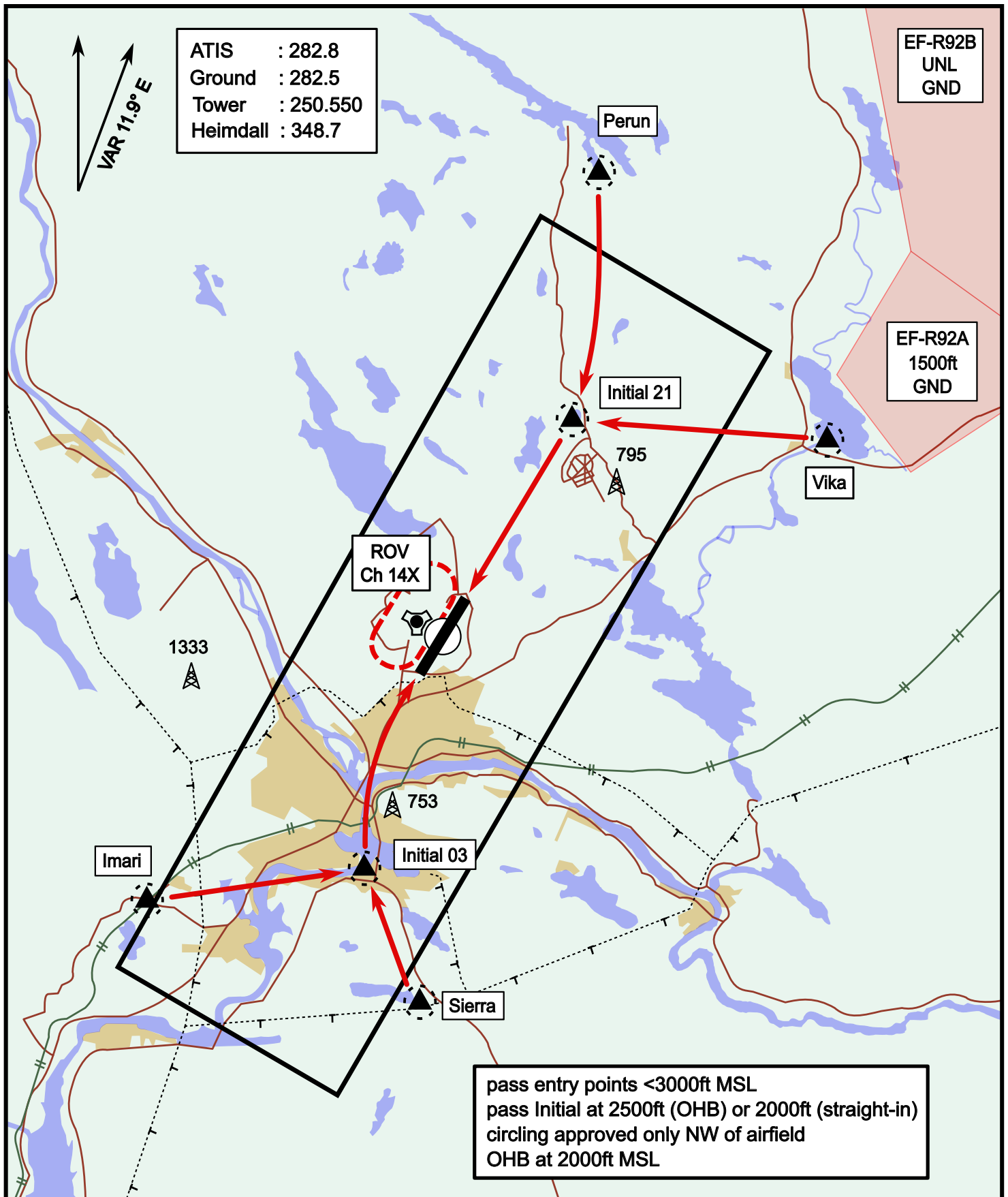
Vika	N66° 37.474 / E026° 13.557	Sierra	N66° 25.711 / E025° 46.610
Perun	N66° 44.135 / E026° 01.630	Imari	N66° 28.406 / E025° 31.291
Initial21	N66° 38.421 / E025° 58.682	Initial03	N66° 28.793 / E025° 44.105



# Visual Approach Jet

elev 643 ft

# Rovaniemi, Finland



Vika	N66° 37.474 / E026° 13.557	Sierra	N66° 25.711 / E025° 46.610
Perun	N66° 44.135 / E026° 01.630	Imari	N66° 28.406 / E025° 31.291
Initial21	N66° 38.421 / E025° 58.682	Initial03	N66° 28.793 / E025° 44.105

**NOT AVAILABLE**

**NOT AVAILABLE**