

MISSION DATA CARD

OPORD		Callsign	Mission	Date/Time			
3741/2025		Knight* 6	Strike	142232MAR25			
Task	ATO1010					Freq	
AO	Aleppo					264.05	
Departure			Recovery				
CAT			CASE III				
#	Callsign	Pilot	IFF	TCN	LSR	NET	

LOADOUT

A/A	2xA9X, A120C	GUN	100% HEI-T
A/G	4xG38	CHF	80
POD	TGP	FLR	40
TKS	3xFPU-8A	FUEL	100%

TOLD

	Takeoff	Target	Joker	Bingo	Land
FUEL	17535				

AIRBASES

	Name	TCN	ATIS	GND	TWR	RWY	Elev	ILS
Dep	CVN-73 USS G. Washington	55X		ICLS 12	304.0			
Arr	CVN-73 USS G. Washington	55X		ICLS 12	304.0			
Div	Akrotiri AFB	107X	288.2	240.1	339.85	28	62	109.7

FLIGHTPLAN

#	Name	Navaid/Coords/DME	ALT	TOT
1	Hold RNDVZ	N36 21 43.560 E036 17 17.585	23000	
2	TGT	N36 10 34.218 E037 04 57.563	1525.591 97834646	
3	3	N36 21 43.204 E036 17 17.389	23000	
4	4	N35 52 05.218 E034 01 04.193	0	

COMMS

Radio	Usage
1	377.8 (OVRLD)
2	248.8 SHLL1 / 134.1 JMP5 /
3	MIDS-A 06
4	MIDS-B 44

NOTES

WP2 HOLD/RNDVZ

Zerstörung der Lagerstätten für chemische Waffen im westlichen Aleppo,
Zerstörung des HQ's und Suchen und Zerstören von geparkten Scud Launchern.

Start in Incirlik bzw Carrier. Checkin on Darkstar und der Route folgen.

Am Holding/Rendezvous Point warten bis das komplette Package bereit ist.

Panther-3 startet mit der Unterdrückung der SAM Stellungen. SA-2 im Süden und SA-3 im Norden.

Nach Unterdrückung der SAM Stellungen rücken die Striker (Jump & Knight) und DEAD (Sword) Flights vor, um Ihre Ziele anzugreifen. Dabei kümmert sich Knight um die Chemical Weapons Storages. Jump übernimmt die Zerstörung des HQ Gebäudes und sucht & zerstört die SCUD Launcher. [?]

Threats:

SA-3, SA-2, AAA, Manpads, Shorad

Vultime/ToT:

DEAD & SEAD Push nachdem SA-3 suppressed

Comms[?]

Knight-6 [?]IDS 6

Jump-5 [?]4.150

Panther-3 [?]IDS 3

Sword-3 [?]1.850

Overlord [?]7.8

Wizard [?]5.6

Texaco 1 [?]48.7 (11Y)

Shell 1 [?]48.8 (12Y)

SUPPORT**Tanker**

Callsign	TCN	Freq	ALT	TAS
ARCO 2	41Y	360.8	FL220	400
Pos	ARCO2: (N3653 E03452)			

OTHER FLIGHTS

Callsign	Mission	Airframe	Freq	TCN	Grpld	Laser
Nazgul 1	Strike	4x F-15E	131.65	1/64		156X
AO	Syria	Task	ATO 1030 - Southern Target			
Tiger 1	DEAD	4x F/A-18C	261.15	1/64	1	155X
AO	Al Safira 260B280	Task	ATO 1050 DEAD			
Joker* 1	Transport	4x CH-47F	133.75	1/64		170X
AO		Task				
Raptor 1	SEAD	4x F-16C	130.5	1/64		162X
AO	Al Safira	Task	ATO 1050 SEAD			
Rattler 5	Training	4x AH-64D	133.5	1/64		125X
AO	ATO 1020	Task	CAS			
Raptor 3	Strike	2x F-16C	130.7	5/68		169X
AO	Al Safira	Task	ATO 1050 STRIKE			
Raptor 7	Training	4x F-16C	129.3	1/64		170X
AO	Mako 6	Task	ATO 1060			
Devil* 4	CAS	4x A-10C	132.55	1/64		164X
AO	Minakh AB	Task	ATO 1020 CAS			
Monster 1	CAS	4x A-10C	132.15	16/79	21	161X
AO	Minakh Airfield	Task	Air Assault Minakh Airfield			

RADIO CHANNELS

#	Freq	Name
1		Flight/Squadron specific
2	288.2	Akrotiri ATIS
3	240.1	Akrotiri Ground
4	339.85	Aktrotiri Tower
5	335.05	Akrotiri Approach
6	360.1	Incirlik Tower
7	371.35	Incirlik Ground
8	377.475	Incirlik ATIS
9		No Preset
10	127.3	Paphos ATIS
11	353.8	Paphos Tower
12	304.0	CVN-73 George Washington
13	302.0	LHA-1 Tarawa
14	259.0	CV-59 Forrestal
15		No Preset
16	377.8	Overlord
17	265.0	KC-135 Texaco-1 medium/slow
18	319.8	KC-135 Arco-1
19	360.8	KC-135MPRS Arco-2
20	256.0	S-3B Recovery Tanker

RAMROD

0	1	2	3	4	5	6	7	8	9
H	A	R	M	O	N	I	Z	E	D

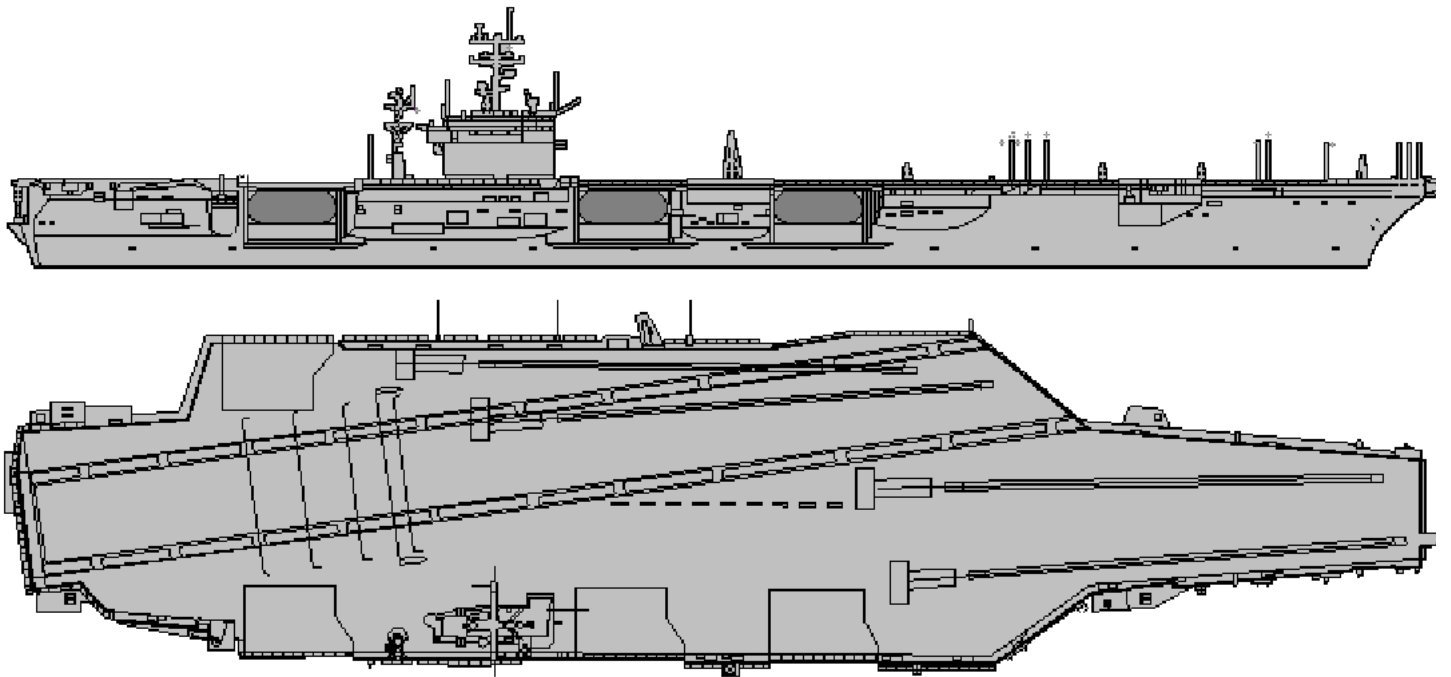
KTC 1400 C

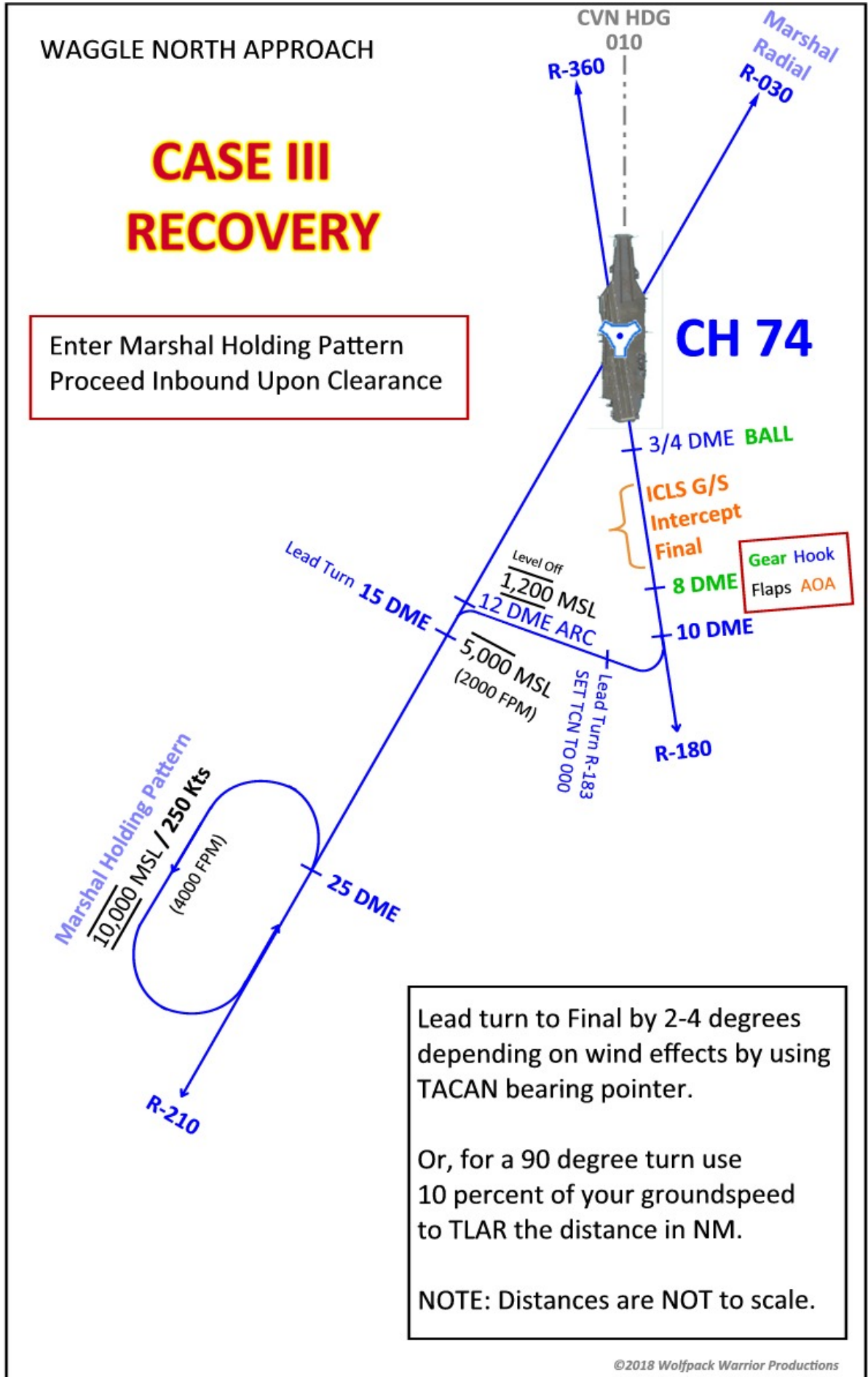
	0	1	2	3	4	5	6	7	8	9
A	TBDY	AVR	XPJ	GQ	UE	MWO	HN	CS	LF	KI
B	ASJQ	FKB	RIU	GW	HO	EVX	LM	NT	CP	YD
C	THXB	YUK	PLS	MG	DW	QAR	EV	IF	CO	JN
D	AOBG	RSW	KUH	LJ	DC	IQN	PM	XT	VY	FE
E	PEBF	JVX	KQL	CN	TW	OGY	AH	UR	SI	DM
F	YPXL	MNK	FWA	QS	IE	DTB	HU	VR	JG	CO
G	MLJR	KCQ	EUT	YB	PI	HXW	GA	FS	DV	NO
H	IHQU	JYT	BVC	RP	GE	MDF	LO	SX	NW	AK
I	NKBH	IDE	YTS	XU	WV	RJF	MG	LP	OQ	CA
J	OPQK	IHN	RJB	MU	WD	CEA	LY	VS	GT	XF
K	UOEY	GFX	PRH	QK	SI	BDJ	CN	VW	LT	AM
L	KBRG	WFS	UXL	VO	EC	PDM	YA	HQ	NI	TJ
M	GLHO	MKU	SCW	VP	ED	QRB	FY	TJ	IN	AX
N	KYEH	BUC	MTO	XG	VS	WPL	IN	FD	QR	JA
O	UNPA	KQR	TJW	HD	YG	FLM	OI	VC	SB	EX
P	YCSO	LGW	QBE	FT	MX	DUK	JA	HV	IP	RN
Q	WDCS	QVY	UPT	BI	XK	GOR	HJ	NE	FA	ML
R	CIYJ	DGV	BUQ	NH	OE	APF	SL	RM	TX	WK
S	KPGF	OIU	TQY	DL	XH	CWA	EJ	BM	RS	NV
T	IHPL	WAT	XMG	QC	JB	EOK	UF	RN	SV	YD
U	IRHL	USD	KCY	OG	FW	XME	VN	QA	TB	PJ
V	JISG	AWX	OBU	TH	LK	MYF	RQ	EV	DP	CN
W	TEXD	RNF	KGQ	JU	MV	IAC	LP	WO	SH	BY
X	TOGA	SWM	HIL	YQ	FN	EUC	PB	JX	RD	KV
Y	JXYT	IEB	NRH	GP	WL	UMO	SQ	FV	KA	DC

NAVAIDS

Id	Name	Channel	Position	Elevation
DAN	Incirlik	21	N37 00.950 E035 26.883	243
AKR	Akrotiri	107	N34 34.765 E032 57.769	147
PHA	Paphos	79	N34 42.997 E032 28.963	35
RMD	Ramat David	84	N32 39.892 E035 11.265	136
OS66	Kuweires Military Aviation Institute	36	N36 11.362 E037 34.226	1200



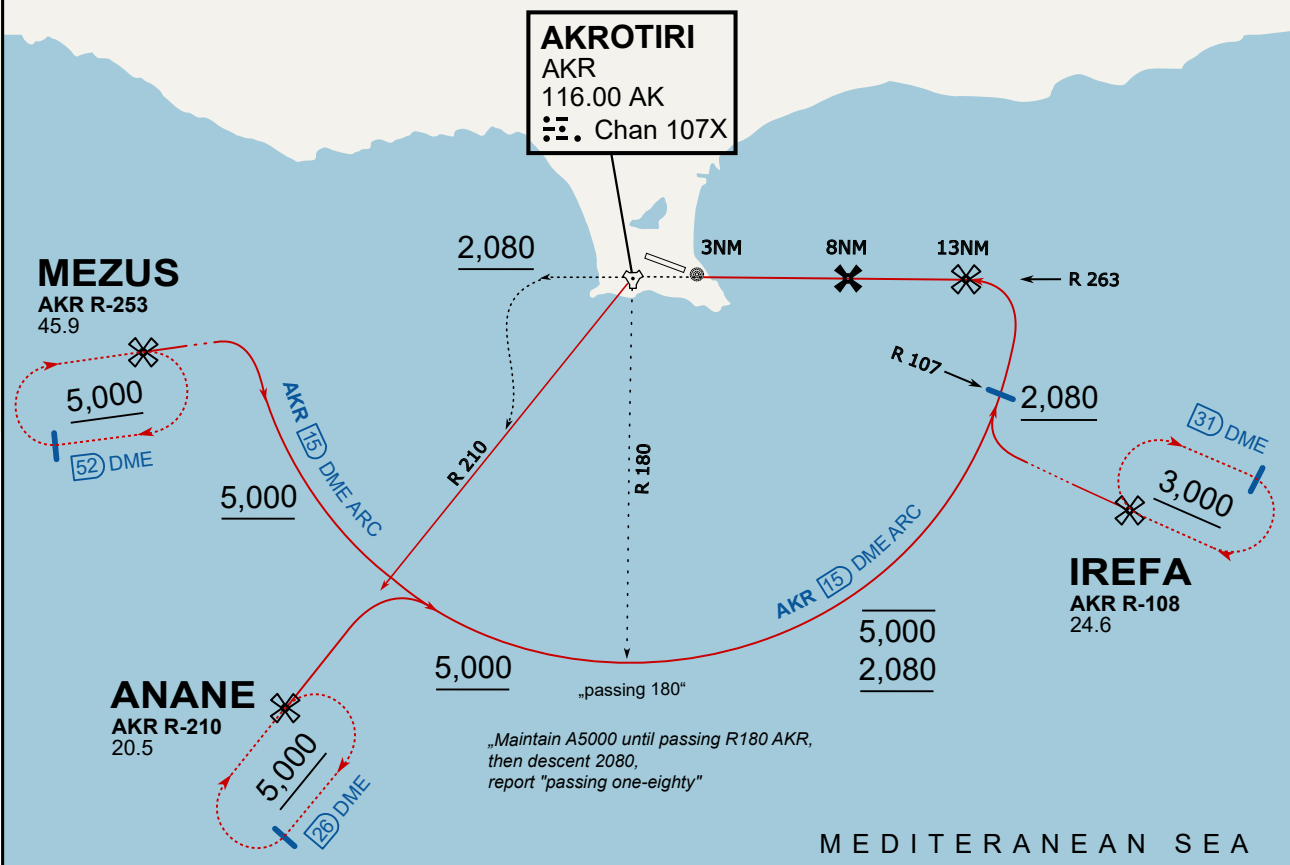




ATIS
 288.200
AKROTIRI GROUND
 122.100
AKROTIRI TOWER
 339.850
APP (OVERLORD)
 377.800

NOT FOR CIVIL USE

CAUTION: If unable to comply with restrictions advise ATC prior to departure.



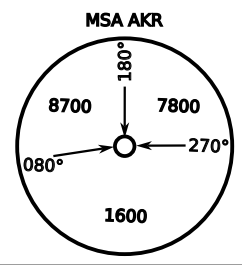
On Track 263° climb A 4.000'.
 passing 2.080' (2.000' AAL)
 turn left and intercept R-210 AKR
 to ANANE.
 Enter ANANE Holding.



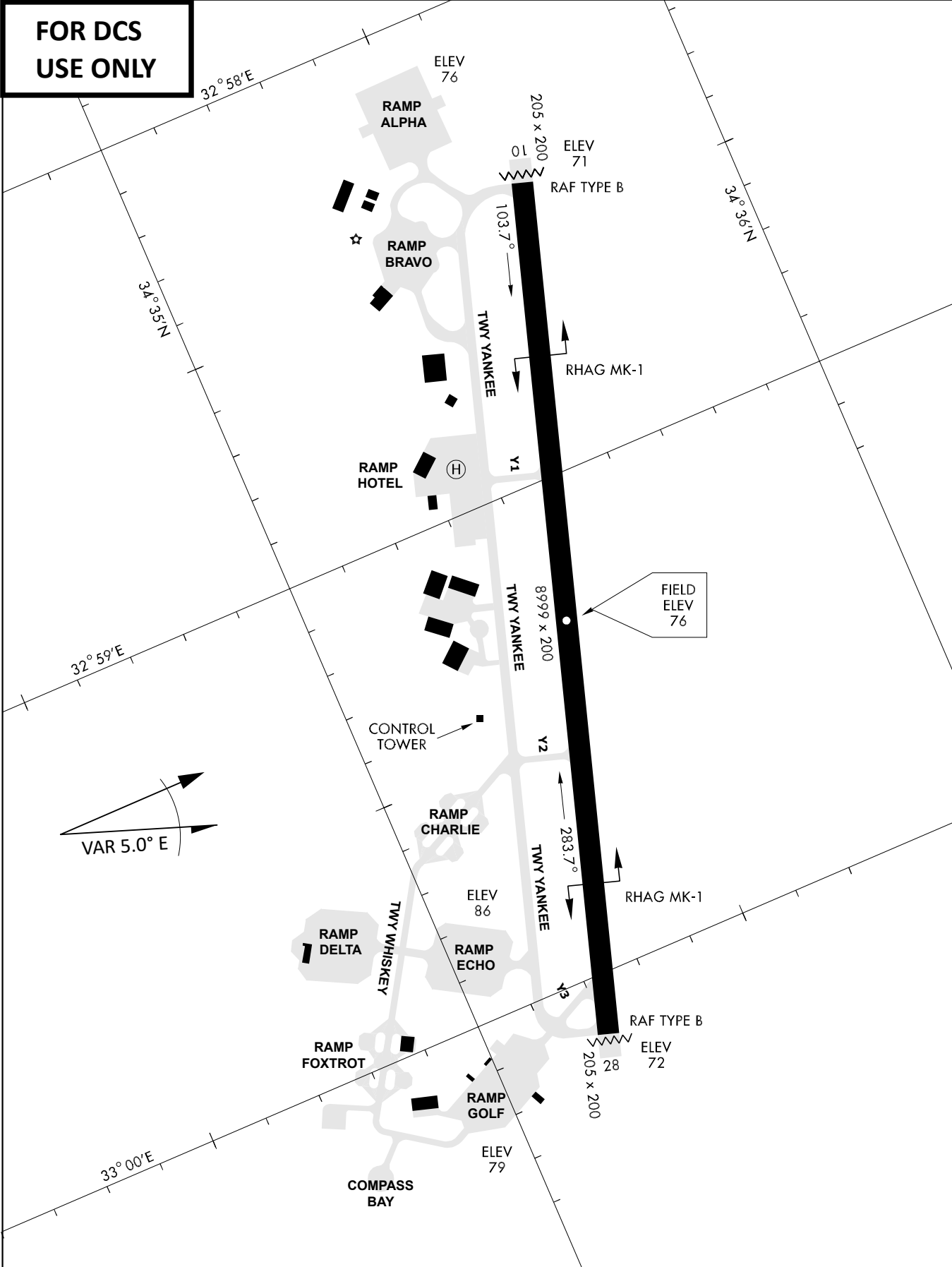
DME AKR	7	6	5	4
ALT	1780	1460	1140	820

THR Elev 74ft DME AKR

CAT	TAC	CIRCLE	GS (kts)	80	120	150	180	210	
A	500(430)	680 (610) 2000m	FAF - MAPt (4.1NM)	3:06	2:03	1:38	1:22	1:10	
B	1300m		RoD (fpm)	420	640	800	950	1110	
C	780 (710) 2600m	N/A	- CIRCLING PROHIBITED N of Rwy						
D			780 (710) 3600m	- final track is offset 20° right of RCL and Intcp 1.1NM before THR					
E			1380 (1310) 5000m	- when established on final contact tower					
			- Timing not Auth to define MAPt						



**FOR DCS
 USE ONLY**



ATIS	AKROTIRI GND	AKROTIRI TWR	OVERLORD CONTROL	TACAN	FIELD ELEVATION
288.20 MHz	240.10 122.10	339.85 130.075	377.8	AKR 107X	75 [ft] 23 [m]