

MISSION DATA CARD

OPORD		Callsign		Mission		Date/Time		
3740/2025		Nazgul 6		Training		102000MAR25		
Task						Freq		
AO						262.45		
Departure				Recovery				
SID RWY 03				ILS RWY 21				
#	Callsign		Pilot		IFF	TCN	LSR	NET
-1	Nazgul 6-1		Striver		1161	1Y	1561	
-2	Nazgul 6-2		Razorback		1162	64Y	1562	

LOADOUT

A/A	2xA120C, 2xA9M				GUN	100% SAPHEI
A/G					CHF	120
POD	TGT, NAV				FLR	60
TKS					FUEL	100%

TOLD

	Takeoff	Target	Joker	Bingo	Land
FUEL	22588				

AIRBASES

	Name	TCN	ATIS	GND	TWR	RWY	Elev	ILS
Dep	Rovaniemi	14X	282.8	282.5	250.55	21	643	111.7
Arr	Rovaniemi	14X	282.8	282.5	250.55	21	643	111.7

FLIGHTPLAN

#	Name	Navaid/Coords/DME	ALT	TOT
1	ARFUT	N66 18.988 E026 21.957	5000	
2	REIVI	N66 04.567 E025 31.900		
3	MARXO	N66 36.283 E026 44.933	2500	
4	NIPAK	N66 42.350 E026 06.083	2500	
5	PERUN	N66 44.135 E026 01.630		
6	PERUN	N66 44.135 E026 01.630		
7	PERUN	N66 44.135 E026 01.630		
8	PERUN	N66 44.135 E026 01.630		
9	PERUN	N66 44.135 E026 01.630		
10	PERUN	N66 44.135 E026 01.630		

SUPPORT**AWACS**

Callsign

Freq

ALT

Pos

HEIMDALL

348.7

OTHER FLIGHTS

Callsign	Mission	Airframe	Freq	TCN	Grpld	Laser
Rattler 6	Training	4x AH-64D	133.5	1/64		125X
AO	R92B	Task	Coop-Attack			
Raptor 2	Training	2x F-16C	134.2	1/64		171X
AO	South Rovaniemi	Task	Night VFR			
Raptor 3	Training	2x F-16C	134.3	1/64		171X
AO	South Rovaniemi	Task	Night VFR			
Raptor 4	Training	2x F-16C	134.4	1/64		171X
AO	South Rovaniemi	Task	Night VFR			
Panther 7	Training	2x F/A-18C	261.35	1/64		157X
AO	ESR01 SAM Range	Task	SAM Tests SA-2 / SA-3			

RADIO CHANNELS

#	Freq	Name
1		Flight/Squadron specific
2	282.8	Rovaniemi ATIS
3	282.5	Rovaniemi Ground
4	250.55	Rovaniemi Tower
5	320.7	Bodo ATIS
6	250.75	Bodo Tower
7	235.45	Kallax ATIS
8	250.3	Kallax Tower
9	265.0	Texaco-1 KC-135 Medium / Slow 71Y
10	319.8	Arco-1 KC-135 High / Fast 22Y
11	360.8	Shell-1 KC-135 MPRS High / Fast 41Y
12	304.0	CVN-71 Rough Rider (RRR) 71X
13	303.0	LHA-1 Tarawa (TWA) 79X
14	247.8	S-3B Mauler-1 (MAU) 64Y
15	347.8	Loki (E-2D)
16	348.7	Heimdall (E-3A)
17	242.17	ESR02 - CAS Range Operator
18	34.7	ESR02 - JTAC Odin
19	270.5	Blue
20	270.75	Red

RAMROD

0	1	2	3	4	5	6	7	8	9
P	U	R	C	H	A	S	I	N	G

KTC 1400 C

	0	1	2	3	4	5	6	7	8	9
A	EIDM	KXW	VAU	RF	NB	TQY	GO	CJ	LS	HP
B	BJAS	NMQ	GPO	LU	VR	IYK	FT	XE	CH	WD
C	KLGU	IJN	SMX	CY	FR	QTE	AB	OD	VP	WH
D	CFON	HGK	UTV	WS	XQ	EYL	MD	AI	JR	BP
E	ROFP	UXN	TCV	JE	KM	HIQ	YW	BG	DA	LS
F	KQVE	NFH	LMW	OP	SG	BUR	IA	DX	TY	CJ
G	PJDQ	EVY	OHG	LN	SK	BMU	IR	AX	FC	WT
H	YVCD	BEI	XHN	TU	PL	FAS	QR	KW	JG	MO
I	SWYI	VAX	DRJ	QO	TM	UCF	HB	EG	LP	KN
J	TEHW	XUM	OKR	CG	SL	VID	BA	QP	NF	YJ
K	YTDF	NAM	CBR	HK	PI	UEL	VX	SO	WJ	GQ
L	AOYR	SGW	FTJ	CI	ME	XUP	BN	QL	HK	DV
M	YJOR	XMW	UVA	PE	GQ	BNK	IT	CL	FD	HS
N	SEJB	FVR	INC	KL	XM	DPG	UT	OQ	YH	AW
O	KSYF	GXD	ECT	LP	OM	JRW	QU	AV	HN	IB
P	FRHN	LKE	AOC	BT	UM	IYJ	SD	XP	WQ	GV
Q	YBWJ	SPT	ELA	GX	KF	OVR	IH	QC	MU	ND
R	SJPQ	BXF	CIO	HR	WD	LGV	EK	MT	AU	NY
S	JLWC	NGB	FSU	RM	TQ	IVK	ED	YO	AX	HP
T	ERUV	JKB	LON	XG	WD	QIA	CS	MY	HT	PF
U	CUVK	AFX	RES	MN	TI	WJQ	GP	DL	YH	OB
V	VXYB	RNA	DQG	HE	IP	CUT	LO	SF	KW	MJ
W	SPQR	ILM	TUC	XN	HW	YOV	FG	JB	ED	KA
X	QEUP	SGW	MTD	HV	AC	ROX	KN	IF	YJ	BL
Y	TDJU	BXP	AIH	QR	VC	EKN	WL	MG	SO	YF

NAVAIDS

Id	Name	Channel	Position	Elevation
BOO	Bodo	45	N67 15.838 E014 20.046	43
BNK	Banak	47	N70 03.937 E024 58.181	17
OYA	Andoya	28	N69 17.175 E016 08.658	19

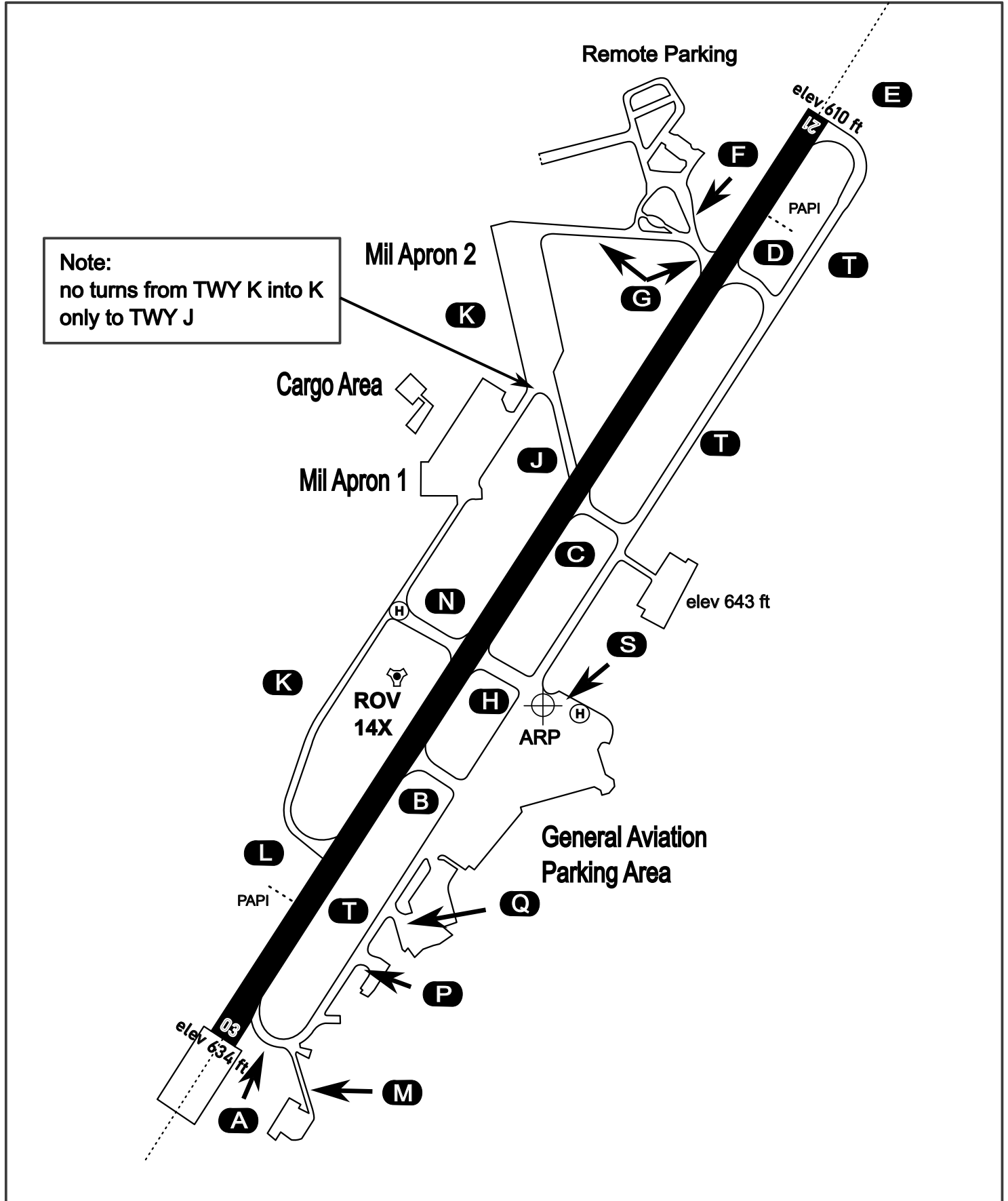
AERODROME CHART

Rovaniemi Aerodrome

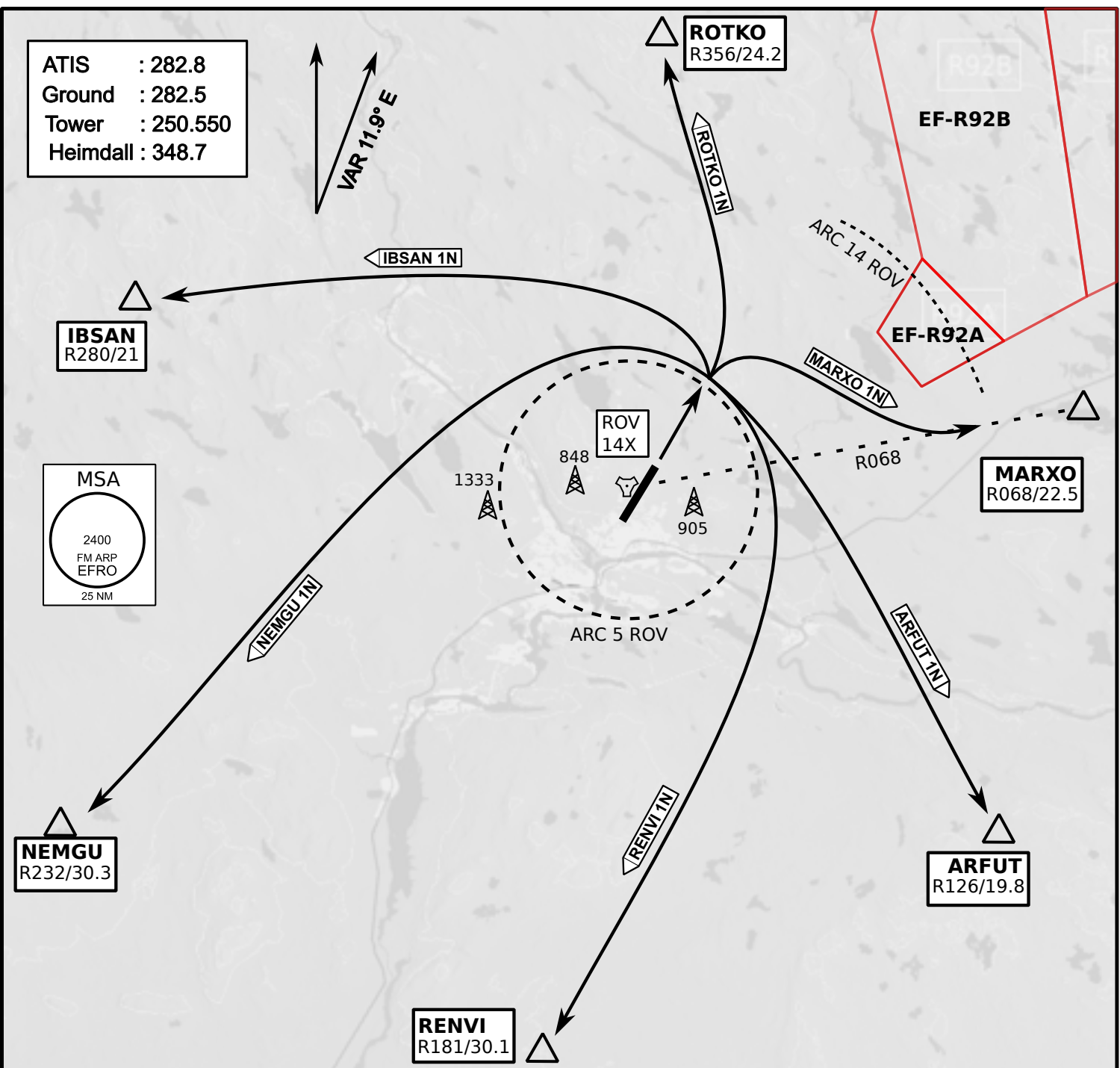
ARP N66° 33' 42" E025° 49' 51"

elev 643 ft

ROVANIEMI, FINLAND



ATIS	Ground	Tower	Radar
282.800	282.500	250.550	348.700



- Climb on Rwy heading to min A2000ft
- when passing A2000ft OR 5 DME ROV (whichever is later) turn to exit point
- Stay outside ARC 5 ROV
- if EF-R92B is active :
intercept R068 ROV inside 14 DME ROV to MARXO
- AB usage only if necessary for flight safety

