

**MISSION DATA CARD**

OPORD		Callsign		Mission		Date/Time		
3737/2025		Panther 7		Training		102025MAR25		
Task	SAM Tests SA-2 / SA-3					Freq		
AO	ESR01 SAM Range					261.35		
Departure				Recovery				
CAT				Tacan RWY 21				
#	Callsign		Pilot		IFF	TCN	LSR	NET
-1	Panther 7-1		Prinz		1271	1Y	1571	
-2	Panther 7-2		Hawk		1272	64Y	1572	

**LOADOUT**

A/A	2xA9X, A120C				GUN	100% HEI-T	
A/G	4xA88C				CHF	90	
POD	TGP				FLR	30	
TKS	FPU-8A				FUEL	100%	

**TOLD**

	Takeoff	Target	Joker	Bingo	Land
FUEL	13047			3500	

**AIRBASES**

	Name	TCN	ATIS	GND	TWR	RWY	Elev	ILS
Dep	CVN-71 USS Theodore Roosevelt	71X		ICLS 7	304.0			
Arr	Rovaniemi	14X	282.8	282.5	250.55	21	643	111.7
Div	Rovaniemi	14X	282.8	282.5	250.55	21	643	111.7

**FLIGHTPLAN**

#	Name	Navaid/Coords/DME	ALT	TOT
1	LIVLI	N67 16 E016 47.420	28000	
2	SEPJA	N67 27.300 E021 12.080	28000	
3	T.ESR01.SA2	N68 28.397 E021 21.225	0	
4	T.ESR01.SA3	N68 21.971 E021 20.001	0	
5	AR.SHELL1	N67 26.792 E024 34.717	28000	
6	IMARI	N66 28.406 E025 31.291	0	
7	INSAR	N66 38.850 E025 59.333	0	

**COMMS**

Radio	Usage
1	304.0 MTHR / 348.7 HMDLL / ROV 282.8 (ATIS) 250.55 (TWR) 282.5 (GND) /
2	SHL1 360.8
3	MIDS-A 23
4	MIDS-B 44

## NOTES

Broadcast: Bei mir geht DISCORD nicht. Keine Verbindung !

**SUPPORT****Tanker**

Callsign	TCN	Freq	ALT	TAS
SHELL 1	41Y	360.8		
Pos				

## OTHER FLIGHTS

Callsign	Mission	Airframe	Freq	TCN	Grpld	Laser
Rattler 6	Training	4x AH-64D	133.5	1/64		125X
AO	R92B	Task	Coop-Attack			
Raptor 2	Training	2x F-16C	134.2	1/64		171X
AO	South Rovaniemi	Task	Night VFR			
Raptor 3	Training	2x F-16C	134.3	1/64		171X
AO	South Rovaniemi	Task	Night VFR			
Raptor 4	Training	2x F-16C	134.4	1/64		171X
AO	South Rovaniemi	Task	Night VFR			
Nazgul 6	Training	4x F-15E	262.45	1/64		156X
AO		Task				

## RADIO CHANNELS

#	Freq	Name
1		Flight/Squadron specific
2	282.8	Rovaniemi ATIS
3	282.5	Rovaniemi Ground
4	250.55	Rovaniemi Tower
5	320.7	Bodo ATIS
6	250.75	Bodo Tower
7	235.45	Kallax ATIS
8	250.3	Kallax Tower
9	265.0	Texaco-1   KC-135   Medium / Slow   71Y
10	319.8	Arco-1   KC-135   High / Fast   22Y
11	360.8	Shell-1   KC-135 MPRS   High / Fast   41Y
12	304.0	CVN-71 Rough Rider (RRR)   71X
13	303.0	LHA-1 Tarawa (TWA)   79X
14	247.8	S-3B Mauler-1 (MAU)  64Y
15	347.8	Loki (E-2D)
16	348.7	Heimdall (E-3A)
17	242.17	ESR02 - CAS Range Operator
18	34.7	ESR02 - JTAC Odin
19	270.5	Blue
20	270.75	Red

**RAMROD**

0	1	2	3	4	5	6	7	8	9
P	U	R	C	H	A	S	I	N	G

**KTC 1400 C**

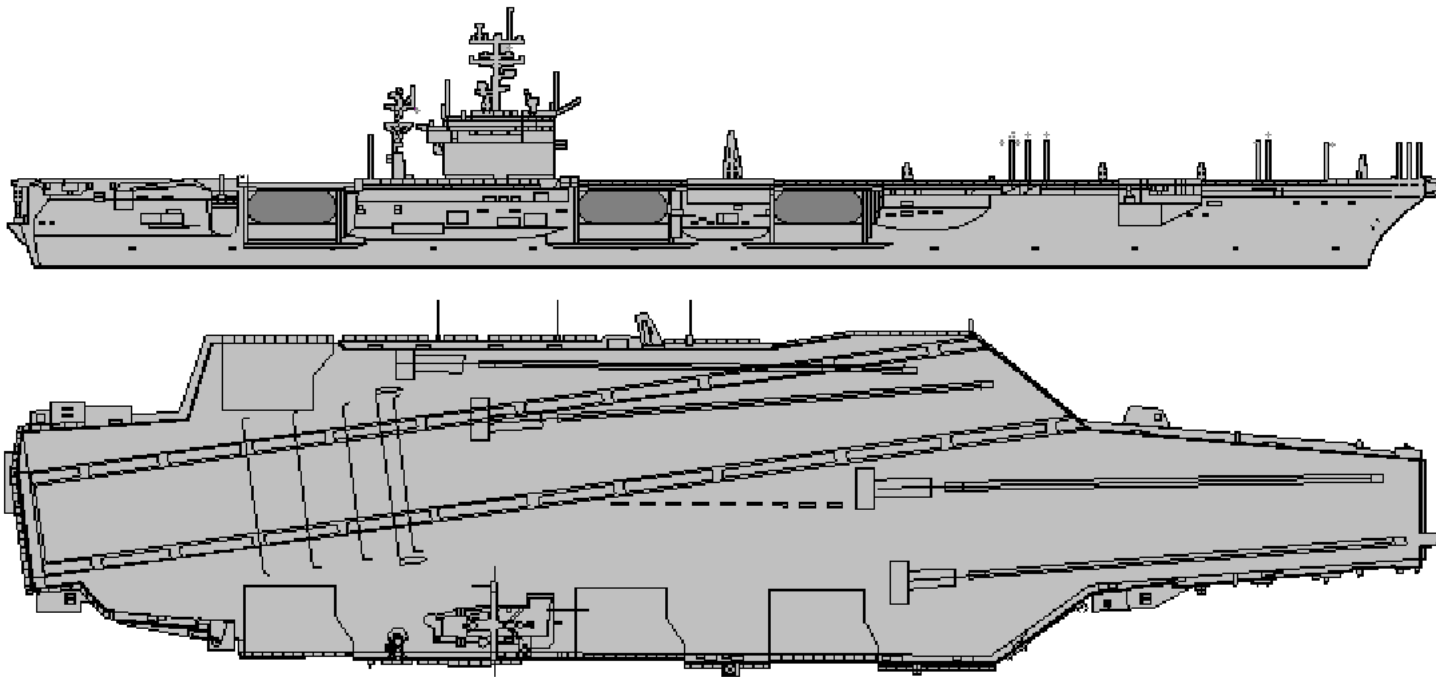
	0	1	2	3	4	5	6	7	8	9
A	EIDM	KXW	VAU	RF	NB	TQY	GO	CJ	LS	HP
B	BJAS	NMQ	GPO	LU	VR	IYK	FT	XE	CH	WD
C	KLGU	IJN	SMX	CY	FR	QTE	AB	OD	VP	WH
D	CFON	HGK	UTV	WS	XQ	EYL	MD	AI	JR	BP
E	ROFP	UXN	TCV	JE	KM	HIQ	YW	BG	DA	LS
F	KQVE	NFH	LMW	OP	SG	BUR	IA	DX	TY	CJ
G	PJDQ	EVY	OHG	LN	SK	BMU	IR	AX	FC	WT
H	YVCD	BEI	XHN	TU	PL	FAS	QR	KW	JG	MO
I	SWYI	VAX	DRJ	QO	TM	UCF	HB	EG	LP	KN
J	TEHW	XUM	OKR	CG	SL	VID	BA	QP	NF	YJ
K	YTDF	NAM	CBR	HK	PI	UEL	VX	SO	WJ	GQ
L	AOYR	SGW	FTJ	CI	ME	XUP	BN	QL	HK	DV
M	YJOR	XMW	UVA	PE	GQ	BNK	IT	CL	FD	HS
N	SEJB	FVR	INC	KL	XM	DPG	UT	OQ	YH	AW
O	KSYF	GXD	ECT	LP	OM	JRW	QU	AV	HN	IB
P	FRHN	LKE	AOC	BT	UM	IYJ	SD	XP	WQ	GV
Q	YBWJ	SPT	ELA	GX	KF	OVR	IH	QC	MU	ND
R	SJPQ	BXF	CIO	HR	WD	LGV	EK	MT	AU	NY
S	JLWC	NGB	FSU	RM	TQ	IVK	ED	YO	AX	HP
T	ERUV	JKB	LON	XG	WD	QIA	CS	MY	HT	PF
U	CUVK	AFX	RES	MN	TI	WJQ	GP	DL	YH	OB
V	VXYB	RNA	DQG	HE	IP	CUT	LO	SF	KW	MJ
W	SPQR	ILM	TUC	XN	HW	YOV	FG	JB	ED	KA
X	QEUP	SGW	MTD	HV	AC	ROX	KN	IF	YJ	BL
Y	TDJU	BXP	AIH	QR	VC	EKN	WL	MG	SO	YF

**NAVAIDS**

Id	Name	Channel	Position	Elevation
BOO	Bodo	45	N67 15.838 E014 20.046	43
BNK	Banak	47	N70 03.937 E024 58.181	17
OYA	Andoya	28	N69 17.175 E016 08.658	19



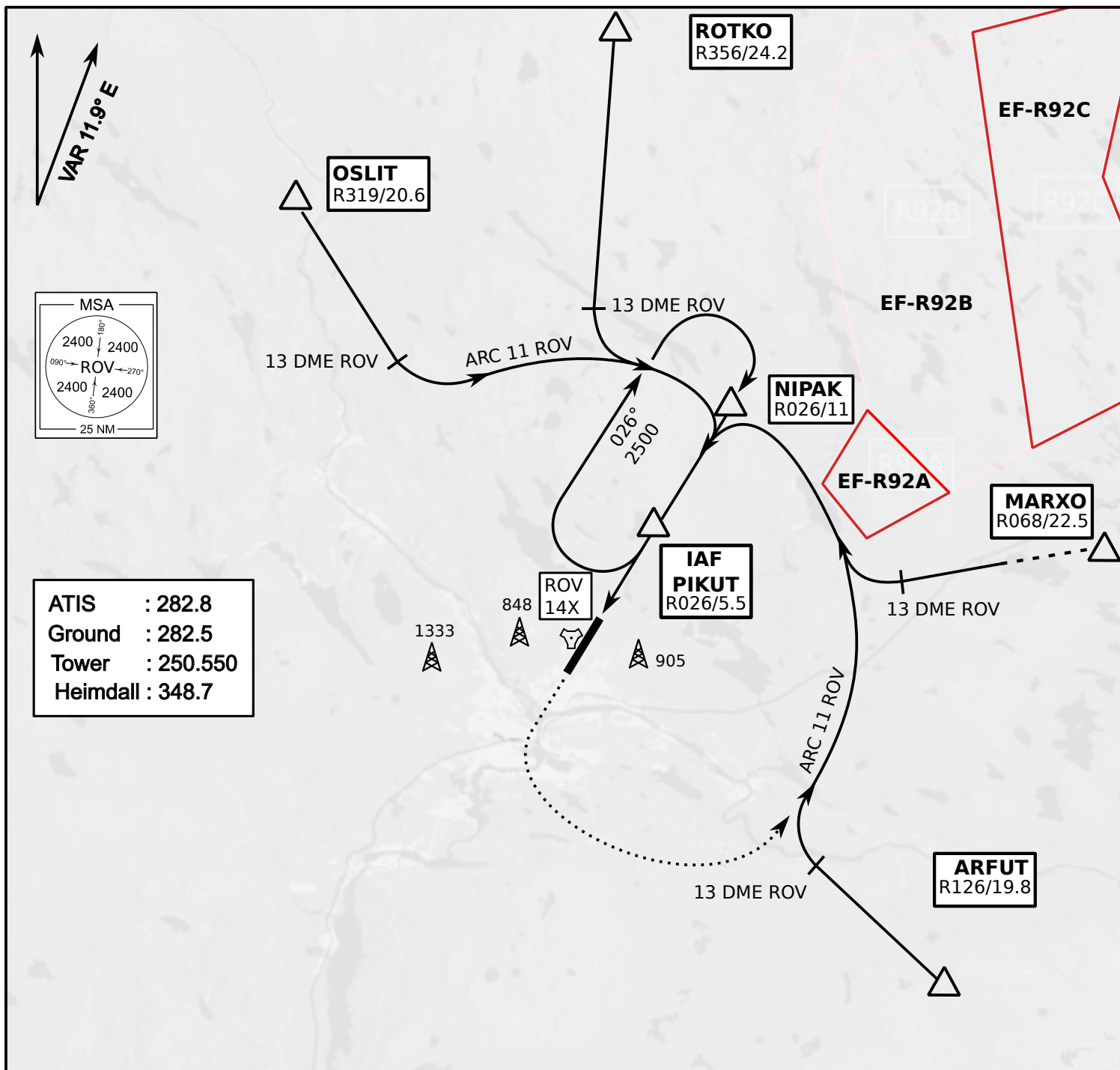




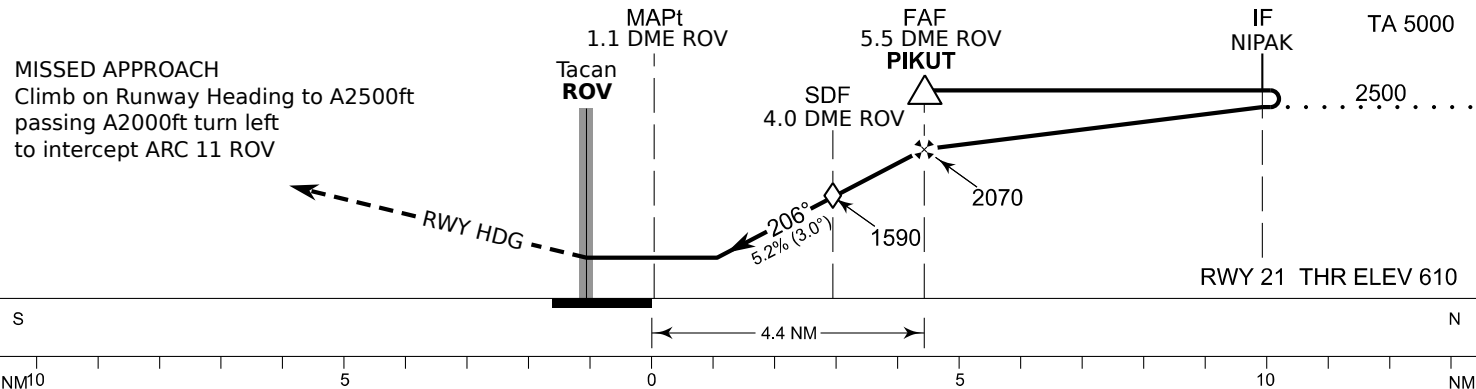
**INSTRUMENT  
APPROACH CHART**

ELEV 643ft  
HEIGHTS RELATED TO  
THR RWY21 ELEV 610ft

Tacan RWY 21  
ROVANIEMI AERODROME  
ROVANIEMI, FINLAND



**ATIS : 282.8**  
**Ground : 282.5**  
**Tower : 250.550**  
**Heimdall : 348.7**



OCA (H)	A	B	C	D
Tacan	1010 (400)			
Tacan WO SDF	1590 (980)			
Circling	1120 (470)	1150 (510)	1300 (660)	1340 (690)

Final Approach DIST	3.0 DME	4.0 DME	5.0 DME			
Altitude (Height)	1280 (670)	1590 (980)	1910 (1300)			
	kt	90	100	120	140	160
FAF - MAPt 4.4 NM	min:sec	2:56	2:38	2:12	1:53	1:39
Rate of descent	ft/min	480	530	640	740	850

Timing not authorized for defining the MAPt

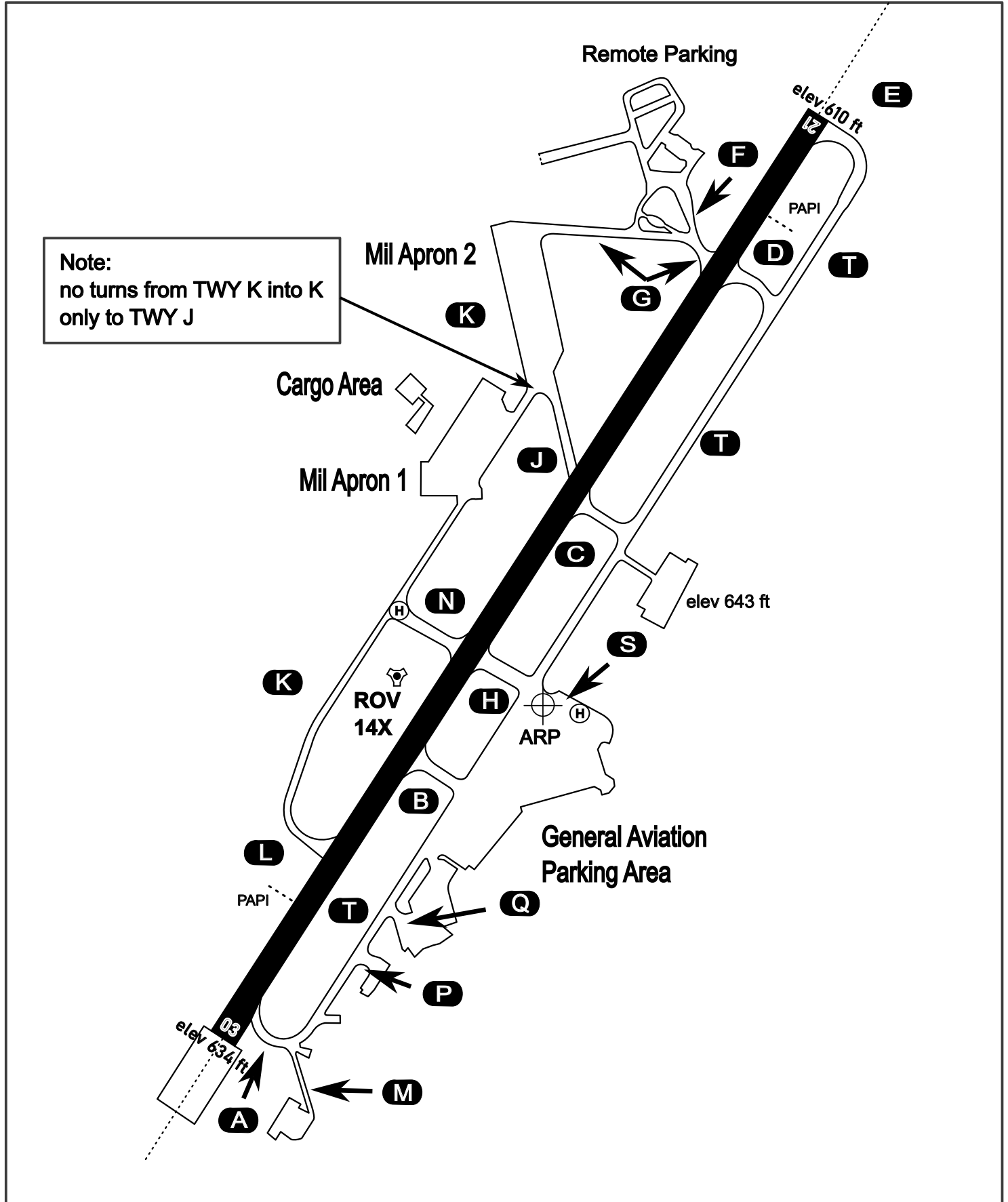
# AERODROME CHART

Rovaniemi Aerodrome

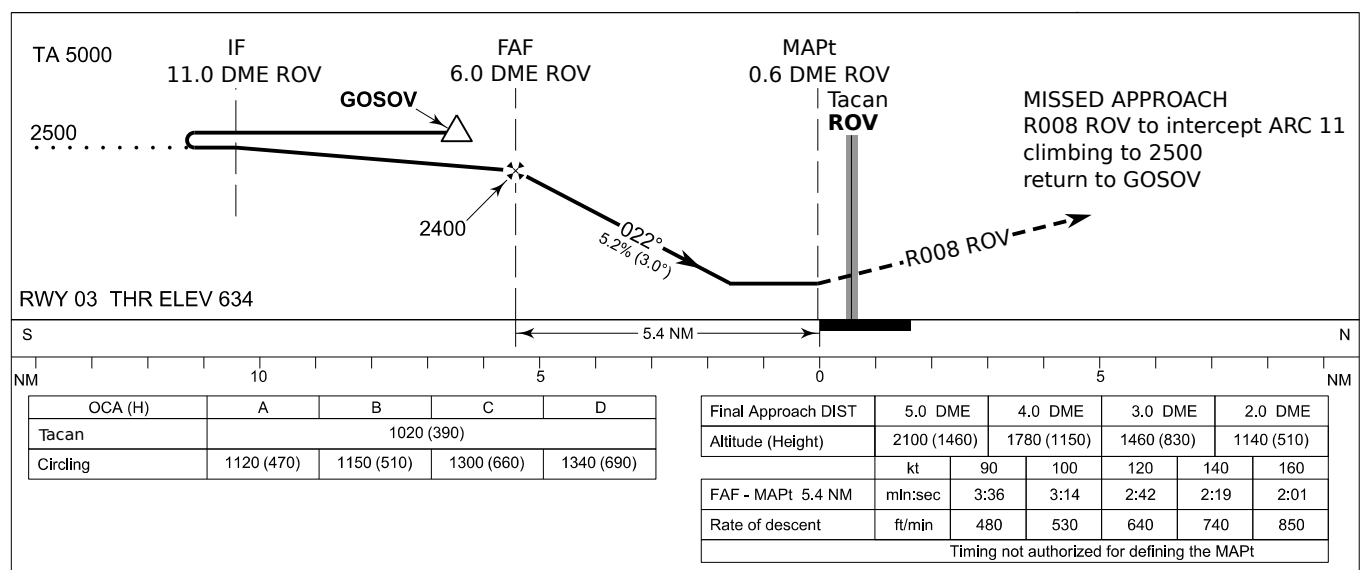
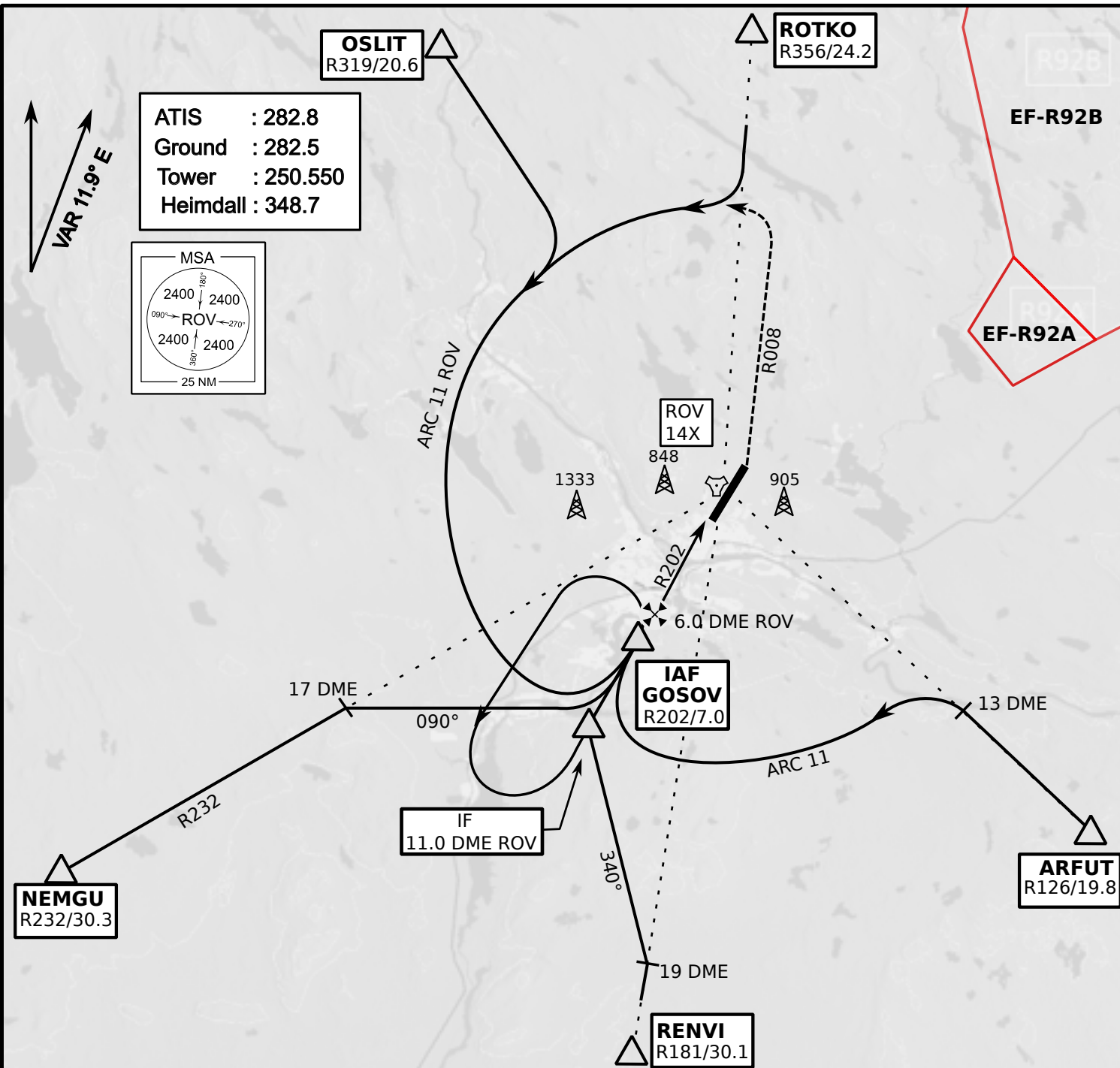
ARP N66° 33' 42" E025° 49' 51"

elev 643 ft

## ROVANIEMI, FINLAND



ATIS	Ground	Tower	Radar
282.800	282.500	250.550	348.700



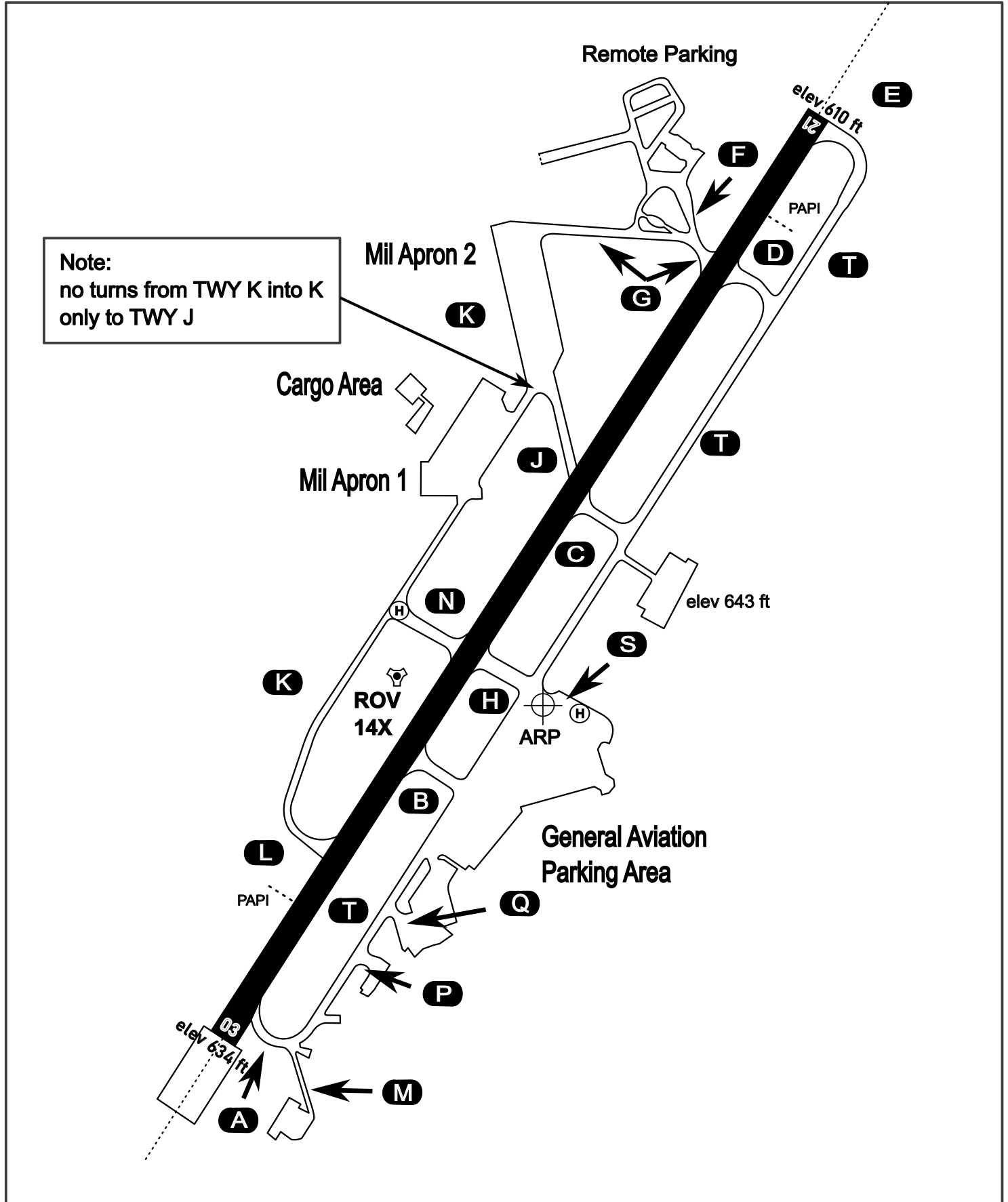
# AERODROME CHART

Rovaniemi Aerodrome

ARP N66° 33' 42" E025° 49' 51"

elev 643 ft

## ROVANIEMI, FINLAND



ATIS	Ground	Tower	Radar
282.800	282.500	250.550	348.700