

MISSION DATA CARD

OPORD		Callsign		Mission		Date/Time		
3735/2025		Raptor 3		Training		102000MAR25		
Task	Night VFR					Freq		
AO	South Rovaniemi					134.3		
Departure				Recovery				
VFR Departure				VFR Approach				
#	Callsign		Pilot		IFF	TCN	LSR	NET
-1	Raptor 3-1		Snowbird		1631	1Y	1711	
-2	Raptor 3-2		Jinx		1632	64Y	1712	

LOADOUT

A/A	2xA120C, 2xA9X				GUN	100% HEI-T	
A/G					CHF	60	
POD					FLR	60	
TKS	FT300				FUEL	100%	

TOLD

	Takeoff	Target	Joker	Bingo	Land
FUEL	9166				

AIRBASES

	Name	TCN	ATIS	GND	TWR	RWY	Elev	ILS
Dep	Rovaniemi	14X	282.8	282.5	250.55	21	643	111.7
Arr	Rovaniemi	14X	282.8	282.5	250.55	21	643	111.7
Div	Kemi Tornio	106X			250.3	36	62	110.9

FLIGHTPLAN

#	Name	Navaid/Coords/DME	ALT	TOT
1	PERUN	N66 44 08.120 E026 01 37.812	3000	
2	VIKA	N66 37 28.469 E026 13 33.460	3000	
3	SIERRA	N66 25 42.681 E025 46 36.642	3000	
4	IMARI	N66 28 24.377 E025 31 17.480	3000	
5	NEMGU	N66 20 24.029 E024 41 39.025	3000	
6	Kemi Tornio	N65 46 53.344 E024 34 56.221	3000	
7	RENVİ	N66 04 33.600 E025 31 54.003	3000	
8	IBSAN	N66 42 30.019 E025 01 04.824	3000	
9	Rovaniemi	N66 33 53.445 E025 49 49.755	2000	

NOTES

Orbit Holding #5 NEMGU

R1 (A10) R2(A11) R3 (A12) R4(A13)

TOT #6 Kemi Tornio

R1 (FAH 190) R2 (FAH 180) R3 (FAH 170) R4 (FAH 160)

FLUSH FLARE on PASS on TIME

OTHER FLIGHTS

Callsign	Mission	Airframe	Freq	TCN	Grpld	Laser
Rattler 6	Training	4x AH-64D	133.5	1/64		125X
AO	R92B	Task	Coop-Attack			
Raptor 2	Training	2x F-16C	134.2	1/64		171X
AO	South Rovaniemi	Task	Night VFR			
Raptor 4	Training	2x F-16C	134.4	1/64		171X
AO	South Rovaniemi	Task	Night VFR			
Panther 7	Training	2x F/A-18C	261.35	1/64		157X
AO	ESR01 SAM Range	Task	SAM Tests SA-2 / SA-3			
Nazgul 6	Training	4x F-15E	262.45	1/64		156X
AO		Task				

RADIO CHANNELS

#	Freq	Name
1		Flight/Squadron specific
2	282.8	Rovaniemi ATIS
3	282.5	Rovaniemi Ground
4	250.55	Rovaniemi Tower
5	320.7	Bodo ATIS
6	250.75	Bodo Tower
7	235.45	Kallax ATIS
8	250.3	Kallax Tower
9	265.0	Texaco-1 KC-135 Medium / Slow 71Y
10	319.8	Arco-1 KC-135 High / Fast 22Y
11	360.8	Shell-1 KC-135 MPRS High / Fast 41Y
12	304.0	CVN-71 Rough Rider (RRR) 71X
13	303.0	LHA-1 Tarawa (TWA) 79X
14	247.8	S-3B Mauler-1 (MAU) 64Y
15	347.8	Loki (E-2D)
16	348.7	Heimdall (E-3A)
17	242.17	ESR02 - CAS Range Operator
18	34.7	ESR02 - JTAC Odin
19	270.5	Blue
20	270.75	Red

RAMROD

0	1	2	3	4	5	6	7	8	9
P	U	R	C	H	A	S	I	N	G

KTC 1400 C

	0	1	2	3	4	5	6	7	8	9
A	EIDM	KXW	VAU	RF	NB	TQY	GO	CJ	LS	HP
B	BJAS	NMQ	GPO	LU	VR	IYK	FT	XE	CH	WD
C	KLGU	IJN	SMX	CY	FR	QTE	AB	OD	VP	WH
D	CFON	HGK	UTV	WS	XQ	EYL	MD	AI	JR	BP
E	ROFP	UXN	TCV	JE	KM	HIQ	YW	BG	DA	LS
F	KQVE	NFH	LMW	OP	SG	BUR	IA	DX	TY	CJ
G	PJDQ	EVY	OHG	LN	SK	BMU	IR	AX	FC	WT
H	YVCD	BEI	XHN	TU	PL	FAS	QR	KW	JG	MO
I	SWYI	VAX	DRJ	QO	TM	UCF	HB	EG	LP	KN
J	TEHW	XUM	OKR	CG	SL	VID	BA	QP	NF	YJ
K	YTFD	NAM	CBR	HK	PI	UEL	VX	SO	WJ	GQ
L	AOYR	SGW	FTJ	CI	ME	XUP	BN	QL	HK	DV
M	YJOR	XMW	UVA	PE	GQ	BNK	IT	CL	FD	HS
N	SEJB	FVR	INC	KL	XM	DPG	UT	OQ	YH	AW
O	KSYF	GXD	ECT	LP	OM	JRW	QU	AV	HN	IB
P	FRHN	LKE	AOC	BT	UM	IYJ	SD	XP	WQ	GV
Q	YBWJ	SPT	ELA	GX	KF	OVR	IH	QC	MU	ND
R	SJPQ	BXF	CIO	HR	WD	LGV	EK	MT	AU	NY
S	JLWC	NGB	FSU	RM	TQ	IVK	ED	YO	AX	HP
T	ERUV	JKB	LON	XG	WD	QIA	CS	MY	HT	PF
U	CUVK	AFX	RES	MN	TI	WJQ	GP	DL	YH	OB
V	VXYB	RNA	DQG	HE	IP	CUT	LO	SF	KW	MJ
W	SPQR	ILM	TUC	XN	HW	YOV	FG	JB	ED	KA
X	QEUP	SGW	MTD	HV	AC	ROX	KN	IF	YJ	BL
Y	TDJU	BXP	AIH	QR	VC	EKN	WL	MG	SO	YF

NAVAIDS

Id	Name	Channel	Position	Elevation
BOO	Bodo	45	N67 15.838 E014 20.046	43
BNK	Banak	47	N70 03.937 E024 58.181	17
OYA	Andoya	28	N69 17.175 E016 08.658	19

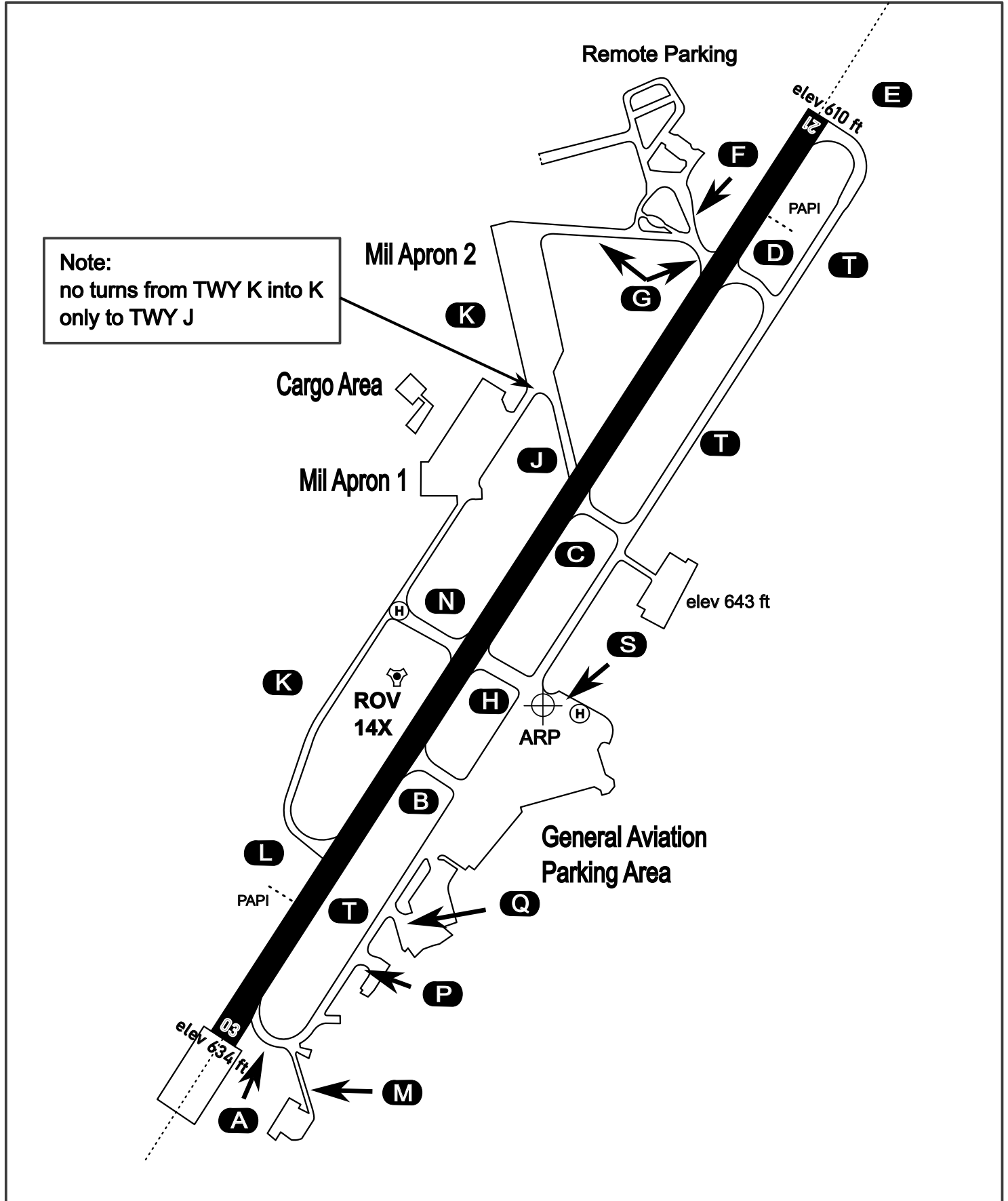
AERODROME CHART

Rovaniemi Aerodrome

ARP N66° 33' 42" E025° 49' 51"

elev 643 ft

ROVANIEMI, FINLAND

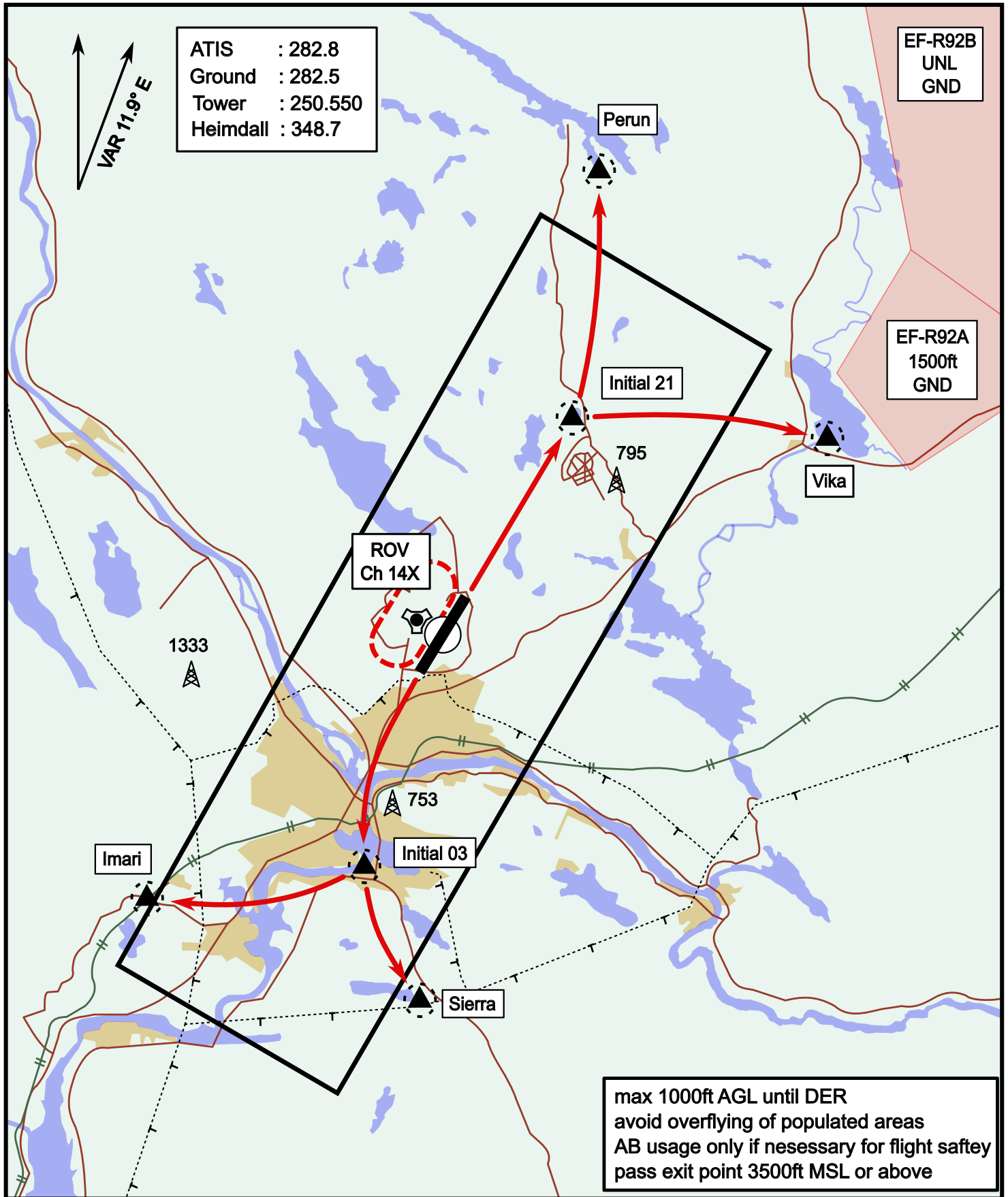


ATIS	Ground	Tower	Radar
282.800	282.500	250.550	348.700

Visual Departure Jet

elev 643 ft

Rovaniemi, Finland

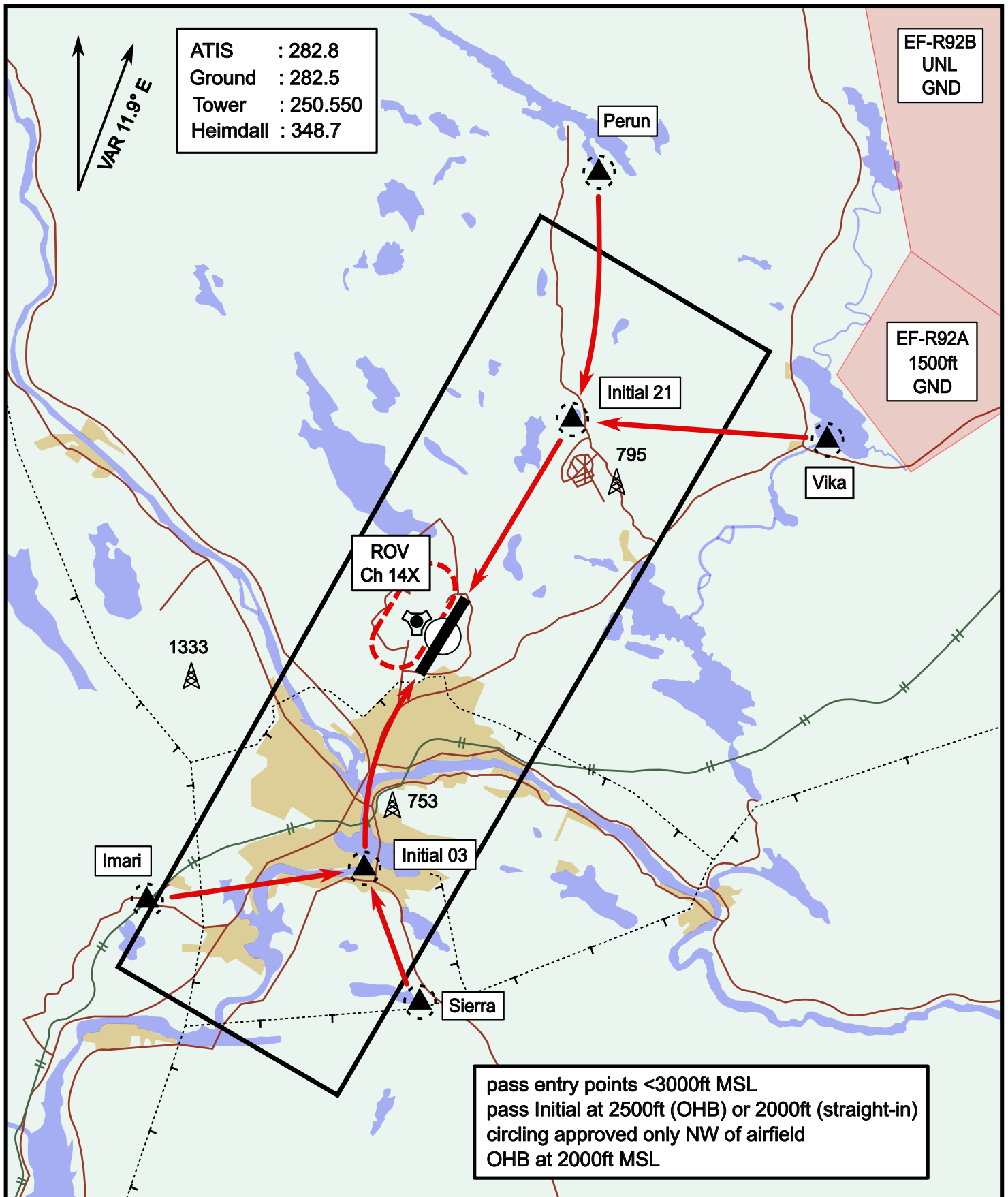


Vika	N66° 37.474 / E026° 13.557	Sierra	N66° 25.711 / E025° 46.610
Perun	N66° 44.135 / E026° 01.630	Imari	N66° 28.406 / E025° 31.291
Initial21	N66° 38.421 / E025° 58.682	Initial03	N66° 28.793 / E025° 44.105

Visual Approach Jet

elev 643 ft

Rovaniemi, Finland



Vika	N66° 37.474 / E026° 13.557	Sierra	N66° 25.711 / E025° 46.610
Perun	N66° 44.135 / E026° 01.630	Imari	N66° 28.406 / E025° 31.291
Initial21	N66° 38.421 / E025° 58.682	Initial03	N66° 28.793 / E025° 44.105

NOT AVAILABLE

NOT AVAILABLE