

MISSION DATA CARD

| | | | | | | | | |
|---------------|-----------------|----------|----------|--------------|------|-------------|------|-----|
| OPORD | | Callsign | | Mission | | Date/Time | | |
| 3734/2025 | | Raptor 2 | | Training | | 102000MAR25 | | |
| Task | Night VFR | | | | | Freq | | |
| AO | South Rovaniemi | | | | | 134.2 | | |
| Departure | | | | Recovery | | | | |
| VFR Departure | | | | VFR Approach | | | | |
| # | Callsign | | Pilot | | IFF | TCN | LSR | NET |
| -1 | Raptor 2-1 | | Hercules | | 1621 | 1Y | 1711 | |
| -2 | Raptor 2-2 | | Woodman | | 1622 | 64Y | 1712 | |

LOADOUT

| | | | | | | | |
|-----|----------------|--|--|--|------|------------|--|
| A/A | 2xA120C, 2xA9X | | | | GUN | 100% HEI-T | |
| A/G | | | | | CHF | 60 | |
| POD | | | | | FLR | 60 | |
| TKS | FT300 | | | | FUEL | 100% | |

TOLD

| | | | | | |
|------|---------|--------|-------|-------|------|
| | Takeoff | Target | Joker | Bingo | Land |
| FUEL | 9166 | | | | |

AIRBASES

| | | | | | | | | |
|-----|-------------|------|-------|-------|--------|-----|------|-------|
| | Name | TCN | ATIS | GND | TWR | RWY | Elev | ILS |
| Dep | Rovaniemi | 14X | 282.8 | 282.5 | 250.55 | 21 | 643 | 111.7 |
| Arr | Rovaniemi | 14X | 282.8 | 282.5 | 250.55 | 21 | 643 | 111.7 |
| Div | Kemi Tornio | 106X | | | 250.3 | 36 | 62 | 110.9 |

FLIGHTPLAN

| # | Name | Navaid/Coords/DME | ALT | TOT |
|---|-------------|------------------------------|------|-----|
| 1 | PERUN | N66 44 08.120 E026 01 37.812 | 3000 | |
| 2 | VIKA | N66 37 28.469 E026 13 33.460 | 3000 | |
| 3 | SIERRA | N66 25 42.681 E025 46 36.642 | 3000 | |
| 4 | IMARI | N66 28 24.377 E025 31 17.480 | 3000 | |
| 5 | NEMGU | N66 20 24.029 E024 41 39.025 | 3000 | |
| 6 | Kemi Tornio | N65 46 53.344 E024 34 56.221 | 3000 | |
| 7 | RENVİ | N66 04 33.600 E025 31 54.003 | 3000 | |
| 8 | IBSAN | N66 42 30.019 E025 01 04.824 | 3000 | |
| 9 | Rovaniemi | N66 33 53.445 E025 49 49.755 | 2000 | |

NOTES

Orbit Holding #5 NEMGU

R1 (A10) R2(A11) R3 (A12) R4(A13)

TOT #6 Kemi Tornio

R1 (FAH 190) R2 (FAH 180) R3 (FAH 170) R4 (FAH 160)

FLUSH FLARE on PASS on TIME

OTHER FLIGHTS

| Callsign | Mission | Airframe | Freq | TCN | Grpld | Laser |
|-----------|-----------------|------------|-----------------------|------|-------|-------|
| Rattler 6 | Training | 4x AH-64D | 133.5 | 1/64 | | 125X |
| AO | R92B | Task | Coop-Attack | | | |
| Raptor 3 | Training | 2x F-16C | 134.3 | 1/64 | | 171X |
| AO | South Rovaniemi | Task | Night VFR | | | |
| Raptor 4 | Training | 2x F-16C | 134.4 | 1/64 | | 171X |
| AO | South Rovaniemi | Task | Night VFR | | | |
| Panther 7 | Training | 2x F/A-18C | 261.35 | 1/64 | | 157X |
| AO | ESR01 SAM Range | Task | SAM Tests SA-2 / SA-3 | | | |
| Nazgul 6 | Training | 4x F-15E | 262.45 | 1/64 | | 156X |
| AO | | Task | | | | |

RADIO CHANNELS

| # | Freq | Name |
|----|--------|---|
| 1 | | Flight/Squadron specific |
| 2 | 282.8 | Rovaniemi ATIS |
| 3 | 282.5 | Rovaniemi Ground |
| 4 | 250.55 | Rovaniemi Tower |
| 5 | 320.7 | Bodo ATIS |
| 6 | 250.75 | Bodo Tower |
| 7 | 235.45 | Kallax ATIS |
| 8 | 250.3 | Kallax Tower |
| 9 | 265.0 | Texaco-1 KC-135 Medium / Slow 71Y |
| 10 | 319.8 | Arco-1 KC-135 High / Fast 22Y |
| 11 | 360.8 | Shell-1 KC-135 MPRS High / Fast 41Y |
| 12 | 304.0 | CVN-71 Rough Rider (RRR) 71X |
| 13 | 303.0 | LHA-1 Tarawa (TWA) 79X |
| 14 | 247.8 | S-3B Mauler-1 (MAU) 64Y |
| 15 | 347.8 | Loki (E-2D) |
| 16 | 348.7 | Heimdall (E-3A) |
| 17 | 242.17 | ESR02 - CAS Range Operator |
| 18 | 34.7 | ESR02 - JTAC Odin |
| 19 | 270.5 | Blue |
| 20 | 270.75 | Red |

RAMROD

| | | | | | | | | | |
|---|---|---|---|---|---|---|---|---|---|
| 0 | 1 | 2 | 3 | 4 | 5 | 6 | 7 | 8 | 9 |
| P | U | R | C | H | A | S | I | N | G |

KTC 1400 C

| | 0 | 1 | 2 | 3 | 4 | 5 | 6 | 7 | 8 | 9 |
|---|------|-----|-----|----|----|-----|----|----|----|----|
| A | EIDM | KXW | VAU | RF | NB | TQY | GO | CJ | LS | HP |
| B | BJAS | NMQ | GPO | LU | VR | IYK | FT | XE | CH | WD |
| C | KLGU | IJN | SMX | CY | FR | QTE | AB | OD | VP | WH |
| D | CFON | HGK | UTV | WS | XQ | EYL | MD | AI | JR | BP |
| E | ROFP | UXN | TCV | JE | KM | HIQ | YW | BG | DA | LS |
| F | KQVE | NFH | LMW | OP | SG | BUR | IA | DX | TY | CJ |
| G | PJDQ | EVY | OHG | LN | SK | BMU | IR | AX | FC | WT |
| H | YVCD | BEI | XHN | TU | PL | FAS | QR | KW | JG | MO |
| I | SWYI | VAX | DRJ | QO | TM | UCF | HB | EG | LP | KN |
| J | TEHW | XUM | OKR | CG | SL | VID | BA | QP | NF | YJ |
| K | YTFD | NAM | CBR | HK | PI | UEL | VX | SO | WJ | GQ |
| L | AOYR | SGW | FTJ | CI | ME | XUP | BN | QL | HK | DV |
| M | YJOR | XMW | UVA | PE | GQ | BNK | IT | CL | FD | HS |
| N | SEJB | FVR | INC | KL | XM | DPG | UT | OQ | YH | AW |
| O | KSYF | GXD | ECT | LP | OM | JRW | QU | AV | HN | IB |
| P | FRHN | LKE | AOC | BT | UM | IYJ | SD | XP | WQ | GV |
| Q | YBWJ | SPT | ELA | GX | KF | OVR | IH | QC | MU | ND |
| R | SJPQ | BXF | CIO | HR | WD | LGV | EK | MT | AU | NY |
| S | JLWC | NGB | FSU | RM | TQ | IVK | ED | YO | AX | HP |
| T | ERUV | JKB | LON | XG | WD | QIA | CS | MY | HT | PF |
| U | CUVK | AFX | RES | MN | TI | WJQ | GP | DL | YH | OB |
| V | VXYB | RNA | DQG | HE | IP | CUT | LO | SF | KW | MJ |
| W | SPQR | ILM | TUC | XN | HW | YOV | FG | JB | ED | KA |
| X | QEUP | SGW | MTD | HV | AC | ROX | KN | IF | YJ | BL |
| Y | TDJU | BXP | AIH | QR | VC | EKN | WL | MG | SO | YF |

NAVAIDS

| Id | Name | Channel | Position | Elevation |
|-----|--------|---------|------------------------|-----------|
| BOO | Bodo | 45 | N67 15.838 E014 20.046 | 43 |
| BNK | Banak | 47 | N70 03.937 E024 58.181 | 17 |
| OYA | Andoya | 28 | N69 17.175 E016 08.658 | 19 |

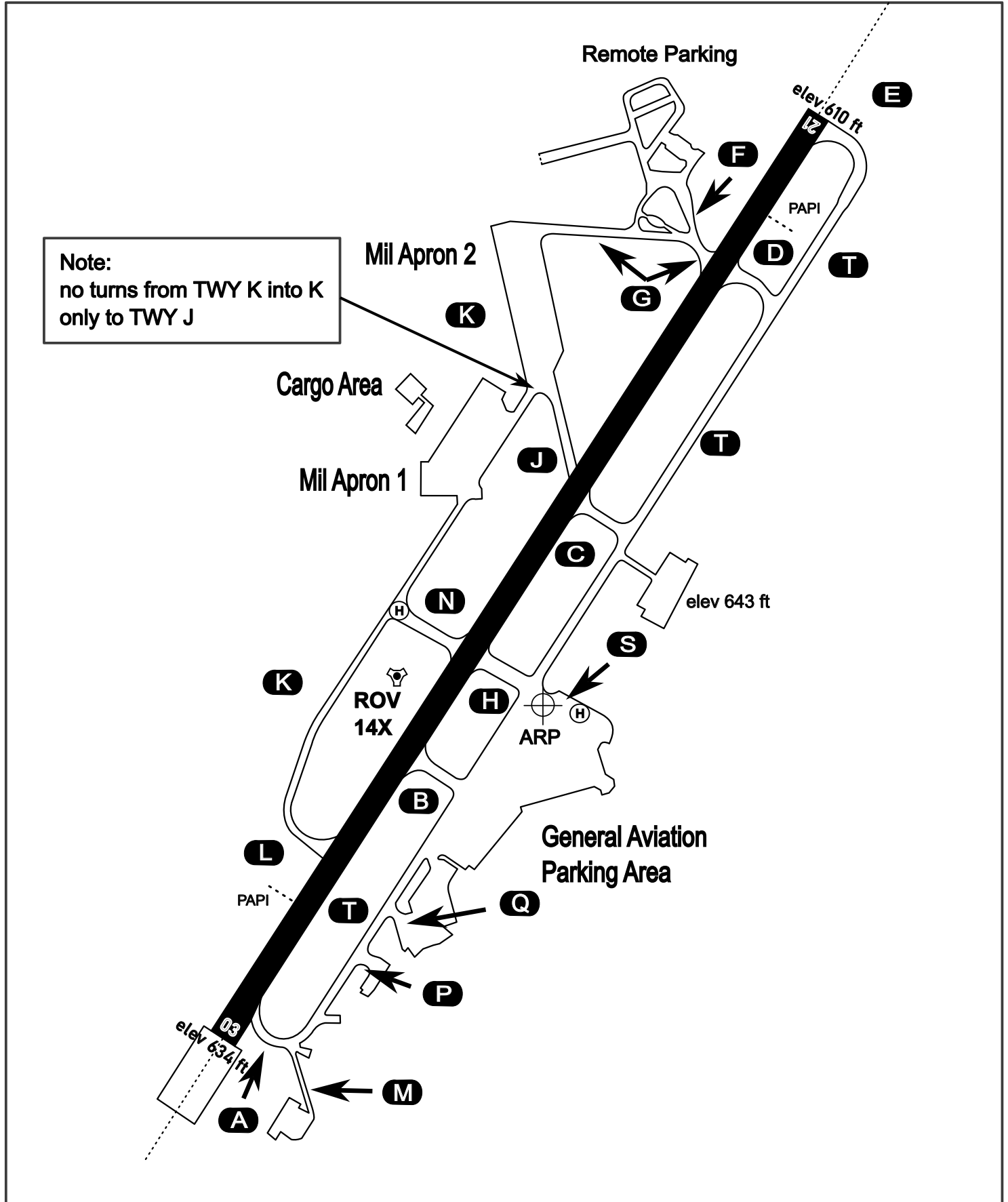
AERODROME CHART

Rovaniemi Aerodrome

ARP N66° 33' 42" E025° 49' 51"

elev 643 ft

ROVANIEMI, FINLAND

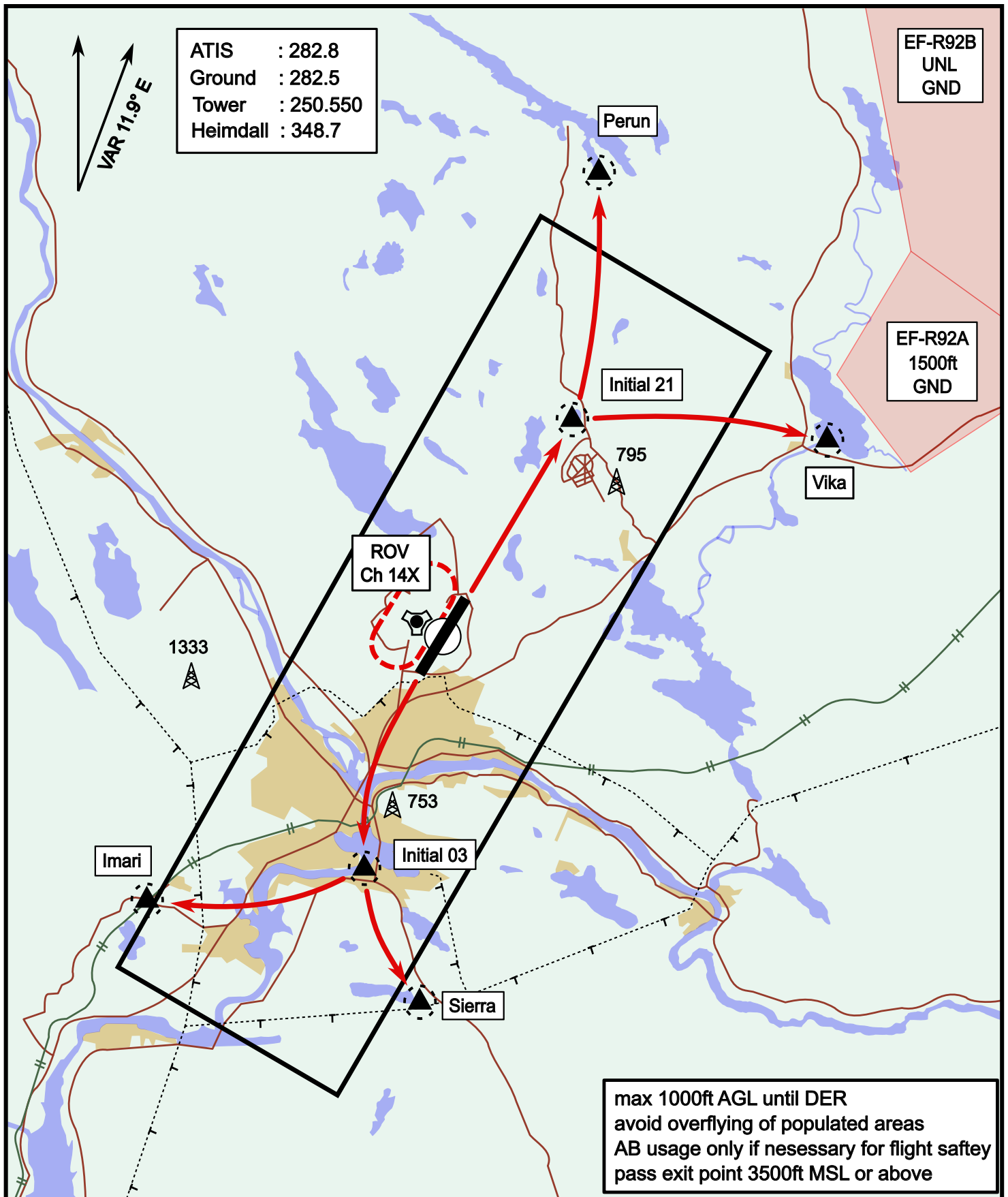


| ATIS | Ground | Tower | Radar |
|---------|---------|---------|---------|
| 282.800 | 282.500 | 250.550 | 348.700 |

Visual Departure Jet

elev 643 ft

Rovaniemi, Finland

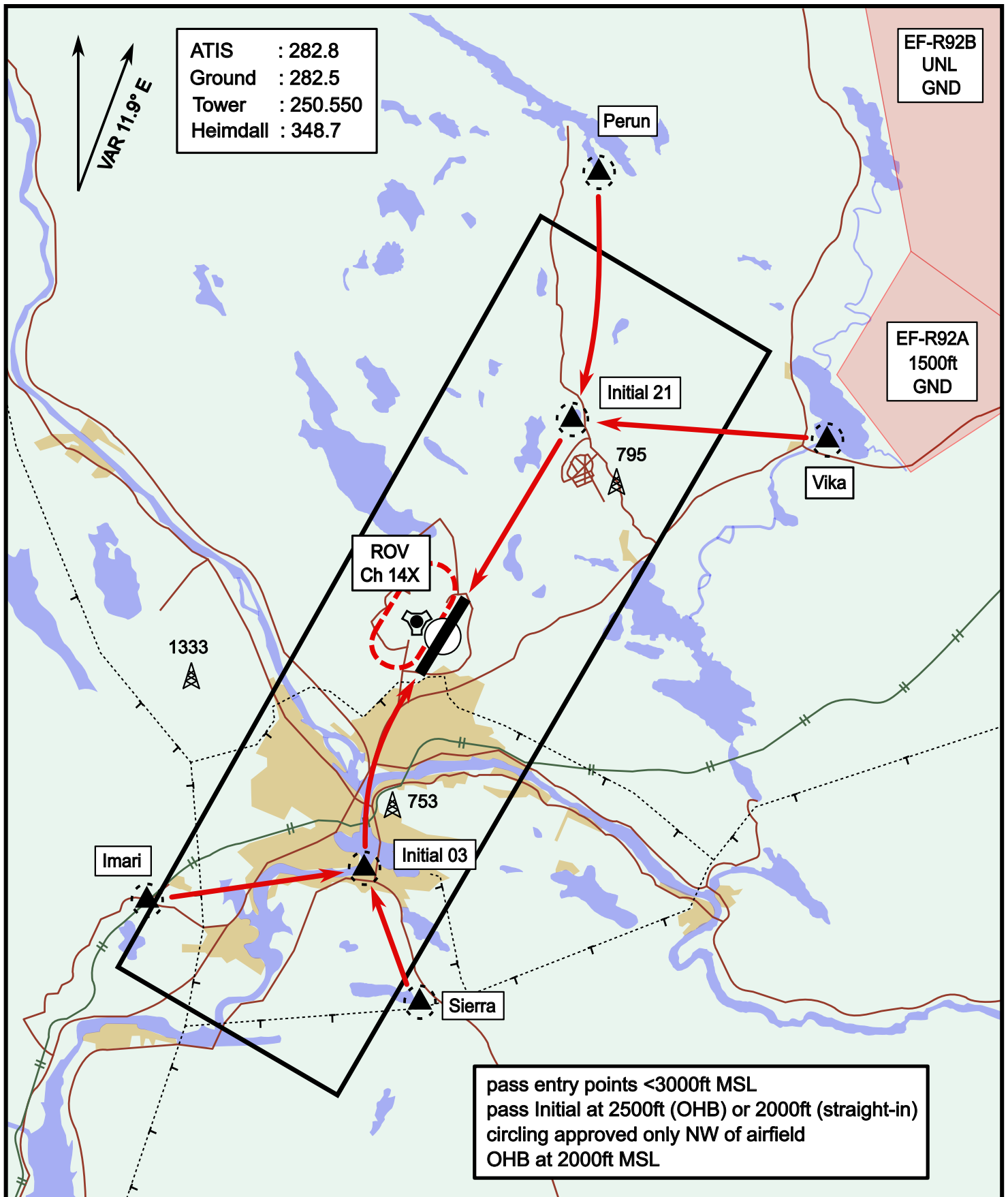


| | | | |
|-----------|----------------------------|-----------|----------------------------|
| Vika | N66° 37.474 / E026° 13.557 | Sierra | N66° 25.711 / E025° 46.610 |
| Perun | N66° 44.135 / E026° 01.630 | Imari | N66° 28.406 / E025° 31.291 |
| Initial21 | N66° 38.421 / E025° 58.682 | Initial03 | N66° 28.793 / E025° 44.105 |

Visual Approach Jet

elev 643 ft

Rovaniemi, Finland



| | | | |
|-----------|----------------------------|-----------|----------------------------|
| Vika | N66° 37.474 / E026° 13.557 | Sierra | N66° 25.711 / E025° 46.610 |
| Perun | N66° 44.135 / E026° 01.630 | Imari | N66° 28.406 / E025° 31.291 |
| Initial21 | N66° 38.421 / E025° 58.682 | Initial03 | N66° 28.793 / E025° 44.105 |

NOT AVAILABLE

NOT AVAILABLE