

**MISSION DATA CARD**

OPORD	Callsign	Mission	Date/Time			
3728/2025	Raptor 1	Training	091630MAR25			
Task	Tankering and Radar Training					Freq
AO						134.0
Departure			Recovery			
SID RWY 21			ILS RWY 21			
#	Callsign	Pilot	IFF	TCN	LSR	NET
-1	Raptor 1-1	Snowbird	1611	1Y	1621	

**LOADOUT**

A/A	C9M	GUN	100% TP PGU
A/G		CHF	0
POD	AT50	FLR	120
TKS	2xFT300	FUEL	100%

**TOLD**

	Takeoff	Target	Joker	Bingo	Land
FUEL	11169		4500	3500	

**AIRBASES**

	Name	TCN	ATIS	GND	TWR	RWY	Elev	ILS
Dep	Rovaniemi	14X	282.8	282.5	250.55	21	643	111.7
Arr	Rovaniemi	14X	282.8	282.5	250.55	21	643	111.7

**FLIGHTPLAN**

#	Name	Navaid/Coords/DME	ALT	TOT
1	EFRO Rovaniemi	N66 33.906 E025 49.858		
2	IBSAN	N66 42.500 E025 01.083	5000	
3	NAFFI	N67 04.630 E023 11.660	25000	
4	SEPJA	N67 27.300 E021 12.080	25000	
5	LURAP	N69 05.560 E018 15.890	25000	
6	ORTEN	N70 00.140 E014 59.450	2000	
7	LURAP	N69 05.560 E018 15.890	25000	
8	ENBO Bodo	N67 16.151 E014 21.905		
9	LIVLI	N67 16 E016 47.420	25000	
10	SEPJA	N67 27.300 E021 12.080	25000	
11	NAFFI	N67 04.630 E023 11.660	25000	
12	IBSAN	N66 42.500 E025 01.083	8000	

**SUPPORT****Tanker**

Callsign	TCN	Freq	ALT	TAS
TEXACO 1	71Y	265.0		
	Pos			
ARCO 1	22Y	319.8		
	Pos			

**AWACS**

Callsign	Freq	ALT	Pos
HEIMDALL	348.7		
LOKI	347.8		

## RADIO CHANNELS

#	Freq	Name
1		Flight/Squadron specific
2	282.8	Rovaniemi ATIS
3	282.5	Rovaniemi Ground
4	250.55	Rovaniemi Tower
5	320.7	Bodo ATIS
6	250.75	Bodo Tower
7	235.45	Kallax ATIS
8	250.3	Kallax Tower
9	265.0	Texaco-1   KC-135   Medium / Slow   71Y
10	319.8	Arco-1   KC-135   High / Fast   22Y
11	360.8	Shell-1   KC-135 MPRS   High / Fast   41Y
12	304.0	CVN-71 Rough Rider (RRR)   71X
13	303.0	LHA-1 Tarawa (TWA)   79X
14	247.8	S-3B Mauler-1 (MAU)  64Y
15	347.8	Loki (E-2D)
16	348.7	Heimdall (E-3A)
17	242.17	ESR02 - CAS Range Operator
18	34.7	ESR02 - JTAC Odin
19	270.5	Blue
20	270.75	Red

**RAMROD**

0	1	2	3	4	5	6	7	8	9
N	O	R	M	A	L	I	Z	E	S

**KTC 1400 C**

	0	1	2	3	4	5	6	7	8	9
A	ADQH	NCS	OEI	YG	KU	PWM	TV	BF	JX	LR
B	NROE	BAG	JQM	XF	ST	PHY	UI	KL	VW	CD
C	FNWJ	HUE	GDO	YB	AT	SCP	MQ	KV	RI	XL
D	RAXB	QGH	JLV	YP	UN	IDK	OF	SC	MT	EW
E	VGKO	JFD	AWC	HR	ET	PQU	XY	IS	MN	LB
F	JTBQ	RDV	MNX	LP	YH	WEA	UF	OS	GK	CI
G	VAYT	ESB	MIG	PX	HJ	KRQ	DU	NO	WC	LF
H	JHAI	VOK	YGX	UN	MD	QRL	ET	WS	PF	CB
I	THXG	IYR	QUK	AM	WC	JSV	PL	EN	BO	DF
J	HEJN	SYM	LKA	VU	WG	TRX	CP	IQ	OF	BD
K	ITXH	RGJ	FLM	BP	OC	KQD	SW	NV	EA	UY
L	JIMS	LBC	OPF	NX	DT	KAH	VW	GQ	EU	RY
M	OSPD	EGN	LJK	RW	QC	IMU	TH	AF	XY	VB
N	NXPL	YAQ	EBW	SC	UG	HDF	KO	IJ	TR	MV
O	CDEB	MJI	UYT	VF	AK	WHQ	GX	SP	RO	NL
P	YBQE	TNH	VXR	IO	UC	WLS	KA	JD	FG	MP
Q	UKVX	SAD	RHI	OW	YJ	MCN	EQ	LB	TG	PF
R	DWTH	CPV	NJX	KG	LS	BMR	FA	OY	EQ	UI
S	WCOT	XEB	SPQ	YK	RD	MGI	VF	HA	NL	JU
T	NRLG	CVQ	KYH	BP	TX	OSE	AJ	WI	MU	FD
U	GUXF	HRK	SIN	CM	PE	OAQ	WJ	VB	DL	TY
V	TELW	GJV	YQS	FR	IM	DCO	AK	BP	UH	XN
W	YKDF	UPS	TWR	GN	LB	OEV	MQ	AC	XI	HJ
X	BMOQ	TWF	RAL	KI	EN	UPC	GD	YV	JH	XS
Y	XFED	HCO	IKV	JA	GR	LWU	NT	BY	SP	QM

**NAVAIDS**

Id	Name	Channel	Position	Elevation
BOO	Bodo	45	N67 15.838 E014 20.046	43
BNK	Banak	47	N70 03.937 E024 58.181	17
OYA	Andoya	28	N69 17.175 E016 08.658	19

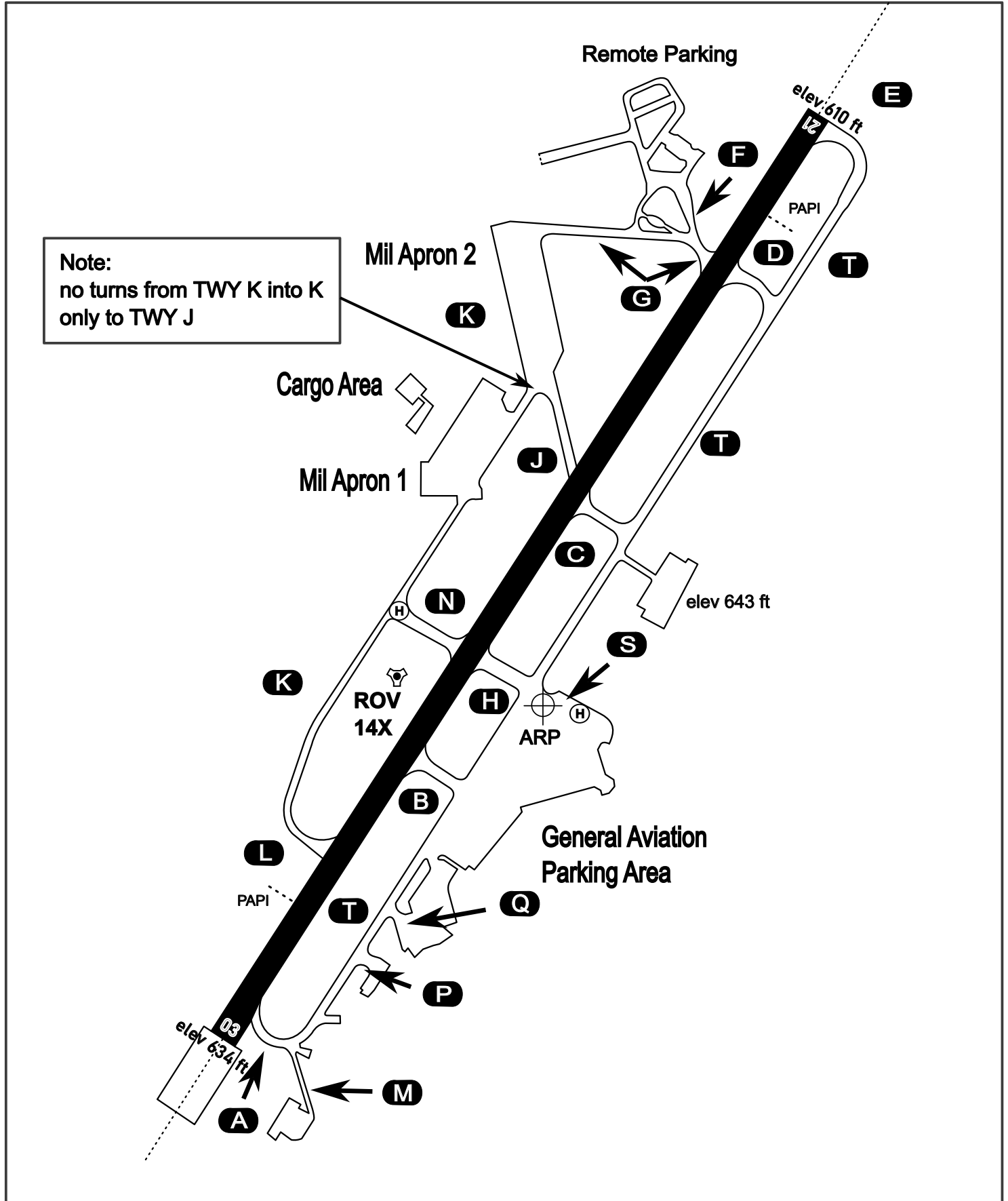
# AERODROME CHART

Rovaniemi Aerodrome

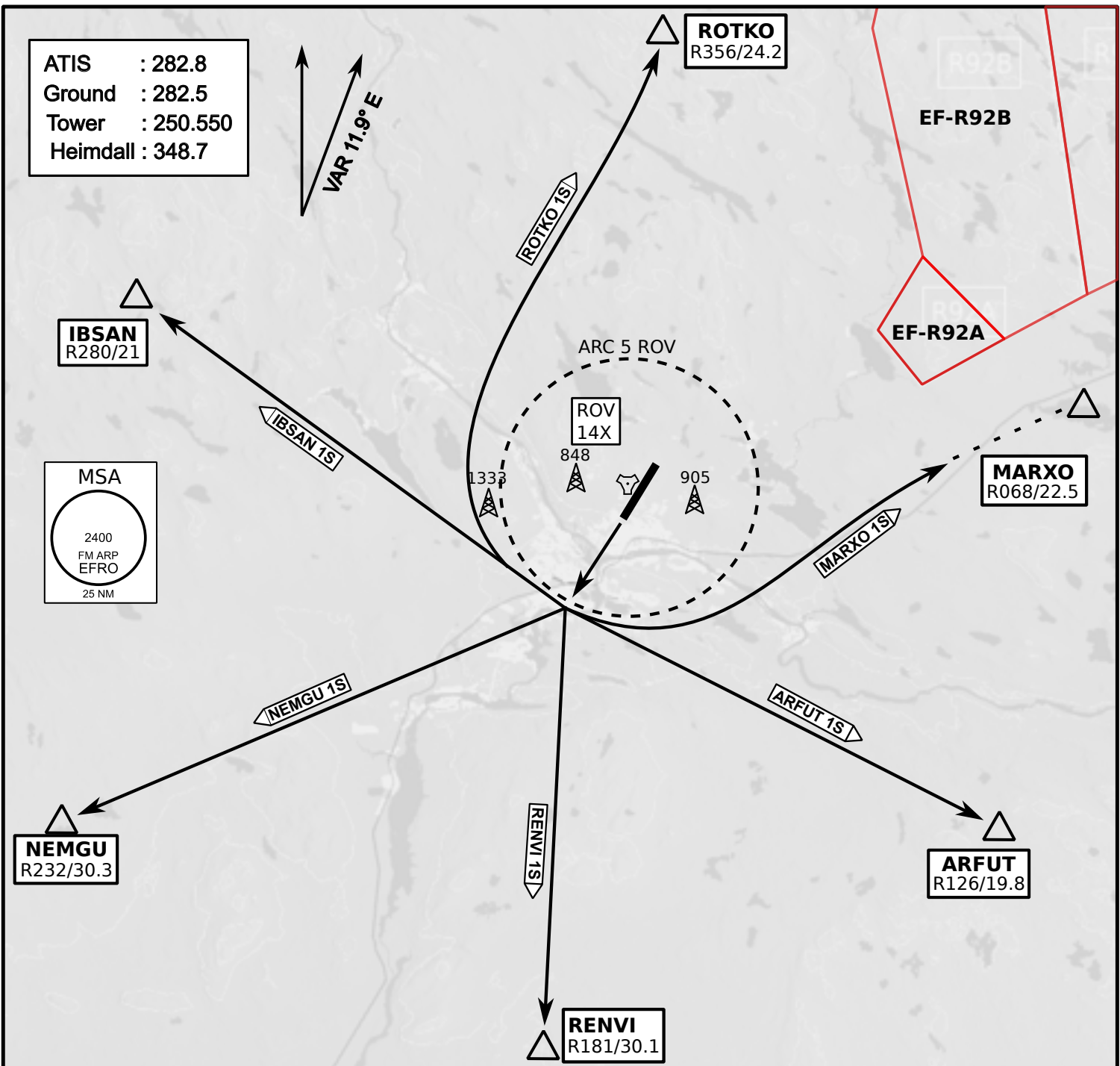
ARP N66° 33' 42" E025° 49' 51"

elev 643 ft

## ROVANIEMI, FINLAND



ATIS	Ground	Tower	Radar
282.800	282.500	250.550	348.700



- Climb on Rwy heading to min A2000ft
- when passing A2000ft OR 5 DME ROV (whichever is later) turn direct exit point
- Stay outside ARC 5 ROV
- AB usage only if necessary for flight safety



