

MISSION DATA CARD

OPORD		Callsign		Mission		Date/Time		
3727/2025		Tusk 1		Transport		091400MAR25		
Task	ATO 1050 DEAD					Freq		
AO						123.45		
Departure				Recovery				
VFR				none				
#	Callsign		Pilot		IFF	TCN	LSR	NET
-1	Tusk 1-1		Butcher		3511	1Y	1551	01/01

LOADOUT

A/A					GUN	100% none
A/G	2xM-60D Machinegun Doorgunner				CHF	120
POD					FLR	120
TKS					FUEL	100%

TOLD

	Takeoff	Target	Joker	Bingo	Land
FUEL	6734	8000		6000	200

AIRBASES

	Name	TCN	ATIS	GND	TWR	RWY	Elev	ILS
Dep	Incirlik AFB	21X	377.47 5	371.35	360.1	5	190	
Arr	Ramat David AFB		118.4		118.6	27	125	
Div	Akrotiri AFB	107X	288.2	240.1	339.85	28	62	109.7

SUPPORT**AWACS**

Callsign

Freq

ALT

Pos

OVERLORD2

377.8

FL320

N3713 E03643 - N3714 E03749

RADIO CHANNELS

#	Freq	Name
1		Flight/Squadron specific
2	288.2	Akrotiri ATIS
3	240.1	Akrotiri Ground
4	339.85	Aktrotiri Tower
5	335.05	Akrotiri Approach
6	360.1	Incirlik Tower
7	371.35	Incirlik Ground
8	377.475	Incirlik ATIS
9		No Preset
10	127.3	Paphos ATIS
11	353.8	Paphos Tower
12	304.0	CVN-73 George Washington
13	302.0	LHA-1 Tarawa
14	259.0	CV-59 Forrestal
15		No Preset
16	377.8	Overlord
17	265.0	KC-135 Texaco-1 medium/slow
18	319.8	KC-135 Arco-1
19	360.8	KC-135MPRS Arco-2
20	256.0	S-3B Recovery Tanker

RAMROD

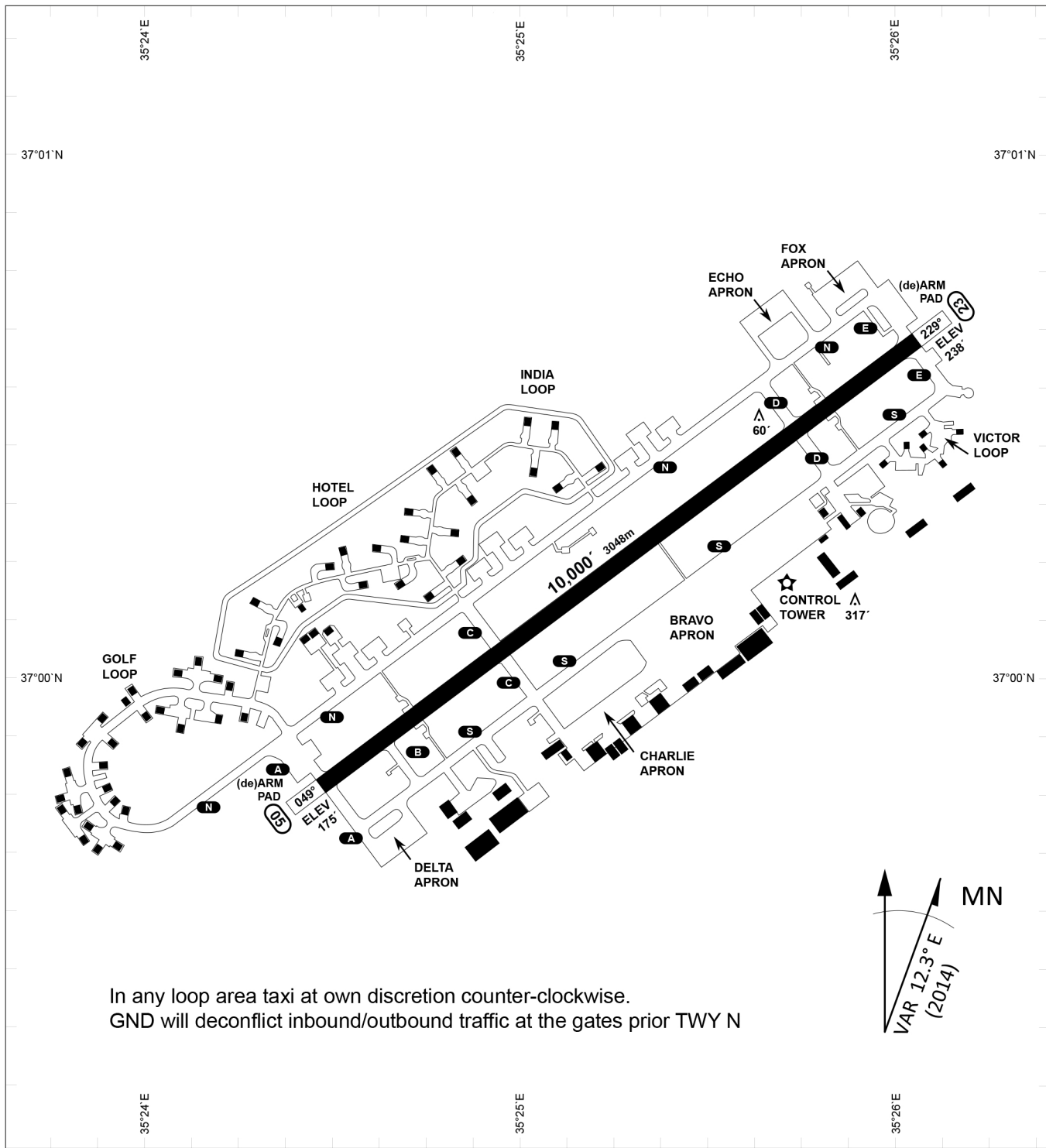
0	1	2	3	4	5	6	7	8	9
N	O	R	M	A	L	I	Z	E	S

KTC 1400 C

	0	1	2	3	4	5	6	7	8	9
A	ADQH	NCS	OEI	YG	KU	PWM	TV	BF	JX	LR
B	NROE	BAG	JQM	XF	ST	PHY	UI	KL	VW	CD
C	FNWJ	HUE	GDO	YB	AT	SCP	MQ	KV	RI	XL
D	RAXB	QGH	JLV	YP	UN	IDK	OF	SC	MT	EW
E	VGKO	JFD	AWC	HR	ET	PQU	XY	IS	MN	LB
F	JTBQ	RDV	MNX	LP	YH	WEA	UF	OS	GK	CI
G	VAYT	ESB	MIG	PX	HJ	KRQ	DU	NO	WC	LF
H	JHAI	VOK	YGX	UN	MD	QRL	ET	WS	PF	CB
I	THXG	IYR	QUK	AM	WC	JSV	PL	EN	BO	DF
J	HEJN	SYM	LKA	VU	WG	TRX	CP	IQ	OF	BD
K	ITXH	RGJ	FLM	BP	OC	KQD	SW	NV	EA	UY
L	JIMS	LBC	OPF	NX	DT	KAH	VW	GQ	EU	RY
M	OSPD	EGN	LJK	RW	QC	IMU	TH	AF	XY	VB
N	NXPL	YAQ	EBW	SC	UG	HDF	KO	IJ	TR	MV
O	CDEB	MJI	UYT	VF	AK	WHQ	GX	SP	RO	NL
P	YBQE	TNH	VXR	IO	UC	WLS	KA	JD	FG	MP
Q	UKVX	SAD	RHI	OW	YJ	MCN	EQ	LB	TG	PF
R	DWTH	CPV	NJX	KG	LS	BMR	FA	OY	EQ	UI
S	WCOT	XEB	SPQ	YK	RD	MGI	VF	HA	NL	JU
T	NRLG	CVQ	KYH	BP	TX	OSE	AJ	WI	MU	FD
U	GUXF	HRK	SIN	CM	PE	OAQ	WJ	VB	DL	TY
V	TELW	GJV	YQS	FR	IM	DCO	AK	BP	UH	XN
W	YKDF	UPS	TWR	GN	LB	OEV	MQ	AC	XI	HJ
X	BMOQ	TWF	RAL	KI	EN	UPC	GD	YV	JH	XS
Y	XFED	HCO	IKV	JA	GR	LWU	NT	BY	SP	QM

NAVAIDS

Id	Name	Channel	Position	Elevation
DAN	Incirlik	21	N37 00.950 E035 26.883	243
AKR	Akrotiri	107	N34 34.765 E032 57.769	147
PHA	Paphos	79	N34 42.997 E032 28.963	35
RMD	Ramat David	84	N32 39.892 E035 11.265	136
OS66	Kuweires Military Aviation Institute	36	N36 11.362 E037 34.226	1200



In any loop area taxi at own discretion counter-clockwise.
 GND will deconflict inbound/outbound traffic at the gates prior TWY N

PAR	RWY	CAT	MINIMA	ARP	ELEV	Scale 1:35'500
	21L	A B D E	2057 - 0.8 200 (200-0.8/1.6) GS 3°	37°0'56.000" N 35°26'53.000" E	1857 [ft]	0 300 600 900 1200 1500 [m] 0 1000 2000 3000 4000 5000 [ft]
	3R	A B D E	2057 - 0.8 200 (200-0.8/1.6) GS 3°		566 [m]	
SRA	21R	A C D E	2257 - 1.2 350 (350-1.2/1.6)			
	3L	A C D E	2257 - 1.2 350 (350-1.2/1.6)			

RWY	TORA	TORA from D	TORA from B	COURSE	PSN THR	ALS
23	10,000 [ft] 3048 [m]	8,000 [ft] 2438 [m]		235°	37°00.611'N 035°26.368'E	⊙
05	10,000 [ft] 3048 [m]		9,000 [ft] 2743 [m]	055°	36°59.043'N 035°24.760'E	⊙

ATIS	INCIRLIK GROUND	INCIRLIK TOWER	CONTROL	TACAN	ILS RWY 05	ILS RWY 23
377.475	371.350 123.020	360.100 121.100	337.800	DAN21x	109.3MHz	111.7MHz

ATIS
377.475 (#8)

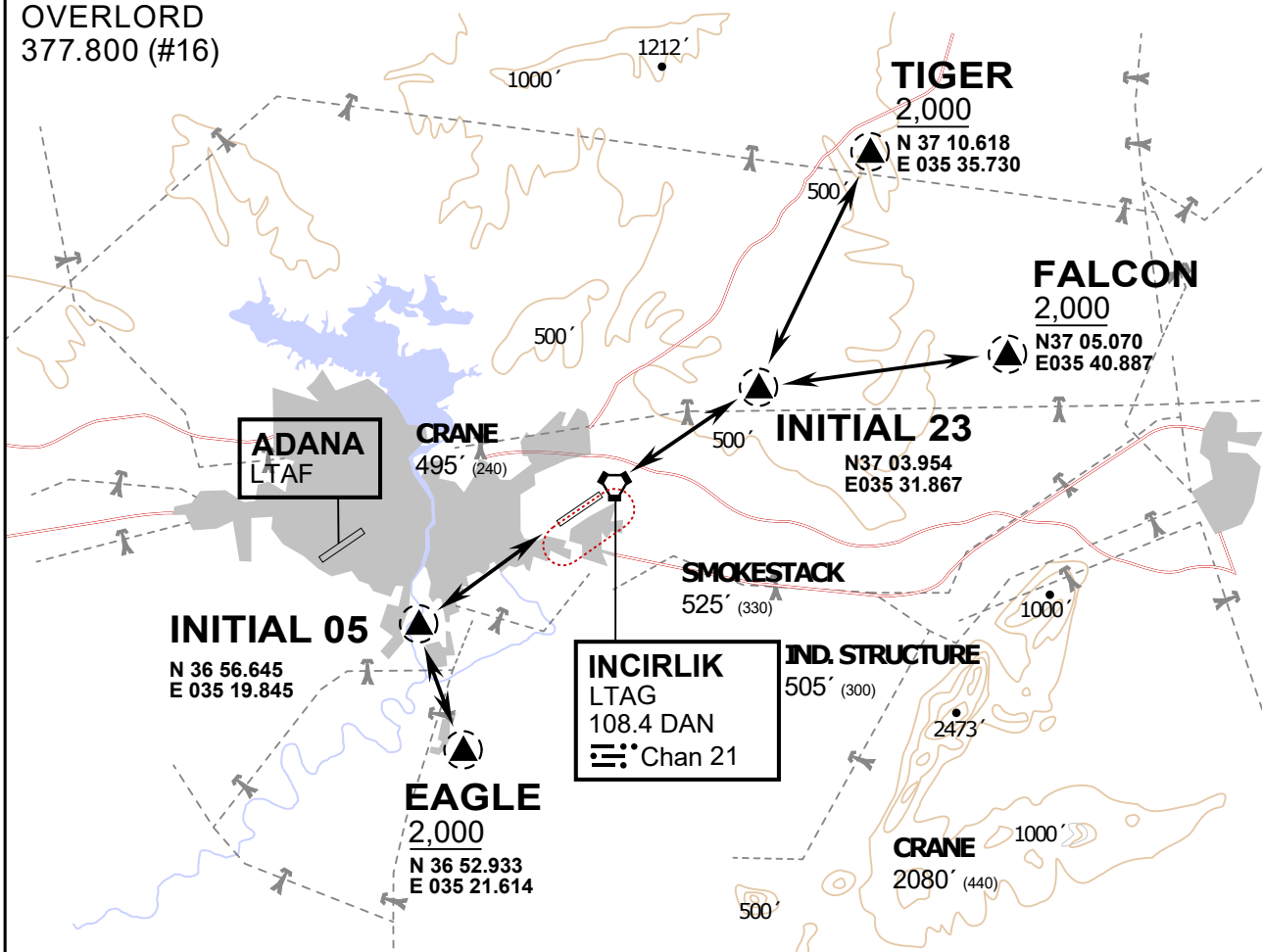
INCIRLIK GROUND
371.3500 (#7)

INCIRLIK TOWER
360.100 (#6)

OVERLORD
377.800 (#16)

NOT FOR CIVIL USE

CAUTION: If unable to comply with restrictions advise ATC prior to departure.



vJaBoG32 ETTR NAV CHART

ARR / DEP ROUTE DESCRIPTION

STRAIGHT-IN RWY 05 / 23

Pass entry EAGLE / TIGER / FALCON at 2000' and INITIAL at 1500'

OVERHEAD BREAK RWY 05 / 23

Pass entry EAGLE / TIGER / FALCON at 2500', pass INITIAL at 2000' break to the south at 2000' pattern altitude.

HELICOPTER ROUTES

Pass entry EAGLE / TIGER / FALCON at 1000' or below, pass INITIAL at 1000' break to the south at 1000' pattern altitude.

DEPARTURE ALL DIRECTIONS

pass DER below 1500ft

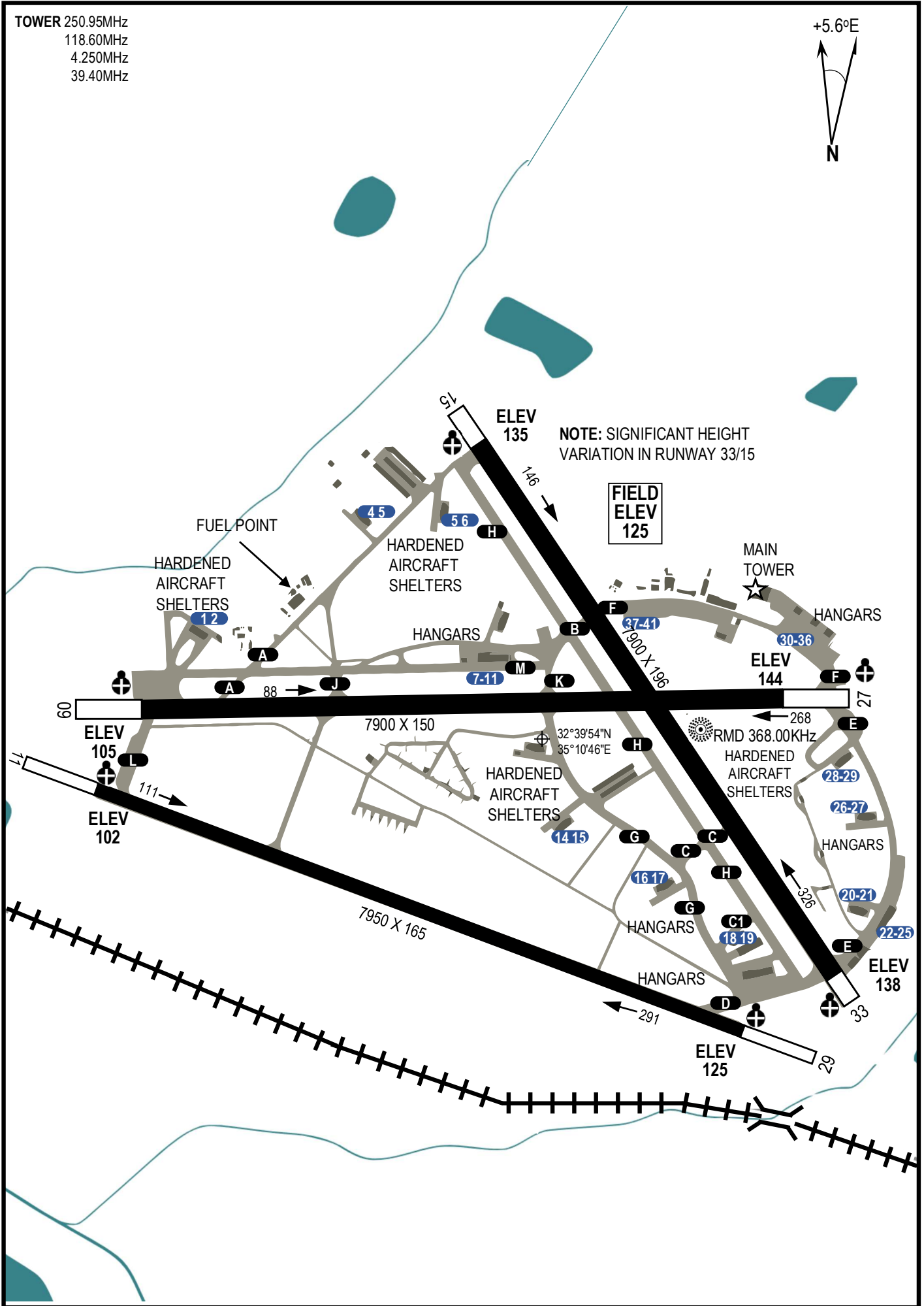
NOT AVAILABLE

TOWER 250.95MHz
118.60MHz
4.250MHz
39.40MHz



DCS SYRIA EFFECTIVE: 19 AUG 2020

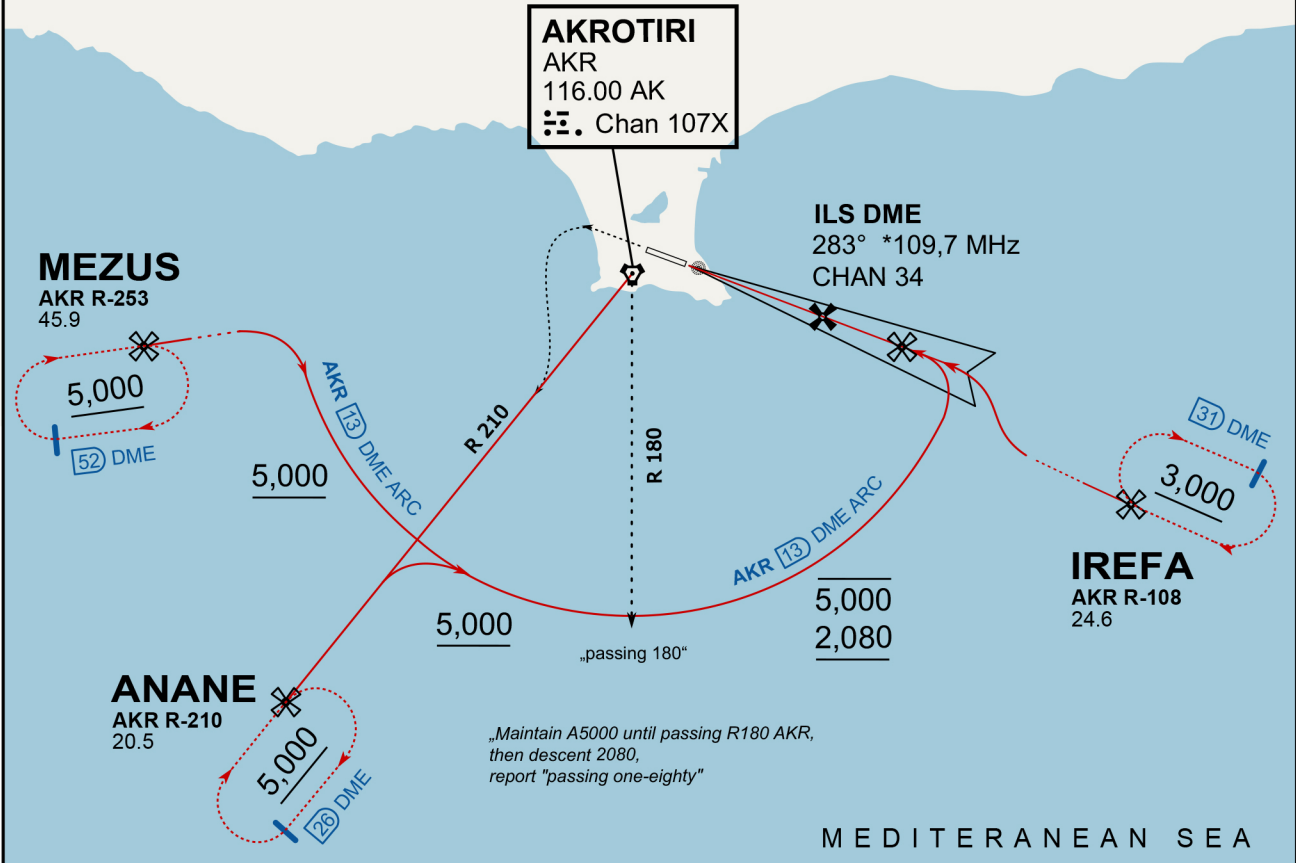
DCS SYRIA EFFECTIVE: 19 AUG 2020



ATIS
288.200
AKROTIRI GROUND
122.100
AKROTIRI TOWER
339.850
APP (OVERLORD)
377.800

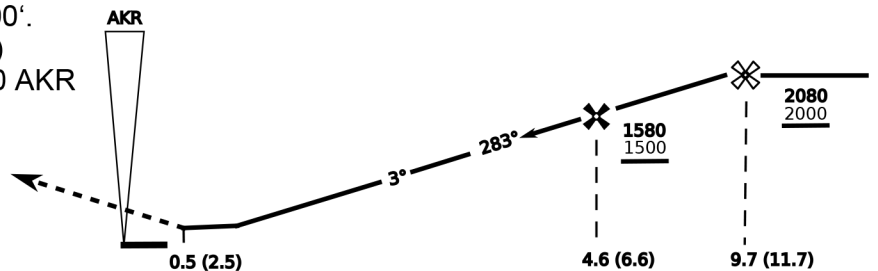
NOT FOR CIVIL USE

CAUTION: If unable to comply with restrictions advise ATC prior to departure.



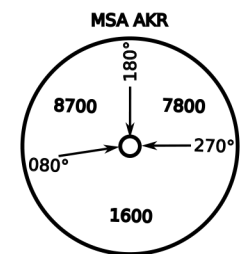
vJaBoG32 ETTR NAV CHART

On Track 283° climb A 4.000'.
passing 2.080' (2.000' AAL)
turn left and intercept R-210 AKR
to ANANE.
Enter ANANE Holding.

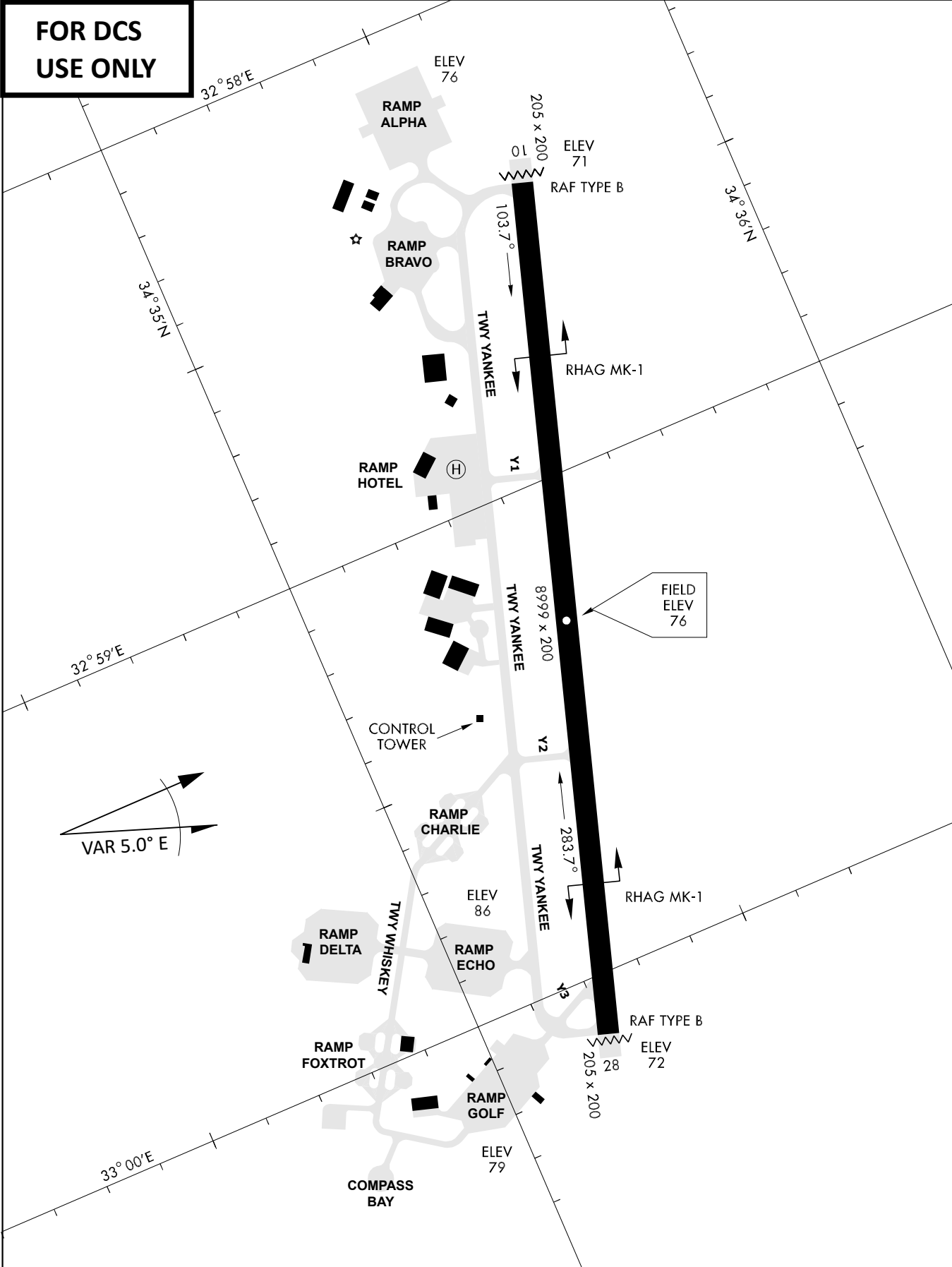


THR Elev 74ft DME I-AK (DME AKR)

CAT	ILS/DME	LOC/DME	CIRCLE	GS (kts)	80	120	150	180	210
				FAF - MAPt (4.1NM)	3:06	2:03	1:38	1:22	1:10
				RoD (fpm)	420	640	800	950	1110
A	280 (200)	390 (320) 800m	680 (610) 1500m	- CIRCLING PROHIBITED N of Rwy - no AUTO coupled ILS approaches - when established on ILS contact Tower - Timing not Auth to define MAPt					
B	800m		680 (610) 1600m						
C	290 (210) 800m		780 (710) 2400m						
D	310 (230) 800m		780 (710) 3600m						
E	340 (260) 800m		1380 (1310) 3600m						



**FOR DCS
 USE ONLY**



ATIS	AKROTIRI GND	AKROTIRI TWR	OVERLORD CONTROL	TACAN	FIELD ELEVATION
288.20 MHz	240.10 122.10	339.85 130.075	377.8	AKR 107X	75 [ft] 23 [m]