

**MISSION DATA CARD**

OPORD		Callsign		Mission		Date/Time		
3723/2025		Raptor 1		Training		080000MAR25		
Task	IFR					Freq		
AO	KOLA					134.0		
Departure				Recovery				
SID RWY 21				ILS RWY 21				
#	Callsign		Pilot		IFF	TCN	LSR	NET
-1	Raptor 1-1		Beethovenz		1611	1Y	1621	

**LOADOUT**

A/A						GUN	
A/G						CHF	
POD						FLR	
TKS						FUEL	

**TOLD**

	Takeoff	Target	Joker	Bingo	Land
FUEL	7163				

**AIRBASES**

	Name	TCN	ATIS	GND	TWR	RWY	Elev	ILS
Dep	Rovaniemi	14X	282.8	282.5	250.55	21	643	111.7
Arr	Rovaniemi	14X	282.8	282.5	250.55	21	643	111.7

**FLIGHTPLAN**

#	Name	Navaid/Coords/DME	ALT	TOT
1	NEMGU	N66 20.400 E024 41.650	10000	
2	NAFFI	N67 04.630 E023 11.660	10000	
3	Holding OSLIT	N66 54.169 E024 59.691	9000	
4	OSLIT	N66 51.750 E025 24.383	8500	
5	NIPAK	N66 42.350 E026 06.083	2800	
6	ROV	N66 33.827 E025 49.883	1500	
7	IBSAN	N66 42.500 E025 01.083	10000	
8	NAFFI	N67 04.630 E023 11.660	10000	
9	Holding ROTKO	N66 59.760 E025	9000	
10	ROTKO	N66 57.633 E025 57.667	8500	
11	NIPAK	N66 42.350 E026 06.083	2800	
12	ROV	N66 34.445 E025 50.875	1500	

## NOTES

Holding Heading OSLIT; 100 Inbound Degree  
Holding Heading ROTKO; 300 Inbound Degree

Höhe 9000 Plus, 1000 Höhen Separation

## RADIO CHANNELS

#	Freq	Name
1		Flight/Squadron specific
2	282.8	Rovaniemi ATIS
3	282.5	Rovaniemi Ground
4	250.55	Rovaniemi Tower
5	320.7	Bodo ATIS
6	250.75	Bodo Tower
7	235.45	Kallax ATIS
8	250.3	Kallax Tower
9	265.0	Texaco-1   KC-135   Medium / Slow   71Y
10	319.8	Arco-1   KC-135   High / Fast   22Y
11	360.8	Shell-1   KC-135 MPRS   High / Fast   41Y
12	304.0	CVN-71 Rough Rider (RRR)   71X
13	303.0	LHA-1 Tarawa (TWA)   79X
14	247.8	S-3B Mauler-1 (MAU)  64Y
15	347.8	Loki (E-2D)
16	348.7	Heimdall (E-3A)
17	242.17	ESR02 - CAS Range Operator
18	34.7	ESR02 - JTAC Odin
19	270.5	Blue
20	270.75	Red

**RAMROD**

0	1	2	3	4	5	6	7	8	9
B	L	O	C	K	H	E	A	D	S

**KTC 1400 C**

	0	1	2	3	4	5	6	7	8	9
A	QKNS	VEG	BUF	PO	JD	YWX	ML	IR	TC	HA
B	TOAS	FJI	LPU	HE	RV	CQM	NB	KY	DG	WX
C	PYSR	ANM	KCE	XH	FJ	BQW	TG	OU	DL	IV
D	GJUF	HRT	DCA	SM	VO	WBP	QI	YL	XE	NK
E	IJVM	WUP	ELF	SR	CH	GOY	AD	NX	QK	TB
F	JFDE	NQP	AYC	BV	OI	GUL	MX	HW	TS	RK
G	CVEU	FDM	WYN	JT	HK	PGX	IA	QR	LB	SO
H	YWIE	PRU	CHJ	DG	BA	TLS	NM	VX	OQ	FK
I	KSMP	RUA	INB	HY	VT	OXF	DC	QE	WL	GJ
J	AUEF	QSD	CPK	MR	YX	BHL	GO	JW	TN	IV
K	JDTB	ASX	MLY	EG	IP	CVQ	FW	NO	KU	HR
L	HPBM	CTK	WEA	JU	GY	RFV	QI	OS	ND	XL
M	LUIK	EOV	WGN	PX	MA	QTJ	SR	YC	FH	DB
N	AKSB	YIL	JWP	UD	CQ	FMV	GT	NR	EH	XO
O	UCME	AXT	ORH	SV	JB	DYP	IK	WF	LG	NQ
P	GBFO	VDW	SYX	KR	QH	LCN	IU	JM	AE	TP
Q	GHXT	IKF	DAU	OL	SN	RVC	PW	BM	JQ	YE
R	CFTG	KNX	HOA	LM	DV	WSU	JI	PY	RE	BQ
S	PCMS	OHD	WGL	RK	UT	FIA	YJ	XB	QV	NE
T	PQNX	ODU	GLI	YR	VC	SFA	TH	MW	EB	KJ
U	YXFI	ODP	AWT	HC	EK	VJG	RM	LN	BQ	SU
V	VGWH	QLR	PCS	EB	FJ	KMU	YA	NX	TD	IO
W	CODQ	HPS	ETG	YR	UV	KIX	FN	LM	WB	JA
X	KWRN	QSD	YBH	UA	CP	MVE	FX	TJ	OI	LG
Y	TKLC	ABR	XIG	NW	VP	QUO	HF	MJ	SD	YE

**NAVAIDS**

Id	Name	Channel	Position	Elevation
BOO	Bodo	45	N67 15.838 E014 20.046	43
BNK	Banak	47	N70 03.937 E024 58.181	17
OYA	Andoya	28	N69 17.175 E016 08.658	19

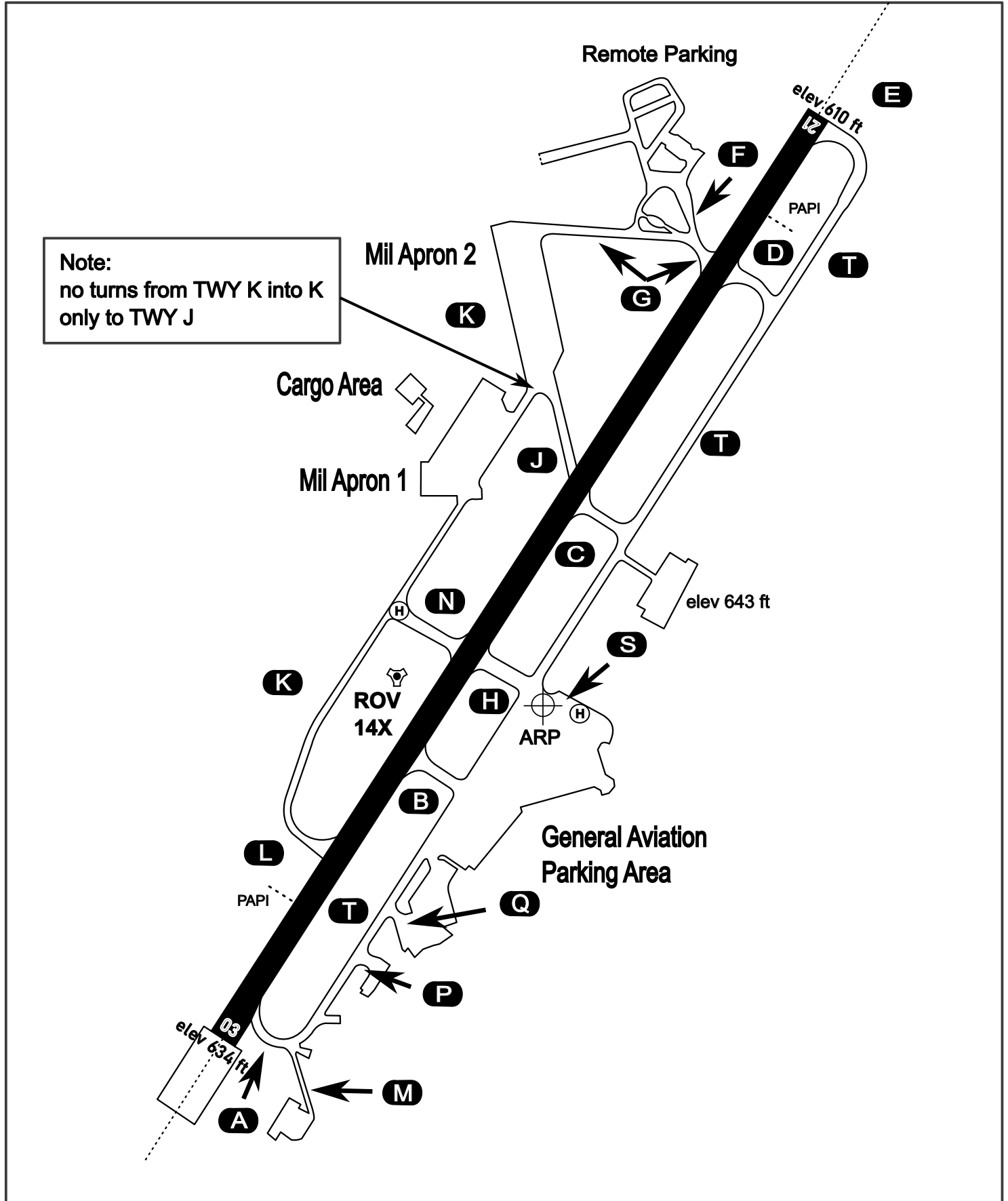
# AERODROME CHART

Rovaniemi Aerodrome

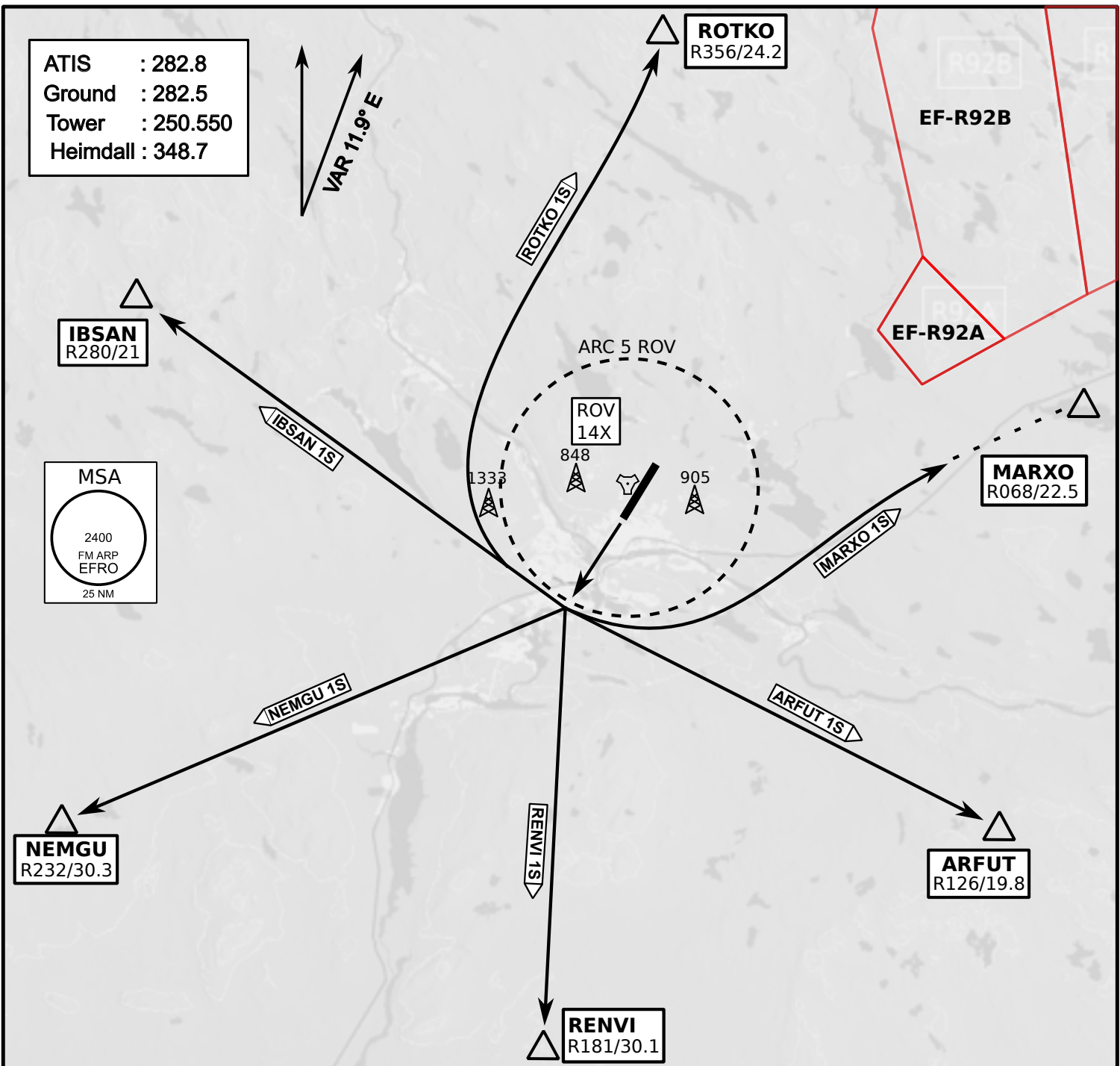
ARP N66° 33' 42" E025° 49' 51"

elev 643 ft

## ROVANIEMI, FINLAND

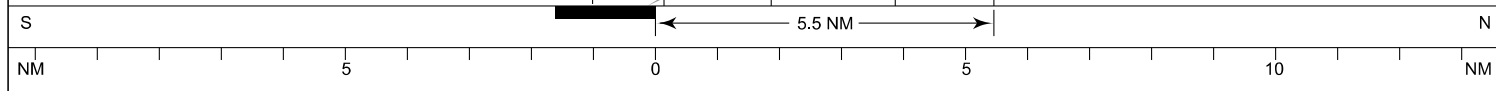
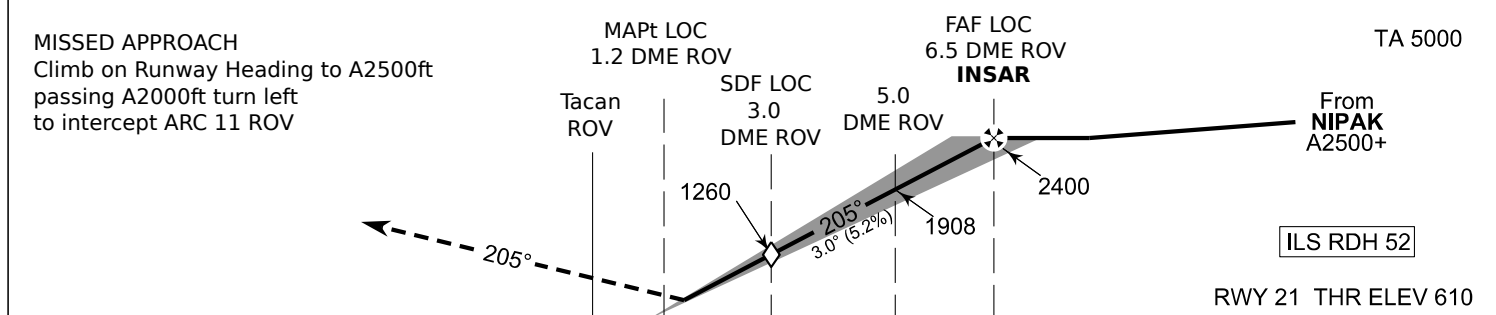
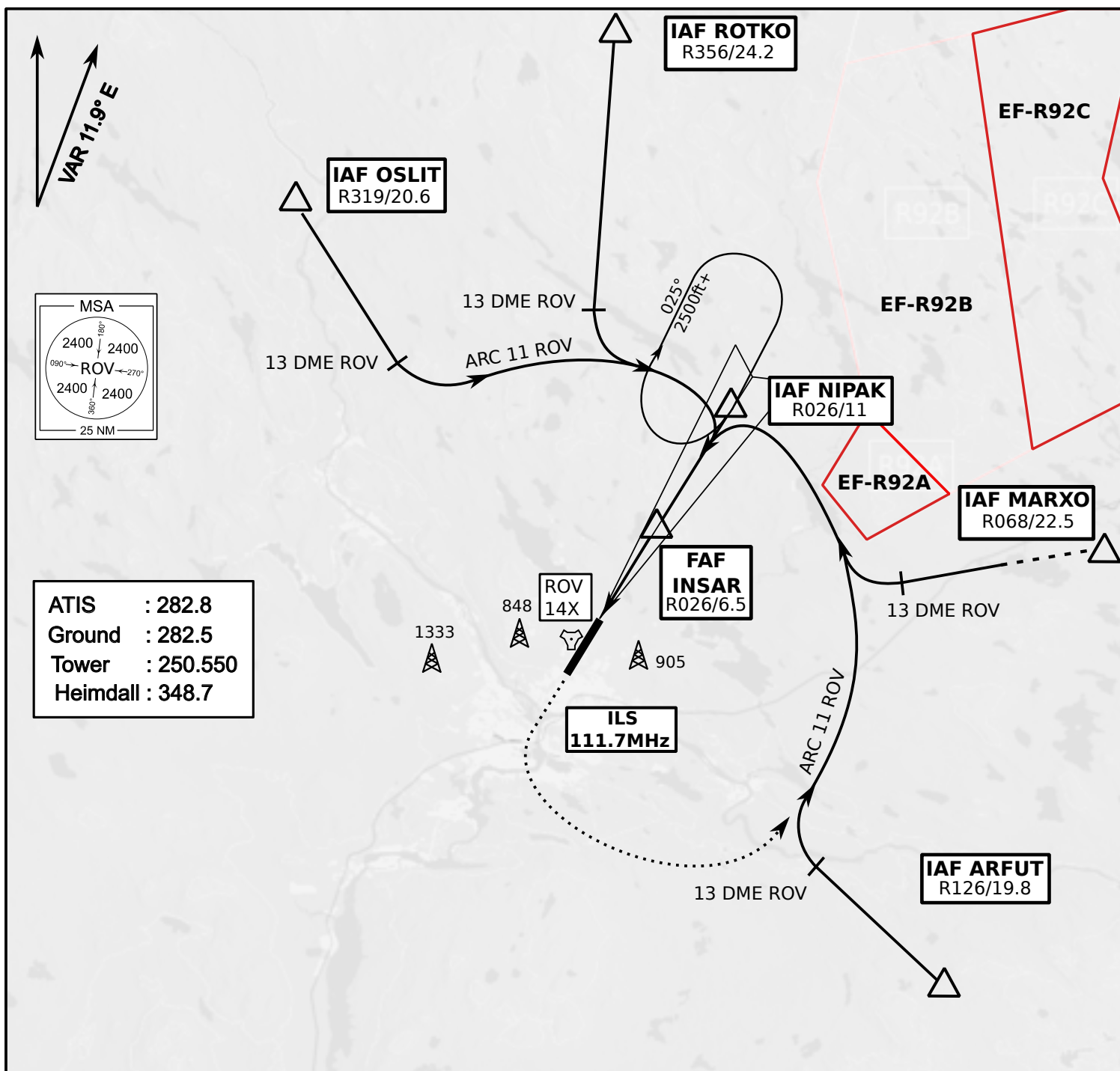


ATIS	Ground	Tower	Radar
282.800	282.500	250.550	348.700



- Climb on Rwy heading to min A2000ft
- when passing A2000ft OR 5 DME ROV (whichever is later) turn direct exit point
- Stay outside ARC 5 ROV
- AB usage only if necessary for flight safety





OCA (H)	A	B	C	D
ILS CAT I	773 (164)	784 (175)	795 (186)	809 (200)
LOC	930 (320)			
LOC WO SDF	1260 (650)			
Circling	1120 (470)	1150 (510)	1300 (660)	1340 (690)

	kt	90	100	120	140	160
FAF - MAPt 5.4 NM	min:sec	3:36	3:14	2:42	2:19	2:01
Rate of descent	ft/min	480	530	640	740	850

Timing not authorized for defining the MAPt