

MISSION DATA CARD

OPORD		Callsign		Mission		Date/Time		
3719/2025		Tusk 1		Training		082000MAR25		
Task						Freq		
AO	Syria					122.1		
Departure				Recovery				
VFR				VFR				
#	Callsign		Pilot		IFF	TCN	LSR	NET
-1	Tusk 1-1		Butcher		5211	1Y	1111	

LOADOUT

A/A					GUN	100% none	
A/G	2xM-60D Machinegun Doorgunner				CHF	120	
POD					FLR	120	
TKS					FUEL	100%	

TOLD

	Takeoff	Target	Joker	Bingo	Land
FUEL	6734				

AIRBASES

	Name	TCN	ATIS	GND	TWR	RWY	Elev	ILS
Dep	Incirlik AFB	21X	377.47 5	371.35	360.1	5	190	
Arr	Incirlik AFB	21X	377.47 5	371.35	360.1	5	190	
Div	FOB Tal Siman				252.5	10	980	

FLIGHTPLAN

#	Name	Navaid/Coords/DME	ALT	TOT
1	Dep	N36 58.214 E035 30.550	2000	
2	WP11	N36 58.811 E035 49.564	1000	
3	WP2	N36 46.357 E035 47.741	1500	
4	WP3	N36 29.911 E036	3000	
5	WP4	N36 24.549 E036	3500	
6	WP5	N36 22.345 E036 13.596	500	
7	Hatai	N36 21.673 E036 17.208	500	
8	WP8	N36 28.673 E036 15.035	1000	
9	WP9	N36 32.867 E036	1000	
10	WP10	N36 50.567 E035 53.509	1000	
11	WP12	N36 58.883 E035 49.614		
12	WP13	N36 58.214 E035 30.550	2000	
13	Arr	N37 E035 25.594	2000	

COMMS

Radio	Usage
1	Tusk 122.10 Overlord 127.8 => Push Wizard 125.6 after call

SUPPORT**AWACS**

Callsign

Freq

ALT

Pos

OVERLORD2

377.8

FL320

N3713 E03643 - N3714 E03749

RADIO CHANNELS

#	Freq	Name
1		Flight/Squadron specific
2	288.2	Akrotiri ATIS
3	240.1	Akrotiri Ground
4	339.85	Aktrotiri Tower
5	335.05	Akrotiri Approach
6	360.1	Incirlik Tower
7	371.35	Incirlik Ground
8	377.475	Incirlik ATIS
9		No Preset
10	127.3	Paphos ATIS
11	353.8	Paphos Tower
12	304.0	CVN-73 George Washington
13	302.0	LHA-1 Tarawa
14	259.0	CV-59 Forrestal
15		No Preset
16	377.8	Overlord
17	265.0	KC-135 Texaco-1 medium/slow
18	319.8	KC-135 Arco-1
19	360.8	KC-135MPRS Arco-2
20	256.0	S-3B Recovery Tanker

RAMROD

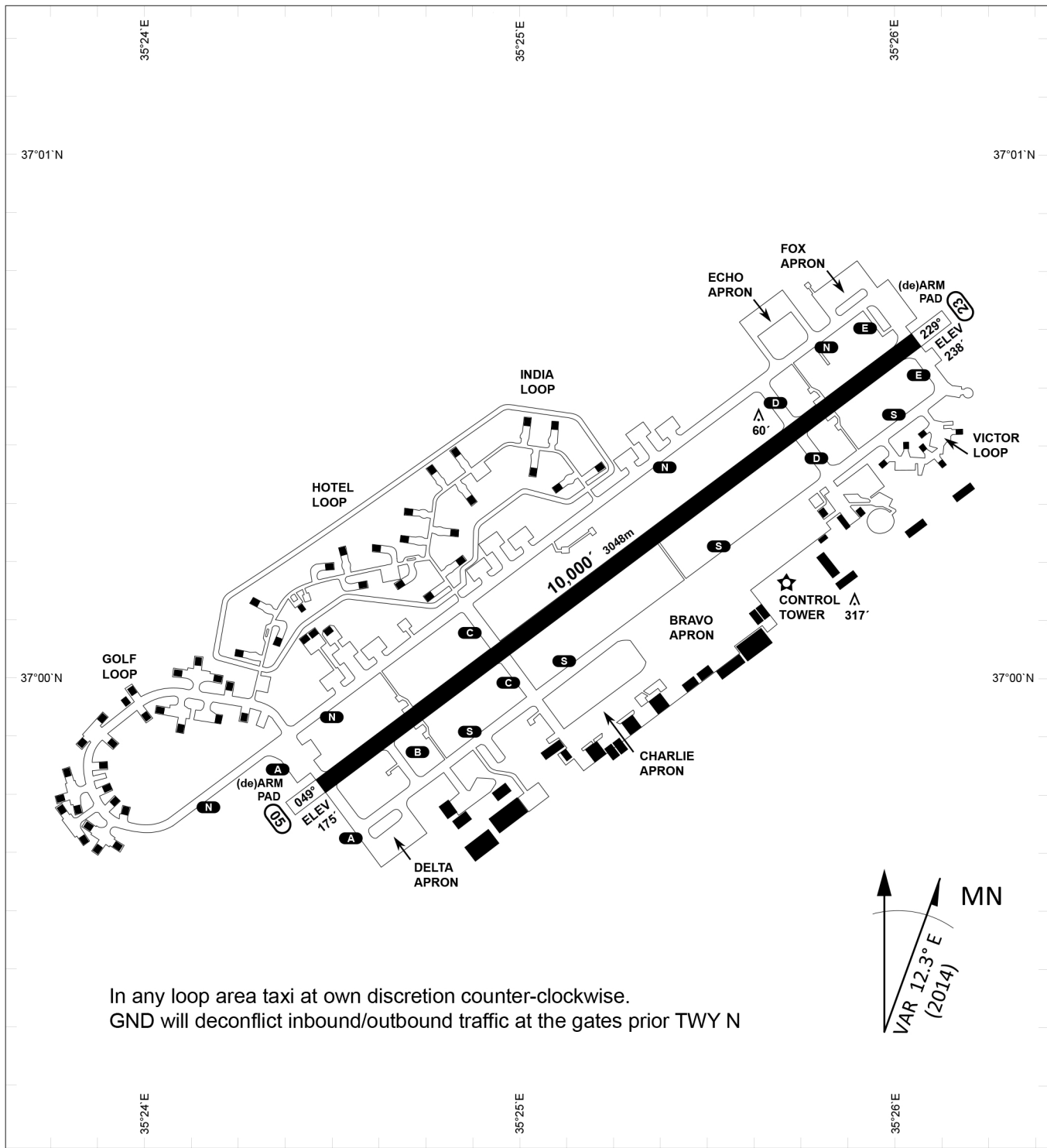
0	1	2	3	4	5	6	7	8	9
B	L	O	C	K	H	E	A	D	S

KTC 1400 C

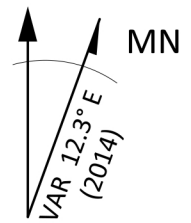
	0	1	2	3	4	5	6	7	8	9
A	QKNS	VEG	BUF	PO	JD	YWX	ML	IR	TC	HA
B	TOAS	FJI	LPU	HE	RV	CQM	NB	KY	DG	WX
C	PYSR	ANM	KCE	XH	FJ	BQW	TG	OU	DL	IV
D	GJUF	HRT	DCA	SM	VO	WBP	QI	YL	XE	NK
E	IJVM	WUP	ELF	SR	CH	GOY	AD	NX	QK	TB
F	JFDE	NQP	AYC	BV	OI	GUL	MX	HW	TS	RK
G	CVEU	FDM	WYN	JT	HK	PGX	IA	QR	LB	SO
H	YWIE	PRU	CHJ	DG	BA	TLS	NM	VX	OQ	FK
I	KSMP	RUA	INB	HY	VT	OXF	DC	QE	WL	GJ
J	AUEF	QSD	CPK	MR	YX	BHL	GO	JW	TN	IV
K	JDTB	ASX	MLY	EG	IP	CVQ	FW	NO	KU	HR
L	HPBM	CTK	WEA	JU	GY	RFV	QI	OS	ND	XL
M	LUIK	EOV	WGN	PX	MA	QTJ	SR	YC	FH	DB
N	AKSB	YIL	JWP	UD	CQ	FMV	GT	NR	EH	XO
O	UCME	AXT	ORH	SV	JB	DYP	IK	WF	LG	NQ
P	GBFO	VDW	SYX	KR	QH	LCN	IU	JM	AE	TP
Q	GHXT	IKF	DAU	OL	SN	RVC	PW	BM	JQ	YE
R	CFTG	KNX	HOA	LM	DV	WSU	JI	PY	RE	BQ
S	PCMS	OHD	WGL	RK	UT	FIA	YJ	XB	QV	NE
T	PQNX	ODU	GLI	YR	VC	SFA	TH	MW	EB	KJ
U	YXFI	ODP	AWT	HC	EK	VJG	RM	LN	BQ	SU
V	VGWH	QLR	PCS	EB	FJ	KMU	YA	NX	TD	IO
W	CODQ	HPS	ETG	YR	UV	KIX	FN	LM	WB	JA
X	KWRN	QSD	YBH	UA	CP	MVE	FX	TJ	OI	LG
Y	TKLC	ABR	XIG	NW	VP	QUO	HF	MJ	SD	YE

NAVAIDS

Id	Name	Channel	Position	Elevation
DAN	Incirlik	21	N37 00.950 E035 26.883	243
AKR	Akrotiri	107	N34 34.765 E032 57.769	147
PHA	Paphos	79	N34 42.997 E032 28.963	35
RMD	Ramat David	84	N32 39.892 E035 11.265	136
OS66	Kuweires Military Aviation Institute	36	N36 11.362 E037 34.226	1200



In any loop area taxi at own discretion counter-clockwise.
 GND will deconflict inbound/outbound traffic at the gates prior TWY N



PAR	RWY	CAT	MINIMA	ARP	ELEV	Scale 1:35'500
	21L	A B D E	2057 - 0.8 200 (200-0.8/1.6) GS 3°	37°0'56.000" N 35°26'53.000" E	1857 [ft]	0 300 600 900 1200 1500 [m] 0 1000 2000 3000 4000 5000 [ft]
	3R	A B D E	2057 - 0.8 200 (200-0.8/1.6) GS 3°		566 [m]	
SRA	21R	A C D E	2257 - 1.2 350 (350-1.2/1.6)			
	3L	A C D E	2257 - 1.2 350 (350-1.2/1.6)			

RWY	TORA	TORA from D	TORA from B	COURSE	PSN THR	ALS
23	10,000 [ft] 3048 [m]	8,000 [ft] 2438 [m]		235°	37°00.611'N 035°26.368'E	⊙
05	10,000 [ft] 3048 [m]		9,000 [ft] 2743 [m]	055°	36°59.043'N 035°24.760'E	⊙

ATIS	INCIRLIK GROUND	INCIRLIK TOWER	CONTROL	TACAN	ILS RWY 05	ILS RWY 23
377.475	371.350 123.020	360.100 121.100	337.800	DAN21x	109.3MHz	111.7MHz

ATIS
377.475 (#8)

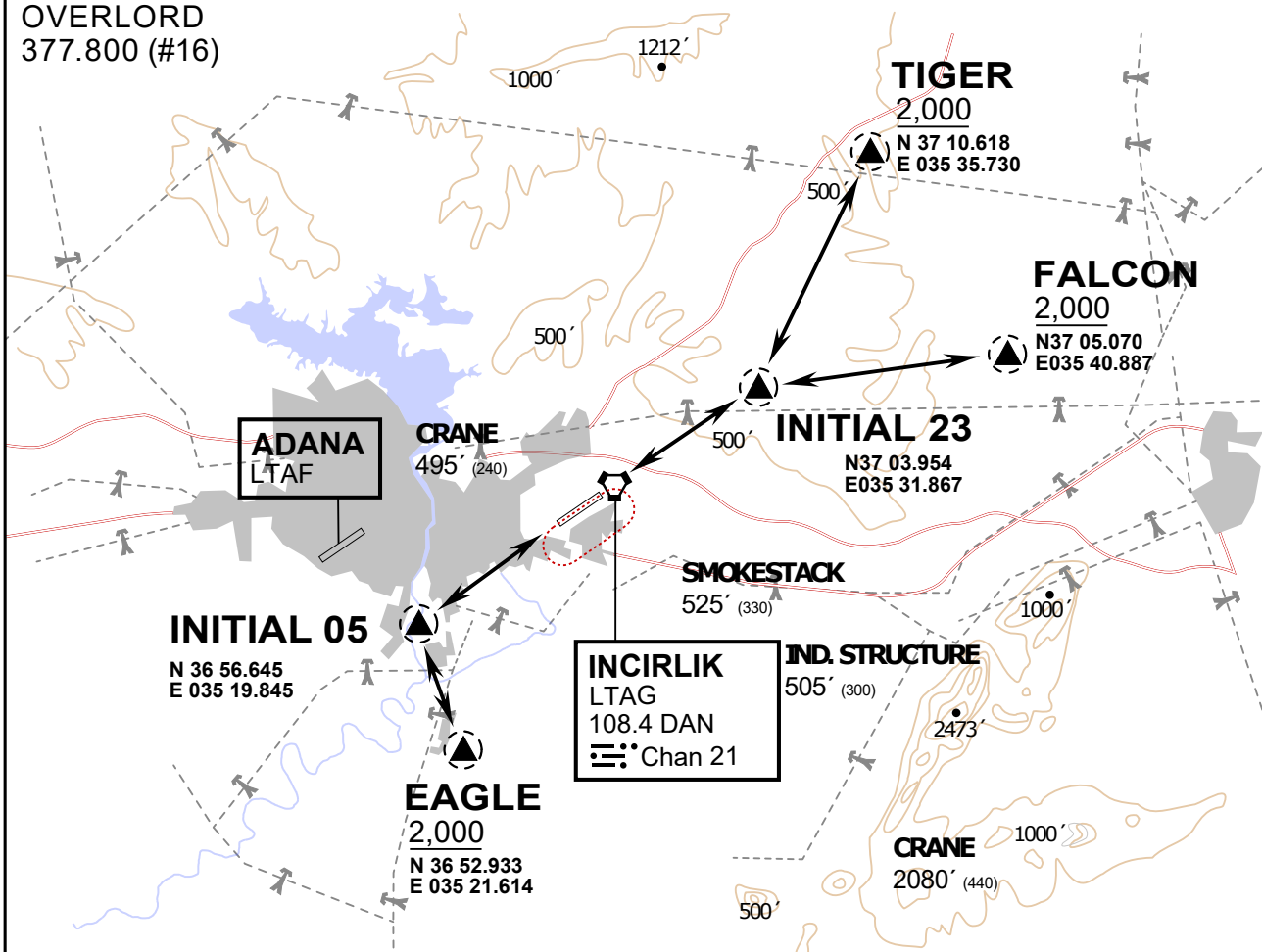
INCIRLIK GROUND
371.3500 (#7)

INCIRLIK TOWER
360.100 (#6)

OVERLORD
377.800 (#16)

NOT FOR CIVIL USE

CAUTION: If unable to comply with restrictions advise ATC prior to departure.



vJaBoG32 ETTR NAV CHART

ARR / DEP ROUTE DESCRIPTION

STRAIGHT-IN RWY 05 / 23

Pass entry EAGLE / TIGER / FALCON at 2000' and INITIAL at 1500'

OVERHEAD BREAK RWY 05 / 23

Pass entry EAGLE / TIGER / FALCON at 2500', pass INITIAL at 2000' break to the south at 2000' pattern altitude.

HELICOPTER ROUTES

Pass entry EAGLE / TIGER / FALCON at 1000' or below, pass INITIAL at 1000' break to the south at 1000' pattern altitude.

DEPARTURE ALL DIRECTIONS

pass DER below 1500ft

ATIS
377.475 (#8)

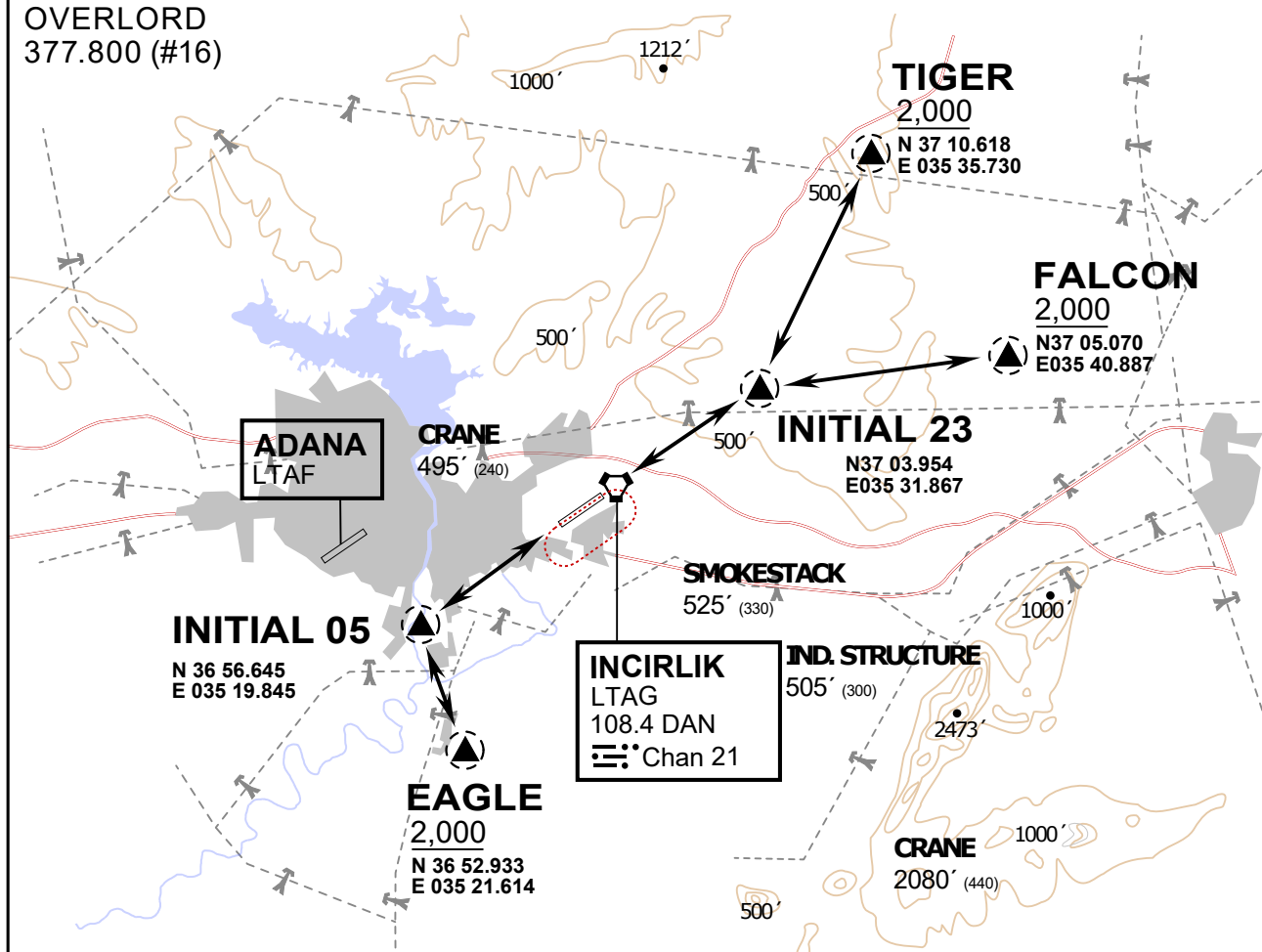
INCIRLIK GROUND
371.3500 (#7)

INCIRLIK TOWER
360.100 (#6)

OVERLORD
377.800 (#16)

NOT FOR CIVIL USE

CAUTION: If unable to comply
with restrictions advise ATC
prior to departure.



vJaBoG32 ETRR NAV CHART



ARR / DEP ROUTE DESCRIPTION

STRAIGHT-IN RWY 05 / 23

Pass entry EAGLE / TIGER / FALCON at 2000' and INITIAL at 1500'

OVERHEAD BREAK RWY 05 / 23

Pass entry EAGLE / TIGER / FALCON at 2500',
pass INITIAL at 2000' break to the south at 2000' pattern altitude.

HELICOPTER ROUTES

Pass entry EAGLE / TIGER / FALCON at 1000' or below, pass INITIAL at 1000' break to the south at 1000' pattern altitude.

DEPARTURE ALL DIRECTIONS

pass DER below 1500ft

NOT AVAILABLE

NOT AVAILABLE