

MISSION DATA CARD

OPORD	Callsign	Mission	Date/Time			
3718/2025	Raptor 1	Training	071730MAR25			
Task						Freq
AO						134.0
Departure			Recovery			
SID RWY 21			ILS RWY 21			
#	Callsign	Pilot	IFF	TCN	LSR	NET
-1	Raptor 1-1	Meteor	1611	1Y	1611	

LOADOUT

A/A					GUN	
A/G					CHF	
POD					FLR	
TKS					FUEL	

TOLD

	Takeoff	Target	Joker	Bingo	Land
FUEL	7163				

AIRBASES

	Name	TCN	ATIS	GND	TWR	RWY	Elev	ILS
Dep	Rovaniemi	14X	282.8	282.5	250.55	21	643	111.7
Arr	Rovaniemi	14X	282.8	282.5	250.55	21	643	111.7
Div	Kemi Tornio	106X			250.3	36	62	110.9

FLIGHTPLAN

#	Name	Navaid/Coords/DME	ALT	TOT
1	IBSAN	N66 42.500 E025 01.083	3000	
2	OSLIT	N66 51.750 E025 24.383	3000	
3	NIPAK	N66 42.350 E026 06.083	3000	
4	ROTKO	N66 57.633 E025 57.667	3000	

SUPPORT**Tanker**

Callsign	TCN	Freq	ALT	TAS
ARCO 1	22Y	319.8		
Pos				

RADIO CHANNELS

#	Freq	Name
1		Flight/Squadron specific
2	282.8	Rovaniemi ATIS
3	282.5	Rovaniemi Ground
4	250.55	Rovaniemi Tower
5	320.7	Bodo ATIS
6	250.75	Bodo Tower
7	235.45	Kallax ATIS
8	250.3	Kallax Tower
9	265.0	Texaco-1 KC-135 Medium / Slow 71Y
10	319.8	Arco-1 KC-135 High / Fast 22Y
11	360.8	Shell-1 KC-135 MPRS High / Fast 41Y
12	304.0	CVN-71 Rough Rider (RRR) 71X
13	303.0	LHA-1 Tarawa (TWA) 79X
14	247.8	S-3B Mauler-1 (MAU) 64Y
15	347.8	Loki (E-2D)
16	348.7	Heimdall (E-3A)
17	242.17	ESR02 - CAS Range Operator
18	34.7	ESR02 - JTAC Odin
19	270.5	Blue
20	270.75	Red

RAMROD

0	1	2	3	4	5	6	7	8	9
D	I	S	G	R	U	N	T	L	E

KTC 1400 C

	0	1	2	3	4	5	6	7	8	9
A	NCOT	IGL	QKE	RA	BV	JHM	UP	YS	DW	XF
B	LKVC	FSI	NGA	DR	PY	THX	QJ	BM	EU	WO
C	HNWK	QUD	VOR	SF	JG	MIA	CY	BE	LX	TP
D	ELYP	TBK	CWU	RX	DQ	JHM	OA	NI	GV	FS
E	SKJV	ADY	HUT	BX	LM	WIC	PQ	EN	FG	RO
F	QPWJ	RBO	NFV	KL	HD	USX	EY	MT	CG	IA
G	RIKN	HXF	MTB	JQ	YA	OLC	EV	GD	UP	WS
H	SFOA	DGI	WXQ	HJ	TK	RUN	EV	PC	YL	BM
I	RALB	DXE	CFN	OK	GH	VYI	TJ	UM	WQ	PS
J	DPWS	GYU	IEQ	KN	TO	HCA	RL	XJ	MB	FV
K	QACV	YGL	TRE	PF	MK	XUD	HI	JN	OS	WB
L	HJQT	FWA	YNR	CV	XG	IKL	MU	DE	SP	BO
M	XMYP	TOJ	URA	VW	QN	GLB	HK	FS	CE	DI
N	SBHU	REI	FQG	YO	NW	AMV	CX	KD	JL	PT
O	AGMC	EOL	DXY	QW	HI	NRU	KB	PS	FJ	VT
P	EHMD	QJO	YPA	RI	WK	CNL	GU	VX	FB	TS
Q	TDSG	NFX	MOI	CW	AJ	LVK	YH	EQ	RB	PU
R	FDHM	TQW	OAN	JK	BR	GXV	IE	LS	UC	YP
S	TNIL	AEU	JOG	DS	MY	BPQ	KV	XF	CW	HR
T	KJQT	VYU	GRM	IB	XH	ANW	EC	SO	PL	FD
U	YVGH	WOX	DIJ	CM	US	NLR	PF	AQ	BK	ET
V	FTMY	UEV	WCB	HA	SX	IKR	LG	OQ	NJ	DP
W	UYGC	FKV	JRW	BN	SL	AEX	DH	PT	OM	QI
X	DJLY	CHV	EIU	TQ	BM	GOS	PK	RX	NA	FW
Y	QAMB	CLX	DRS	PG	HO	VET	IW	YN	FK	JU

NAVAIDS

Id	Name	Channel	Position	Elevation
BOO	Bodo	45	N67 15.838 E014 20.046	43
BNK	Banak	47	N70 03.937 E024 58.181	17
OYA	Andoya	28	N69 17.175 E016 08.658	19

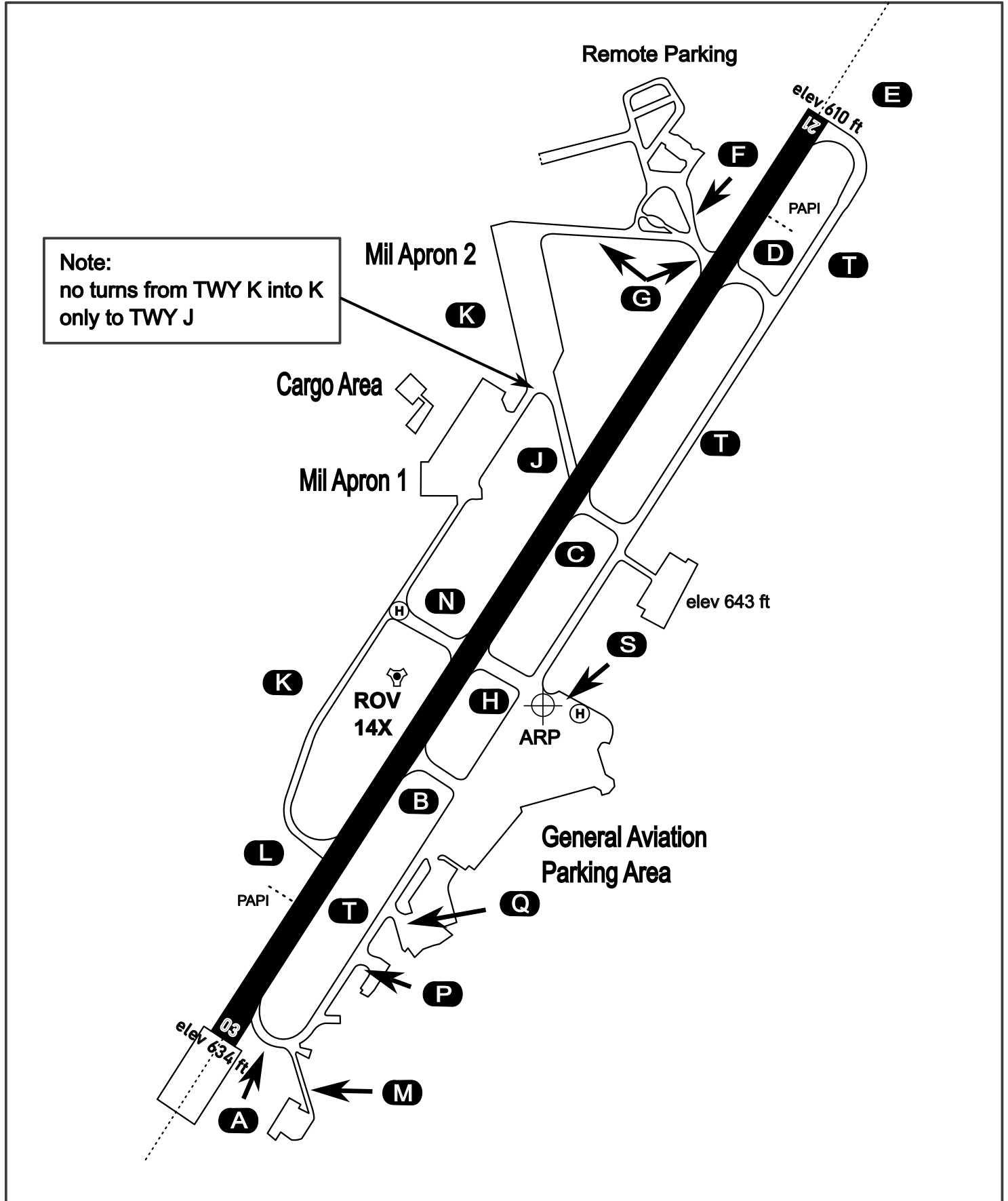
AERODROME CHART

Rovaniemi Aerodrome

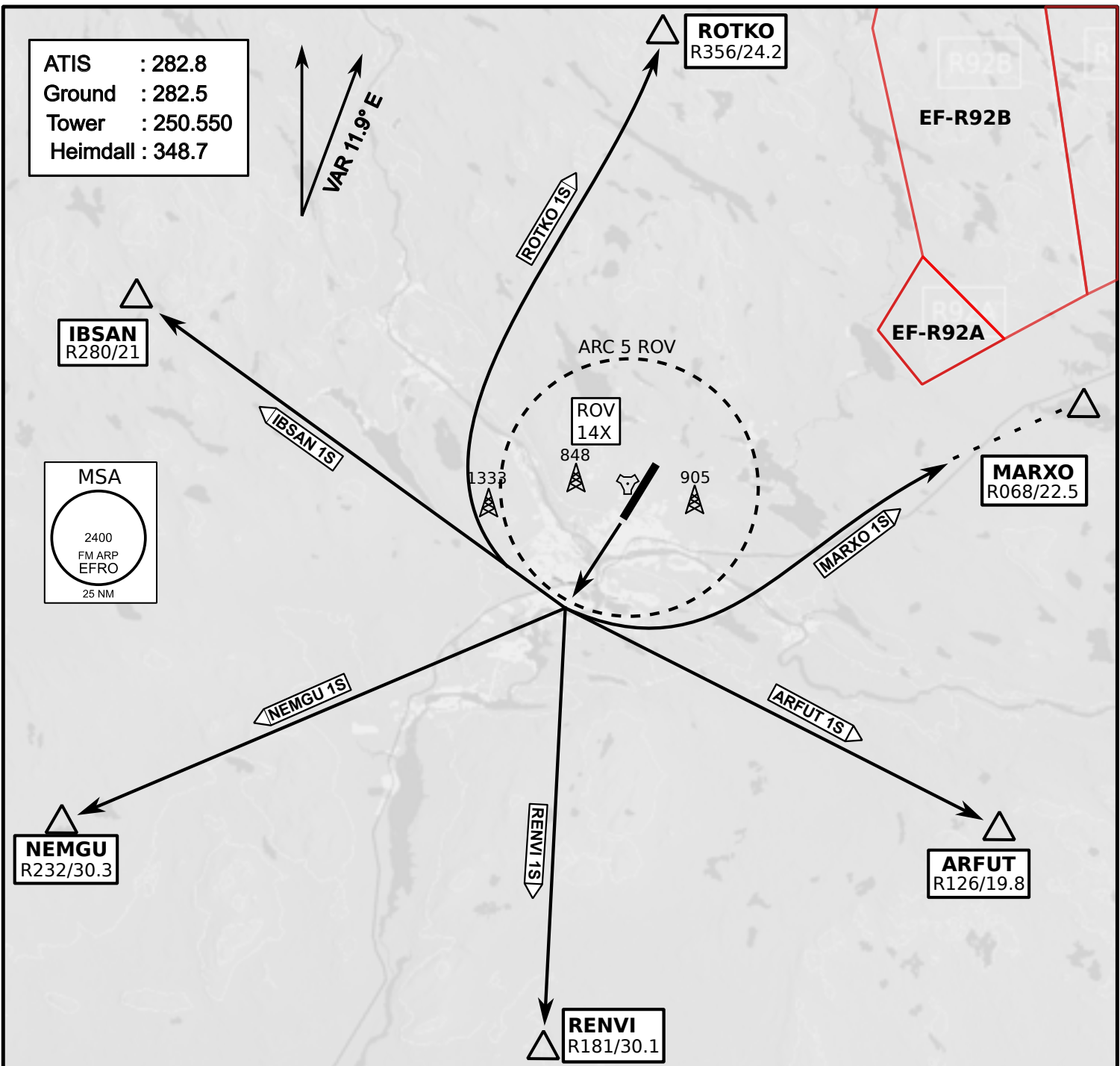
ARP N66° 33' 42" E025° 49' 51"

elev 643 ft

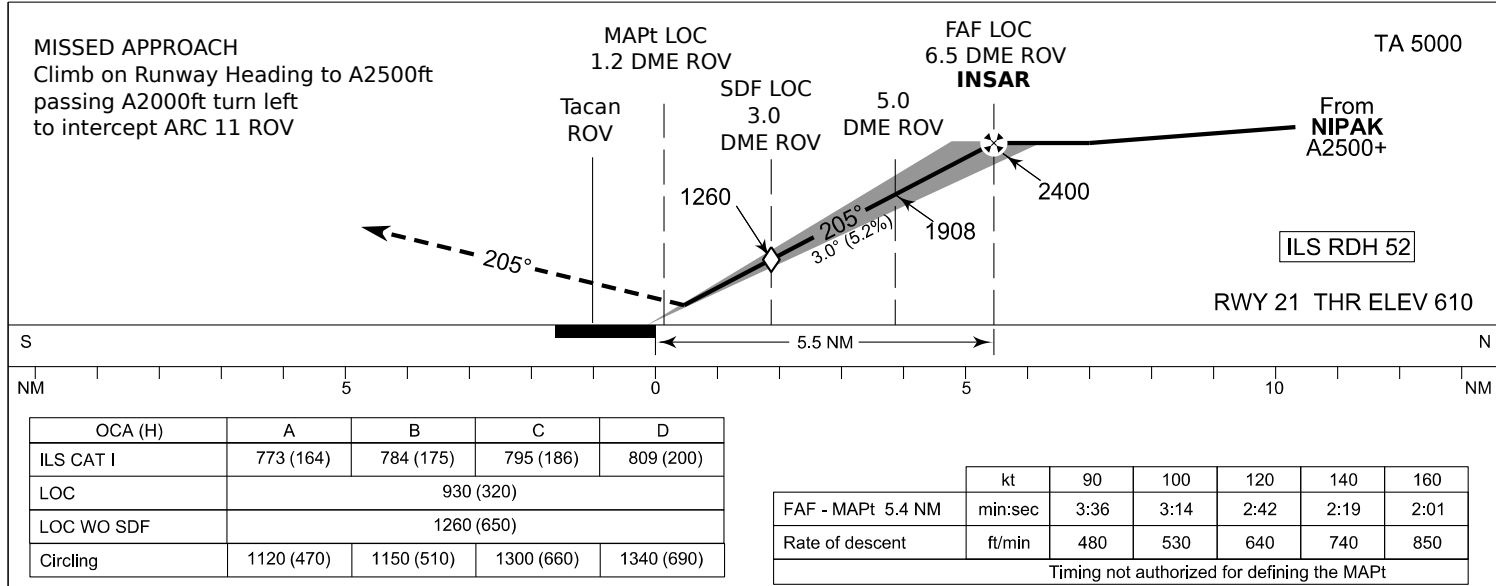
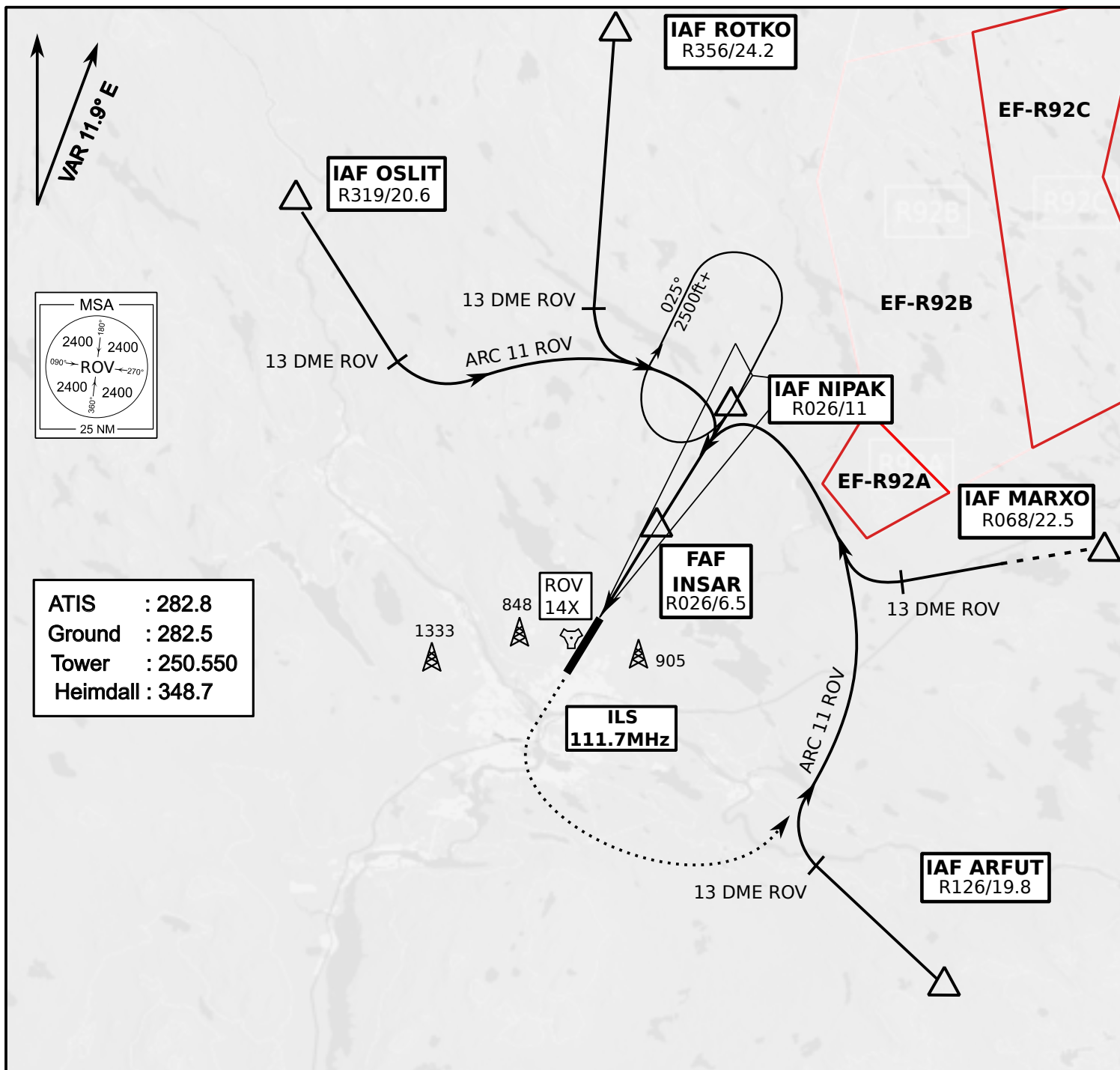
ROVANIEMI, FINLAND



ATIS	Ground	Tower	Radar
282.800	282.500	250.550	348.700



- Climb on Rwy heading to min A2000ft
- when passing A2000ft OR 5 DME ROV (whichever is later) turn direct exit point
- Stay outside ARC 5 ROV
- AB usage only if necessary for flight safety



NOT AVAILABLE

NOT AVAILABLE