

MISSION DATA CARD

OPORD		Callsign		Mission		Date/Time		
3716/2025		Rattler 4		Training		062300MAR25		
Task							Freq	
AO							133.5	
Departure				Recovery				
VFR Helicopter				VFR Helicopter				
#	Callsign		Pilot		IFF	TCN	LSR	NET
-1	Rattler 4-1		Laud		4641	1Y	1251	
-2	Rattler 4-2		Remotex		4642	64Y	1252	
-3	Rattler 4-3		Warblade		4643	64X	1253	

LOADOUT

A/A						GUN	15% HEDP
A/G	2xM229 - HE MPP, 8xAGM114K					CHF	30
POD						FLR	60
TKS						FUEL	75%

TOLD

	Takeoff	Target	Joker	Bingo	Land
FUEL	1884				

AIRBASES

	Name	TCN	ATIS	GND	TWR	RWY	Elev	ILS
Dep	Rovaniemi	14X	282.8	282.5	250.55	21	643	111.7
Arr	Rovaniemi	14X	282.8	282.5	250.55	21	643	111.7

FLIGHTPLAN

#	Name	Navaid/Coords/DME	ALT	TOT
1	VIKA	N66 37.474 E026 13.557		
2	R92A.FARP.KI MI	N66 37.800 E026 22.717		
3	Entry	N66 40.549 E026 35.346		
4	Lake South	N66 43.210 E026 40.925		
5	Lake North	N66 46.756 E026 39.784		
6	R92B.BP.HUN TER	N66 47.250 E026 28.283		

COMMS

Radio	Usage
1	133.5
2	282.5 / 250.55 / 348.7
3	35.35
4	30.00

OTHER FLIGHTS

Callsign	Mission	Airframe	Freq	TCN	Grpld	Laser
Raptor 1	Training	4x F-16C	134.0	1/64		162X
AO	KOLA	Task	IFR			
Monster 1	Strike	4x A-10C	132.15	1/64	21	161X
AO	Static 3	Task	Strike SCUD			
Raptor 2	Training	4x F-16C	134.0	1/64		162X
AO	KOLA	Task	IFR			
Tiger 4	Training	4x F/A-18C	261.15	1/64		155X
AO		Task	BVR 2 on 2			

RADIO CHANNELS

#	Freq	Name
1		Flight/Squadron specific
2	282.8	Rovaniemi ATIS
3	282.5	Rovaniemi Ground
4	250.55	Rovaniemi Tower
5	320.7	Bodo ATIS
6	250.75	Bodo Tower
7	235.45	Kallax ATIS
8	250.3	Kallax Tower
9	265.0	Texaco-1 KC-135 Medium / Slow 71Y
10	319.8	Arco-1 KC-135 High / Fast 22Y
11	360.8	Shell-1 KC-135 MPRS High / Fast 41Y
12	304.0	CVN-71 Rough Rider (RRR) 71X
13	303.0	LHA-1 Tarawa (TWA) 79X
14	247.8	S-3B Mauler-1 (MAU) 64Y
15	347.8	Loki (E-2D)
16	348.7	Heimdall (E-3A)
17	242.17	ESR02 - CAS Range Operator
18	34.7	ESR02 - JTAC Odin
19	270.5	Blue
20	270.75	Red

RAMROD

0	1	2	3	4	5	6	7	8	9
L	Y	M	P	H	A	T	I	C	S

KTC 1400 C

	0	1	2	3	4	5	6	7	8	9
A	AUHK	VEO	BIF	MY	NP	JDL	RS	TQ	XG	WC
B	BVEU	IDS	KWQ	RL	FG	OJC	TN	MX	HA	YP
C	XAYF	NPG	HDQ	SM	EB	KIL	VU	JO	CT	WR
D	QPAG	FST	ICY	KU	WH	DML	OB	EJ	NX	RV
E	XLOD	YIU	CTN	RF	KM	HQE	SA	PJ	GW	VB
F	TMNC	EYS	JQW	DH	BL	VOA	IR	PX	UG	KF
G	SBPN	XDQ	OET	WY	LR	IUJ	CM	GF	KH	VA
H	FHTR	KJG	VUI	EC	DS	YMO	AL	NW	QP	XB
I	HLBT	VKD	WUX	OY	CS	IEN	GP	RF	JQ	AM
J	AKPU	FWG	JYN	EH	LD	IBV	XO	MQ	TS	CR
K	DRTA	KNC	EGV	JO	SX	YUL	QH	IB	WF	MP
L	APFM	YBD	KJI	XN	QV	EWR	UL	HO	GT	SC
M	REQF	GLV	WXT	IY	MH	OPS	NB	KJ	DC	UA
N	VCYF	JUH	MNK	QA	GE	DXT	SP	RO	IL	BW
O	JKHG	MDR	TVI	BS	EY	UPQ	ON	AC	FW	XL
P	MKIY	TOX	QNF	HD	WS	EGP	UB	LR	JC	AV
Q	BHQI	NPS	FXY	JE	WM	CRA	KU	TG	VD	LO
R	FASB	WVK	QGL	XO	IJ	DME	RU	HY	TN	PC
S	HXUN	EMI	CGW	LR	VQ	AYF	OD	KP	TB	SJ
T	TXHU	BPO	CFG	WY	QI	MEJ	SN	VA	KL	DR
U	CANI	EXR	BMP	QJ	KH	FDO	TY	GL	UW	SV
V	VJUY	XMD	IAL	GE	TB	CHP	NR	FS	KO	WQ
W	NCKR	YWD	UFE	BX	JV	IPL	OH	MS	TG	QA
X	BMRH	AFU	JIY	EN	LG	QDP	CT	OK	XW	SV
Y	THOY	KSI	VUL	NC	JW	GFA	ME	XB	RP	QD

NAVAIDS

Id	Name	Channel	Position	Elevation
BOO	Bodo	45	N67 15.838 E014 20.046	43
BNK	Banak	47	N70 03.937 E024 58.181	17
OYA	Andoya	28	N69 17.175 E016 08.658	19

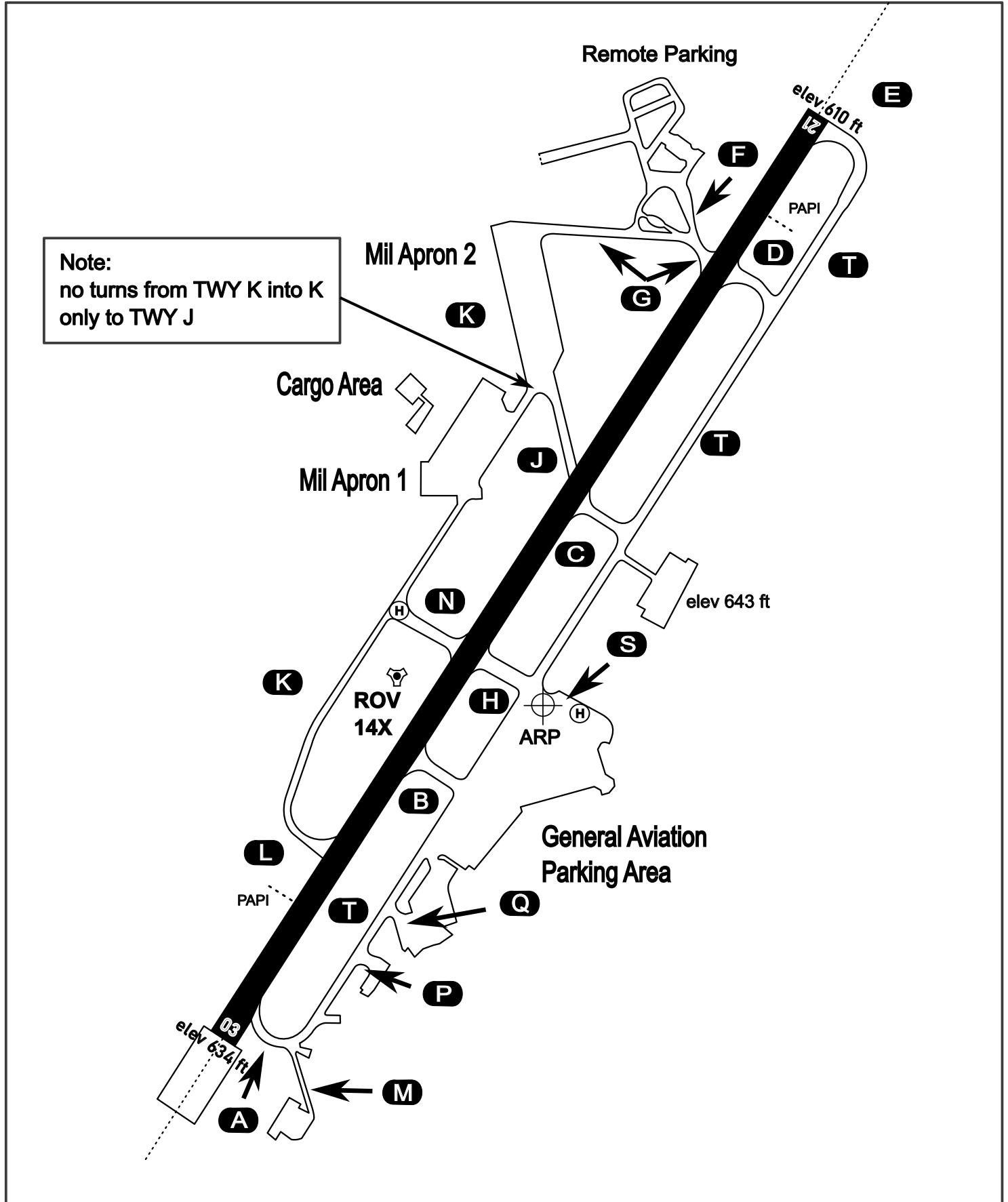
AERODROME CHART

Rovaniemi Aerodrome

ARP N66° 33' 42" E025° 49' 51"

elev 643 ft

ROVANIEMI, FINLAND

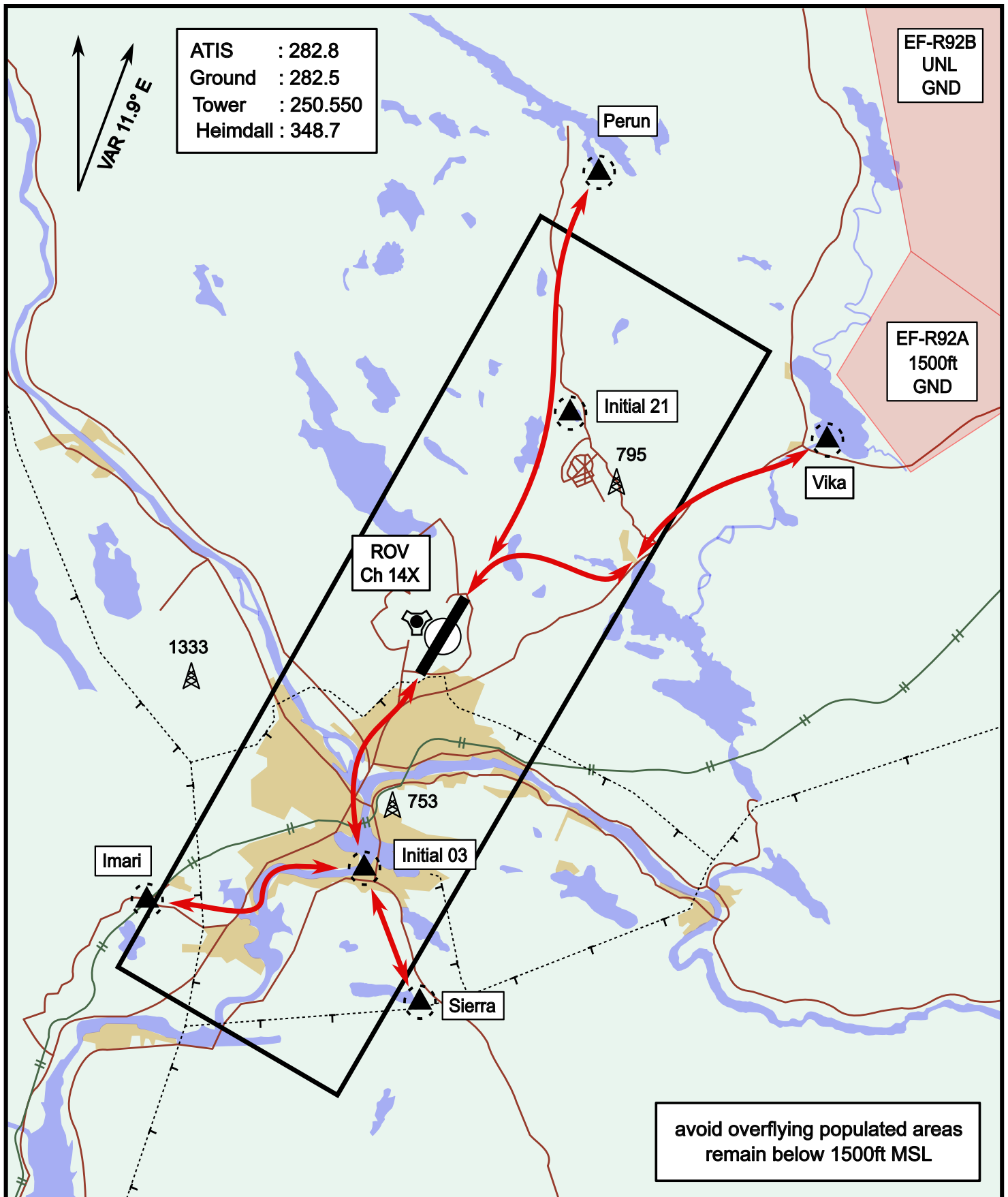


ATIS	Ground	Tower	Radar
282.800	282.500	250.550	348.700

Helicopter Routing

elev 643 ft

Rovaniemi, Finland

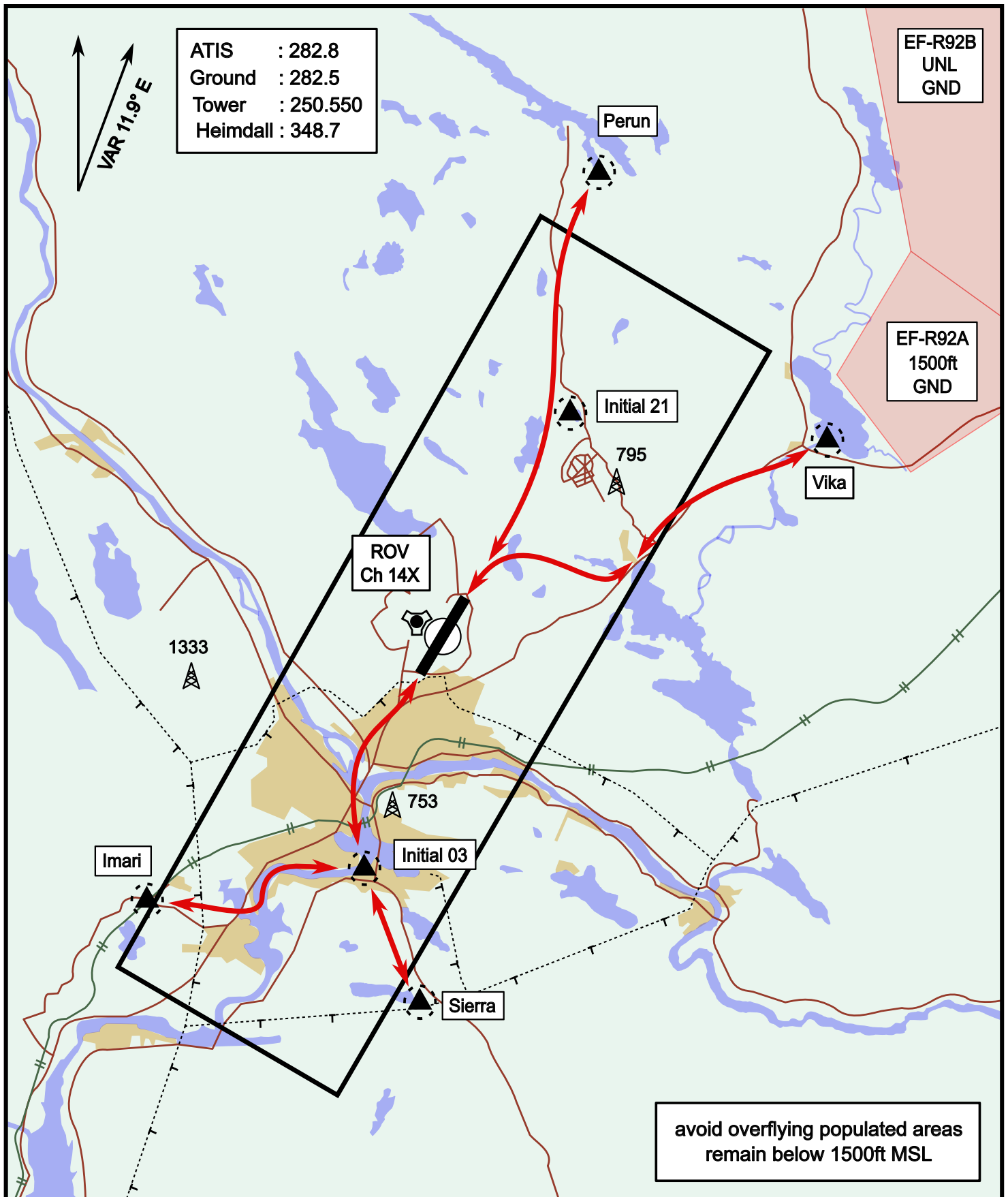


Vika	N66° 37.474 / E026° 13.557	Sierra	N66° 25.711 / E025° 46.610
Perun	N66° 44.135 / E026° 01.630	Imari	N66° 28.406 / E025° 31.291
Initial21	N66° 38.421 / E025° 58.682	Initial03	N66° 28.793 / E025° 44.105

Helicopter Routing

elev 643 ft

Rovaniemi, Finland



Vika	N66° 37.474 / E026° 13.557	Sierra	N66° 25.711 / E025° 46.610
Perun	N66° 44.135 / E026° 01.630	Imari	N66° 28.406 / E025° 31.291
Initial21	N66° 38.421 / E025° 58.682	Initial03	N66° 28.793 / E025° 44.105