

MISSION DATA CARD

OPORD		Callsign	Mission	Date/Time		
3711/2025		Monster 1	Strike	062000MAR25		
Task	Strike SCUD				Freq	
AO	Static 3				132.15	
Departure			Recovery			
SID RWY 03			ILS RWY 21			
#	Callsign	Pilot	IFF	TCN	LSR	NET
-1	Monster 1-1	Toolface	1411	1Y	1611	21/01
-2	Monster 1-2	Lenzi	1412	64Y	1612	21/02
-3	Monster 1-3	addiks	1413	64X	1613	21/03
-4	Monster 1-4	Marsy	1414	1X	1614	21/04

LOADOUT

A/A	2xA9L	GUN	100% CM
A/G	4xG38, 7M257	CHF	240
POD	TGP, A184L	FLR	240
TKS		FUEL	100%

TOLD

	Takeoff	Target	Joker	Bingo	Land
FUEL	11087				

AIRBASES

	Name	TCN	ATIS	GND	TWR	RWY	Elev	ILS
Dep	Rovaniemi	14X	282.8	282.5	250.55	21	643	111.7
Arr	Rovaniemi	14X	282.8	282.5	250.55	21	643	111.7

FLIGHTPLAN

#	Name	Navaid/Coords/DME	ALT	TOT
1	RVNInit03	N66 28.793 E025 44.105	0	
2	IMARI	N66 28.406 E025 31.291	0	
3	XALPHA	N66 34.734 E023 01.488	0	
4	XBRAVO	N66 34.653 E023 01.126	0	
5	XCHARLY	N66 34.795 E023 01.804	0	
6	XDELTA	N66 34.910 E023	0	
7	XFOX	N66 35.140 E023 00.800	0	
8	XECHO	N66 35.005 E023 00.611	0	
9	XGOLF	N66 35 E023 01.045	0	
10	XHOTEL	N66 35.500 E023 00.600	0	
11	XINDIA	N66 34.650 E023 01.133	0	
12	PERUN	N66 44.135 E026 01.630	0	
13	RVNInit21	N66 38.642 E025 58.682	0	

COMMS

Radio	Usage
1	132.15
2	2, 4, 16, 2, 4
3	32,00

OTHER FLIGHTS

Callsign	Mission	Airframe	Freq	TCN	Grpld	Laser
Raptor 1	Training	4x F-16C	134.0	1/64		162X
AO	KOLA	Task	IFR			
Raptor 2	Training	4x F-16C	134.0	1/64		162X
AO	KOLA	Task	IFR			
Tiger 4	Training	4x F/A-18C	261.15	1/64		155X
AO		Task	BVR 2 on 2			
Rattler 4	Training	4x AH-64D	133.5	1/64		125X
AO		Task				

RADIO CHANNELS

#	Freq	Name
1		Flight/Squadron specific
2	282.8	Rovaniemi ATIS
3	282.5	Rovaniemi Ground
4	250.55	Rovaniemi Tower
5	320.7	Bodo ATIS
6	250.75	Bodo Tower
7	235.45	Kallax ATIS
8	250.3	Kallax Tower
9	265.0	Texaco-1 KC-135 Medium / Slow 71Y
10	319.8	Arco-1 KC-135 High / Fast 22Y
11	360.8	Shell-1 KC-135 MPRS High / Fast 41Y
12	304.0	CVN-71 Rough Rider (RRR) 71X
13	303.0	LHA-1 Tarawa (TWA) 79X
14	247.8	S-3B Mauler-1 (MAU) 64Y
15	347.8	Loki (E-2D)
16	348.7	Heimdall (E-3A)
17	242.17	ESR02 - CAS Range Operator
18	34.7	ESR02 - JTAC Odin
19	270.5	Blue
20	270.75	Red

RAMROD

0	1	2	3	4	5	6	7	8	9
L	Y	M	P	H	A	T	I	C	S

KTC 1400 C

	0	1	2	3	4	5	6	7	8	9
A	AUHK	VEO	BIF	MY	NP	JDL	RS	TQ	XG	WC
B	BVEU	IDS	KWQ	RL	FG	OJC	TN	MX	HA	YP
C	XAYF	NPG	HDQ	SM	EB	KIL	VU	JO	CT	WR
D	QPAG	FST	ICY	KU	WH	DML	OB	EJ	NX	RV
E	XLOD	YIU	CTN	RF	KM	HQE	SA	PJ	GW	VB
F	TMNC	EYS	JQW	DH	BL	VOA	IR	PX	UG	KF
G	SBPN	XDQ	OET	WY	LR	IUJ	CM	GF	KH	VA
H	FHTR	KJG	VUI	EC	DS	YMO	AL	NW	QP	XB
I	HLBT	VKD	WUX	OY	CS	IEN	GP	RF	JQ	AM
J	AKPU	FWG	JYN	EH	LD	IBV	XO	MQ	TS	CR
K	DRTA	KNC	EGV	JO	SX	YUL	QH	IB	WF	MP
L	APFM	YBD	KJI	XN	QV	EWR	UL	HO	GT	SC
M	REQF	GLV	WXT	IY	MH	OPS	NB	KJ	DC	UA
N	VCYF	JUH	MNK	QA	GE	DXT	SP	RO	IL	BW
O	JKHG	MDR	TVI	BS	EY	UPQ	ON	AC	FW	XL
P	MKIY	TOX	QNF	HD	WS	EGP	UB	LR	JC	AV
Q	BHQI	NPS	FXY	JE	WM	CRA	KU	TG	VD	LO
R	FASB	WVK	QGL	XO	IJ	DME	RU	HY	TN	PC
S	HXUN	EMI	CGW	LR	VQ	AYF	OD	KP	TB	SJ
T	TXHU	BPO	CFG	WY	QI	MEJ	SN	VA	KL	DR
U	CANI	EXR	BMP	QJ	KH	FDO	TY	GL	UW	SV
V	VJUY	XMD	IAL	GE	TB	CHP	NR	FS	KO	WQ
W	NCKR	YWD	UFE	BX	JV	IPL	OH	MS	TG	QA
X	BMRH	AFU	JIY	EN	LG	QDP	CT	OK	XW	SV
Y	THOY	KSI	VUL	NC	JW	GFA	ME	XB	RP	QD

NAVAIDS

Id	Name	Channel	Position	Elevation
BOO	Bodo	45	N67 15.838 E014 20.046	43
BNK	Banak	47	N70 03.937 E024 58.181	17
OYA	Andoya	28	N69 17.175 E016 08.658	19

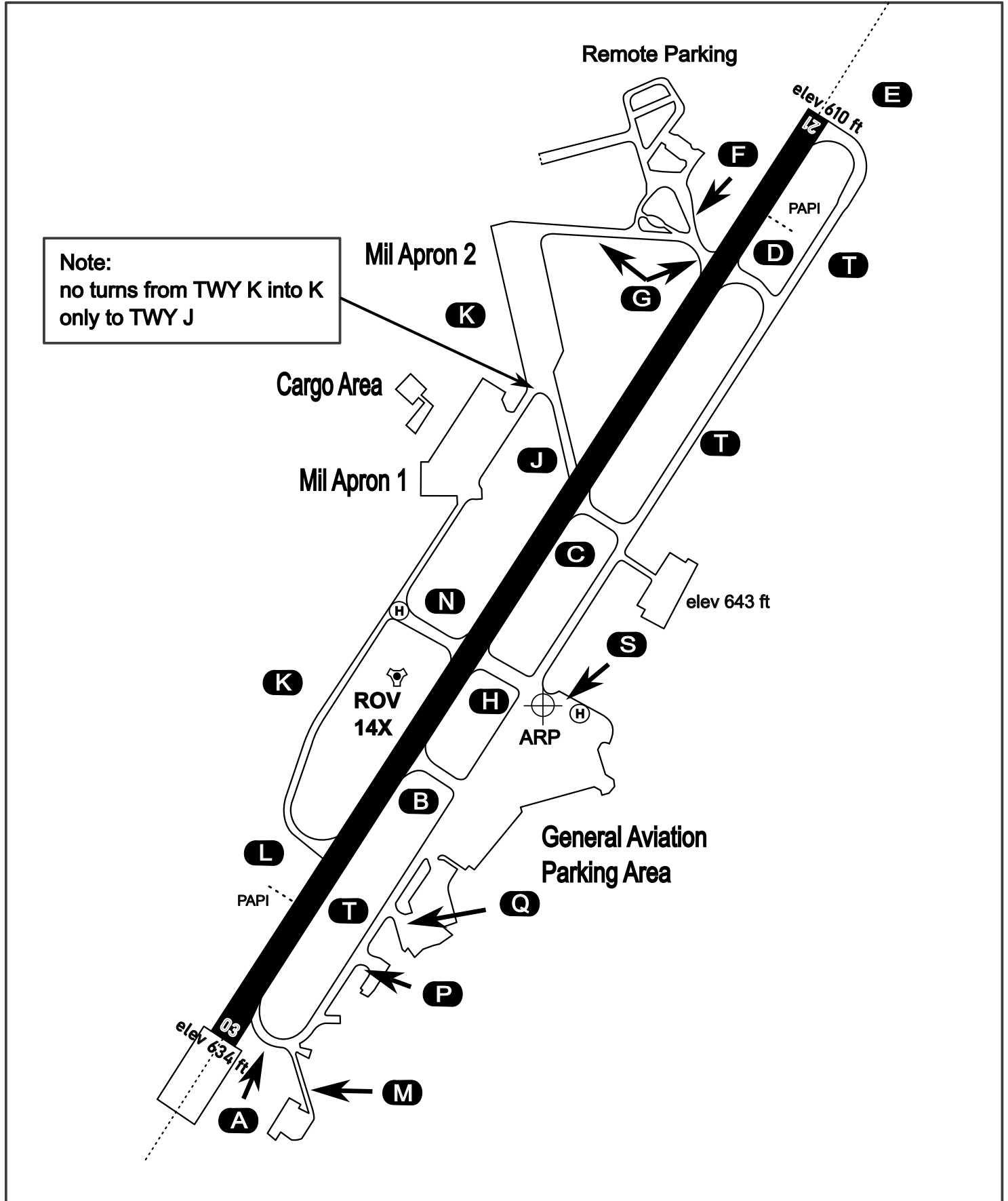
AERODROME CHART

Rovaniemi Aerodrome

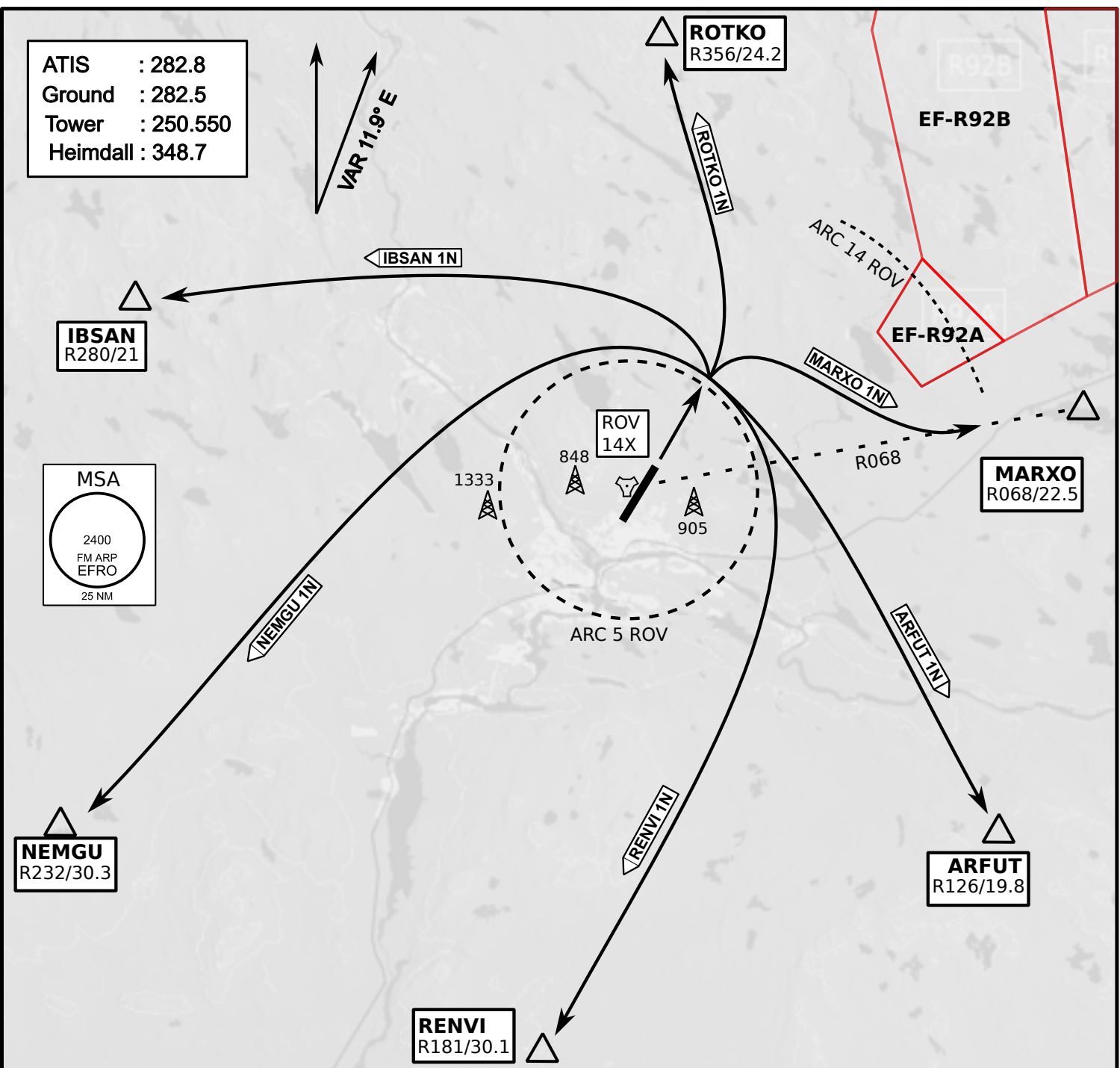
ARP N66° 33' 42" E025° 49' 51"

elev 643 ft

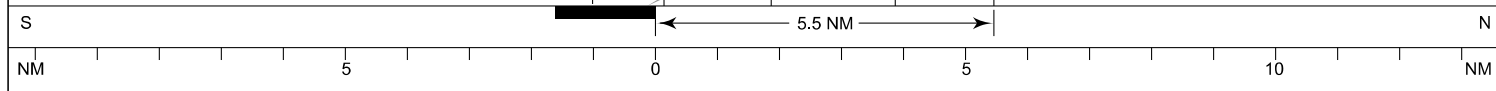
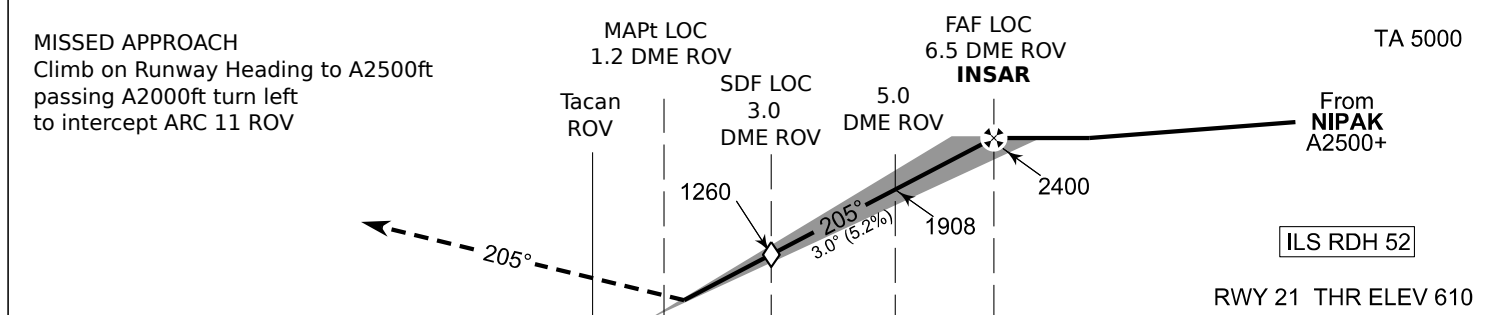
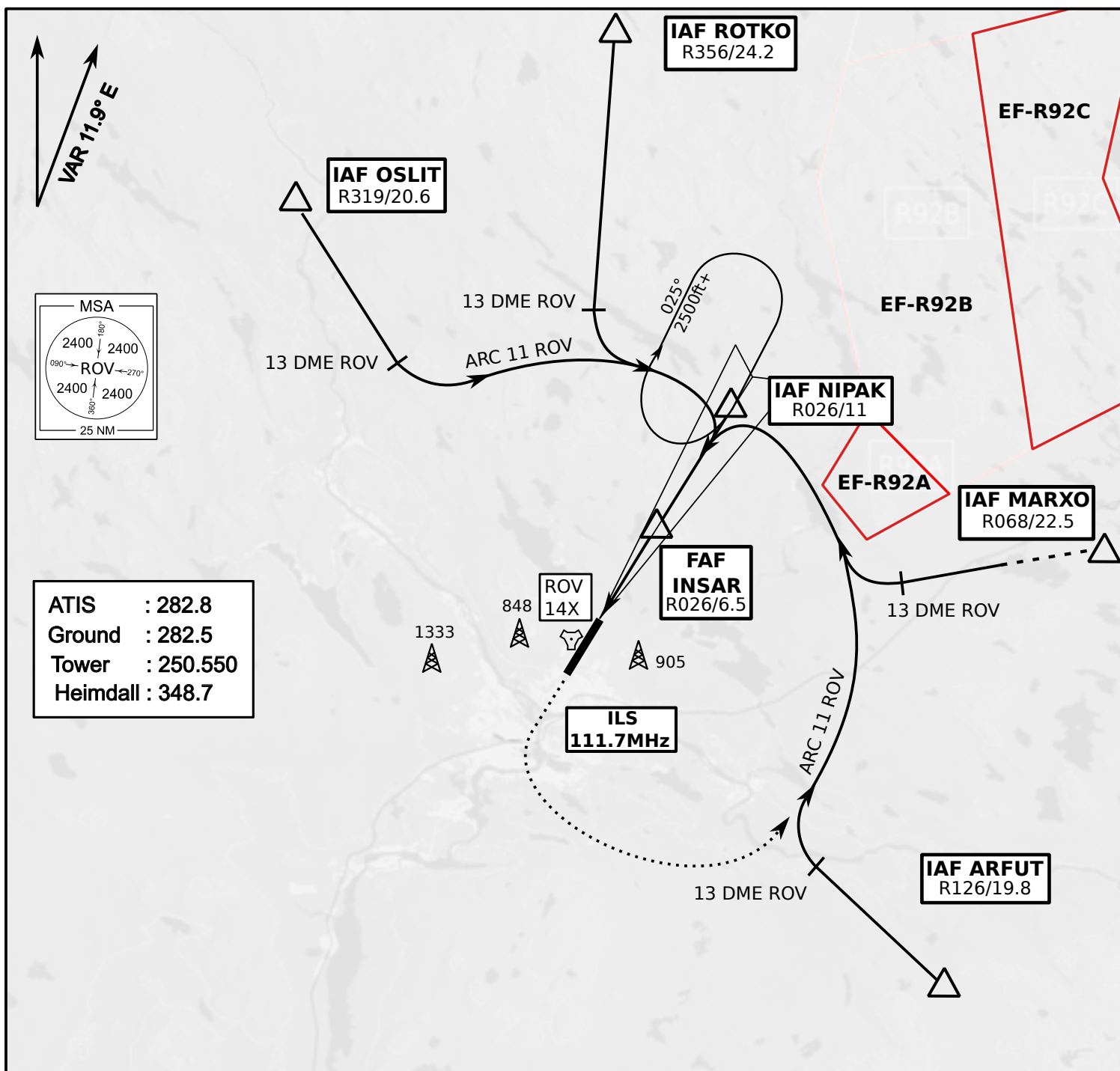
ROVANIEMI, FINLAND



ATIS	Ground	Tower	Radar
282.800	282.500	250.550	348.700



- Climb on Rwy heading to min A2000ft
- when passing A2000ft OR 5 DME ROV (whichever is later) turn to exit point
- Stay outside ARC 5 ROV
- if EF-R92B is active :
intercept R068 ROV inside 14 DME ROV to MARXO
- AB usage only if necessary for flight safety



OCA (H)	A	B	C	D
ILS CAT I	773 (164)	784 (175)	795 (186)	809 (200)
LOC	930 (320)			
LOC WO SDF	1260 (650)			
Circling	1120 (470)	1150 (510)	1300 (660)	1340 (690)

	kt	90	100	120	140	160
FAF - MAPt 5.4 NM	min:sec	3:36	3:14	2:42	2:19	2:01
Rate of descent	ft/min	480	530	640	740	850

Timing not authorized for defining the MAPt