

**MISSION DATA CARD**

OPORD		Callsign		Mission		Date/Time		
3707/2025		Monster 4		Training		032000MAR25		
Task	CBU TRAINING					Freq		
AO	ESR03					132.15		
Departure				Recovery				
VFR Departure				VFR Approach				
#	Callsign		Pilot		IFF	TCN	LSR	NET
-1	Monster 4-1		Lenzi		1511	1Y	1441	04/01

**LOADOUT**

A/A	A9M				GUN	100% CM	
A/G	7M282L, 4xG38				CHF	0	
POD	A184, TGP				FLR	480	
TKS					FUEL	100%	

**TOLD**

	Takeoff	Target	Joker	Bingo	Land
FUEL	11087				

**AIRBASES**

	Name	TCN	ATIS	GND	TWR	RWY	Elev	ILS
Dep	Rovaniemi	14X	282.8	282.5	250.55	21	643	111.7
Arr	Rovaniemi	14X	282.8	282.5	250.55	21	643	111.7

**FLIGHTPLAN**

#	Name	Navaid/Coords/DME	ALT	TOT
1	IMARI	N66 28.406 E025 31.291		
2	PERUN	N66 44.135 E026 01.630		
3	HOLDING	N66 27.265 E023	12000	
4	STATIC3	N66 35.028 E023 00.852		
5	IMARI	N66 28.406 E025 31.291		
6	SIERRA	N66 25.711 E025 46.610		
7	RVNInit03	N66 28.793 E025 44.105		
8	PERUN	N66 44.135 E026 01.630		
9	VIKA	N66 37.474 E026 13.557		
10	RVNInit21	N66 38.642 E025 58.682		

**COMMS**

Radio	Usage
1	132.15
2	2-4-16-2-4
3	32.00

## NOTES

Departure via IMARI (RW21) oder PERUN (RW03).  
HOLDING im Norden von ESR03.  
Aufklärung SCUD Launcher

## OTHER FLIGHTS

Callsign	Mission	Airframe	Freq	TCN	Grpld	Laser
Rattler 7	Training	4x AH-64D	133.5	1/64		125X
AO		Task				
Tiger 1	Training	4x F/A-18C	261.15	1/64	1	155X
AO	ESR01	Task	SEAD / DEAD			
Nazgul 6	Training	4x F-15E	262.45	1/64		156X
AO		Task	Training			
Monster 1	Training	1x A-10C	132.15	1/64	21	161X
AO	ESR03	Task	CBU TRAINING			
T-Rex 1	Training	1x A-10C	131.15	1/64	25	164X
AO	ESR03	Task	CBU TRAINING			
Panther 1	Training	4x F/A-18C	261.35	1/64		157X
AO		Task	Case III Training			
Raptor	Training	1x F-16C	134.0	1/64		162X
AO		Task				

## RADIO CHANNELS

#	Freq	Name
1		Flight/Squadron specific
2	282.8	Rovaniemi ATIS
3	282.5	Rovaniemi Ground
4	250.55	Rovaniemi Tower
5	320.7	Bodo ATIS
6	250.75	Bodo Tower
7	235.45	Kallax ATIS
8	250.3	Kallax Tower
9	265.0	Texaco-1   KC-135   Medium / Slow   71Y
10	319.8	Arco-1   KC-135   High / Fast   22Y
11	360.8	Shell-1   KC-135 MPRS   High / Fast   41Y
12	304.0	CVN-71 Rough Rider (RRR)   71X
13	303.0	LHA-1 Tarawa (TWA)   79X
14	247.8	S-3B Mauler-1 (MAU)  64Y
15	347.8	Loki (E-2D)
16	348.7	Heimdall (E-3A)
17	242.17	ESR02 - CAS Range Operator
18	34.7	ESR02 - JTAC Odin
19	270.5	Blue
20	270.75	Red

**RAMROD**

0	1	2	3	4	5	6	7	8	9
C	O	N	J	U	G	A	T	E	S

**KTC 1400 C**

	0	1	2	3	4	5	6	7	8	9
A	LVKU	HFP	DOX	NR	BW	JTA	YS	EM	CQ	IG
B	EHGS	PKV	CYB	TM	UX	AOD	NW	FL	RI	JQ
C	YTGH	BQI	UEV	RJ	KX	SFP	MW	CO	LA	DN
D	IPSO	ADV	WLJ	RE	TX	NHK	CM	UQ	FB	YG
E	WNDP	LMI	TAO	QE	XJ	YHB	SV	UC	KF	RG
F	JWYX	CEU	NRM	IT	BL	PGS	AV	OK	QH	FD
G	BWKX	ENA	ISF	LR	TD	PYJ	HO	QG	VC	MU
H	UBFV	EJP	LTM	NG	SI	DHK	YC	WX	QR	AO
I	PLIR	NHJ	FVD	TE	AO	BKQ	WY	CG	XM	US
J	CENA	YLV	KSR	JD	BQ	FMT	UW	XH	IP	OG
K	OQIH	EVC	PLU	TN	MB	GDF	RX	WJ	KA	YS
L	GPED	NWB	MOI	QK	UJ	CTY	VS	FL	AX	RH
M	HGFB	NLW	RVE	XA	QP	TKD	US	IJ	MC	YO
N	ORUP	GTN	EBI	JK	DX	CQH	LS	WM	FV	YA
O	MBPQ	EFN	YIG	OC	SJ	KLU	HX	DW	RV	TA
P	FPMN	LSE	HGK	BO	XD	VJQ	YC	UA	RT	IW
Q	IRQE	TLK	CMP	BS	AV	JOX	WD	FH	YN	GU
R	PJQI	ESH	YAT	XR	FN	VMB	OK	LD	CW	UG
S	MJRQ	PCT	SYX	EI	DA	NVK	FG	HL	WB	UO
T	NOTP	BSK	GFA	CJ	WR	LQY	ED	VU	XH	MI
U	BTOA	LJG	KNR	UY	DW	VSE	PX	CQ	FM	HI
V	HFUK	DVE	LSA	OI	YJ	GRC	QX	TN	BW	MP
W	DEBP	HST	LMA	XR	FK	WNI	YU	VC	OQ	JG
X	KPBF	LND	WHY	JX	SV	RAC	UQ	EO	GT	MI
Y	CGFI	RUB	DYE	SA	PL	QNO	KW	HV	MT	XJ

**NAVAIDS**

Id	Name	Channel	Position	Elevation
BOO	Bodo	45	N67 15.838 E014 20.046	43
BNK	Banak	47	N70 03.937 E024 58.181	17
OYA	Andoya	28	N69 17.175 E016 08.658	19

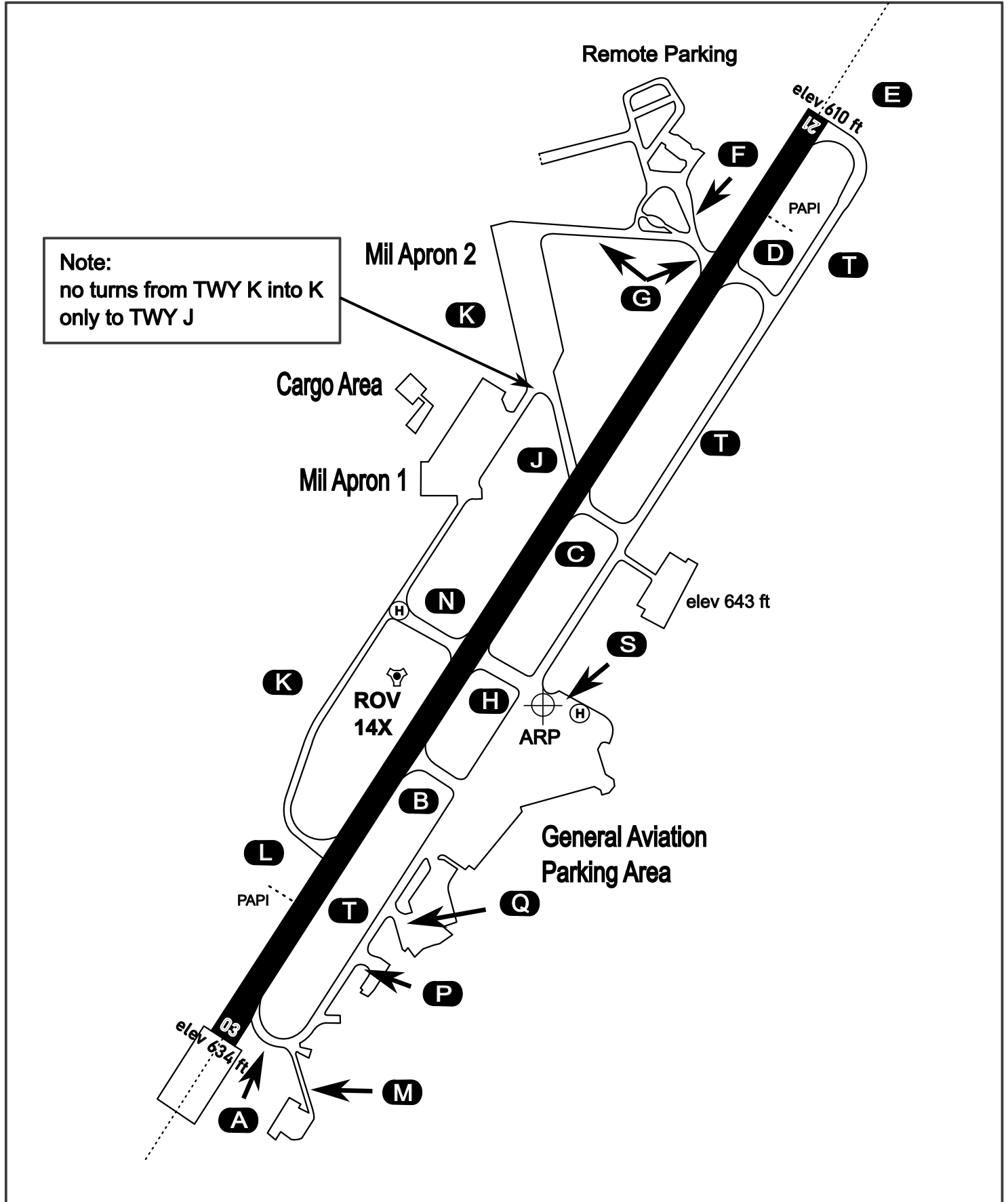
# AERODROME CHART

Rovaniemi Aerodrome

ARP N66° 33' 42" E025° 49' 51"

elev 643 ft

## ROVANIEMI, FINLAND



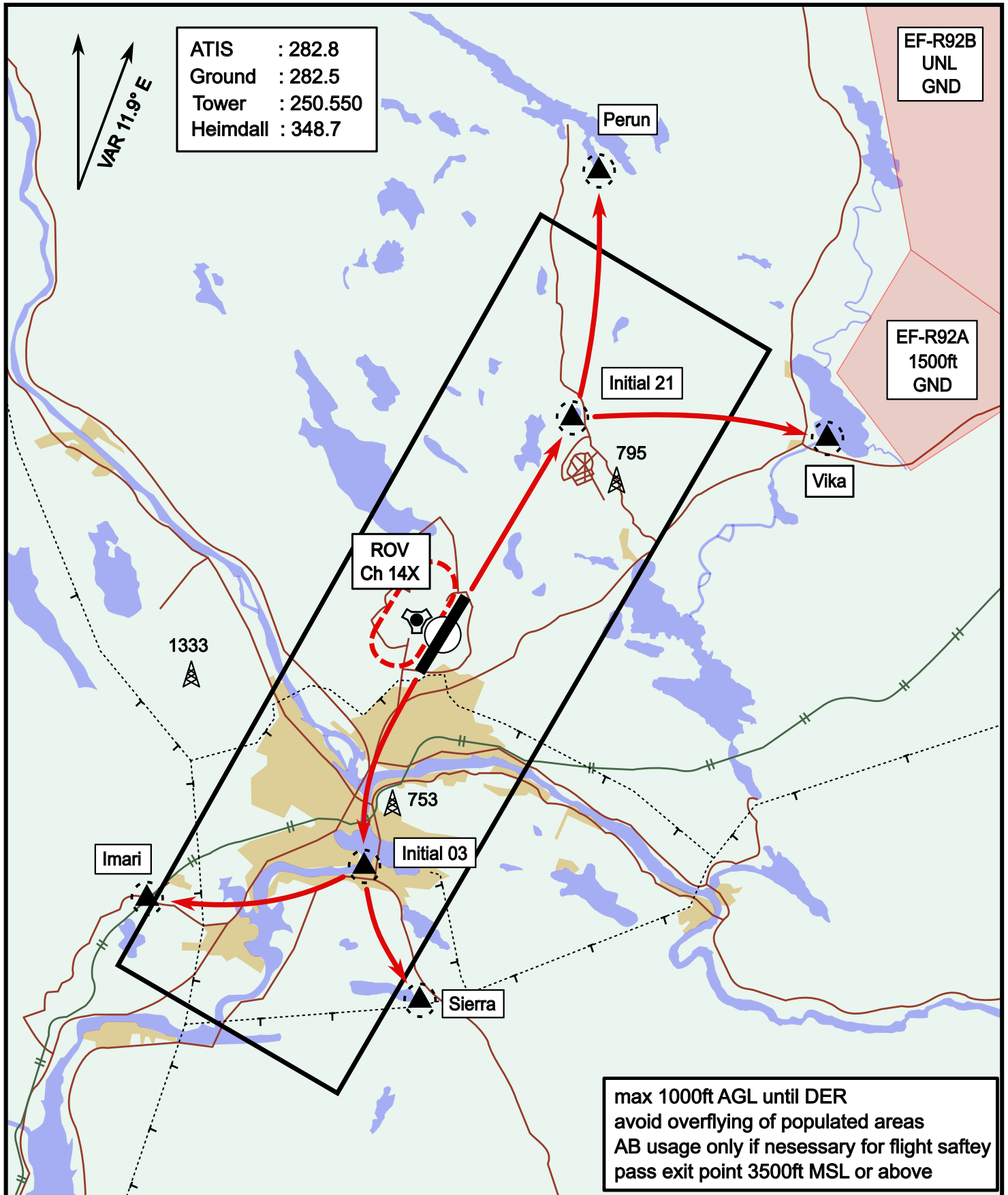
ATIS	Ground	Tower	Radar
282.800	282.500	250.550	348.700



# Visual Departure Jet

elev 643 ft

# Rovaniemi, Finland

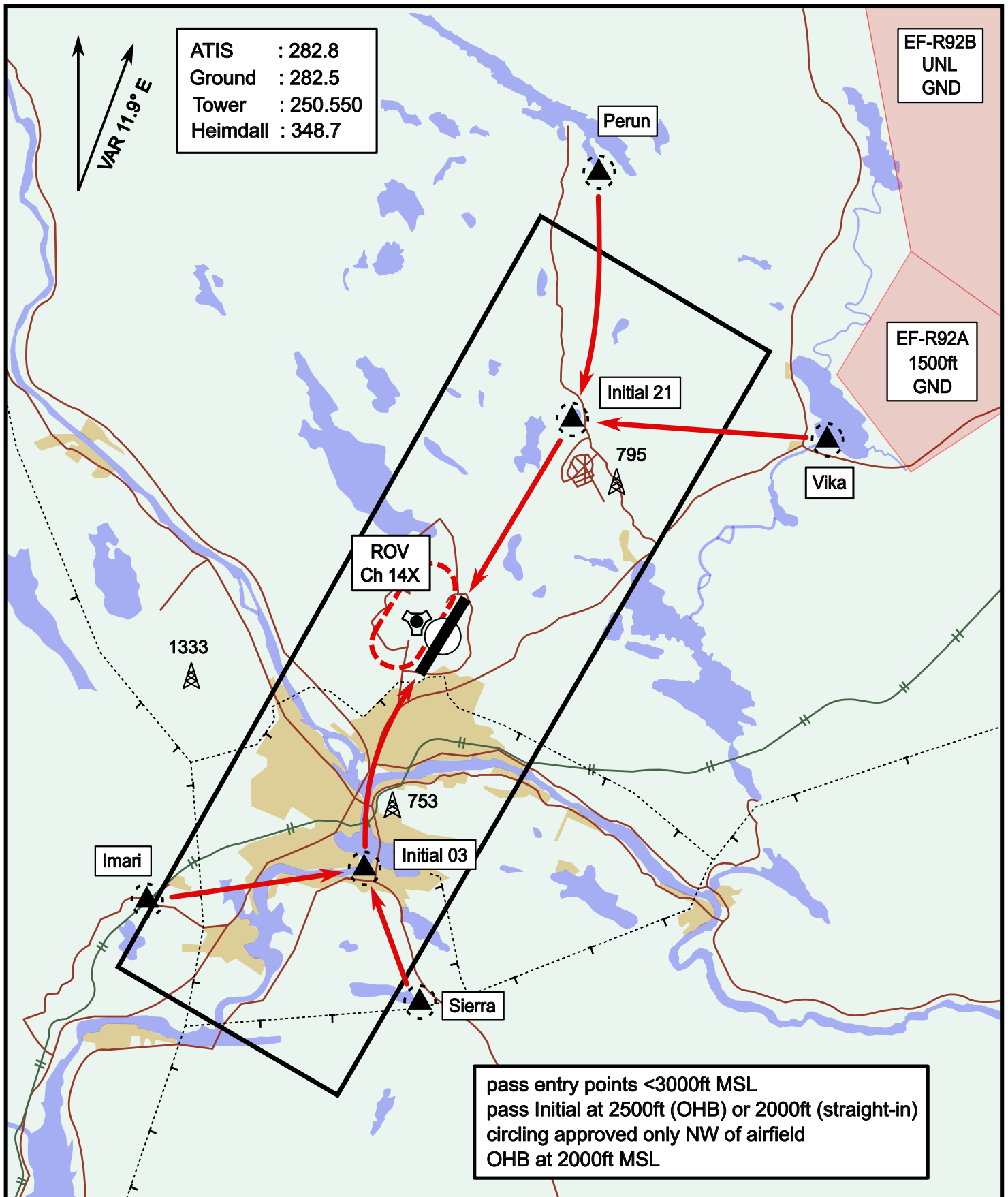


Vika	N66° 37.474 / E026° 13.557	Sierra	N66° 25.711 / E025° 46.610
Perun	N66° 44.135 / E026° 01.630	Imari	N66° 28.406 / E025° 31.291
Initial21	N66° 38.421 / E025° 58.682	Initial03	N66° 28.793 / E025° 44.105

# Visual Approach Jet

elev 643 ft

# Rovaniemi, Finland



Vika	N66° 37.474 / E026° 13.557	Sierra	N66° 25.711 / E025° 46.610
Perun	N66° 44.135 / E026° 01.630	Imari	N66° 28.406 / E025° 31.291
Initial21	N66° 38.421 / E025° 58.682	Initial03	N66° 28.793 / E025° 44.105