

MISSION DATA CARD

OPORD		Callsign		Mission		Date/Time	
3704/2025		Tiger 1		DEAD		141900MAR25	
Task	ATO 1050 DEAD					Freq	
AO	Al Safira 260B280					261.15	
Departure				Recovery			
CAT				CASE I			
#	Callsign	Pilot		IFF	TCN	LSR	NET
-1	Tiger 1-1	Ghost		1011	1Y	1551	01/01
-2	Tiger 1-2	Jemi		1012	64Y	1552	01/02
-3	Tiger 1-3	Cloud		1013	64X	1553	01/03

LOADOUT

A/A	2xA9X, A120C				GUN	100% HEI-T
A/G	4xG38				CHF	90
POD	TGP				FLR	30
TKS	2xFPU-8A				FUEL	100%

TOLD

	Takeoff	Target	Joker	Bingo	Land
FUEL	15291	8000		6000	2000

AIRBASES

	Name	TCN	ATIS	GND	TWR	RWY	Elev	ILS
Dep	CVN-73 USS G. Washington	55X		ICLS 12	304.0			
Arr	CVN-73 USS G. Washington	55X		ICLS 12	304.0			
Div	Incirlik AFB	21X	377.47 5	371.35	360.1	5	190	

FLIGHTPLAN

#	Name	Navaid/Coords/DME	ALT	TOT
1	ReGrroup	N37 04 43.603 E036 28 38.662	23000	
2	Hold	N36 58 13.841 E037 12 50.426	27000	
3	IP	N36 23 00.054 E037 31 00.628	27000	
4	TGT SA2	N36 04 14.066 E037 20 28.625	1224	
5	TGT AAA	N36 02 37.894 E037 20 23.681	1509	
6	Fence Out	N36 57 45.501 E037 12 37.955	27000	
7	RTB	N36 53 44.440 E036 14 36.263	23000	
8	CVN73	N35 52 05.218 E034 01 04.193	500	

COMMS

Radio	Usage
1	4(CVN), 12 (OV), 8/9(Shell), 12(OV), 4(CVN)
2	MIDS A:1 / B:44 Tiger
3	MIDS A:9 / B:44 Lion
4	Shell 1 248.8 (12Y) / Shell 2 249.8 (13Y)

NOTES

ATO#: 1050[?]
STATUS:
CLSGN: Tiger 1
SLOT: Tiger 1
PCKGE:
A/F: CVN-73
DIVERT: Incirlik[?]
MSN: DEAD
AC: F/A-18C
MIN/MAX: 2/4
AO: AL-Safirah
AOR:
INGRESS/EGRESS: via CW
CLEARANCE: By SEAD Raptor-1
STP-TIME:
T/O: STP+
CAT: 1 - 4
TOT: STP+
VUL: DEAD & Strike Push nachdem SA-2 suppressed
ALTBL: 260B280

Raptor-1 130.5 (SEAD)
Tiger-1[?]MIDS 1 (DEAD)
Lion-2[?]MIDS 9 (STRIKE)
Raptor-3 130.7 (STRIKE)
Overlord 377.8 (AWACS)
Wizard 355.6 (GROUND)
Texaco 1 248.7 (11Y) (AAR)
Shell 1[?]48.8 (12Y) (AAR MPRS)
Shell 2[?]49.8 (13Y) (AAR MPRS)
ALR: MED

Threats AO 1050:
Ground: SA-2, SA-3, AAA
Air: MiG-21, MiG-25

Weather:
Time : 24.08.2013, 05:30 lcl / 03:30Z
Clouds : Light SCT / BKN 13780ft
Wind : 0ft 6/239 , 1600ft 14/2390 , 6600ft 14/218 , 26000ft 22/254
QNH: 3001

SUPPORT**AWACS**

Callsign	Freq	ALT	Pos
OVERLORD2	377.8	FL320	N3713 E03643 - N3714 E03749

OTHER FLIGHTS

Callsign	Mission	Airframe	Freq	TCN	Grpld	Laser
Nazgul 1	Strike	4x F-15E	131.65	1/64		156X
AO	Syria	Task	ATO 1030 - Southern Target			
Joker* 1	Transport	4x CH-47F	133.75	1/64		170X
AO		Task				
Raptor 1	SEAD	4x F-16C	130.5	1/64		162X
AO	Al Safira	Task	ATO 1050 SEAD			
Knight* 6	Strike	4x F/A-18C	264.05	1/64		170X
AO	Aleppo	Task	ATO1010			
Rattler 5	Training	4x AH-64D	133.5	1/64		125X
AO	ATO 1020	Task	CAS			
Raptor 3	Strike	2x F-16C	130.7	5/68		169X
AO	Al Safira	Task	ATO 1050 STRIKE			
Raptor 7	Training	4x F-16C	129.3	1/64		170X
AO	Mako 6	Task	ATO 1060			
Devil* 4	CAS	4x A-10C	132.55	1/64		164X
AO	Minakh AB	Task	ATO 1020 CAS			
Monster 1	CAS	4x A-10C	132.15	16/79	21	161X
AO	Minakh Airfield	Task	Air Assault Minakh Airfield			
Panther 3	Training	4x F/A-18C	261.35	1/64		157X
AO	ATO1010	Task	SEAD			

RADIO CHANNELS

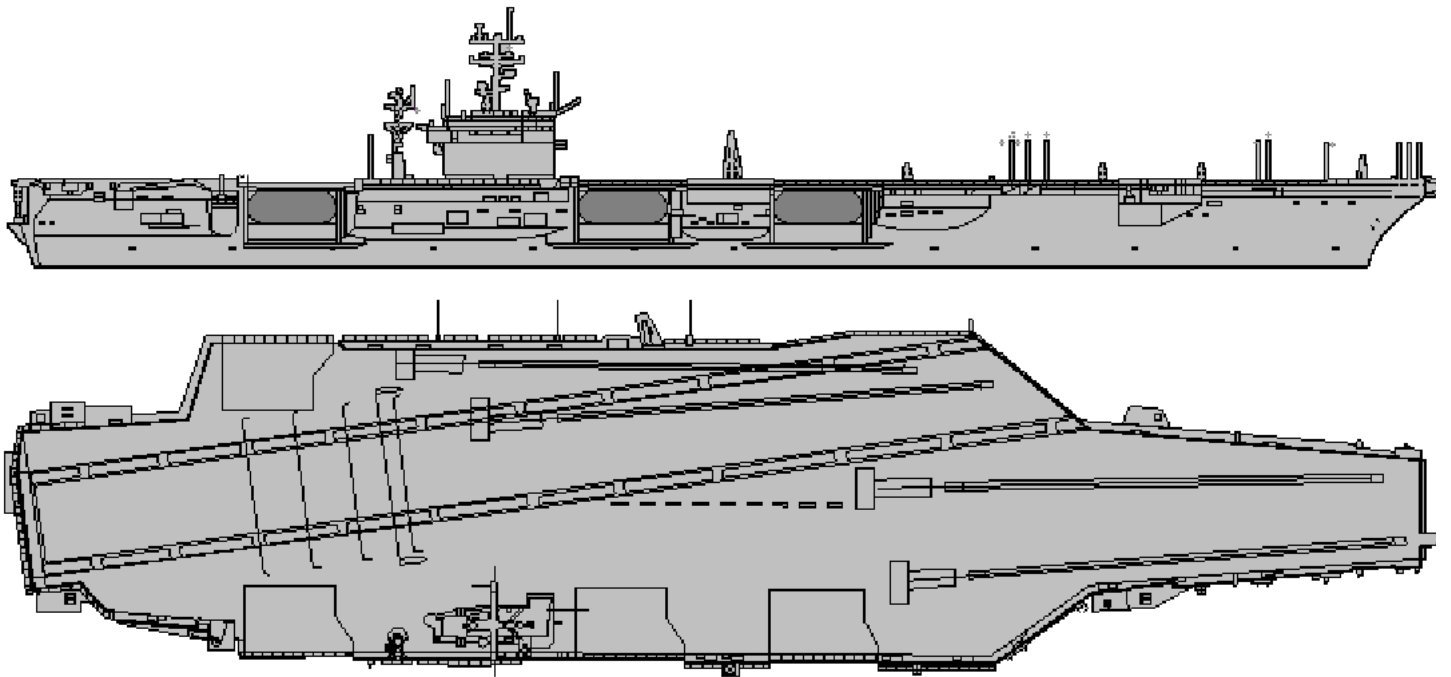
#	Freq	Name
1		Flight/Squadron specific
2	288.2	Akrotiri ATIS
3	240.1	Akrotiri Ground
4	339.85	Aktrotiri Tower
5	335.05	Akrotiri Approach
6	360.1	Incirlik Tower
7	371.35	Incirlik Ground
8	377.475	Incirlik ATIS
9		No Preset
10	127.3	Paphos ATIS
11	353.8	Paphos Tower
12	304.0	CVN-73 George Washington
13	302.0	LHA-1 Tarawa
14	259.0	CV-59 Forrestal
15		No Preset
16	377.8	Overlord
17	265.0	KC-135 Texaco-1 medium/slow
18	319.8	KC-135 Arco-1
19	360.8	KC-135MPRS Arco-2
20	256.0	S-3B Recovery Tanker

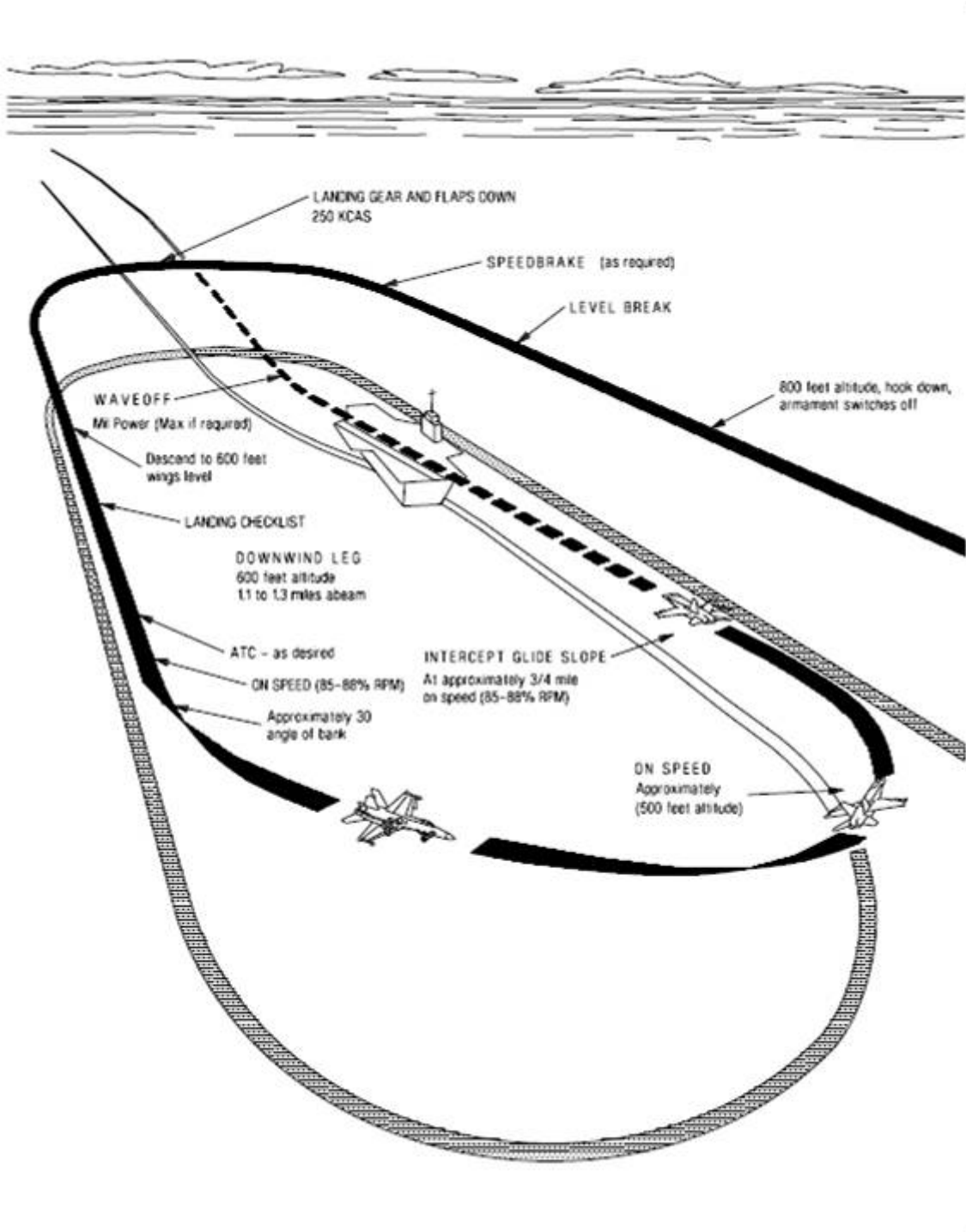
RAMROD										
0	1	2	3	4	5	6	7	8	9	
H	A	R	M	O	N	I	Z	E	D	
KTC 1400 C										
	0	1	2	3	4	5	6	7	8	9
A	TBDY	AVR	XPJ	GQ	UE	MWO	HN	CS	LF	KI
B	ASJQ	FKB	RIU	GW	HO	EVX	LM	NT	CP	YD
C	THXB	YUK	PLS	MG	DW	QAR	EV	IF	CO	JN
D	AOBG	RSW	KUH	LJ	DC	IQN	PM	XT	VY	FE
E	PEBF	JVX	KQL	CN	TW	OGY	AH	UR	SI	DM
F	YPXL	MNK	FWA	QS	IE	DTB	HU	VR	JG	CO
G	MLJR	KCQ	EUT	YB	PI	HXW	GA	FS	DV	NO
H	IHQU	JYT	BVC	RP	GE	MDF	LO	SX	NW	AK
I	NKBH	IDE	YTS	XU	WV	RJF	MG	LP	OQ	CA
J	OPQK	IHN	RJB	MU	WD	CEA	LY	VS	GT	XF
K	UOEY	GFX	PRH	QK	SI	BDJ	CN	VW	LT	AM
L	KBRG	WFS	UXL	VO	EC	PDM	YA	HQ	NI	TJ
M	GLHO	MKU	SCW	VP	ED	QRB	FY	TJ	IN	AX
N	KYEH	BUC	MTO	XG	VS	WPL	IN	FD	QR	JA
O	UNPA	KQR	TJW	HD	YG	FLM	OI	VC	SB	EX
P	YCSO	LGW	QBE	FT	MX	DUK	JA	HV	IP	RN
Q	WDCS	QVY	UPT	BI	XK	GOR	HJ	NE	FA	ML
R	CIYJ	DGV	BUQ	NH	OE	APF	SL	RM	TX	WK
S	KPGF	OIU	TQY	DL	XH	CWA	EJ	BM	RS	NV
T	IHPL	WAT	XMG	QC	JB	EOK	UF	RN	SV	YD
U	IRHL	USD	KCY	OG	FW	XME	VN	QA	TB	PJ
V	JISG	AWX	OBU	TH	LK	MYF	RQ	EV	DP	CN
W	TEXD	RNF	KGQ	JU	MV	IAC	LP	WO	SH	BY
X	TOGA	SWM	HIL	YQ	FN	EUC	PB	JX	RD	KV
Y	JXYT	IEB	NRH	GP	WL	UMO	SQ	FV	KA	DC

NAVAIDS

Id	Name	Channel	Position	Elevation
DAN	Incirlik	21	N37 00.950 E035 26.883	243
AKR	Akrotiri	107	N34 34.765 E032 57.769	147
PHA	Paphos	79	N34 42.997 E032 28.963	35
RMD	Ramat David	84	N32 39.892 E035 11.265	136
OS66	Kuweires Military Aviation Institute	36	N36 11.362 E037 34.226	1200







ATIS
377.475 (#8)

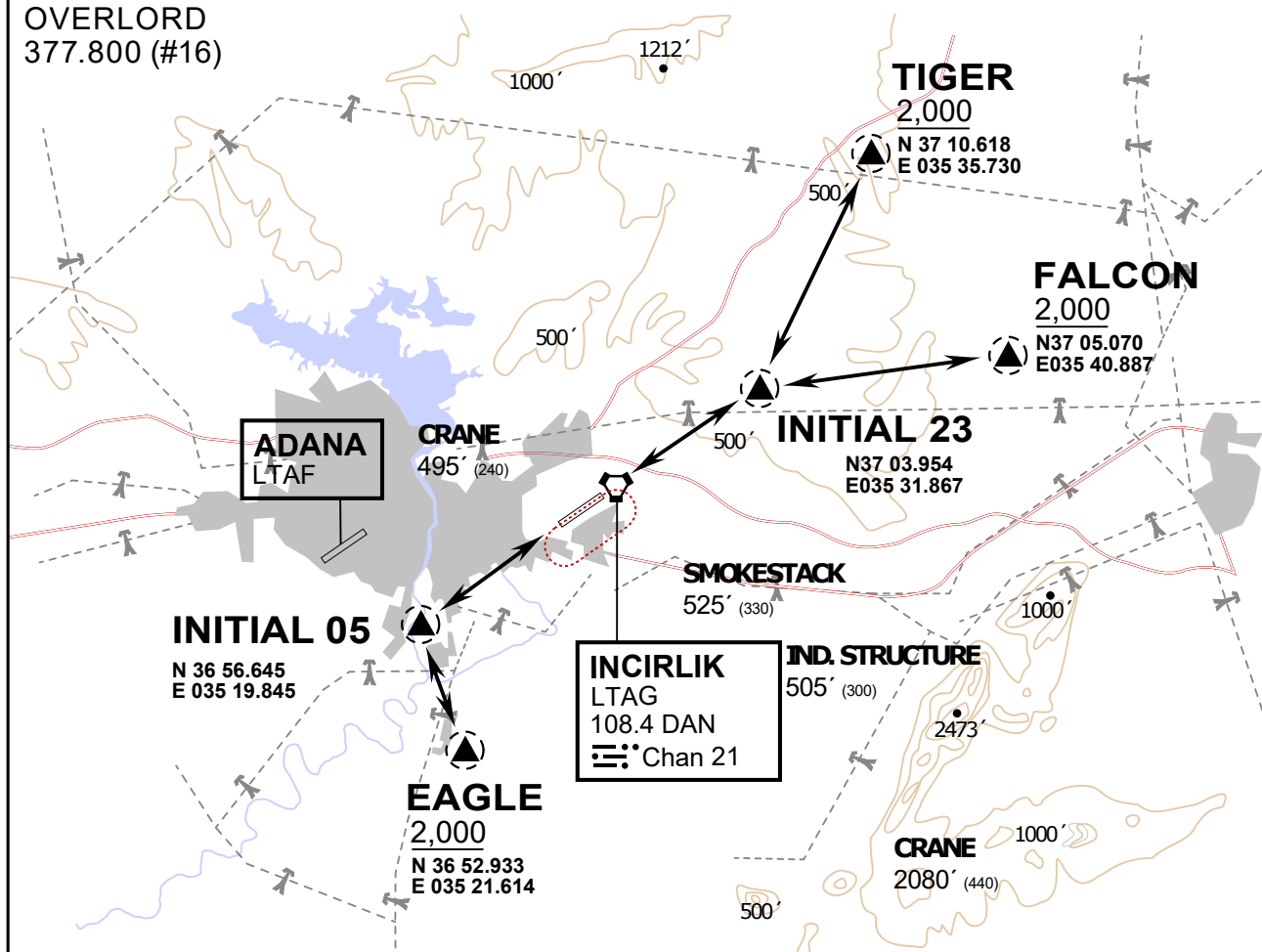
INCIRLIK GROUND
371.3500 (#7)

INCIRLIK TOWER
360.100 (#6)

OVERLORD
377.800 (#16)

NOT FOR CIVIL USE

CAUTION: If unable to comply
with restrictions advise ATC
prior to departure.



vJaBoG32 ETTR NAV CHART



ARR / DEP ROUTE DESCRIPTION

STRAIGHT-IN RWY 05 / 23

Pass entry EAGLE / TIGER / FALCON at 2000' and INITIAL at 1500'

OVERHEAD BREAK RWY 05 / 23

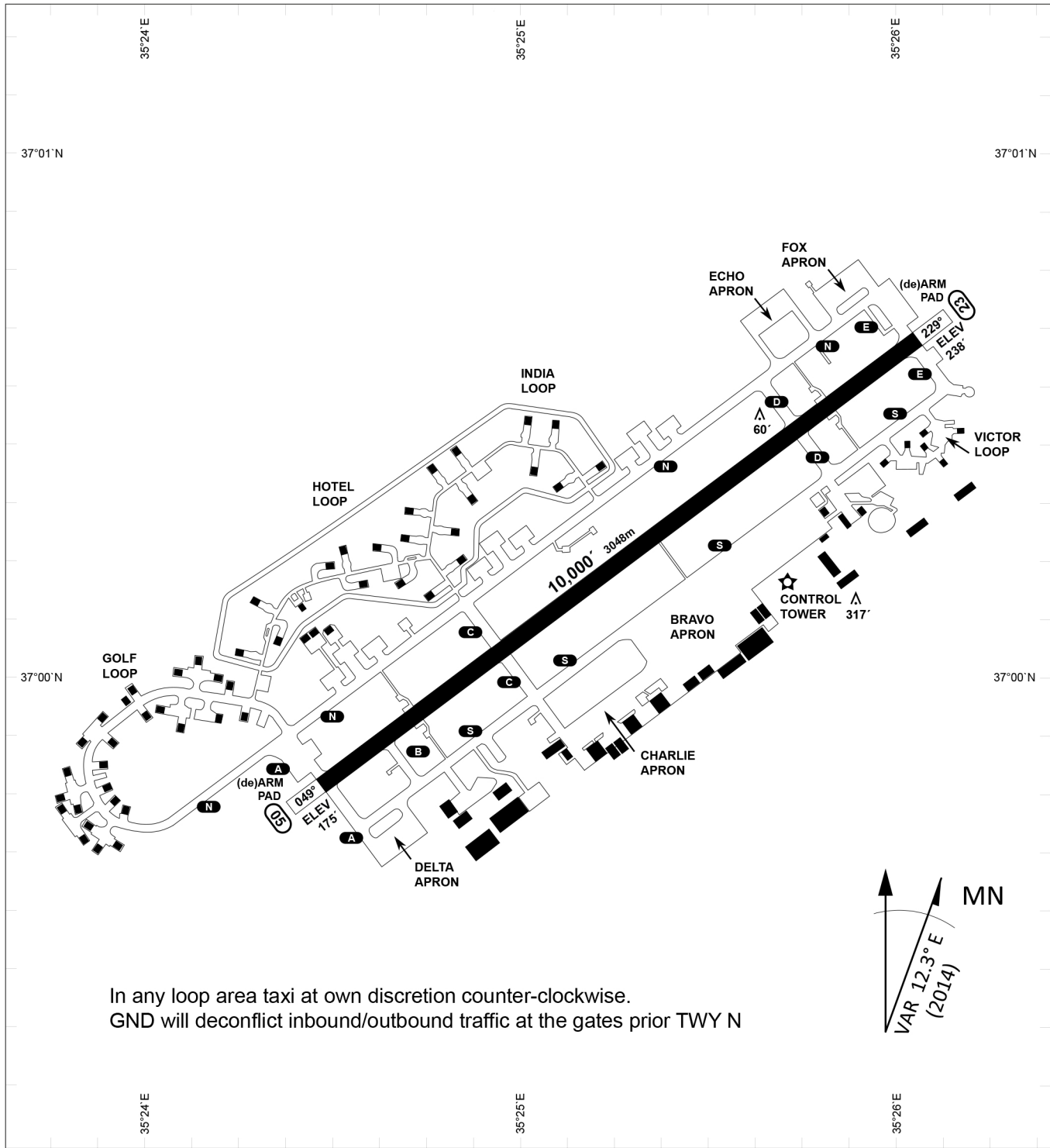
Pass entry EAGLE / TIGER / FALCON at 2500',
pass INITIAL at 2000' break to the south at 2000' pattern altitude.

HELICOPTER ROUTES

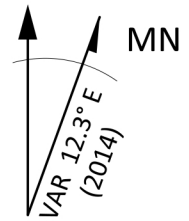
Pass entry EAGLE / TIGER / FALCON at 1000' or below, pass INITIAL at 1000' break to the south at 1000' pattern altitude.

DEPARTURE ALL DIRECTIONS

pass DER below 1500ft



In any loop area taxi at own discretion counter-clockwise.
 GND will deconflict inbound/outbound traffic at the gates prior TWY N



PAR	RWY	CAT	MINIMA	ARP	ELEV	Scale 1:35'500 0 300 600 900 1200 1500 [m] 0 1000 2000 3000 4000 5000 [ft]
SRA	21L 3R 21R 3L	A B D E A B D E A C D E A C D E	2057 - 0.8 200 (200-0.8/1.6) GS 3° 2057 - 0.8 200 (200-0.8/1.6) GS 3° 2257 - 1.2 350 (350-1.2/1.6) 2257 - 1.2 350 (350-1.2/1.6)	37°0'56.000" N 35°26'53.000" E	1857 [ft] 566 [m]	

RWY	TORA	TORA from D	TORA from B	COURSE	PSN THR	ALS
23	10,000 [ft] 3048 [m]	8,000 [ft] 2438 [m]		235°	37°00.611'N 035°26.368'E	⊙
05	10,000 [ft] 3048 [m]		9,000 [ft] 2743 [m]	055°	36°59.043'N 035°24.760'E	⊙

ATIS	INCIRLIK GROUND	INCIRLIK TOWER	CONTROL	TACAN	ILS RWY 05	ILS RWY 23
377.475	371.350 123.020	360.100 121.100	337.800	DAN21x	109.3MHz	111.7MHz