

**MISSION DATA CARD**

OPORD		Callsign		Mission		Date/Time		
3703/2025		Nazgul 6		Training		032000MAR25		
Task	Training					Freq		
AO						262.45		
Departure				Recovery				
SID RWY 21				ILS RWY 21				
#	Callsign		Pilot		IFF	TCN	LSR	NET
-2	Nazgul 6-2		Tank		1162	64Y	1562	
-3	Nazgul 6-3		Razorback		1163	64X	1563	

**LOADOUT**

A/A	2xA120C, 2xA9M				GUN	100%	SAPHEI
A/G					CHF	120	
POD	TGT, NAV				FLR	60	
TKS					FUEL	100%	

**TOLD**

	Takeoff	Target	Joker	Bingo	Land
FUEL	22588				

**AIRBASES**

	Name	TCN	ATIS	GND	TWR	RWY	Elev	ILS
Dep	Rovaniemi	14X	282.8	282.5	250.55	21	643	111.7
Arr	Rovaniemi	14X	282.8	282.5	250.55	21	643	111.7
Div	Bodo	45X	320.7		250.75	25	19	110.3

**FLIGHTPLAN**

#	Name	Navaid/Coords/DME	ALT	TOT
1	IBSAN	N66 42.500 E025 01.083	10000	
2	NAFFI	N67 04.630 E023 11.660	20000	
3	SEPJA	N67 27.300 E021 12.080	30000	
4	LIVLI	N67 16 E016 47.420	8000	
5	SEPJA	N67 27.300 E021 12.080	25000	
6	NAFFI	N67 04.630 E023 11.660	20000	
7	OSLIT	N66 51.750 E025 24.383	5000	
8	NIPAK	N66 42.350 E026 06.083	2500	

**COMMS**

Radio	Usage
1	4,16,4,3
2	10(ARCO), 6(Bodo)

## NOTES

Beginn "Nachtmonat"

Take off/Landing: Rovaniemi TCN:14X ILS21:111.7

Divert: Bodo 45X 250.75

Refuel Tanker: Arco1 319.8 TCN:22Y

**SUPPORT****Tanker**

Callsign	TCN	Freq	ALT	TAS
ARCO 1	22Y	319.8		
	Pos			

**AWACS**

Callsign	Freq	ALT	Pos
HEIMDALL	348.7		

## OTHER FLIGHTS

Callsign	Mission	Airframe	Freq	TCN	Grpld	Laser
Rattler 7	Training	4x AH-64D	133.5	1/64		125X
AO		Task				
Tiger 1	Training	4x F/A-18C	261.15	1/64	1	155X
AO	ESR01	Task	SEAD / DEAD			
Monster 1	Training	1x A-10C	132.15	1/64	21	161X
AO	ESR03	Task	CBU TRAINING			
T-Rex 1	Training	1x A-10C	131.15	1/64	25	164X
AO	ESR03	Task	CBU TRAINING			
Monster 4	Training	1x A-10C	132.15	1/64	4	144X
AO	ESR03	Task	CBU TRAINING			
Panther 1	Training	4x F/A-18C	261.35	1/64		157X
AO		Task	Case III Training			
Raptor	Training	1x F-16C	134.0	1/64		162X
AO		Task				

## RADIO CHANNELS

#	Freq	Name
1		Flight/Squadron specific
2	282.8	Rovaniemi ATIS
3	282.5	Rovaniemi Ground
4	250.55	Rovaniemi Tower
5	320.7	Bodo ATIS
6	250.75	Bodo Tower
7	235.45	Kallax ATIS
8	250.3	Kallax Tower
9	265.0	Texaco-1   KC-135   Medium / Slow   71Y
10	319.8	Arco-1   KC-135   High / Fast   22Y
11	360.8	Shell-1   KC-135 MPRS   High / Fast   41Y
12	304.0	CVN-71 Rough Rider (RRR)   71X
13	303.0	LHA-1 Tarawa (TWA)   79X
14	247.8	S-3B Mauler-1 (MAU)  64Y
15	347.8	Loki (E-2D)
16	348.7	Heimdall (E-3A)
17	242.17	ESR02 - CAS Range Operator
18	34.7	ESR02 - JTAC Odin
19	270.5	Blue
20	270.75	Red

**RAMROD**

0	1	2	3	4	5	6	7	8	9
C	O	N	J	U	G	A	T	E	S

**KTC 1400 C**

	0	1	2	3	4	5	6	7	8	9
A	LVKU	HFP	DOX	NR	BW	JTA	YS	EM	CQ	IG
B	EHGS	PKV	CYB	TM	UX	AOD	NW	FL	RI	JQ
C	YTGH	BQI	UEV	RJ	KX	SFP	MW	CO	LA	DN
D	IPSO	ADV	WLJ	RE	TX	NHK	CM	UQ	FB	YG
E	WNDP	LMI	TAO	QE	XJ	YHB	SV	UC	KF	RG
F	JWYX	CEU	NRM	IT	BL	PGS	AV	OK	QH	FD
G	BWKX	ENA	ISF	LR	TD	PYJ	HO	QG	VC	MU
H	UBFV	EJP	LTM	NG	SI	DHK	YC	WX	QR	AO
I	PLIR	NHJ	FVD	TE	AO	BKQ	WY	CG	XM	US
J	CENA	YLV	KSR	JD	BQ	FMT	UW	XH	IP	OG
K	OQIH	EVC	PLU	TN	MB	GDF	RX	WJ	KA	YS
L	GPED	NWB	MOI	QK	UJ	CTY	VS	FL	AX	RH
M	HGFB	NLW	RVE	XA	QP	TKD	US	IJ	MC	YO
N	ORUP	GTN	EBI	JK	DX	CQH	LS	WM	FV	YA
O	MBPQ	EFN	YIG	OC	SJ	KLU	HX	DW	RV	TA
P	FPMN	LSE	HGK	BO	XD	VJQ	YC	UA	RT	IW
Q	IRQE	TLK	CMP	BS	AV	JOX	WD	FH	YN	GU
R	PJQI	ESH	YAT	XR	FN	VMB	OK	LD	CW	UG
S	MJRQ	PCT	SYX	EI	DA	NVK	FG	HL	WB	UO
T	NOTP	BSK	GFA	CJ	WR	LQY	ED	VU	XH	MI
U	BTOA	LJG	KNR	UY	DW	VSE	PX	CQ	FM	HI
V	HFUK	DVE	LSA	OI	YJ	GRC	QX	TN	BW	MP
W	DEBP	HST	LMA	XR	FK	WNI	YU	VC	OQ	JG
X	KPBF	LND	WHY	JX	SV	RAC	UQ	EO	GT	MI
Y	CGFI	RUB	DYE	SA	PL	QNO	KW	HV	MT	XJ

**NAVAIDS**

Id	Name	Channel	Position	Elevation
BOO	Bodo	45	N67 15.838 E014 20.046	43
BNK	Banak	47	N70 03.937 E024 58.181	17
OYA	Andoya	28	N69 17.175 E016 08.658	19



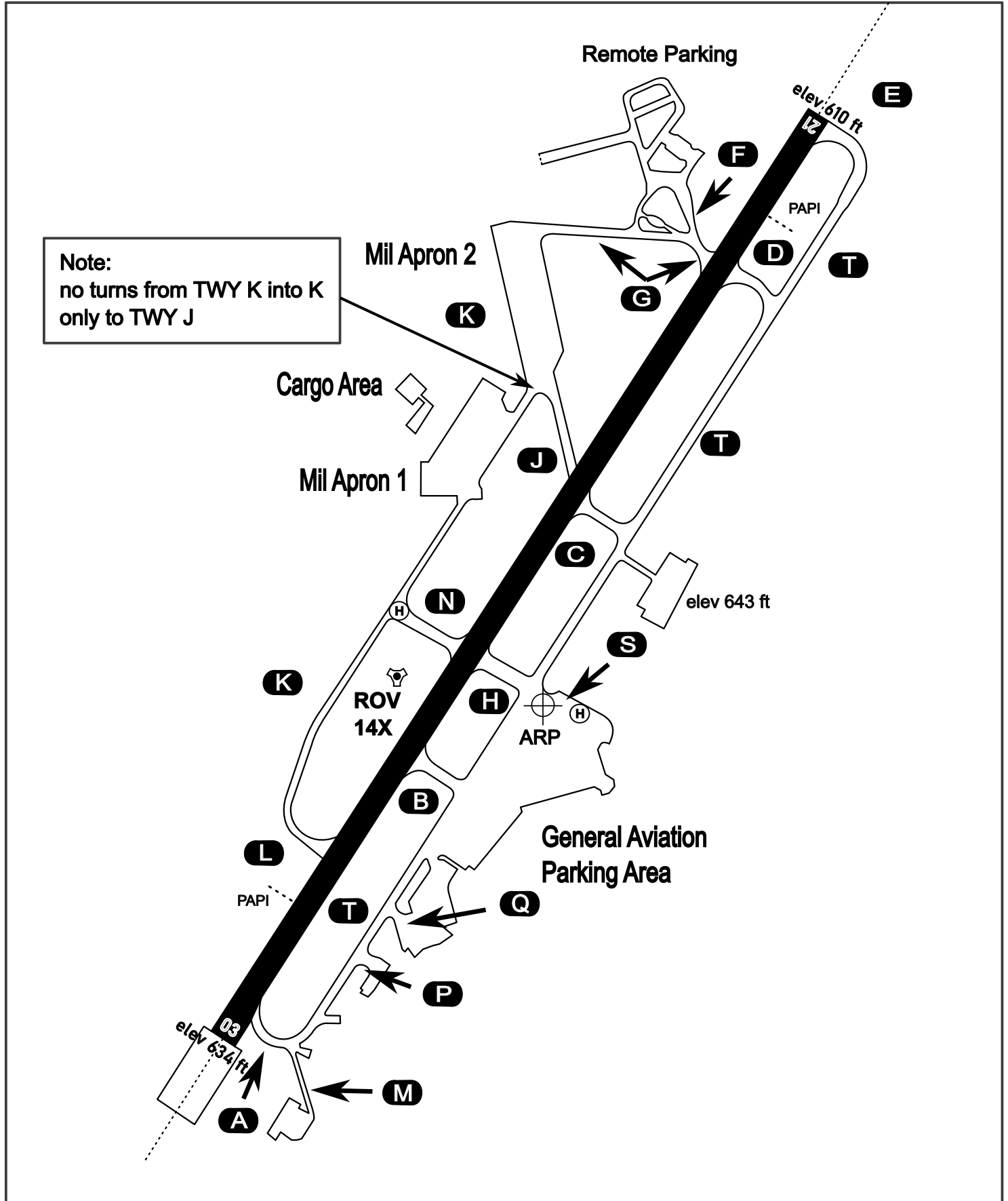
# AERODROME CHART

Rovaniemi Aerodrome

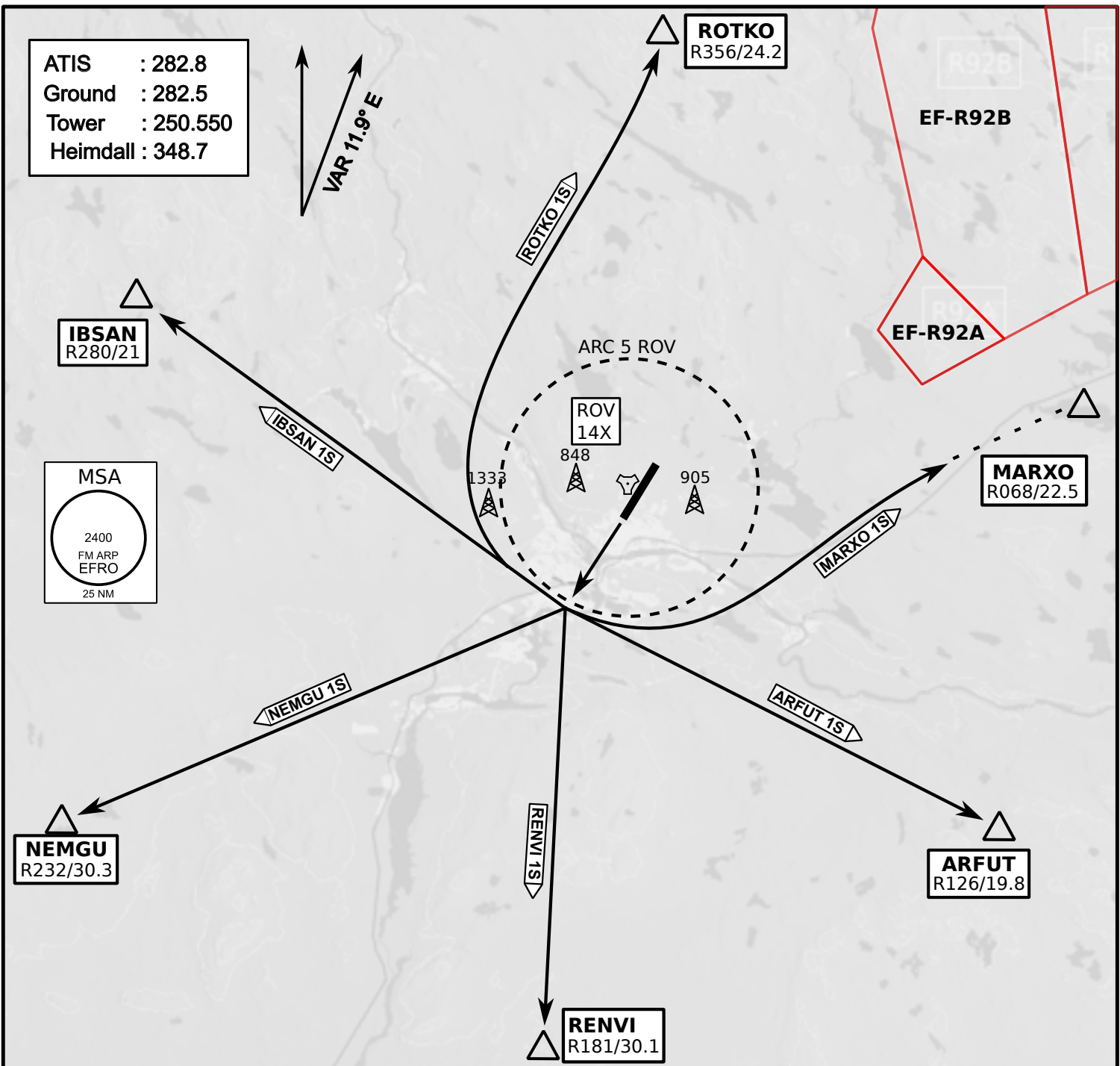
ARP N66° 33' 42" E025° 49' 51"

elev 643 ft

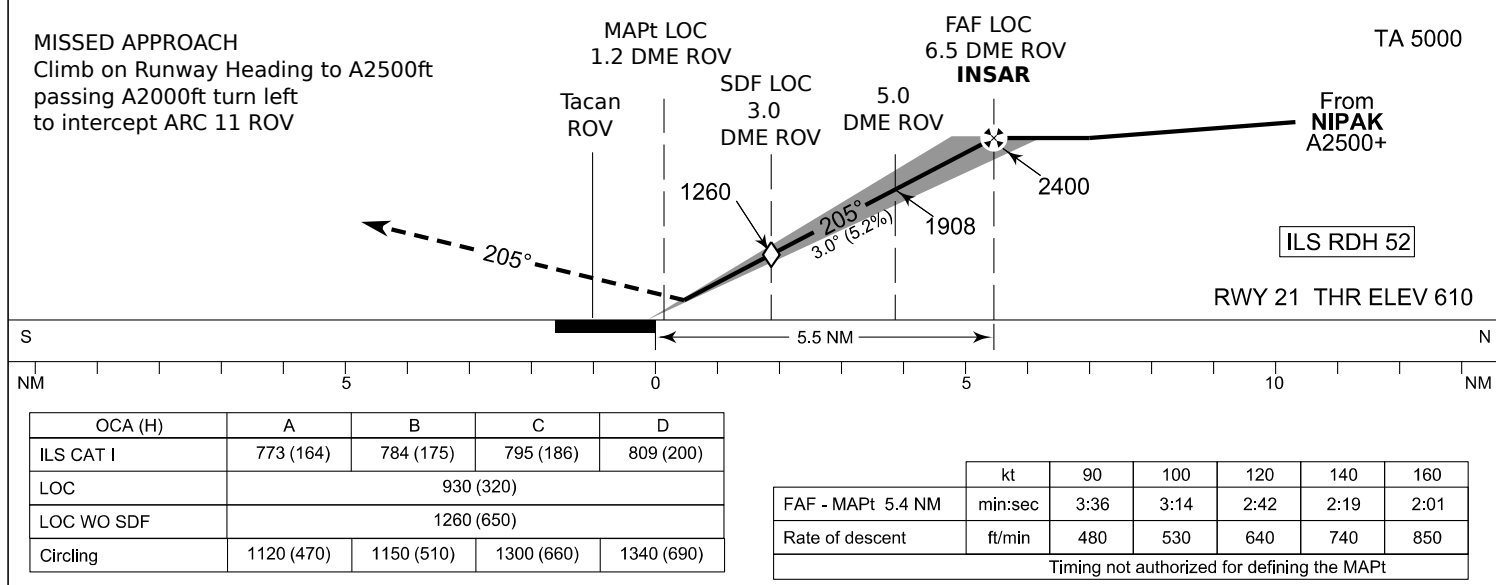
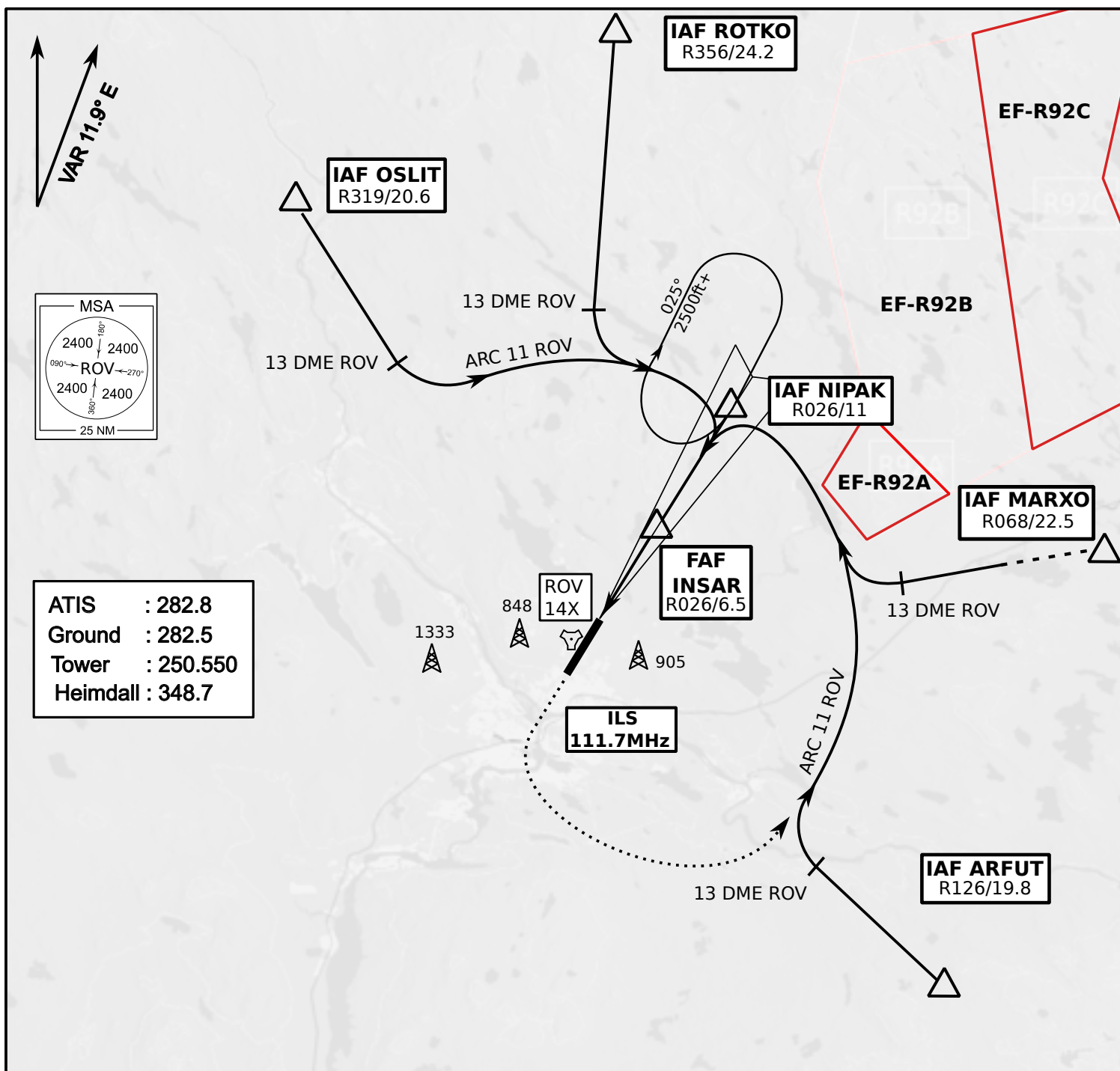
## ROVANIEMI, FINLAND



ATIS	Ground	Tower	Radar
282.800	282.500	250.550	348.700



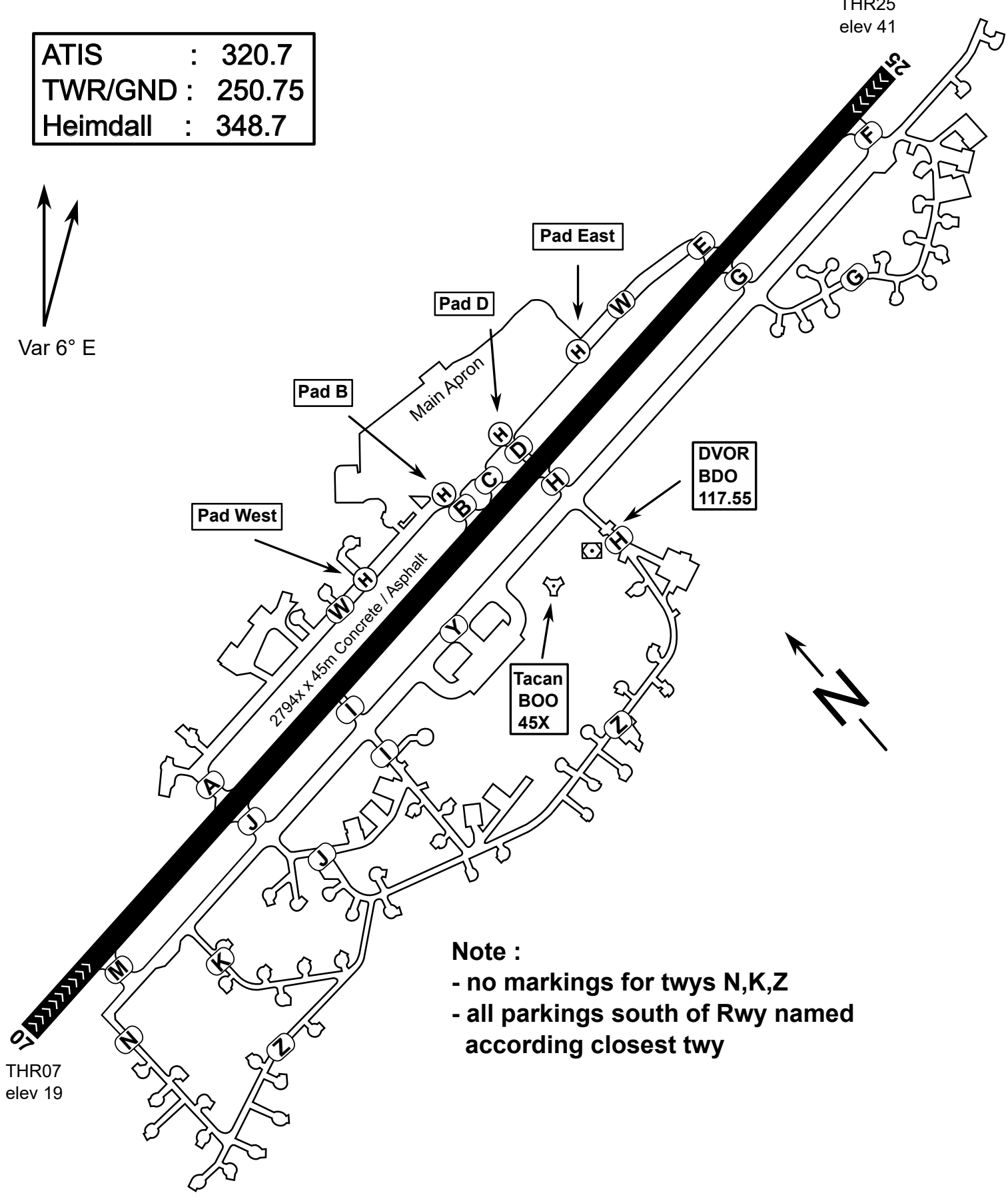
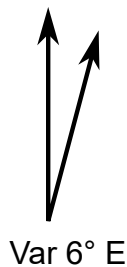
- Climb on Rwy heading to min A2000ft
- when passing A2000ft OR 5 DME ROV (whichever is later) turn direct exit point
- Stay outside ARC 5 ROV
- AB usage only if necessary for flight safety



**NOT AVAILABLE**

ATIS	: 320.7
TWR/GND	: 250.75
Heimdall	: 348.7

THR25  
elev 41



THR07  
elev 19

**Note :**

- no markings for twys N,K,Z
- all parkings south of Rwy named according closest twy