

MISSION DATA CARD

OPORD		Callsign		Mission		Date/Time		
3696/2025		Rattler 7		Training		032000MAR25		
Task						Freq		
AO						133.5		
Departure				Recovery				
VFR Helicopter				VFR Helicopter				
#	Callsign		Pilot		IFF	TCN	LSR	NET
-1	Rattler 7-1		Hudson/Remotex		4611	1Y	1251	
-2	Rattler 7-2		Warblade/Laud		4612	64Y	1252	

LOADOUT

A/A						GUN	25% HEDP
A/G	8xAGM114L, 8xAGM114K					CHF	30
POD						FLR	60
TKS						FUEL	100%

TOLD

	Takeoff	Target	Joker	Bingo	Land
FUEL	2513				

AIRBASES

	Name	TCN	ATIS	GND	TWR	RWY	Elev	ILS
Dep	Rovaniemi	14X	282.8	282.5	250.55	21	643	111.7
Arr	Rovaniemi	14X	282.8	282.5	250.55	21	643	111.7

FLIGHTPLAN

#	Name	Navaid/Coords/DME	ALT	TOT
1	VIKA	N66 37.47 E026 13.56		
2	R92A-FARP-KIMI	N66 37.80 E026 22.72		
3	R92A Nord	N66 50 E026 14		
4	R92A Nord 2	N66 59 E026 22		
5	Entry R92C	N66 57 E026 35		
6	R92C BP	N66 52 E026 40		

COMMS

Radio	Usage
1	133.5
2	250.550
3	35.35

NOTES

Was soll geübt werden:

--

- Radar Handoff
- Buddy - Lase
- Laser - Handoff

--

Loadout:

siehe FPT : 100% Sprit, Radar, 25% gun, 12x Hellfire K + 4x Hellfire L

--

Routing:

Raus über Vika, aufmunitionieren im Farp Kimi, dann nach Norden westlich an der EFR92B und über Norden in die R92C

Übungsablauf:

- Gemeinsamer Flug nördlich in die R92C
- 1500 - 2000 ft über agl
- Combat Spread
- um den Kullelampi See gibt es einen Konvoi der als Primärziel erhalten muss

OTHER FLIGHTS

Callsign	Mission	Airframe	Freq	TCN	Grpld	Laser
Tiger 1	Training	4x F/A-18C	261.15	1/64	1	155X
AO	ESR01	Task	SEAD / DEAD			
Nazgul 6	Training	4x F-15E	262.45	1/64		156X
AO		Task	Training			
Monster 1	Training	1x A-10C	132.15	1/64	21	161X
AO	ESR03	Task	CBU TRAINING			
T-Rex 1	Training	1x A-10C	131.15	1/64	25	164X
AO	ESR03	Task	CBU TRAINING			
Monster 4	Training	1x A-10C	132.15	1/64	4	144X
AO	ESR03	Task	CBU TRAINING			
Panther 1	Training	4x F/A-18C	261.35	1/64		157X
AO		Task	Case III Training			
Raptor	Training	1x F-16C	134.0	1/64		162X
AO		Task				

RADIO CHANNELS

#	Freq	Name
1		Flight/Squadron specific
2	282.8	Rovaniemi ATIS
3	282.5	Rovaniemi Ground
4	250.55	Rovaniemi Tower
5	320.7	Bodo ATIS
6	250.75	Bodo Tower
7	235.45	Kallax ATIS
8	250.3	Kallax Tower
9	265.0	Texaco-1 KC-135 Medium / Slow 71Y
10	319.8	Arco-1 KC-135 High / Fast 22Y
11	360.8	Shell-1 KC-135 MPRS High / Fast 41Y
12	304.0	CVN-71 Rough Rider (RRR) 71X
13	303.0	LHA-1 Tarawa (TWA) 79X
14	247.8	S-3B Mauler-1 (MAU) 64Y
15	347.8	Loki (E-2D)
16	348.7	Heimdall (E-3A)
17	242.17	ESR02 - CAS Range Operator
18	34.7	ESR02 - JTAC Odin
19	270.5	Blue
20	270.75	Red

RAMROD

0	1	2	3	4	5	6	7	8	9
C	O	N	J	U	G	A	T	E	S

KTC 1400 C

	0	1	2	3	4	5	6	7	8	9
A	LVKU	HFP	DOX	NR	BW	JTA	YS	EM	CQ	IG
B	EHGS	PKV	CYB	TM	UX	AOD	NW	FL	RI	JQ
C	YTGH	BQI	UEV	RJ	KX	SFP	MW	CO	LA	DN
D	IPSO	ADV	WLJ	RE	TX	NHK	CM	UQ	FB	YG
E	WNDP	LMI	TAO	QE	XJ	YHB	SV	UC	KF	RG
F	JWYX	CEU	NRM	IT	BL	PGS	AV	OK	QH	FD
G	BWKX	ENA	ISF	LR	TD	PYJ	HO	QG	VC	MU
H	UBFV	EJP	LTM	NG	SI	DHK	YC	WX	QR	AO
I	PLIR	NHJ	FVD	TE	AO	BKQ	WY	CG	XM	US
J	CENA	YLV	KSR	JD	BQ	FMT	UW	XH	IP	OG
K	OQIH	EVC	PLU	TN	MB	GDF	RX	WJ	KA	YS
L	GPED	NWB	MOI	QK	UJ	CTY	VS	FL	AX	RH
M	HGFB	NLW	RVE	XA	QP	TKD	US	IJ	MC	YO
N	ORUP	GTN	EBI	JK	DX	CQH	LS	WM	FV	YA
O	MBPQ	EFN	YIG	OC	SJ	KLU	HX	DW	RV	TA
P	FPMN	LSE	HGK	BO	XD	VJQ	YC	UA	RT	IW
Q	IRQE	TLK	CMP	BS	AV	JOX	WD	FH	YN	GU
R	PJQI	ESH	YAT	XR	FN	VMB	OK	LD	CW	UG
S	MJRQ	PCT	SYX	EI	DA	NVK	FG	HL	WB	UO
T	NOTP	BSK	GFA	CJ	WR	LQY	ED	VU	XH	MI
U	BTOA	LJG	KNR	UY	DW	VSE	PX	CQ	FM	HI
V	HFUK	DVE	LSA	OI	YJ	GRC	QX	TN	BW	MP
W	DEBP	HST	LMA	XR	FK	WNI	YU	VC	OQ	JG
X	KPBF	LND	WHY	JX	SV	RAC	UQ	EO	GT	MI
Y	CGFI	RUB	DYE	SA	PL	QNO	KW	HV	MT	XJ

NAVAIDS

Id	Name	Channel	Position	Elevation
BOO	Bodo	45	N67 15.838 E014 20.046	43
BNK	Banak	47	N70 03.937 E024 58.181	17
OYA	Andoya	28	N69 17.175 E016 08.658	19

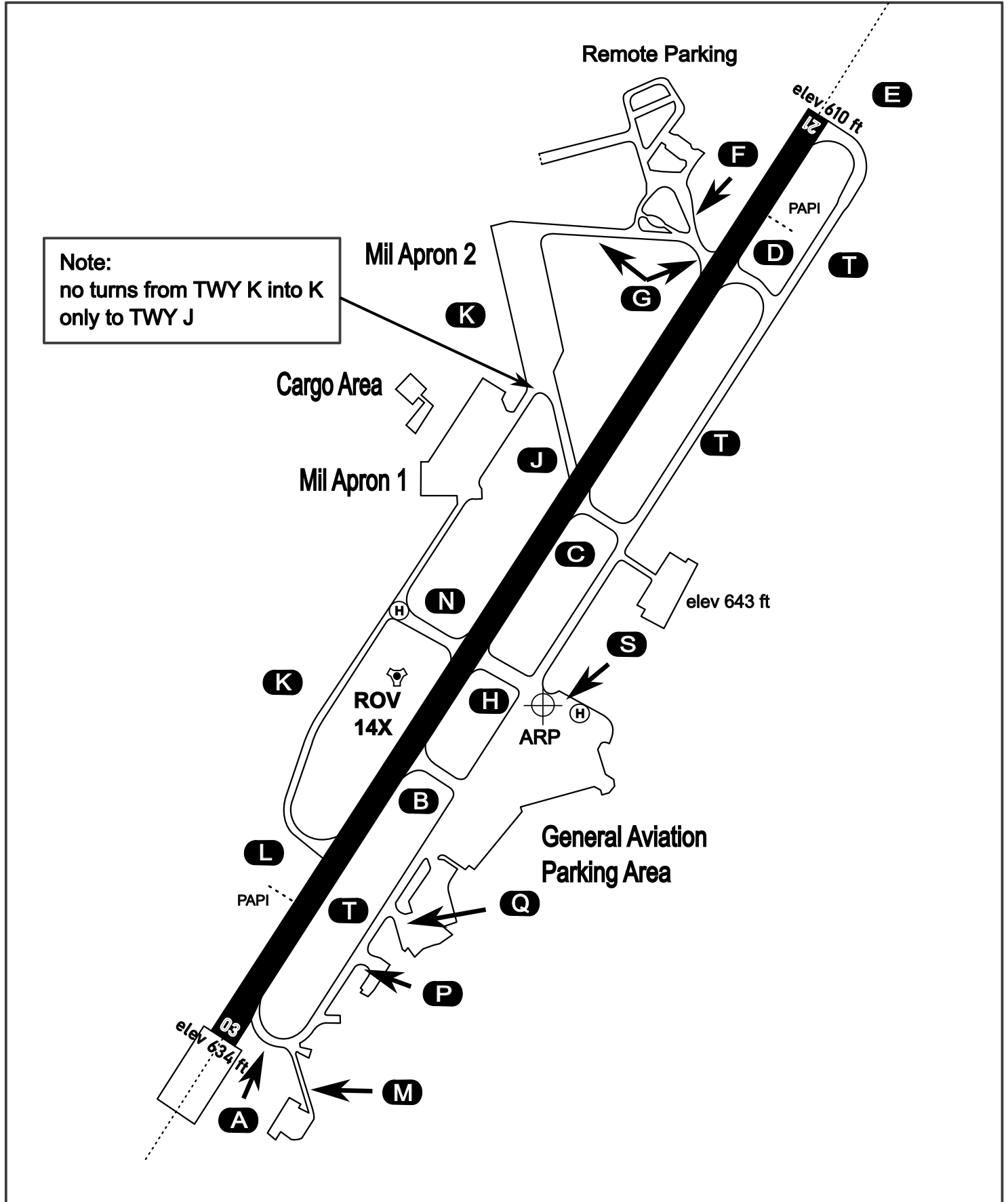
AERODROME CHART

Rovaniemi Aerodrome

ARP N66° 33' 42" E025° 49' 51"

elev 643 ft

ROVANIEMI, FINLAND

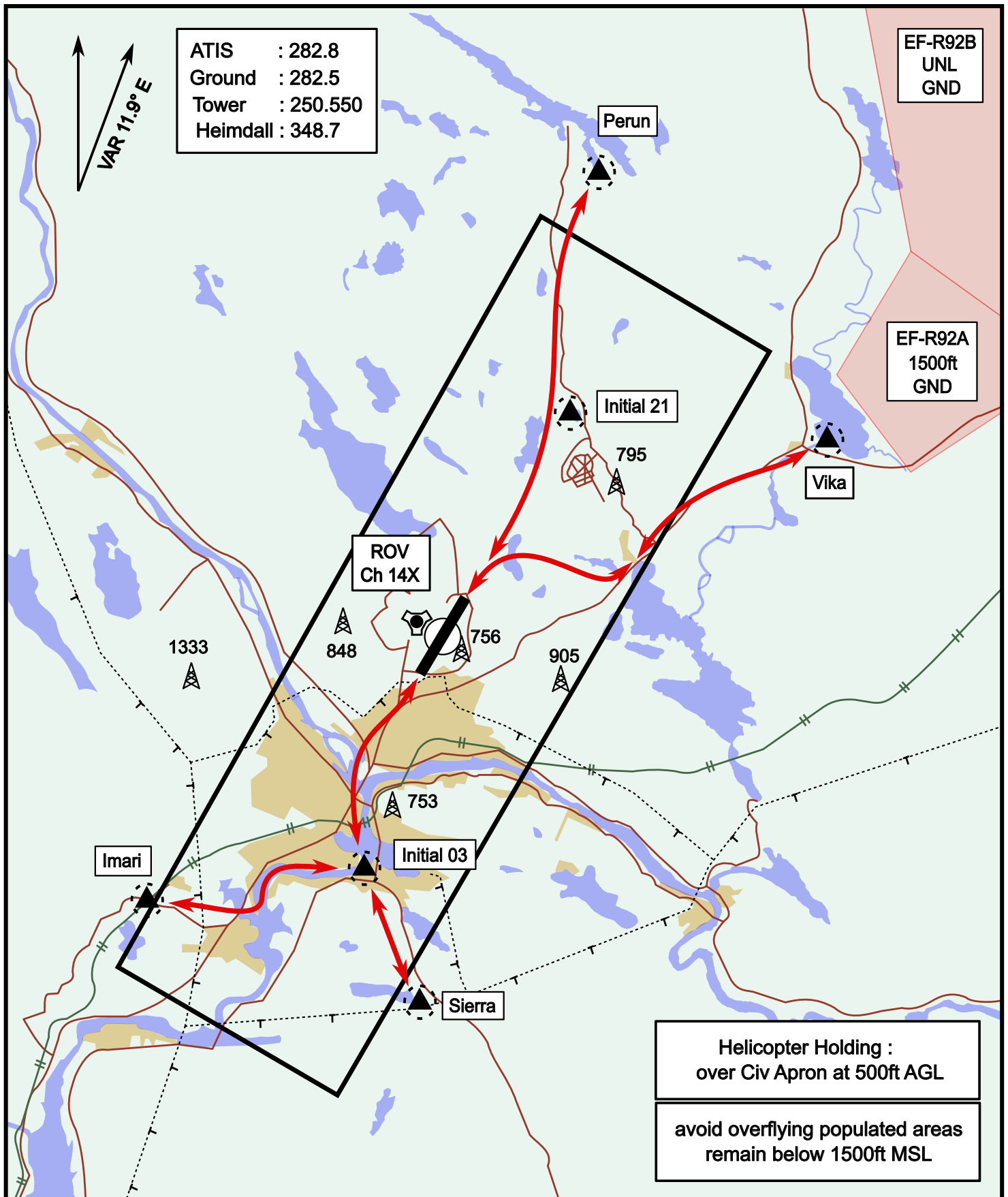


ATIS	Ground	Tower	Radar
282.800	282.500	250.550	348.700

Helicopter Routing

elev 643 ft

Rovaniemi, Finland

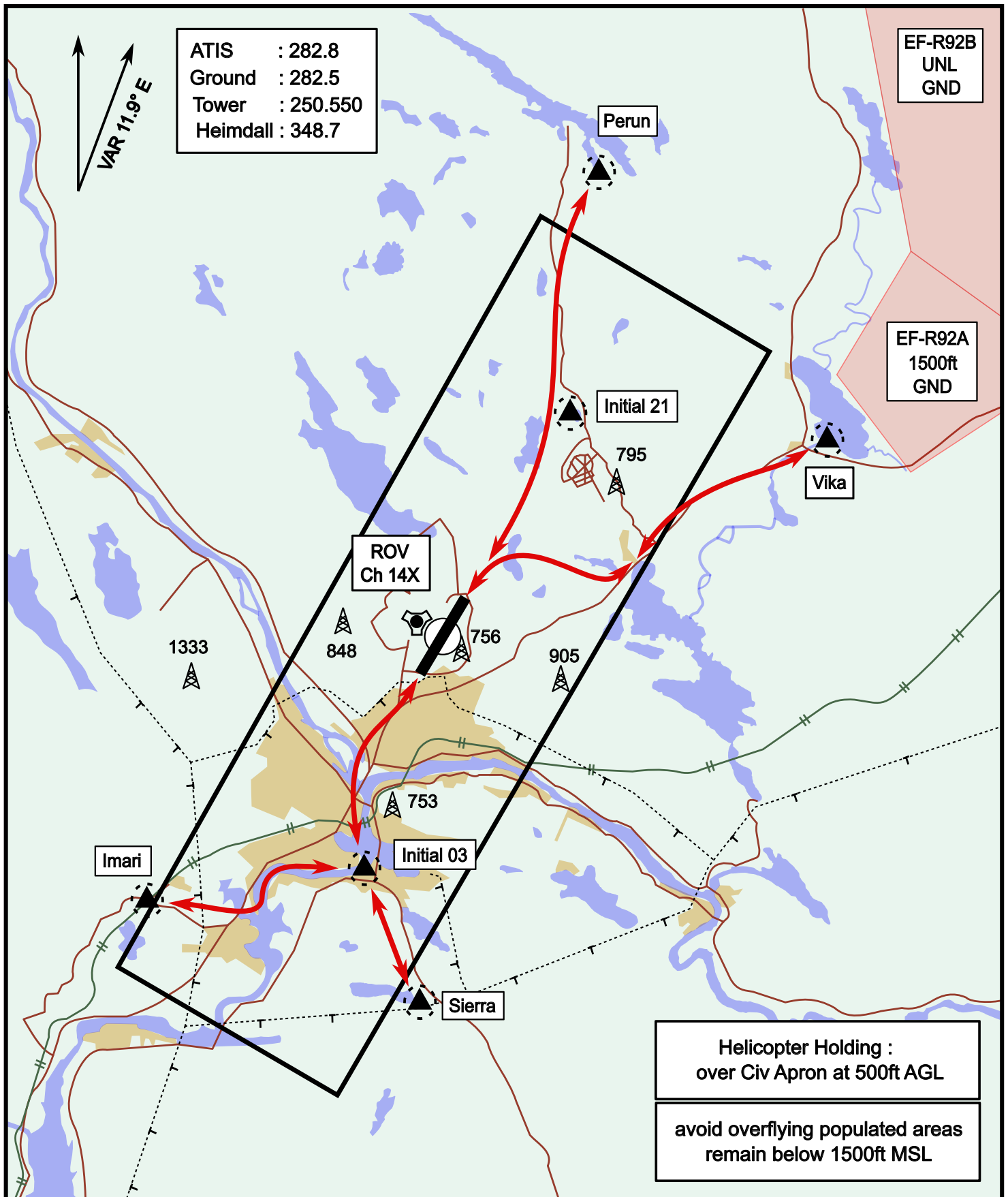


Vika	N66° 37.474 / E026° 13.557	Sierra	N66° 25.711 / E025° 46.610
Perun	N66° 44.135 / E026° 01.630	Imari	N66° 28.406 / E025° 31.291
Initial21	N66° 38.421 / E025° 58.682	Initial03	N66° 28.793 / E025° 44.105

Helicopter Routing

elev 643 ft

Rovaniemi, Finland



Vika	N66° 37.474 / E026° 13.557	Sierra	N66° 25.711 / E025° 46.610
Perun	N66° 44.135 / E026° 01.630	Imari	N66° 28.406 / E025° 31.291
Initial21	N66° 38.421 / E025° 58.682	Initial03	N66° 28.793 / E025° 44.105