

MISSION DATA CARD

OPORD		Callsign		Mission		Date/Time		
3695/2025		Raptor 1		Training		282030FEB25		
Task	Tanker / Holding / CAP					Freq		
AO						134.0		
Departure				Recovery				
VFR Departure				VFR Approach				
#	Callsign		Pilot		IFF	TCN	LSR	NET
-1	Raptor 1-1		Hercules		1611	1Y	1621	
-2	Raptor 1-2		Beathovenz		1612	64Y	1622	

LOADOUT

A/A	2xA120B, 2xA9M				GUN	100% HEI-T	
A/G					CHF	60	
POD	TGP				FLR	60	
TKS	2xFT300				FUEL	100%	

TOLD

	Takeoff	Target	Joker	Bingo	Land
FUEL	11169			3000	

AIRBASES

	Name	TCN	ATIS	GND	TWR	RWY	Elev	ILS
Dep	Rovaniemi	14X	282.8	282.5	250.55	21	643	111.7
Arr	Rovaniemi	14X	282.8	282.5	250.55	21	643	111.7

FLIGHTPLAN

#	Name	Navaid/Coords/DME	ALT	TOT
1	RVNInit03	N66 28.793 E025 44.105	2500	
2	IMARI	N66 28.406 E025 31.291	3500	
3	IBSAN	N66 42.500 E025 01.083	15000	
4	Tanker	N67 26.814 E024 34.586	20000	
5	Holding	N68 14.035 E024	20000	
6	EVOLA	N68 30.860 E024 58.410	20000	
7	ROTKO	N66 57.633 E025 57.667	15000	
8	PERUN	N66 44.135 E026 01.630	3000	
9	RVNInit21	N66 38.642 E025 58.682	2500	

NOTES

WP5 Holding/CAP Aufbau Westwärts

SUPPORT**Tanker**

Callsign	TCN	Freq	ALT	TAS
TEXACO 1	71Y	265.0		
	Pos			
ARCO 1	22Y	319.8		
	Pos			

RADIO CHANNELS

#	Freq	Name
1		Flight/Squadron specific
2	282.8	Rovaniemi ATIS
3	282.5	Rovaniemi Ground
4	250.55	Rovaniemi Tower
5	320.7	Bodo ATIS
6	250.75	Bodo Tower
7	235.45	Kallax ATIS
8	250.3	Kallax Tower
9	265.0	Texaco-1 KC-135 Medium / Slow 71Y
10	319.8	Arco-1 KC-135 High / Fast 22Y
11	360.8	Shell-1 KC-135 MPRS High / Fast 41Y
12	304.0	CVN-71 Rough Rider (RRR) 71X
13	303.0	LHA-1 Tarawa (TWA) 79X
14	247.8	S-3B Mauler-1 (MAU) 64Y
15	347.8	Loki (E-2D)
16	348.7	Heimdall (E-3A)
17	242.17	ESR02 - CAS Range Operator
18	34.7	ESR02 - JTAC Odin
19	270.5	Blue
20	270.75	Red

RAMROD

0	1	2	3	4	5	6	7	8	9
C	R	E	M	A	T	I	O	N	S

KTC 1400 C

	0	1	2	3	4	5	6	7	8	9
A	FVNE	RHQ	AWB	XT	YD	KSP	OI	JU	CL	MG
B	AGPS	VDF	WLJ	IT	BU	OYX	EC	KQ	RM	NH
C	XVKA	JPC	DSM	BY	WO	LEF	IN	UG	RT	QH
D	CMNP	VWA	RSB	UH	DF	EIX	GQ	JO	LT	KY
E	HVQT	PAY	NOJ	GX	UB	DSI	EM	LC	KR	WF
F	EKIC	NQW	PJF	MR	UV	AHG	XY	DS	BO	TL
G	UEML	PVJ	DKR	SB	GX	TFY	NQ	WI	CO	HA
H	YEQI	FDJ	HCL	TB	AR	UOS	GM	VP	NK	WX
I	DPKS	CTE	NGB	FI	LR	VMO	YX	HA	QU	JW
J	TANH	UKX	SWR	VO	MJ	LDE	YI	GB	QF	PC
K	UQIA	OYJ	LFX	PH	RS	TGW	DB	CV	NM	EK
L	QVSC	XFA	IWB	HP	ND	KOR	UT	JL	GY	ME
M	HYPM	JWN	KLA	EB	VR	CXF	SG	OU	QD	IT
N	HDWQ	FCX	AGU	SM	YT	PNI	VR	JK	BE	LO
O	NRDG	HPX	MEF	OK	UI	QWJ	CS	BL	YT	VA
P	GVLW	KTI	ESU	NC	OM	PDA	FR	BQ	JY	HX
Q	TBXH	SAW	DKU	LR	QM	YGJ	NC	FE	VP	IO
R	UAFN	RGT	PSO	WH	QY	JKV	BL	EM	ID	XC
S	VJAT	YQU	MSW	BE	NC	RPX	HO	GI	FD	LK
T	NUEF	PRO	SBC	LQ	TJ	MIW	XH	YK	GV	AD
U	RFEB	ASW	JIX	OL	TY	QPN	UC	VG	KM	HD
V	SLXV	DBN	EGO	PF	RK	UAW	QM	TJ	HY	IC
W	VQGU	SDE	FIJ	OW	YL	HAB	XP	KM	RN	TC
X	AYSM	KPO	CJE	NT	UR	HVF	LX	QW	IB	GD
Y	IFPY	STW	RUE	NB	QG	MDL	OA	KH	CX	JV

NAVAIDS

Id	Name	Channel	Position	Elevation
BOO	Bodo	45	N67 15.838 E014 20.046	43
BNK	Banak	47	N70 03.937 E024 58.181	17
OYA	Andoya	28	N69 17.175 E016 08.658	19

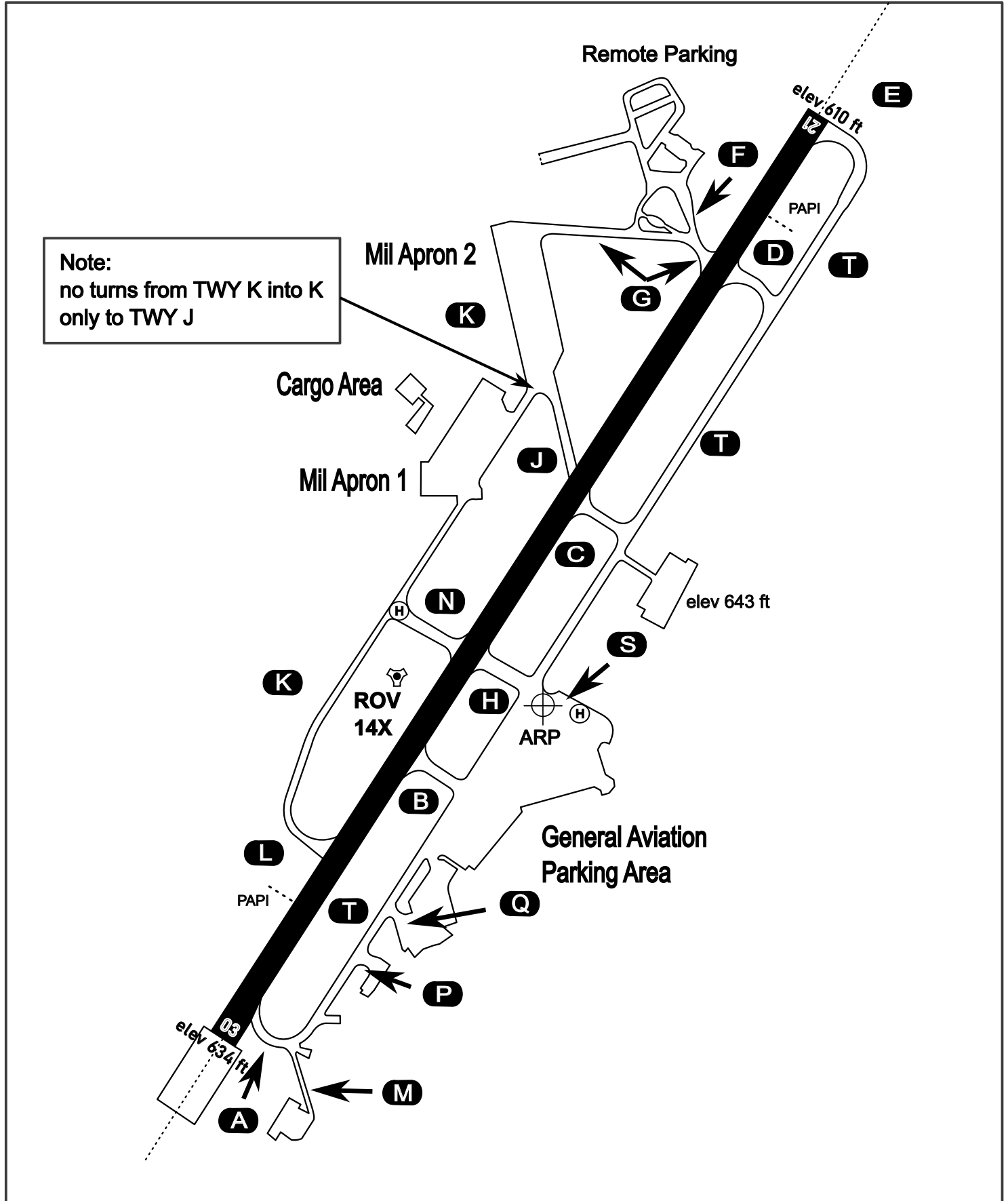
AERODROME CHART

Rovaniemi Aerodrome

ARP N66° 33' 42" E025° 49' 51"

elev 643 ft

ROVANIEMI, FINLAND

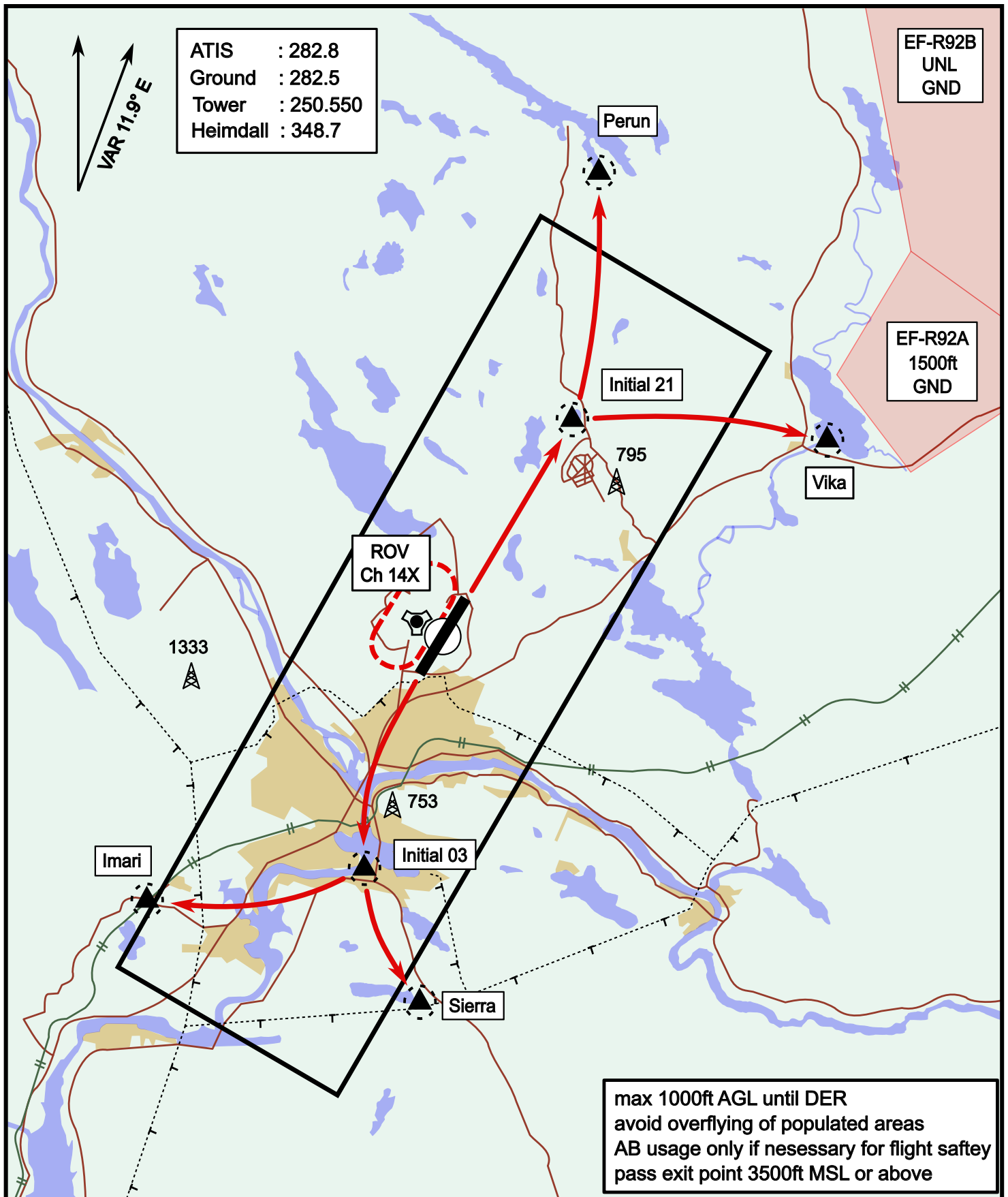


ATIS	Ground	Tower	Radar
282.800	282.500	250.550	348.700

Visual Departure Jet

elev 643 ft

Rovaniemi, Finland

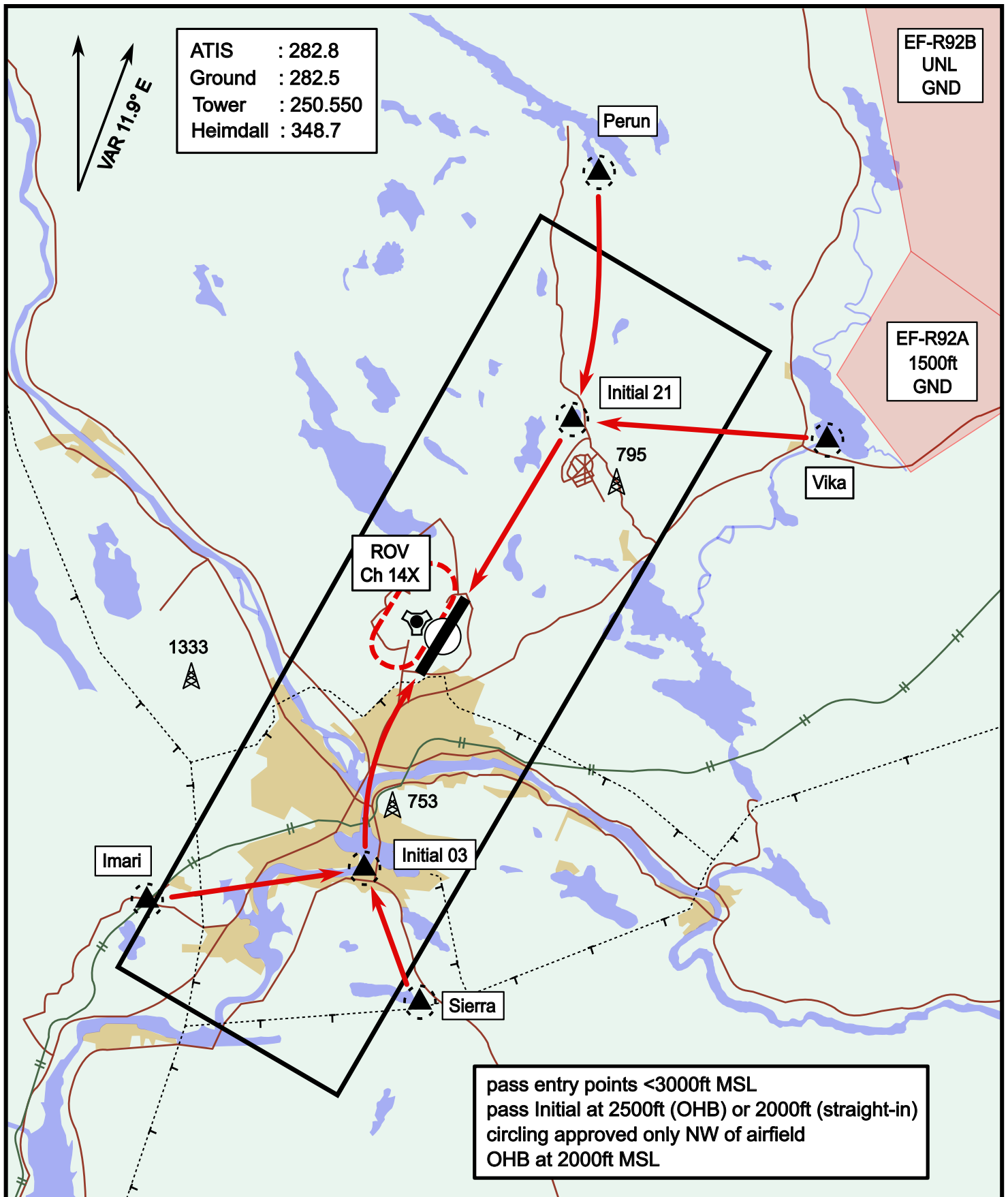


Vika	N66° 37.474 / E026° 13.557	Sierra	N66° 25.711 / E025° 46.610
Perun	N66° 44.135 / E026° 01.630	Imari	N66° 28.406 / E025° 31.291
Initial21	N66° 38.421 / E025° 58.682	Initial03	N66° 28.793 / E025° 44.105

Visual Approach Jet

elev 643 ft

Rovaniemi, Finland



Vika	N66° 37.474 / E026° 13.557	Sierra	N66° 25.711 / E025° 46.610
Perun	N66° 44.135 / E026° 01.630	Imari	N66° 28.406 / E025° 31.291
Initial21	N66° 38.421 / E025° 58.682	Initial03	N66° 28.793 / E025° 44.105