

MISSION DATA CARD

OPORD		Callsign		Mission		Date/Time		
3689/2025		Raptor 1		Training		272030FEB25		
Task	AGM-65 Training					Freq		
AO	ESR-03					134.0		
Departure				Recovery				
VFR Depature				VFR Approach				
#	Callsign		Pilot		IFF	TCN	LSR	NET
-1	Raptor 1-1		Void		1611	1Y	1621	
-2	Raptor 1-2		Woodman		1612	64Y	1622	
-3	Raptor 1-3		Snowbird		1613	64X	1623	

LOADOUT

A/A	2xA120B, 2xA9L				GUN	100%	SAPHEI
A/G	6xA65H				CHF	60	
POD	TGP				FLR	60	
TKS	2xFT300				FUEL	100%	

TOLD

	Takeoff	Target	Joker	Bingo	Land
FUEL	11169	9000	5500	3500	1500

AIRBASES

	Name	TCN	ATIS	GND	TWR	RWY	Elev	ILS
Dep	Rovaniemi	14X	282.8	282.5	250.55	21	643	111.7
Arr	Rovaniemi	14X	282.8	282.5	250.55	21	643	111.7

FLIGHTPLAN

#	Name	Navaid/Coords/DME	ALT	TOT
1	RVNInit21	N66 38.642 E025 58.682	2500	
2	PERUN	N66 44.135 E026 01.630	3500	
3	IBSAN	N66 42.500 E025 01.083	15000	
4	NAFFI	N67 04.630 E023 11.660	15000	
5	Holding W	N66 18.890 E022 30.665	15000	
6	T-ESR03-03	N66 18.534 E023 11.346	1854	
7	T-ESR03-06	N66 14.118 E022 57.210	1854	
8	IBSAN	N66 42.500 E025 01.083	20000	
9	NAFFI	N67 04.630 E023 11.660	20000	
10	IMARI	N66 28.406 E025 31.291	3000	
11	RVNInit03	N66 28.793 E025 44.105	2000	

SUPPORT**Tanker**

Callsign	TCN	Freq	ALT	TAS
ARCO 1	22Y	319.8		
	Pos			

AWACS

Callsign	Freq	ALT	Pos
HEIMDALL	348.7		

OTHER FLIGHTS

Callsign	Mission	Airframe	Freq	TCN	Grpld	Laser
Tiger 1	Training	2x F/A-18C	261.15	1/64	1	155X
AO		Task				
Tiger 2	Training	2x F/A-18C	261.25	1/64	2	155X
AO		Task				
Raptor 2	Training	4x F-16C	134.5	1/64		162X
AO	ESR-03	Task	GBU-12 Training			
Monster 1	Training	4x A-10C	132.15	1/64	21	161X
AO	ESR03	Task	CBU TRAINING			
Edelweiss 1	Training	2x F-16C	134.75	1/64		171X
AO	EAST Rovaniemi	Task	BJT			
Panther 2	Training	2x F/A-18C	261.35	1/64		157X
AO		Task				

RADIO CHANNELS

#	Freq	Name
1		Flight/Squadron specific
2	282.8	Rovaniemi ATIS
3	282.5	Rovaniemi Ground
4	250.55	Rovaniemi Tower
5	320.7	Bodo ATIS
6	250.75	Bodo Tower
7	235.45	Kallax ATIS
8	250.3	Kallax Tower
9	265.0	Texaco-1 KC-135 Medium / Slow 71Y
10	319.8	Arco-1 KC-135 High / Fast 22Y
11	360.8	Shell-1 KC-135 MPRS High / Fast 41Y
12	304.0	CVN-71 Rough Rider (RRR) 71X
13	303.0	LHA-1 Tarawa (TWA) 79X
14	247.8	S-3B Mauler-1 (MAU) 64Y
15	347.8	Loki (E-2D)
16	348.7	Heimdall (E-3A)
17	242.17	ESR02 - CAS Range Operator
18	34.7	ESR02 - JTAC Odin
19	270.5	Blue
20	270.75	Red

RAMROD

0	1	2	3	4	5	6	7	8	9
P	O	L	Y	G	A	M	I	S	T

KTC 1400 C

	0	1	2	3	4	5	6	7	8	9
A	CWTN	PHO	LIR	UK	VA	DYB	XG	MS	EQ	FJ
B	TNIK	LGH	CJO	EV	WR	XSF	DU	YQ	PB	MA
C	VNRQ	KLX	FWJ	OD	AB	MIC	GU	PS	TE	HY
D	ICNG	ROY	BWJ	LH	PD	ATX	EM	VS	UF	QK
E	AQUS	BTM	XDF	NO	HY	RCE	JV	WK	PL	IG
F	XPYN	TOB	QMD	KH	JR	EFG	UI	CL	VA	SW
G	XOGY	DTI	LMA	FE	HC	JQK	RS	NB	PV	UW
H	KCEO	AXI	PRW	MS	LJ	NDV	TQ	HU	BY	FG
I	AYJV	WMD	XIL	SH	EO	QGC	PU	RK	FT	NB
J	OBMT	RLQ	CHF	NW	XJ	VKY	PG	DS	IA	EU
K	WVYT	LGM	XJI	FS	UB	HNK	DO	RA	PC	EQ
L	WEMG	DVT	YFR	OP	CI	ULB	XA	NH	JK	SQ
M	LEGO	AVH	FCD	UX	NQ	TBS	PI	YJ	KM	RW
N	UFSC	DRB	TYG	MO	KP	QHN	EJ	XW	LI	AV
O	RQAH	KSE	DVU	CT	LF	YIP	XJ	BG	NM	OW
P	DIQO	AYJ	GVH	XF	LS	CBE	TU	RW	PN	MK
Q	QVSH	GBT	FAM	WP	IO	CJX	LU	RK	NE	DY
R	ISGT	HVK	BNX	LD	RO	EUM	PF	AY	CQ	JW
S	VICL	JRX	EBS	FO	NG	UQA	PT	KW	MY	DH
T	UOXQ	WNY	VML	BG	JK	FTE	PD	HC	RS	IA
U	CYFS	WHI	JGU	PK	ML	OEN	TB	VD	RQ	AX
V	UMVB	QLW	ACY	HR	JD	KFT	EX	NS	IO	PG
W	VCNF	KAH	XOG	YQ	TI	RSD	ME	UW	BL	PJ
X	VIJS	GTK	AQC	DP	WU	XOB	YN	LF	EH	RM
Y	LCUK	YXT	EAB	HV	OP	FWN	IM	JD	RS	QG

NAVAIDS

Id	Name	Channel	Position	Elevation
BOO	Bodo	45	N67 15.838 E014 20.046	43
BNK	Banak	47	N70 03.937 E024 58.181	17
OYA	Andoya	28	N69 17.175 E016 08.658	19

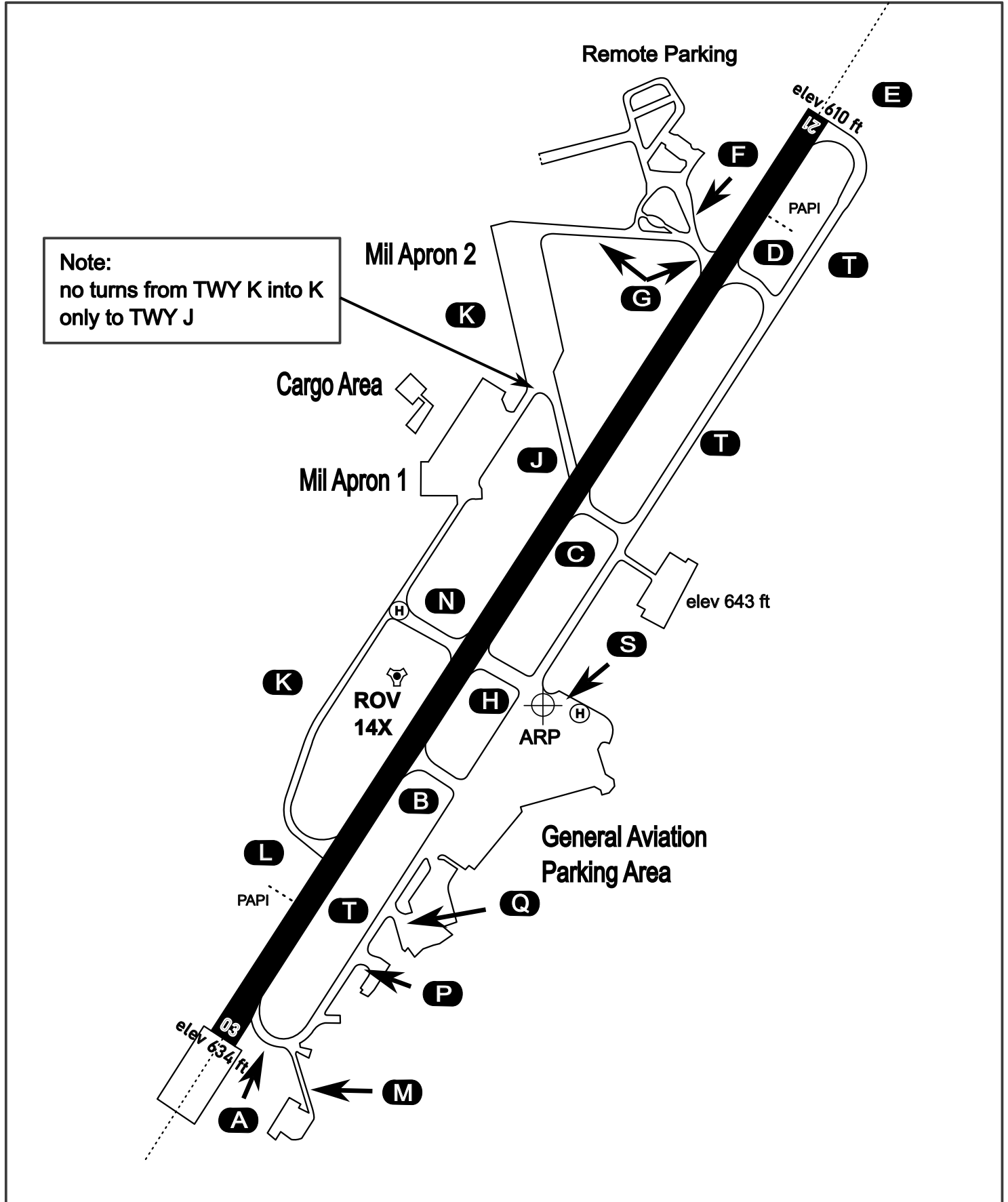
AERODROME CHART

Rovaniemi Aerodrome

ARP N66° 33' 42" E025° 49' 51"

elev 643 ft

ROVANIEMI, FINLAND

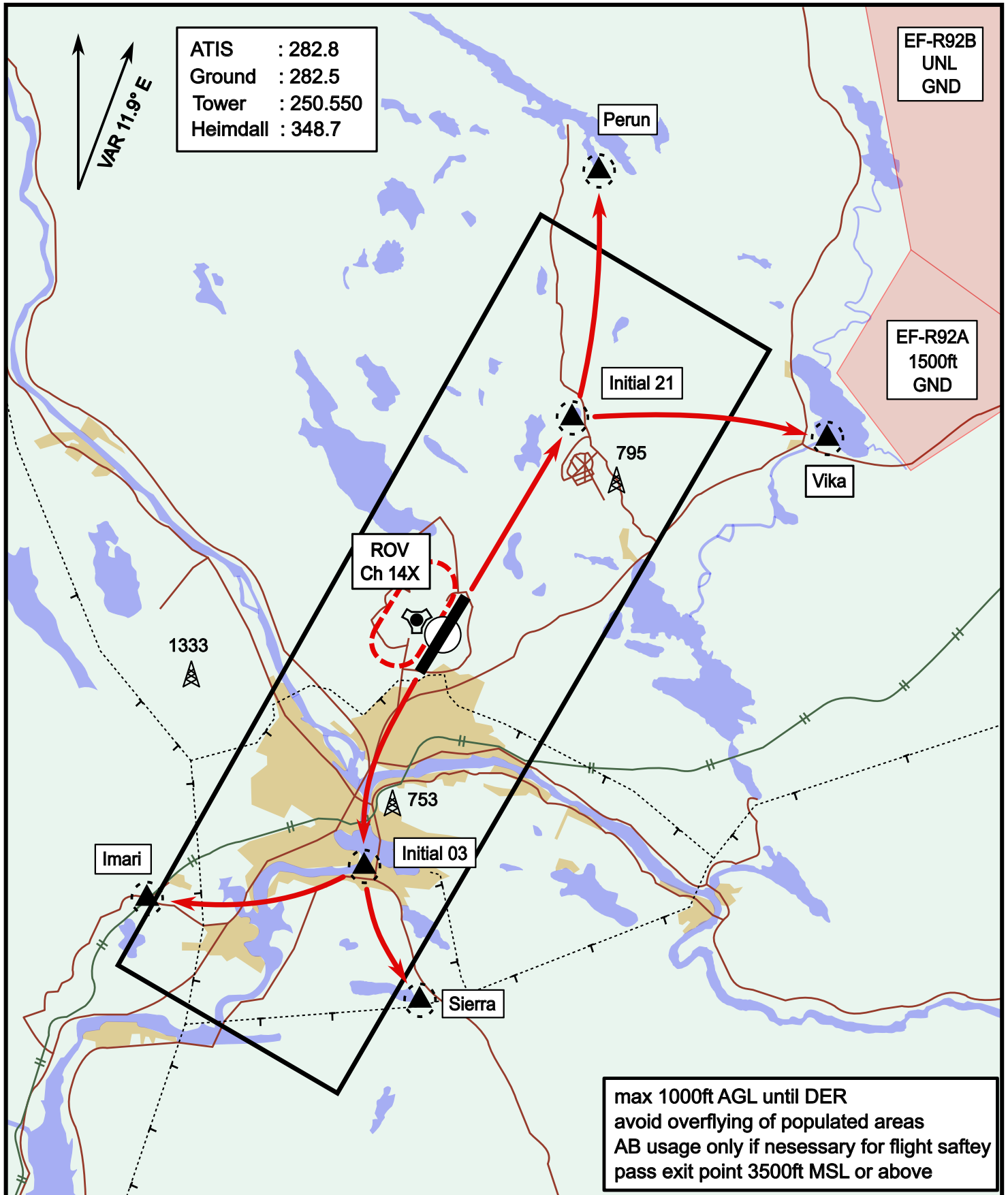


ATIS	Ground	Tower	Radar
282.800	282.500	250.550	348.700

Visual Departure Jet

elev 643 ft

Rovaniemi, Finland

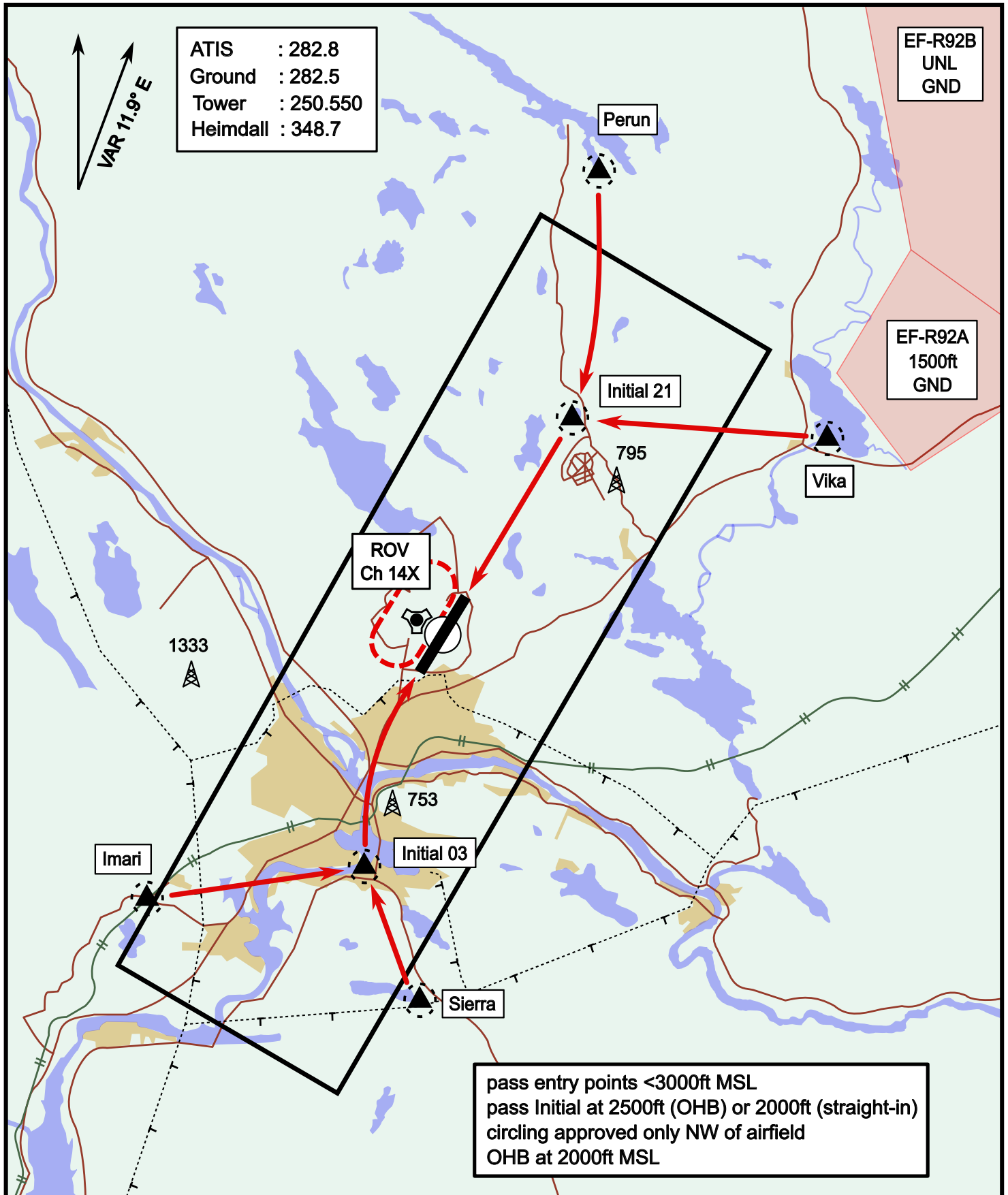


Vika	N66° 37.474 / E026° 13.557	Sierra	N66° 25.711 / E025° 46.610
Perun	N66° 44.135 / E026° 01.630	Imari	N66° 28.406 / E025° 31.291
Initial21	N66° 38.421 / E025° 58.682	Initial03	N66° 28.793 / E025° 44.105

Visual Approach Jet

elev 643 ft

Rovaniemi, Finland



Vika	N66° 37.474 / E026° 13.557	Sierra	N66° 25.711 / E025° 46.610
Perun	N66° 44.135 / E026° 01.630	Imari	N66° 28.406 / E025° 31.291
Initial21	N66° 38.421 / E025° 58.682	Initial03	N66° 28.793 / E025° 44.105