

**MISSION DATA CARD**

OPORD	Callsign	Mission	Date/Time			
3688/2025	Rattler 7	Training	242000FEB25			
Task						Freq
AO						133.5
Departure			Recovery			
VFR Helicopter			VFR Helicopter			
#	Callsign	Pilot	IFF	TCN	LSR	NET
-1	Rattler 7-1	Hudson/Remotex	4611	1Y	1251	
-2	Rattler 7-2	Mütze/Warblade	4612	64Y	1252	
-3	Rattler 7-3	Laud	4613	64X	1253	

**LOADOUT**

A/A		GUN	22% HEDP
A/G	M229 - HE MPP, 8xAGM114K, 4xAGM114L	CHF	30
POD		FLR	60
TKS		FUEL	100%

**TOLD**

	Takeoff	Target	Joker	Bingo	Land
FUEL	2513				

**AIRBASES**

	Name	TCN	ATIS	GND	TWR	RWY	Elev	ILS
Dep	Rovaniemi	14X	282.8	282.5	250.55	21	643	111.7
Arr	Rovaniemi	14X	282.8	282.5	250.55	21	643	111.7

**FLIGHTPLAN**

#	Name	Navaid/Coords/DME	ALT	TOT
1	VIKA	N66 37.47 E026 13.56		
2	R92A-FARP-KIMI	N66 37.80 E026 22.72		
3	R92B-ENTRY-SOUTH	N66 39.12 E026 25.20		
4	r92C	N66 40.90 E026 43.22		

**COMMS**

Radio	Usage
1	133.5
2	250.550
3	35.35

**OTHER FLIGHTS**

Callsign	Mission	Airframe	Freq	TCN	Grpld	Laser
Monster 1	Training	4x A-10C	132.15	1/64	21	161X
AO	ESR03	Task	CBU TRAINING			

## RADIO CHANNELS

#	Freq	Name
1		Flight/Squadron specific
2	282.8	Rovaniemi ATIS
3	282.5	Rovaniemi Ground
4	250.55	Rovaniemi Tower
5	320.7	Bodo ATIS
6	250.75	Bodo Tower
7	235.45	Kallax ATIS
8	250.3	Kallax Tower
9	265.0	Texaco-1   KC-135   Medium / Slow   71Y
10	319.8	Arco-1   KC-135   High / Fast   22Y
11	360.8	Shell-1   KC-135 MPRS   High / Fast   41Y
12	304.0	CVN-71 Rough Rider (RRR)   71X
13	303.0	LHA-1 Tarawa (TWA)   79X
14	247.8	S-3B Mauler-1 (MAU)  64Y
15	347.8	Loki (E-2D)
16	348.7	Heimdall (E-3A)
17	242.17	ESR02 - CAS Range Operator
18	34.7	ESR02 - JTAC Odin
19	270.5	Blue
20	270.75	Red

**RAMROD**

0	1	2	3	4	5	6	7	8	9
D	E	M	O	G	R	A	P	H	Y

**KTC 1400 C**

	0	1	2	3	4	5	6	7	8	9
A	FXQM	HUA	JKN	GE	DB	TVO	CW	IS	PR	YL
B	IKWH	DPU	NLE	TY	OX	GQB	AF	CM	JV	SR
C	PXLH	AEG	OIR	MN	QV	WDF	JU	KC	SY	BT
D	KEOC	DSH	RGX	UV	YF	BPN	MA	TI	QW	LJ
E	OSEY	VXC	DAN	LM	PR	QGF	BU	HT	IK	WJ
F	KVCL	STH	RWJ	OF	ED	BUP	NA	IY	XM	QG
G	APIB	NKT	LSF	RY	GD	EXH	JO	VM	WU	QC
H	MELH	KWC	VID	TB	GR	OYF	PX	JA	US	NQ
I	VMQW	LGO	CRH	JN	AD	FIY	BT	PE	SU	KX
J	RANG	PUF	IDO	CW	SX	MLV	BJ	TY	HE	KQ
K	IQUT	OJN	CSD	WK	PM	AFR	EY	VX	HB	LG
L	OWQG	AJP	YLN	DX	TM	VIH	UK	BS	EF	RC
M	VMAP	WNG	KJF	UB	HR	OLI	YS	CX	EQ	DT
N	DYVM	JAW	XCG	KL	NB	TFR	QP	UO	IH	ES
O	STPB	RXA	VOC	JN	KU	DFI	HQ	LW	EM	YG
P	HMCD	EWV	FXY	SG	AB	JOK	NR	TU	PI	LQ
Q	YAUE	COW	NIB	XQ	SG	JKL	PV	DF	HT	MR
R	GNKA	CQO	JHF	IP	MD	VYR	EU	BW	LX	TS
S	GVQE	USH	JCT	NR	IY	MDF	WP	LX	KB	AO
T	HYIW	UCD	EXM	QS	OL	GJK	TR	BP	FA	NV
U	SYWK	OMA	ERV	FI	TQ	JGX	UP	NC	LD	HB
V	GYPW	UCH	OAB	SK	LV	JNF	RQ	TX	EI	MD
W	GREV	HSL	DNP	TQ	FO	WUA	IB	KC	JX	YM
X	GHVI	DLJ	XWF	MY	CO	REK	SA	PB	TN	QU
Y	KUDX	GTE	QSY	LO	PN	IAF	VR	JH	MC	WB

**NAVAIDS**

Id	Name	Channel	Position	Elevation
BOO	Bodo	45	N67 15.838 E014 20.046	43
BNK	Banak	47	N70 03.937 E024 58.181	17
OYA	Andoya	28	N69 17.175 E016 08.658	19

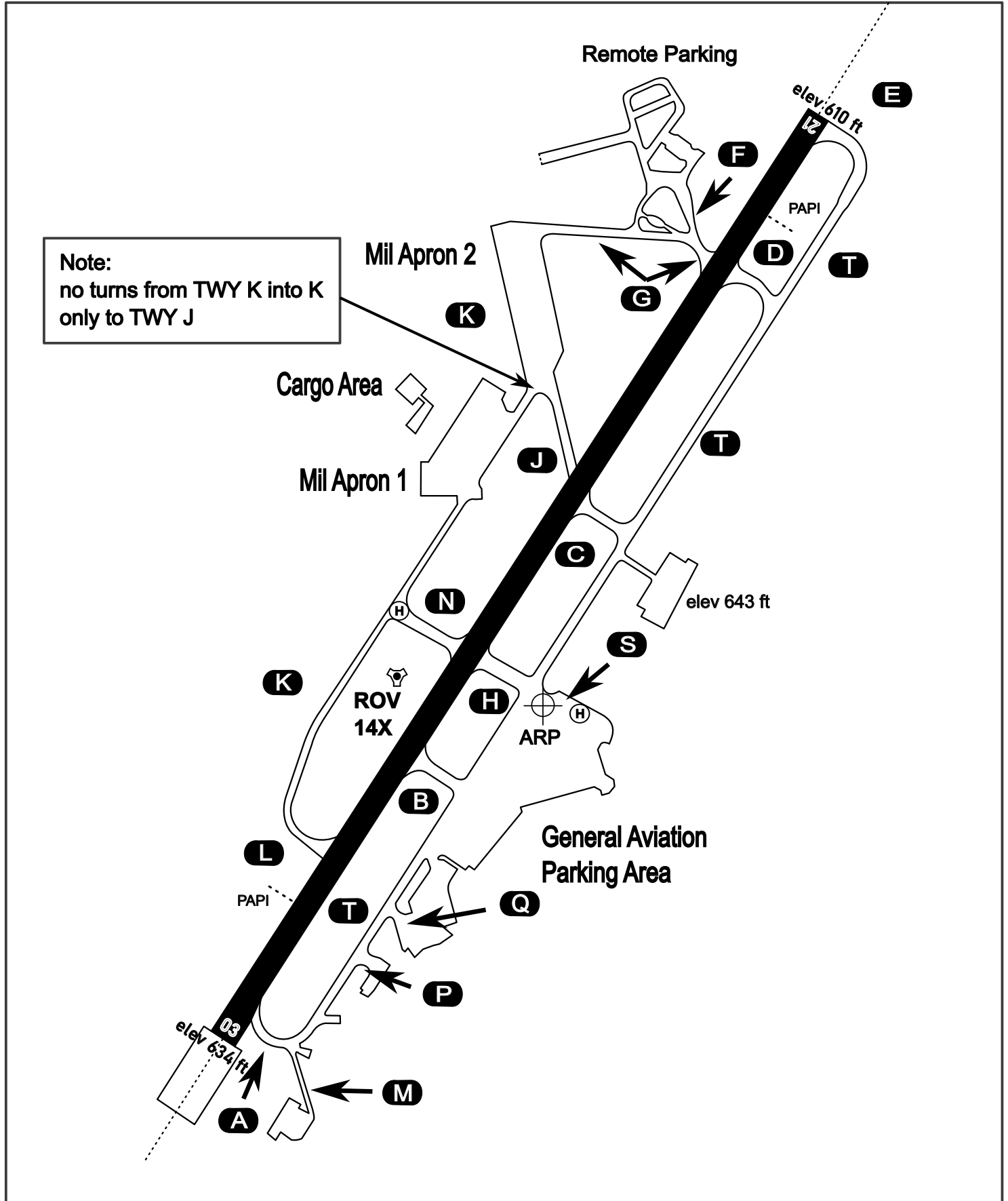
# AERODROME CHART

Rovaniemi Aerodrome

ARP N66° 33' 42" E025° 49' 51"

elev 643 ft

## ROVANIEMI, FINLAND

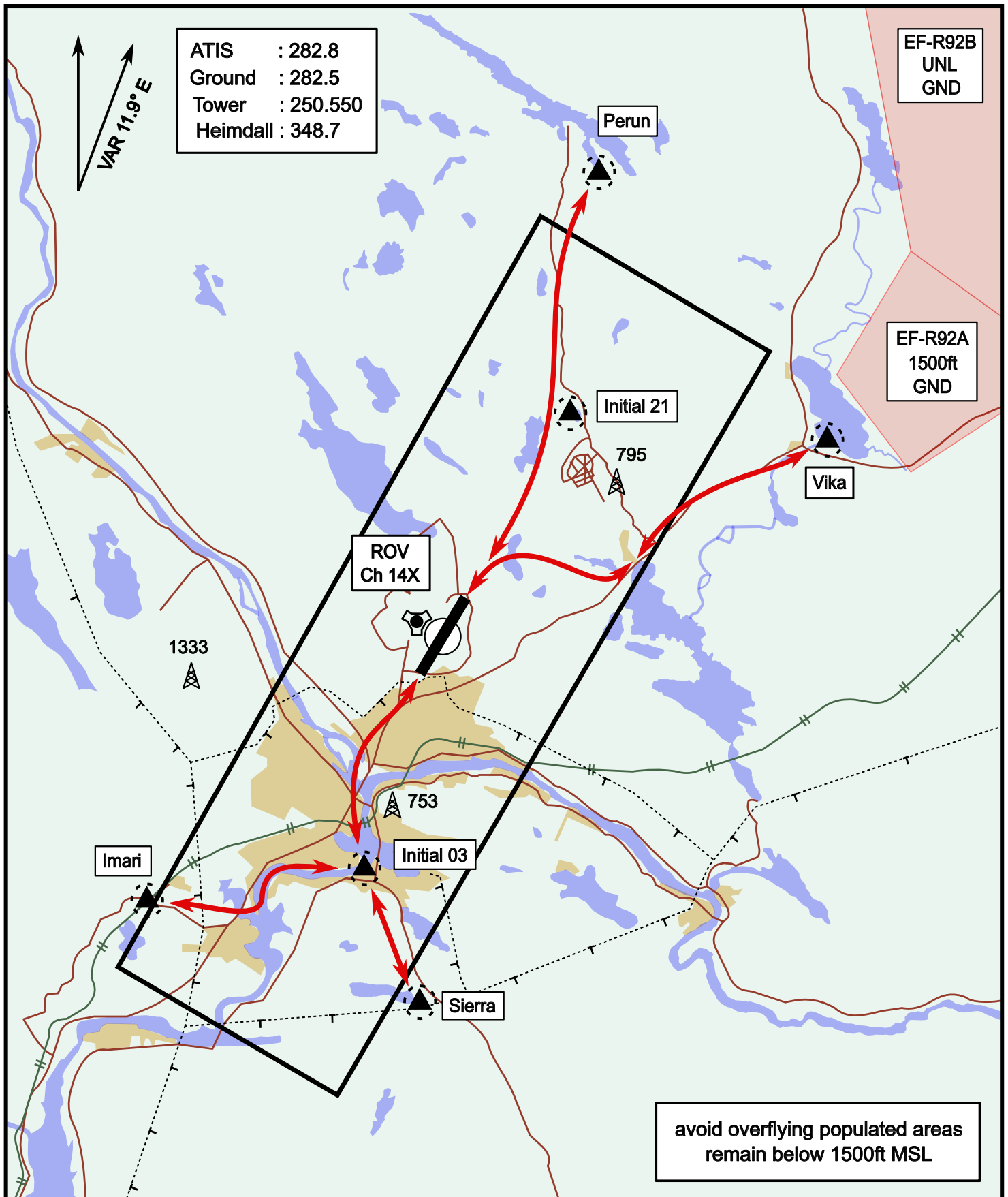


ATIS	Ground	Tower	Radar
282.800	282.500	250.550	348.700

# Helicopter Routing

elev 643 ft

# Rovaniemi, Finland



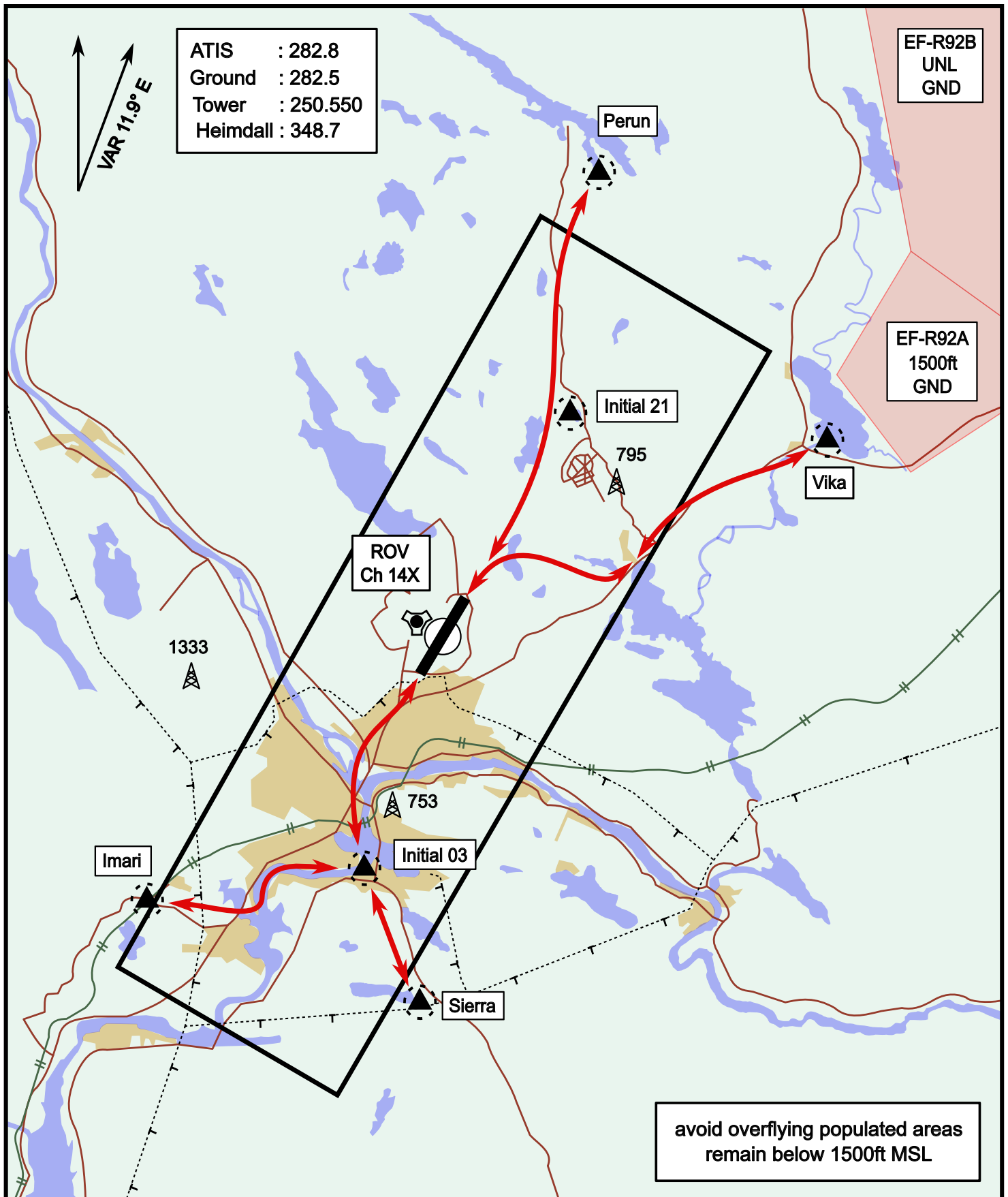
Vika	N66° 37.474 / E026° 13.557	Sierra	N66° 25.711 / E025° 46.610
Perun	N66° 44.135 / E026° 01.630	Imari	N66° 28.406 / E025° 31.291
Initial21	N66° 38.421 / E025° 58.682	Initial03	N66° 28.793 / E025° 44.105



# Helicopter Routing

elev 643 ft

# Rovaniemi, Finland



Vika	N66° 37.474 / E026° 13.557	Sierra	N66° 25.711 / E025° 46.610
Perun	N66° 44.135 / E026° 01.630	Imari	N66° 28.406 / E025° 31.291
Initial21	N66° 38.421 / E025° 58.682	Initial03	N66° 28.793 / E025° 44.105