

**MISSION DATA CARD**

OPORD		Callsign		Mission		Date/Time		
3687/2025		Monster 1		Training		242000FEB25		
Task	CBU TRAINING					Freq		
AO	ESR03					132.15		
Departure				Recovery				
VFR Departure				VFR Approach				
#	Callsign		Pilot		IFF	TCN	LSR	NET
-1	Monster 1-1		Marsy		1411	1Y	1611	21/01
-2	Monster 1-2		Lenzi		1412	64Y	1612	21/02
-3	Monster 1-3		Toolface		1413	64X	1613	21/03

**LOADOUT**

A/A	A9M				GUN	100% CM	
A/G	7M282L, 2xC87, 2xC105				CHF	0	
POD	A184, TGP				FLR	480	
TKS					FUEL	100%	

**TOLD**

	Takeoff	Target	Joker	Bingo	Land
FUEL	11087				

**AIRBASES**

	Name	TCN	ATIS	GND	TWR	RWY	Elev	ILS
Dep	Rovaniemi	14X	282.8	282.5	250.55	21	643	111.7
Arr	Rovaniemi	14X	282.8	282.5	250.55	21	643	111.7

**FLIGHTPLAN**

#	Name	Navaid/Coords/DME	ALT	TOT
1	IMARI	N66 28.406 E025 31.291		
2	PERUN	N66 44.135 E026 01.630		
3	HOLDING	N66 27.265 E023	12000	
4	STATIC1	N66 38.568 E023 07.986		
5	STATIC2	N66 38.538 E023 08.700		
6	STATIC3	N66 35.028 E023 00.852		
7	MOVING4	N66 19.596 E022 50.268		
8	MOVING5	N66 18.534 E023 11.346		
9	MOVING6	N66 14.118 E022 57.210		
10	OUTPOST7	N66 04.308 E023 15.042		
11	MOVING8	N65 59.778 E023 16.320		
12	MOVING9	N65 52.404 E023 04.080		
13	IMARI	N66 28.406 E025 31.291		
14	SIERRA	N66 25.711 E025 46.610		
15	RVNInit03	N66 28.793 E025 44.105		
16	PERUN	N66 44.135 E026 01.630		
17	VIKA	N66 37.474 E026 13.557		
18	RVNInit21	N66 38.642 E025 58.682		

**COMMS**

Radio	Usage
1	132.15
2	2-4-16-2-4
3	32,00

## NOTES

Departure via IMARI (RW21) oder PERUN (RW03).  
HOLDING im Norden von ESR03.

STATIC-Targets: Attack SOUTH to NORTH

MOVING/OUTPOST: Attack NORTH TO SOUTH

Unterschiedliche HOF (Height of Function) ausprobieren.

Off-Turns nach Westen (Ausnahme MOVING5: Osten)! Danach zurück in Holding.

Targets:

- \* STATIC1 - 4x MLRS BM-21 Grad
- \* STATIC2 - 4x MLRS 9A52 Smerch
- \* STATIC3 - 8x SSM 9P117 Scud B
- \* MOVING4 - 1x Jeep, 12xTruck, 3xSA9
- \* MOVING5 - 8xMBT T90, 2xSA19
- \* MOVING6 - 8xIFV BMP-3
- \* OUTPOST7 - 2xSA19, 2xSA18, 4xZu-23
- \* MOVING8 - 8xAPC BTR-82A, 2xZSU-23-4 Shilka
- \* MOVING9 - 3xSpeedboat

**OTHER FLIGHTS**

Callsign	Mission	Airframe	Freq	TCN	Grpld	Laser
Rattler 7	Training	4x AH-64D	133.5	1/64		125X
AO		Task				

## RADIO CHANNELS

#	Freq	Name
1		Flight/Squadron specific
2	282.8	Rovaniemi ATIS
3	282.5	Rovaniemi Ground
4	250.55	Rovaniemi Tower
5	320.7	Bodo ATIS
6	250.75	Bodo Tower
7	235.45	Kallax ATIS
8	250.3	Kallax Tower
9	265.0	Texaco-1   KC-135   Medium / Slow   71Y
10	319.8	Arco-1   KC-135   High / Fast   22Y
11	360.8	Shell-1   KC-135 MPRS   High / Fast   41Y
12	304.0	CVN-71 Rough Rider (RRR)   71X
13	303.0	LHA-1 Tarawa (TWA)   79X
14	247.8	S-3B Mauler-1 (MAU)  64Y
15	347.8	Loki (E-2D)
16	348.7	Heimdall (E-3A)
17	242.17	ESR02 - CAS Range Operator
18	34.7	ESR02 - JTAC Odin
19	270.5	Blue
20	270.75	Red

**RAMROD**

0	1	2	3	4	5	6	7	8	9
D	E	M	O	G	R	A	P	H	Y

**KTC 1400 C**

	0	1	2	3	4	5	6	7	8	9
A	FXQM	HUA	JKN	GE	DB	TVO	CW	IS	PR	YL
B	IKWH	DPU	NLE	TY	OX	GQB	AF	CM	JV	SR
C	PXLH	AEG	OIR	MN	QV	WDF	JU	KC	SY	BT
D	KEOC	DSH	RGX	UV	YF	BPN	MA	TI	QW	LJ
E	OSEY	VXC	DAN	LM	PR	QGF	BU	HT	IK	WJ
F	KVCL	STH	RWJ	OF	ED	BUP	NA	IY	XM	QG
G	APIB	NKT	LSF	RY	GD	EXH	JO	VM	WU	QC
H	MELH	KWC	VID	TB	GR	OYF	PX	JA	US	NQ
I	VMQW	LGO	CRH	JN	AD	FIY	BT	PE	SU	KX
J	RANG	PUF	IDO	CW	SX	MLV	BJ	TY	HE	KQ
K	IQUT	OJN	CSD	WK	PM	AFR	EY	VX	HB	LG
L	OWQG	AJP	YLN	DX	TM	VIH	UK	BS	EF	RC
M	VMAP	WNG	KJF	UB	HR	OLI	YS	CX	EQ	DT
N	DYVM	JAW	XCG	KL	NB	TFR	QP	UO	IH	ES
O	STPB	RXA	VOC	JN	KU	DFI	HQ	LW	EM	YG
P	HMCD	EWV	FXY	SG	AB	JOK	NR	TU	PI	LQ
Q	YAUE	COW	NIB	XQ	SG	JKL	PV	DF	HT	MR
R	GNKA	CQO	JHF	IP	MD	VYR	EU	BW	LX	TS
S	GVQE	USH	JCT	NR	IY	MDF	WP	LX	KB	AO
T	HYIW	UCD	EXM	QS	OL	GJK	TR	BP	FA	NV
U	SYWK	OMA	ERV	FI	TQ	JGX	UP	NC	LD	HB
V	GYPW	UCH	OAB	SK	LV	JNF	RQ	TX	EI	MD
W	GREV	HSL	DNP	TQ	FO	WUA	IB	KC	JX	YM
X	GHVI	DLJ	XWF	MY	CO	REK	SA	PB	TN	QU
Y	KUDX	GTE	QSY	LO	PN	IAF	VR	JH	MC	WB

**NAVAIDS**

Id	Name	Channel	Position	Elevation
BOO	Bodo	45	N67 15.838 E014 20.046	43
BNK	Banak	47	N70 03.937 E024 58.181	17
OYA	Andoya	28	N69 17.175 E016 08.658	19

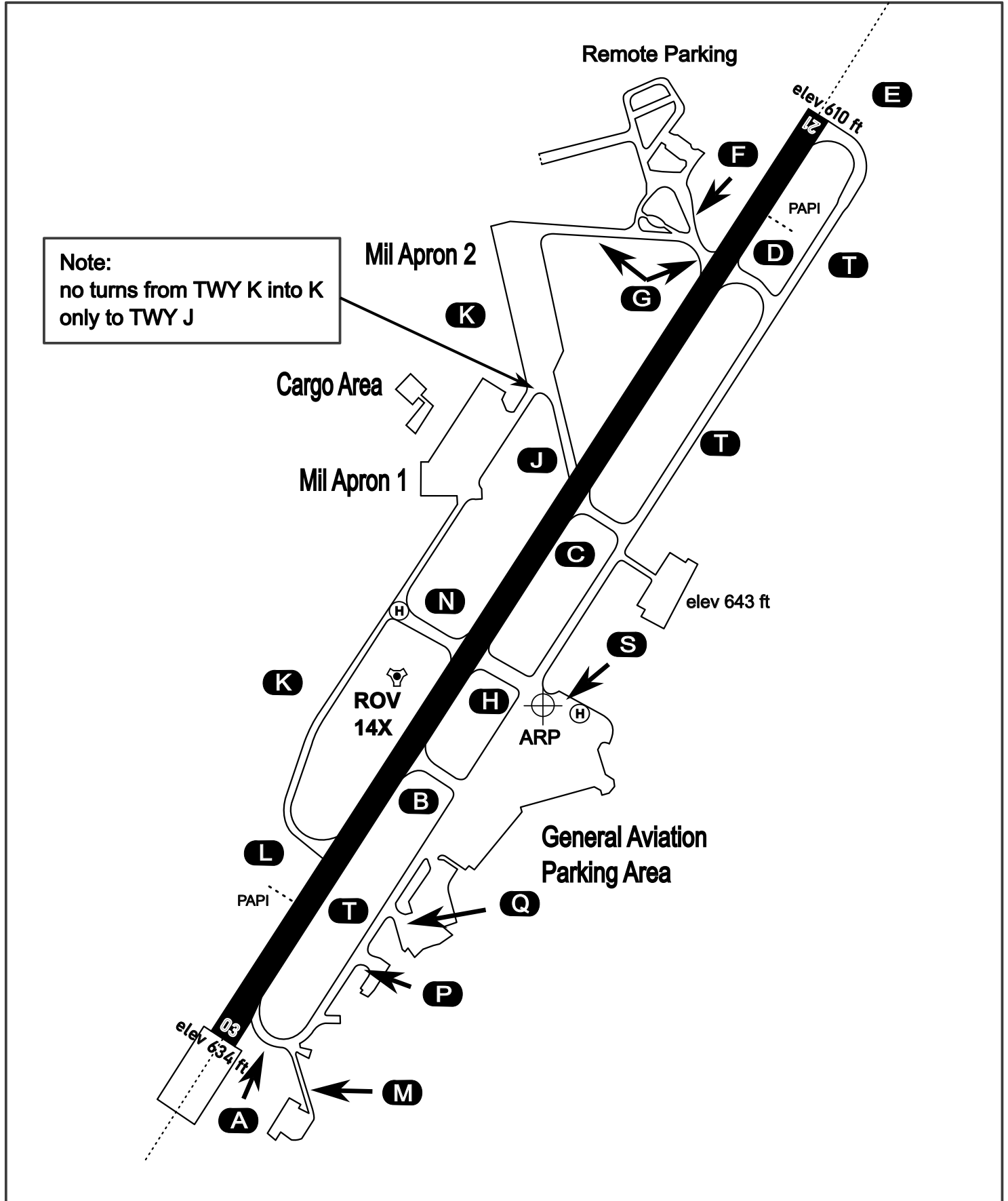
# AERODROME CHART

Rovaniemi Aerodrome

ARP N66° 33' 42" E025° 49' 51"

elev 643 ft

## ROVANIEMI, FINLAND



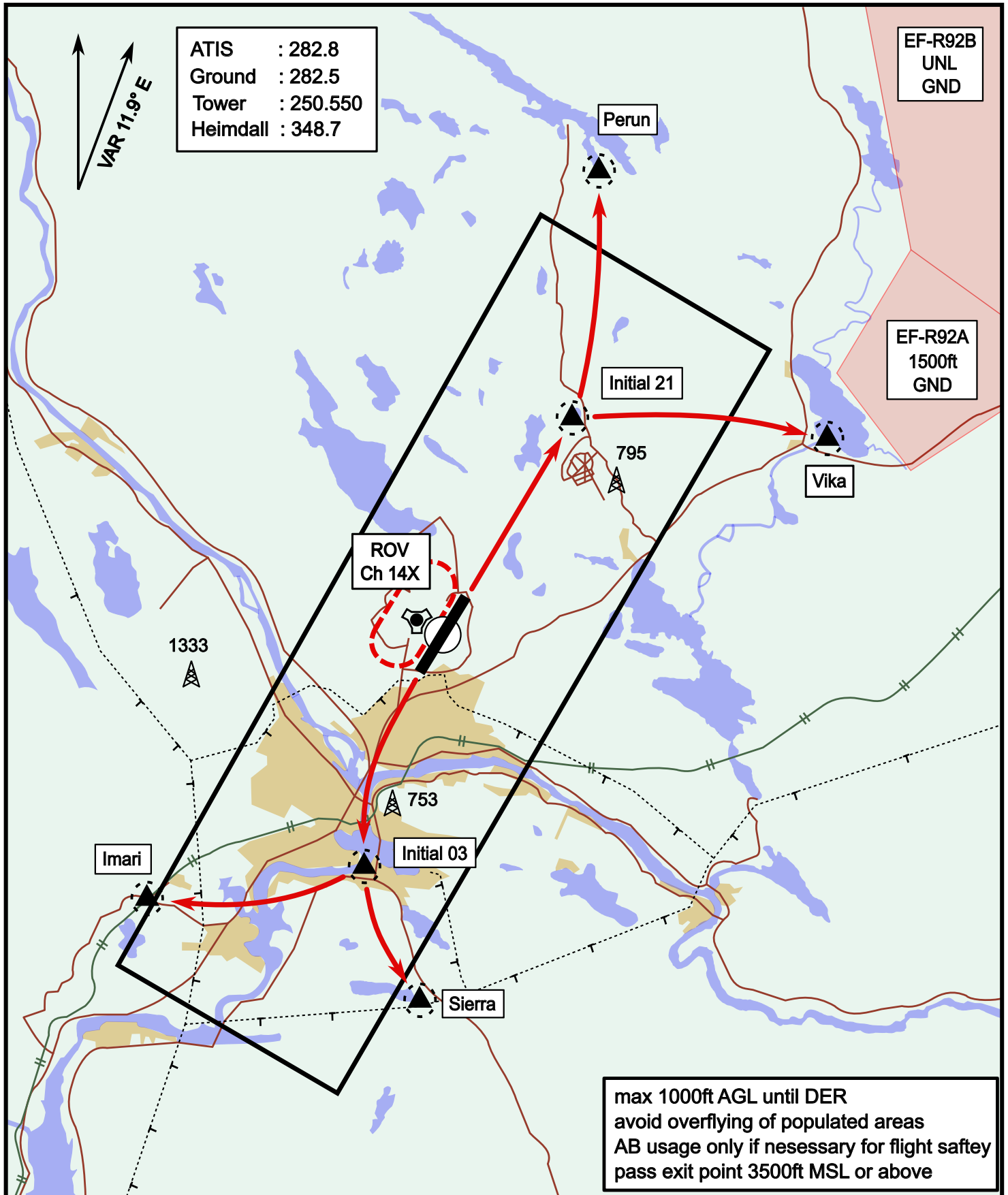
ATIS	Ground	Tower	Radar
282.800	282.500	250.550	348.700



# Visual Departure Jet

elev 643 ft

# Rovaniemi, Finland



Vika	N66° 37.474 / E026° 13.557	Sierra	N66° 25.711 / E025° 46.610
Perun	N66° 44.135 / E026° 01.630	Imari	N66° 28.406 / E025° 31.291
Initial21	N66° 38.421 / E025° 58.682	Initial03	N66° 28.793 / E025° 44.105

# Visual Approach Jet

elev 643 ft

# Rovaniemi, Finland



Vika	N66° 37.474 / E026° 13.557	Sierra	N66° 25.711 / E025° 46.610
Perun	N66° 44.135 / E026° 01.630	Imari	N66° 28.406 / E025° 31.291
Initial21	N66° 38.421 / E025° 58.682	Initial03	N66° 28.793 / E025° 44.105