

**MISSION DATA CARD**

OPORD		Callsign		Mission		Date/Time		
3683/2025		Nazgul 6		Training		212136FEB25		
Task						Freq		
AO						262.45		
Departure				Recovery				
SID RWY 21				VFR Approach				
#	Callsign		Pilot		IFF	TCN	LSR	NET
-1	Nazgul 6-1		Tank		1161	1Y	1561	

**LOADOUT**

A/A						GUN	
A/G						CHF	
POD						FLR	
TKS						FUEL	

**TOLD**

	Takeoff	Target	Joker	Bingo	Land
FUEL	22588				

**AIRBASES**

	Name	TCN	ATIS	GND	TWR	RWY	Elev	ILS
Dep	Rovaniemi	14X	282.8	282.5	250.55	21	643	111.7
Arr	Rovaniemi	14X	282.8	282.5	250.55	21	643	111.7
Div	Bodo	45X	320.7		250.75	25	19	110.3

## RADIO CHANNELS

#	Freq	Name
1		Flight/Squadron specific
2	282.8	Rovaniemi ATIS
3	282.5	Rovaniemi Ground
4	250.55	Rovaniemi Tower
5	320.7	Bodo ATIS
6	250.75	Bodo Tower
7	235.45	Kallax ATIS
8	250.3	Kallax Tower
9	265.0	Texaco-1   KC-135   Medium / Slow   71Y
10	319.8	Arco-1   KC-135   High / Fast   22Y
11	360.8	Shell-1   KC-135 MPRS   High / Fast   41Y
12	304.0	CVN-71 Rough Rider (RRR)   71X
13	303.0	LHA-1 Tarawa (TWA)   79X
14	247.8	S-3B Mauler-1 (MAU)  64Y
15	347.8	Loki (E-2D)
16	348.7	Heimdall (E-3A)
17	242.17	ESR02 - CAS Range Operator
18	34.7	ESR02 - JTAC Odin
19	270.5	Blue
20	270.75	Red

**RAMROD**

0	1	2	3	4	5	6	7	8	9
D	E	X	T	R	O	U	S	L	Y

**KTC 1400 C**

	0	1	2	3	4	5	6	7	8	9
A	OBSG	HWF	LKR	YT	DM	XQP	AJ	EN	UV	CI
B	UAKI	MLY	BEQ	TX	FC	WJH	NP	SD	RO	GV
C	XGJS	IDY	QBL	TK	WH	MEP	OA	NF	CR	UV
D	SJTY	MFK	GDL	PV	AR	IBE	HO	CX	WU	NQ
E	ELBV	SJX	KMC	GH	DU	QIN	FR	TY	PW	AO
F	ECYK	IAP	WQD	MF	TV	RBG	LS	NX	HO	UJ
G	HNAE	COL	DYP	VM	BQ	TFX	SU	RI	JW	GK
H	WNMR	TIB	OEX	YJ	KH	SLF	DQ	AV	CP	GU
I	UXTW	ADM	NHG	CL	RQ	KFV	EP	IO	JY	BS
J	PAQK	GCI	HFJ	TE	XO	LND	RS	WM	BY	UV
K	GFID	NWO	SBQ	KL	JE	CTP	VM	RX	UY	AH
L	LWFB	HRT	IAE	YM	NV	GSX	DC	KU	JP	OQ
M	TYBJ	QLV	NMI	UP	RG	KSC	OA	EW	FD	HX
N	BCXG	PRI	NHQ	DV	TJ	FYO	UL	SM	KA	EW
O	KDOV	QBL	YMP	SG	NE	AHI	UJ	CT	XR	FW
P	CTXL	WUF	YPD	KQ	SB	EIO	JM	VR	GA	NH
Q	KJRX	VUM	FWP	AI	TN	OHC	SG	EQ	BL	YD
R	UAJS	MON	XVK	RD	BI	WET	YH	GQ	PL	FC
S	XDLB	VOY	JAQ	MR	FT	WCI	UK	SP	GH	EN
T	HEVY	XPN	WKU	DA	BG	SIR	CM	TL	JQ	OF
U	UDOW	VFB	YTR	IX	GN	ECP	LK	AM	HJ	SQ
V	RHAD	YOE	JUL	SM	VK	XBQ	WP	CI	GT	FN
W	XOFN	BCV	YHS	KT	GL	DJE	AU	IW	PR	MQ
X	DFST	MGE	CJN	QX	AO	HPB	KY	VR	UI	LW
Y	SWDM	GJU	HLV	PE	KY	FRI	CO	AB	XT	QN

**NAVAIDS**

Id	Name	Channel	Position	Elevation
BOO	Bodo	45	N67 15.838 E014 20.046	43
BNK	Banak	47	N70 03.937 E024 58.181	17
OYA	Andoya	28	N69 17.175 E016 08.658	19

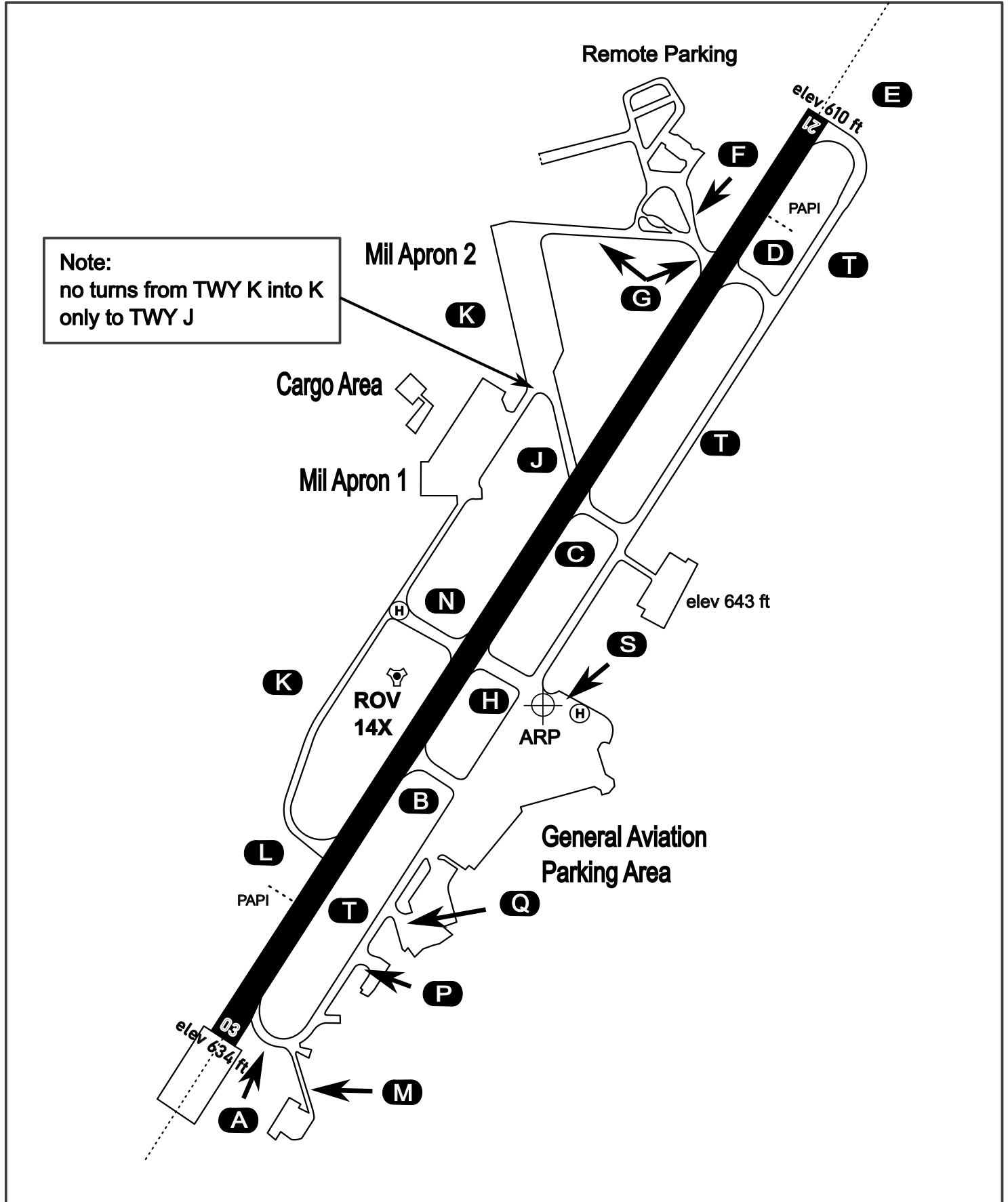
# AERODROME CHART

Rovaniemi Aerodrome

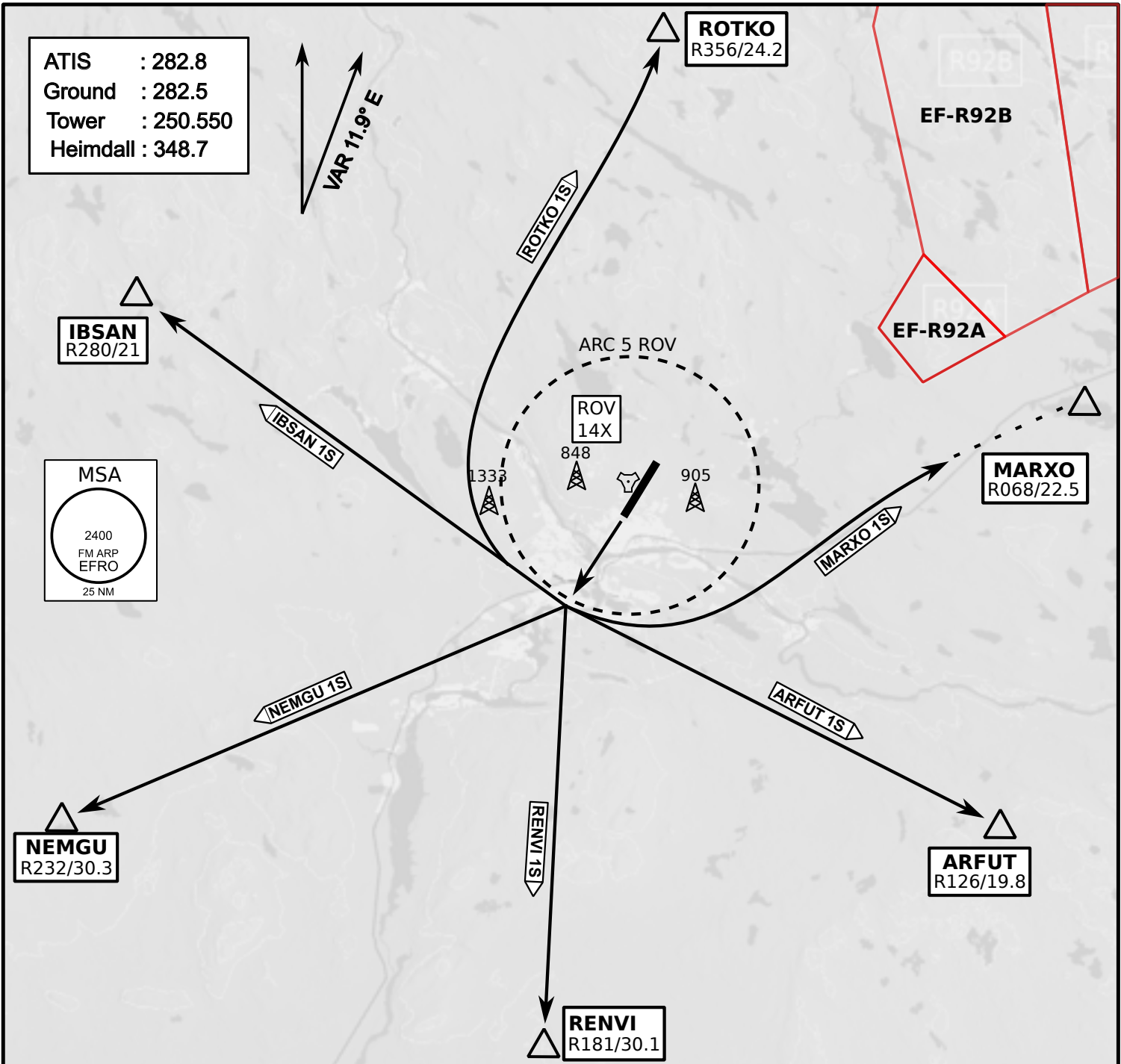
ARP N66° 33' 42" E025° 49' 51"

elev 643 ft

## ROVANIEMI, FINLAND



ATIS	Ground	Tower	Radar
282.800	282.500	250.550	348.700

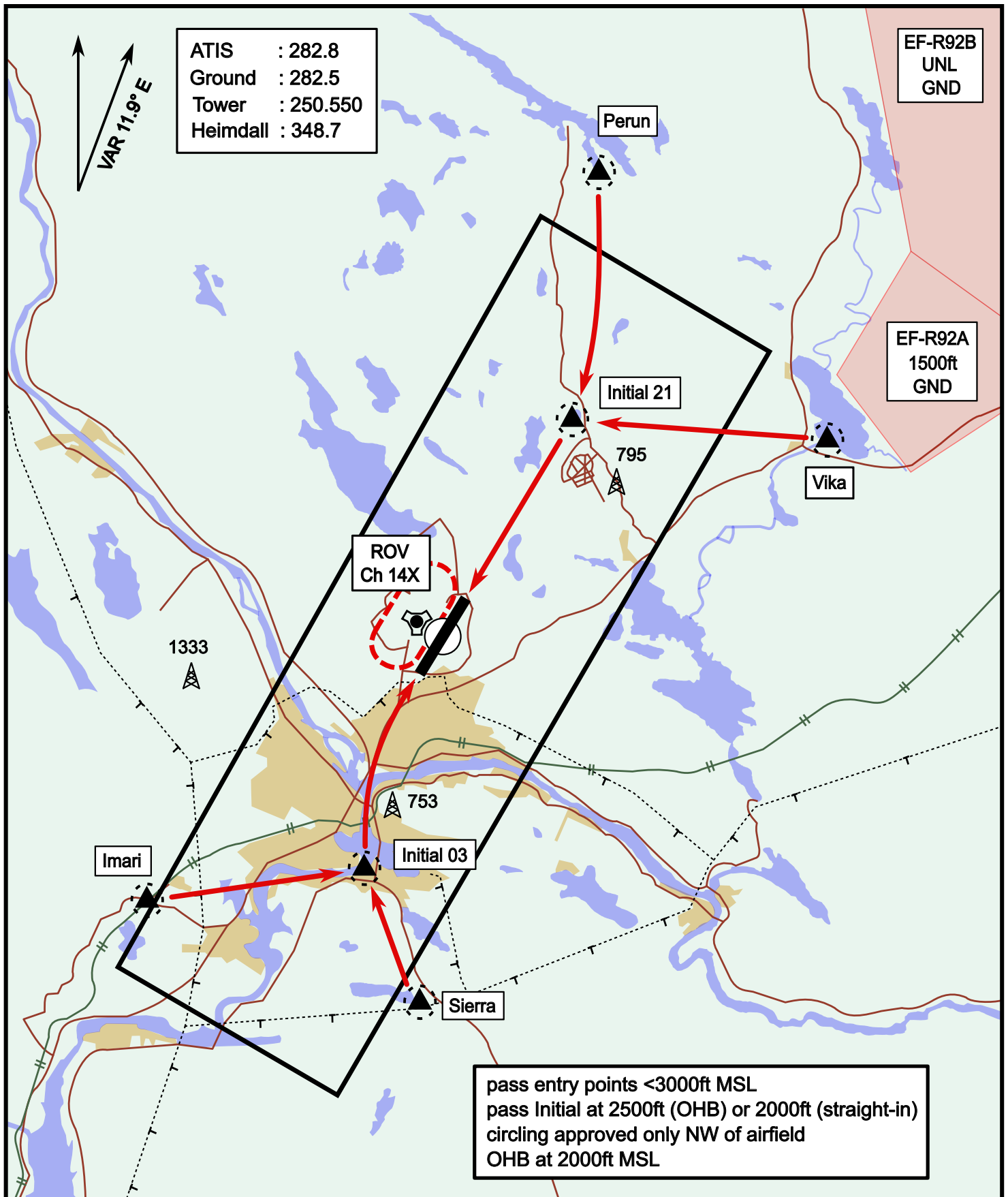


- Climb on Rwy heading to min A2000ft
- when passing A2000ft OR 5 DME ROV (whichever is later) turn direct exit point
- Stay outside ARC 5 ROV
- AB usage only if necessary for flight safety

# Visual Approach Jet

elev 643 ft

# Rovaniemi, Finland



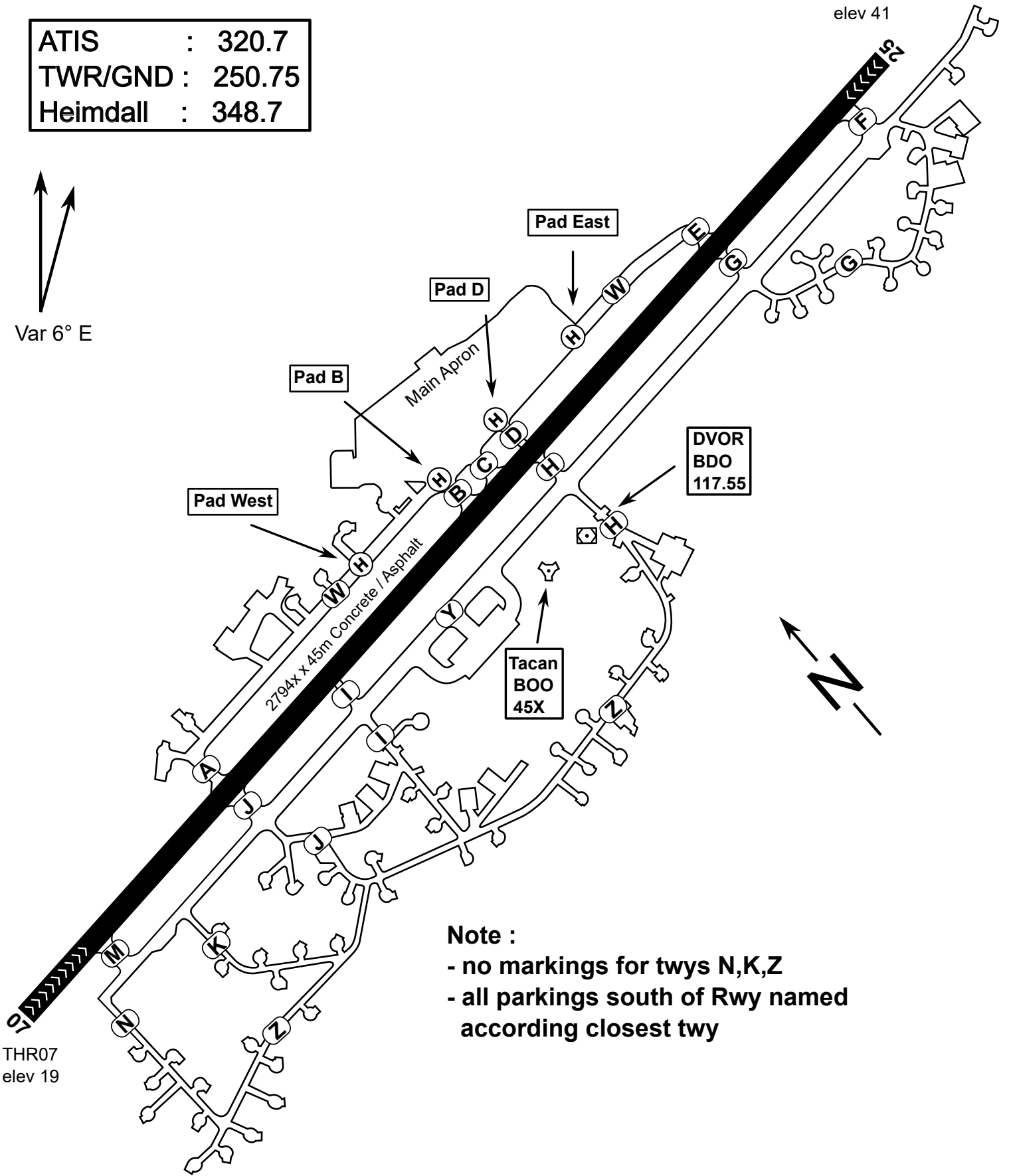
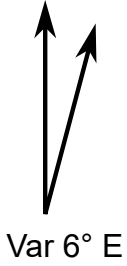
Vika	N66° 37.474 / E026° 13.557	Sierra	N66° 25.711 / E025° 46.610
Perun	N66° 44.135 / E026° 01.630	Imari	N66° 28.406 / E025° 31.291
Initial21	N66° 38.421 / E025° 58.682	Initial03	N66° 28.793 / E025° 44.105

**NOT AVAILABLE**



ATIS	: 320.7
TWR/GND	: 250.75
Heimdall	: 348.7

THR25  
elev 41



**Note :**

- no markings for twys N,K,Z
- all parkings south of Rwy named according closest twy