

MISSION DATA CARD

OPORD		Callsign		Mission		Date/Time	
3680/2025		Nazgul 1		Strike		142000MAR25	
Task	ATO 1030 - Southern Target					Freq	
AO	Syria					131.65	
Departure				Recovery			
VFR				VFR			
#	Callsign	Pilot		IFF	TCN	LSR	NET
-1	Nazgul 1-1	Striver		1111	1Y	1561	
-2	Nazgul 1-2	Tank		1112	64Y	1562	
-3	Nazgul 1-3	Repsus		1113	64X	1563	
-4	Nazgul 1-4	Xtern1		1114	1X	1564	

LOADOUT

A/A	2xA120C, 2xA9M			GUN	100% SAPHEI
A/G	4xM84			CHF	120
POD	TGT, NAV			FLR	60
TKS	2xFT610			FUEL	100%

TOLD

	Takeoff	Target	Joker	Bingo	Land
FUEL	30518	18000			2000

AIRBASES

	Name	TCN	ATIS	GND	TWR	RWY	Elev	ILS
Dep	Incirlik AFB	21X	377.47 5	371.35	360.1	5	190	
Arr	Incirlik AFB	21X	377.47 5	371.35	360.1	5	190	

FLIGHTPLAN

#	Name	Navaid/Coords/DME	ALT	TOT
1	INITIAL 23	N37 03.956 E035 31.866		
2	FALCON	N37 05.067 E035 40.888	2000	
3	RENDEZVOU Z	N37 04.700 E036 28.600	5000	
4	INGRESS	N36 55 E037 53	200 AGL	
5	STEER	N35 49.800 E038 24.100	200 AGL	
6	STEER 2	N34 49.800 E038 51.500	200 AGL	
7	IP	N34 32.899 E038 34.700	200 AGL	
8	TARGET EL1	N34 36.948 E038 15.244	1640	
9	TARGET EL2	N34 36.846 E038 15.182	1624	
10	TERRAIN	N34 52.700 E038 11	200 AGL	
11	STEER 3	N35 49.300 E038 24.800	200 AGL	
12	EGRESS	N36 48.800 E037 53.800	200 AGL	
13	EAGLE	N36 52.938 E035 21.611	2500	
14	INITIAL 05	N36 56.654 E035 19.839	2000	

COMMS

Radio	Usage
1	ATIS 1-> GND 2-> TWR 3->13 Overlord => Push 12 Wizard after call Texaco 1 6
2	131.65 Dragon 1 131.10

NOTES

Wizard: ATO 1030 Deep Strike (Dragon 1 & Nazgul 1) and ATO 1060 CAP (Mako 6 and Mustang 2)
Overlord: Der Rest

Codeword Meaning

Fanta Push all SEAD Flights
Sprite SEAD successful
RedBull SEAD unsuccessful
Pepsi Strike successful
Mate Strike unsuccessful

#Lage Eigene:

Package:

Nazgul-1, 4-ship F-15E @ Incirlik AFB
Dragon-1, 4-ship F-14B @ CVN-73
Mako-6, 4-ship F-16C @ Incirlik AFB
Mustang-2, 4-ship F-16C @ Incirlik AFB
Wizard, E-3

#Lage Feind:

A/C: MiG-29A, MiG-25, MiG-21 als Alarmrotten, keine ständigen CAPs
AA: AAA und SA-8 im Zielgebiet, SA-10 östlich

#Auftrag Nazgul-1:

Tiefflug von WYPT 2 über Ziel (WYPT 7&8) bis WYPT 11 und Zerstören von Gebäuden an WYPT 7&8

#Durchführung:

Parking between HOTEL and INDIA Loop, Request Taxi to Last Chance and wait for MAKO and MAGNUM
GND and TWR active

T/O Incirlik NLT 0615 nach MAKO und MAGNUM

-Interval T/O 10 s, MAX, Flaps down, ROT 165 KCAS

-After T/O 300 KCAS until HOLDING HANDS in PARADE, 50 KCAS overtake

VFR DEPARTURE via INITIAL 23 & FALCON zu RENDEZVOUS an WYPT 3

PUSH WYPT 3 NLT 0645 (0630) [0615] at 200 ft AGL w/ 550 GS (TFR in ECCM)

-Broad CRUISE, if unable split elements

-Fence in A/G, Nose Cold

-Consider Rolex -15 if CAPs are quick => Push (0630)

-Consider Rolex -30 if CAPs are quick => Push [0615]

TOSS (MAX) 4x MK-84 auf Ziele

-TOT 0710+5 (0655+5) [0640+5]

-FINAL ATTACK HEADING: 280 +- 5 °M

-AUTO, RIPPLE SGL, TAIL w/ BOT CTR, INTVL SEE BELOW, LOFT (MAX)

-Nazgul 1-1 und 1-2: ATO1030-T9, -T10, -T11 (WYPT 8)

---INTVL 70 ft

-Nazgul 1-3 und 1-4: ATO1030-T12, T-13 (WYPT 9)

---INTVL 50 ft

Nach Abwurf SAFE ESCAPE RIGHT (NO A/B!, FLARES!) und Route folgen mit 200 ft AGL w/ 550 GS (TFR in ECCM)

Timetable

WYPT 4: 0700 (0645) [0630]

WYPT 5: 0707 (0652) [0637]

IP: 0709 (0654) [0639]

TOT: 0711 (0656) [0641]

Einsatzunterstützung:

TEXACO-1 verfügbar zwischen WYPT 1 und 2

Führung:

ATO1030 auf Wizard 355.6

BOX 1 AND 2 SWITCHED

Preset Operator Freq Tacan ICLS / ILS / Link4

1 Incirlik ATIS 377.475

2 Ground 371.350

3 Tower 360.100 21X 111.70 Mhz

5 R05 - HMS Invincible 304.000 78X

6 Texaco-1 (KC-135) 248.700 11Y

7 Texaco-2 (KC-135) 249.700 14Y

12 Wizard 355.600

13 Overlord 377.800

SUPPORT**Tanker**

Callsign	TCN	Freq	ALT	TAS
TEXACO 1	71Y	265.0	FL170	300
	Pos	TEXACO1: (N3657 E03434)		

AWACS

Callsign	Freq	ALT	Pos
OVERLORD2	377.8	FL320	N3713 E03643 - N3714 E03749

OTHER FLIGHTS

Callsign	Mission	Airframe	Freq	TCN	Grpld	Laser
Tiger 1	DEAD	4x F/A-18C	261.15	1/64	1	155X
AO	Al Safira 260B280	Task	ATO 1050 DEAD			
Joker* 1	Transport	4x CH-47F	133.75	1/64		170X
AO		Task				
Raptor 1	SEAD	4x F-16C	130.5	1/64		162X
AO	Al Safira	Task	ATO 1050 SEAD			
Knight* 6	Strike	4x F/A-18C	264.05	1/64		170X
AO	Aleppo	Task	ATO1010			
Rattler 5	Training	4x AH-64D	133.5	1/64		125X
AO	ATO 1020	Task	CAS			
Raptor 3	Strike	2x F-16C	130.7	5/68		169X
AO	Al Safira	Task	ATO 1050 STRIKE			
Raptor 7	Training	4x F-16C	129.3	1/64		170X
AO	Mako 6	Task	ATO 1060			
Devil* 4	CAS	4x A-10C	132.55	1/64		164X
AO	Minakh AB	Task	ATO 1020 CAS			
Monster 1	CAS	4x A-10C	132.15	16/79	21	161X
AO	Minakh Airfield	Task	Air Assault Minakh Airfield			
Panther 3	Training	4x F/A-18C	261.35	1/64		157X
AO	ATO1010	Task	SEAD			

RADIO CHANNELS

#	Freq	Name
1		Flight/Squadron specific
2	288.2	Akrotiri ATIS
3	240.1	Akrotiri Ground
4	339.85	Aktrotiri Tower
5	335.05	Akrotiri Approach
6	360.1	Incirlik Tower
7	371.35	Incirlik Ground
8	377.475	Incirlik ATIS
9		No Preset
10	127.3	Paphos ATIS
11	353.8	Paphos Tower
12	304.0	CVN-73 George Washington
13	302.0	LHA-1 Tarawa
14	259.0	CV-59 Forrestal
15		No Preset
16	377.8	Overlord
17	265.0	KC-135 Texaco-1 medium/slow
18	319.8	KC-135 Arco-1
19	360.8	KC-135MPRS Arco-2
20	256.0	S-3B Recovery Tanker

RAMROD

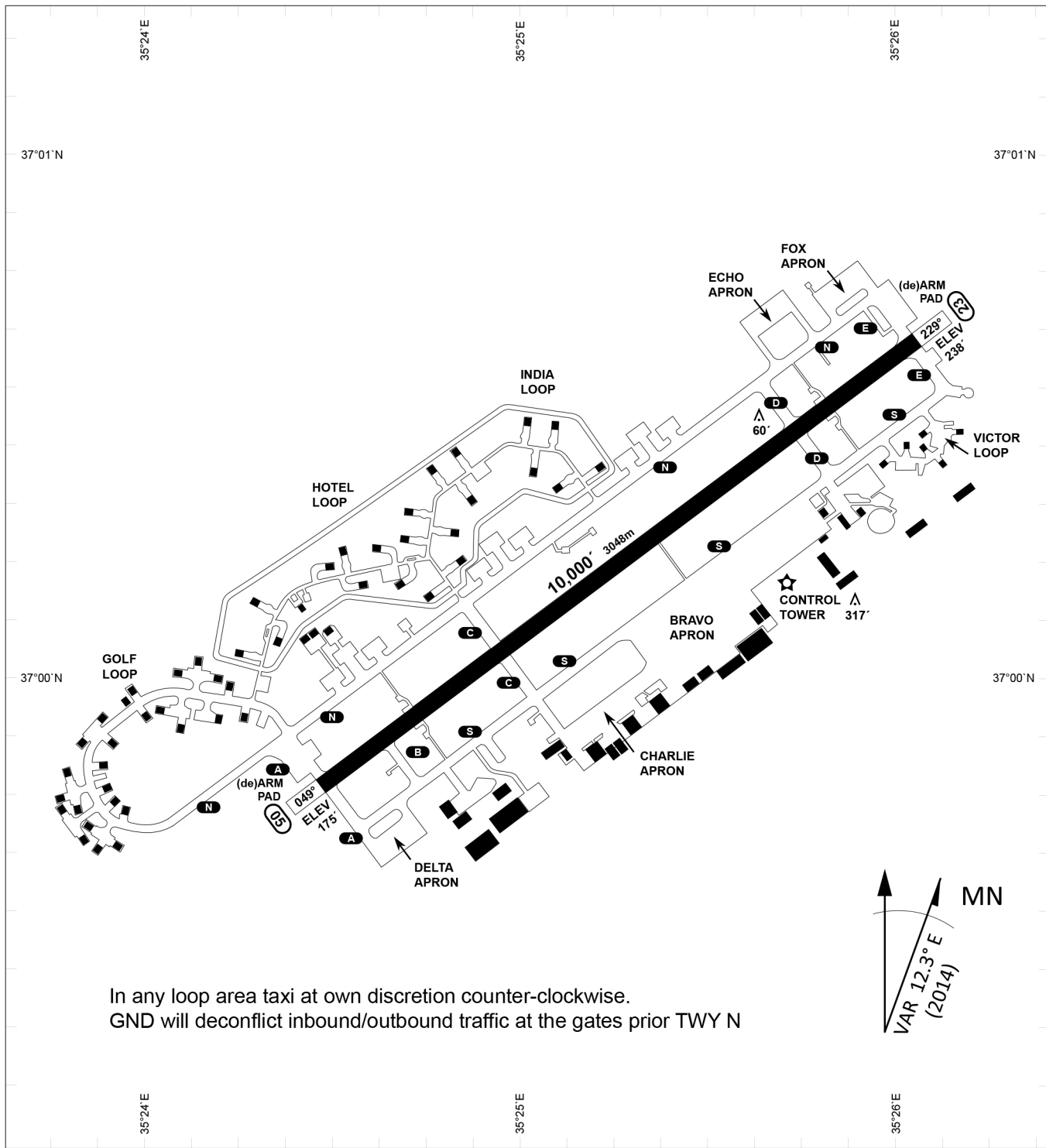
0	1	2	3	4	5	6	7	8	9
H	A	R	M	O	N	I	Z	E	D

KTC 1400 C

	0	1	2	3	4	5	6	7	8	9
A	TBDY	AVR	XPJ	GQ	UE	MWO	HN	CS	LF	KI
B	ASJQ	FKB	RIU	GW	HO	EVX	LM	NT	CP	YD
C	THXB	YUK	PLS	MG	DW	QAR	EV	IF	CO	JN
D	AOBG	RSW	KUH	LJ	DC	IQN	PM	XT	VY	FE
E	PEBF	JVX	KQL	CN	TW	OGY	AH	UR	SI	DM
F	YPXL	MNK	FWA	QS	IE	DTB	HU	VR	JG	CO
G	MLJR	KCQ	EUT	YB	PI	HXW	GA	FS	DV	NO
H	IHQU	JYT	BVC	RP	GE	MDF	LO	SX	NW	AK
I	NKBH	IDE	YTS	XU	WV	RJF	MG	LP	OQ	CA
J	OPQK	IHN	RJB	MU	WD	CEA	LY	VS	GT	XF
K	UOEY	GFX	PRH	QK	SI	BDJ	CN	VW	LT	AM
L	KBRG	WFS	UXL	VO	EC	PDM	YA	HQ	NI	TJ
M	GLHO	MKU	SCW	VP	ED	QRB	FY	TJ	IN	AX
N	KYEH	BUC	MTO	XG	VS	WPL	IN	FD	QR	JA
O	UNPA	KQR	TJW	HD	YG	FLM	OI	VC	SB	EX
P	YCSO	LGW	QBE	FT	MX	DUK	JA	HV	IP	RN
Q	WDCS	QVY	UPT	BI	XK	GOR	HJ	NE	FA	ML
R	CIYJ	DGV	BUQ	NH	OE	APF	SL	RM	TX	WK
S	KPGF	OIU	TQY	DL	XH	CWA	EJ	BM	RS	NV
T	IHPL	WAT	XMG	QC	JB	EOK	UF	RN	SV	YD
U	IRHL	USD	KCY	OG	FW	XME	VN	QA	TB	PJ
V	JISG	AWX	OBU	TH	LK	MYF	RQ	EV	DP	CN
W	TEXD	RNF	KGQ	JU	MV	IAC	LP	WO	SH	BY
X	TOGA	SWM	HIL	YQ	FN	EUC	PB	JX	RD	KV
Y	JXYT	IEB	NRH	GP	WL	UMO	SQ	FV	KA	DC

NAVAIDS

Id	Name	Channel	Position	Elevation
DAN	Incirlik	21	N37 00.950 E035 26.883	243
AKR	Akrotiri	107	N34 34.765 E032 57.769	147
PHA	Paphos	79	N34 42.997 E032 28.963	35
RMD	Ramat David	84	N32 39.892 E035 11.265	136
OS66	Kuweires Military Aviation Institute	36	N36 11.362 E037 34.226	1200



In any loop area taxi at own discretion counter-clockwise.
 GND will deconflict inbound/outbound traffic at the gates prior TWY N

PAR	RWY	CAT	MINIMA	ARP	ELEV	Scale 1:35'500
	21L	A B D E	2057 - 0.8 200 (200-0.8/1.6) GS 3°	37°0'56.000" N 35°26'53.000" E	1857 [ft]	0 300 600 900 1200 1500 [m] 0 1000 2000 3000 4000 5000 [ft]
	3R	A B D E	2057 - 0.8 200 (200-0.8/1.6) GS 3°		566 [m]	
SRA	21R	A C D E	2257 - 1.2 350 (350-1.2/1.6)			
	3L	A C D E	2257 - 1.2 350 (350-1.2/1.6)			

RWY	TORA	TORA from D	TORA from B	COURSE	PSN THR	ALS
23	10,000 [ft] 3048 [m]	8,000 [ft] 2438 [m]		235°	37°00.611'N 035°26.368'E	⊙
05	10,000 [ft] 3048 [m]		9,000 [ft] 2743 [m]	055°	36°59.043'N 035°24.760'E	⊙

ATIS	INCIRLIK GROUND	INCIRLIK TOWER	CONTROL	TACAN	ILS RWY 05	ILS RWY 23
377.475	371.350 123.020	360.100 121.100	337.800	DAN21x	109.3MHz	111.7MHz

ATIS
377.475 (#8)

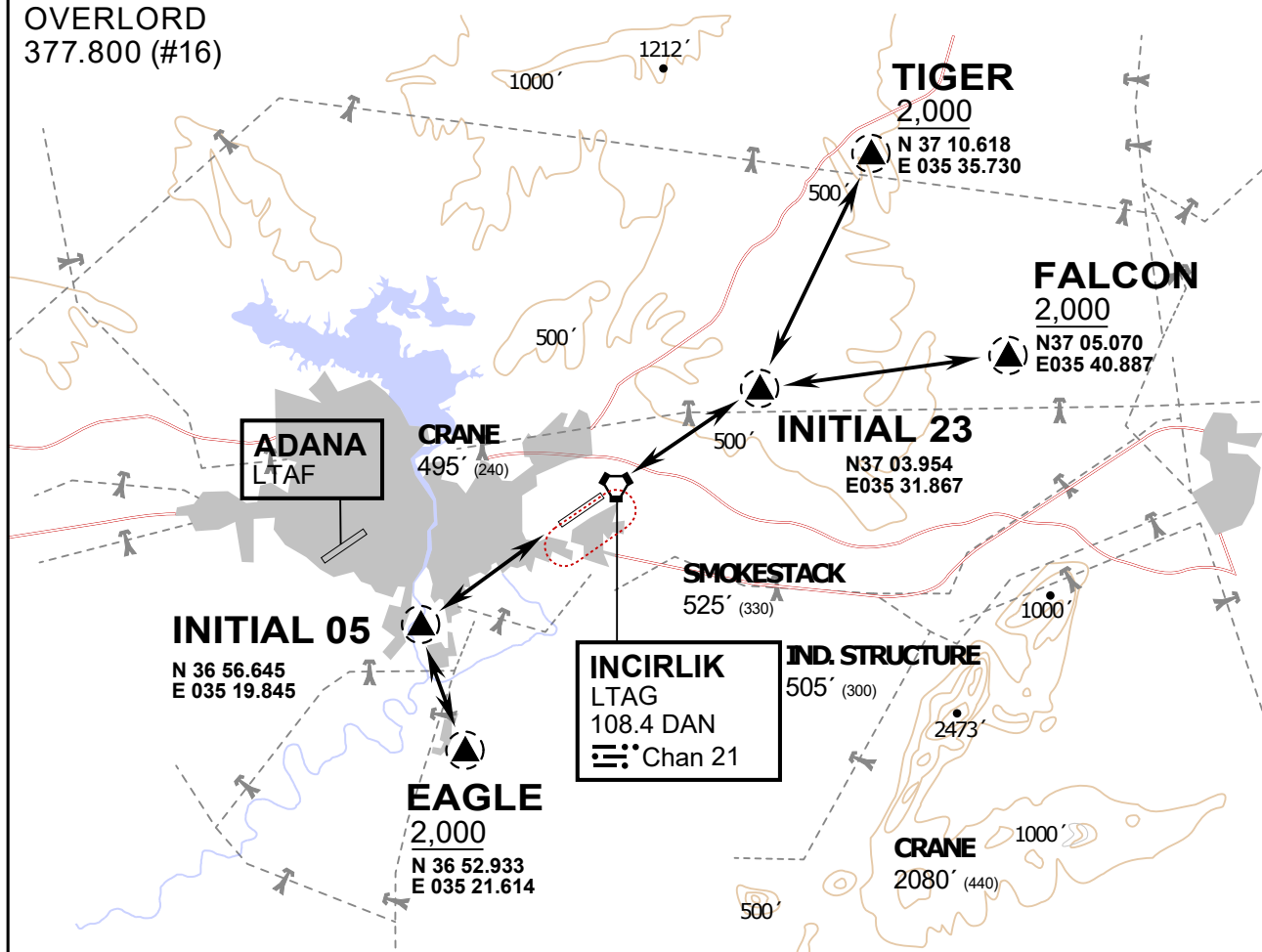
INCIRLIK GROUND
371.3500 (#7)

INCIRLIK TOWER
360.100 (#6)

OVERLORD
377.800 (#16)

NOT FOR CIVIL USE

CAUTION: If unable to comply
with restrictions advise ATC
prior to departure.



vJaBoG32 ETTR NAV CHART



ARR / DEP ROUTE DESCRIPTION

STRAIGHT-IN RWY 05 / 23

Pass entry EAGLE / TIGER / FALCON at 2000' and INITIAL at 1500'

OVERHEAD BREAK RWY 05 / 23

Pass entry EAGLE / TIGER / FALCON at 2500',
pass INITIAL at 2000' break to the south at 2000' pattern altitude.

HELICOPTER ROUTES

Pass entry EAGLE / TIGER / FALCON at 1000' or below, pass INITIAL at 1000' break to the south at 1000' pattern altitude.

DEPARTURE ALL DIRECTIONS

pass DER below 1500ft

ATIS
377.475 (#8)

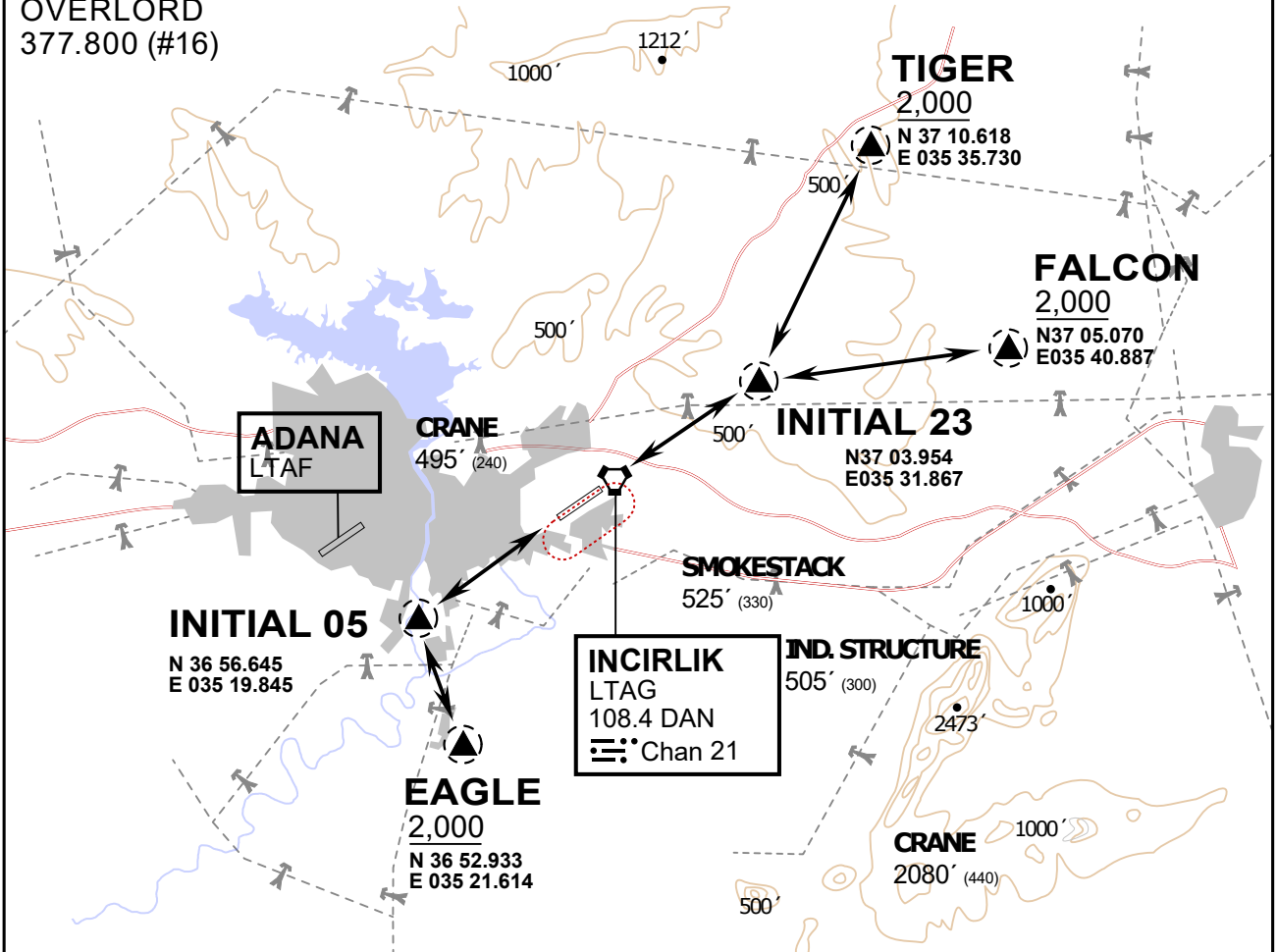
INCIRLIK GROUND
371.3500 (#7)

INCIRLIK TOWER
360.100 (#6)

OVERLORD
377.800 (#16)

NOT FOR CIVIL USE

CAUTION: If unable to comply with restrictions advise ATC prior to departure.



vJaBoG32 ETTR NAV CHART

ARR / DEP ROUTE DESCRIPTION

STRAIGHT-IN RWY 05 / 23

Pass entry EAGLE / TIGER / FALCON at 2000' and INITIAL at 1500'

OVERHEAD BREAK RWY 05 / 23

Pass entry EAGLE / TIGER / FALCON at 2500', pass INITIAL at 2000' break to the south at 2000' pattern altitude.

HELICOPTER ROUTES

Pass entry EAGLE / TIGER / FALCON at 1000' or below, pass INITIAL at 1000' break to the south at 1000' pattern altitude.

DEPARTURE ALL DIRECTIONS

pass DER below 1500ft