

**MISSION DATA CARD**

OPORD		Callsign		Mission		Date/Time		
3679/2025		Nazgul 6		Training		202000FEB25		
Task	ACM Training					Freq		
AO	ESR02					262.45		
Departure				Recovery				
VFR Depature				VFR Approach				
#	Callsign		Pilot		IFF	TCN	LSR	NET
-1	Nazgul 6-1		Striver/UTA		1161	1Y	1561	
-3	Nazgul 6-3		Razorback		1163	64X	1563	

**LOADOUT**

A/A	2xA120C, 2xA9M				GUN	100% SAPHEI
A/G					CHF	120
POD	TGT, NAV				FLR	60
TKS					FUEL	100%

**TOLD**

	Takeoff	Target	Joker	Bingo	Land
FUEL	22588				

**AIRBASES**

	Name	TCN	ATIS	GND	TWR	RWY	Elev	ILS
Dep	Rovaniemi	14X	282.8	282.5	250.55	21	643	111.7
Arr	Rovaniemi	14X	282.8	282.5	250.55	21	643	111.7

**FLIGHTPLAN**

#	Name	Navaid/Coords/DME	ALT	TOT
1	RVNInit21	N66 38.642 E025 58.682		
2	PERUN	N66 44.135 E026 01.630		
3	NAFFI	N67 04.630 E023 11.660	15000	
4	ENOXI	N66 54.960 E021 38.780	15000	
5	ITVAV	N66 44.630 E019 56.760	15000	
6	ESR02	N66 22 E019 26	15000	
7	IMARI	N66 28.406 E025 31.291		
8	RVNInit03	N66 28.793 E025 44.105		

**SUPPORT****Tanker**

Callsign	TCN	Freq	ALT	TAS
ARCO 1	22Y	319.8		
	Pos			

**AWACS**

Callsign	Freq	ALT	Pos
HEIMDALL	348.7		

**OTHER FLIGHTS**

Callsign	Mission	Airframe	Freq	TCN	Grpld	Laser
Tiger 1	Training	3x F/A-18C	261.15	1/64	1	155X
AO	ESR01	Task	SEAD / DEAD			
Panther 2	Training	3x F/A-18C	261.25	1/64	20	156X
AO	ESR01	Task	SEAD / DEAD			
Monster 1	Training	4x A-10C	132.15	1/64	21	161X
AO	ESR03	Task	CBU TRAINING			

## RADIO CHANNELS

#	Freq	Name
1		Flight/Squadron specific
2	282.8	Rovaniemi ATIS
3	282.5	Rovaniemi Ground
4	250.55	Rovaniemi Tower
5	320.7	Bodo ATIS
6	250.75	Bodo Tower
7	235.45	Kallax ATIS
8	250.3	Kallax Tower
9	265.0	Texaco-1   KC-135   Medium / Slow   71Y
10	319.8	Arco-1   KC-135   High / Fast   22Y
11	360.8	Shell-1   KC-135 MPRS   High / Fast   41Y
12	304.0	CVN-71 Rough Rider (RRR)   71X
13	303.0	LHA-1 Tarawa (TWA)   79X
14	247.8	S-3B Mauler-1 (MAU)  64Y
15	347.8	Loki (E-2D)
16	348.7	Heimdall (E-3A)
17	242.17	ESR02 - CAS Range Operator
18	34.7	ESR02 - JTAC Odin
19	270.5	Blue
20	270.75	Red

**RAMROD**

0	1	2	3	4	5	6	7	8	9
S	P	H	E	R	O	I	D	A	L

**KTC 1400 C**

	0	1	2	3	4	5	6	7	8	9
A	IGTE	UKR	QFW	LD	OS	CMJ	BA	YP	NH	XV
B	NTKI	BOS	VWD	EG	FC	XLP	RQ	HJ	AU	MY
C	AMTD	XJP	FCU	ES	QI	ONG	WH	YV	RB	KL
D	GNLR	IXA	MTS	WP	VF	UQK	OH	EC	BY	JD
E	QVCG	KLN	JTP	HE	WM	XBF	AI	DS	UR	OY
F	EGVR	QAH	KTN	BI	YL	PFD	UJ	WC	MO	SX
G	BAPI	XOM	KWS	VY	DG	JRF	UQ	NL	HT	EC
H	DSPH	FQG	JYM	CR	UK	WNX	BL	IA	OE	TV
I	QTKG	XAU	LBY	NE	JW	SFD	RM	VO	IC	PH
J	TCKN	DEB	OFS	IH	PA	JYR	XV	UQ	WL	GM
K	BDXF	EKW	QIY	UM	VJ	GOH	SA	LN	TR	PC
L	AKSV	NGT	EQM	BP	WO	HLU	IY	FJ	XD	RC
M	QNXM	IDW	THL	RP	YE	JAU	SB	CG	KV	OF
N	XWFI	JGS	TDU	LK	NV	HME	YA	QR	CO	PB
O	SPUT	LMF	BXR	YW	JN	QOI	HV	KA	CE	GD
P	WVFU	QAP	NXM	OY	SK	DJE	LT	IR	BH	CG
Q	RYNG	AIV	JOX	HU	DF	TPE	KM	QL	SB	WC
R	TBSV	KYQ	PGR	FU	AC	JHX	ON	DE	WI	LM
S	FKEQ	NUG	DWV	PL	IJ	CAH	YT	XM	SB	RO
T	XUOG	ENR	FSV	LD	MQ	WYJ	AB	KI	CP	HT
U	JVNA	EYK	XQB	HU	OG	TFC	PM	IS	WL	RD
V	PTQE	VMD	XWI	NO	KJ	HBR	YF	AL	UC	GS
W	SRIU	WYQ	VDE	LA	GC	POH	MK	XN	JF	BT
X	HSWX	TPF	IBD	MC	KJ	ORV	QG	UY	NL	AE
Y	BKTX	HWG	CIY	NV	QS	FJR	AL	UE	MO	DP

**NAVAIDS**

Id	Name	Channel	Position	Elevation
BOO	Bodo	45	N67 15.838 E014 20.046	43
BNK	Banak	47	N70 03.937 E024 58.181	17
OYA	Andoya	28	N69 17.175 E016 08.658	19

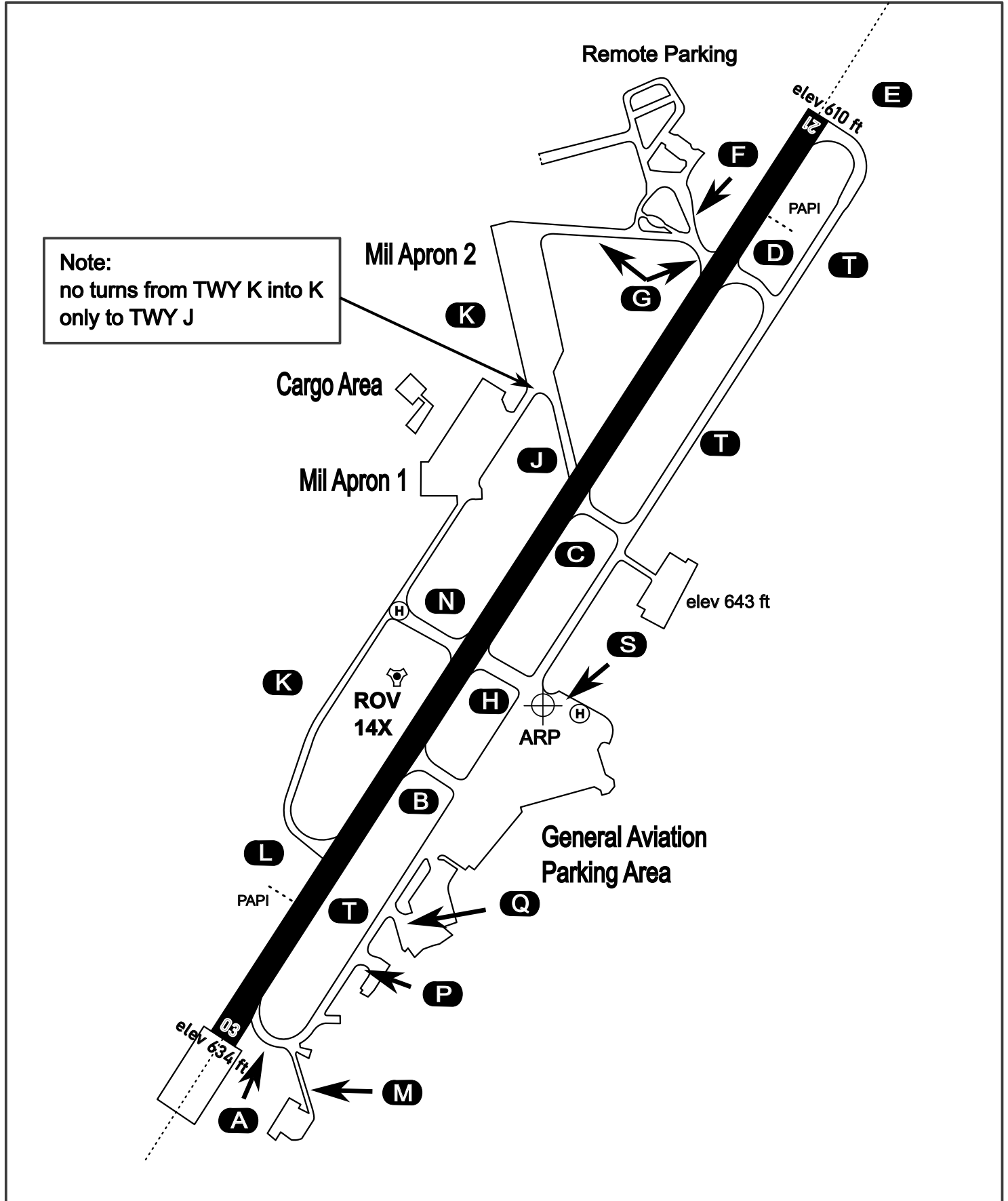
# AERODROME CHART

Rovaniemi Aerodrome

ARP N66° 33' 42" E025° 49' 51"

elev 643 ft

## ROVANIEMI, FINLAND



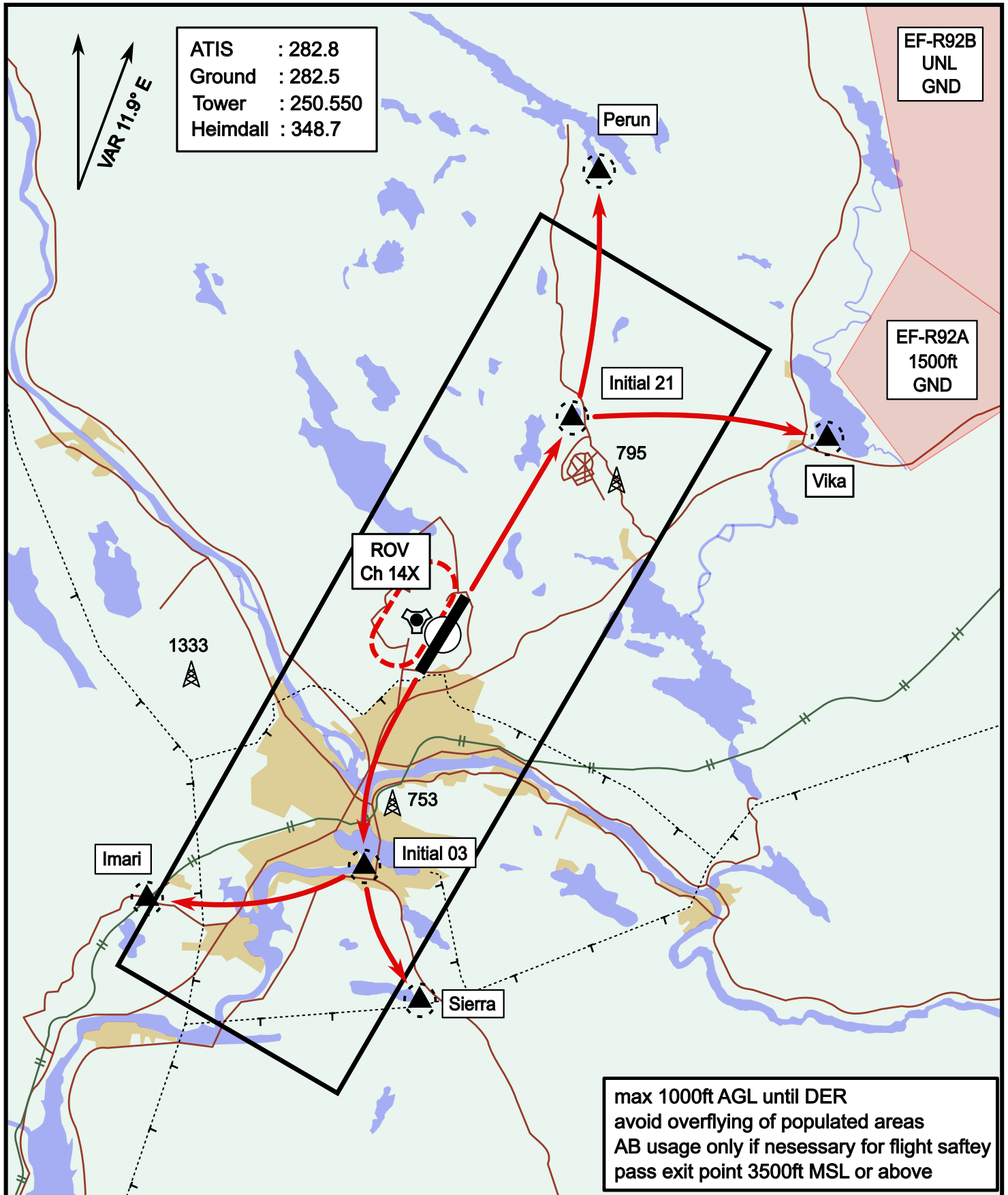
ATIS	Ground	Tower	Radar
282.800	282.500	250.550	348.700



# Visual Departure Jet

elev 643 ft

# Rovaniemi, Finland

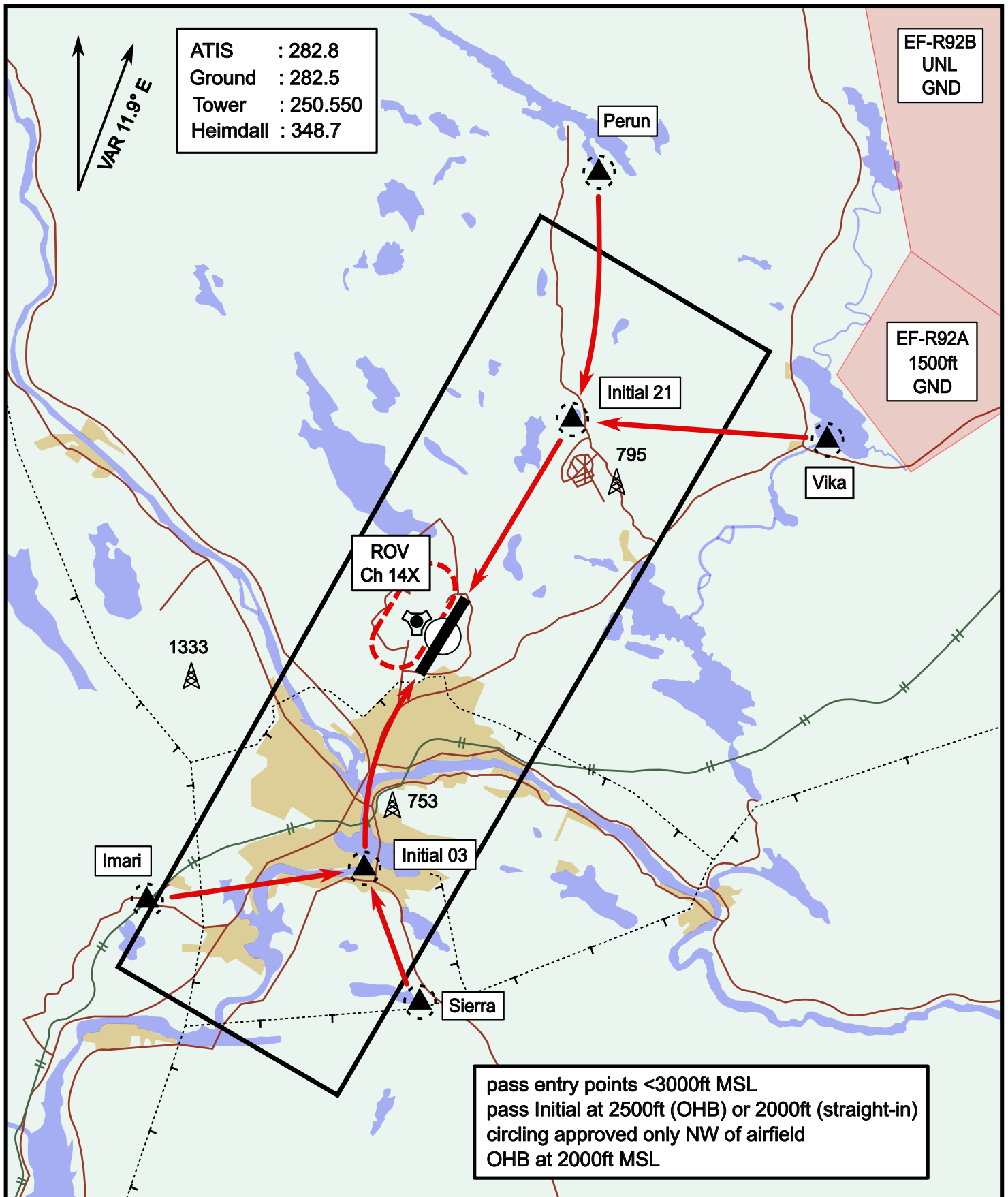


Vika	N66° 37.474 / E026° 13.557	Sierra	N66° 25.711 / E025° 46.610
Perun	N66° 44.135 / E026° 01.630	Imari	N66° 28.406 / E025° 31.291
Initial21	N66° 38.421 / E025° 58.682	Initial03	N66° 28.793 / E025° 44.105

# Visual Approach Jet

elev 643 ft

# Rovaniemi, Finland



Vika	N66° 37.474 / E026° 13.557	Sierra	N66° 25.711 / E025° 46.610
Perun	N66° 44.135 / E026° 01.630	Imari	N66° 28.406 / E025° 31.291
Initial21	N66° 38.421 / E025° 58.682	Initial03	N66° 28.793 / E025° 44.105