

**MISSION DATA CARD**

OPORD		Callsign		Mission		Date/Time	
3678/2025		Monster 1		Training		202000FEB25	
Task	CBU TRAINING					Freq	
AO	ESR03					132.15	
Departure				Recovery			
VFR Depature				VFR Approach			
#	Callsign	Pilot	IFF	TCN	LSR	NET	
-1	Monster 1-1	addiks	1411	1Y	1611	21/01	
-2	Monster 1-2	Lenzi	1412	64Y	1612	21/02	
-3	Monster 1-3	Toolface	1413	64X	1613	21/03	

**LOADOUT**

A/A	A9M	GUN	100% CM
A/G	7M282L, 2xC87, 2xC105	CHF	0
POD	A184, TGP	FLR	480
TKS		FUEL	90%

**TOLD**

	Takeoff	Target	Joker	Bingo	Land
FUEL	9978				

**AIRBASES**

	Name	TCN	ATIS	GND	TWR	RWY	Elev	ILS
Dep	Rovaniemi	14X	282.8	282.5	250.55	21	643	111.7
Arr	Rovaniemi	14X	282.8	282.5	250.55	21	643	111.7

**FLIGHTPLAN**

#	Name	Navaid/Coords/DME	ALT	TOT
1	IMARI	N66 28.406 E025 31.291		
2	PERUN	N66 44.135 E026 01.630		
3	HOLDING	N66 27.265 E023	12000	
4	STATIC1	N66 38.568 E023 07.986		
5	STATIC2	N66 38.538 E023 08.700		
6	STATIC3	N66 35.028 E023 00.852		
7	MOVING4	N66 19.596 E022 50.268		
8	MOVING5	N66 18.534 E023 11.346		
9	MOVING6	N66 14.118 E022 57.210		
10	OUTPOST7	N66 04.308 E023 15.042		
11	MOVING8	N65 59.778 E023 16.320		
12	MOVING9	N65 52.404 E023 04.080		
13	IMARI	N66 28.406 E025 31.291		
14	SIERRA	N66 25.711 E025 46.610		
15	RVNInit03	N66 28.793 E025 44.105		
16	PERUN	N66 44.135 E026 01.630		
17	VIKA	N66 37.474 E026 13.557		
18	RVNInit21	N66 38.642 E025 58.682		

**COMMS**

Radio	Usage
1	132.15
2	2-4-16-2-4

## NOTES

Departure via IMARI (RW21) oder PERUN (RW03).  
HOLDING im Norden von ESR03.

STATIC-Targets: Attack SOUTH to NORTH

MOVING/OUTPOST: Attack NORTH TO SOUTH

Unterschiedliche HOF (Height of Function) ausprobieren.

Off-Turns nach Westen (Ausnahme MOVING5: Osten)! Danach zurück in Holding.

Targets:

- \* STATIC1 - 4x MLRS BM-21 Grad
- \* STATIC2 - 4x MLRS 9A52 Smerch
- \* STATIC3 - 8x SSM 9P117 Scud B
- \* MOVING4 - 1x Jeep, 12xTruck, 3xSA9
- \* MOVING5 - 8xMBT T90, 2xSA19
- \* MOVING6 - 8xIFV BMP-3
- \* OUTPOST7 - 2xSA19, 2xSA18, 4xZu-23
- \* MOVING8 - 8xAPC BTR-82A, 2xZSU-23-4 Shilka
- \* MOVING9 - 3xSpeedboat

**OTHER FLIGHTS**

Callsign	Mission	Airframe	Freq	TCN	Grpld	Laser
Tiger 1	Training	3x F/A-18C	261.15	1/64	1	155X
AO	ESR01	Task	SEAD / DEAD			
Panther 2	Training	3x F/A-18C	261.25	1/64	20	156X
AO	ESR01	Task	SEAD / DEAD			
Nazgul 6	Training	4x F-15E	262.45	1/64		156X
AO	ESR02	Task	ACM Training			

## RADIO CHANNELS

#	Freq	Name
1		Flight/Squadron specific
2	282.8	Rovaniemi ATIS
3	282.5	Rovaniemi Ground
4	250.55	Rovaniemi Tower
5	320.7	Bodo ATIS
6	250.75	Bodo Tower
7	235.45	Kallax ATIS
8	250.3	Kallax Tower
9	265.0	Texaco-1   KC-135   Medium / Slow   71Y
10	319.8	Arco-1   KC-135   High / Fast   22Y
11	360.8	Shell-1   KC-135 MPRS   High / Fast   41Y
12	304.0	CVN-71 Rough Rider (RRR)   71X
13	303.0	LHA-1 Tarawa (TWA)   79X
14	247.8	S-3B Mauler-1 (MAU)  64Y
15	347.8	Loki (E-2D)
16	348.7	Heimdall (E-3A)
17	242.17	ESR02 - CAS Range Operator
18	34.7	ESR02 - JTAC Odin
19	270.5	Blue
20	270.75	Red

**RAMROD**

0	1	2	3	4	5	6	7	8	9
S	P	H	E	R	O	I	D	A	L

**KTC 1400 C**

	0	1	2	3	4	5	6	7	8	9
A	IGTE	UKR	QFW	LD	OS	CMJ	BA	YP	NH	XV
B	NTKI	BOS	VWD	EG	FC	XLP	RQ	HJ	AU	MY
C	AMTD	XJP	FCU	ES	QI	ONG	WH	YV	RB	KL
D	GNLR	IXA	MTS	WP	VF	UQK	OH	EC	BY	JD
E	QVCG	KLN	JTP	HE	WM	XBF	AI	DS	UR	OY
F	EGVR	QAH	KTN	BI	YL	PFD	UJ	WC	MO	SX
G	BAPI	XOM	KWS	VY	DG	JRF	UQ	NL	HT	EC
H	DSPH	FQG	JYM	CR	UK	WNX	BL	IA	OE	TV
I	QTKG	XAU	LBY	NE	JW	SFD	RM	VO	IC	PH
J	TCKN	DEB	OFS	IH	PA	JYR	XV	UQ	WL	GM
K	BDXF	EKW	QIY	UM	VJ	GOH	SA	LN	TR	PC
L	AKSV	NGT	EQM	BP	WO	HLU	IY	FJ	XD	RC
M	QNXM	IDW	THL	RP	YE	JAU	SB	CG	KV	OF
N	XWFI	JGS	TDU	LK	NV	HME	YA	QR	CO	PB
O	SPUT	LMF	BXR	YW	JN	QOI	HV	KA	CE	GD
P	WVFU	QAP	NXM	OY	SK	DJE	LT	IR	BH	CG
Q	RYNG	AIV	JOX	HU	DF	TPE	KM	QL	SB	WC
R	TBSV	KYQ	PGR	FU	AC	JHX	ON	DE	WI	LM
S	FKEQ	NUG	DWV	PL	IJ	CAH	YT	XM	SB	RO
T	XUOG	ENR	FSV	LD	MQ	WYJ	AB	KI	CP	HT
U	JVNA	EYK	XQB	HU	OG	TFC	PM	IS	WL	RD
V	PTQE	VMD	XWI	NO	KJ	HBR	YF	AL	UC	GS
W	SRIU	WYQ	VDE	LA	GC	POH	MK	XN	JF	BT
X	HSWX	TPF	IBD	MC	KJ	ORV	QG	UY	NL	AE
Y	BKTX	HWG	CIY	NV	QS	FJR	AL	UE	MO	DP

**NAVAIDS**

Id	Name	Channel	Position	Elevation
BOO	Bodo	45	N67 15.838 E014 20.046	43
BNK	Banak	47	N70 03.937 E024 58.181	17
OYA	Andoya	28	N69 17.175 E016 08.658	19

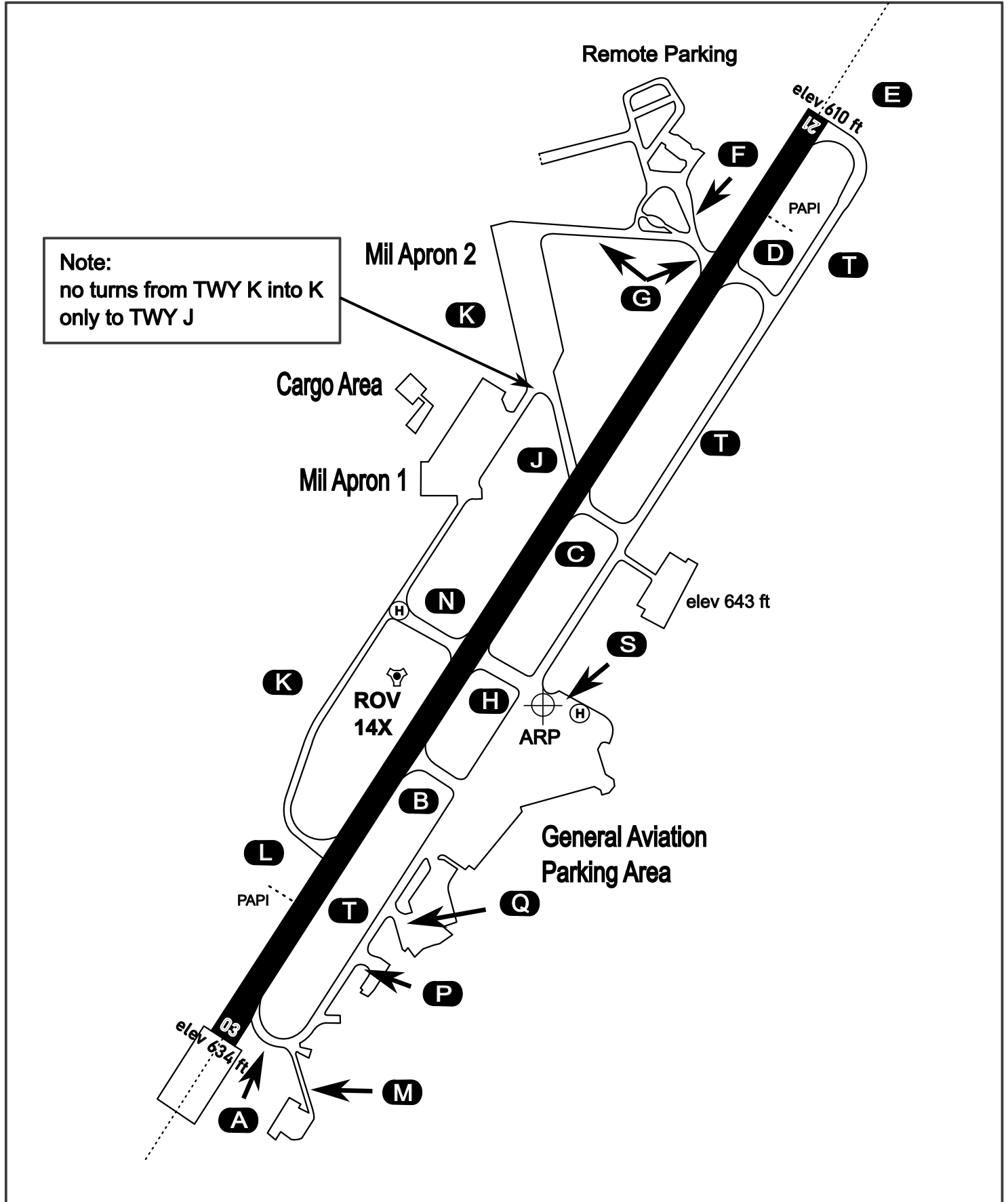
# AERODROME CHART

Rovaniemi Aerodrome

ARP N66° 33' 42" E025° 49' 51"

elev 643 ft

## ROVANIEMI, FINLAND



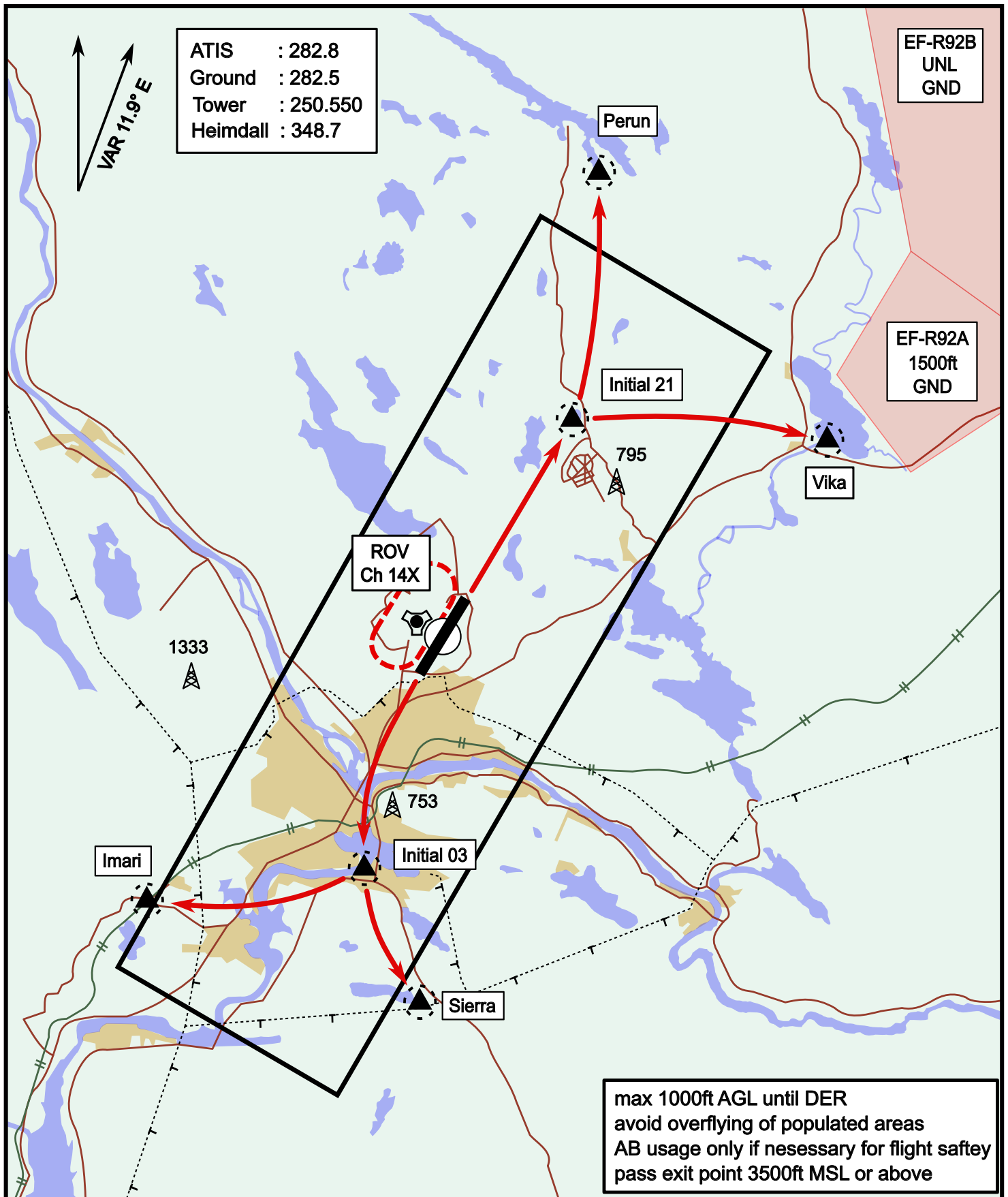
ATIS	Ground	Tower	Radar
282.800	282.500	250.550	348.700



# Visual Departure Jet

elev 643 ft

# Rovaniemi, Finland

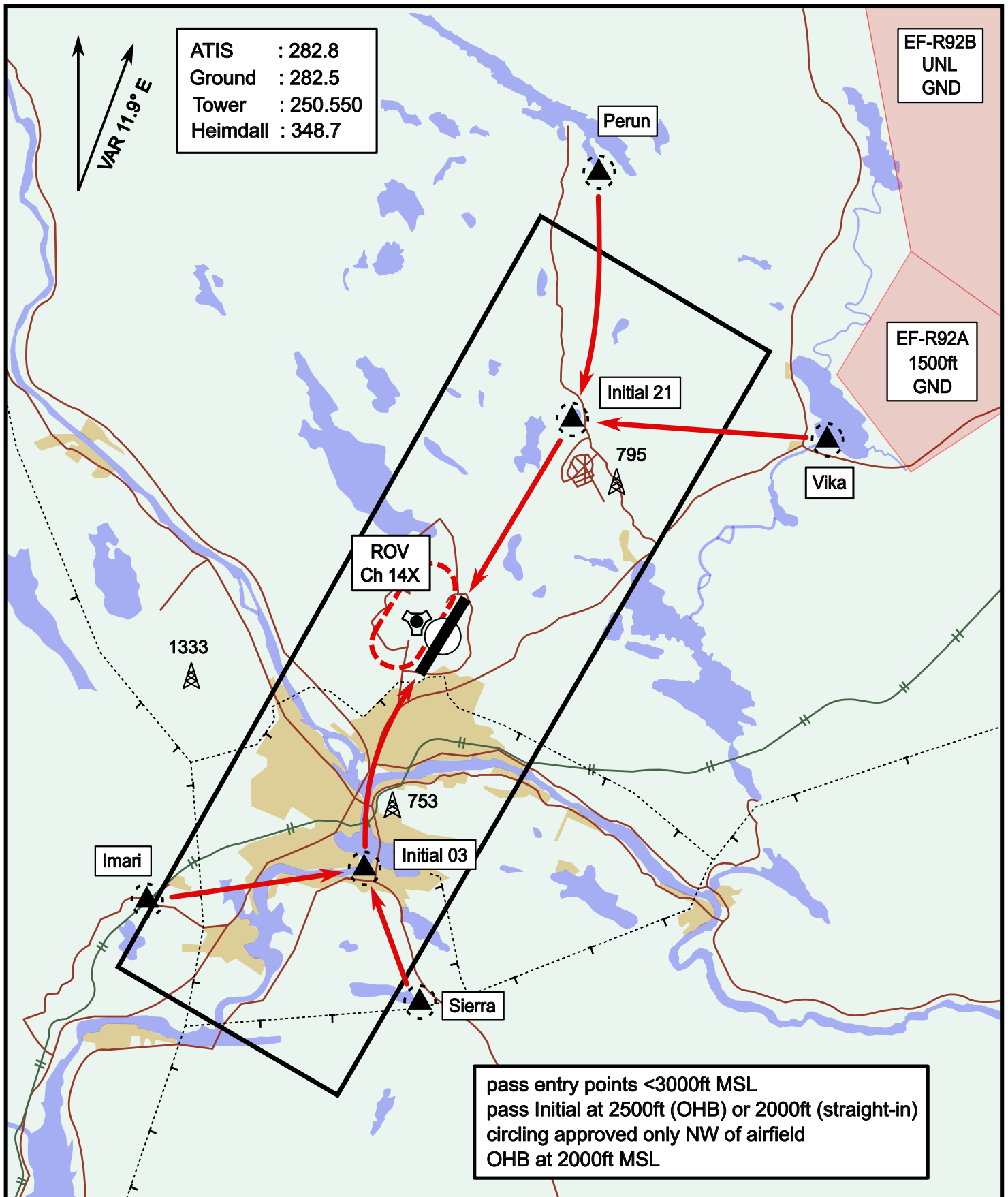


Vika	N66° 37.474 / E026° 13.557	Sierra	N66° 25.711 / E025° 46.610
Perun	N66° 44.135 / E026° 01.630	Imari	N66° 28.406 / E025° 31.291
Initial21	N66° 38.421 / E025° 58.682	Initial03	N66° 28.793 / E025° 44.105

# Visual Approach Jet

elev 643 ft

# Rovaniemi, Finland



Vika	N66° 37.474 / E026° 13.557	Sierra	N66° 25.711 / E025° 46.610
Perun	N66° 44.135 / E026° 01.630	Imari	N66° 28.406 / E025° 31.291
Initial21	N66° 38.421 / E025° 58.682	Initial03	N66° 28.793 / E025° 44.105