

MISSION DATA CARD

OPORD		Callsign		Mission		Date/Time		
3675/2025		Raptor 1		Training		181244FEB25		
Task						Freq		
AO						134.0		
Departure				Recovery				
SID RWY 03				ILS RWY 21				
#	Callsign		Pilot		IFF	TCN	LSR	NET
-1	Raptor 1-1		Beethovenz		1611	1Y	1621	

LOADOUT

A/A						GUN	
A/G						CHF	
POD						FLR	
TKS						FUEL	

TOLD

	Takeoff	Target	Joker	Bingo	Land
FUEL	7163			2500	

AIRBASES

	Name	TCN	ATIS	GND	TWR	RWY	Elev	ILS
Dep	Rovaniemi	14X	282.8	282.5	250.55	21	643	111.7
Arr	Rovaniemi	14X	282.8	282.5	250.55	21	643	111.7

FLIGHTPLAN

#	Name	Navaid/Coords/DME	ALT	TOT
1	RVNInit03	N66 28.793 E025 44.105	2500	
2	IMARI	N66 28.406 E025 31.291	3500	
3	SIERRA	N66 25.711 E025 46.610	3500	
4	RVNInit21	N66 38.642 E025 58.682	2500	
5	VIKA	N66 37.474 E026 13.557	3500	
6	PERUN	N66 44.135 E026 01.630	3500	
7	ROTKO	N66 57.633 E025 57.667	18000	
8	R93B-Gunpit-South	N67 21.356 E026 31.255	685	
9	IBSAN	N66 42.500 E025 01.083	18000	
10	NAFFI	N67 04.630 E023 11.660	18000	
11	Moving Targets	N66 18.030 E022 59.593	400	

SUPPORT**Tanker**

Callsign	TCN	Freq	ALT	TAS
TEXACO 1	71Y	265.0		
	Pos			
ARCO 1	22Y	319.8		
	Pos			

RADIO CHANNELS

#	Freq	Name
1		Flight/Squadron specific
2	282.8	Rovaniemi ATIS
3	282.5	Rovaniemi Ground
4	250.55	Rovaniemi Tower
5	320.7	Bodo ATIS
6	250.75	Bodo Tower
7	235.45	Kallax ATIS
8	250.3	Kallax Tower
9	265.0	Texaco-1 KC-135 Medium / Slow 71Y
10	319.8	Arco-1 KC-135 High / Fast 22Y
11	360.8	Shell-1 KC-135 MPRS High / Fast 41Y
12	304.0	CVN-71 Rough Rider (RRR) 71X
13	303.0	LHA-1 Tarawa (TWA) 79X
14	247.8	S-3B Mauler-1 (MAU) 64Y
15	347.8	Loki (E-2D)
16	348.7	Heimdall (E-3A)
17	242.17	ESR02 - CAS Range Operator
18	34.7	ESR02 - JTAC Odin
19	270.5	Blue
20	270.75	Red

RAMROD										
0	1	2	3	4	5	6	7	8	9	
H	A	R	V	E	S	T	I	N	G	
KTC 1400 C										
	0	1	2	3	4	5	6	7	8	9
A	JGVM	RKA	LOH	ES	QT	UFW	YP	XN	ID	BC
B	KXYO	JCW	APS	EB	VD	TIR	GF	NL	UM	HQ
C	SCKR	YFO	LEI	BD	MT	PHQ	UJ	AG	VX	WN
D	FGEW	CUA	KOS	YT	BI	MNR	JH	DX	LP	QV
E	HVNE	DST	KFX	UB	CR	IOJ	MY	LA	WG	QP
F	BTSU	OVX	KAG	CQ	RP	HED	JY	ML	FN	IW
G	RTNB	GMQ	UEL	HX	AK	SFO	CW	VJ	IP	YD
H	UQRS	XNM	BJH	YW	GP	TEO	IK	FC	LV	DA
I	YBOG	PSL	MDI	VH	AK	JWF	QX	RU	TN	EC
J	QIDK	ROA	CTU	JY	HW	EMX	SF	VG	BP	LN
K	WBDY	CRT	NOL	JI	EV	FGU	XH	PK	SA	MQ
L	PGBF	TMQ	IDK	EC	SR	JNO	LA	VW	HX	YU
M	TRWV	AFE	YQD	BX	JH	KLG	OP	UN	MI	SC
N	PENB	LIF	WHR	OJ	YT	KDM	GU	SQ	VC	AX
O	FYTM	XDW	CIH	AL	KQ	JUO	GB	RS	EP	NV
P	HONE	FCX	WKM	LD	TP	QBV	YG	SA	JR	IU
Q	WVCX	RSA	PGE	KQ	IN	ODU	BH	JF	MY	LT
R	OLFX	GRI	BAQ	DU	PM	NTH	CJ	SE	WK	VY
S	CAMN	URF	HGY	VI	SW	XJO	TL	BQ	EP	DK
T	AUBP	FXV	OIT	YN	HE	MDG	WK	LC	SJ	QR
U	MWRJ	CDO	EPU	IG	LB	HYT	AK	QX	NS	VF
V	XIHB	SOP	JGD	FA	MU	WCT	NR	QY	KE	VL
W	XKFN	EVQ	JRU	TG	HB	DWM	SP	IO	CA	YL
X	JOXH	IRM	KWB	QP	UF	YSG	LC	NE	AT	VD
Y	BVSU	AKO	PQC	WL	JN	RDT	EM	YH	IG	FX

NAVAIDS

Id	Name	Channel	Position	Elevation
BOO	Bodo	45	N67 15.838 E014 20.046	43
BNK	Banak	47	N70 03.937 E024 58.181	17
OYA	Andoya	28	N69 17.175 E016 08.658	19

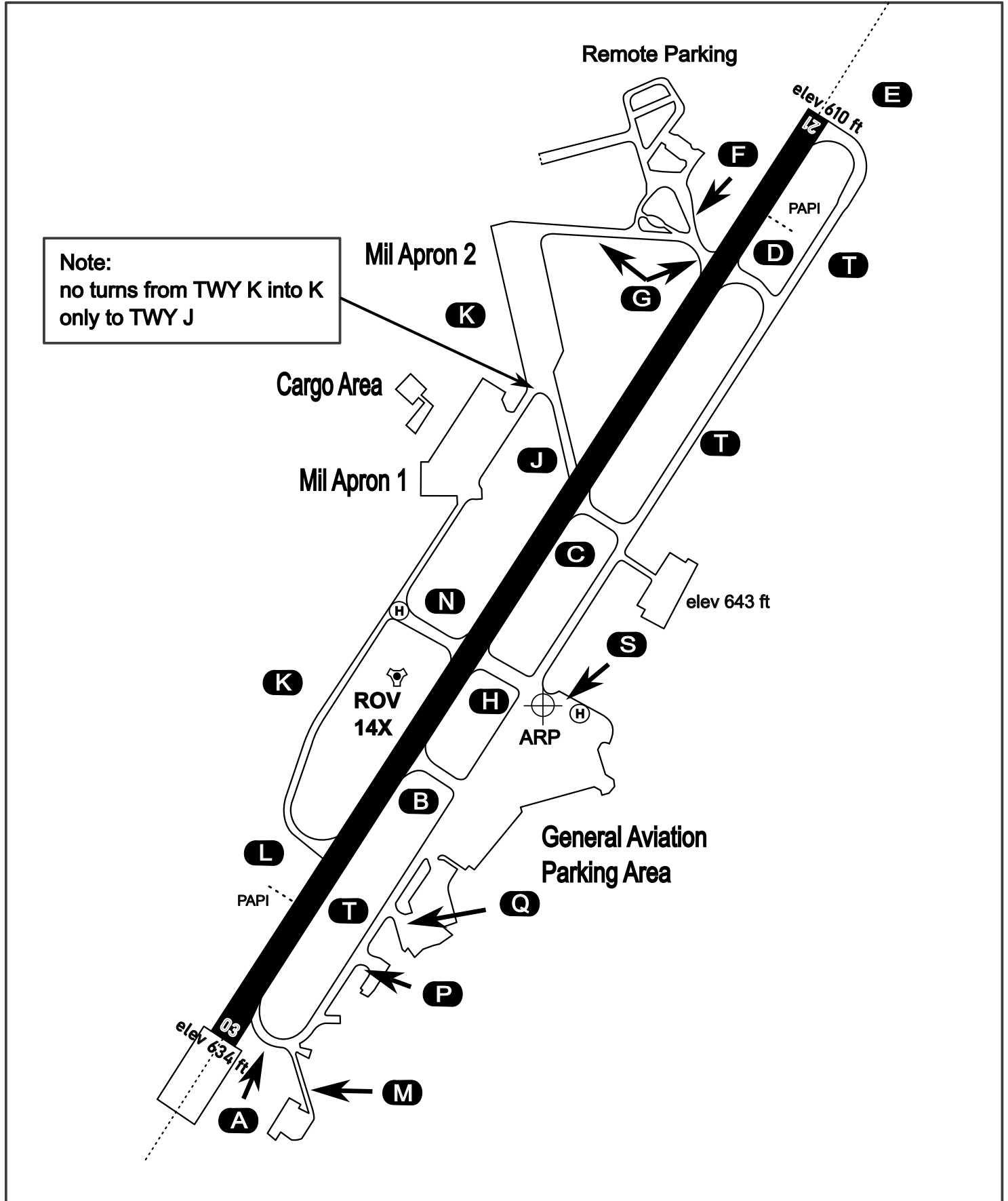
AERODROME CHART

Rovaniemi Aerodrome

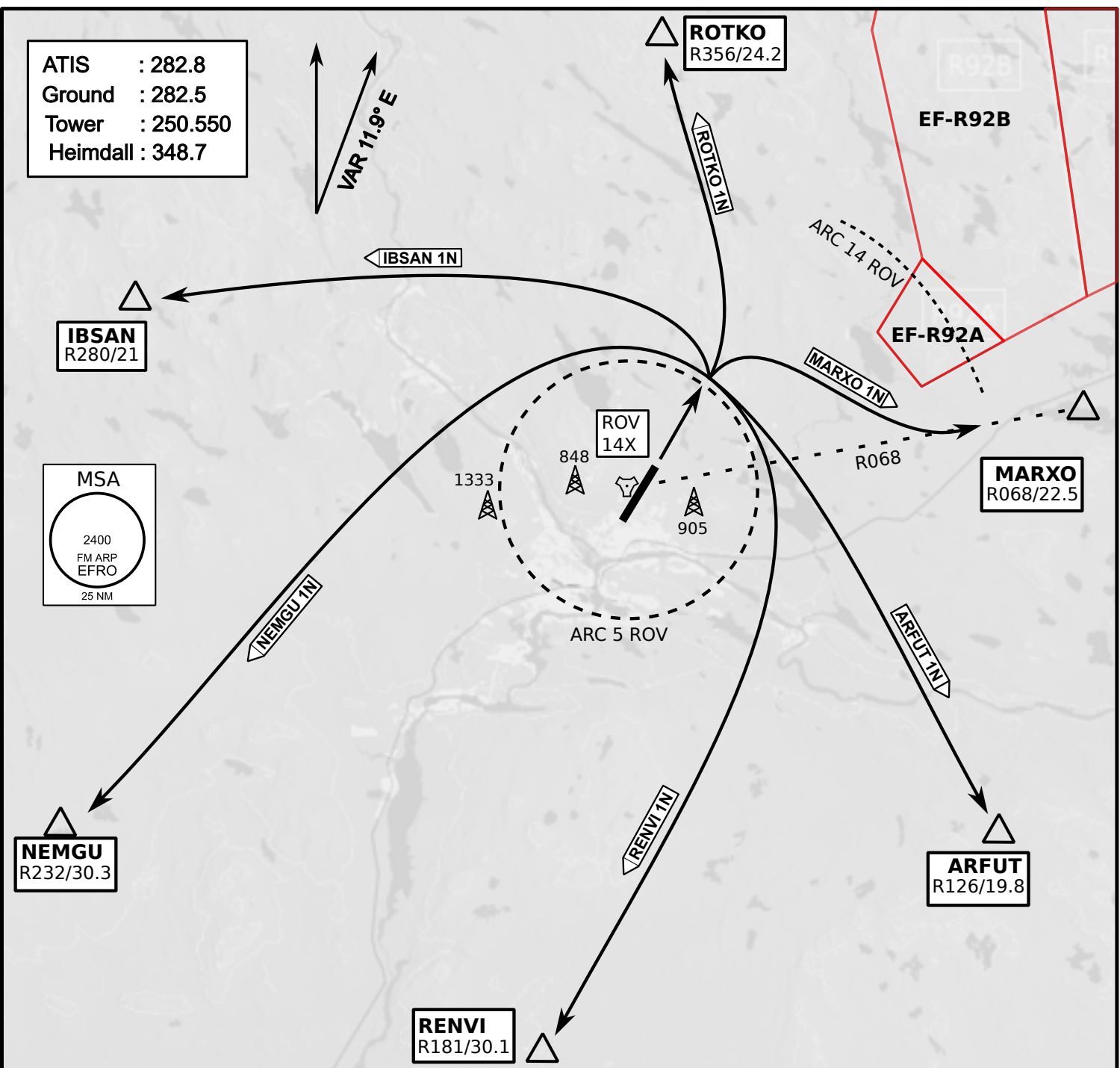
ARP N66° 33' 42" E025° 49' 51"

elev 643 ft

ROVANIEMI, FINLAND



ATIS	Ground	Tower	Radar
282.800	282.500	250.550	348.700



ATIS : 282.8
Ground : 282.5
Tower : 250.550
Heimdall : 348.7

VAR 11.9° E

MSA
2400
FM ARP
EFRO
25 NM

NEMGU
R232/30.3

REIVI
R181/30.1

REIVI 1N

NEMGU 1N

REIVI 1N

ARFUT 1N

ARFUT
R126/19.8

MARXO 1N

MARXO
R068/22.5

ARC 14 ROV

ARC 5 ROV

R068

IBSAN 1N

IBSAN
R280/21

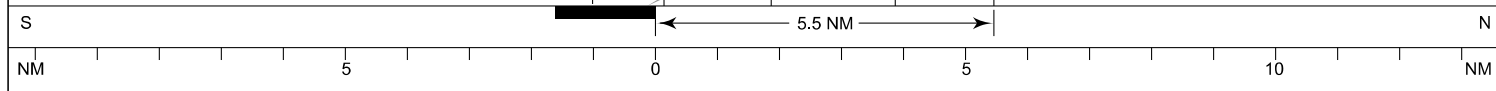
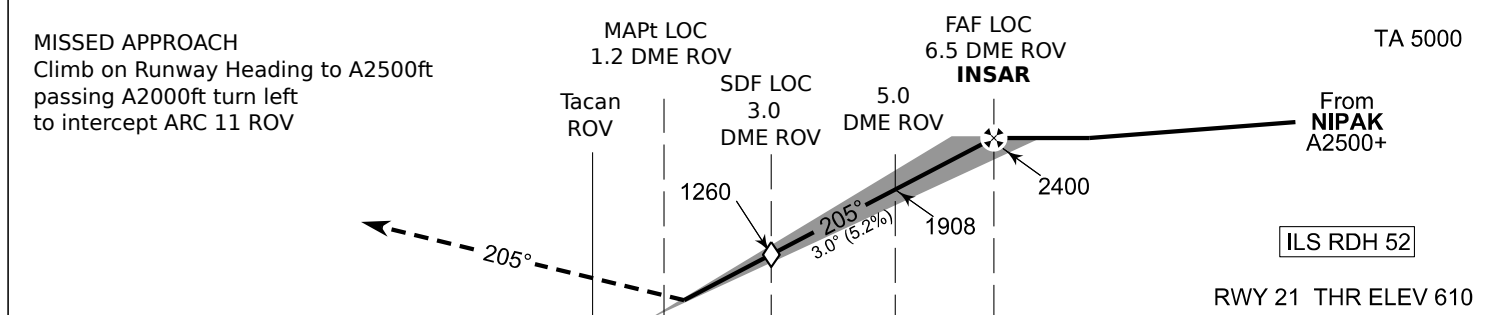
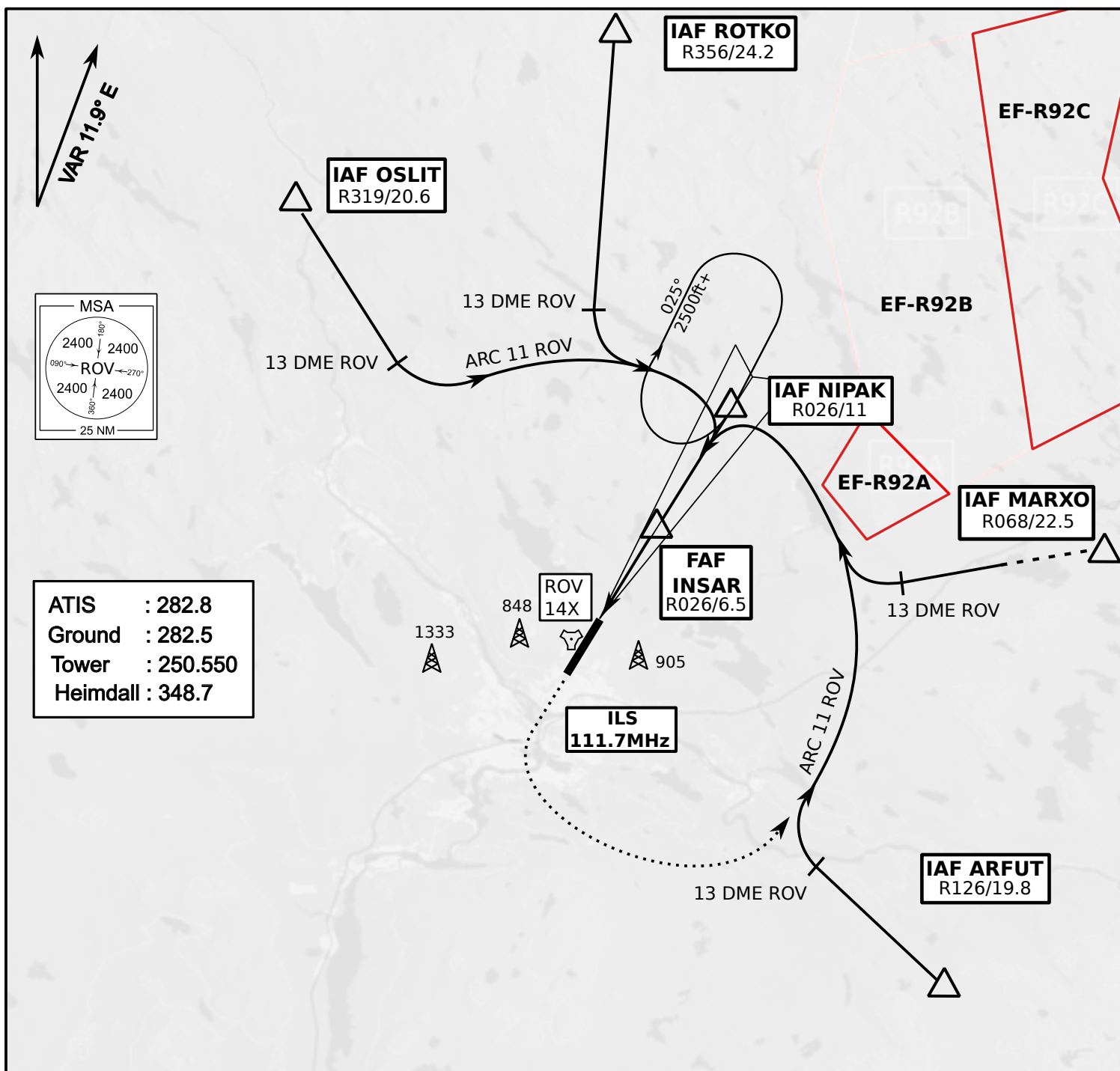
ROTKO
R356/24.2

ROTKO 1N

EF-R92B

EF-R92A

- Climb on Rwy heading to min A2000ft
- when passing A2000ft OR 5 DME ROV (whichever is later) turn to exit point
- Stay outside ARC 5 ROV
- if EF-R92B is active :
intercept R068 ROV inside 14 DME ROV to MARXO
- AB usage only if necessary for flight safety



OCA (H)	A	B	C	D
ILS CAT I	773 (164)	784 (175)	795 (186)	809 (200)
LOC	930 (320)			
LOC WO SDF	1260 (650)			
Circling	1120 (470)	1150 (510)	1300 (660)	1340 (690)

	kt	90	100	120	140	160
FAF - MAPt 5.4 NM	min:sec	3:36	3:14	2:42	2:19	2:01
Rate of descent	ft/min	480	530	640	740	850

Timing not authorized for defining the MAPt